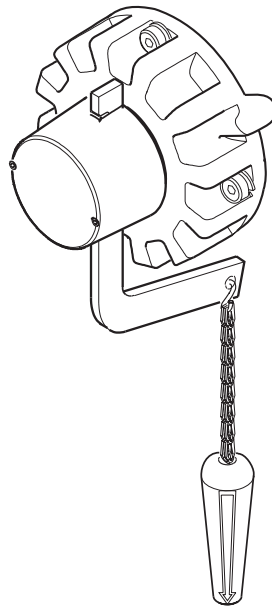
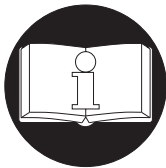


INSTALLATION INSTRUCTIONS for BRAKE RELEASE KIT PART NUMBER MLK-K390



(Dwg. MHP1673)



READ THIS MANUAL BEFORE USING THESE PRODUCTS. This manual contains important safety, installation and maintenance information. Make this manual available to all persons responsible for the operation, installation and maintenance of these products.

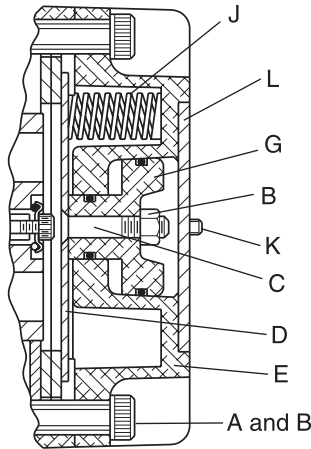
! WARNING

- **Disconnect the air supply to the hoist before installing the Brake Release Kit.**
- **Do not suspend a load from the hoist when installing the Brake Release Kit.**

These instructions must be used with the appropriate hoist manual. For MLK hoists refer to Manual Form Number P6554. For HLK hoists refer to Manual Form Number P6587.

Refer all communications to the nearest Ingersoll-Rand Material Handling Office or Distributor.

DISASSEMBLY INSTRUCTIONS



(Dwg. MHP0475)

Items referenced in the following section are shown on Dwg. MHP0475.

1. Unscrew the four Shoulder Bolts (A) and remove the Lockwashers (B), Spring and Piston Housing (E) from the Hoist.
2. Unscrew the two Load Rating Plate Screws (K) and discard them.

3. Lift the Load Rating Plate (L) from the Spring and Piston Housing.
4. Clamp the Pressure Plate (D) and assembled Spring and Piston Housing vertically in a vise.
5. Remove the Piston Nut (B) and discard it.

NOTICE

• **Two types of Pressure Plates are used on these Hoists. One style has a threaded stud as an integral part of the Pressure Plate and the other style has a detached Pressure Plate Screw (C) that fits through the hole in the center of the Pressure Plate.**

6. If your Pressure Plate has the detached Pressure Plate Screw, remove the Screw and discard it.
7. If you are installing the heavy duty Brake Springs (11), refer to Note ** on page 3 and continue as follows:
 - a. Carefully loosen the vise and remove the Pressure Plate and Spring and Piston Housing.
 - b. Set the Housing on a workbench with the Pressure Plate upward.
 - c. Lift the Pressure Plate off the Housing and remove the Brake Springs.

ASSEMBLY INSTRUCTIONS

Items referenced in the following section are shown on Dwg. TPC476.

1. If the heavy duty Brake Springs (11) are being installed, proceed as follows:
 - a. Place the Spring and Piston Housing (G) on a workbench with the three spring cavities upward.
 - b. Place a Brake Spring in each cavity.
 - c. **For Pressure Plates without the integral stud**, install the new Pressure Plate Screw (10) so that the screw head enters the counterbore in the Pressure Plate (H). Place the Pressure Plate and Screw over the Brake Springs so that the Screw enters the hole in the Brake Piston (E). **For Pressure Plates with the integral stud**, place the Pressure Plate (H), stud side first, over the Brake Springs so that the stud enters the hole in the Brake Piston (E).
 - d. Using a vise, carefully compress the Pressure Plate against the Brake Spring and Piston Housing until the Screw or stud protrudes through the Piston.
2. Install the Yoke Pin (2) in the crosshole of Release Yoke (1).
3. Start the thread of the Yoke Release onto the new Pressure Plate Screw (10) or the stud of the Pressure Plate (D). Do not reuse the old Pressure Plate Screw.
4. Remove the assembly from the vise.
5. For Pressure Plates without the integral stud, tighten the Pressure Plate Screw and Release Yoke until a 0.006 to 0.012 in. (0.15 to 0.30 mm) gap exists between the Pressure Plate and Brake Piston (G.)

NOTICE

• **Make certain the slot in the end of the Release Yoke will be vertical when the Housing is bolted to the Hoist.**

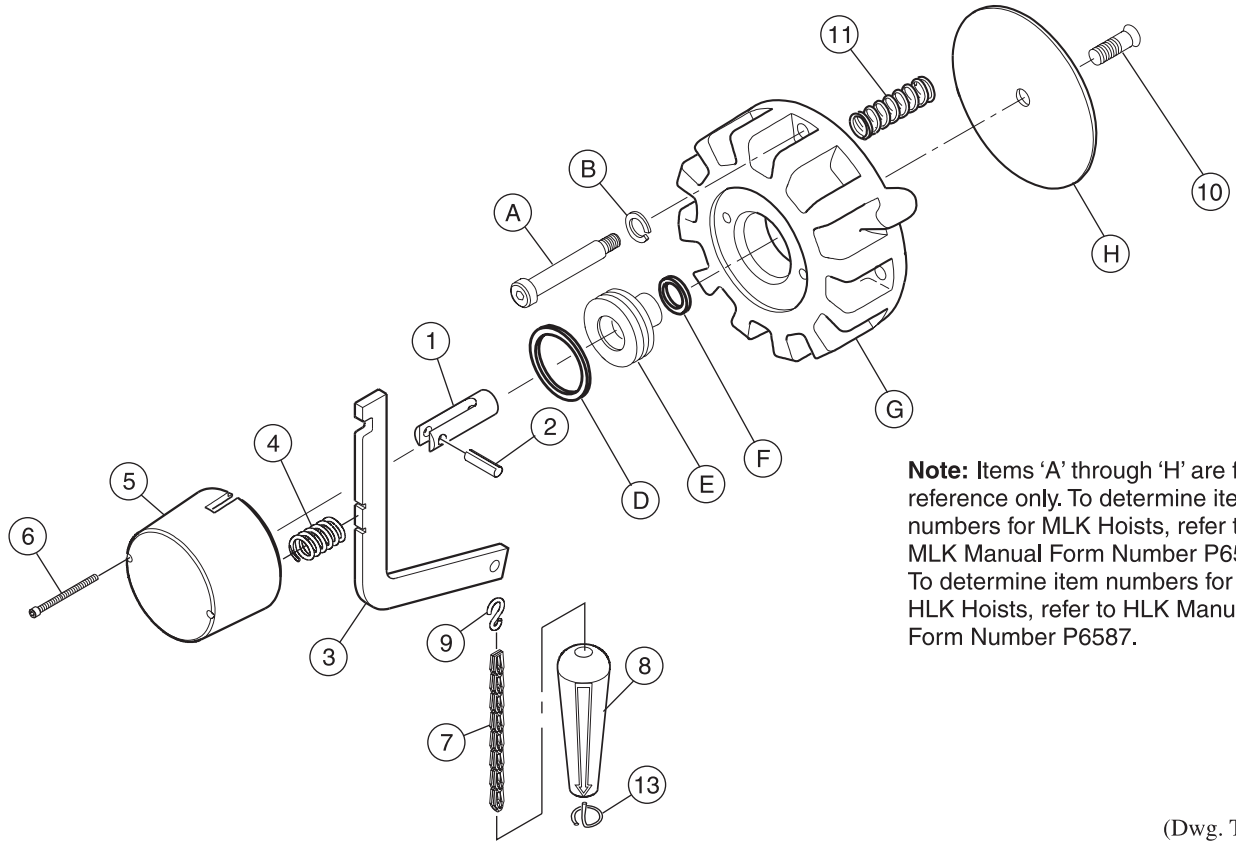
6. **For Pressure Plates with the integral stud**, tighten the Release Yoke to 50 to 70 in-lb (5.65 to 7.91 Nm) torque.

NOTICE

• **Make certain the Brake Piston extends completely through the Spring and Piston Housing and contacts the Pressure Plate. Also, make certain the slot in the end of the Release Yoke will be vertical when the Housing is bolted to the Hoist.**

7. Install the assembled Brake Spring and Piston Housing on the Hoist and secure it with the four Shoulder Bolts (A) and Lockwashers (B).
8. Insert the Release Lever (3) through the slot in the Release Yoke with the notched end of the Lever toward the top of the Hoist and the notch facing away from the Brake Spring and Piston Housing.
9. Place the Release Lever Spring (4) on the hub inside the Housing Cover (5).
10. Position the Housing Cover and Release Lever Spring against the Brake Spring and Piston Housing. Make certain the shallow slot at the top of the Housing Cover engages the notch in the Release Lever and the Release Lever Spring encircles the hub on the Release Lever.
11. Position the Load Rating Plate against the end of the Housing Cover.
12. Secure the Plate and Housing Cover to the Brake Spring and Piston Housing with the two Cover Screws (6).
13. Cut the Pull Chain (7) to the desired length.
14. Insert one end of the Chain through the Pull Chain Handle (8) and attach Anchor (13) to the end link of Chain at the arrowhead end of the Handle.
15. Attach the other end of the Pull Chain to the Release Lever with S-Hook (9).

BRAKE RELEASE KIT DRAWING AND PARTS LIST



Note: Items 'A' through 'H' are for reference only. To determine item numbers for MLK Hoists, refer to MLK Manual Form Number P6554. To determine item numbers for HLK Hoists, refer to HLK Manual Form Number P6587.

(Dwg. TPC476)

ITEM NO.	DESCRIPTION OF PART	QTY. TOTAL	PART NO.
	Brake Release Kit (includes items 1 thru 12)	1	MLK-K390
1	Release Yoke	1	MLK-381
2	Yoke Pin	1	JC3350-74
3	Release Lever	1	MLK-380
4	Release Lever Spring	1	MLK-942
5	Housing Cover	1	MLK-391
6	Cover Screw	2	CE110-302
7	Pull Chain	Specify Length	37657-XXX-*
8	Pull Chain Handle	1	33268
9	S-Hook	1	37659
10	Pressure Plate Screw	1	MLK-392
** 11	Brake Spring	3	ML50K-832H
12	Lockwasher (not shown)	2	R2-320
13	Anchor	1	37723

* Specify length in feet and inches. Example: 37657-005-A = 5 foot, 1 inch length). For specific inch designation use the chart below.
 A = 1 inch; B = 2 inches; C = 3 inches; D = 4 inches; E = 5 inches; F = 6 inches; G = 7 inches; H = 8 inches; J = 9 inches; K = 10 inches; L = 11 inches

** Brake Springs are to be used only if brake capacities must be increased to 150% dynamic and 200% static as required by Military Specifications. These heavy duty Springs may cause reduced Brake Disc life and may affect Hoist operation at light loads and low pressure. If increased capacities are not required, do not use heavy duty Brake Springs.

United States Office Locations

For Order Entry, Order Status and Technical Support

**Ingersoll-Rand
Material Handling**
Southern Pines Plant
1725 U.S. Hwy No. 1, N.
P.O. Box 8000
Southern Pines, NC
Phone: (910) 692-8700
Fax: (910) 692-7822

**Ingersoll-Rand
Distribution Center**
P.O. Box 618
510 Hester Drive
White House, TN 37188
Phone: (615) 672-0321
Fax: (615) 672-0801

Web Site at:
www.ingersoll-rand.com

Regional Sales Offices

Chicago, IL
888 Industrial Drive
Elmhurst, IL 60126
Phone: (630) 530-3800
Fax: (630) 530-3891

Detroit, MI
23192 Commerce Drive
Farmington Hills, MI 48335
Phone: (248) 476-6677
Fax: (248) 476-6670

Houston, TX
450 Gears Road
Suite 210
Houston, TX 77067-4516
Phone: (281) 872-6800
Fax: (281) 872-6807

Los Angeles, CA
11909 E. Telegraph Road
Santa Fe Springs,
CA 90670-0525
Phone: (562) 948-4189
Fax: (562) 948-1828

Philadelphia, PA
P.O. Box 425
900 E. 8th Ave., Suite 103
King of Prussia, PA 19406
Phone: (610) 337-5930
Fax: (610) 337-5912

International Office Locations

Offices and distributors in principal cities throughout the world. Contact the nearest **Ingersoll-Rand** office for the name and address of the distributor in your country or write/fax to:

**Ingersoll-Rand
Material Handling**
Southern Pines Plant
1725 U.S. Hwy No. 1, N.
P.O. Box 8000
Southern Pines, NC
Phone: (910) 692-8700
Fax: (910) 692-7822

**Canada
National Sales Office
Regional Warehouse
Toronto, Ontario**
51 Worcester Road
Rexdale, Ontario
M9W 4K2
Phone: (416) 213-4500
Fax: (416) 213-4510
Order Desk
Fax: (416) 213-4506

**Regional Sales Offices
Edmonton, Alberta**
1430 Weber Center
5555 Calgary Trail N.W.
Edmonton, Alberta
T6H 5G8
Phone: (403) 438-5039
Fax: (403) 437-3145

Montreal, Quebec
3501 St. Charles Blvd.
Kirkland, Quebec
H9H 4S3
Phone: (514) 695-9040
Fax: (514) 695-0963

British Columbia
1200 Cliveden Avenue
Delta, B. C.
V3M 6G4
Phone: (604) 523-0803
Fax: (604) 523-0801

**Latin America Operations
Ingersoll-Rand
Production Equipment Group**
730 N.W. 107 Avenue
Suite 300, Miami, FL
33172-3107
Phone: (305) 559-0500
Fax: (305) 222-0864

**Europe, Middle East and
Africa
Ingersoll-Rand
Material Handling
Douai Operations**
111, avenue Roger Salengro
59450 Sin Le Noble, France
Phone: (33) 3-27-93-08-08
Fax: (33) 3-27-93-08-00

**Asia Pacific Operations
Ingersoll-Rand**
Suite 1201-3 12/F
Central Plaza
18 Harbour Road
Wanchai, Hong Kong
Phone: (852) 9794 1673
Fax: (852) 9794 7895

**Russia
Ingersoll-Rand**
Kuznetsky Most 21/5
Entrance 3
Moscow 103895
Russia
Phone: (7) 501 923 9134
Fax: (7) 501 924 4625