

## MODELS ODR100A24, ODR100A36 AND ODR100A48 OFFSHORE DRILLING RIG WINCHES

### WARNING

***These Winches are not to be used  
for lifting or lowering people***

### LUBRICATION

**Warning: Lubricate the motor before using the Winch.** To avoid leakage during shipment, the oil was drained from the motor. A quantity of oil sufficient for one filling is contained in the can packed with the Winch. Before using the Winch, make certain both Drain Plugs (2) are securely threaded into place. Unscrew the Vent Cap (3) and pour the entire contents of the can (3 quarts) into the opening in the top of the Motor Case (1).

### MOTOR LUBRICATION

**Check oil daily and maintain level with opening in the side of the Motor Case.**

**When the Winch is subjected to temperatures above freezing:** After the Winch has been idle for several hours or overnight, loosen the Drain Plug (2) located at the bottom of the Motor Case (1) and allow the accumulated water to drain out. After draining the water, tighten the Plug in the bottom and remove a similar Plug on the side of the Motor Case. Unscrew the Vent Cap (3) and pour a sufficient quantity of the recommended oil through this opening to bring the oil level up to the side opening. Replace the Plug and Vent Cap.

**When the Winch is subjected to freezing temperatures:** Allow the Winch to remain idle long enough for the water content in the Motor Case (1) to separate from the oil, but not long enough for it to freeze. Drain the water and replenish the oil as above. Should this procedure be impractical, drain the entire contents from the Motor Case immediately after operation ceases, and pour the oil back into the Motor Case before resuming operation. If not drained, a sufficient quantity of water will eventually accumulate so that the Oil Splasher (30) will freeze fast.

**For Temperatures 30° to 80° F (-1° to 26° C)** use Ingersoll-Rand Medium Oil No. 50 or SAE 20 or 20W motor oil.

**For Temperatures below 30° F (-1° C)** use SAE 10 or 10W motor oil.

**For Temperatures above 80° F (26° C)** use SAE 30 motor oil.

**Weekly** insert a small quantity of Ingersoll-Rand Light Grease No. 28 or a good quality No. 2 Cup Grease into the Grease Fittings (38) located in the Valve Chest (37). Two or three strokes from a hand grease gun are sufficient for each Fitting.

### Gearing Lubrication

Every sixty to ninety days, remove the 1-1/4" Pipe Plug (109) from the Gear Case (105) and note if the visible portion of the gears is coated with grease. If the gears appear to lack lubrication, add a sufficient amount of the recommended grease to bring the grease level up to the Grease Plug (111) in the Gear Case Cover (110).

Use Ingersoll-Rand Medium Gear Grease No. 75 or a good quality No. 1 consistency gear grease. Leakage will probably result if gear oil is substituted.

For extremely severe service, or in surrounding temperatures over 120° F (49° C), use Ingersoll-Rand Heavy Gear Grease No. 70, or a good quality No. 2 consistency gear grease.

### HOSE AND HOSE CONNECTIONS

Use 1-1/2" (38 mm) hose with a suitable hose fitting (1-1/2" hose to 1-1/4" male pipe) for attaching it to the Valve Chest (37). Smaller hose and fittings will reduce the efficiency of the Winch.

### MOUNTING

Mount the Winch so that the axis of the Rope Drum (72) is horizontal, and so that the Vent Cap (3) is not more than 15° off top vertical center.

If the Winch is to be mounted in an inverted position, the Motor Case (1) must be rotated 180° in accordance with the following instructions:

1. Drain the oil.
2. Remove the twelve Motor Case Cap Screws (63).
3. Rotate the Motor Case 180°. The Vent Cap must not be more than 15° off top vertical center.
4. Replace the Cap Screws.
5. Fill with oil.

Refer All Communications to the Nearest  
Ingersoll-Rand Office or Distributor.

© Ingersoll-Rand Company 1980

Printed in U.S.A.

 **Ingersoll-Rand.**

P  
A  
R  
T  
S

B  
U  
L  
L  
E  
T  
I  
N

## MAINTENANCE INSTRUCTIONS

To adjust the brake rotate the Brake Adjusting Nut (127). Threading the Nut farther onto the Brake Adjusting Screw (126) tightens the brake; backing the Nut off loosens the brake.

When replacing a Planet Gear Shaft (76), press the damaged Shaft from the Rope Drum (72) by inserting a suitable rod through the cored hole in the small-seal end of the Rope Drum. Press in the new Shaft, wide-beveled end first, until the trailing face of the Shaft is 2-49/64" from the face of the shaft boss in the Rope Drum.

When installing any needle-type Bearing (75, 79 or 85), **always press on the stamped end of the bearing shell.** Use the proper needle bearing inserting tool listed in the part list.

### BUSHING REPLACEMENT

Replace a Reverse Valve Bushing (42) or a Rotary Valve Bushing (40) as follows:

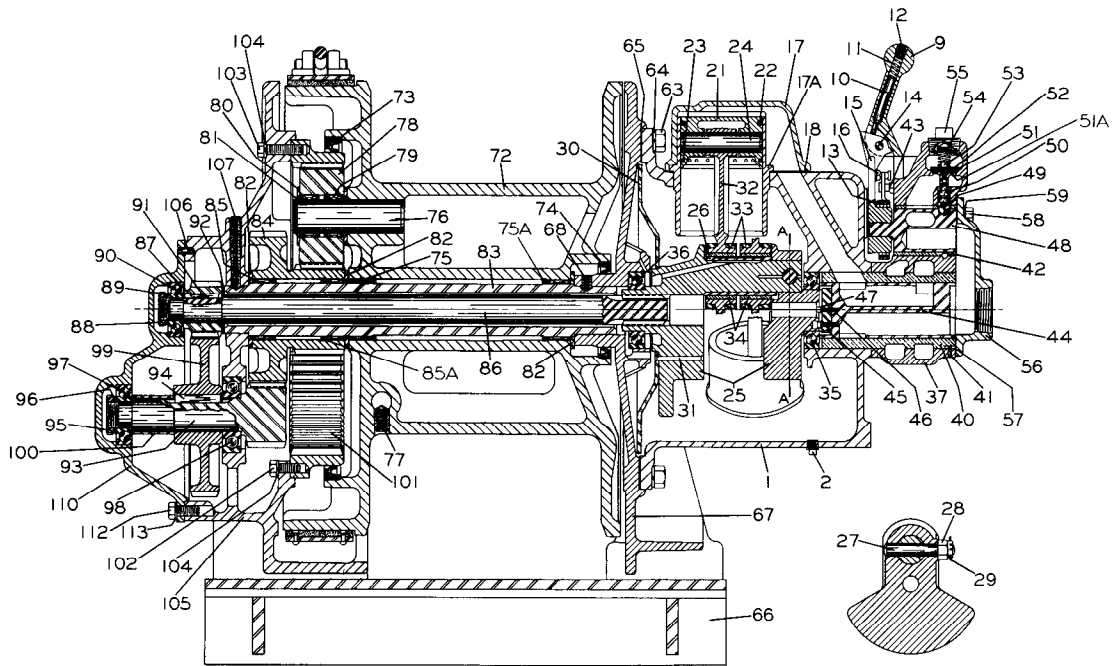
1. Remove the Valve Chest Cover Cap Screws (58), Valve Chest Cap Screws (60), and Throttle Valve Cap (55).
2. Withdraw the Throttle Valve (50) and Throttle Ball (49). The Throttle Ball may be lifted out with a quantity of sticky grease on the end of a rod.
3. Withdraw the Reverse Valve (48) and Rotary Valve (44). A bolt can be threaded into the tapped hole in the valve face to serve as a handle. The Reverse Valve is tapped 1/2"-13 thread. The Rotary Valve is tapped 5/8"-11 thread.
4. Thread a No. HU-932 Valve Chest Jack Bolt, or any 5/8"-11 thread bolt having at least 4" of thread, into the tapped hole in the lug on each side of the Valve Chest (37) until the end of the Bolt contacts the Motor Case (1). Tighten each bolt a fraction of a turn at a time until the Valve Chest is removed from the Motor Case.
5. Support the face of the Valve Chest that contacts the Motor Case and, using an arbor that will clear the **Bushing Keys** (41), press out the old Bushings.
6. Turn the Valve Chest over so that the face that contacts the Motor Case is up.
7. Align the groove in the new Reverse Valve Bushing with the Bushing Key that protrudes into the small bore of the Valve Chest, and press in the new Bushing until its leading face is flush with the supported face of the Valve Chest.
8. Align the groove in the new Rotary Valve Bushing with the Bushing Key that protrudes into the large bore of the Valve Chest, and press in the new Bushing until its leading face is flush with the supported face of the Valve Chest.
9. Insert the No. 49265 Throttle Valve Stem Reamer or a .627" dia. reamer into the throttle valve chamber and ream the hole through the bushing wall in which the Throttle Valve Ball (49) operates.
10. Check the fit of the Reverse Valve (48) in the Reverse Valve Bushing. If tight, ream the Bushing 2.250". **Caution:** The Reverse Valve is chrome plated; do not lap.
11. Check the fit of the Rotary Valve in the Rotary Valve Bushing. If the Valve is tighter than a good running fit, lap it in with a mild, fine-grain lapping compound whose abrasive agent will break up rapidly. Wash the parts in clean kerosene to remove all trace of the compound. If the Valve is too tight to lap, ream the Bushing 2.875".
12. Align the cam groove on the Reverse Valve with the hole through the wall of the Bushing in which the Throttle Valve Ball operates.
13. Apply a few drops of light oil to the Throttle Valve Ball and to the stem of the Throttle Valve. Insert the Ball, Valve and Throttle Valve Spring (54) into the valve chamber and retain them with the Throttle Valve Cap (55).
14. Place the Throttle Lever Spring (13) on the Control Arm (15) so that the coil encircles the protruding hub. Rotate the Spring until its lower leg contacts the Throttle Spring Stop Pin (16) which projects from the Control Arm. Grasp the upper leg of the Spring and pull it over the top of the Stop Pin so that the Spring legs are now on opposite sides of the Stop Pin.
15. Install the Throttle Control Arm so that its square socket slides over the square shank of the Reverse Valve, and the Spring legs are on opposite sides of the Stop Pin on the Valve Chest.
16. Align the holes through the Valve Chest with those in the Motor Case (1) and start the protruding end of the Rotary Valve Bushing (40) squarely into the Motor Case. Protect the face of the Valve Chest with a hardwood block and press or drive in the Bushing until the Valve Chest contacts the Motor Case.
17. Insert the Rotary Valve (44) into the Rotary Valve Bushing. Rotate the Valve slowly until the Valve Key Screws (46) located in the end of the Valve engage matching holes in the Crank (25).
18. Apply the Valve Chest Cover (56) and retain it with the Valve Chest Screws (60) and Valve Chest Cover Cap Screws (58).

### CRANK ASSEMBLY

The two sections of the Crank (25) are matched before final machining, and the web of each section is stamped with an identification mark as AA17, CC21, XX19, etc. Only sections bearing identical marking can be used together. If more than one Crank is disassembled at one time, be sure only matched parts are assembled together.

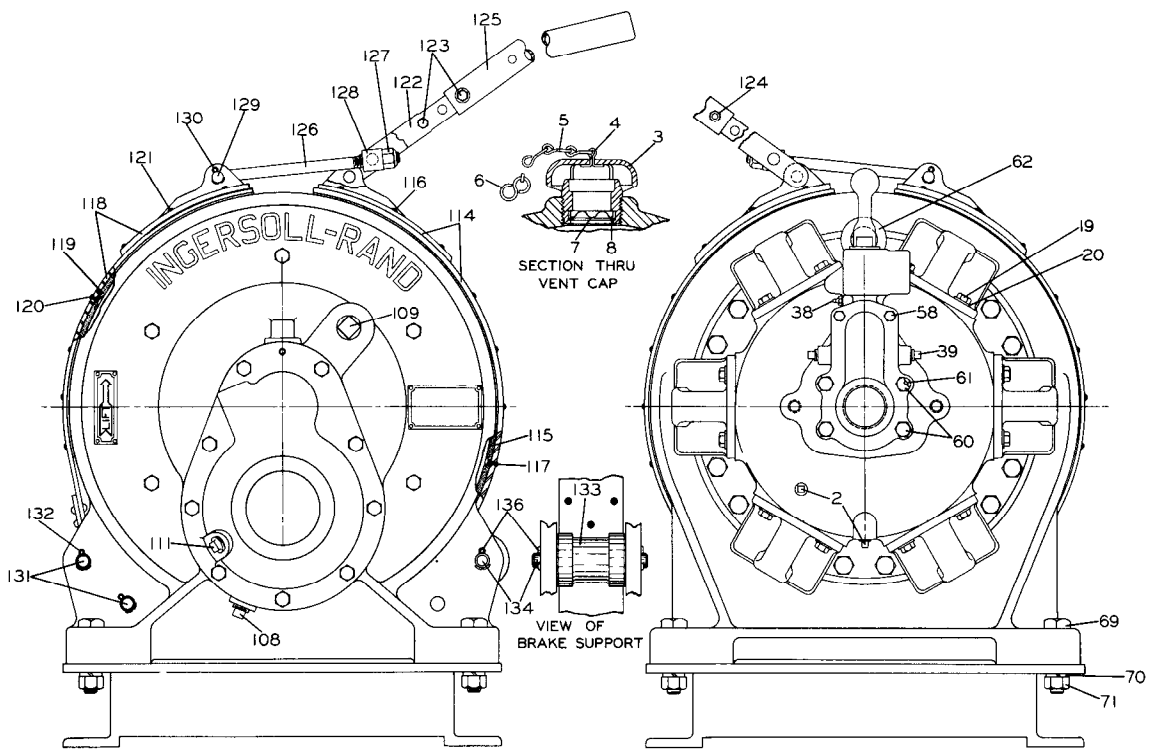
### PARTS WITH PROTECTIVE COATING

All exposed parts originally furnished on your ODR Winch were given a special protective coating to help prevent rust and corrosion. If you are replacing a part that originally had this protective coating, and want the new part to be specially coated, it must be so specified on the order. **Unless so specified on the order, parts furnished as repair items will not have the special protective coating.**



(Dwg. TPA123-2)

**Size ODR100A24 Offshore Drilling Rig Winch**  
 (Construction typical of Sizes ODR100A36 and ODR100A48 except for length of Rope Drum)



**Gear Case End View**

**Motor End View**

(Dwg. TPA125-1)

## PART NUMBER FOR ORDERING

## PART NUMBER FOR ORDERING

★	Motor Assembly	K6U-A501	51A	Throttle Valve Face Spacer	K6U-280
★ 1	Motor Case	K6U-501	52	Throttle Valve Face Cap	K6U-257
2	Drain Plug (2)	D02-402	53	Valve Face Cap Retaining Screw	G57T-634
3	Vent Cap	D02-303A	● 54	Throttle Valve Spring	D10-275
4	Vent Cap Cotter	D02-893	55	Throttle Valve Cap	K6U-943
5	Vent Cap Chain	D02-891	56	Valve Chest Cover	K6U-546
6	S-Hook	D02-421	● 57	Valve Chest Cover Gasket	K6U-928
7	Vent Cap Screen	D02-889	58	Valve Chest Cover Cap Screw (2)	D02-506
8	Vent Cap Screen Retainer	6CND-233-1/2	59	Cover Cap Screw Lock Washer (2)	D02-321
9	Throttle Lever	HU-556	60	Valve Chest Cap Screw (4)	K6U-548
10	Throttle Lever Latch	HU-869	61	Valve Chest Cap Screw Lock Washer (4)	D10-322
● 11	Latch Spring	HU-567	62	Motor Eyebolt	KU-888
12	Throttle Lever Set Screw	IU-842	63	Motor Case Cap Screw (12)	215-36
● 13	Throttle Lever Spring	K6U-412	64	Motor Case Cap Screw Lock Washer (12)	A-67
14	Throttle Lever Pin	HU-870	65	Motor Case Gasket	K6U-592
*	Throttle Lever Pin Cotter (2) (3/32" x 3/4")	D02-524	● 66	Base	
15	Throttle Control Arm	K6U-555		for ODR100A24	K6UL-564
16	Throttle Lever Spring Stop Pin	D02-553		for ODR100A36	ODR100A36-564
	Cylinder Assembly (6)	K6U-A505A		for ODR100A48	ODR100A48-564
17	Head	K6U-H505A	67	Motor Mounting Bracket	
17A	Sleeve	K6U-L505A		for ODR100A24	K6U-502
● 18	Cylinder Gasket (6)	K6U-507		for ODR100A36	ODR100A36-789
19	Cylinder Cap Screw (24)	G8-113		for ODR100A48	ODR100A36-789
20	Cylinder Cap Screw Washer (24)	K6U-504	68	Drum Shaft Short Set Screw	HU-867
21	Piston Assembly (6)	K6U-A513A	69	Base Bolt (8)	K6UL-775
● 22	Piston Ring (6)	K6U-337	70	Base Bolt Lock Washer (8)	D01-692
● 23	Oil Regulating Piston Ring (6)	K6U-338	71	Base Bolt Nut (8)	DU-562
24	Piston Wrist Pin (6)	K6U-514	72	Rope Drum	
	Crank Assembly	K6U-A516		for ODR100A24	K6UL-324
25	Crank	K6U-516		for ODR100A36	ODR100A36-324
● 26	Crank Pin Sleeve	K6U-519		for ODR100A48	ODR100A48-324
27	Crank Lock Pin	KU-520	● 73	Rope Drum Large Seal	K6U-137
28	Crank Lock Pin Nut	D02-317	● 74	Rope Drum Small Seal	20-137A
29	Crank Lock Pin Cotter (1/8" x 1-1/4")	D02-330	● 75	Drum Bearing (2)	
30	Oil Splasher	KU-540		for ODR100A24	K6U-466
31	Oil Splasher Long Rivet (2)	K6U-541		for ODR100A36	ODR100A48-466
*	Oil Splasher Short Rivet (2)	241-712	75A	for ODR100A48	ODR100A48-466
32	Connecting Rod (6)	K6U-509		Bearing Retainer (2)	23-406
33	Connecting Rod Ring (4)	K6U-510	76	Planet Gear Shaft (3)	K6U-787
● 34	Connecting Rod Bushing (2)	K6U-511	77	Rope Set Screw (2)	K6U-381
● 35	Crank Valve End Bearing	KU-518	78	Planet Gear (3)	K6U-732
● 36	Crank Splined End Bearing	KU-895	● 79	Planet Gear Bearing (6)	K6U-788
	Valve Chest Assembly	K6U-A545	80	Planet Gear Spacer (6)	K6U-743
37	Valve Chest	K6U-545	81	Planet Gear Retainer (3)	K6U-362
38	Grease Fitting (2)	23-188	82	Drum Thrust Plate (3)	K6U-469
39	Brake Inlet Plug (2)	D02-402	83	Drum Shaft	
40	Rotary Valve Bushing	K6U-525S		for ODR100A24	K6UL-459
41	Bushing Key (2)	HU-538		for ODR100A36	ODR100A36-459
42	Reverse Valve Bushing	K6U-945S	84	for ODR100A48	ODR100A48-459
43	Throttle Lever Spring Stop Pin	D02-553	84	Intermediate Gear	K6U-364
† 44	Rotary Valve	K6U-526	● 85	Intermediate Gear Bearing (2)	K6U-366
45	Rotary Valve Key	K6U-527	85A	Bearing Retainer (2)	23-406
46	Rotary Valve Key Screw (2)	4E-638	86	Motor Shaft	
47	Valve Key Screw Lock Washer (2)	4U-58		for ODR100A24	K6UL-316
48	Reverse Valve Assembly	K6U-A944	87	for ODR100A36	ODR100A36-316
*	Reverse Valve O-ring	R18-311	88	for ODR100A48	ODR100A48-316
49	Throttle Valve Ball	K6U-941	89	Motor Pinion Key	EEG-768
50	Throttle Valve	K6U-940	● 90	Motor Shaft Nut	215-65
● 51	Throttle Valve Face	K6U-259	91	Motor Shaft Nut Lock	215-66
				Motor Shaft Bearing	215-55
				Motor Shaft Pinion	K6U-319

★ When ordering a Motor Assembly or Motor Case, the Size of the Winch must be specified on the order to assure that the nameplate on the new Motor Case is stamped with the correct size symbol.

\* Not illustrated.

● To keep downtime to a minimum, it is desirable to have on hand certain repair parts. We recommend that you stock one (pair or set) of each part indicated by a bullet (●) for every four tools in service.

† The Rotary Valve listed is for Overwinding Winches only. For Underwinding Winches order Rotary Valve No. K6U-526R. If a Winch is to be converted from Overwinding to Underwinding, the brake parts must be rearranged. Consult the nearest Ingersoll-Rand Office.

## PART NUMBER FOR ORDERING

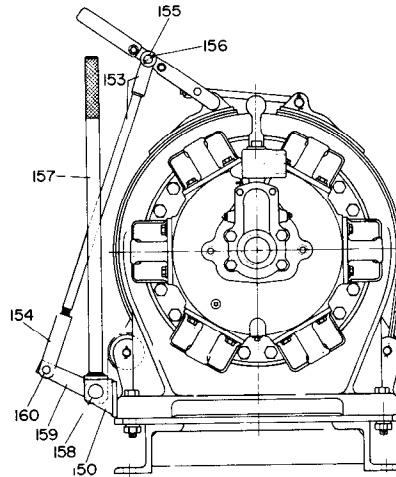
## PART NUMBER FOR ORDERING

92	Motor Pinion Thrust Washer . . . . .	K6U-397	122	Brake Lever . . . . .	231-715
93	Drive Shaft . . . . .	K6U-358	123	Brake Lever Bolt (2) . . . . .	23-717
94	Drive Gear Key . . . . .	23-70	124	Brake Lever Bolt Nut (2) . . . . .	D02-418
95	Drive Shaft Nut . . . . .	215-73	*	Brake Lever Screw . . . . .	W99-596
96	Drive Shaft Nut Lock . . . . .	215-74	*	Brake Lever Screw Lock Washer . . . . .	L01-67
● 97	Drive Shaft Outer Bearing . . . . .	215-63	125	Brake Lever Extension . . . . .	231-625
● 98	Drive Shaft Inner Bearing . . . . .	215-41	126	Brake Adjusting Screw . . . . .	231-719
99	Drive Gear . . . . .	K6U-357	127	Brake Adjusting Nut . . . . .	D01-341A
100	Drive Gear Spacer . . . . .	K6U-356	128	Brake Trunnion . . . . .	215-159
101	Ring Gear . . . . .	K6U-781	129	Brake Bracket Pin . . . . .	K6U-147
102	Ring Gear Short Cap Screw . . . . .	215-148	130	Bracket Pin Cotter (2) (1/8" x 1-1/4") . . . . .	D02-330
103	Ring Gear Long Cap Screw (5) . . . . .	2100-457	131	Brake Anchor Pin (2) . . . . .	K6U-206
104	Ring Gear Cap Screw Lock Washer (6) . . . . .	D10-322	132	Anchor Pin Cotter (4) (1/8" x 1-1/4") . . . . .	D02-330
105	Gear Case . . . . .	K6U-353	133	Brake Support . . . . .	K6U-161A
106	Gear Case Cover Dowel . . . . .	HU-627	134	Brake Support Pin . . . . .	K6U-206
107	Drum Shaft Long Set Screw . . . . .	K6U-868	136	Brake Support Cotter (2) . . . . .	D02-330
108	Grease Plug . . . . .	22SR-165	*	Exhaust Muffler . . . . .	KU-674
109	1-1/4" Pipe Plug . . . . .	E5UD-947	*	Motor Nameplate . . . . .	K5W-99
110	Gear Case Cover . . . . .	K6U-352	*	Nameplate Screw (4) . . . . .	R4K-302
*	Grease Fitting . . . . .	23-188	*	Winch Nameplate . . . . .	DU-301
111	Grease Plug . . . . .	22SR-165	*	Nameplate Screw (4) . . . . .	R4K-302
112	Gear Case Cover Cap Screw (9) . . . . .	215-148	*	Caution Tag . . . . .	TA-147A
113	Gear Case Cover Cap Screw Lock Washer (9) . . . . .	D10-322	*	Caution Tag Screw (4) . . . . .	R4K-302
114	Long Brake Band . . . . .	K6U-252	*	Grease Gun . . . . .	P25-228
● 115	Long Brake Lining . . . . .	K6U-255	*	Valve Chest Jack Bolt . . . . .	HU-932
116	Brake Lining Long Rivet (9) . . . . .	K6U-157	*	Piston Ring Compressor . . . . .	HU-933
117	Brake Lining Short Rivet (32) . . . . .	K6U-156	*	Planet Gear Bearing Inserting Tool . . . . .	49261
● 118	Short Brake Band . . . . .	K6U-152	*	Rope Drum Bearing Inserting Tool or Intermediate Gear Bearing Inserting Tool . . . . .	49262
119	Short Brake Lining . . . . .	K6U-155	*	Throttle Valve Stem Reamer . . . . .	49265
120	Brake Lining Short Rivet (17) . . . . .	K6U-156			
121	Brake Lining Long Rivet (9) . . . . .	K6U-157			

\* Not illustrated.

● To keep downtime to a minimum, it is desirable to have on hand certain repair parts. We recommend that you stock one (pair or set) of each part indicated by a bullet (●) for every four tools in service.

**BRAKE LINKAGE PARTS**  
(Used on ODR100A36 and ODR100A48)



(Dwg. TPB514)

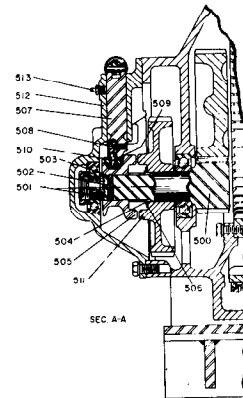
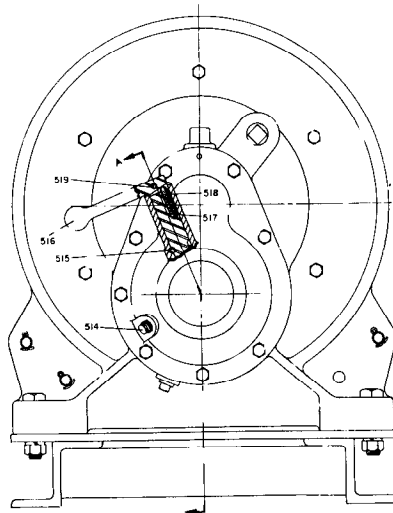
PART NUMBER FOR ORDERING

PART NUMBER FOR ORDERING

150	End Control Bracket (2) . . . . .	ODR100A36-783	157	End Control Handle . . . . .	ODR100A36-123
*	Control Bracket Cap Screw (4) . . . . .	215-13	158	End Control Shaft	
*	5/8" Lock Washer (4) . . . . .	A-67		for ODR100A36 . . . . .	ODR100A36-780
153	Brake Lever Link . . . . .	ODR100A36-786		for ODR100A48 . . . . .	ODR100A48-780
154	Brake Yoke . . . . .	ODR100A36-782	159	End Control Arm . . . . .	ODR100A36-784
155	Brake Link Pin . . . . .	ODR100A36-770	160	Control Arm Pin . . . . .	ODR100A36-771
156	Link Pin Cotter (2) . . . . .	D02-330	*	Control Shaft Pin (2) . . . . .	D20-820

\* Not illustrated.

**DISENGAGING CLUTCH PARTS**



(Dwg. TPB208)

PART NUMBER FOR ORDERING

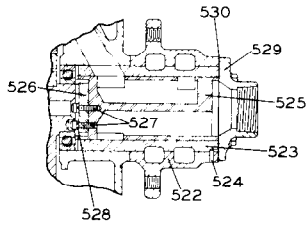
PART NUMBER FOR ORDERING

500	Drive Shaft . . . . .	K6U-C358	511	Drive Gear . . . . .	K6U-C357
501	Clutch Jaw Lock Plug . . . . .	HU-864	512	Gear Case Cover . . . . .	K6U-C352
502	Clutch Jaw Lock Spring . . . . .	K4U-863	513	Grease Fitting . . . . .	23-188
503	Clutch Jaw Lock Ball . . . . .	G601-65	514	Grease Plug . . . . .	22SR-165
504	Drive Gear Washer Retainer . . . . .	K6U-362	515	Eccentric Shaft Lock Screw . . . . .	J3-823
● 505	Clutch Jaw . . . . .	K4U-568	516	Clutch Lever . . . . .	HU-565
506	Drive Gear Washer (2) . . . . .	K6U-363	● 517	Latch Spring . . . . .	HU-567
507	Clutch Eccentric Shaft . . . . .	K6U-857	● 518	Clutch Latch . . . . .	HU-566
508	Eccentric Pin Lock Screw . . . . .	HU-860	519	Clutch Lever Pin . . . . .	HU-861
509	Clutch Eccentric Pin . . . . .	HU-859	*	3/8" Lock Washer . . . . .	D02-321
510	Clutch Eccentric Roller . . . . .	HU-858			

\* Not illustrated.

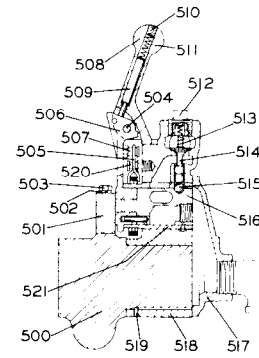
● To keep downtime to a minimum, it is desirable to have on hand certain repair parts. We recommend that you stock one (pair or set) of each part indicated by a bullet (●) for every four tools in service.

## REMOTE CONTROL PARTS



**Remote Control Valve Chest Assembly**

PART NUMBER FOR ORDERING



**Remote Control Block Assembly**

(Dwg. TPC156)

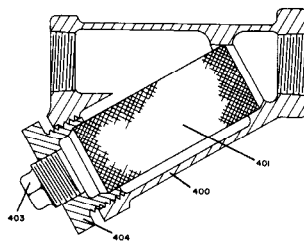
PART NUMBER FOR ORDERING

	Remote Control Block Assembly . . . . .	KU-A685			Control Block Valve Chest Cover . . . . .	KU-546A
500	Remote Control Block . . . . .	KU-685	517		Control Block Valve Chest . . . . .	KU-876A
501	Control Arm Retainer . . . . .	HU-687	518		Bushing Key (2) . . . . .	HU-538
502	3/8" Lock Washer (2) . . . . .	D02-321	519		Throttle Lever Spring Stop Pin. . . . .	D02-553
503	Control Arm Retainer Screw (2) . . . . .	HU-865	520		Control Block Reverse Valve	
504	Throttle Lever Pin . . . . .	HU-870	521		Bushing . . . . .	KU-945
*	Throttle Lever Pin Cotter (2) . . . . .	D02-524	*		Grease Fitting (2) . . . . .	23-188
505	Control Block Throttle Lever Spring . . . . .	KU-412	*		Brake Inlet Plug (2) . . . . .	D02-402
506	Control Block Throttle Control Arm . . . . .	KU-555A			Remote Control Valve Chest Assembly . . . . .	K6U-A686
507	Throttle Lever Spring Stop Pin. . . . .	D02-553	522		Remote Control Valve Chest . . . . .	K6M-545
508	Control Block Throttle Lever. . . . .	HU-556	523		Rotary Valve Bushing. . . . .	K6U-525
● 509	Throttle Lever Latch . . . . .	HU-869	524		Bushing Key . . . . .	HU-538
510	Throttle Lever Set Screw . . . . .	HU-842	525		Rotary Valve . . . . .	K6U-526
● 511	Latch Spring. . . . .	HU-567	526		Rotary Valve Key . . . . .	K6U-527
512	Control Block Throttle Valve Cap. . . . .	KU-943	527		Rotary Valve Key Screw (2) . . . . .	4E-638
513	Control Block Throttle Valve Spring . . . . .	HU-942	528		Valve Key Screw Lock Washer (2) . . . . .	4U-58
514	Control Block Poppet Throttle Valve . . . . .	KU-940	529		Remote Control Valve Chest Cover. . . . .	K6M-546
515	Control Block Throttle Valve Ball. . . . .	D10-280	● 530		Remote Control Valve Chest Cover	
516	Control Block Reverse Valve . . . . .	KU-944			Gasket . . . . .	K6M-928

\* Not illustrated.

● To keep downtime to a minimum, it is desirable to have on hand certain repair parts. We recommend that you stock one (pair or set) of each part indicated by a bullet (●) for every four tools in service.

## AIR STRAINER ASSEMBLY



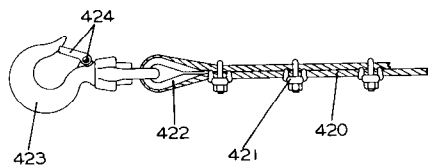
(Dwg. TPD122-1)

PART NUMBER FOR ORDERING

	Air Strainer Assembly . . . . .				K4U-A267AT
400	Air Strainer Screen . . . . .				K4U-61AT
401	Air Strainer Plug . . . . .				22SR-165
403	Air Strainer Cap . . . . .				K4U-268AT
404	Air Strainer Nipple (1-1/4" x 2" long). . . . .				KKM-286
*					

\* Not illustrated.

**WIRE ROPE AND FITTINGS**



(Dwg. TPD121-1)

PART NUMBER FOR ORDERING

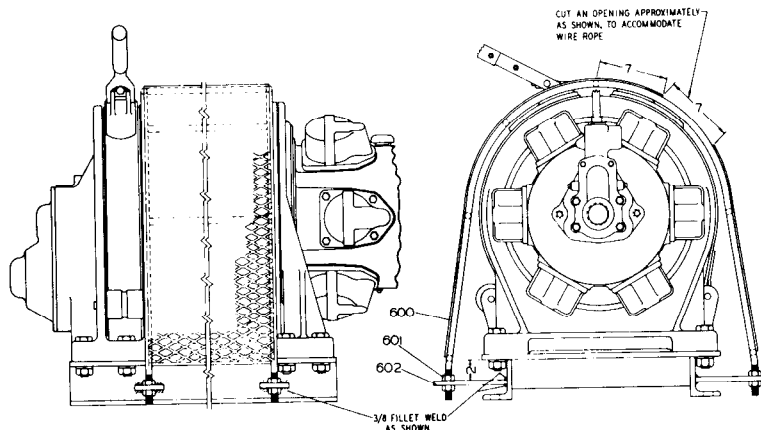
		↓	↓
		5/8" Wire Rope	3/4" Wire Rope
420	Wire Rope (length as specified) . . . . .	235-372	275-372
	Swivel Type Latch Hook Assembly . . . . .	K4U-AS601-5/8	K6U-AS601-3/4
421	Rope Clamp (3) . . . . .	235-375	275-375
422	Rope Thimble . . . . .	235-602	275-602
423	Swivel Hook . . . . .	K6U-S601	K6U-S601
424	Hook Latch Kit (individual parts not sold separately) . . . . .	D04-S4055	D04-S4055

**MUFFLER EQUIPMENT**

PART NUMBER FOR ORDERING

Exhaust Muffler . . . . .	KU-674
Muffler Nipple (2" x 2-1/2" long pipe nipple) . . . . .	K6U-675
Reducing Coupling . . . . .	K6U-677

**DRUM GUARDS**



(Dwg. TPB565)

PART NUMBER FOR ORDERING

PART NUMBER FOR ORDERING

600	Drum Guard for ODR100A24 . . . . . for ODR100A36 . . . . . for ODR100A48 . . . . .	K6UL-298 K6UL38-298 K6UL48-298	602	Plate (4) for ODR100A24 . . . . . for ODR100A36 and ODR100A48 . . . . .	K6U-299 K6UL36-299
601	5/8"-11 thd Nut (8) . . . . .	K6U-8			