

SERIES MVA008, MVA017 AND MVA034 REVERSIBLE MULTI-VANE® MOTORS

Always operate, inspect and maintain this tool in accordance with American National Standards Institute Safety Code for Portable Air Tools (ANSI B186.1) and any other applicable safety codes and regulations.

FOR TOP PERFORMANCE AND MAXIMUM DURABILITY OF PARTS, OPERATE THIS MOTOR AT 90 psig (6.2 bar/620 kPa) AIR PRESSURE WITH 3/4" (19 mm) AIR SUPPLY HOSE.

WARNING

Always turn off the air supply and disconnect the air supply hose before installing, removing or adjusting any accessory on this Motor, or before performing any maintenance on this Motor. Failure to do so could result in injury.

LUBRICATION

Oil: Ingersoll-Rand No. 50 Lubricant.

Grease: Ingersoll-Rand No. 28 Lubricant.

We recommend the use of an air line lubricator in the air supply line. Attach the unit as close to the tool as practical. Where the lubricator cannot be permanently mounted, use an Ingersoll-Rand 3LUB8 Lubricator (1/2" pipe tap inlet) for Models MVA008 and MVA017 and an Ingersoll-Rand 6LUB12 Lubricator (3/4" pipe tap inlet) for Model MVA034. The 3LUB8 has a 1/6 pt (79 mL) capacity; the 6LUB12 has a 1/4 pt (131 mL) capacity. For permanent installations, we recommend using an Ingersoll-Rand C22-04-G00 Filter-Lubricator-Regulator Unit (1/2" pipe tap inlet and outlet) for Models MVA008 and MVA017 and an Ingersoll-Rand C31-06-G00 Filter-Lubricator-Regulator Unit (3/4" pipe tap inlet and outlet) for Model MVA034. The C22-04-G00 has a 1/2 pt (237 mL) capacity and the C31-06-G00 has a 1-3/4 pt (830 mL) capacity. Larger capacity units may be used but do not use a unit having less than 1/2" pipe tap inlet and outlet. Adjust the lubricator so there is a slight oil mist in the exhaust.

For prompt service and genuine Ingersoll-Rand parts, place orders with the nearest Ingersoll-Rand Office or Authorized Distributor.

NOTICE

The use of other than genuine Ingersoll-Rand replacement parts may result in decreased Motor performance and increased maintenance, and may invalidate all warranties.

Refer All Communications to the Nearest
Ingersoll-Rand Office or Distributor.

© Ingersoll-Rand Company 1989

Printed in U.S.A.

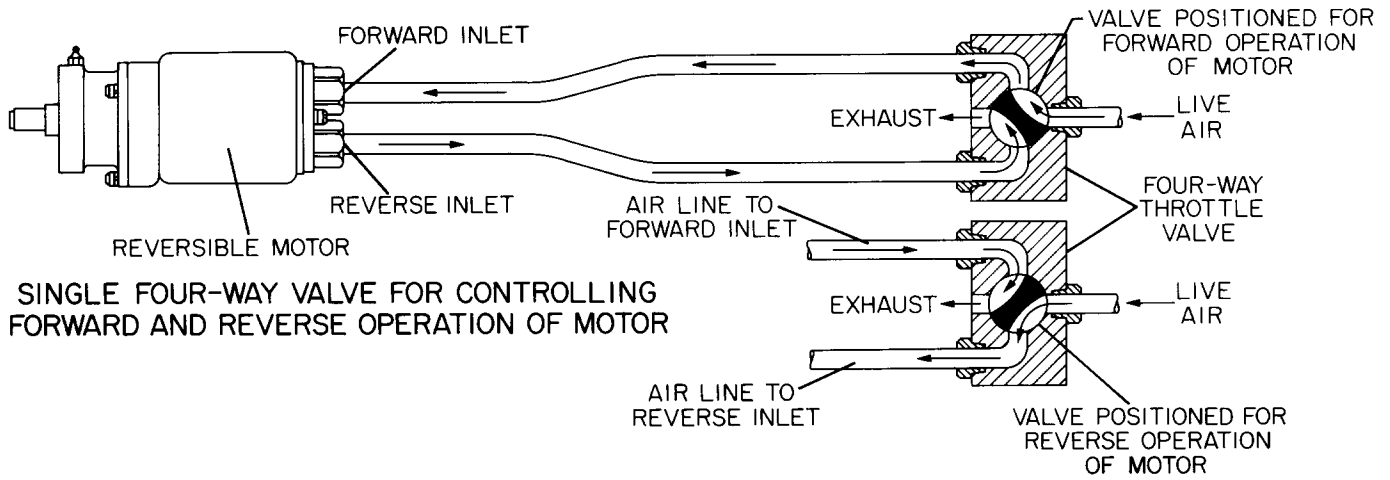
INGERSOLL-RAND®
AIR MOTORS

P
A
R
T
S

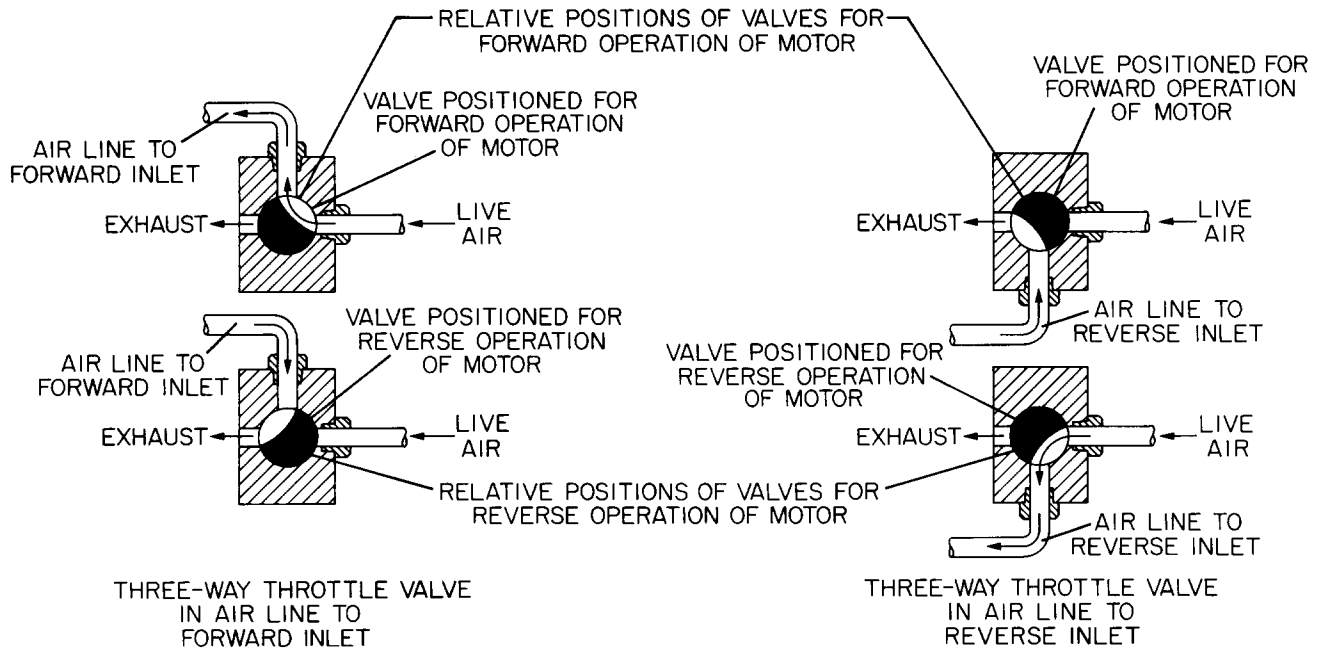
B
U
L
L
E
T
I
N

NOTICE

When these motors are used on applications requiring a reversible motor, a 4-way throttle valve or two 3-way throttle valves must be used in the air supply line in accordance with the following schematic diagram. When the application requires a nonreversible motor, a 2-way in-line valve can be used in the air supply line. In either case, the inlet and outlet of the valve must be equal in size, and preferably one size larger, than the inlet of the motor.



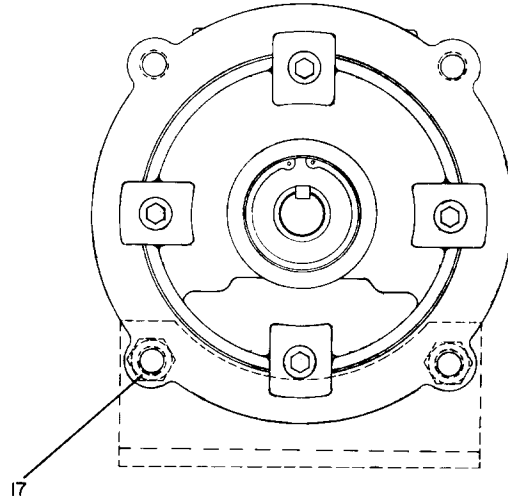
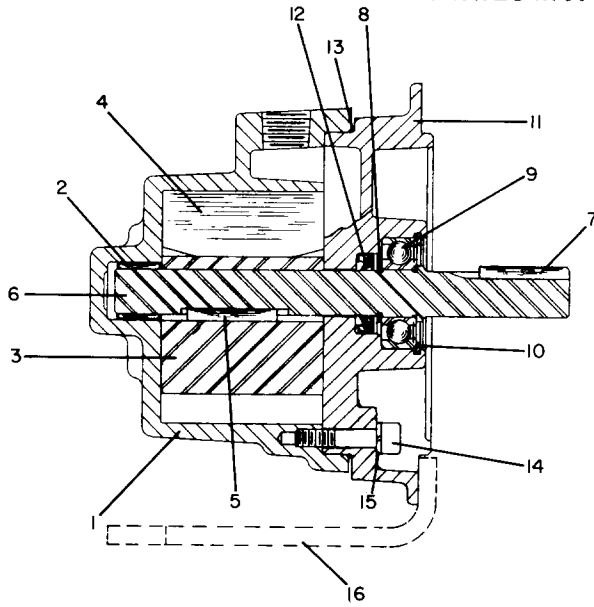
Single Four-Way Valve for Controlling Forward and Reverse Operation of Motor



Two Three-Way Valves for Controlling Forward and Reverse Operation of Motor

(Dwg. TPB176)

SERIES MVA AIR MOTOR



(Dwg. TPB476-1)

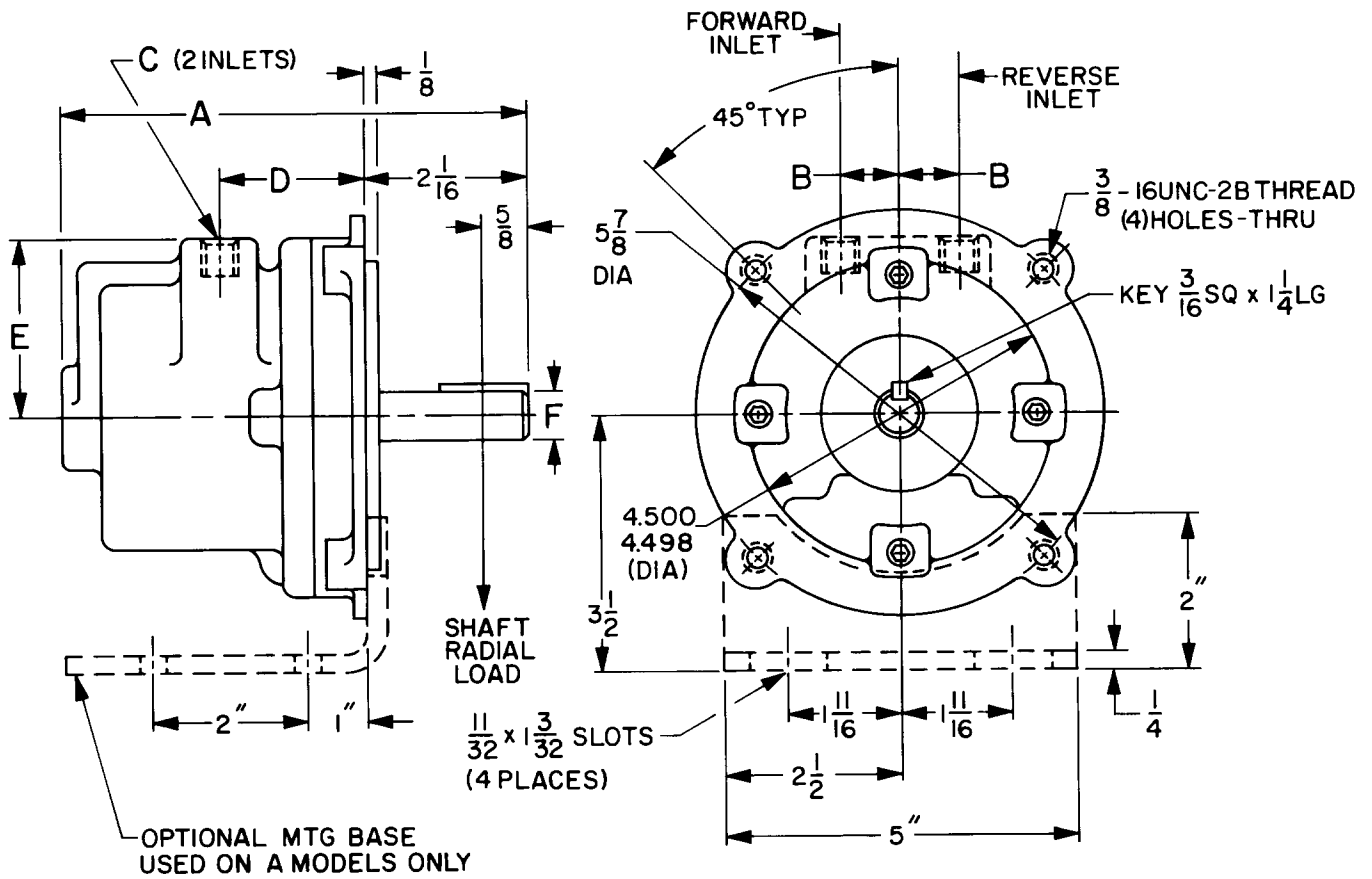
PART NUMBER FOR ORDERING

1	Cylinder Assembly for MVA008 for MVA017 for MVA034	MVA008-A3 MVA017-A3 MVA034-A3
● 2	Rear Rotor Shaft Bearing	MVA008-22
3	Rotor for MVA008 for MVA017 for MVA034	MVA008-53 MVA017-53 MVA034-53
● 4	Vane Packet (set of 6) for MVA008 for MVA017 for MVA034	MVA008-42-6 MVA017-42-6 MVA034-42-6
● 5	Rotor Key for MVA008 for MVA017 for MVA034	TC-410 J5-754 MVA034-610
6	Rotor Shaft for MVA008 for MVA017 for MVA034	MVA008-52 MVA017-52 MVA034-52
7	Rotor Shaft Key	J5-754
8	Rotor Shaft Retainer	MVA008-218
● 9	Front Rotor Shaft Bearing	R2H-97
10	Front Rotor Shaft Bearing Retainer	S12-118
11	Front Head Assembly	MVA008-A240A
● 12	Rotor Shaft Seal	M0V010AA-271
● 13	Front Head Seal	MVA008-103
14	Front Head Cap Screw (4)	R3F-7
15	Front Head Cap Screw Lock Washer (4)	8U-58
*	Muffler	M0V010AA-674
	Mounting Foot Kit	MVA008-K4
16	Mounting Foot	MVA008-4
17	Mounting Foot Bolt (2)	D02-506
*	Mounting Foot Lock Washer (2)	D02-321
*	Nameplate	MVA008-301
*	Nameplate Screw (2)	MVA008-302

* Not illustrated.

● To keep downtime to a minimum, it is desirable to have on hand certain repair parts. We recommend that you stock one (pair or set) of each part indicated by a bullet (●) for every four tools in service.

DIMENSIONS OF SERIES MVA MOTORS



(Dwg. TPB507-1)

Model	A	B	C (NPT)	D	E	F (DIA)
MVA008A8B	5-7/16	7/8	3/8	1-7/8	2-1/2	.6250 .6245
MVA017A8B	6-11/16	7/8	3/8	1-7/8	2-1/2	.6250 .6245
MVA034A8B	8-7/16	1-3/16	1/2	2	2-5/8	.8750 .8745