

TRAVEL-AIR® HOSE CARRIERS MODELS AHC34, AHC68 AND AHC100

INSTALLATION INSTRUCTIONS

Refer to sectional and schematic views on pages 4 and 5.

1. Use spacers 1" thick between the Track and the beam web to provide sufficient clearance for the Inlet Elbow Bolts. Thicker spacers may be required for clearing brackets, fish joint bolts, etc., protruding from the beam. Use block-type spacers that are long enough to support the full height of the Track—lengths of pipe or tubing are not satisfactory. Because of the variations between installations, neither spacers nor mounting bolts are furnished with the Carrier. They must be supplied by the customer.
2. Mount the Center Track (1), open side out, on either side of the beam, properly positioning it to obtain the maximum travel in the direction desired. (See schematic for proper location of air inlet.) Be sure the heads on all mounting bolts and Connecting Plate Bolts (67) are **inside** the Track, otherwise the protruding ends of the bolts may interfere with the carriage.
3. Attach one Wire Rope Sheave Assembly to the Hose Carrier Frame (6), positioning the Yoke (32) so that the Sheave (25) is tilted and about 15° in a counter-clockwise direction out of parallel with the plane of the Hose Carrier Sheave (9).
4. Attach the remaining Rope Sheave Assemblies to the Track End Caps (35) positioning each Yoke (32) so that the Sheave is tilted about 30° from vertical as shown in the schematic view.
5. Screw the Air Outlet Block (45) onto the Hose Nipple (44) in one end of the Air Hose (43).
6. Insert the Air Outlet Block (45), hose end last, into the end of the Center Track nearest the air inlet. Insert the Hose Carrier Frame (6), small sheave end first, into the same end of the Center Track.
7. Attach a 10 ft. length of Extension Track (65) to the end of the Center Track nearest the air inlet. This 20 ft. of Track comprise the basic track unit.
8. Mount additional sections of Extension Track as required, being sure to add equal footage to each end of the basic 20 ft. of track already mounted.
9. Reeve the Air Hose (43) around the Sheaves (9 and 10) and bring the loose end out of the track slot.
10. Screw the Air Inlet Elbow (2) onto the Hose Nipple (44) in the free end of the Hose (43), being careful to prevent twisting the Hose.
11. Attach the Air Inlet Elbow (2) to the Center Track (1).
12. Select the Track End Cap (35) on which the Wire Rope Sheave is properly tilted (see schematic view), and install this Cap on the end of the Track nearest the Air Inlet Elbow.
13. Anchor one end of the Wire Rope (39) in the socket in the Air Outlet Block (45) with the Rope Set Screws (49).
14. Pass the free end of the Wire Rope around the Sheave on the installed Track End Cap (35), then through the Track to the opposite end and around the Sheave on the other Cap. Complete the reeving by passing the Rope around the Sheave on the Carrier Frame and out through the hole in the End Cap. Slip the Rope Anchor Spring (42) over the small end of the Rope Anchor (40), then slide the Anchor, small end first, onto the free end of the Wire Rope and into the hole in the Cap. Pull on the free end of the Wire Rope to remove the slack and, while holding it in this state, slide the Rope Anchor along the Rope until the Rope Anchor Spring seats against the End Cap, then tighten the Rope Set Screws (41).

HOW TO ORDER COMPLETE TRAVEL-AIR HOSE CARRIERS

The minimum track length for any Travel-Air Hose Carrier is 20 feet. This basic length is made up of one 10 ft. Center Track Unit and one 10 ft. Extension Track Unit. These two Units are required for every installation. Longer runs are made by attaching additional Extension Track Units to the basic 20 ft. of track. For track lengths divisible by 10, equal footage must be added to **each** end of the basic track. **For example:** If the desired total track length is 40 feet, add one 10 ft. Extension Track Unit to each end; if the desired track length is 50 feet, add one 10 ft. Extension Track Unit and one 5 ft. Extension Track Unit to each end.

For installations where the total track length must be 25, 35, 45, etc. feet, the extra 5 ft. of track must be located on that half of the track in which the Carrier Frame operates.

Consult the table on page 2 to determine the total number of Extension Track Units, in addition to the Center Track Unit, required for various total track lengths. For lengths over 100 ft. (30.5 meters), expand the table to determine the Units required.

The total track length must exceed the desired travel of the Air Outlet Block by approximately 6 ft. on Size AHC34; 6-1/2 ft. on Size AHC68 or AHC100. The space required by the Hose Carrier Frame Assembly and Wire Rope Sheaves prevents the Outlet Block of Size AHC34 from traveling closer than 4-1/2 ft. to the end of the track in which the Carrier Frame operates. It prevents the Outlet Block of Size AHC68 or AHC100 from traveling closer than 5 ft. to the end of the track in which the Carrier Frame operates. The outlet block travel in the opposite direction, for all Sizes, is limited to approximately 1-1/2 ft. from the track end by the angle of the Wire Rope from the Wire Rope Sheave.

The Wheel-Mounted Air Outlet Block, which rides the carrier track, is included with Center Track Unit AHC34-UW1-3/8, AHC34-UW1-1/2, AHC68-UW1-3/4, AHC68-UW1-1 or AHC100-UW1-1 1/4. The Air Outlet Elbow included with Center Track Unit No. AHC34-UE1-3/8, AHC34-UE1-1/2, AHC68-UE1-3/4, AHC68-UE1-1 or AHC100-UE1-1 1/4 must be supported by some type of bracket. For the majority of installations, the No. AHC34-U53, AHC68-U53 or AHC100-U53 Air Outlet Bracket Unit is suitable for mounting the Elbow rigidly on the crane bridge. For those installations where the Elbow must travel on the crane bridge, as when the Travel-Air is used with a trolley-mounted Hoist, a special bracket is required for supporting the Elbow. Since all installations vary in some respect, you must supply any special brackets required.

When ordering a complete Travel-Air Hose Carrier, determine the Units required and order them by the proper Name and Number. If Units for more than one installation are ordered at the same time, state the total track length of each installation, so that the proper length of Air Hose and Wire Rope will be furnished for each installation.

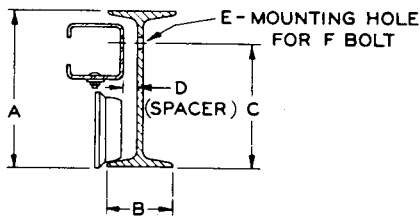
Refer All Communications to the Nearest
Ingersoll-Rand Office or Distributor.

© Ingersoll-Rand Company 1980

Printed in U.S.A.

INGERSOLL-RAND®
PROFESSIONAL TOOLS

Total Length of Track		Quantity of No. AHC34-U2-10, AHC68-U2-10 or AHC100-U2-10 10 ft. Extension Track Units Required	Quantity of No. AHC34-U2-5, AHC68-U2-5 or AHC100-U2-5 5 ft. Extension Track Units Required
Feet	Meters		
20	6.1	1	0
25	7.6	1	1
30	9.1	1	2
35	10.7	2	1
40	12.2	3	0
45	13.7	3	1
50	15.2	3	2
55	16.8	4	1
60	18.3	5	0
65	19.8	5	1
70	21.3	5	2
75	22.9	6	1
80	24.4	7	0
85	25.9	7	1
90	27.4	7	2
95	29.0	8	1
100	30.5	9	0



Minimum I-Beam Size For Mounting Travel-Air
Hose Carrier Serving Trolley-Mounted Hoists

Note: Hand Chain and Motor Trolleys for LC, ML, MR, HLA and HRA Hoists are "Specials"

PLAIN AND HAND CHAIN TROLLEYS FOR AHC34

HOISTS	MINIMUM I-BEAM SIZE						
	DEPTH A	WIDTH B	C MAXIMUM	C MINIMUM	D MINIMUM	E	F
LC ML10, MR10 PLAIN TROLLEY	10	4-5/8	8-1/4	7-1/2	1	13/32	3/8
				6-3/4	1-1/2		
A & B ML20, MR20 PLAIN TROLLEY	10	4-5/8	8-1/4	8-1/4	1		
				7-3/4	1-1/2		
LC A & B ML10, ML20 MR10, MR20 HAND CHAIN TROLLEY	10	4-5/8	8-1/4	8-1/4	1-1/2		

FOR MODELS AHC68 AND AHC100

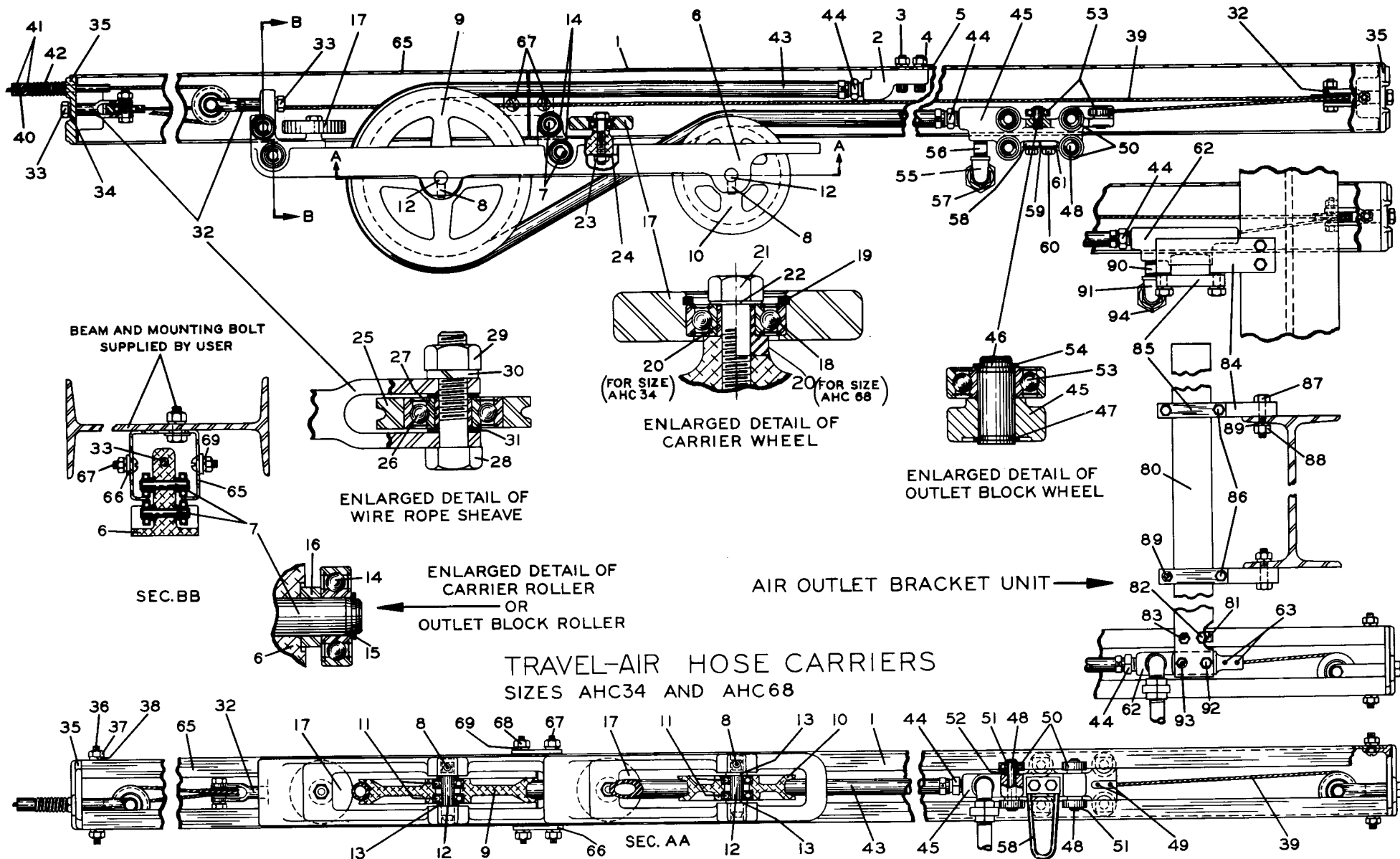
HOISTS	MINIMUM I-BEAM SIZE						
	DEPTH A	WIDTH B	C MAXIMUM	C MINIMUM	D MINIMUM	E	F
A & B HLA20A, HRA20A PLAIN TROLLEY	12	5	9-3/4	9	1	17/32	1/2
LC A & B ML10, ML20 MR10, MR20 HLA20A, HRA20A HAND CHAIN TROLLEY	12	5	9-3/4	9-5/8	1		
C, C620 C6CA, C6H20A HLA30A, HRA30A HLA40A, HRA40A HLA60A, HRA60A	12	5	9-3/4	9-5/8	1		
C640, C6H20A D660, D6H60A	15	5-1/2	12-3/4	11-1/2	1		
D6100 E G (With Tandem Trolley)	15	5-1/2	12-3/4	12-3/4	1		
G (With D20-A471 Trolley)	24	7	21-1/2	18-1/2	1		

MOTOR DRIVEN TROLLEYS FOR MODEL AHC34

LC A & B ML10, ML20 MR10, MR20	12	5	10	10	1	13/32	3/8
---	----	---	----	----	---	-------	-----

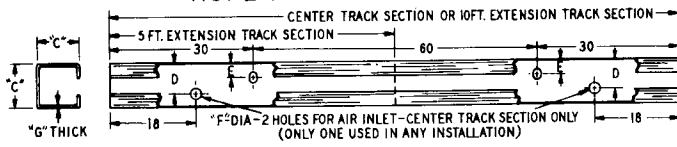
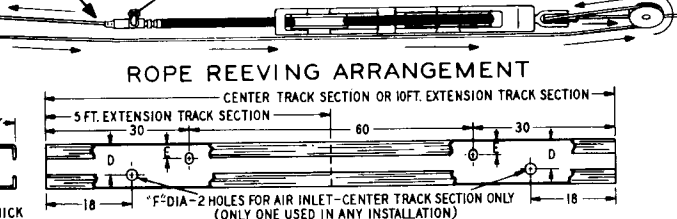
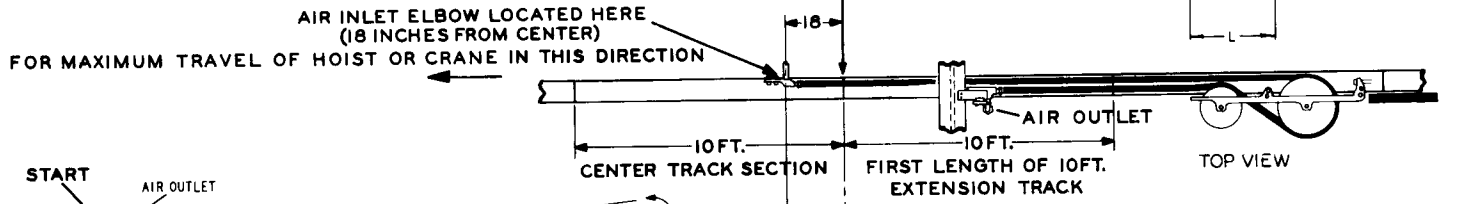
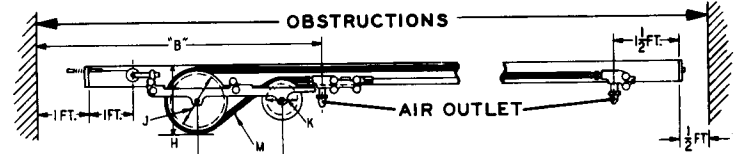
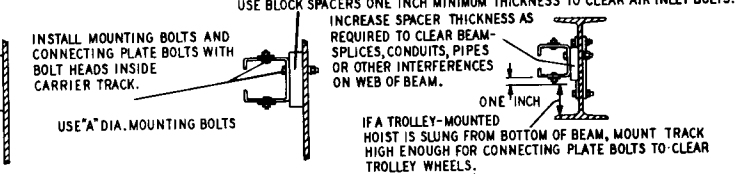
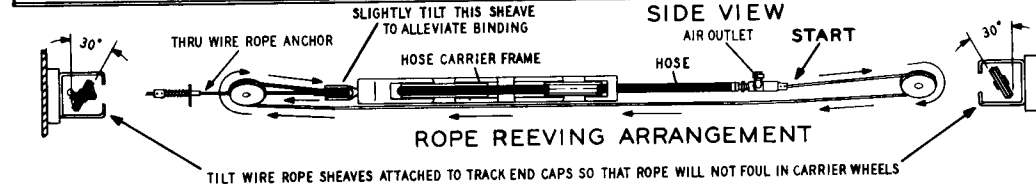
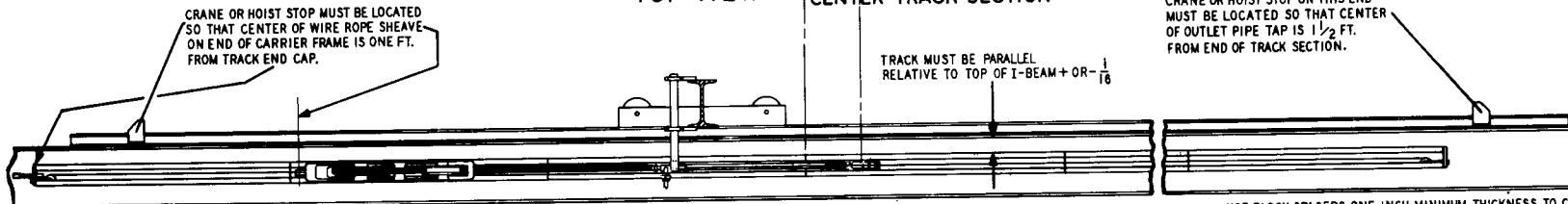
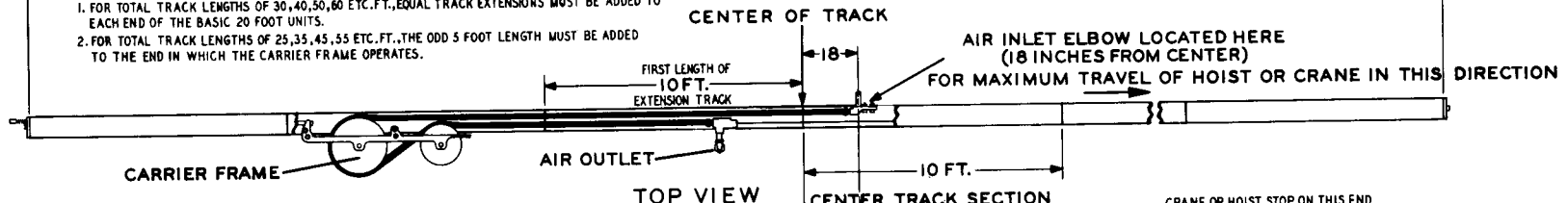
FOR MODELS AHC68 AND AHC100

LC A & B ML10, ML20 MR10, MR20 C, C620 C640, C6CA C6H20A, C6H40A D660, D6H60A HLA20A, HRA20A HLA30A, HRA30A HLA40A, HRA40A HLA60A, HRA60A	12	5	10-1/2	10-1/2	2-3/8	17/32	1/2
	15	5-1/2	12-3/4	11-1/4	1		
D6100 E G (Tandem Trolley)	15	5-1/2	12-3/4	12-1/4	1		
G (ATG Trolley)	24	7	21-1/2	18-1/2	1		

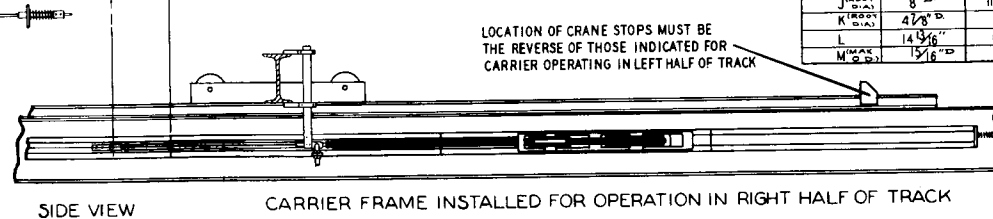


CARRIER FRAME INSTALLED FOR OPERATION IN LEFT HALF OF TRACK

NOTE: THE FOLLOWING APPLIES TO CARRIER FRAME INSTALLED FOR OPERATION IN EITHER LEFT OR RIGHT HALF OF TRACK:
 1. FOR TOTAL TRACK LENGTHS OF 30, 40, 50, 60 ETC. FT., EQUAL TRACK EXTENSIONS MUST BE ADDED TO EACH END OF THE BASIC 20 FOOT UNITS.
 2. FOR TOTAL TRACK LENGTHS OF 25, 35, 45, 55 ETC. FT., THE ODD 5 FOOT LENGTH MUST BE ADDED TO THE END IN WHICH THE CARRIER FRAME OPERATES.



TRACK MOUNTING DIMENSIONS



DIMENSION	SIZE AHC34	SIZE AHC68	SIZE AHC100
A	3/8"	1/2"	1/2"
B	5 1/2 FT.	6 FT.	6 FT.
C	3 1/2"	5"	5"
D	2 1/2"	3 3/8"	3 3/8"
E	1 1/8"	1 3/8"	1 3/8"
F	13/16"	1 3/16"	1 1/16"
G	.105"	.148"	.148"
H	10 1/2"	15 3/8"	15 1/2"
J	8"	11 3/16"	11 3/16"
K	4 1/8"	7 13/16"	7 13/16"
L	14 9/16"	19 1/16"	19 1/16"
M	15 1/16"	1 1/2"	1 3/8"

PART NUMBER FOR ORDERING

PART NUMBER FOR ORDERING

	Center Track Unit		16	Carrier Roller Spacer	AHC34-42
	for Size AHC34 with 3/8" (10 mm) Air Hose			for Size AHC34	AHC68-42
	with Wheel-Mounted Air Outlet Block	AHC34-UW1-3/8	● 17	Carrier Wheel (2)	AHC34-33
	with Air Outlet Elbow for Bracket Mounting	AHC34-UE1-3/8	18	for Size AHC34	AHC68-33
	for Size AHC34 with 1/2" (13 mm) Air Hose			Carrier Wheel Bearing (1 for each Wheel) for Size AHC34	8U-24
	with Wheel-Mounted Air Outlet Block	AHC34-UW1-1/2	19	for Size AHC68 or AHC100	R380-105
	with Air Outlet Elbow for Bracket Mounting	AHC34-UE1-1/2		Carrier Wheel Bearing Retainer (1 for each Bearing) for Size AHC34	W54-118
	for Size AHC68 with 3/4" (19 mm) Air Hose		20	for Size AHC68 or AHC100	S12-118
	with Wheel-Mounted Air Outlet Block	AHC68-UW1-3/4	21	Carrier Wheel Bearing Bushing (2) for Size AHC34	AHC34-12
	with Air Outlet Elbow for Bracket Mounting	AHC68-UE1-3/4		for Size AHC68 or AHC100	AHC68-38
	for Size AHC68 with 1" (25 mm) Air Hose		22	Carrier Wheel Shaft (2) for Size AHC34	DRC-643
	with Wheel-Mounted Air Outlet Block	AHC68-UW1-1		for Size AHC68 or AHC100	21-342
	with Air Outlet Elbow for Bracket Mounting	AHC68-UE1-1	23	Carrier Wheel Shaft Washer (2) for Size AHC34	D02-504
	for Size AHC100 with 1-1/4" (32 mm) Air Hose		24	for Size AHC68 or AHC100	23-725
	with Wheel-Mounted Air Outlet Block	AHC100-UW1-1 1/4		Carrier Wheel Shaft Nut (2) for Size AHC34	D02-418
	with Air Outlet Elbow for Bracket Mounting	AHC100-UE1-1 1/4		for Size AHC68 or AHC100	215-182
1	Track			Wheel Shaft Nut Lock Washer (2) for Size AHC34	D02-321
	for Size AHC34	AHC34-1	● 25	for Size AHC68 or AHC100	D10-322
	for Size AHC68 or AHC100	AHC68-1A		Wire Rope Sheave Assembly (3) for Size AHC34	AHC34-A7A
2	Air Inlet Elbow			for Size AHC68 or AHC100	AHC68-A7A
	for Size AHC34	AHC34-3	26	Wire Rope Sheave (1 for each Assembly) for Size AHC34	AHC34-7A
	for Size AHC68	AHC68-3		for Size AHC68 or AHC100	AHC68-7A
	for Size AHC100	AHC100-3		Rope Sheave Bearing (1 for each Sheave) for Size AHC34	8U-24
3	Inlet Elbow Bolt (2)		27	for Size AHC68 or AHC100	R380-105
	for Size AHC34	844-638		Rope Sheave Bearing Bushing (1 for each Assembly) for Size AHC34	AHC34-12
	for Size AHC68 or AHC100	AHC68-22	28	for Size AHC68 or AHC100	AHC68-12
4	Inlet Elbow Bolt Nut (2)			Rope Sheave Shaft (1 for each Assembly) for Size AHC34	D02-312
	for Size AHC34	D02-418		for Size AHC68 or AHC100	215-37
5	Inlet Elbow Bolt Lock Washer (2)		29	for Size AHC34	D02-418
	for Size AHC34	D02-321		for Size AHC68 or AHC100	215-182
	Hose Carrier Frame Assembly		30	Sheave Shaft Nut (1 for each Shaft) for Size AHC34	
	for Size AHC34	AHC34-A26		for Size AHC34	
	for Size AHC68	AHC68-A26	31	for Size AHC68 or AHC100	
	for Size AHC100	AHC100-A26		Sheave Shaft Lock Washer (1 for each Shaft) for Size AHC34	D02-321
6	Hose Carrier Frame			for Size AHC68 or AHC100	D10-322
	for Size AHC34	AHC34-26	32	Rope Sheave Spacer (2 for each Assembly) for Size AHC34	D02-504
	for Size AHC68 or AHC100	AHC68-26		for Size AHC68 or AHC100	HU-504
7	Carrier Roller Shaft (4)			Rope Sheave Yoke (1 for each Assembly) for Size AHC34	AHC34-8
	for Size AHC34	AHC34-40	33	for Size AHC68 or AHC100	HU-719
	for Size AHC68 or AHC100	AHC68-40		Yoke Cap Screw (1 for each Assembly) for Size AHC34	241-82
8	Hose Sheave Shaft Set Screw (2)		34	for Size AHC68 or AHC100	D10-521
	for Size AHC34	D10-449		Yoke Cap Screw Lock Washer (1 for each Assembly) for Size AHC34	D02-321
	for Size AHC68	C04-31	35	for Size AHC68 or AHC100	D10-322
	for Size AHC100			Track End Cap (2) for Size AHC34	AHC34-5
9	Hose Carrier Sheave			for Size AHC68 or AHC100	AHC68-5
	for Size AHC34	AHC34-27	36	Track End Cap Bolt (4) for Size AHC34	AHC68-19
	for Size AHC68	AHC68-27	37	End Cap Bolt Nut (4) for Size AHC34	D02-428
	for Size AHC100	AHC100-27	38	End Cap Bolt Lock Washer (4) for Size AHC34	T11-58
10	Hose Guide Sheave		● † 39	Wire Rope (specify length; see footnote †) for Size AHC34	AHC68-6
	for Size AHC34	AHC34-28		for Size AHC68 or AHC100	AHC100-6
	for Size AHC68	AHC68-28			
	for Size AHC100	AHC100-28			
● 11	Hose Sheave Bearing (4)				
	for Size AHC34	R380-105			
12	Hose Sheave Shaft (2)				
	for Size AHC34	AHC34-29			
	for Size AHC68 or AHC100	AHC68-29			
13	Hose Sheave Spacer (4)				
	for Size AHC34	FM-570A			
● 14	Carrier Roller (8)				
	for Size AHC34	8U-24			
	for Size AHC68 or AHC100	R380-105			
15	Carrier Roller Retainer (8)				
	for Size AHC34	404-118			
	for Size AHC68 or AHC100	AHC68-41			

† Wire Rope length equals twice the track length plus 3 feet.

● To keep downtime to a minimum, it is desirable to have on hand certain repair parts. We recommend that you stock one (pair or set) of each part indicated by a bullet (●) for every four tools in service.

PART NUMBER FOR ORDERING

PART NUMBER FOR ORDERING

40	Wire Rope Anchor for Size AHC34 for Size AHC68 or AHC100	AHC34-16A AHC68-16A	△ 59	Tool Hanger Retainer for Size AHC34 for Size AHC68 or AHC100	AHC34-91 AHC68-91
41	Rope Set Screw (2) for Size AHC34 for Size AHC68 or AHC100	AHC34-17 AHC68-17	△ 60	Tool Hanger Cap Screw (2) for Size AHC34 for Size AHC68 or AHC100	B8-240 D02-354
42	Rope Anchor Spring for Size AHC34 for Size AHC68 or AHC100	D02-106 207-357	△ 61	Hanger Cap Screw Lock Washer (2) for Size AHC34 for Size AHC68 or AHC100	T11-58 D02-321
★ 43	Air Hose (specify length; see footnote ★) for Size AHC34 3/8" (10 mm) i.d. 1/2" (13 mm) i.d. for Size AHC68 3/4" (19 mm) i.d. 1" (25 mm) i.d. for Size AHC100, 1-1/4" (32 mm) i.d.	AHC34-44 AHC34-43 AHC68-44 AHC68-43 AHC100-43	■ 62	Air Outlet Elbow for Size AHC34 for Size AHC68 for Size AHC100	AHC34-4A AHC68-4A AHC100-4A
44	Male Hose Nipple (2) for Size AHC34 3/8" hose to 3/8" male pipe. 1/2" hose to 3/8" male pipe. for Size AHC68 3/4" hose to 3/4" male pipe. 1" hose to 3/4" male pipe. for Size AHC100, 1-1/4" hose to 1" male pipe.	RV1-46 A01-46 J3-581 R5H-46 AHC100-46	■ 63	Rope Set Screw (2) for Size AHC34 for Size AHC68 or AHC100	AHC34-17 AHC68-17
	Air Outlet Block Assembly for Size AHC34 for Size AHC68 for Size AHC100	AHC34-A80A AHC68-A80A AHC100-A80A	65	Extension Track Unit for Size AHC34 5 foot length. 10 foot length. for Size AHC68 5 foot length. 10 foot length. for Size AHC100 5 foot length. 10 foot length.	AHC34-U2-5 AHC34-U2-10 AHC68-U2-5 AHC68-U2-10 AHC100-U2-5 AHC100-U2-10
△ 45	Air Outlet Block for Size AHC34 for Size AHC68 for Size AHC100	AHC34-80A AHC68-80A AHC100-80A	66	Track for Size AHC34 5 foot length. 10 foot length. for Size AHC68 or AHC100 5 foot length. 10 foot length.	AHC34-2-5 AHC34-1 AHC68-2-5 AHC63-1A AHC68-25 AHC68-19 D02-428 T11-58
△ 46	Outlet Block Wheel Shaft (4) for Size AHC34 for Size AHC68 or AHC100	AHC34-86 AHC68-86	67 68 69	Track Connecting Plate (2) Connecting Plate Bolt (4) Connecting Plate Bolt Nut (4) Connecting Plate Bolt Lock Washer (4)	AIR OUTLET BRACKET PARTS
△ 47	Outlet Block Wheel Shaft Retainer (1 for each Shaft) for Size AHC34 for Size AHC68 or AHC100	404-118 AHC68-41	■ 80 ■ 81 ■ 82 ■ 83 ■ 84 ■ 85 ■ 86 ■ 87 ■ 88 ■ 89 ■ 90	Air Outlet Bracket Unit for Size AHC34 for Size AHC68 for Size AHC100	AHC34-U53 AHC68-U53 AHC100-U53 AHC68-53 AHC68-54 R3H-68A L01-67 AHC68-57 AHC68-58 D02-312 D10-312 D02-418 D02-321
△ 48	Outlet Block Roller Shaft (4) for Size AHC34 for Size AHC68 or AHC100	AHC34-40 AHC68-40	■ 91	Air Outlet Bracket Outlet Bracket Shoe Bracket Shoe Cap Screw (2) Bracket Shoe Cap Screw Lock Washer (2) Outlet Bracket Clamp (2) Bracket Clamp Plate (2) Clamp Plate Cap Screw (4) Clamp Mounting Bolt (4) Clamp Mounting Bolt Nut (4) 3/8" Lock Washer (8)	AAM-287 C04-286 C10-286 D01-581 DU-581 DU-587 D10-312A D02-321
△ 49	Rope Set Screw (2) for Size AHC34 for Size AHC68 or AHC100	AHC34-17 AHC68-17	■ 92 ■ 93 ■ 94	Outlet Elbow Cap Screw (2) 3/8" Lock Washer (2) Outlet Elbow Pipe Union for Size AHC34 for Size AHC68 for Size AHC100	AAM-282 C04-282 D10-282
△ 50	Air Outlet Block Roller (8) for Size AHC34 for Size AHC68 or AHC100	8U-24 R380-105			
△ 51	Air Outlet Block Roller Retainer (8) for Size AHC34 for Size AHC68 or AHC100	404-118 AHC68-41			
△ 52	Air Outlet Block Roller Spacer (8) for Size AHC34 for Size AHC68 or AHC100	AHC34-42 AHC68-42			
● △ 53	Air Outlet Block Wheel (4) for Size AHC34 for Size AHC68 or AHC100	8U-24 R380-105			
△ 54	Air Outlet Block Wheel Retainer (1 for each Wheel) for Size AHC34 for Size AHC68 or AHC100	404-118 AHC68-41			
△ 55	Air Outlet Block Street Ell for Size AHC34 for Size AHC68 for Size AHC100	D01-581 DU-581 DU-587			
△ 56	Air Outlet Block Nipple for Size AHC34 for Size AHC68 for Size AHC100	AAM-287 D02-987 C10-286			
△ 57	Air Outlet Block Union for Size AHC34 for Size AHC68 for Size AHC100	AAM-282 C04-282 C10-282			
△ 58	Tool Hanger for Size AHC34 for Size AHC68 or AHC100	AHC34-89 AHC68-89			

● To keep downtime to a minimum, it is desirable to have on hand certain repair parts. We recommend that you stock one (pair or set) of each part indicated by a bullet (●) for every four tools in service.

★ Air Hose Lengths: When total track footage ends in 0, such as 20, 30, 40, etc. the Air Hose length equals one-half the total track length, plus 3 feet for Size AHC34; 4 feet for Size AHC68 and AHC100.

When total track footage ends in 5, such as 25, 35, 45, etc., the Air Hose length equals one-half the total track length, plus 5-1/2 feet for Size AHC34; 6-1/2 feet for Size AHC68 and AHC100.

△ Illustrated parts 45 through 61 used only on Unit equipped with Wheel-Mounted Air Outlet Block.

■ Illustrated parts-62, 63 and 80 through 94 used only on Unit equipped with Air Outlet Elbow for Bracket Mounting.

INGERSOLL-RAND

● **Atlanta, Ga.**
111 Ingersoll-Rand Drive
Chamblee, Georgia 30341

● **Chicago, Ill.**
888 Industrial Drive
Elmhurst, Illinois 60126

* **Baton Rouge, La.** 70816
4252 Rhoda Drive

● **Dallas, Texas** 75247
8901 Directors Row

* **Boston, Mass.**
2 Kunkholm Dr.
Holliston, Mass. 01746

* **Denver, Colo.** 80207
5805 E. 39th Ave.

* **Charlotte, N. C.** 28208
4840 Wilmont Rd.

● **Detroit, Mich.**
22122 Telegraph Road
Southfield, Mich. 48075

* **Chattanooga, Tenn.** 37408
1936 Central Ave.

● **Houston, Texas** 77001
6800 Sands Point, P.O. 1455

● *Regional Sales Office and All-Star Servicenter.*
* *All-Star Servicenter only.*

Power Tool Division
28 Kennedy Blvd.
East Brunswick, N. J. 08816
● **Los Angeles, Calif.** 90022
5533 East Olympic Blvd.
* **Milwaukee, Wis.**
N84 W13540 Leon Rd.
Menomonee Falls, Wis.
53051
* **Minneapolis, Minn.** 55404
Corner Franklin & Cedar

* **Newark, N. J.**
28 Kennedy Blvd.
East Brunswick, N. J. 08816

● **New Orleans, La.** 70005
939 Lake Ave. Metairie

* **Norfolk, Va.**
1431C Air Rail Ave.
Virginia Beach, Va. 23455

● **Philadelphia, Pa.**
651 Park Ave.
King of Prussia, Pa. 19406

● **Pittsburgh, Pa.** 15220
6 Parkway Ctr.

* **Portland, Oregon** 97214
240 S. E. Clay St.

* **Salt Lake City, Utah** 84115
3007 South West Temple
Suite G

* **San Francisco, Calif.**
14299 Wicks Blvd.
San Leandro, Calif. 94577

* **Seattle, Wash.** 98188
345 Andover Park East

* **Shreveport, La.** 71106
454 W. 61st St.

* **Syracuse, N. Y.** 13208
505 Factory Ave.

● **St. Louis, Mo.** 63132
1515 Page Industrial Blvd.

● **Washington, D. C.** 20006
1666 K St., N. W.

CANADA

● **Calgary, Alberta**, T2R 0E1
611 11th Ave., S. W.

● **Sherbrooke, Quebec**
375 Courcellette St., J1H 3X4
Box 1500, J1H 5M3

● **Montreal, Quebec**
620 Cathcart St., H3B 1M2
P.O. Box 1148, H3B 3K9

● **Sudbury, Ontario**, P3A 3T3
P.O. Box 2220

Ingersoll-Rand Canada Inc.
Montreal, Quebec, H3B 1S6
630 Dorchester Blvd West

● **Toronto**
Don Mills, Ontario M3B 2V1
255 Lesmill Road

● **Vancouver**
British Columbia, V6A 2W7
1695 Main St.
● **Winnipeg, Manitoba**, R3H 0M6
1234 Border St.

● *All-Star Servicenter.*

AUTONOMOUS COMPANIES

Argentina, Buenos Aires
Ingersoll-Rand Argentina
S.A. y C.
Casilla Correo 2412, Correo Central

Australia, South Melbourne
Ingersoll-Rand (Australia) Ltd.
P.O. Box 219
42 Moray Street, 3205 Victoria

Austria A 1120, Vienna
Ingersoll-Rand Ges M.B.H.
Schoenbrunnerstrasse 213-215/2/5

Belgium, Diegem (Brussels)
Ingersoll-Rand Benelux S.A.
Kouterveldstraat 10-12, 1920 Diegem

Brazil, Sao Bernardo
Ingersoll-Rand S.A. Ind. e Com.
Caixa Postal 911

Chile, Santiago
Ingersoll-Rand Chile
Morande 341
Casilla 126-D

Colombia, Bogota
Macquinarias Ingersoll-Rand
de Colombia, S.A.
Apartado Aero 7451

Denmark, Albertslund DK2620
Ingersoll-Rand AB
Herstedvang 11

Egypt, Cairo
Ingersoll-Rand North East Africa
P.O. Box 820
23A Ismail Mohamed St.
Zamalek

England, London, SW1X, 7LU
Ingersoll-Rand Co., Ltd.
Bowater House, Knightsbridge

France, 78 190 Trappes Yvelines
Compagnie Ingersoll-Rand
Avenue Albert Einstein
Zone Industrielle

Germany, 403 Ratingen
Ingersoll-Rand GmbH
Robt. Zapp Str. 7
Postfach 1380

Greece, Athens 610
Ingersoll-Rand Central Middle East
17th Floor Athens Tower
Mesogion 2-4

Hong Kong
Ingersoll-Rand Far East
19th Floor, Lap Heng House
50, Gloucester Road

India, Bombay 400018
Ingersoll-Rand (India) Private Ltd.
44 Maulana Abdul Gaffar Rd.
P.O. Box 16564, Worli

Ireland, Dublin
Ingersoll-Rand Company (Ireland) Ltd.
John F. Kennedy Drive
Bluebell

Italy, 20100 Milano
Ingersoll-Rand Italiana, S.p.A.
Strada Provinciale Cassanese
Caselle Postale 1232
Vignate, Italy

Japan, 106 Tokyo
Ingersoll-Rand (Japan) Ltd.
Kowa Bldg. No. 17
2-7 Nishi-Azabu 1-Chome
Minato-Ku

Kenya, Nairobi
Ingersoll-Rand Mid Africa
P.O. Box 14240

Malaysia, Petaling Jaya
Ingersoll-Rand Malaysia, Sdn. Bhd.
P.O. Box No. 125

Mexico, 10 D.F. Mexico
Ingersoll-Rand S.A. de C.V.
Apartado 41-666

Netherlands, Zoeterwoude
Ingersoll-Rand Benelux N.V.
P.O. Box 33, Zoeterwoude

Norway, Oslo 1
Ingersoll-Rand AB
P.O. Box 143-Sentrum

Peru, Lima
Ingersoll-Rand Co. of Peru, S.A.
Casilla 2261

Philippines, Makati, Rizal 3117
Ingersoll-Rand Philippines, Inc.
P.O. Box 445 MCC

Portugal, Lisbon 5
Ingersoll-Rand Lda.
Apartado 2933

Puerto Rico, San Juan 00936
Ingersoll-Rand de Puerto Rico Inc.
G.P.O. Box 1222

Singapore 22
Ingersoll-Rand Southeast Asia (Pte.) Ltd.
G.P.O. Box 2062, Singapore 1

South Africa, Alberton
Ingersoll-Rand Co. S.A. (Proprietary) Ltd.
P.O. Box 3720
Alrode, 1451

Spain, Madrid
Cia. Ingersoll-Rand, S.A.
Apartado 518

Sweden, Bromma
Ingersoll-Rand A.B.
Fack
S-16125 Bromma 1

Venezuela, Caracas
Ingersoll-Rand de Venezuela S.A.
Apartado 70588, Los Ruices

Distributors in principal cities throughout the world. Contact the nearest Ingersoll-Rand office for the name and address of the distributor in your country or write to Ingersoll-Rand International, Woodcliff Lake, New Jersey.

AUTHORIZED I-R SALES AND SERVICE