

CHARACTERISTICS:

Nominal line pull (lifting): 70 KN

Working pressure: 160 bars Calibration pressure: 185 bars

Max. Hoisting speed: 6 m/mn Max. Oil flow: 41 l/mn

Chain: Type: 13x36 Breaking load: 212 kN Safety factor: 6,05

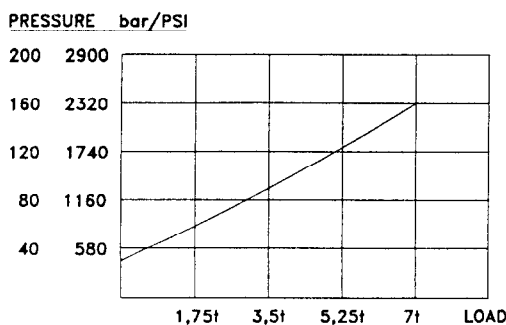
-The chain must be lubricate regularly with:
SAE 80 or SAE 90 gear oil.

-For intensive work with heavy loads and/or fast speed
we recommand to use a case hardened chain.

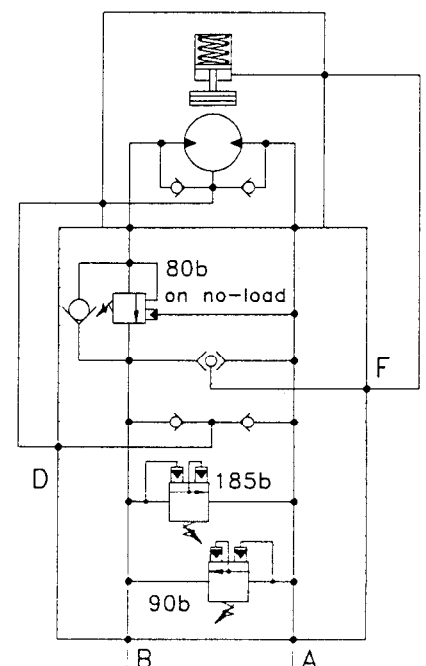
Weight (with standard lift): 93 kg

Weight of 1 metre of extra chain: 3,85 kg (8,5 lbs)

PERFORMANCE CURVES:



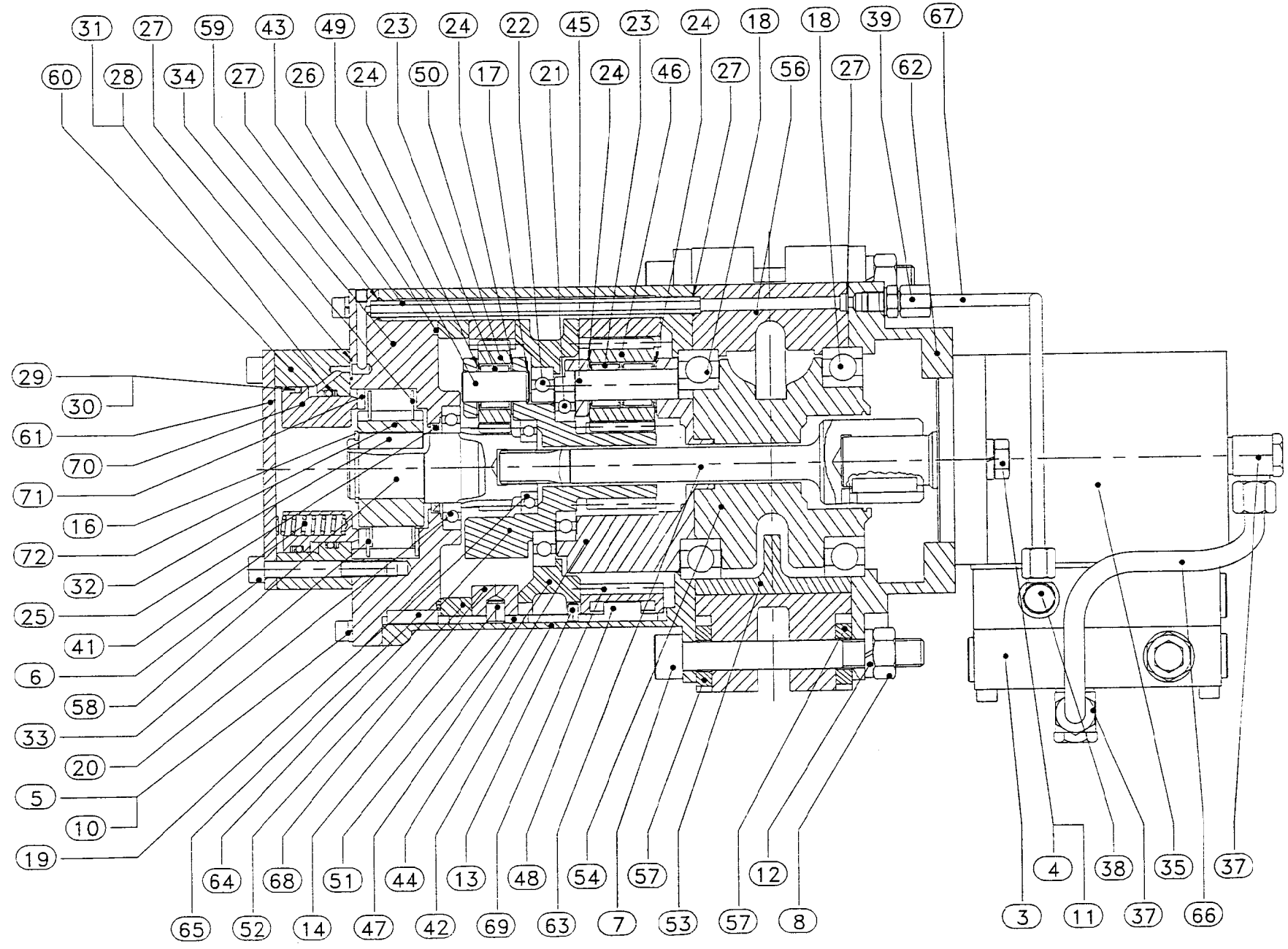
HYDRAULIC SCHEME



SAMI
 B.P. 59
 59450 SIN LE NOBLE FRANCE
 TEL. (33) 27.93.08.08
 TELEX 820 221
 TELEFAX (33) 27.93.08.00

LIFTCHAIN
 7N7000 SERIES
 PLAN D'ENSEMBLE

NUMERO DE NOMENCLATURE
L 527
NUMERO DU DOCUMENT
95/02/20 A 1 / 3
<i>L. Quenon</i>
LE CHEF DU BUREAU D'ETUDES



IR/SAMI A

BP 59

59500 SIN LE NOBLE

TEL: (33) 27.93.08.08

FAX: (33) 27.93.08.00

TELEX: 820 221

LIFTCHAIN

7N7000 SERIES

PLAN D'ENSEMBLE

NUMERO DE NOMENCLATURE

L 527

NUMERO DU DOCUMENT

95/02/20 A 2/3*Ph. Demasso*

Le chef du bureau d'études

REPERE	DESIGNATION	DESCRIPTION	QTE	CODE
ITEM			QTY	
1	SUSPENSION 7T	SUSPENSION	1	34124602
2	MOUFLE 7T	HOOK	1	35270071
3	BLOC DE REGULATION		1	35980036
4	VIS HM12x35	SCREW	2	41015401
5	VIS CHC M6x25	SCREW	7	41301006
6	VIS CHC M8x60	SCREW	6	41302206
7	VIS CHC M14x120	SCREW	3	41308606
8	ECROU HU M14	NUT	3	43000911
9	RIVET		4	44600821
10	RONDELLE ELASTIQUE @6	WASHER	7	45200006
11	RONDELLE ELASTIQUE @12	WASHER	2	45200012
12	RONDELLE ELASTIQUE @14	WASHER	3	45200014
13	GOUPILLE CANNELEE @5x10	WASHER	1	46404218
14	GOUPILLE CANNELEE @9x16	WASHER	1	46406018
15	GOUPILLE ELASTIQUE @14/60	WASHER	1	46502920
16	CIRCLIPS E30	CIRCLIPS	1	47700030
17	CIRCLIPS @15	CIRCLIPS	2	47800339
18	ROULT. A BILLES 6015-2RS	BALL BEARING	2	50050015
19	ROULT. A BILLES 16005	BALL BEARING	1	50800005
20	ROULT. A BILLES 16007	BALL BEARING	1	50800007
21	ROULT. A BILLES 16009	BALL BEARING	1	50800009
22	ROULT. A BILLES 16013	BALL BEARING	1	50800013
23	ROULT. A AIGUILLES		8	56472316
24	CONTRE PLAQUE		10	57308632
25	BAGUE D'ETANCHEITE A LEVRES	SEALING RING	1	58020430
26	JOINT TORIQUE @134.5x3	O' RING	1	58211229
27	JOINT TORIQUE @7.5x1.5	O' RING	4	58226829
28	JOINT TORIQUE	O' RING	1	58231329
29	JOINT TORIQUE	O' RING	1	58231429
30	BAGUE ANTI- EXTRUSION @83		1	58231529
31	BAGUE ANTI- EXTRUSION @73		1	58231629
32	CLAVETTE		1	60204924
33	DISQUE DE FRICTION		9	63092332
34	DISQUE ACIER		8	63092432
35	MOTEUR HYDRAULIQUE		1	64000101
36	PLAQUE D'IDENTIFICATION		1	66709741
37	RACCORD ORIENTABLE		2	68119928
38	RACCORD ORIENTABLE		1	68169332
39	UNION M10x100		1	68209128
40	CHAINE 13x36		6.97M	69054232
41	RESSORT DE COMPRESSION		12	69192232
42	CARTER REDUCTEUR		1	94120003
43	TUBE 6/8		1	94120039
44	PORTE SATELLITE		1	94120041
45	AXE DE SATELLITE		3	94120042
46	SATELLITE		3	94120043

IR/SAMIA

BP 59

59500 SIN LE NOBLE

TEL: (33) 27.93.08.08

FAX: (33) 27.93.08.00

TELEX: 820 221

LIFTCHAIN
7N7000 SERIES
PLAN D'ENSEMBLE

NUMERO DE NOMENCLATURE

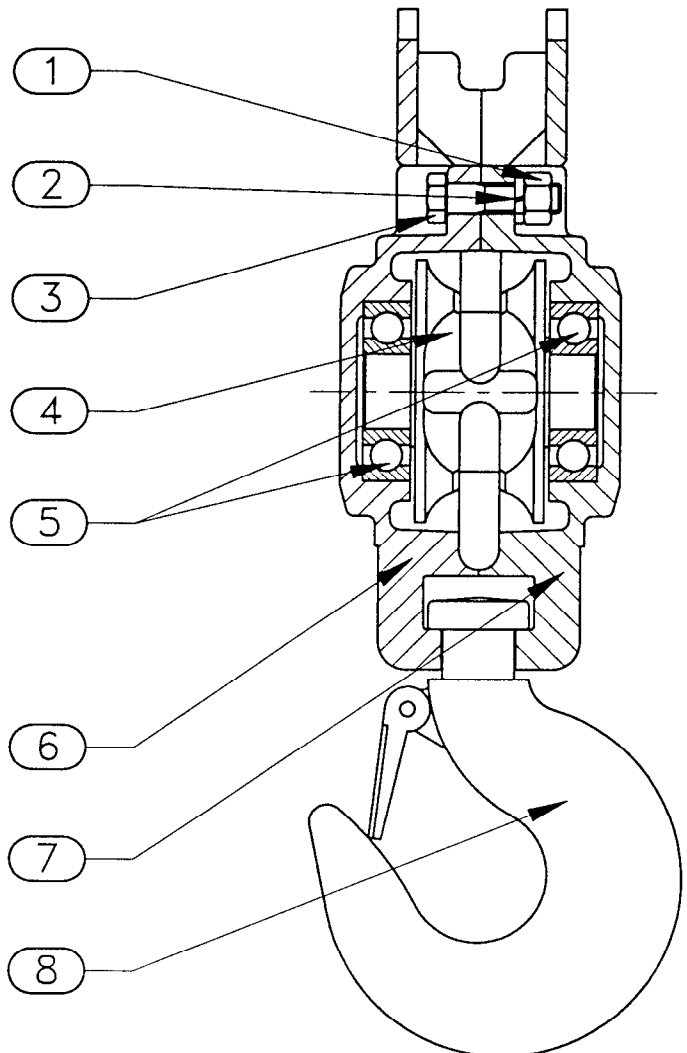
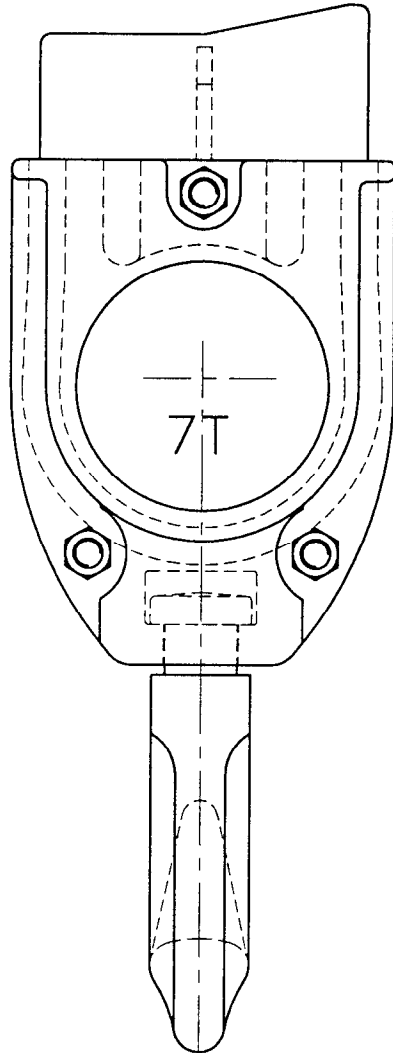
L 527

NUMERO DU DOCUMENT

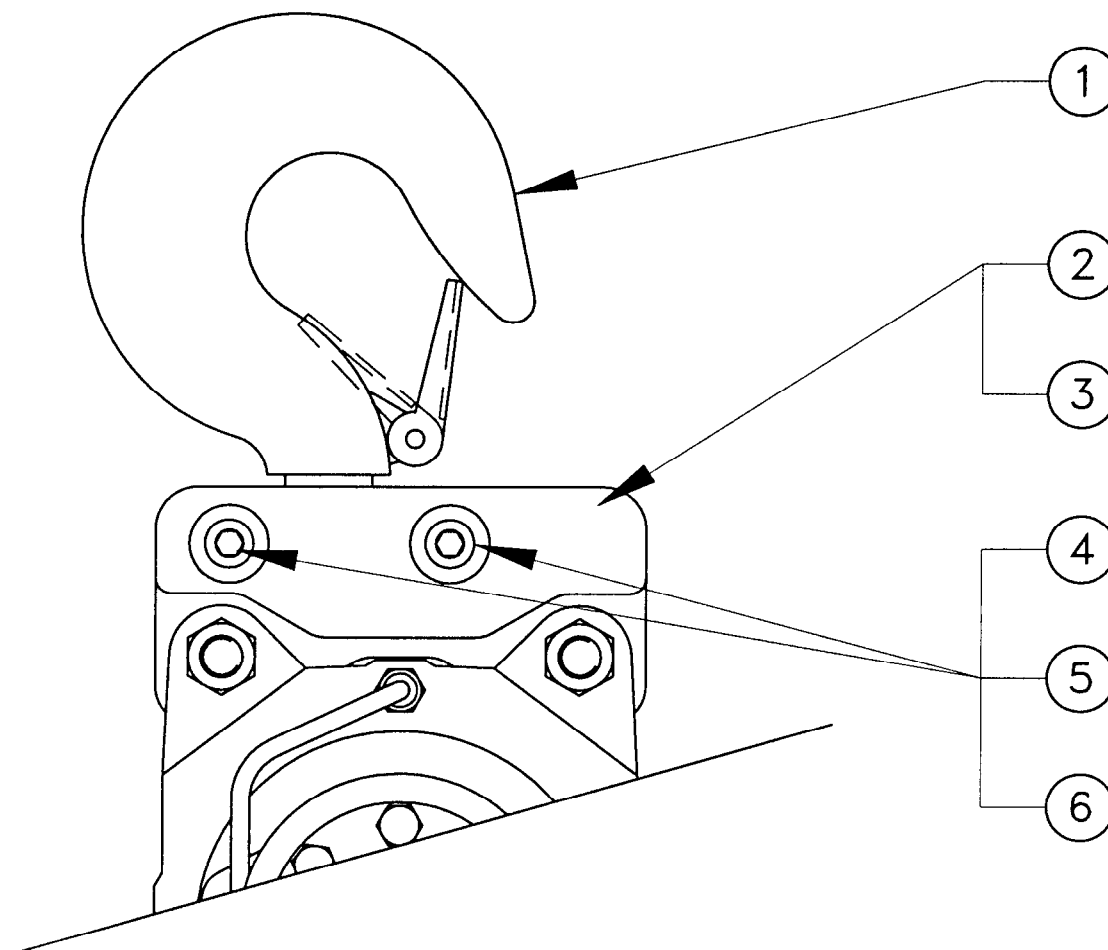
95102120 A 3/3*Ph. Demersé*

Le chef du bureau d'études

47	BAGUE SUPPORT ROULT.		1	94120045
48	CLAVETTE 14/9		1	94120046
49	AXE DE SATELLITE		2	94120047
50	SATELLITE		2	94120048
51	CLAVETTE 14/9		1	94120060
52	BAGUE ENTRETOISE		1	94120061
53	GUIDE CHAINE		1	94120072
54	NOIX DE CHAINE		1	94120112
55	BUTEE D'EXTREMITÉ DE CHAINE		1	94120150
56	CARTER GUIDE CHAINE		1	94120197
57	RONDELLE ENTRETOISE		2	94120216
58	SOLAIRE 1er ETAGE		1	95270108
59	COUVERCLE REDUCTEUR		1	95270109
60	CORPS DE FREIN		1	95270110
61	COUVERCLE DE FREIN		1	95270111
62	FLASQUE BRIDE		1	95270112
63	ARBRE MOTEUR		1	95270113
64	PORTE SATELLITE		1	95270114
65	CLAVETTE		1	95270115
66	TUBE DE DRAINAGE		1	95270116
67	TUBE DE FREIN		1	95270117
68	COURONNE		1	95270118
69	COURONNE		1	95270119
70	PISTON		1	96110010
71	BAGUE		1	96110012
72	MANCHON DE LIAISON		1	96220014
73				
74				



REPÈRE ITEM	DESIGNATION	DESCRIPTION	QUANTITE QUANTITY	CODE
1	Ecrou Hu M12	Nut Hu M12	3	43000311
2	Rondelle Grower W12	Split wascher W12	3	45200012
3	Vis HM12x45	Screw HM12x45	3	41015701
4	Noix de chaine	Chain sprocket wheel	1	94120113
5	Roult. à billes 6306-2RS	Ball bearing 6306-2RS	2	50250006
6	Flasque de moufle	Bottom block flange	1	95270121
7	Flasque de moufle	Bottom block flange	1	95270122
8	Crochet 7T	7T Hook	1	95270058



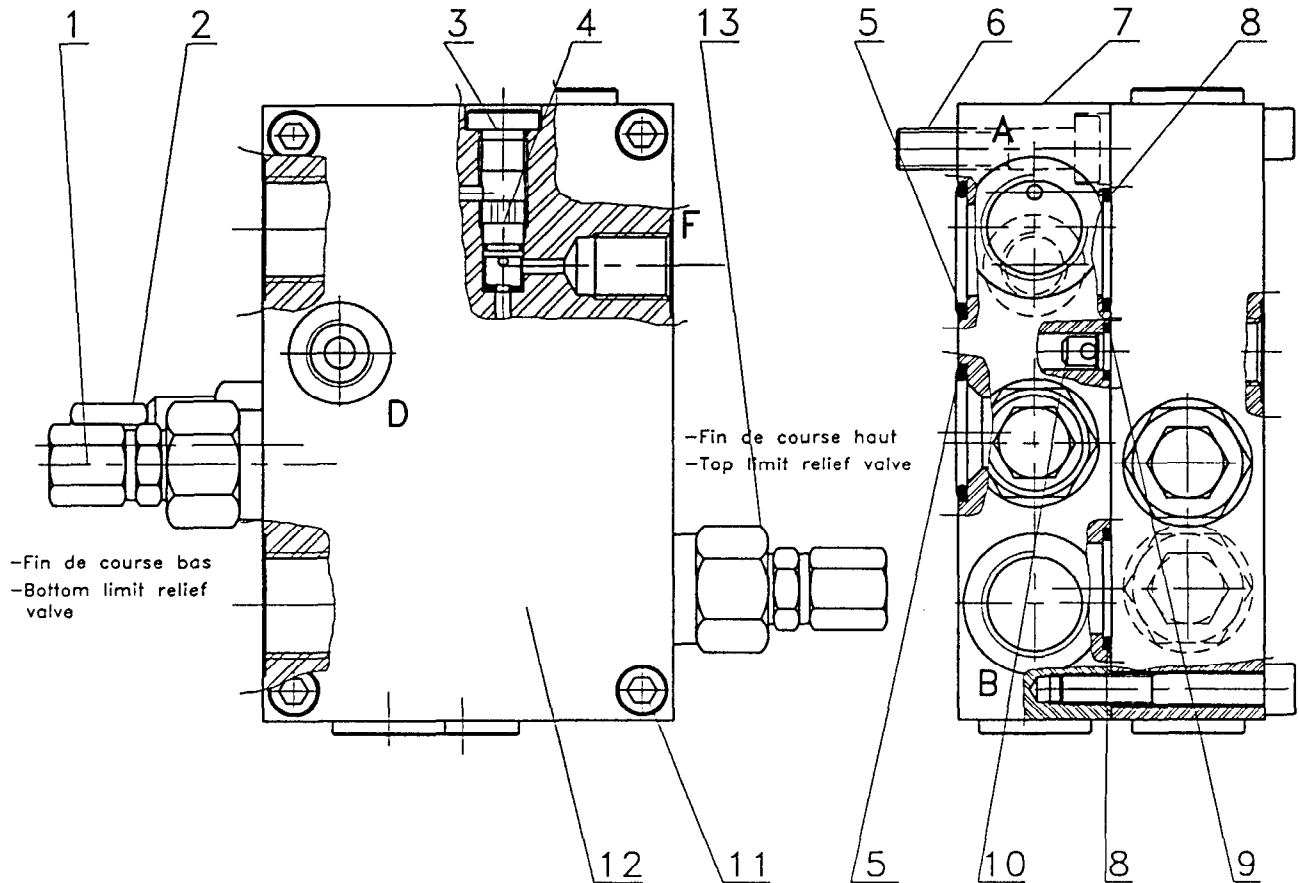
REPÈRE ITEM	DESIGNATION	DESCRIPTION	QUANTITE QUANTITY	CODE
1	Crochet	hook	1	9.412.0124
2	1/2 support	1/2 support	1	9.412.0199
3	1/2 support	1/2 support	1	9.412.0200
4	Vis CHc	Screw	2	4.130.8306
5	Ecrou Hu 10	Nut	2	4.300.0211
6	Rondelle Grower W10	Split washer	2	4.520.0010

BLOC

HYDRAULIQUE de

REGULATION

Flasqué sur palan

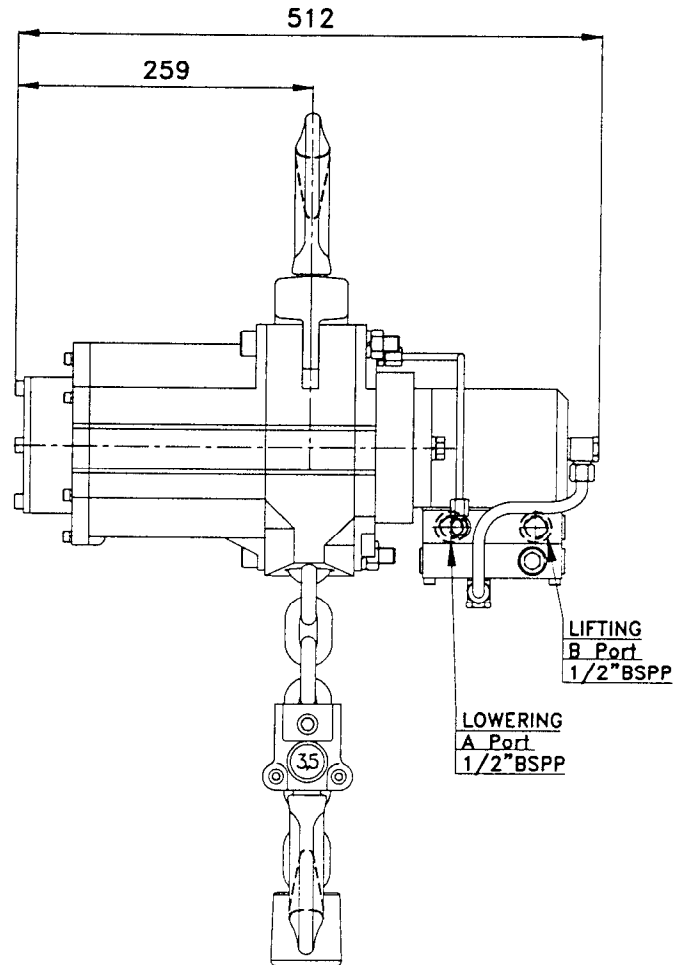
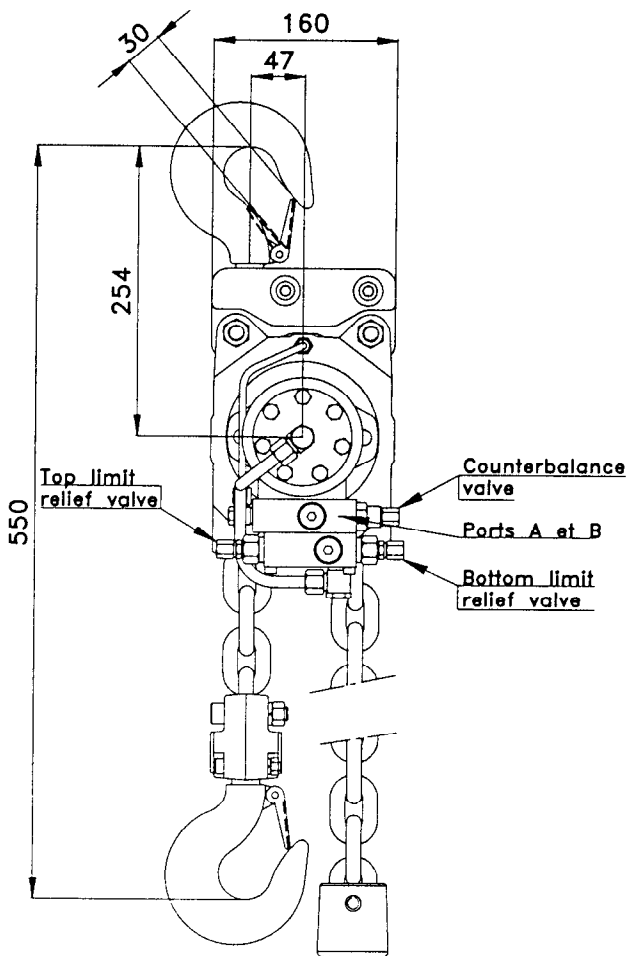


Rép:3 Collé au LOCTITE 243

Rép:6 Collé au LOCTITE 243

Rép:11 Collé au LOCTITE 243

ITEM N°	DESIGNATION	DESCRIPTION	BEZEICHNUNG	QTY	CODE
1	Fin de course bas	Bottom limit relief valve		1	68416941
2	Valve d'équilibrage	Counterbalance valve		1	68463432
3	Bouchon	Plug		1	65110441
4	Sélecteur de circuit	Shuttle valve		1	68402441
5	Joint torique	O'ring		2	58216329
6	Vis CHc M8x35	Screw M8x35		4	41529006
7	Bloc régulation	Regulating block		1	95980067
8	Joint torique	O'ring		2	58214729
9	Joint torique	O'ring		2	58233429
10	Clapet anti retour	Check valve		2	68417041
11	Vis CHc M6x40	Screw M6x40		4	41314906
12	Bloc fin de course	Top and bottom limit block		1	95980068
13	Fin de course haut	Top limit relief valve		1	68416941

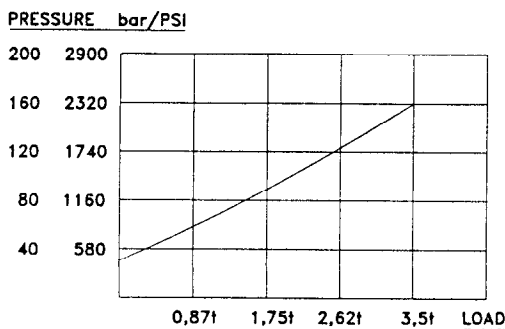


CHARACTERISTICS:

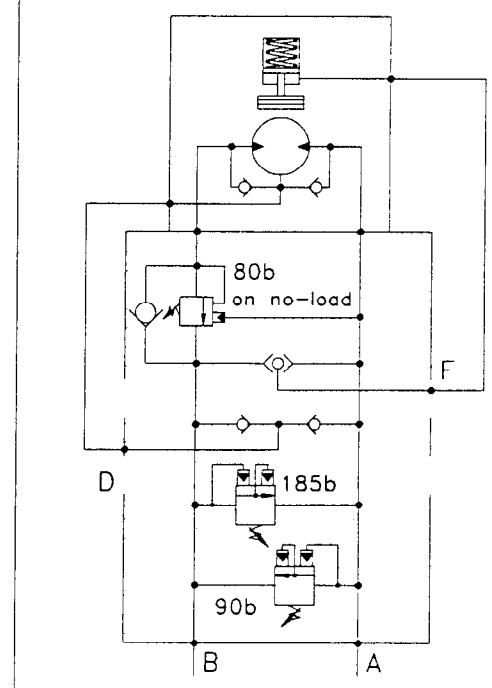
- Nominal line pull (lifting): 35 KN
- Working pressure: 160 bars Calibration pressure: 185 bars
- Max. Hoisting speed: 12 m/mn Max. Oil flow: 41 l/mn
- Chain: Type: 13x36 Breaking load: 212 kN Safety factor: 6,05
- Standard height of lift: 3 m
- The chain must be lubricate regularly with: SAE 80 or SAE 90 gear oil.
- For intensive work with heavy loads and/or fast speed we recommand to use a case hardened chain.

Weight (with standard lift): 69 kg
 Weight of 1 metre of extra chain: 3,85 kg (8,5 lbs)

PERFORMANCE CURVES:



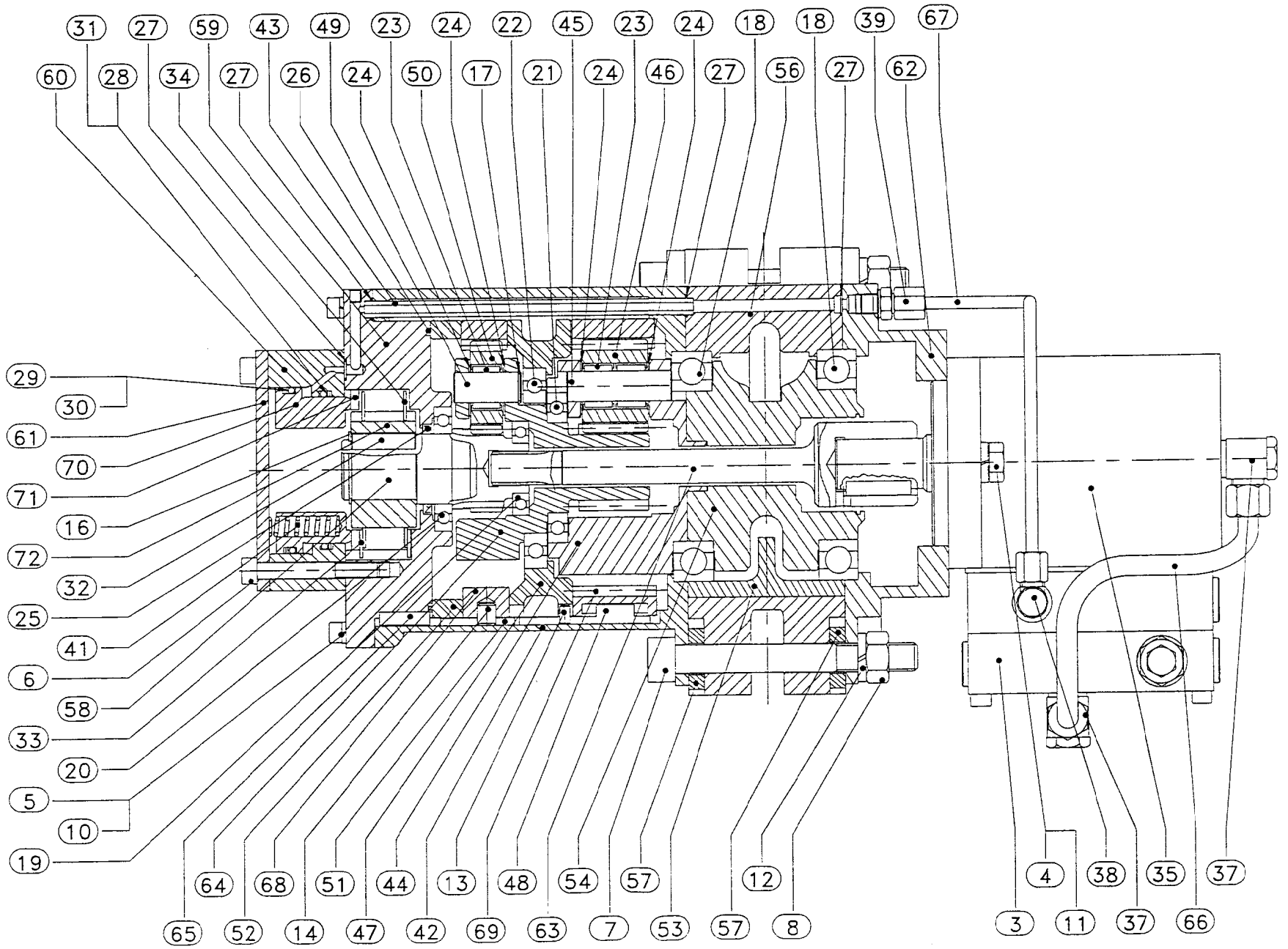
HYDRAULIC SCHEME



The equipment described on this sheet is subject to the general sales and warranty conditions of Ingersoll-Rand. Because of the constant evolution of the constant evolution of technology, Ingersoll-Rand reserves the right to modify without notice the right to modify without notice the specification of any equipment or accessory.

LIFTCHAIN 7N3500 SERIES PLAN D'ENSEMBLE

NUMERO DE NOMENCLATURE
L 527
NUMERO DU DOCUMENT
95/02/26 A 1 / 3
<i>L. Quenec</i>
LE CHEF DU BUREAU D'ETUDES



IR/SAMI A

BP 59
 59500 SIN LE NOBLE
 TEL: (33) 27.93.08.08
 FAX: (33) 27.93.08.00
 TELEX: 820 221

LIFTCHAIN
7N3500 SERIES
PLAN D'ENSEMBLE

NUMERO DE NOMENCLATURE

L 527

NUMERO DU DOCUMENT

95/02/26 A 2/3*Ph. Demarese*

Le chef du bureau d'études

REPERE	DESIGNATION	QUANTITE	CODE
1	SUSPENSION 3,5T	1	35270072
2	CROCHET 3,5T	1	35274414
3	BLOC DE REGULATION	1	35980036
4	VIS HM M12x35	2	41015401
5	VIS CHC M6x25	7	41301006
6	VIS CHC M8x60	6	41302206
7	VIS CHC M14x120	3	41308606
8	ECROU HU M14	3	43000911
9	RIVET	4	44600821
10	RONDELLE ELASTIQUE @6	7	45200006
11	RONDELLE ELASTIQUE @12	2	45200012
12	RONDELLE ELASTIQUE @14	3	45200014
13	GOUPILLE CANNELEE @5x10	1	46404218
14	GOUPILLE CANNELEE @9x16	1	46406018
15	GOUPILLE ELASTIQUE @14/60	1	46502920
16	CIRCLIPS E30	1	47700030
17	CIRCLIPS @15	2	47800339
18	ROULT. A BILLES 6015-2RS	2	50050015
19	ROULT. A BILLES 16005	1	50800005
20	ROULT. A BILLES 16007	1	50800007
21	ROULT. A BILLES 16009	1	50800009
22	ROULT. A BILLES 16013	1	50800013
23	ROULT. A AIGUILLES	8	56472316
24	CONTRE PLAQUE	10	57308632
25	BAGUE D'ETANCHEITE A LEVRES	1	58020430
26	JOINT TORIQUE @134.5x3	1	58211229
27	JOINT TORIQUE @7.5x1.5	4	58226829
28	JOINT TORIQUE	1	58231329
29	JOINT TORIQUE	1	58231429
30	BAGUE ANTI- EXTRUSION @83	1	58231529
31	BAGUE ANTI- EXTRUSION @73	1	58231629
32	CLAVETTE	1	60204924
33	DISQUE DE FRICTION	9	63092332
34	DISQUE ACIER	8	63092432
35	MOTEUR HYDRAULIQUE	1	64000101
36	PLAQUE D'IDENTIFICATION	1	66709741

IR/SAMIIA

BP 59
 59500 SIN LE NOBLE
 TEL: (33) 27.93.08.08
 FAX: (33) 27.93.08.00
 TELEX: 820 221

LIFTCHAIN
7N3500 SERIES
PLAN D'ENSEMBLE

NUMERO DE NOMENCLATURE

L 527

NUMERO DU DOCUMENT

95/02/26 A 3/3*Ph. Demasse*

Le chef du bureau d'études

37	RACCORD ORIENTABLE	2	68119928
38	RACCORD ORIENTABLE	1	68169332
39	UNION M10x100	1	68209128
40	CHAINE 13x36	3,59m	69054232
41	RESSORT DE COMPRESSION	12	69192232
42	CARTER REDUCTEUR	1	94120003
43	TUBE 6/8	1	94120039
44	PORTE SATELLITE	1	94120041
45	AXE DE SATELLITE	3	94120042
46	SATELLITE	3	94120043
47	BAGUE SUPPORT ROULT.	1	94120045
48	CLAVETTE 14/9	1	94120046
49	AXE DE SATELLITE	2	94120047
50	SATELLITE	2	94120048
51	CLAVETTE 14/9	1	94120060
52	BAGUE ENTRETOISE	1	94120061
53	GUIDE CHAINE	1	94120072
54	NOIX DE CHAINE	1	94120112
55	BUTEE D'EXTREMITÉ DE CHAINE	1	94120150
56	CARTER GUIDE CHAINE	1	94120197
57	RONDELLE ENTRETOISE	2	94120216
58	SOLAIRE 1er ETAGE	1	95270108
59	COUVERCLE REDUCTEUR	1	95270109
60	CORPS DE FREIN	1	95270110
61	COUVERCLE DE FREIN	1	95270111
62	FLASQUE BRIDE	1	95270112
63	ARBRE MOTEUR	1	95270113
64	PORTE SATELLITE	1	95270114
65	CLAVETTE	1	95270115
66	TUBE DE DRAINAGE	1	95270116
67	TUBE DE FREIN	1	95270117
68	COURONNE	1	95270118
69	COURONNE	1	95270119
70	PISTON	1	96110010
71	BAGUE	1	96110012
72	MANCHON DE LIAISON	1	96220014

**SAMIHA**

B.P 59

59450 SIN LE NOBLE FRANCE

TEL. (33) 27.93.08.08

TELEX 820 221

TELEFAX (33) 27.93.08.00

CROCHET 3,5T

3,5T HOOK ASSEMBLY

NUMERO DE NOMENCLATURE

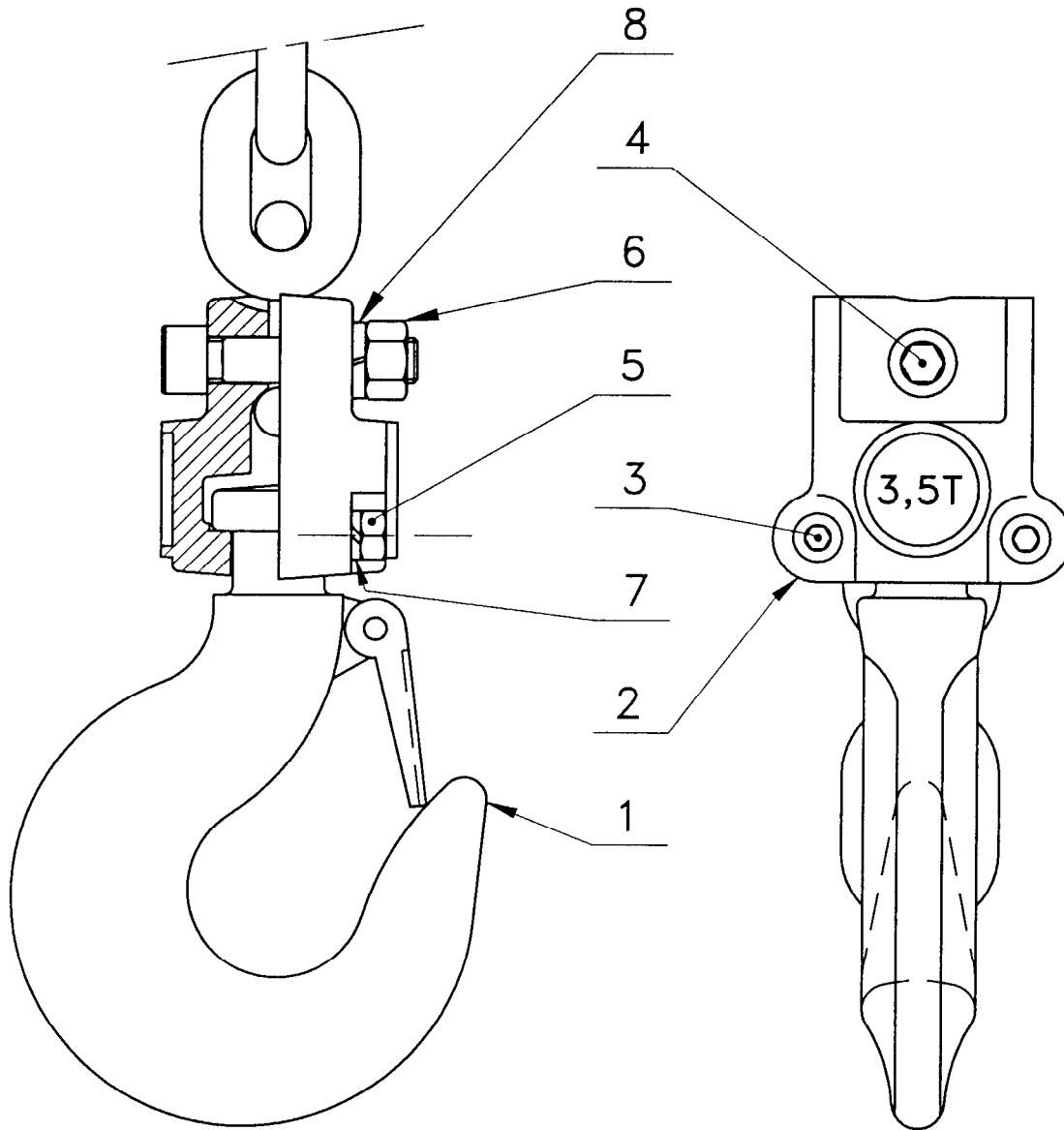
3 527 4414

NUMERO DU DOCUMENT

95/09/18 A 1 / 1

L. Quenon

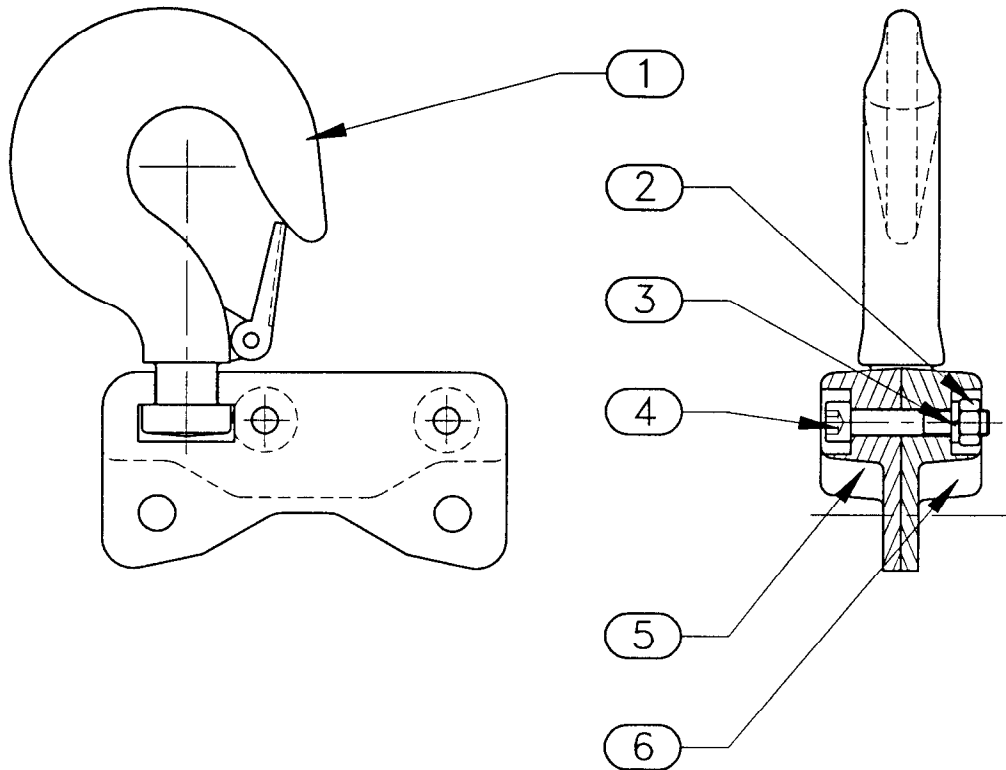
LE CHEF DU BUREAU D'ETUDES



REPERE ITEM	DESIGNATION	DESCRIPTION	QUANTITE QUANTITY	CODE	
				STANDARD	OPTION "R"
1	Crochet 3,5T	3,5T Hook	1	9.527.0060	
2	1/2 Flasque de crochet	Hook half flange	2	9.527.0061	
3	Vis CHC M8	Screw	2	4130.1806	
4	Vis CHC M12	Screw	1	4130.5606	
5	Ecrou Hu M8	Nut	2	4300.0111	
6	Ecrou Hu M12	Nut	1	4300.0311	
7	Rondelle W8	lockwasher	2	4520.0008	
8	Rondelle W12	lockwasher W12	1	4520.0012	

LIFTCHAIN 7T/3,5
SUSPENSION CROCHET

PLAN D'ENSEMBLE



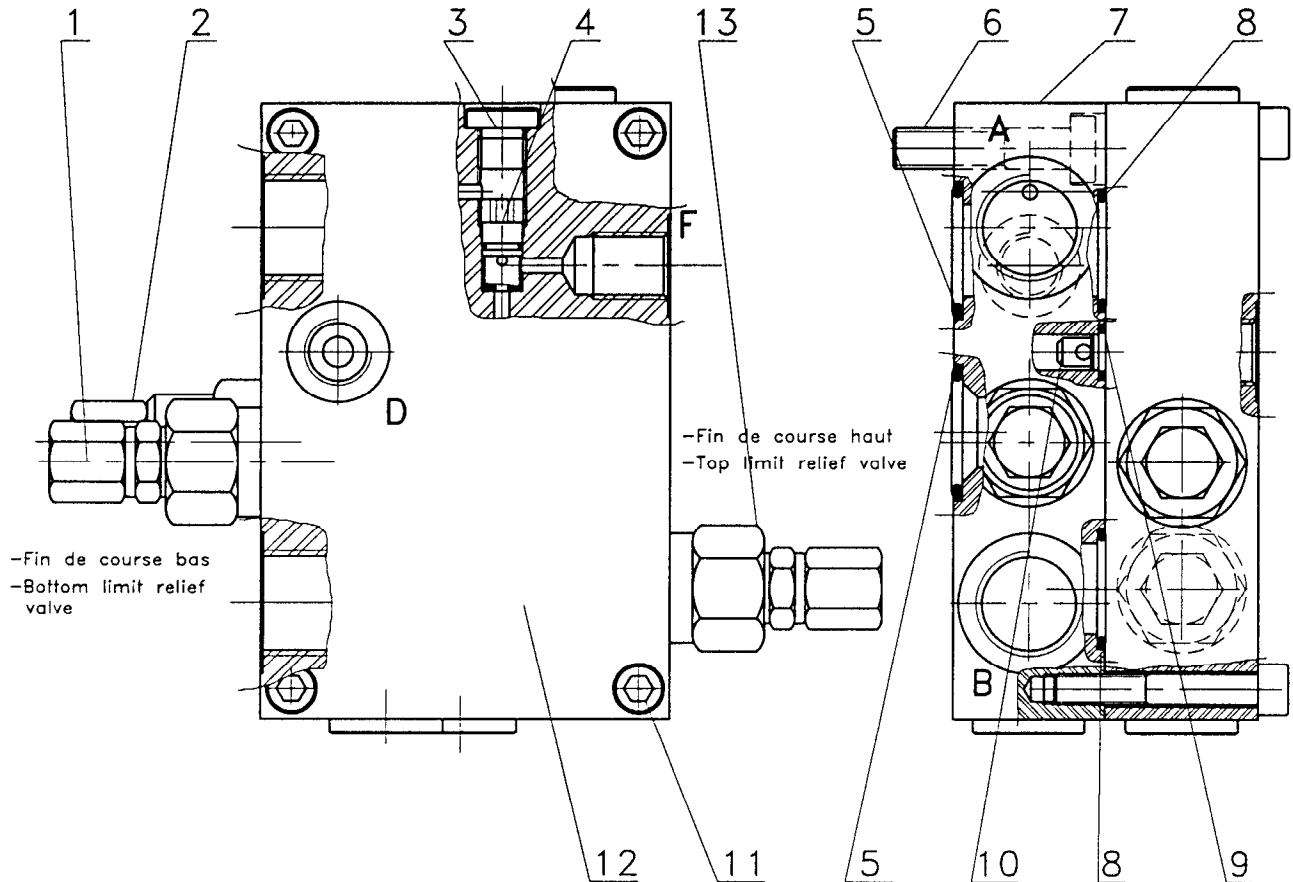
REPÈRE ITEM	DESIGNATION	DESCRIPTION	QUANTITE QUANTITY	CODE
1	Crochet 3,5T avec linguet	3,5T Hook	1	95270060
2	Ecrou Hu M10	Nut Hu M10	2	43000211
3	Rondelle Grower W10	Split wascher W10	2	45200010
4	Vis CHC M10x55 cl.12/9	Screw CHc M10x55	2	41308306
5	1/2 Chape de suspension	3.5T Suspension part	1	95270123
6	1/2 Chape de suspension	3.5T Suspension part	1	95270124

BLOC

HYDRAULIQUE de

REGULATION

Flasqué sur palan



Rép:3 Collé au LOCTITE 243

Rép:6 Collé au LOCTITE 243

Rép:11 Collé au LOCTITE 243

ITEM N°	DESIGNATION	DESCRIPTION	BEZEICHNUNG	QTY	CODE
1	Fin de course bas	Bottom limit relief valve		1	68416941
2	Valve d'équilibrage	Counterbalance valve		1	68463432
3	Bouchon	Plug		1	65110441
4	Sélecteur de circuit	Shuttle valve		1	68402441
5	Joint torique	O'ring		2	58216329
6	Vis CHc M8x35	Screw M8x35		4	41529006
7	Bloc régulation	Regulating block		1	95980067
8	Joint torique	O'ring		2	58214729
9	Joint torique	O'ring		2	58233429
10	Clapet anti retour	Check valve		2	68417041
11	Vis CHc M6x40	Screw M6x40		4	41314906
12	Bloc fin de course	Top and bottom limit block		1	95980068
13	Fin de course haut	Top limit relief valve		1	68416941