

INSTALLATION INSTRUCTIONS FOR FABRIC CHAIN CONTAINER KITS
ML10-K749-17 and ML10-K749-45
FOR USE ON SERIES ML LINK CHAIN HOISTS

WARNING

DISCONNECT THE HOIST FROM THE AIR SUPPLY BEFORE INSTALLING A CHAIN CONTAINER KIT.

NEVER USE A CHAIN CONTAINER WITHOUT THE BALANCE CHAIN.

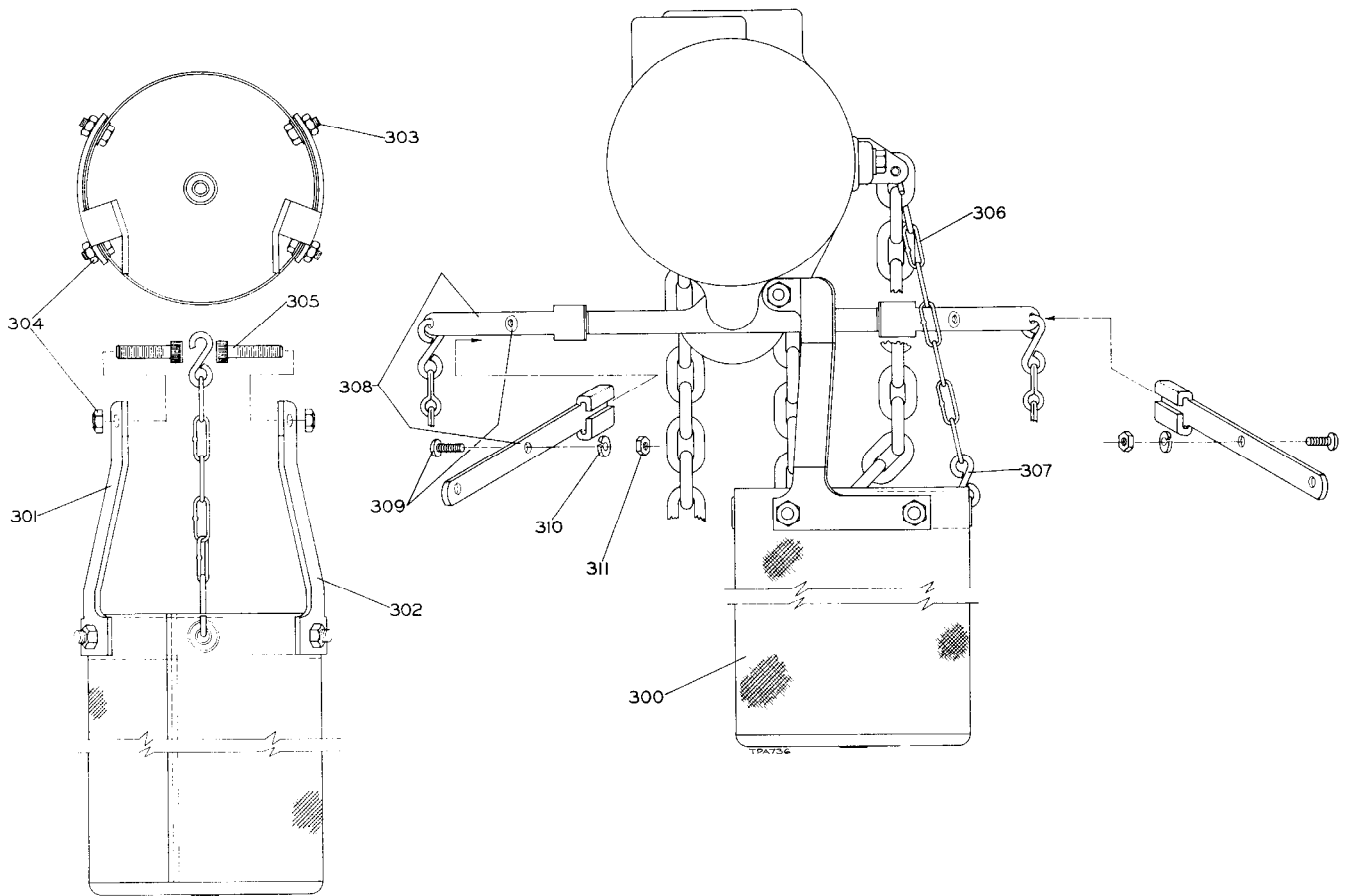
ALWAYS USE SELF-LOCKING STOP NUTS TO SECURE THE BOLTS REQUIRED.

ML10-K749-17 Kits are for use with ML5 or ML10 Single Line Hoists having up to a 17 foot lift, or with ML20 Double Line Hoists having up to a 9 foot lift.

ML10-K749-45 Kits are for use with ML5 or ML10 Single Line Hoists having up to a 45 foot lift, or with ML20 Double Line Hoists having up to a 23 foot lift.

Refer to the illustration on the back of this sheet and install a Fabric Chain Container as follows:

1. Insert the Container Bolts (305) through the boss on the Hoist housing and into the Brackets (301 and 302). Secure the Bolts with two Bracket Bolt Stop Nuts (304). **Note:** If the Container is to be allowed to swing outward, tighten the Nuts to within one turn of being fully tight. This will allow the Container to swing away from a load. Install the four Bracket Bolts (303) and Nuts (304) on the Container.
2. **For Pull Chain Models only**, attach the Extension Throttle Levers (308) to the existing throttle lever with the Lever Screws (309), Lock Washers (310) and Nuts (311).
3. Apply the Balance Chain (306) to the Container and Hoist using the S-hooks (307). Adjust the length of the Chain to prevent the load chain from rubbing the Container. Crimp the S-hook into the grommet in the Chain Container, as well as all other S-hooks as illustrated.



Fabric Chain Container for Series ML Link Chain Hoists

PART NUMBER FOR ORDERING

300	Fabric Chain Container to accommodate 17 ft. of chain to accommodate 45 ft. of chain	ML10-K749-17 ML10-K749-45
301	Left Bracket	ML50K-748
302	Right Bracket	ML50K-747
303	Bracket Bolt (4)	R2N-103
304	Bracket Bolt ESNA Stop Nut (6)	ML50K-394
305	Chain Container Bolt (2)	5080-638
306	Balance Chain	CA110-240-1/2
307	S-hook (2)	D02-421
308	Extension Throttle Lever (2)	ML-557
309	Lever Screw (2)	FEA100-26
310	Lever Lock Washer (2)	R2-320
311	Lever Nut (2)	MF-38