

**INSTRUCTIONS AND REPAIR PART LIST**

for

**SERIES C6CA AND C620C****ONE TON CAPACITY****AIR MOTOR DRIVEN OVERHEAD HOISTS**Form 6333  
First Edition  
October, 1975**DO NOT REMOVE  
FROM FILE****STANDARD HEADROOM SIZES**

| Standard | Spark-Resistant |
|----------|-----------------|
| C6CA15   | C6CA15SR        |
| C6CA25   | C620C20SR       |
| C620C20  | C620C32SR       |
| C620C32  | C620C40SR       |
| C620C40  | C620C60SR       |
| C620C60  | C620C100SR      |
| C620C100 |                 |

**LOW HEADROOM SIZES**

| Standard   | Spark-Resistant |
|------------|-----------------|
| C620C20LH  | C620C20LR       |
| C620C32LH  | C620C32LR       |
| C620C100LH | C620C100LR      |

**SUPERSEDED HOISTS****STANDARD HEADROOM SIZES**

| Standard  | Standard | Spark-Resistant |
|-----------|----------|-----------------|
| C6H20A15  | C6H20B14 | C6H20A15SR      |
| C6H20A22  | C6H20B20 | C6H20A22SR      |
| C6H20A28  | C6H20B32 | C6H20A28SR      |
| C6H20A35  |          | C6H20A35SR      |
| C6H20A40  |          | C6H20A40SR      |
| C6H20A60  |          | C6H20A60SR      |
| C6H20A100 |          | C6H20A100R      |

**LOW HEADROOM SIZES**

| Standard   | Spark-Resistant |
|------------|-----------------|
| C6H20A15LH | C6H20A15LR      |
| C6H20A22LH | C6H20A22LR      |
| C6H20A35LH | C6H20A35LR      |

Refer All Communications to the Nearest  
Ingersoll-Rand Branch Office or Distributor.

© Ingersoll-Rand Company 1975

**Ingersoll-Rand****Ingersoll-Rand**



## CONTENTS

| Section   | Page |
|---|------|
| Safe Operating Practices .....                        | 2    |
| Operating Instructions .....                          | 3    |
| Installation .....                                    | 3    |
| Lubrication .....                                     | 4    |
| Maintenance .....                                     | 4    |
| Motor Parts .....                                     | 9    |
| Pendent Throttle Handle and Hose Parts .....          | 14   |
| Remote Control Parts .....                            | 15   |
| Main Hoist Parts .....                                | 19   |
| Gear Case and Brake Parts .....                       | 24   |
| Sheave Block Parts .....                              | 27   |
| Top Hook Parts .....                                  | 29   |
| Trolley Parts for Standard Headroom Hoists .....      | 32   |
| Auxiliary Trolley Parts .....                         | 33   |
| Swivel Trolley Parts .....                            | 33   |
| Swivel Trolley Parts for Low Headroom Hoists .....    | 35   |
| Auxiliary Trolley Parts for Low Headroom Hoists ..... | 36   |
| Drawbar Parts .....                                   | 37   |
| Accessories .....                                     | 38   |
| Maintenance Tools .....                               | 38   |
| Parts for Superseded Hoists .....                     | 39   |

## SAFE OPERATING PRACTICES

The two most important aspects of safe Hoist operation are: (1) Allow only qualified people to operate a Hoist, and (2) Subject each Hoist to a regular inspection and maintenance procedure.

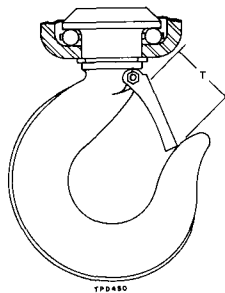
A qualified operator must be physically competent. He must have no health condition which might affect his ability to react, and he must have good hearing, vision and depth perception. The qualified Hoist operator must be carefully instructed in his duties and must understand the operation of the Hoist, including a study of the manufacturer's literature. He must thoroughly understand proper methods of hitching loads. He should have a good attitude regarding safety and should refuse to operate under unsafe conditions.

Regular inspection procedures should be set up, rigidly adhered to and recorded by or under the direction of a qualified person. On Hoists in continuous service, inspection should be made at the beginning of each shift. The items to be checked include, but are not limited to:

- a. Lubrication according to manufacturer's instructions.
- b. **Brakes:** Visually check for proper adjustment (see Brake Adjustment on page 4). Lift a capacity or near capacity load a few inches off the floor and check the ability of the braking system to stop and hold the load without excessive drift.
- c. **Wire Rope and Hooks:** Visually inspect the wire rope. Replace it **at once** if there is indication of fraying, or if it is crushed, cut or otherwise damaged.

Hooks should be checked for wear, increase in throat opening, and bending.

**Note:** Increased throat opening or a bent hook indicates overloading or abuse. Replace hooks having a 15% increase in throat or 10% bend. If the safety latch snaps past the tip of the hook, the hook is sprung and must be replaced. Check hook support bearings for lubrication or damage. See that they swivel easily and smoothly.



| HOOK ASSEMBLY NUMBER | "T" Throat Opening |    |         |    |
|----------------------|--------------------|----|---------|----|
|                      | New                |    | Discard |    |
|                      | inches             | mm | inches  | mm |
| C6H20A-AS377         | 1 1/4              | 32 | 1 7/16  | 36 |
| C6H20A-ASR377        | 1 1/2              | 38 | 1 23/32 | 43 |
| C6H20A-ABB377        | 1 1/4              | 32 | 1 7/16  | 36 |

Refer to Hook Replacement in MAINTENANCE Section.

- d. **Controls:** See that the controls function properly and return to neutral when released. Check the functioning of up and down stops by running the empty hook slowly to both extremes of travel. If the hook does not stop in its normal position, do not operate the Hoist until the cause of the trouble is located and corrected.
- e. **General:** Check to see that suspension fastenings are secure, unworn and undamaged. On trolley-mounted Hoists, check that trolley wheels track the rail properly and that wheels and rail are not excessively worn. Be alert for unusual visual or audible signs which could indicate a defect. Do not operate the Hoist until the defect has been determined and corrected.

Periodically, depending on the severity of the service:

- a. Inspect the top and bottom hooks with a magnetic particle or other crack detector.
- b. Check the hook thrust bearings for smoothness and ascertain that the hook nuts are properly tightened and locked.
- c. Check the condition of the trolley wheels and bearings by lifting a capacity load with the Hoist and slowly moving it along the track, paying particular attention for rough or bumpy operation.
- d. Check all bolts or fasteners used in the suspension of the Hoist.

## OPERATING INSTRUCTIONS

1. Read the manufacturer's instructions before operating the Hoist.
2. Never lift a load greater than the rated capacity of the Hoist.
3. Never use the Hoist rope as a sling.
4. Always stand clear of the load.
5. Never use the Hoist for lifting or lowering people, and never stand on a suspended load.
6. Never carry loads over people.
7. Before each shift, check the Hoist for wear or damage. Check brakes, limit stops, etc.
8. Periodically inspect the Hoist thoroughly and replace worn or damaged parts.
9. Follow the lubrication instructions.
10. Do not attempt to repair load hooks. Replace them when worn or damaged.
11. Never operate a Hoist when the load is not centered under the hook. Do not "side pull" or "yard".
12. Always rig the Hoist properly and carefully.
13. Never operate a Hoist with twisted, kinked or damaged wire rope.
14. Ease the slack out of the wire rope and sling when starting a lift. Do not jerk the load.
15. Keep the wire rope clean and well lubricated. Do not drag it or the hook on the floor.
16. Be certain there are no objects in the way of a load or hook when moving the Hoist.
17. Be certain the air supply is shut off before performing maintenance work on the Hoist.
18. Avoid swinging the load when moving the Hoist. Slowly start the trolley.
19. Keep the load block overhead when not in use.
20. Properly secure the Hoist before leaving it unattended.
21. Be certain the load is properly seated in the saddle of the hook. Do not tiplod the hook as this leads to spreading and eventual failure of the hook.
22. Do not allow unqualified personnel to operate a Hoist.
23. Avoid collision or bumping of Hoists. Do not swing a suspended load.
24. Do not operate a Hoist if you are not physically fit to do so.
25. Do not do anything you believe may be unsafe.
26. Do not use the Hoist rope as a ground for welding. Do not attach a welding electrode to a Hoist or sling chain.
27. Do not divert your attention from the load while operating a Hoist.
28. Do not use up and down stops as a means of stopping a Hoist—these are emergency devices only.
29. Do not leave a load suspended for any extended period—never unattended.
30. Never splice a sling chain by inserting a bolt between links.
31. Do not force a chain or hook into place by hammering. Do not insert the point of the hook into a chain link.
32. Do not expose the sling chain to freezing temperatures, and do not apply sudden loads to a cold chain.

## INSTALLATION

Proper installation is a prime factor in safe, efficient and trouble free operation. The following standards should be followed in planning and execution:

1. **Hoist Support:** Install the Hoist only after determining that the support is ample for loadings equal to at least **five times** the combined weights of the Hoist and rated load.
2. **Air Supply:** Compressor and supply line must have the capacity to maintain 80 psig (551 kPa) air pressure at the air inlet of the Hoist. We recommend:
  - a. 1" (25 mm) diameter, or larger, pipe or hose for the supply line.
  - b. That a No. EU-A267 Air Strainer, or a No. NFLU-16 Filter-Lubricator Unit be installed as close as practical to the Hoist. **Note:** Use of a Lubricator is **not** a substitute method of lubricating the motor. Instead it supplements the crank splash system. Procedures outlined under **Lubrication** must be followed even though air line lubrication is provided.
  - c. Use some type of support for supply hose to protect it and keep it out of the way. An Ingersoll-Rand AHC Hose Carrier is the finest system available. Hose Trolleys that operate on I-Beams or that operate on a special track are also available from Ingersoll-Rand. Various hose reels are also on the market. The Ingersoll-Rand Sales Engineer will be glad to assist you.
3. **Lug Mounting:** Design and construct mounting in accordance with the following standards:
  - a. Use bolts of maximum diameter that will pass through holes in mounting boss on the Hoist.
  - b. Use a lug or plate on **each** side of the boss.
  - c. Bolt lugs or plates solidly to the Hoist and support. If necessary, use spacers to maintain lugs parallel to each other.
  - d. Mounting must hold the Hoist so that the longitudinal centerline of the drum is level.

4. **Top Hook:** Be sure the support rests completely within the saddle of the hook and that it is centered directly above the hook shank. Do not attach the hook to any support that causes the Hoist to cant in any direction.
5. **Trolleys:** Observe the following guidelines when installing a trolley-mounted Hoist:
  - a. Make certain that the trolley is correct for the track.
  - b. Space trolley brackets so that the distance between the wheel flanges is  $\frac{1}{4}$ " (6 mm) greater than the width of the track flange. Use equal spacers on each side of boss so that Hoist is centered under track. The correct amount of spacers is supplied with the Trolley for mounting a Hoist on an I-Beam or Flat-Tread Monorail with the specified flange width.
  - c. Use a  $90^\circ$  Angle Attachment if the application requires that the rope drum be at right angles to rather than in line with the track. The Attachment can be used on any Hoist with single mounting boss.

**WARNING: Before shipment, all oil was drained from the Motor Case (1).** A quantity of oil sufficient for one filling is contained in the can packed with the Hoist. Before operating the Hoist, close the Oil Cock (2) at the bottom of the Motor Case, remove the Vent Cap (3), and pour the entire contents of the can into the Motor Case. Remove the large pipe plug from the top of the Gear Case (140) and replace it with the Gear Case Vent Cap (149).

- d. Slowly move the Hoist (without load) from one end of the track to the other to ascertain that there is proper clearance and that the trolley operates smoothly. Apply a load to the Hoist and repeat.
- e. Provide stops on the track to prevent overtravel.
6. **Muffler:** A safety chain is furnished with each Ingersoll-Rand Muffler. Secure the end of the Chain under a cap screw so that the Muffler will not fall should it loosen or be broken from the Hoist.

## LUBRICATION

**Recommended Lubricants:** (See special instructions for Hoists with Dual Brakes.)

### Motor and Gearing

**For ambient temperatures of  $30^\circ$  F to  $80^\circ$  F,** use Ingersoll-Rand Medium Oil No. 50, or SAE 30 Motor Oil, or any non-emulsifying, non-detergent, rust-inhibiting, oxygen-stable oil meeting AGMA Standard No. 2.

**For ambient temperatures below  $30^\circ$  F,** use SAE 20 or 20W Motor Oil, or a non-emulsifying, non-detergent, rust-inhibiting, oxygen-stable oil of equivalent viscosity.

**For ambient temperatures above  $80^\circ$  F,** use SAE 40 Motor Oil, or any non-emulsifying, non-detergent, rust-inhibiting, oxygen-stable oil meeting AGMA Standard No. 3.

**For Hoists with Dual Brakes,** use Ingersoll-Rand No. 10 Oil in the Gear Case to obtain proper load brake functioning. (Note: The only fully acceptable substitute for Ingersoll-Rand Oil No. 10 is Mobil-Kote No. 501).

### Sheaves, Valve Chest and Trolley Wheels:

Use Ingersoll-Rand Lubricant No. 28 or No. 2 Multi-Purpose Grease.

### Maintain Oil Level in Motor Case and Gear Case

At regular intervals, depending on the service to which the Hoist is subjected, check the oil in the Motor Case as follows:

1. After the Hoist has been idle for several hours, open the Oil Cock (2) at the bottom of the Motor Case (1) and allow the accumulated water to drain out; then close.
2. Open the Oil Cock in the side of the Motor Case and unscrew the Vent Cap (3) from the top of the Motor Case.
3. Add sufficient oil through the top opening to raise the oil level to the line on the sight glass or even with the open Oil Cock in the side of the Motor Case. At regular intervals, check the Oil Level Gauge in the Gear Case.

If necessary, add the recommended oil to maintain the oil level at the line on the glass.

**Weekly,** or as experience indicates, inject 2 or 3 strokes of the recommended grease into all Grease Fittings.

## MAINTENANCE

**Keep the Wire Rope tightly wound on the grooved Rope Drum (96).** Before putting a grooved-drum Hoist in service and periodically thereafter, run the Hoist in the lowering direction as far as the down-stop will permit. Apply a load to the Hook and rewind the Rope on the Drum. During storage, shipment or if the Hoist is used primarily for lowering loads, the Wire Rope tends to uncoil. If not corrected, loops will form which may in time cross over one another and cause serious damage.

### Adjustment of Diaphragm Brake

Screw the Brake Adjusting Nuts (173) along the brake plate studs until there is  $\frac{1}{32}$ " to  $\frac{1}{16}$ " play of the Brake Plunger (177) on the studs.

## Hook Replacement

In the original design, and continuing into 1975, the Hook Nut was locked on the shank of the Hook by upsetting the end of the shank after the Hook was installed in the Sheave Block or Top Hook Yoke. This is an effective method of locking, but it does make removal difficult if the Hook or Bearing must be replaced. Because of this, the Hook shank has been modified to include a cross hole, the Nut has been changed to a slotted type and a Lock Pin is used. The new style parts can be used, in combination, to replace the previous parts in the original Sheave Block or Yoke. To facilitate the installation of the Lock Pin, the small hole in the side of the Block now being furnished has been relocated to align with the cross hole in the hook shank. It may be necessary to drill a hole in the side of old style Sheave Blocks to allow installation of the new style Hook and Lock Pin.

## Reverse Valve Removal

Unscrew the Throttle Valve Cap (49) and withdraw the Spring (48), Poppet Throttle Valve (43) and Ball (47) before attempting to withdraw the Reverse Valve (41) from the Reverse Valve Bushing (29).

## Valve Chest Removal

Use two No. D02-932 Valve Chest Jack Bolts ( $\frac{1}{2}$ "-13 thd. x  $5\frac{1}{4}$ " long) to remove the Valve Chest (27) from the Motor Case (1).

## Removal and Installation of the Reverse Valve Bushing

When pressing the Reverse Valve Bushing (29) from the Valve Chest (27), use an arbor that will clear the Bushing Key that projects into the Valve Chest bore. Always press against the bushing face that is flush with the cover side of the Valve Chest.

Always press a new Bushing, grooved end first, into the motor case side of the Valve Chest, making certain that the groove along the side of the Bushing is aligned with the Bushing Key. Press in the new Bushing until its leading face is flush with the cover side of the Valve Chest. Insert No. 23470 Throttle Valve Stem Reamer into the bottom bore of the Valve Chest from which the Poppet Throttle Valve was removed, and ream the hole in the wall of the Bushing to .505". If the Reverse Valve fits too tightly in the new Bushing, ream the Bushing 1.625".

## Motor Removal

Should it ever become necessary to remove the Motor for repair or replacement of parts, do not remove the Stop Lever Bracket Screws (124). These Screws will retain the Motor Case Cover (90) on the Hoist Housing (92) so that the Motor can be removed without disturbing the Rope Drum (96) and related parts.

## Crank Assembly

The two sections of the Crank (9) are joined and marked before final machining; only those parts with identical markings can be used together. If two or more Cranks are disassembled at the same time, be certain that only parts with identical markings are assembled together. Use a new Crank Taper Pin (10) each time a Crank is reassembled. Lightly strike the large end of the Crank Taper Pin to seat it in the Crank, and then spread the split end of the Pin.

## Gear Case and Gearing

The Gear Case Cover (145) is retained on the Housing (92) by two socket head Gear Case Cover Retaining Screws so that the Gear Case (140) can be removed from the Hoist without disturbing the Rope Drum (96) and related parts.

Use two  $\frac{3}{4}$ "-10 thd. x 6" long jack bolts to pull the Drum Gear off the hub of the Rope Drum.

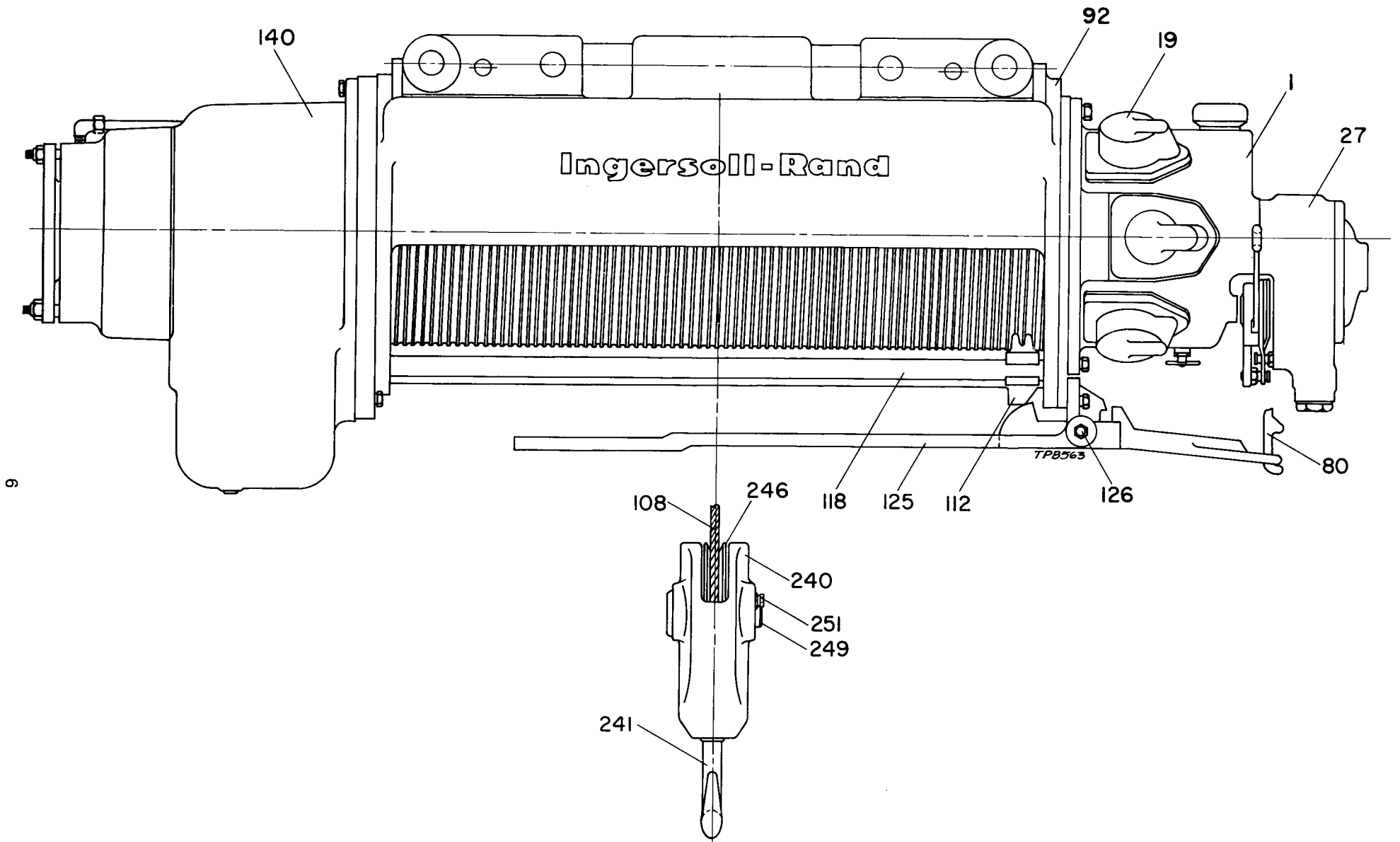
Press the Intermediate Shaft Inner Bearing (157) into the bearing recess in the Gear Case Cover (152) before pressing the Drum Gear onto the hub of the Rope Drum.

When assembling Mechanical Load Brake parts note that one side of the Brake Ratchet Assembly (165) and Load Brake Flange (160) is stamped with an "X". When these parts are assembled in the Gear Case make certain that both "X's" face the Gear Case Cover.

## REPAIR PARTS

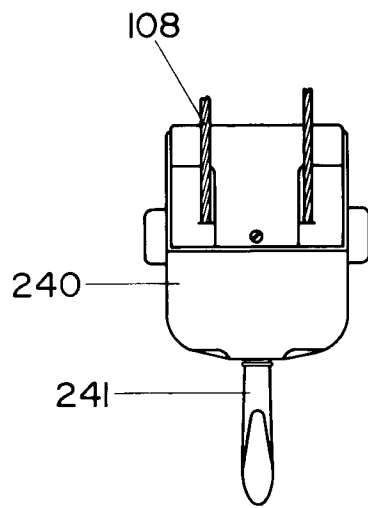
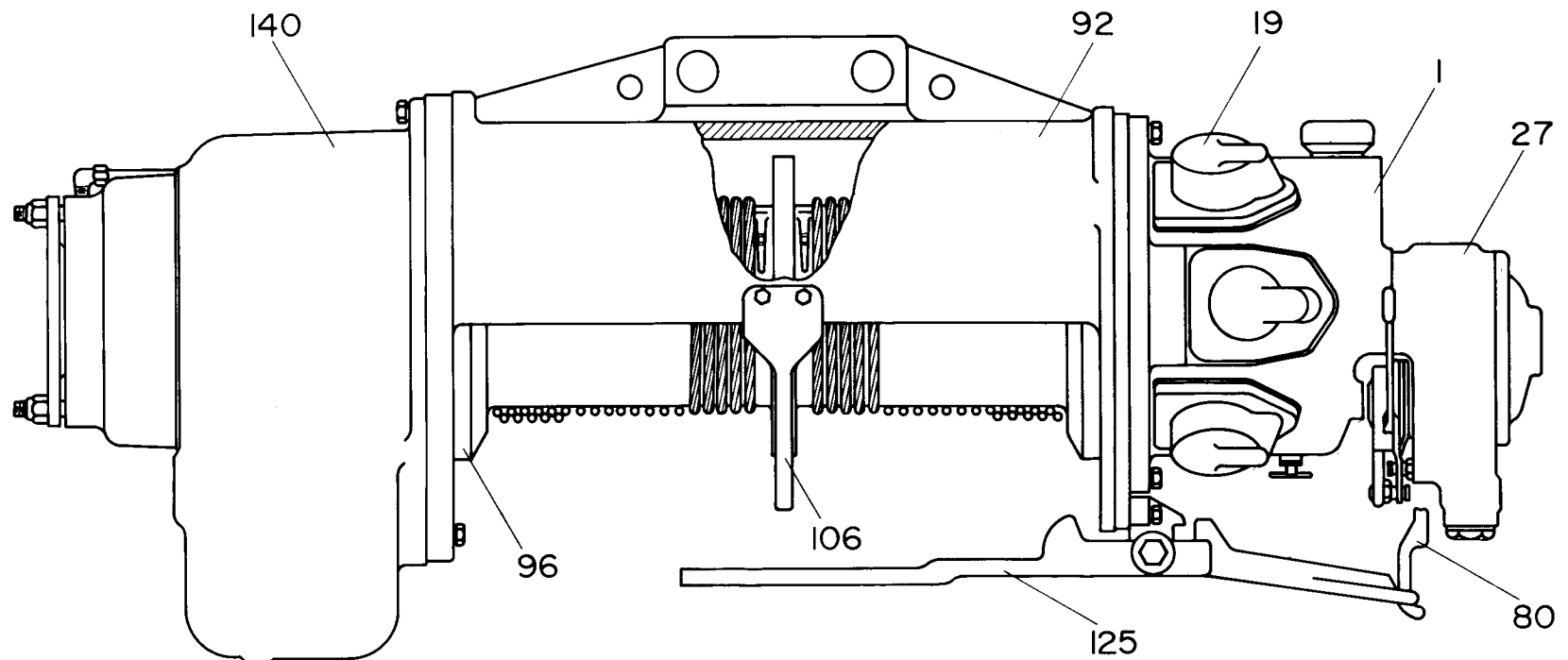
To keep costly downtime to a minimum, it is desirable to have on hand certain repair parts. To guide you in the stocking of repair parts, certain Illustration Numbers of the Repair Part List are marked with a bullet (●). We recommend that with parts so indicated, you stock one (pair or set) repair part for every four tools in service.

If the tools are being used in remote geographical areas, or are subject to unusually severe service, the items and quantities should be increased. Contact the nearest Ingersoll-Rand Company Branch for recommendations.

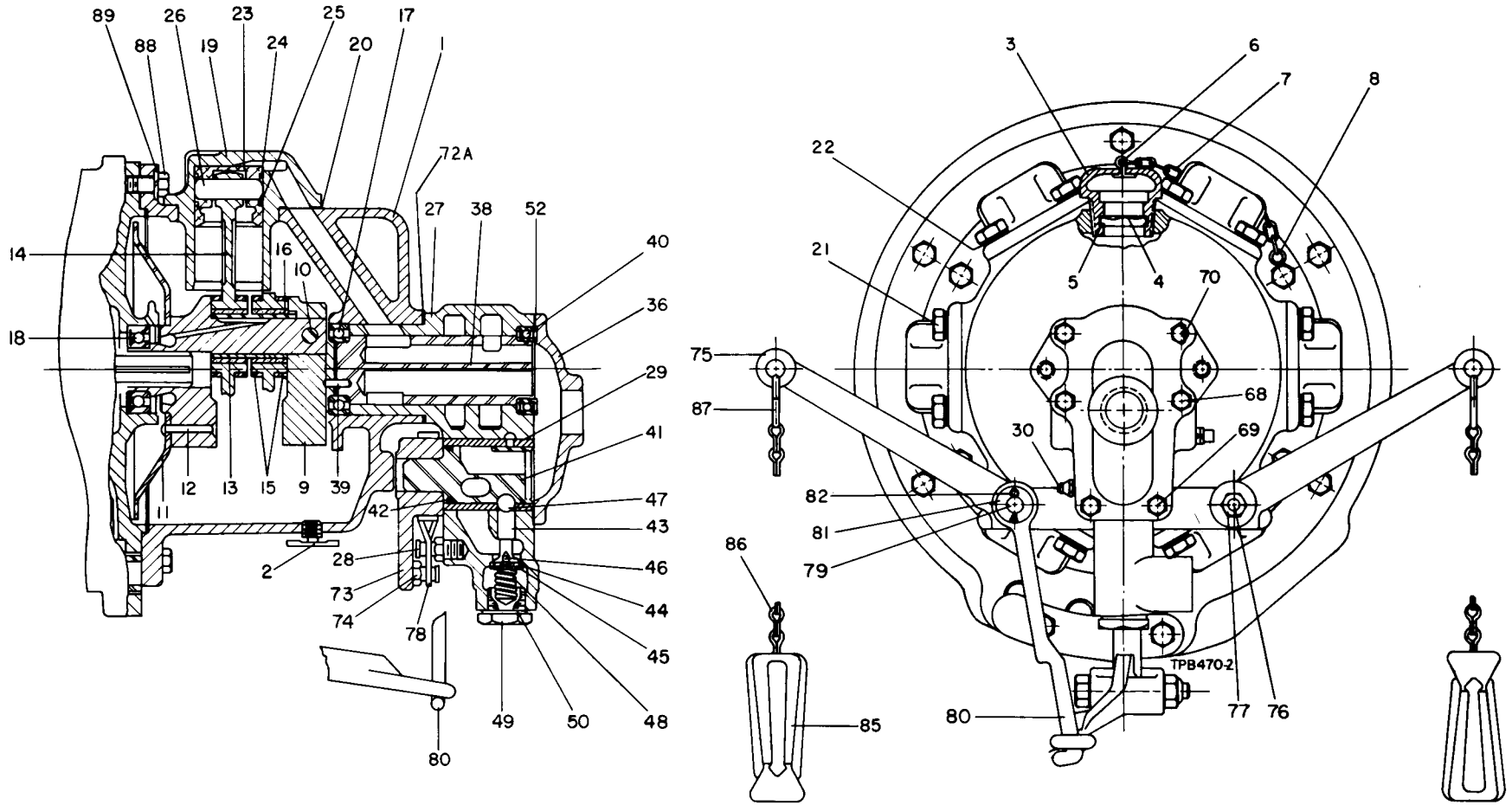


Size C620C60 Hoist with Pull-Chain Throttle





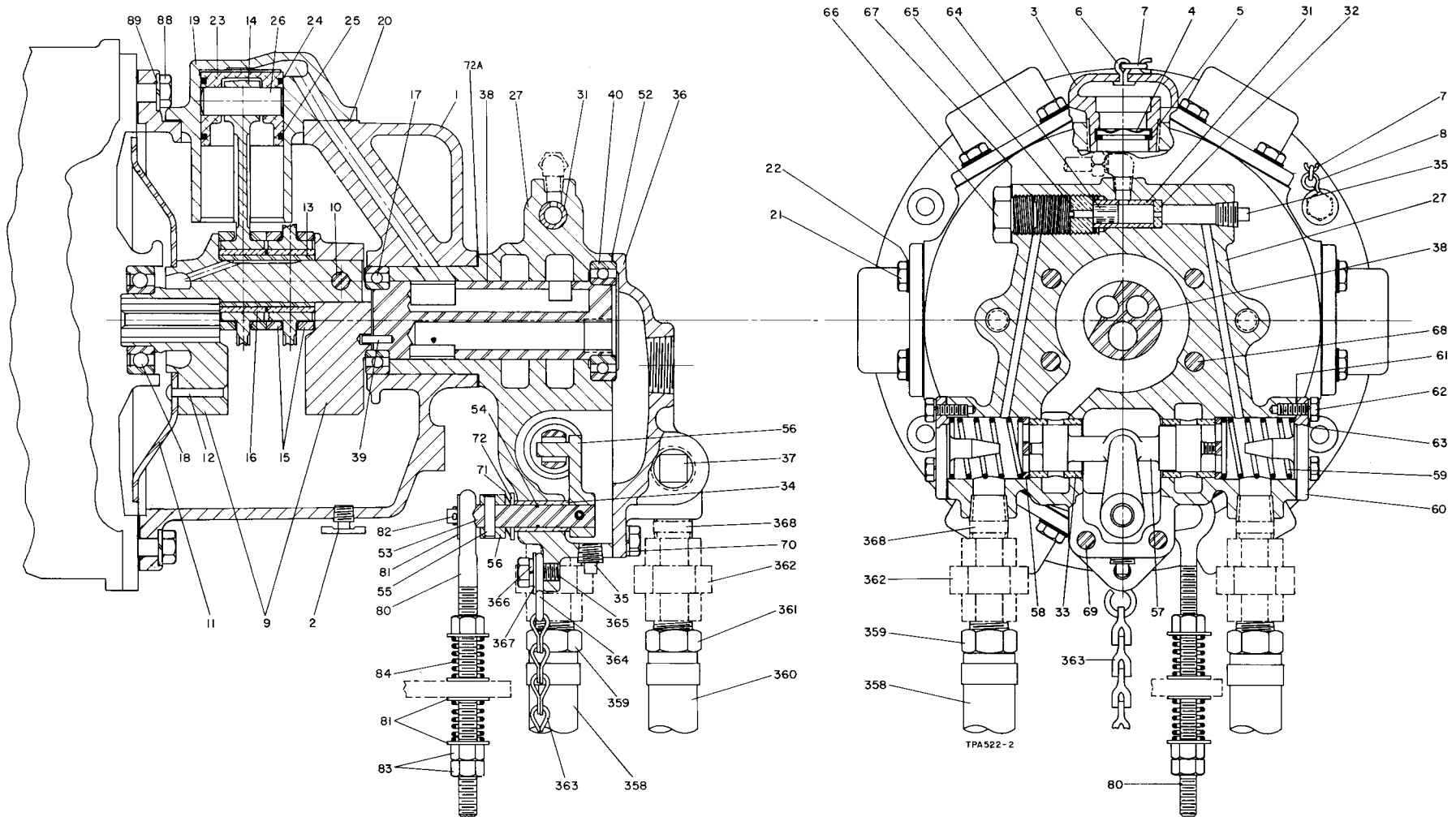
Size C620C100 Hoist with Pull-Chain Throttle



Six-Cylinder Hoist Motor with Pull-Chain Throttle Valve Chest

## MOTOR PARTS

| ILLUS.<br>NUMBER<br>(Do not use<br>for ordering) | PART NAME FOR ORDERING<br><br>(Parts indented after an item are included with that item) | PART NUMBER FOR ORDERING |   |
|--|--|--------------------------|---|
|  |  | TYPE OF CONTROL          |   |
|  |  | PULL-CHAIN<br>THROTTLE   | PENDENT<br>THROTTLE<br>OR REMOTE<br>CONTROL |
|  | Motor Assembly   |                          |   |
|  | for Hoist equipped with Diaphragm Brake . . . . .  | C6H20A-DA501             | C6H20A-PDA501                               |
|  | for Hoist equipped with Dual Brake . . . . .   | C6H20A-A501              | C6H20A-PDA501                               |
| 1  | Motor Case . . . . .   | C6H20A-501               | C6H20A-501                                  |
| 2  | Oil Cock (2) . . . . .   | D02-308                  | D02-308                                     |
| 3  | Vent Cap Assembly . . . . .  | D02-303A                 | D02-303A                                    |
| 4  | Vent Cap Screen . . . . .  | D02-889                  | D02-889                                     |
| 5  | Vent Cap Screen Retainer . . . . .   | 6CND-233-1/2             | 6CND-233-1/2                                |
| 6  | Vent Cap Cotter . . . . .  | D02-893                  | D02-893                                     |
| 7  | Vent Cap Chain . . . . .   | D02-891                  | D02-891                                     |
| 8  | S-Hook . . . . .   | D02-421                  | D02-421                                     |
| 9  | Crank and Connecting Rod Assembly . . . . .  | C6H20A-A516              | C6H20A-A516                                 |
|  | Crank Assembly . . . . .   | C6H20A-B516              | C6H20A-B516                                 |
| 10   | Crank Taper Pin . . . . .  | D10-520                  | D10-520                                     |
| 11   | Oil Splasher . . . . .   | C6H20A-540               | C6H20A-540                                  |
| 12   | Oil Splasher Rivet (3) . . . . .   | C6H20A-541               | C6H20A-541                                  |
| 13   | Crank Pin Sleeve . . . . .   | C6H20A-519               | C6H20A-519                                  |
| 14   | Connecting Rod (6) . . . . .   | C6H20A-509               | C6H20A-509                                  |
| 15   | Connecting Rod Ring (4) . . . . .  | C6H20A-510               | C6H20A-510                                  |
| ● 16   | Connecting Rod Bushing (2) . . . . .   | C6H20A-511               | C6H20A-511                                  |
| ● 17   | Crank Bearing, Valve End (AFBMA No. 25BC10) . . . . .                                    | C6H20A-518               | C6H20A-518                                  |
| ● 18   | Crank Bearing, Spline End (AFBMA No. 30BC02JP) . . . . .                                 | C04-318                  | C04-318                                     |
| 19   | Cylinder (6) . . . . .   | C6H20A-505               | C6H20A-505                                  |
| ● 20   | Cylinder Gasket (6) . . . . .  | C6H20A-507               | C6H20A-507                                  |
| 21   | Cylinder Cap Screw (24) (3/8"-16 thd. x 7/8" long) . . . . .                             | D02-506                  | D02-506                                     |
| 22   | Cylinder Cap Screw Washer (24) (3/8" copper washer) . . . . .                            | D02-504                  | D02-504                                     |
| 23   | Piston Assembly (6) . . . . .  | D02-513B                 | D02-513B                                    |
| ● 24   | Piston Ring (one for each Piston) . . . . .  | D02-337A                 | D02-337A                                    |
| ● 25   | Oil Regulating Piston Ring (one for each Piston) . . . . .                               | D02-338                  | D02-338                                     |
| 26   | Piston Wrist Pin (6) . . . . .   | D02-514                  | D02-514                                     |



**Six-Cylinder Hoist Motor with Pendant Throttle or Remote Control Valve Chest**

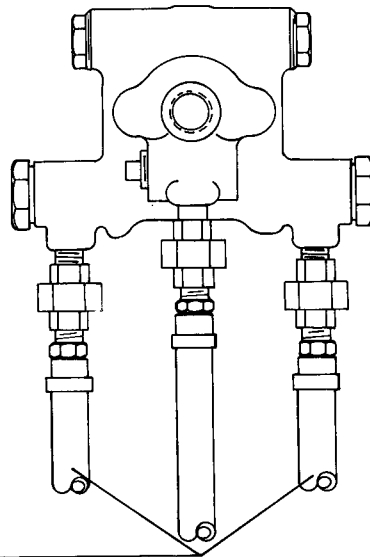
**MOTOR PARTS (Continued)**

| ILLUSTRATION NUMBER<br>(Do not use for ordering) | PART NAME FOR ORDERING<br><br>(Parts indented after an item are included with that item) | PART NUMBER FOR ORDERING |                                    |
|--|--|--------------------------|------------------------------------|
|  |  | TYPE OF CONTROL          |                                    |
|  |  | PULL-CHAIN THROTTLE      | PENDENT THROTTLE OR REMOTE CONTROL |
|  | Valve Chest and Valve Assembly<br>for Hoist with Diaphragm Brake . . . . .               | C6H20A-DA545             | C6H20A-A45                         |
|  | for Hoist with Dual Brake . . . . .  | C6H20A-A545              | C6H20A-A45                         |
| 27   | Valve Chest Assembly . . . . .   | C6H20A-B545              | C6H20A-B45                         |
| 28   | Throttle Lever Spring Stop Pin . . . . .   | D02-553                  | - - - - -                          |
| ● 29   | Reverse Valve Bushing . . . . .  | C6H20A-945               | - - - - -                          |
| *  | Reverse Valve Bushing Key . . . . .  | D02-538                  | - - - - -                          |
| 30   | Grease Fitting . . . . .   | R1-188                   | - - - - -                          |
| 31   | Brake Valve Bushing . . . . .  | - - - - -                | D10-63                             |
| 32   | Brake Valve Disc . . . . .   | - - - - -                | D10-44                             |
| ● 33   | Shuttle Valve Bushing (2) . . . . .  | - - - - -                | C6H20A-247                         |
| 34   | Stop Arm Shaft Bushing . . . . .   | - - - - -                | C6H20A-243                         |
| 35   | 1/4" Pipe Plug (1 additional for Hoist with Diaphragm Brake) . . . . .                   | - - - - -                | D02-402                            |
| 36   | Valve Chest Cover . . . . .  | C6H20A-546               | C6H20A-241                         |
| 37   | Air Inlet Plug . . . . .   | - - - - -                | 22SR-165                           |
| 38   | Rotary Valve Assembly . . . . .  | C6H20A-A526              | C6H20A-A526                        |
| 39   | Rotary Valve Pin . . . . .   | 510-669A                 | 510-669A                           |
| ● 40   | Rotary Valve Bearing (AFBMA No. 40BC10) . . . . .  | R4800-97                 | R4800-97                           |
| 41   | Reverse Valve Assembly<br>for Hoist with Diaphragm Brake only . . . . .                  | C6H20A-A744              | - - - - -                          |
|  | for Hoist with Dual Brake . . . . .  | C6H20A-A944              | - - - - -                          |
| ● 42   | Reverse Valve Seal . . . . .   | C6H20A-948               | - - - - -                          |
| 43   | Poppet Throttle Valve Assembly . . . . .   | C6H20A-A940              | - - - - -                          |
| ● 44   | Poppet Throttle Valve Face . . . . .   | C6H20A-259               | - - - - -                          |
| 45   | Valve Face Cap . . . . .   | 588-157                  | - - - - -                          |
| 46   | Valve Face Cap Screw (No. 8-32 thd. x 3/8" long) . . . . .                               | R10V-404                 | - - - - -                          |
| 47   | Throttle Valve Ball (1/2" dia. steel ball) . . . . .                                     | D10-280                  | - - - - -                          |
| ● 48   | Throttle Valve Spring . . . . .  | B01-11                   | - - - - -                          |
| 49   | Throttle Valve Cap . . . . .   | C6H20A-943               | - - - - -                          |
| 50   | Throttle Valve Cap Gasket . . . . .  | D02-239                  | - - - - -                          |
| 51   | Brake Inlet Plug (1/8" pipe plug) . . . . .  | P250-368                 | - - - - -                          |
| ● 52   | Valve Chest Cover Gasket . . . . .   | C6H20A-928               | C6H20A-236                         |
| 53   | Stop Arm Shaft Assembly . . . . .  | - - - - -                | C6H20A-A255                        |
| ● 54   | Stop Arm Shaft Seal . . . . .  | - - - - -                | R000BR-210                         |
| 55   | Stop Arm Shaft Pin (2) . . . . .   | - - - - -                | D01-256                            |
| 56   | Stop Arm (2) . . . . .   | - - - - -                | C6H20A-254                         |

\* Not illustrated.

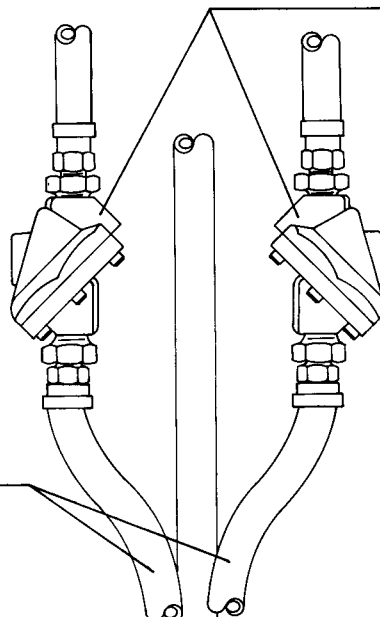
MOTOR PARTS (Continued)

| ILLUSTRATION NUMBER<br>(Do not use for ordering) | PART NAME FOR ORDERING<br><br>(Parts indented after an item are included with that item)   | PART NUMBER FOR ORDERING |                                    |
|--|--|--------------------------|------------------------------------|
|  |  | TYPE OF CONTROL          |                                    |
|  |  | PULL-CHAIN THROTTLE      | PENDENT THROTTLE OR REMOTE CONTROL |
| 57   | Shuttle Valve . . . . .  | - - - - -                | C6H20A-246                         |
| 58   | Shuttle Valve Washer (2) . . . . .   | - - - - -                | C6H20A-248                         |
| ● 59   | Shuttle Valve Spring (2) . . . . .   | - - - - -                | C6H20A-250                         |
| 60   | Shuttle Valve Cap (2) . . . . .  | - - - - -                | C6H20A-238                         |
| ● 61   | Shuttle Valve Cap Gasket (2) . . . . .   | - - - - -                | C6H20A-239                         |
| 62   | Shuttle Valve Cap Screw (6) (1/4"-20 thd. x 5/8" long) . . . . .   | - - - - -                | R2N-103                            |
| 63   | 1/4" Lock Washer (6) . . . . .   | - - - - -                | L01-67                             |
| 64   | Brake Valve . . . . .  | - - - - -                | D10-62                             |
| 65   | Brake Valve Seat . . . . .   | - - - - -                | D01-65                             |
| 66   | Brake Valve Cap . . . . .  | - - - - -                | D01-943                            |
| ● 67   | Brake Valve Cap Gasket . . . . .   | - - - - -                | D01-946                            |
| 68   | Valve Chest Screw (4) (3/8"-16 thd. x 4" long) . . . . .   | C6H20A-548               | C6H20A-548                         |
| 69   | Valve Chest Cover Screw (2) (3/8"-16 thd. x 7/8" long) . . . . .   | D02-506                  | D02-506                            |
| 70   | 3/8" Lock Washer (6) . . . . .   | D02-321                  | D02-321                            |
| ● 71   | Friction Spring (1 for Pull Chain; 2 for others) . . . . .   | D01-268                  | D01-268                            |
| 72   | Friction Spring Washer . . . . .   | - - - - -                | 23-725                             |
| 72A  | Valve Chest Gasket . . . . .   | C6H20A-128               | C6H20A-128                         |
| 73   | Throttle Control Arm Assembly . . . . .  | C6H20A-A555              | - - - - -                          |
| 74   | Throttle Lever Spring Stop Pin . . . . .   | D02-553                  | - - - - -                          |
| 75   | Throttle Lever (2) . . . . .   | D02-556                  | - - - - -                          |
| 76   | Throttle Lever Bolt . . . . .  | D02-411A                 | - - - - -                          |
| 77   | Throttle Lever Bolt Nut (2) (1/2"-13 thd. jam nut) . . . . .   | D02-418A                 | - - - - -                          |
| ● 78   | Throttle Lever Spring . . . . .  | D02-412B                 | - - - - -                          |
| 79   | Stop Link Bolt . . . . .   | D02-523                  | - - - - -                          |
| 80   | Stop Lever Link  |                          |                                    |
|  | Standard . . . . .   | C6H20A-424               | D02-224                            |
|  | Spark-Resistant . . . . .  | C6H20A-R424              | D02-1224                           |
| 81   | Stop Link Washer (5 for Pendent Throttle; 1 for others) . . . . .  | D02-419                  | D02-419                            |
| 82   | Stop Link Bolt Cotter (3/32" x 3/4") . . . . .   | D02-524                  | D02-524                            |
| 83   | Stop Lever Link Nut (2) . . . . .  | - - - - -                | D02-418                            |
| ● 84   | Stop Lever Link Spring (2) . . . . .   | - - - - -                | D02-106                            |
| 85   | Throttle Handle (2) . . . . .  | MR-415                   | - - - - -                          |
| 86   | Throttle Chain (length as specified)   |                          |                                    |
|  | Standard . . . . .   | D02-B413                 | - - - - -                          |
|  | Spark-Resistant . . . . .  | D02-B1413                | - - - - -                          |
| 87   | S-Hook (2 for each Throttle Chain) . . . . .   | D02-421                  | - - - - -                          |
| 88   | Motor Case Cover Screw (6) (3/8"-16 thd. x 1 1/2") . . . . .   | 23-717                   | 23-717                             |
| 89   | 3/8" Lock Washer (18 for C6CA15, 15SR; C620C20, 20SR, 20LH, 20LR, 32, 32SR, 32LH, 32LR, 60 and 60SR; 21 for C620C100, 100SR, 100LH and 100LR; 22 for C6CA25) . . . . . | D02-321                  | D02-321                            |



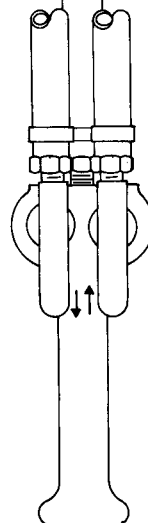
CONTROL HOSE  
 SPECIFY LENGTH 5 FT. SHORTER  
 THAN LIVE AIR HOSE

CONTROL HOSE  
 EXHAUST VALVE



CONTROL HOSE  
 5 FT. LONG

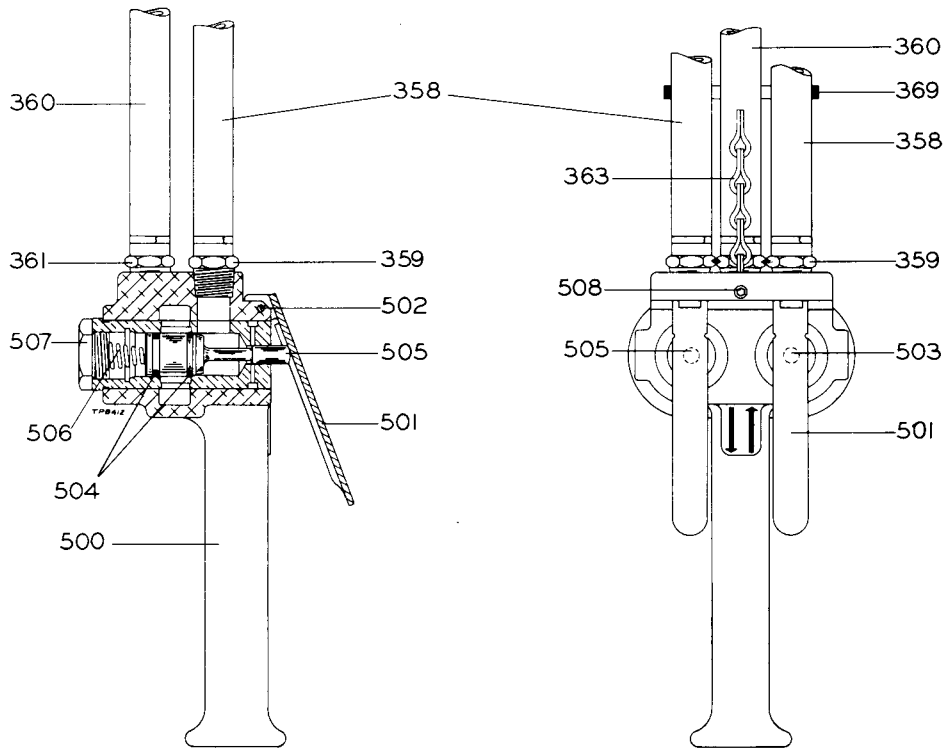
LIVE AIR HOSE  
 SPECIFY LENGTH EQUAL TO  
 LENGTH OF CONTROL DESIRED



TPB 350

**Hose and Exhaust Valve Arrangement  
 When Control Length Exceeds 20 Feet**

## PENDENT THROTTLE HANDLE PARTS



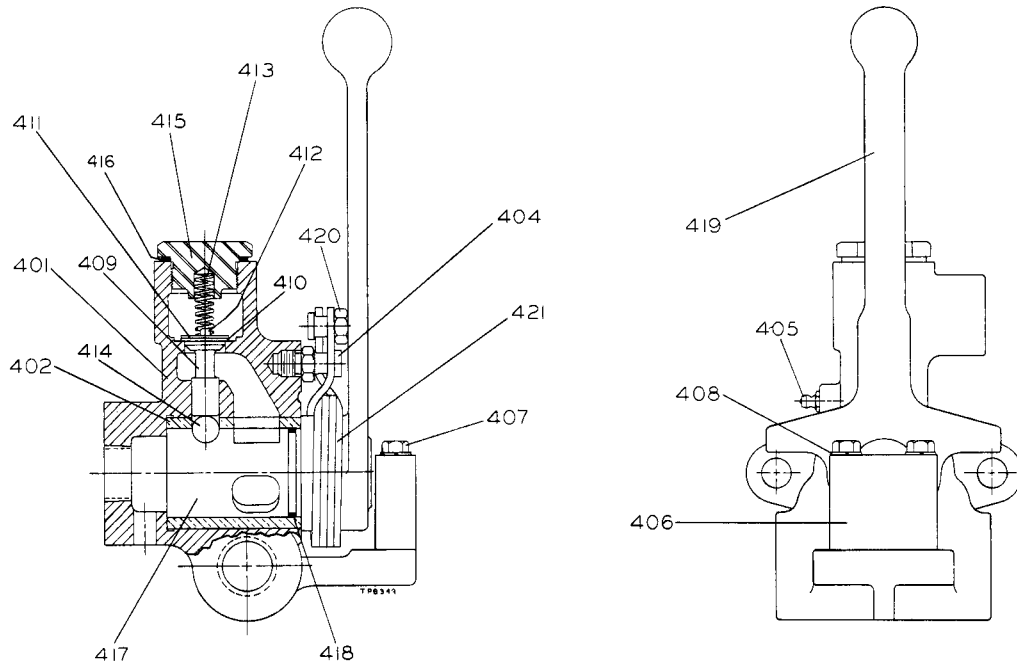
| ILLUSTRATION NUMBER<br>(Do not use for ordering) | PART NAME FOR ORDERING<br><br>(Parts indented after an item are included with that item)                | PART NUMBER FOR ORDERING |
|--|---|--------------------------|
| 358  | Control Hose Assembly (2) (length as specified) . . . . .   | C6H20A-AL930             |
| 359  | Hose Nipple (2 for each Hose) . . . . .   | C6H20A-14                |
| 360  | Live Air Hose Assembly (length as specified) . . . . .  | C6H20A-AL930             |
| 361  | Hose Nipple (2) . . . . .   | C6H20A-14                |
| 362  | Hose Union (3) . . . . .  | AAM-282                  |
| 363  | Pendent Throttle Chain (length as specified) (order Chain one inch shorter than Live Air Hose). . . . . | D02-B413                 |
| 364  | S-Hook . . . . .  | D01-221                  |
| 365  | Pendent Throttle Chain Screw . . . . .  | D02-506                  |
| 366  | Chain Screw Lock Washer . . . . .   | D02-321                  |
| 367  | 3/8" Plain Washer . . . . .   | D02-419                  |
| 368  | Pendent Throttle Inlet Nipple (3) . . . . .   | AAM-286                  |
| 369  | Hose Binder (3) . . . . .   | D10-927                  |
| ○ 370  | Control Hose Exhaust Valve (2) . . . . .  | C6H20A-939               |
| 500  | Pendent Throttle Handle Assembly . . . . .  | C6H20A-A169              |
| 501  | Pendent Throttle Lever (2) . . . . .  | C6H20A-273               |
| 502  | Throttle Lever Pin . . . . .  | C6H20A-281               |
| 503  | Pendent Throttle Raise Valve Assembly . . . . .   | C6H20A-A164              |
| 504  | Pendent Throttle Valve Seal Ring (2) . . . . .  | AF160-289                |
| 505  | Pendent Throttle Lower Valve Assembly . . . . .   | C6H20A-A165              |
| 504  | Pendent Throttle Valve Seal Ring (2) . . . . .  | AF160-289                |
| 506  | Pendent Throttle Valve Spring (2) . . . . .   | T01-308                  |
| 507  | Pendent Throttle Valve Cap (2) . . . . .  | C6H20A-180               |
| 508  | Chain Anchor Pin Lock Screw . . . . .   | H54U-561                 |
| *  | Throttle Chain Anchor Pin . . . . .   | R4-15                    |

\* Not illustrated.

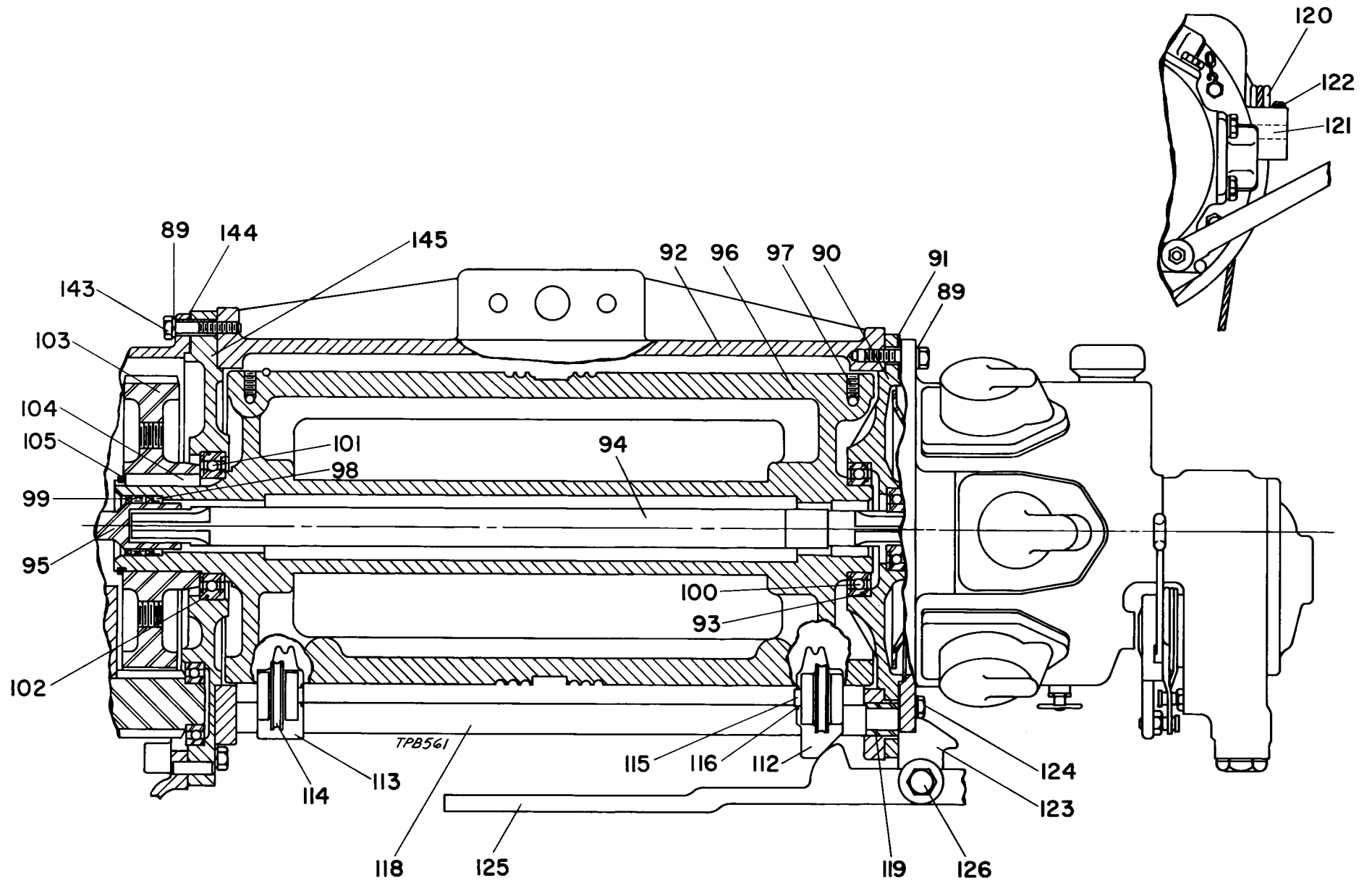
○ Required when control length exceeds 20 feet. Locate Valves 5 feet from Handle as shown in illustration.



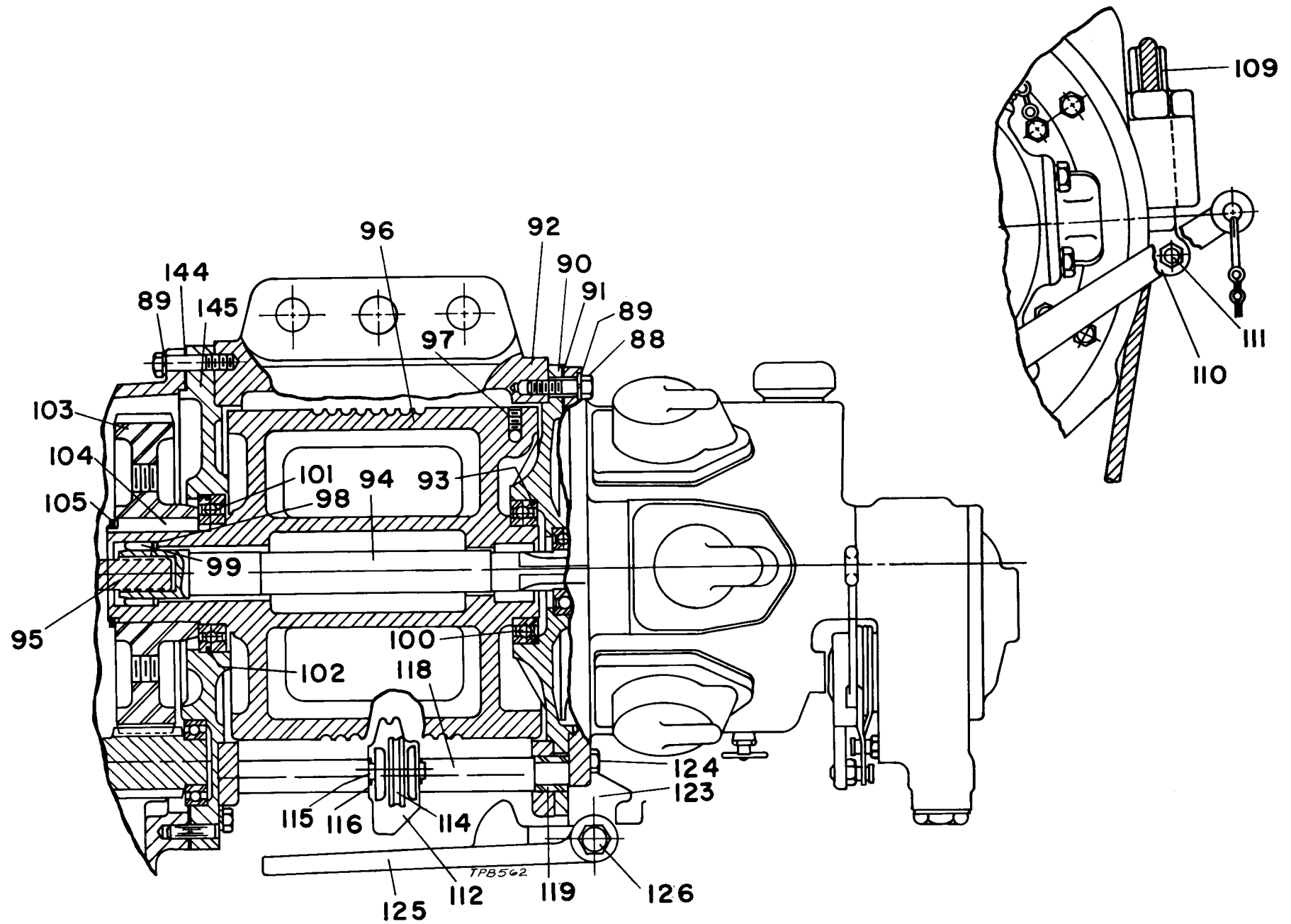
## REMOTE CONTROL PARTS



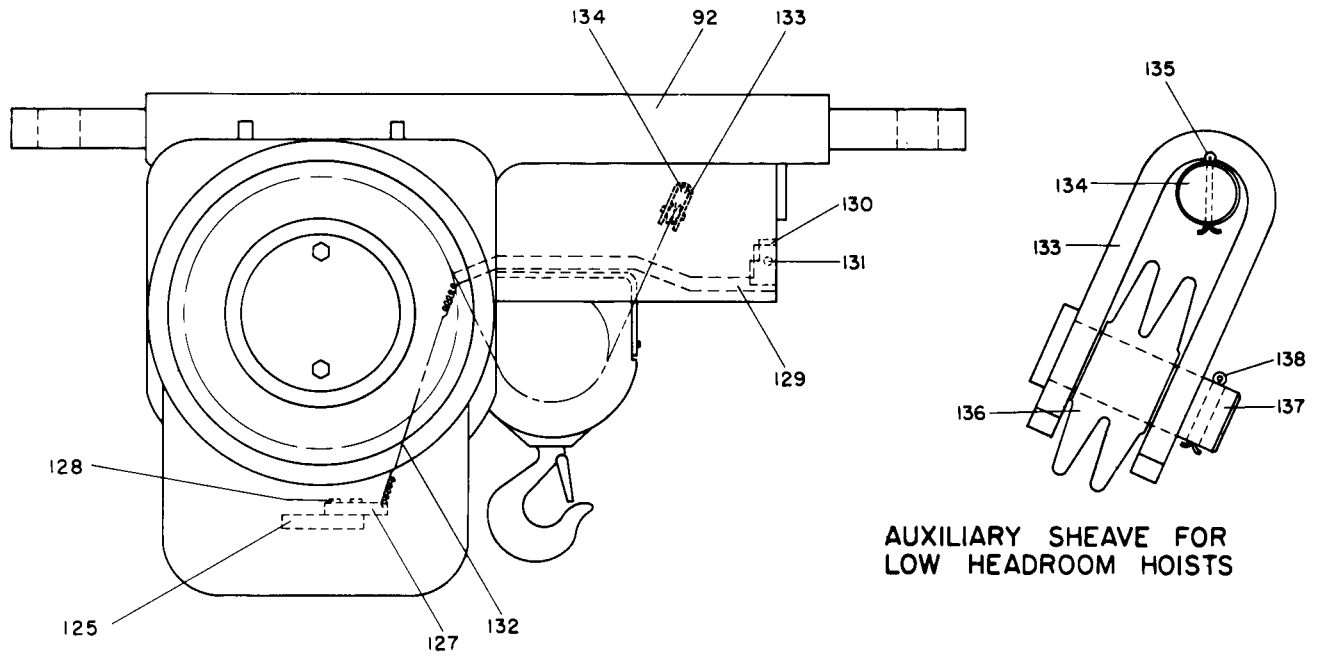
| ILLUSTRATION<br>NUMBER<br>(Do not use<br>for ordering) | PART NAME FOR ORDERING<br><br>(Parts indented after an item are included with that item) | PART<br>NUMBER<br>FOR<br>ORDERING |
|--|--|-----------------------------------|
|  | Remote Control Station Assembly . . . . .  | C6H20A-A800                       |
| 401  | Remote Control Valve Body Assembly . . . . .   | C6H20A-B800                       |
| 402  | Reverse Valve Bushing . . . . .  | C6H20A-945                        |
| 403  | Reverse Valve Bushing Key . . . . .  | D02-538                           |
| 404  | Throttle Lever Spring Stop Pin . . . . .   | D02-553                           |
| 405  | Grease Fitting . . . . .   | R1-188                            |
| 406  | Reverse Valve Retainer . . . . .   | D02-687                           |
| 407  | Retainer Screw (2) (5/16"-18 thd. x 2 1/4" long) . . . . .                               | G7-7A                             |
| 408  | 5/16" Lock Washer (2) . . . . .  | T11-58                            |
| 409  | Remote Control Throttle Valve Assembly . . . . .   | C6H20A-A940                       |
| ● 410  | Remote Control Throttle Valve Face . . . . .   | C6H20A-259                        |
| 411  | Valve Face Cap . . . . .   | 588-157                           |
| 412  | Face Cap Screw (No. 8-32 thd. x 3/8" long) . . . . .                                     | R10V-404                          |
| ● 413  | Throttle Valve Spring . . . . .  | B01-11                            |
| 414  | Throttle Valve Ball (1/2" dia. steel ball) . . . . .                                     | D10-280                           |
| 415  | Throttle Valve Cap . . . . .   | C6H20A-943                        |
| 416  | Valve Cap Gasket . . . . .   | D02-239                           |
| 417  | Remote Control Reverse Valve Assembly . . . . .  | C6H20A-A811                       |
| ● 418  | Reverse Valve Seal . . . . .   | C6H20A-948                        |
| 419  | Remote Control Throttle Lever Assembly . . . . .   | C6H20A-A815                       |
| 420  | Throttle Lever Spring Stop Pin . . . . .   | D02-553                           |
| ● 421  | Throttle Lever Spring . . . . .  | D02-412B                          |



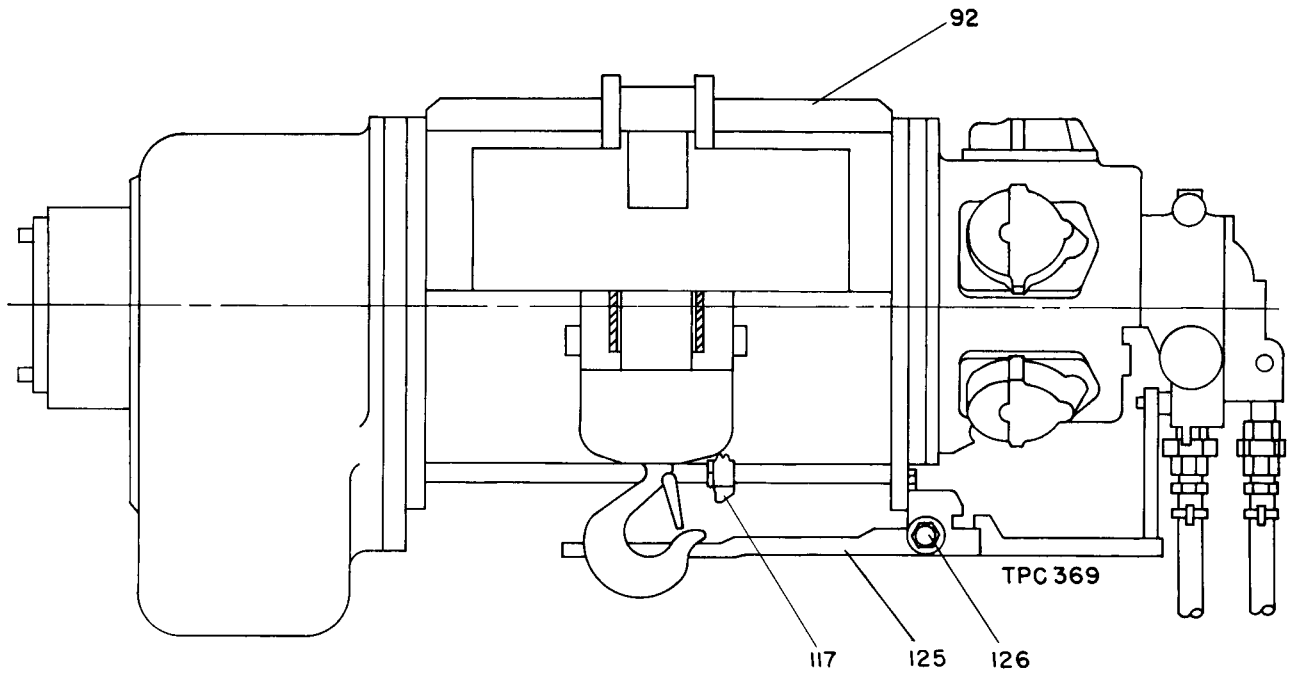
**Standard Headroom Hoist with Pull-Chain Throttle**  
**(Construction typical of Size C620C20 and C620C32 Hoists).**



Standard Headroom Hoist with Pull-Chain Throttle and Diaphragm Brake  
(Construction typical of Size C6CA15 and C620C40 Hoists).



**Gear Case Side View of Low Headroom Hoist**



**Front End View of Low Headroom Hoist  
with Pendent Throttle or Remote Control**

## MAIN HOIST PARTS

| ILLUSTRATION<br>NUMBER<br>(Do not use<br>for ordering) | PART NAME FOR ORDERING<br><br>(Parts indented after an item are included with that item)  | PART<br>NUMBER<br>FOR<br>ORDERING |
|--|---|-----------------------------------|
| 90   | Motor Case Cover . . . . .  | C6H20A-502                        |
| ● 91   | Motor Case Cover Gasket . . . . .   | C6H20A-592                        |
| 92   | Hoist Housing   |                                   |
|  | for Sizes C6CA15, 15SR and 25 . . . . .   | C6CA-300                          |
|  | for Sizes C620C20, 20SR, 40 and 40SR . . . . .  | C620C20-300                       |
|  | for Sizes C620C32 and 32SR. . . . .   | C620C32-300                       |
|  | for Sizes C620C60 and 60SR. . . . .   | C620C60-300                       |
|  | for Sizes C620C100 and 100SR . . . . .  | C620C100-300                      |
|  | for Sizes C620C20LH, 20LR, 100LH and 100LR . . . . .  | C620C20-L300                      |
|  | for Sizes C620C32LH and 32LR. . . . .   | C620C32-L300                      |
| ● 93   | Motor Case Cover Seal . . . . .   | C6H20A-104                        |
| 94   | Motor Shaft   |                                   |
|  | for Sizes C6CA15, 15SR and 25 with Diaphragm Brake only. . . . .  | C6CA-316                          |
|  | for Sizes C6CA15, 15SR and 25 with Dual Brake . . . . .   | C6CA-716                          |
|  | for Sizes C620C20, 20SR, 20LH, 20LR, 40, 40SR, 100, 100SR, 100LH<br>and 100LR with Diaphragm Brake only. . . . .                | C620C20-316                       |
|  | for Sizes C620C20, 20SR, 20LH, 20LR, 40, 40SR, 100, 100SR, 100LH<br>and 100LR with Dual Brake . . . . .                         | C6H20A22-316                      |
|  | for Sizes C620C32, 32SR, 32LH, 32LR, 60 and 60SR with Diaphragm<br>Brake only . . . . .   | C620C60-316                       |
|  | for Sizes C620C32, 32SR, 32LH, 32LR, 60 and 60SR with Dual Brake . . . . .  | C6H20A35-316                      |
| 95   | Motor Shaft Pinion  |                                   |
|  | for Hoists with Diaphragm Brake only. . . . .   | C6CA-319                          |
|  | for Hoists with Dual Brake . . . . .  | C6H20A-319                        |
| 96   | Rope Drum Assembly  |                                   |
|  | for Sizes C6CA15 and 15SR . . . . .   | C6CA15-A371                       |
|  | for Size C6CA25 . . . . .   | C6CA25-A324                       |
|  | for Sizes C620C20, 20SR, 20LH and 20LR . . . . .  | C6H20B20-A371                     |
|  | for Sizes C620C32, 32SR, 32LH and 32LR . . . . .  | C6H20B32-A371                     |
|  | for Sizes C620C40 and 40SR. . . . .   | C6H20A40-A371                     |
|  | for Sizes C620C60 and 60SR. . . . .   | C6H20A60-A371                     |
|  | for Sizes C620C100, 100SR, 100LH and 100LR . . . . .  | C6H20A100-A324                    |
| 97   | Rope Set Screw  |                                   |
|  | for Sizes C6CA15, 15SR, 25; C620C40, 40SR, 60 and 60SR (3); C620C20,<br>20SR, 20LH, 20LR, 32, 32SR, 32LH and 32LR (6) . . . . . | C6H20A28-381                      |
|  | for Sizes C620C100, 100SR, 100LH and 100LR (6) . . . . .  | C6H20A22-A381                     |
| ● 98   | Motor Shaft Seal . . . . .  | C6H20A-872                        |
| ● 99   | Motor Shaft Bearing (Torrington Roller Bearing No. JH-2212 or its equivalent). . . . .  | C6H20A-589                        |
| ● 100  | Drum Bearing, Motor End (New Departure No. Z4993L12-X1241B or its equivalent). . . . .  | C6H20A-467                        |
| ● 101  | Drum Bearing, Gear End (New Departure No. Z4993L14 or its equivalent). . . . .  | C6H20A-466                        |
| ● 102  | Gear Case Cover Seal . . . . .  | C6H20A-103                        |
| 103  | Drum Gear . . . . .   | C6H20A-357                        |
| 104  | Drum Gear Key . . . . .   | C6H20A-323                        |
| 105  | Drum Gear Retainer . . . . .  | C6H20A-119                        |
| 106  | Drum Guard  |                                   |
|  | for Size C6CA25 . . . . .   | C6CA25-298                        |
|  | for Sizes C620C100 and 100SR . . . . .  | C6H20A100-298                     |
| 107  | Drum Guard Cap Screw ( $\frac{3}{8}$ "-16 thd. x $\frac{7}{8}$ " ) (4 for Size C6CA25; 3 for C620C100<br>and 100SR) . . . . .   | D02-506                           |

**MAIN HOIST PARTS (Continued)**

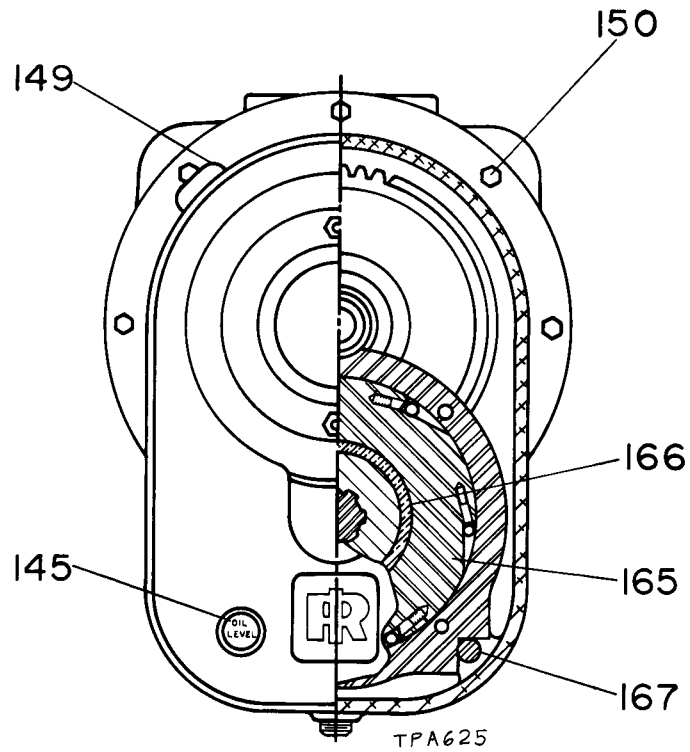
| ILLUSTRATION NUMBER<br>(Do not use for ordering) | PART NAME FOR ORDERING<br><br>(Parts indented after an item are included with that item)   | PART NUMBER FOR ORDERING   |
|--|--|--|
| 108  | Wire Rope<br>for Size C6CA15 . . . . .<br>for Size C6CA15SR . . . . .<br>for Size C6CA25 . . . . .<br>for Size C620C20 . . . . .<br>for Size C620C20SR . . . . .<br>for Size C620C20LH . . . . .<br>for Size C620C20LR . . . . .<br>for Size C620C32 . . . . .<br>for Size C620C32SR . . . . .<br>for Size C620C32LH . . . . .<br>for Size C620C32LR . . . . .<br>for Size C620C40 . . . . .<br>for Size C620C40SR . . . . .<br>for Size C620C60 . . . . .<br>for Size C620C60SR . . . . .<br>for Size C620C100 and 100LH . . . . .<br>for Size C620C100SR and 100LR . . . . . | C6CA15-372<br>C6CA15-R372<br>C6CA25-372<br>C6H20B20-372<br>C6H20B20-R372<br>C6H20B20-L372<br>C6H20B20-LR372<br>C6H20B32-372<br>C6H20B32-R372<br>C6H20B32-L372<br>C6H20B32-LR372<br>C6H20A40-372<br>C6H20A40-R372<br>C6H20A60-372<br>C6H20A60-R372<br>C6H20A100-372<br>C6H20A100-R372 |
| *  | Rope Clamp (for Sizes C6CA15, 15SR, 25; C620C40, 40SR, 60 and 60SR . . . . .)  | D02-375  |
| 109  | Rope Wedge<br>for Sizes C6CA15, 15SR, 25; C620C60 and 60SR . . . . .<br>for Sizes C620C40 and 40SR . . . . .   | C6CA-373<br>C620C-373  |
| 110  | Wedge Block Rope Anchor (for Sizes C6CA15, 15SR, 25; C620C40, 40SR, 60 and 60SR) . . . . .   | C6H20A-374   |
| 111  | $\frac{3}{8}$ " Nut (for Sizes C6CA15, 15SR, 25; C620C40, 40SR, 60 and 60SR) . . . . .   | D02-418  |
| 112  | Rope Guide, Motor End<br>for Sizes C6CA15, 15SR; C620C20, 20SR, 32 and 32SR . . . . .<br>for Sizes C620C40, 40SR, 60 and 60SR . . . . .  | C6H20B20-R790<br>C620C40-R790  |
| 113  | Rope Guide, Gear End (for Sizes C620C20, 20SR, 32 and 32SR) . . . . .  | C6H20B20-R789  |
| 114  | Rope Guide Roller<br>for Sizes C6CA15, 15SR (1); C620C20, 20SR, 32 and 32SR (2) . . . . .<br>for Sizes C620C40, 40SR, 60 and 60SR . . . . .  | C6H20A-792<br>C640A-792  |
| 115  | Guide Roller Pin<br>for Sizes C6CA15, 15SR (1); C620C20, 20SR, 32 and 32SR (2) . . . . .<br>for Sizes C620C40, 40SR, 60 and 60SR . . . . .   | C6H20A-793<br>C640A-793  |
| 116  | Roller Pin Cotter (2 for Sizes C6CA15, 15SR; 4 for Sizes C620C20, 20SR, 32 and 32SR) . . . . .   | D02-524  |
| *  | Roller Pin Retainer (for Sizes C620C40, 40SR, 60 and 60SR) (2) . . . . .   | C640A-100  |
| 117  | Stop Cam (for Sizes C620C20LH, 20LR, 32LH and 32LR) . . . . .  | C6H20B20-LR771   |
| 118  | Guide Rod (2)<br>for Sizes C6CA15 and 15SR . . . . .<br>for Sizes C620C20, 20SR, 20LH, 20LR, 40 and 40SR . . . . .<br>for Sizes C620C32, 32SR, 32LH, 32LR, 60 and 60SR . . . . .   | C6CA15-R791<br>C6H20A22-R791<br>C6H20A35-R791  |
| 119  | Guide Rod Sleeve (used with grooved Rope Drums) . . . . .  | C6H20A-788   |
| 120  | Equalizer Sheave (for Sizes C620C20, 20SR, 32, 32SR, 100 and 100SR) . . . . .  | C6H20B-638   |
| 121  | Equalizer Sheave Shaft<br>for Sizes C620C20, 20SR, 32, 32SR, 100 and 100SR . . . . .   | C6H20A-641   |
| 122  | Equalizer Shaft Set Screw (for Sizes C620C20, 20SR, 32, 32SR, 100 and 100SR)<br>( $\frac{5}{16}$ "-16 thd. x $\frac{3}{4}$ "') . . . . .   | C6H20A-643   |
| 123  | Stop Lever Bracket . . . . .   | C6H20A-905   |
| 124  | Stop Lever Bracket Screw (2) ( $\frac{3}{8}$ "-16 thd. x $1\frac{1}{2}$ "') . . . . .  | 23-717   |

\* Not illustrated.

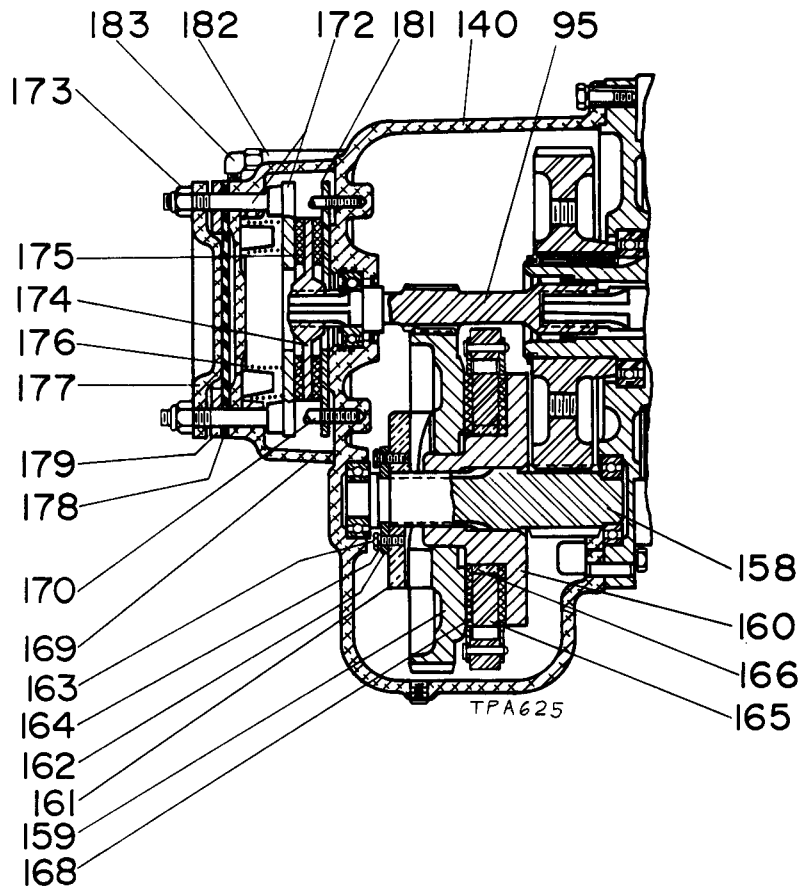
**MAIN HOIST PARTS (Continued)**

| ILLUSTRATION NUMBER<br>(Do not use for ordering) | PART NAME FOR ORDERING<br>(Parts indented after an item are included with that item)  | PART NUMBER FOR ORDERING   |
|--|---|--|
| 125  | Lower Safety Stop Lever<br>for Sizes C6CA15 and 25 with Pull Chain Throttle<br>Standard . . . . .<br>Spark-Resistant . . . . .<br>for Sizes C6CA15 and 25 with Pendent Throttle or Remote Control<br>Standard . . . . .<br>Spark-Resistant . . . . .<br>for Sizes C620C20 and 100 with Pull Chain Throttle<br>Standard . . . . .<br>Spark-Resistant . . . . .<br>for Sizes C620C20 and 100 with Pendent Throttle or Remote Control<br>Standard . . . . .<br>Spark-Resistant . . . . .<br>for Sizes C620C32 and 40 with Pull Chain Throttle<br>Standard . . . . .<br>Spark-Resistant . . . . .<br>for Sizes C620C32 and 40 with Pendent Throttle or Remote Control<br>Standard . . . . .<br>Spark-Resistant . . . . .<br>for Size C620C60 with Pull Chain Throttle<br>Standard . . . . .<br>Spark-Resistant . . . . .<br>for Size C620C60 with Pendent Throttle or Remote Control<br>Standard . . . . .<br>Spark-Resistant . . . . .<br>for Sizes C620C20LH and 100LH with Pull Chain Throttle<br>Standard . . . . .<br>Spark-Resistant . . . . .<br>for Sizes C620C20LH and 100LH with Pendent Throttle or Remote Control<br>Standard . . . . .<br>Spark-Resistant . . . . .<br>for Size C620C32LH with Pull Chain Throttle<br>Standard . . . . .<br>Spark-Resistant . . . . .<br>for Size C620C32LH with Pendent Throttle or Remote Control<br>Standard . . . . .<br>Spark-Resistant . . . . . | C6CA-422<br>C6H20A22-R422<br>C6CA-222<br>C6H20A22-R222<br>C6H20A22-422<br>C6H20A22-R422<br>C6H20A22-222<br>C6H20A22-R222<br>C6H20A35-422<br>C6H20A35-R422<br>C6H20A35-222<br>C6H20A35-R222<br>C6H20A60-422<br>C6H20A60-R422<br>C6H20A60-222<br>C6H20A60-R222<br>C620C20-L422<br>C620C20-LR422<br>C620C20-L222<br>C620C20-LR222<br>C620C32-L422<br>C620C32-LR422<br>C620C32-L222<br>C620C32-LR222 |
| 126  | Stop Lever Bolt<br>Standard . . . . .<br>Spark-Resistant . . . . .  | D10-354A<br>D02-1423<br>D02-904  |
| *  | Stop Lever Bolt Nut (1/2"-13 thd., self-locking) . . . . .  |  |
| 127  | Stop Lever Plate (for Sizes C620C20LH, 32LH and 100LH)<br>Standard . . . . .<br>Spark-Resistant . . . . .   | C620C-L226<br>C620C-LR226  |
| 128  | Stop Lever Plate Bolt (for Sizes C620C20LH, 20LR, 32LH, 32LR, 100LH and 100LR) (2) . . . . .  | B8-240   |
| *  | 3/16" Pin (for Sizes C620C20LH, 20LR, 32LH, 32LR, 100LH and 100LR) (1 each for Upper Stop Lever and Lower Stop Lever Plate) . . . . .   | 5BM-278  |
| 129  | Upper Stop Lever (for Sizes C620C20LH, 32LH and 100LH)<br>Standard . . . . .<br>Spark-Resistant . . . . .   | C620C20-622<br>C620C20-R622  |
| 130  | Stop Lever Mounting Block (for Sizes C620C20LH, 20LR, 32LH, 32LR, 100LH and 100LR) . . . . .  | C620C20-L159<br>B8-240   |
| *  | Mounting Block Bolt (2) . . . . .   | T11-58   |
| *  | 5/16" Lock Washer (2) . . . . .   | D02-906  |
| 131  | Lever Bolt . . . . .  | WF171-13   |
| *  | Lever Bolt Nut . . . . .  |  |
| 132  | Lever Chain<br>Standard . . . . .<br>Spark-Resistant . . . . .  | C620C-L773<br>C620C-LR773  |
| 133  | Auxiliary Sheave Yoke . . . . .   | C620C-639  |
| 134  | Auxiliary Yoke Pin . . . . .  | C620C-608  |
| 135  | Yoke Pin Cotter (2) . . . . .   | C6H20A-146   |
| 136  | Auxiliary Sheave . . . . .  | C6H20B-638   |
| 137  | Auxiliary Sheave Shaft . . . . .  | C620C-641  |
| 138  | Auxiliary Shaft Cotter . . . . .  | C6H20A-146   |

\* Not illustrated.

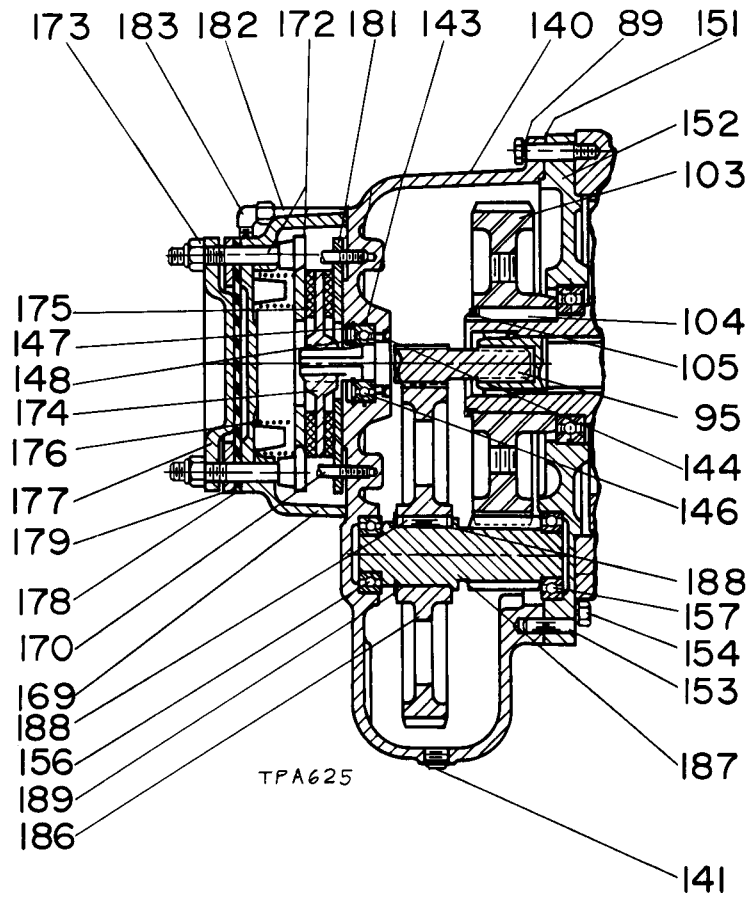


End View of Gear Case and Brake



Gear Case End of Hoist Equipped with Dual Brake





**Gear Case End of Hoist Equipped with Diaphragm Brake**

## GEAR CASE AND BRAKE PARTS

| ILLUSTRATION<br>NUMBER<br>(Do not use<br>for ordering) | PART NAME FOR ORDERING<br><br>(Parts indented after an item are included with that item) | PART<br>NUMBER<br>FOR<br>ORDERING |
|--|--|-----------------------------------|
| 140  | Gear Case Assembly<br>for Hoists with Diaphragm Brake only. . . . .                      | C6CA-A353                         |
|  | for Hoists with Dual Brake . . . . .   | C6H20A-A353                       |
| 141  | 1/4" Pipe Plug . . . . .   | R0H-377                           |
| *  | 1/2" Pipe Plug (for C6H20A-A353 Gear Case Assembly) . . . . .                            | C6H20A-79                         |
| ● 143  | Pinion Outer Bearing Seal. . . . .   | R18-311                           |
| ● 144  | Pinion Outer Seal . . . . .  | C6H20A-271                        |
| 145  | Oil Level Gauge . . . . .  | C6H20A-16                         |
| ● 146  | Pinion Outer Bearing (AFBMA No. 25BC02JDD) . . . . .                                     | AM-318                            |
| 147  | Pinion Outer Bearing Retainer. . . . .   | C6H20A-48                         |
| 148  | Pinion Retainer . . . . .  | C6H20A-6                          |
| 149  | Gear Case Vent Cap. . . . .  | C6H20A-19                         |
| 150  | Gear Case Screw (7) (3/8"-16 thd. x 2") . . . . .  | D02-906                           |
| 151  | Gear Case Gasket . . . . .   | C6H20A-931                        |
| 152  | Gear Case Cover Assembly . . . . .   | C6H20A-A352                       |
| 153  | Gear Case Cover Dowel . . . . .  | HU-527                            |
| 154  | Gear Case Cover Screw (2) (3/8"-16 thd. x 1 3/8") . . . . .                              | D02-312                           |
| *  | Cover Retaining Screw (2) . . . . .  | 21-702                            |
| 156  | Intermediate Shaft Outer Bearing (AFBMA No. 25BC02) . . . . .                            | G7-24                             |
| 157  | Intermediate Shaft Inner Bearing (AFBMA No. 30BC02) . . . . .                            | TA-22                             |
| 158  | Load Brake Intermediate Shaft . . . . .  | C6H20A-83                         |
| 159  | Load Brake Gear . . . . .  | C6H20A-82                         |
| 160  | Load Brake Flange . . . . .  | C6H20A-84                         |
| 161  | Load Brake Cam. . . . .  | C6H20A-88                         |
| 162  | Cam Retainer (2) . . . . .   | C6H20A-89                         |
| 163  | Cam Retainer Screw (4) (1/4"-20 thd. x 3/4") . . . . .                                   | R3-7                              |
| 164  | 1/4" Lock Washer (4) . . . . .   | L01-67                            |
| ● 165  | Brake Ratchet Assembly . . . . .   | C6H20A-A86                        |
| 166  | Brake Ratchet Bushing . . . . .  | C6H20A-87                         |
| 167  | Brake Ratchet Stop . . . . .   | C6H20A-81                         |
| 168  | Friction Disc (2). . . . .   | C6H20A-85                         |
| 169  | Brake Housing . . . . .  | C6H20A-346                        |
| 170  | Brake Housing Cap Screw (4) (5/16"-18 thd. x 3 3/4") . . . . .                           | C6H20A-344                        |
| *  | 5/16" Lock Washer (8) . . . . .  | T11-58                            |
| 172  | Brake Plate. . . . .   | C6H20A-389                        |
| 173  | Brake Adjusting Nut (2) (1/2"-20 thd., self-locking) . . . . .                           | FM-544                            |
| ● 174  | Brake Disc Assembly . . . . .  | C6H20A-A388                       |
| 175  | Brake Facing Assembly (2) . . . . .  | C6H20A-A385                       |

Mechanical Brake Parts

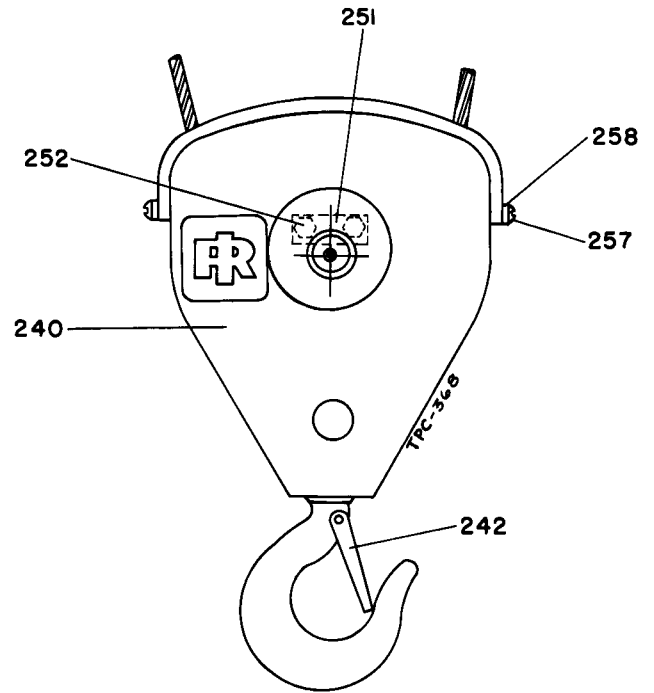
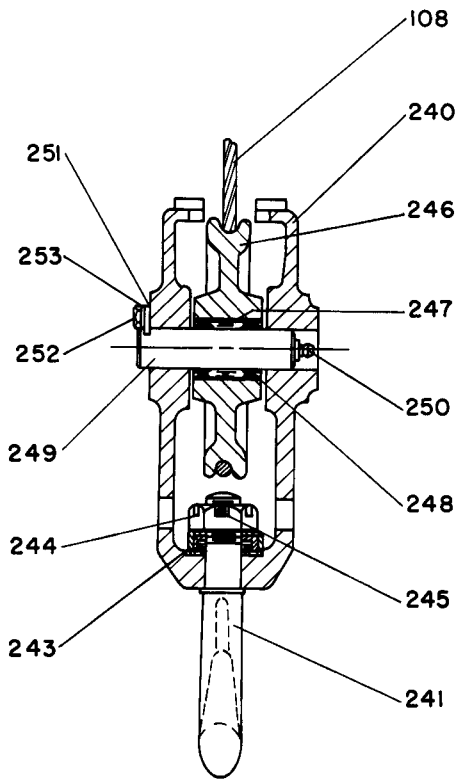
\* Not illustrated.

**GEAR CASE AND BRAKE PARTS (Continued)**

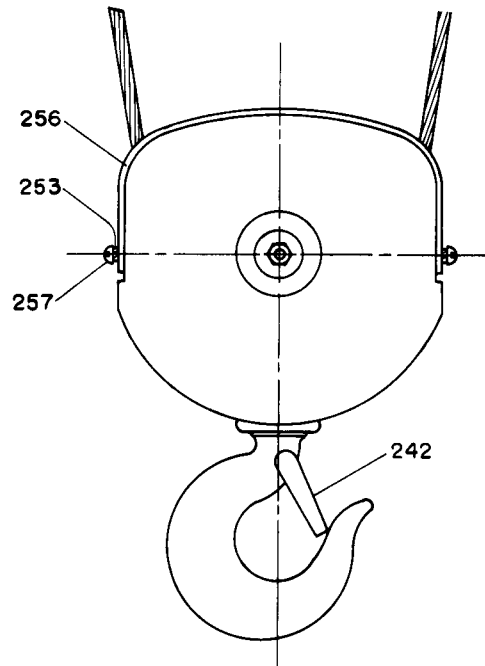
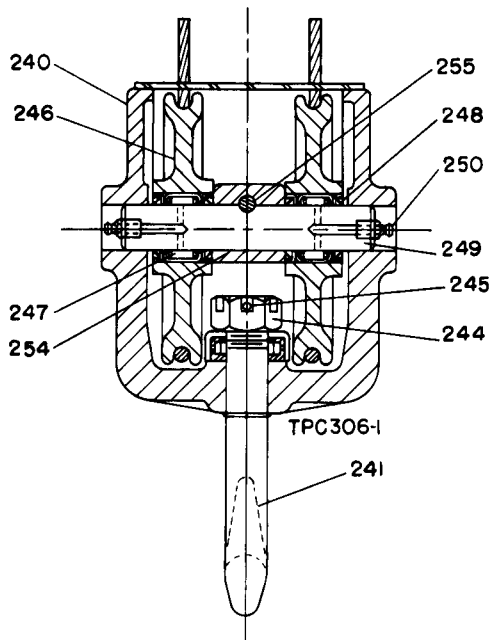
| ILLUSTRATION NUMBER<br>(Do not use for ordering) | PART NAME FOR ORDERING<br><br>(Parts indented after an item are included with that item)                                | PART NUMBER FOR ORDERING |
|--|---|--------------------------|
| ● 176  | Brake Spring (4)<br>for Hoists with Diaphragm Brake only. . . . .   | C6H20A-393               |
|  | for Hoists with Dual Brake . . . . .  | 5H0-37                   |
| 177  | Brake Plunger . . . . .   | C6H20A-391               |
| ● 178  | Brake Diaphragm . . . . .   | C6H20A-390               |
| 179  | Brake Diaphragm Ring . . . . .  | C6H20A-395               |
| *  | Brake Diaphragm Screw (4) (5/16"-18 thd. x 1") . . . . .  | B8-240                   |
| 181  | Brake Thrust Ring . . . . .   | C6H20A-397               |
| 182  | Brake Pipe<br>for Sizes C6CA15, 15SR and 25 with Pull Chain Throttle (36" - 914 mm long) . . . . .                      | C6CA-401                 |
|  | for Sizes C6CA15, 15SR and 25 with Pendent Throttle or Remote Control (33" - 838 mm long). . . . .                      | C6CA-201                 |
|  | for Sizes C620C20, 20SR, 40, 40SR, 100 and 100SR with Pull Chain Throttle (46" - 1168 mm long). . . . .                 | C6H20A22-401             |
|  | for Sizes C620C20, 20SR, 40, 40SR, 100 and 100SR with Pendent Throttle or Remote Control (43" - 1092 mm long) . . . . . | C6H20A22-201             |
|  | for Sizes C620C32, 32SR, 60 and 60SR with Pull Chain Throttle (54" - 1372 mm long) . . . . .                            | C6H20A35-401             |
|  | for Sizes C620C32, 32SR, 60 and 60SR with Pendent Throttle or Remote Control (51" - 1295 mm long) . . . . .             | C6H20A35-201             |
|  | for Sizes C620C20LH, 20LR, 100LH and 100LR with Pull Chain Throttle (60" - 1524 mm long). . . . .                       | C620C20-L401             |
|  | for Sizes C620C20LH, 20LR, 100LH and 100LR with Pendent Throttle or Remote Control (60" - 1524 mm long) . . . . .       | C620C20-L201             |
|  | for Sizes C620C32LH and 32LR with Pull Chain Throttle (60" - 1524 mm long) . . . . .                                    | C620C32-L401             |
|  | for Sizes C620C32LH and 32LR with Pendent Throttle or Remote Control (60" - 1524 mm long) . . . . .                     | C620C32-L201             |
| 183  | Brake Pipe Ell (2) . . . . .  | D02-400                  |
| *  | Brake Pipe Strap (for Standard Headroom Hoists) . . . . .   | C6H20A-727               |
| *  | Brake Pipe Strap Screw (3/8"-16 thd. x 1/2") . . . . .  | DLC-752                  |
| ★ 186  | Intermediate Gear. . . . .  | C6H20A-364               |
| ★ 187  | Intermediate Gear Shaft . . . . .   | C6CA-358                 |
| ★ 188  | Intermediate Gear Key . . . . .   | T11SH-386                |
| ★ 189  | Intermediate Gear Retaining Ring . . . . .  | K6U-362                  |

\* Not illustrated.

★ Parts marked with a star (★) are not used on Hoists with Dual Brake.



**Single Sheave Block and Hook Assembly**



**Double Sheave Block and Hook Assembly**

## SHEAVE BLOCK AND BOTTOM HOOK ASSEMBLY PARTS

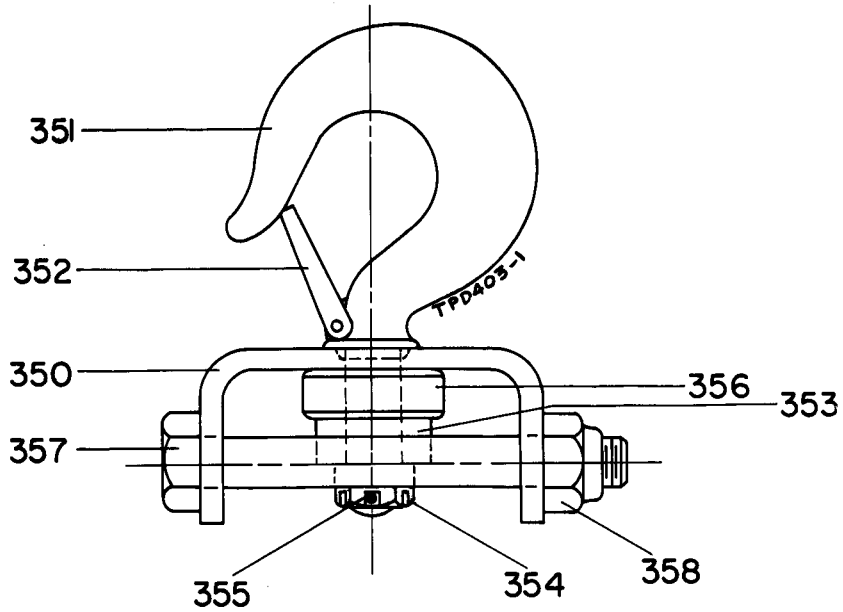
| ILLUSTRATION<br>NUMBER<br>(Do not use<br>for ordering) | PART NAME FOR ORDERING<br><br>(Parts indented after an item are included with that item) | PART<br>NUMBER<br>FOR<br>ORDERING |
|--|--|-----------------------------------|
|  | Sheave Block and Hook Assembly<br>with Safety Hook for Single Sheave Type                |                                   |
|  | Standard . . . . .   | C6H20A28-AS378                    |
|  | Spark-Resistant . . . . .  | C6H20A28-ASR378                   |
|  | Bullard-Burnham Safety Hook . . . . .  | C6H20A28-ABB378                   |
|  | with Safety Hook for Double Sheave Type  |                                   |
|  | Standard . . . . .   | C6H20A22-AS378                    |
|  | Spark-Resistant . . . . .  | C6H20A22-ASR378                   |
|  | Bullard-Burnham Safety Hook . . . . .  | C6H20A22-ABB378                   |
| 240  | Sheave Block<br>for Single Sheave Type   |                                   |
|  | Standard . . . . .   | C6H20A28-378                      |
|  | Spark-Resistant . . . . .  | C6H20A28-R378                     |
|  | for Double Sheave Type   |                                   |
|  | Standard . . . . .   | C6H20A22-378                      |
|  | Spark-Resistant . . . . .  | C6H20A22-R378                     |
| ● 241  | Safety Hook Assembly   |                                   |
|  | Standard . . . . .   | C6H20A-AS377                      |
|  | Spark-Resistant . . . . .  | C6H20A-ASR377                     |
|  | Bullard-Burnham Safety Hook . . . . .  | C6H20A-ABB377                     |
| ● 242  | Hook Latch Kit (individual parts not sold separately)                                    |                                   |
|  | Standard . . . . .   | D01-S123                          |
|  | Spark-Resistant . . . . .  | D02-S4055                         |
| 243  | Hook Bearing   |                                   |
|  | Standard . . . . .   | D01-379A                          |
|  | Spark-Resistant . . . . .  | D02-379A                          |
| 244  | Slotted Nut  |                                   |
|  | Standard . . . . .   | C620C40-305                       |
|  | Spark-Resistant . . . . .  | D02-350A                          |
| 245  | Roll Pin   |                                   |
|  | Standard . . . . .   | 20QDM-330                         |
|  | Spark-Resistant . . . . .  | D02-1376                          |
| 246  | Sheave Assembly  |                                   |
|  | for Size C6CA25 . . . . .  | C6CA25-A380                       |
|  | for Sizes C6CA15, C620C40 and 60   |                                   |
|  | Standard . . . . .   | C6H20A28-A380                     |
|  | Spark-Resistant . . . . .  | C6H20A28-AR380                    |
|  | for other Sizes  |                                   |
|  | Standard . . . . .   | C6H20B20-A380                     |
|  | Spark-Resistant . . . . .  | C6H20B20-AR380                    |
| ● 247  | Sheave Bearing   |                                   |
|  | for Single Sheave Type (Torrington No. HF-182616 or its equivalent) . . . .              | C6H20A28-753                      |
|  | for Double Sheave Type (Torrington No. JH-1412 or its equivalent) . . . .                | C6H20A22-753                      |
| ● 248  | Sheave Bearing Seal  |                                   |
|  | for Single Sheave Type (2) . . . . .   | C6H20A28-754                      |
|  | for Double Sheave Type (4) . . . . .   | C6H20A22-754                      |
| 249  | Sheave Shaft Assembly  |                                   |
|  | for Single Sheave Type   |                                   |
|  | Standard . . . . .   | C6H20A28-A382                     |
|  | Spark-Resistant . . . . .  | C6H20A28-R382                     |
|  | for Double Sheave Type . . . . .   | C6H20A22-A382                     |
| 250  | Grease Fitting (1 for Single Sheave Type; 2 for Double Sheave Type). . . . .             | 23-188                            |

**SHEAVE BLOCK AND BOTTOM HOOK ASSEMBLY PARTS (Continued)**

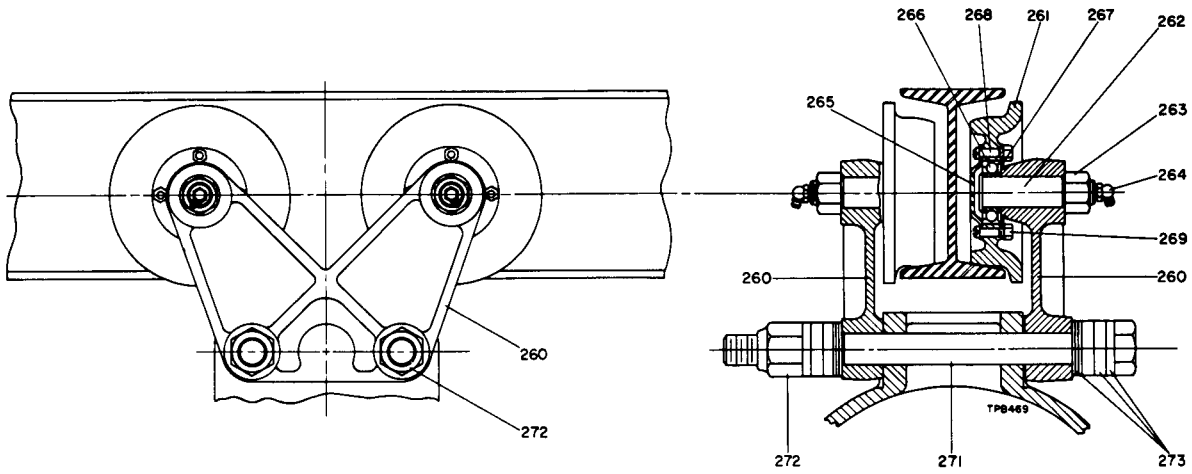
| <b>ILLUSTRATION<br/>NUMBER<br/>(Do not use<br/>for ordering)</b> | <b>PART NAME FOR ORDERING<br/><br/>(Parts indented after an item are included with that item)</b>  | <b>PART<br/>NUMBER<br/>FOR<br/>ORDERING</b>                |
|--|--|--|
| 251  | Sheave Shaft Lock (for Single Sheave Type)<br>Standard . . . . .<br>Spark-Resistant . . . . .  | MR20-383<br>C6H20A28-R383                                  |
| 252  | Sheave Shaft Lock Screw (for Single Sheave Type)<br>Standard . . . . .<br>Spark-Resistant . . . . .  | JC3350-103<br>C6H20A-R937                                  |
| 253  | 1/4" Lock Washer (2) . . . . .   | L01-67   |
| 254  | Sheave Shaft Anchor (for Double Sheave Type) . . . . .   | C6H20A-448   |
| 255  | Sheave Shaft Anchor Bolt (for Double Sheave Type) . . . . .  | DRC-643  |
| *  | Sheave Shaft Anchor Bolt Nut (for Double Sheave Type) . . . . .  | D02-418  |
| *  | 3/8" Lock Washer (for Double Sheave Type) . . . . .  | D02-321  |
| 256  | Sheave Block Cover<br>for Single Sheave Type<br>Standard . . . . .<br>Spark-Resistant . . . . .<br>for Double Sheave Type<br>Standard . . . . .<br>Spark-Resistant . . . . . | C6H20A28-441<br>C6H20A28-R441<br>C6H20A-441<br>C6H20A-R441 |
| 257  | Sheave Block Cover Screw (4 for Single Sheave Type; 2 for Double Sheave Type)<br>Standard . . . . .<br>Spark-Resistant . . . . .   | J-376<br>C6H20A-R937                                       |
| 258  | Cover Screw Washer<br>Standard . . . . .<br>Spark-Resistant . . . . .  | L01-67<br>P225-67  |

\* Not illustrated.

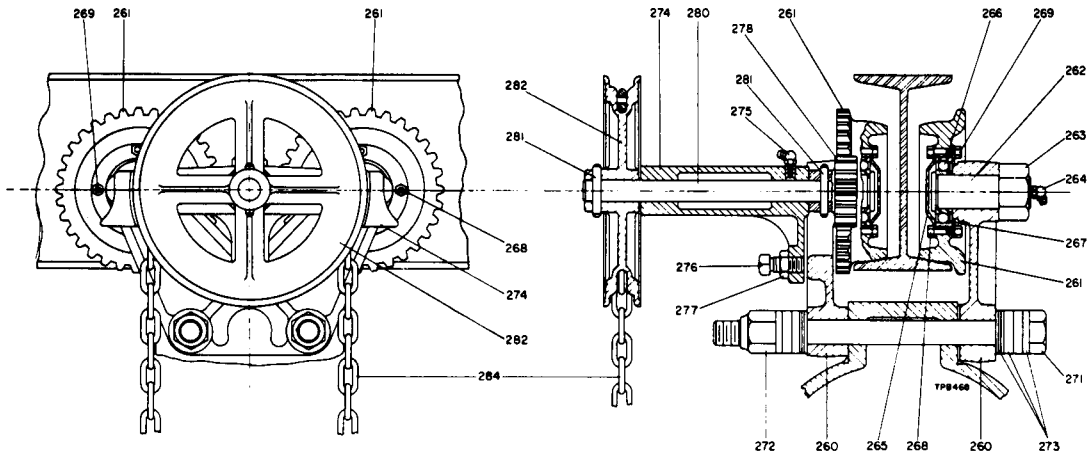
## SAFETY TOP HOOK AND YOKE ASSEMBLY



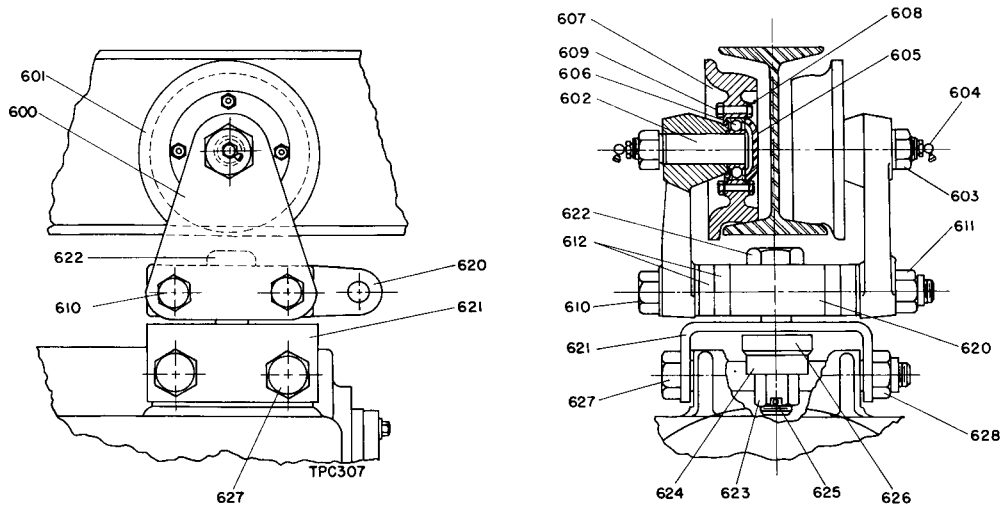
| ILLUSTRATION NUMBER<br>(Do not use for ordering) | PART NAME FOR ORDERING<br><br>(Parts indented after an item are included with that item) | PART NUMBER FOR ORDERING |
|--|--|--------------------------|
|  | Safety Top Hook and Yoke Assembly (1 for C6CA15, 25; C620C20 and 32; 2 for C620C60)      |                          |
|  | Standard . . . . .   | C6CA-AS590               |
|  | Spark-Resistant . . . . .  | C6CA-ASR590              |
| 350  | Top Hook Yoke  |                          |
|  | Standard . . . . .   | C6CA-590                 |
|  | Spark-Resistant . . . . .  | C6CA-R590                |
| ● 351  | Safety Top Hook Assembly   |                          |
|  | Standard . . . . .   | C6H20A-AS377             |
|  | Spark-Resistant . . . . .  | C6H20A-ASR377            |
| ● 352  | Hook Latch Kit (parts not sold separately)   |                          |
|  | Standard . . . . .   | D01-S123                 |
|  | Spark-Resistant . . . . .  | D02-S4055                |
| 353  | Hook Bearing   |                          |
|  | Standard . . . . .   | D01-379A                 |
|  | Spark-Resistant . . . . .  | D02-379A                 |
| 354  | Slotted Nut  |                          |
|  | Standard . . . . .   | C620C40-305              |
|  | Spark-Resistant . . . . .  | D02-305A                 |
| 355  | Roll Pin   |                          |
|  | Standard . . . . .   | 20QDM-330                |
|  | Spark-Resistant . . . . .  | D02-1376                 |
| 356  | Top Hook Spacer  |                          |
|  | Standard . . . . .   | C6H20A-591               |
|  | Spark-Resistant . . . . .  | C6H20A-R591              |
| 357  | Yoke Bolt (2 for C6CA15, 15SR, 25; C620C20, 20SR, 32, 32SR; 4 for C620C60 and 60SR)      |                          |
|  |  | D02-339                  |
| 358  | Yoke Bolt Nut . . . . .  | D02-440B                 |



**Plain Trolley**



**Hand Chain Driven Trolley**



**Auxiliary Trolley with Swivel Mounting  
(used on Size C620C60 Hoist)**



## TROLLEY ASSEMBLIES FOR STANDARD HEADROOM HOISTS

| PART NAME FOR ORDERING  | PART NUMBER FOR ORDERING |
|---|--------------------------|
| <b>Plain Trolley Assembly</b>   |                          |
| To operate on 5" (127 mm) or 6" (152 mm) I-Beam, 3.00" (76 mm) or 3.33" (85 mm) flange width    |                          |
| for Size C620C60 . . . . .  | C620C60-A700-5           |
| for Size C620C60SR. . . . .   | C602C60-AR700-5          |
| for all other Standard Sizes. . . . .   | C6CA-A430-5              |
| for all other Spark-Resistant Sizes. . . . .  | C6CA-AR430-5             |
| To operate on 6" (152 mm) to 18" (457 mm) I-Beam, 3.33" (85 mm) to 6.00" (152 mm) flange width  |                          |
| for Size C620C60 . . . . .  | C620C60-A700             |
| for Size C620C60SR. . . . .   | C620C60-AR700            |
| for all other Standard Sizes. . . . .   | C6CA-A430                |
| for all other Spark-Resistant Sizes. . . . .  | C6CA-AR430               |
| To operate on Flat Tread Monorail, 3.25" (83 mm) to 4.50" (114 mm) flange width                 |                          |
| for Size C620C60 . . . . .  | C620C60-AT700            |
| for Size C620C60SR. . . . .   | C620C60-ATR700           |
| for all other Standard Sizes. . . . .   | C6CA-AT430               |
| for all other Spark-Resistant Sizes. . . . .  | C6CA-ATR430              |
| <b>Hand Chain Trolley Assembly</b>  |                          |
| To operate on 8" (203 mm) to 18" (457 mm) I-Beam, 4.00" (102 mm) to 6.00" (152 mm) flange width |                          |
| Standard . . . . .  | C6CA-A471                |
| Spark-Resistant . . . . .   | C6CA-AR471               |
| To operate on Flat Tread Monorail, 3.25" (83 mm) to 4.50" (114 mm) flange width                 |                          |
| Standard . . . . .  | C6CA-AT471               |
| Spark-Resistant . . . . .   | C6CA-ATR471              |

When ordering a Trolley Assembly or Auxiliary Trolley Assembly, always specify the flange width of the I-Beam or Monorail on which the Trolley is to operate.

## TROLLEY PARTS FOR STANDARD HEADROOM HOISTS

| ILLUS. NUMBER<br>(Do not use for ordering) | PART NAME FOR ORDERING<br><br>(Parts indented after an item are included with that item)   | PART NUMBER FOR ORDERING  |  |  |
|--|--|---|--|--|
|  |  | For I-Beam  |  | For Flat-Tread Monorail  |
|  |  | 3.00" or 3.33" Flange Width   | 3.33" to 6.00" Flange Width  |  |
|  | Assembled Trolley Bracket with Plain Wheels<br>for Size C620C60 (2 for Plain Trolley;<br>1 for Hand Chain Trolley)<br>Standard . . . . .<br>Spark-Resistant . . . . .<br>for other Sizes (2 for Plain Trolley;<br>1 for Hand Chain Trolley)<br>Standard . . . . .<br>Spark-Resistant . . . . .<br>with Geared Wheels<br>Standard . . . . .<br>Spark-Resistant . . . . .<br>Trolley Bracket (1 for each Assembled Bracket)<br>for C620C60 and 60SR . . . . .<br>for other Sizes . . . . . | C620C60-B700-5<br>C620C60-BR700-5<br><br>D02-B430B-5<br>D02-BR430B-5<br><br>- - - - -<br>- - - - -<br>C620C60-700<br>D02-430B | C620C60-B700<br>C620C60-BR700<br><br>D02-B430B<br>D02-BR430B<br><br>D02-G430B<br>D02-GR430B<br>C620C60-700<br>D02-430B | C620C60-BT700<br>C620C60-BRT700<br><br>D02-BT430B<br>D02-BRT430B<br><br>D02-GT430B<br>D02-GRT430B<br>C620C60-700<br>D02-430B |
| 260  | Trolley Wheel (1 for each Assembled Bracket for C620C60; 2 for others)<br>Plain Wheel<br>Standard . . . . .<br>Spark-Resistant . . . . .<br>Geared Wheel<br>Standard . . . . .<br>Spark-Resistant . . . . .  | D02-231<br>D02-1231<br><br>- - - - -<br>- - - - -   | D02-431A<br>D02-1431<br><br>D02-472A<br>D02-1472   | D02-T431<br>D02-T1431<br><br>D02-T472<br>D02-R1472   |
| 261  | Trolley Wheel Shaft (1 for each Wheel)<br>for Plain Wheel . . . . .<br>for Geared Wheel . . . . .  | D02-435A<br>- - - - -   | D02-435A<br>D02-474A   | D02-435A<br>D02-474A   |
| 263  | Shaft Nut (1 for each Shaft) . . . . .   | DU-562  | DU-562   | DU-562   |
| *  | 3/4" Lock Washer (1 for each Shaft) . . . . .  | D01-692   | D01-692  | D01-692  |
| 264  | Angle Grease Fittings (1 for each Shaft) . . . . .   | 23-189  | 23-189   | 23-189   |
| 265  | Bearing Cap (1 for each Wheel) . . . . .   | D02-954   | D02-954  | D02-954  |
| 266  | Trolley Wheel Bearing (1 for each Wheel)<br>(AFBMA No. 35BC02JP) . . . . .   | 58-96   | 58-96  | 58-96  |
| 267  | Bearing Plate (1 for each Wheel) . . . . .   | D02-955   | D02-955  | D02-955  |
| 268  | Cap Screw (4 for each Wheel) . . . . .   | D02-957   | D02-957  | D02-957  |
| 269  | Elastic Stop Nut (4 for each Wheel) . . . . .  | 501-639   | 501-639  | 501-639  |
| 271  | Trolley Bracket Bolt (2 for each Assembled Trolley) . . . . .  | D02-439A-10   | C6H40A-439-11  | C6H40A-439-11  |
| 272  | Trolley Bracket Bolt Nut (1 for each Bolt) . . . . .   | D02-440B  | D02-440B   | D02-440B   |
| 273  | Trolley Bracket Spacer (See installation instructions on page 4).<br>1/6" (4.23 mm) thick . . . . .<br>1/4" (6.35 mm) thick . . . . .<br>3/8" (9.52 mm) thick . . . . .<br>1/2" (12.7 mm) thick . . . . .  | D02-442A-1/6<br>D02-442A-1/4<br>D02-442A-3/8<br>D02-442A-1/2  | D02-442A-1/6<br>D02-442A-1/4<br>D02-442A-3/8<br>D02-442A-1/2   | D02-442A-1/6<br>D02-442A-1/4<br>D02-442A-3/8<br>D02-442A-1/2   |
| 274  | Sprocket Bracket . . . . .   | D02-471   | D02-471  | D02-471  |
| 275  | Angle Grease Fitting (2) . . . . .   | 23-189  | 23-189   | 23-189   |
| 276  | Bracket Set Screw . . . . .  | D02-480A  | D02-480A   | D02-480A   |
| 277  | Set Screw Nut . . . . .  | G7-18   | G7-18  | G7-18  |
| 278  | Drive Pinion . . . . .   | D02-473   | D02-473  | D02-473  |
| *  | Drive Pinion Spacer . . . . .  | - - - - -   | - - - - -  | D02-442A-1/6   |
| 280  | Chain Sprocket Shaft . . . . .   | D02-475   | D02-475  | D02-475  |
| 281  | Taper Pin (2) . . . . .  | D02-520   | D02-520  | D02-520  |
| 282  | Chain Sprocket . . . . .   | D02-470   | D02-470  | D02-470  |
| 284  | Hand Chain (length as specified)<br>Standard . . . . .<br>Spark-Resistant . . . . .  | D02-B476<br>D02-L1476   | D02-B476<br>D02-L1476  | D02-B476<br>D02-L1476  |

\* Not illustrated.

**AUXILIARY TROLLEY PARTS FOR SIZES C620C60 AND C620C60SR HOISTS**

| ILLUSTRATION NUMBER<br>(Do not use for ordering) | PART NAME FOR ORDERING<br><br>(Parts indented after an item are included with that item)                      | PART NUMBER FOR ORDERING |
|--|---|--------------------------|
|  | Assembled Trolley Bracket (2 for each Auxiliary Trolley Assembly)   |                          |
|  | Standard . . . . .  | C620C60-B600             |
|  | Spark-Resistant . . . . .   | C620C60-BR600            |
| 600  | Trolley Bracket . . . . .   | C620C60-600              |
| 601  | Trolley Wheel<br>for use on 8" (203 mm) to 18" (457 mm) I-Beam, 4.00" (102 mm) to 6.00" (152 mm) flange width |                          |
|  | Standard . . . . .  | D02-431A                 |
|  | Spark-Resistant . . . . .   | D02-1431                 |
|  | for use on Flat Tread Monorail, 3.25" (83 mm) to 4.50" (114 mm) flange width                                  |                          |
|  | Standard . . . . .  | D02-T431                 |
|  | Spark-Resistant . . . . .   | D02-T1431                |
| 602  | Trolley Wheel Shaft . . . . .   | D02-435A                 |
| 603  | Shaft Nut . . . . .   | DU-562                   |
| *  | 3/4" Lock Washer . . . . .  | D01-692                  |
| 604  | Angle Grease Fitting . . . . .  | 23-189                   |
| 605  | Bearing Cap . . . . .   | D02-954                  |
| 606  | Trolley Wheel Bearing (AFBMA No. 35BC02JP). . . . .   | 58-96                    |
| 607  | Bearing Plate . . . . .   | D02-955                  |
| 608  | Cap Bolt (4 for each Wheel) . . . . .   | D02-957                  |
| 609  | Elastic Stop Nut (1/4"-28 thd.) (4 for each Wheel). . . . .   | 501-639                  |
| 610  | Trolley Bracket Bolt (2). . . . .   | C6H40A-439-11            |
| 611  | Trolley Bracket Bolt Nut (2) . . . . .  | D02-440B                 |
| 612  | Trolley Bracket Spacer (See Installation Instructions on Page 00)   |                          |
|  | 1/6" (4.23 mm). . . . .   | D02-442A-1/6             |
|  | 1/4" (6.35 mm). . . . .   | D02-442A-1/4             |
|  | 1/2" (12.7 mm). . . . .   | D02-442A-1/2             |

\* Not illustrated.

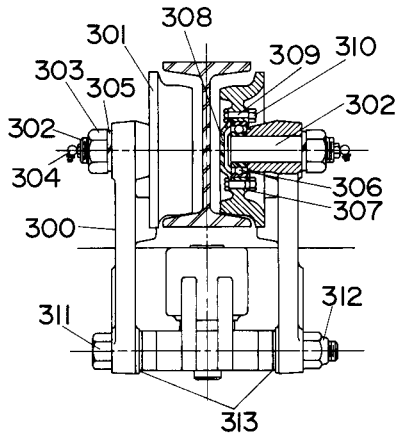
**SWIVEL TROLLEY PARTS  
FOR C620C60 STANDARD HEADROOM HOISTS**

Illustrated on Page 30.

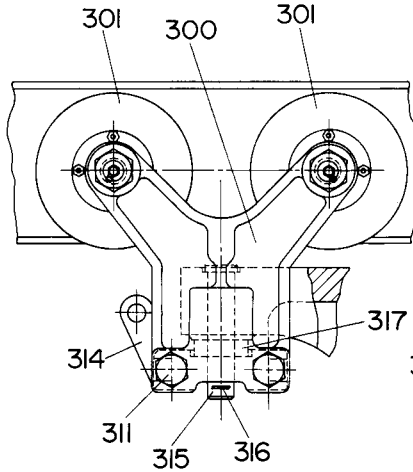
| ILLUSTRATION NUMBER<br>(Do not use for ordering) | PART NAME FOR ORDERING<br><br>(Parts indented after an item are included with that item) | PART NUMBER FOR ORDERING |
|--|--|--------------------------|
| △  | Swivel Trolley Kit. . . . .  | C6H40A57-K425            |
| 620  | Mounting Block (2) . . . . .   | C6H40A57-425             |
| 621  | Yoke (2) . . . . .   | D6H60A-590               |
| 622  | Swivel Block Bolt (2) . . . . .  | C6H40A57-823             |
| 623  | Swivel Block Bolt Nut (2). . . . .   | C6H40A57-824             |
| 624  | Swivel Bolt Spacer (2). . . . .  | C6H40A57-825             |
| 625  | Roll Pin (2). . . . .  | 599-115                  |
| 626  | Thrust Bearing (2). . . . .  | D02-379A                 |
| 627  | Yoke Bolt (4). . . . .   | D02-339                  |
| 628  | Yoke Bolt Nut (4) . . . . .  | D02-440B                 |

△ The Swivel Trolley Kit contains the correct quantity of parts for swivel mounting two Trolley Assemblies.

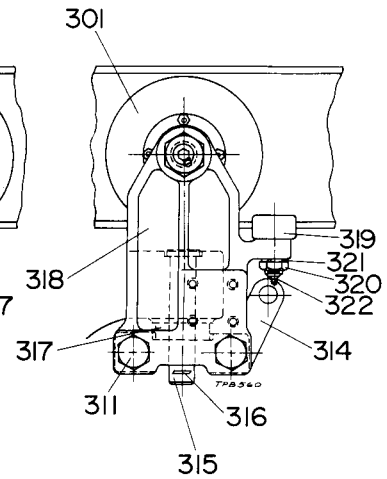
## SWIVEL TROLLEY ASSEMBLIES FOR LOW HEADROOM HOISTS



**End View of Swivel Trolley**



**Plain Swivel Trolley For Low Headroom Hoists**



**Auxiliary Swivel Trolley For Low Headroom Hoists**

| PART NAME FOR ORDERING   | PART NUMBER FOR ORDERING   |
|--|--|
| <b>Plain Swivel Trolley Assembly</b><br>To operate on 7" (178 mm) to 12" (305 mm), 3.66" (93 mm) to 6" (152 mm) flange width<br>Standard .....<br>Spark-Resistant .....<br>To operate on Flat-Tread Monorail, 3.25" (83 mm) to 4.50" (114 mm) flange width<br>Standard .....<br>Spark-Resistant .....            | C6H20A-AL430<br>C6H20A-ARL430<br>C6H20A-AL430T<br>C6H20A-ARL430T |
| <b>Hand Chain Trolley Assembly</b><br>To operate on 7" (178 mm) to 12" (305 mm) I-Beam, 3.66" (93 mm) to 6" (152 mm) flange width<br>Standard .....<br>Spark-Resistant .....<br>To operate on Flat-Tread Monorail, 3.25" (83 mm) to 4.50" (114 mm) flange width<br>Standard .....<br>Spark-Resistant .....       | C6H20A-AL471<br>C6H20A-ARL471<br>C6H20A-AL471T<br>C6H20A-ARL471T |
| <b>Auxiliary Swivel Trolley Assembly</b><br>To operate on 7" (178 mm) to 12" (305 mm) I-Beam, 3.66" (93 mm) to 6" (152 mm) flange width<br>Standard .....<br>Spark-Resistant .....<br>To operate on Flat-Tread Monorail, 3.25" (83 mm) to 4.50" (114 mm) flange width<br>Standard .....<br>Spark-Resistant ..... | C6H20A-AL690<br>C6H20A-ARL690<br>C6H20A-AL690T<br>C6H20A-ARL690T |

When ordering a Trolley Assembly or Auxiliary Trolley Assembly, always specify the flange width of the I-Beam or Monorail on which the Trolley is to operate.

## SWIVEL TROLLEY PARTS FOR LOW HEADROOM HOISTS

| ILLUS.<br>NUMBER<br>(Do not use<br>for ordering) | PART NAME FOR ORDERING<br><br>(Parts indented after an item are included with that item)   | PART NUMBER FOR ORDERING |                        |
|--|--|--------------------------|------------------------|
|  |  | I-Beam                   | Flat-Tread<br>Monorail |
|  | Assembled Swivel Trolley Bracket   |                          |                        |
|  | with Plain Wheels  |                          |                        |
|  | Standard . . . . .   | C6H20A-BL430             | C6H20A-BL430T          |
|  | Spark-Resistant . . . . .  | C6H20A-BRL430            | C6H20A-BRL430T         |
|  | with Geared Wheels   |                          |                        |
|  | Standard . . . . .   | C6H20A-GL430             | C6H20A-GL430T          |
|  | Spark-Resistant . . . . .  | C6H20A-GRL430            | C6H20A-GRL430T         |
| 300  | Swivel Trolley Bracket . . . . .   | C6H20A-L430              | C6H20A-L430            |
| 301  | Trolley Wheel  |                          |                        |
|  | Plain Wheel  |                          |                        |
|  | Standard . . . . .   | D02-431A                 | D02-T431               |
|  | Spark-Resistant . . . . .  | D02-1431                 | D02-T1431              |
|  | Geared Wheel   |                          |                        |
|  | Standard . . . . .   | D02-472A                 | D02-T472               |
|  | Spark-Resistant . . . . .  | D02-1472                 | D02-T1472              |
| 302  | Trolley Wheel Shaft (1 for each Wheel)   |                          |                        |
|  | Plain Side . . . . .   | D02-435A                 | D02-435A               |
|  | Geared Side . . . . .  | D02-474A                 | D02-474A               |
| 303  | Trolley Wheel Shaft Nut (1 for each Shaft) . . . . .   | DU-562                   | DU-562                 |
| 304  | Angle Grease Fitting (1 for each Shaft) . . . . .  | 23-189                   | 23-189                 |
| 305  | 3/4" Lock Washer (1 for each Shaft) . . . . .  | D01-692                  | D01-692                |
| 306  | Trolley Wheel Bearing (AFBMA No. 25BC02JP) (1 for each Wheel) . . . . .  | 58-96                    | 58-96                  |
| 307  | Bearing Plate (1 for each Wheel) . . . . .   | D02-955                  | D02-955                |
| 308  | Bearing Cap (1 for each Wheel) . . . . .   | D02-954                  | D02-954                |
| 309  | 1/4" Cap Screw (4 for each Wheel) . . . . .  | D02-957                  | D02-957                |
| 310  | 1/4" Elastic Stop Nut (4 for each Wheel) . . . . .   | 501-639                  | 501-639                |
| 311  | Trolley Bracket Bolt (2 for each Assembled Trolley)  |                          |                        |
|  | 8 1/2" long (for 7" - 178 mm I-Beam, 3.66" - 93 mm flange width) . . . . .   | C6H20A-L439-8 1/2        | - - - - -              |
|  | 9" long (for 8" - 203 mm I-Beam, 4.00" - 102 mm flange width; for Flat-Tread Monorail, 3.25" - 83 mm to 3.33" - 85 mm flange width) . . . . .                                  | D01-694-9                | D01-694-9              |
|  | 9 1/2" long (for 10" - 254 mm or 12" - 305 mm I-Beam, 4.66" to 5.00" 118 to 127 mm) flange width; for Flat-Tread Monorail, 4.06" - 103 mm flange width . . . . .               | D01-694-9 1/2            | D01-694-9 1/2          |
|  | 10 1/2" - 267 mm long (for 15" - 381 mm to 18" - 457 mm I-Beam, 5.50" - 140 mm to 6.00" - 152 mm flange width; for Flat-Tread Monorail, 4.50" - 114 mm flange width) . . . . . | C6H20A-L439-10 1/2       | C6H20A-L439-10 1/2     |
| 312  | Trolley Bracket Bolt Nut (1 for each Trolley Bracket Bolt) . . . . .   | D01-341A                 | D01-341A               |
| 313  | Trolley Bracket Spacer (see installation instructions on page 4).  |                          |                        |
|  | 1/6" (4.23 mm) thick . . . . .   | C6H20A-L442-1/6          | C6H20A-L442-1/6        |
|  | 1/4" (6.35 mm) thick . . . . .   | C6H20A-L442-1/4          | C6H20A-L442-1/4        |
|  | 3/8" (9.52 mm) thick . . . . .   | - - - - -                | C6H20A-L442-3/8        |
|  | 1/2" (23.7 mm) thick . . . . .   | C6H20A-L442-1/2          | - - - - -              |
| 314  | Trolley Mounting Swivel Block . . . . .  | C6H20A-L425              | C6H20A-L425            |
| 315  | Swivel Block Pin . . . . .   | C6H20A-L823              | C6H20A-L823            |
| 316  | Swivel Block Pin Cotter . . . . .  | C6H20A-438               | C6H20A-438             |
| 317  | Swivel Thrust Bearing . . . . .  | D02-1379                 | D02-1379               |
| ★ 274  | Sprocket Bracket . . . . .   | D02-471                  | D02-471                |
| ★ 275  | Angle Grease Fitting (2) . . . . .   | 23-189                   | 23-189                 |
| ★ 276  | Bracket Set Screw . . . . .  | D02-480A                 | D02-480A               |
| ★ 277  | Set Screw Nut . . . . .  | G7-18                    | G7-18                  |
| ★ 278  | Drive Pinion . . . . .   | D02-473                  | D02-473                |
| ★ *  | Drive Pinion Spacer . . . . .  | - - - - -                | D02-442-1/6            |
| ★ 280  | Chain Sprocket Shaft . . . . .   | D02-475                  | D02-475                |
| ★ 281  | Taper Pin (2) . . . . .  | D02-520                  | D02-520                |
| ★ 282  | Chain Sprocket . . . . .   | D02-470                  | D02-470                |
| ★ 284  | Hand Chain (length as specified)   |                          |                        |
|  | Standard . . . . .   | D02-B476                 | D02-B476               |
|  | Spark-Resistant . . . . .  | D02-L1476                | D02-L1476              |

\* Not illustrated.

★ Hand Chain Trolley Parts (refer to illustration on page 30).

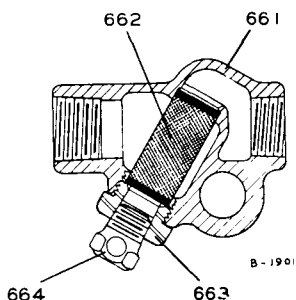
## AUXILIARY TROLLEY PARTS FOR LOW HEADROOM HOISTS

| ILLUSTRATION NUMBER<br>(Do not use for ordering) | PART NAME FOR ORDERING<br><br>(Parts indented after an item are included with that item)   | PART NUMBER FOR ORDERING |                         |
|--|--|--------------------------|-------------------------|
|  |  | for I-Beam               | for Flat-Tread Monorail |
| 318  | Assembled Auxiliary Swivel Trolley Bracket   |                          |                         |
|  | Gear Case Side Bracket   |                          |                         |
|  | Standard . . . . .   | C6H20A-BL689             | C6H20A-BL689T           |
|  | Spark-Resistant . . . . .  | C6H20A-BRL689            | C6H20A-BRL689T          |
|  | Motor Side Bracket   |                          |                         |
|  | Standard . . . . .   | C6H20A-BL690             | C6H20A-BL690T           |
|  | Spark-Resistant . . . . .  | C6H20A-BRL690            | C6H20A-BRL690T          |
|  | Auxiliary Swivel Trolley Bracket   |                          |                         |
|  | Gear Case Side . . . . .   | C6H20A-L689              | C6H20A-L689             |
|  | Motor Side . . . . .   | C6H20A-L690              | C6H20A-L690             |
| 319  | Trolley Guide Roller . . . . .   | C6H20A-688               | C6H20A-688              |
| 320  | Guide Roller Nut . . . . .   | D01-305                  | D01-305                 |
| 321  | Guide Roller Lock Washer . . . . .   | A-67                     | A-67                    |
| 322  | Guide Roller Grease Fitting . . . . .  | C6H20A-327               | C6H20A-327              |
|  | <p>Each Assembled Auxiliary Swivel Trolley Bracket also includes the following illustrated parts: 301, 302, 303, 304, 305, 306, 307, 308, 309 (4), 310 (4).</p> <p>Each Auxiliary Swivel Trolley Assembly also includes illustrated parts: 311 (2), 312 (2), 313, 314, 315, 316 and 317.</p> |                          |                         |

**TRACTOR DRAWBAR PARTS (Not illustrated)**

| PART NAME FOR ORDERING   | PART NUMBER FOR ORDERING |
|--|--------------------------|
| <b>For C620C20, 20SR, 40 and 40SR Hoists<br/>Mounted Parallel with Beam</b>  |                          |
| Drawbar Yoke . . . . .   | C6H20A-607               |
| Yoke Hinge Bolt . . . . .  | BU-629                   |
| Yoke Hinge Bolt Nut . . . . .  | D02-341A                 |
| Drawbar Pin . . . . .  | C6H20A-793               |
| Drawbar Pin Cotter (2) . . . . .   | D02-524                  |
| <b>For C620C32, 32SR, 60 and 60SR Hoists<br/>Mounted Parallel with Beam</b>  |                          |
| Drawbar Yoke . . . . .   | C6H20A-607               |
| Yoke Hinge Pin . . . . .   | C6H20A-608               |
| Hinge Pin Set Screw . . . . .  | D10-449                  |
| Hinge Pin Cotter (2) . . . . .   | D02-330                  |
| Drawbar Bracket . . . . .  | D6H60A-611               |
| Bracket Hinge Pin . . . . .  | C6H40A-612               |
| Drawbar Pin . . . . .  | C6H20A-793               |
| Drawbar Pin Cotter (2) . . . . .   | D02-524                  |
| <b>For C6CA15, 15SR, 25; C620C20, 20SR, 32 and 32SR with 90° Angle Attachment, and C6CA15, 15SR and<br/>25 when Mounted Parallel with Beam</b> |                          |
| Drawbar Yoke . . . . .   | C6H20A-607               |
| Yoke Hinge Pin . . . . .   | C6H20A-608               |
| Hinge Pin Set Screw . . . . .  | D10-449                  |
| Hinge Pin Cotter (2) . . . . .   | D02-330                  |
| Drawbar Bracket . . . . .  | C6CA-611                 |
| Bracket Hinge Pin . . . . .  | C6CA-612                 |
| Drawbar Pin . . . . .  | C6H20A-793               |
| Drawbar Pin Cotter (2) . . . . .   | D02-524                  |
| <b>For C620C60 and 60SR with Swivel Trolleys</b>   |                          |
| Drawbar Yoke . . . . .   | C6H20A-607               |
| Yoke Hinge Pin . . . . .   | C6H20A-608               |
| Hinge Pin Cotter (2) . . . . .   | D02-330                  |
| Drawbar Pin . . . . .  | C6H20A-793               |
| Drawbar Pin Cotter (2) . . . . .   | D02-524                  |

## ACCESSORIES



### Air Strainer Assembly

| ILLUSTRATION NUMBER<br>(Do not use for ordering) | PART NAME FOR ORDERING<br><br>(Parts indented after an item are included with that item)          | PART NUMBER FOR ORDERING |
|--|---|--------------------------|
| 661  | Air Strainer Assembly . . . . .   | EU-A267                  |
| 662  | Air Strainer Screen . . . . .   | P25-61A                  |
| 663  | Air Strainer Cap . . . . .  | P25-268                  |
| 664  | Air Strainer Plug . . . . .   | P25-536                  |
| *  | Air Strainer Nipple (3/4" x 2") (required for attaching Air Strainer Assembly to Hoist) . . . . . | D02-456                  |
| *  | 90° Angle Attachment (for use with Sizes C6CA15, 15SR; C620C20, 20SR, 32 and 32SR) . . . . .      | C640A19-444              |
| *  | Angle Attachment Bolt (2) . . . . .   | D01C-694-8 1/2           |
| *  | Angle Attachment Bolt Nut (2) . . . . .   | D02-440B                 |
| *  | Exhaust Muffler Assembly . . . . .  | D02-674A                 |
| *  | Muffler Nipple (1" close nipple) . . . . .  | P35-286                  |
| *  | Muffler Chain . . . . .   | D02-673                  |
| *  | S-Hook (2) . . . . .  | D02-421                  |

\* Not illustrated.

## MAINTENANCE TOOLS

| TOOL NUMBER FOR ORDERING | TOOL NAME FOR ORDERING  | OPERATION  |
|--------------------------|---|--|
| P25-228                  | Grease Gun . . . . .  | Lubrication.   |
| 4U-478                   | Rope Set Screw Wrench (Hex Key 5/32" across flats) (for Sizes C620C100, 100SR, 100LH and 100LR) . . . . .   | Loosening and tightening the Rope Set Screws in the Rope Drum (96).  |
| JA4-478                  | Rope Set Screw Wrench (Hex Key 3/16" across flats) (for Sizes C6CA15, 15SR, 25; C620C20, 20SR, 20LH, 20LR, 32, 32SR, 32LH, 32LR, 40, 40SR, 60 and 60SR) . . . . . | Loosening and tightening the Rope Set Screws in the Rope Drum (96).  |
| D02-932                  | Valve Chest Jack Bolt (2 required) . . . . .  | Removing the Valve Chest (27) from the Motor Case (1).   |
| D02-933                  | Piston Ring Compressor . . . . .  | Compressing the Piston Rings (24 and 25) when installing a Cylinder (19).  |
| 23470                    | Throttle Valve Stem Reamer . . . . .  | Reaming the throttle valve stem hole in the Reverse Valve Bushing (29 or 402) after installing a new Bushing in the Valve Chest (27) or Control Block Valve Chest (401). |
| 43051                    | Brake Valve Bushing Inserting Tool . . . . .  | Installing a new Brake Valve Bushing (31) in the Valve Chest (27).   |
| 71869                    | Shuttle Valve Bushing Inserting Tool . . . . .  | Installing new Shuttle Valve Bushings (33) in the Valve Chest (27).  |
| 75751                    | Shuttle Valve Chest Bushing Reamer . . . . .  | Reaming new Shuttle Valve Bushings (33) to size after pressing them into the Valve Chest (27).   |
| 76557                    | Pinion Inner Bearing Inserting Tool . . . . .   | Installing the Motor Shaft Bearing (99) in the Rope Drum (96).   |
| 76558                    | Sheave Bearing Inserting Tool (for Sizes C6CA15, 15SR, 25; C620C40, 40SR, 60 and 60SR) . . . . .  | Installing the Sheave Bearing (247) in the Sheave (246).   |
| 76559                    | Sheave Bearing Inserting Tool (for Sizes C620C20, 20SR, 20LH, 20LR, 32, 32SR, 32LH, 32LH, 32LR, 100, 100SR, 100LH and 100LR) . . . . .                            | Installing the Sheave Bearing (247) in the Sheave (246).   |



**PARTS FOR SUPERSEDED HOISTS  
STANDARD HEADROOM SIZES**

| <b>Standard</b> | <b>Standard</b> | <b>Spark-Resistant</b> |
|-----------------|-----------------|------------------------|
| C6H20A15        | C6H20B14        | C6H20A15SR             |
| C6H20A22        | C6H20B20        | C6H20A22SR             |
| C6H20A28        | C6H20B32        | C6H20A28SR             |
| C6H20A35        |                 | C6H20A35SR             |
| C6H20A40        |                 | C6H20A40SR             |
| C6H20A60        |                 | C6H20A60SR             |
| C6H20A100       |                 | C6H20A100R             |

**LOW HEADROOM SIZES**

| <b>Standard</b> | <b>Spark-Resistant</b> |
|-----------------|------------------------|
| C6H20A15LH      | C6H20A15LR             |
| C6H20A22LH      | C6H20A22LR             |
| C6H20A35LH      | C6H20A35LR             |

Series C6H20A and C6H20B Hoists have been superseded by Series C620C Hoists. Unless otherwise specified, the repair parts for Series C6H20A and C6H20B Hoists are the same as corresponding parts for C620C Hoists. The parts listed are for superseded sizes.

**MOTOR PARTS**

Series C6H20A and C6H20B Hoists were originally furnished with a Mechanical Load Brake. The parts listed are for Hoists equipped with a Pendant Throttle or Remote Control and Mechanical Load Brake only. When ordering the Valve Chest and Valve Assembly use part number C6H20A-A245. To order the Valve Chest Assembly use part number C6H20A-B245.

## MAIN HOIST PARTS

| ILLUSTRATION NUMBER<br>(Do not use for ordering) | PART NAME FOR ORDERING<br><br>(Parts indented after an item are included with that item) | PART NUMBER FOR ORDERING |
|--|--|--------------------------|
| 96   | Rope Drum Assembly<br>for Sizes C6H20A28 and 28SR . . . . .                              | C6H20A28-A371            |
|  | for Sizes C6H20A35, 35SR, 35LH and 35LR . . . . .  | C6H20A35-A371            |
|  | for Sizes C6H20B14 and 14SR . . . . .  | C6H20B14-A371            |
| 108  | Wire Rope<br>for Size C6H20A15 . . . . .   | C6H20A15-372             |
|  | for Size C6H20A15SR . . . . .  | C6H20A15-R372            |
|  | for Size C6H20A15LH . . . . .  | C6H20A15-L372            |
|  | for Size C6H20A15LR . . . . .  | C6H20A15-LR372           |
|  | for Size C6H20A22 . . . . .  | C6H20A22-372             |
|  | for Size C6H20A22SR . . . . .  | C6H20A22-R372            |
|  | for Size C6H20A22LH . . . . .  | C6H20A22-L372            |
|  | for Size C6H20A22LR . . . . .  | C6H20A22-LR372           |
|  | for Size C6H20A35 . . . . .  | C6H20A35-372             |
|  | for Size C6H20A35SR . . . . .  | C6H20A35-R372            |
|  | for Size C6H20A35LH . . . . .  | C6H20A35-L372            |
|  | for Size C6H20A35LR . . . . .  | C6H20A35-LR372           |
|  | for Size C6H20B14 . . . . .  | C6H20B14-372             |
|  | for Size C6H20B14SR . . . . .  | C6H20B14-R372            |
| 112  | Rope Guide, Motor End<br>for Sizes C6H20A15 and 15SR . . . . .                           | C6H20A15-R790            |
|  | for Sizes C6H20A22, 22SR, 35 and 35SR . . . . .  | C6H20A22-R790            |
|  | for Sizes C6H20B14 and 14SR . . . . .  | C6H20B14-R790            |
| 113  | Rope Guide, Gear End (for Sizes C6H20A15, 15SR, 22, 22SR, 35 and 35SR) . . . . .         | C6H20A22-R789            |
| *  | Rope Thimble (for Sizes C6H20A28, 28SR, 40, 40SR, 60 and 60SR) . . . . .                 | DU-602                   |
| 117  | Stop Cam<br>for Sizes C6H20A28 and 28SR . . . . .  | C6H20A28-R771            |
|  | for Sizes C6H20A40, 40SR, 60 and 60SR . . . . .  | C6H20A40-R771            |
|  | for Sizes C6H20A15LH and 15LR . . . . .  | C6H20A15-LR771           |
|  | for Sizes C6H20A22LH, 22LR, 35LH and 35LR . . . . .                                      | C6H20A22-LR771           |

\* Not illustrated.

## MECHANICAL LOAD BRAKE

Some Superseded Hoists were supplied with Mechanical Load Brake only. Parts used in this application, in addition to those listed on page 24, are listed below.

| PART NAME FOR ORDERING  | PART NUMBER FOR ORDERING |
|---|--------------------------|
| Pinion Cap . . . . .  | C6H20A-25                |
| Pinion Cap Gasket . . . . .   | C6H20A-27                |
| Pinion Cap Retaining Screw (3) (1/4"-20 thd. x 3/8" long) . . . . . | RV1-376                  |
| Retaining Screw Lock Washer (3) . . . . .                           | L01-67                   |

It is recommended that Hoists having only a Mechanical Load Brake be converted to the Dual Brake system by installing a Conversion Kit, C6H20A-K390. This kit contains all parts necessary for installing a complete Diaphragm Brake on Hoists equipped with Pull Chain Throttle. For Hoists equipped with Pendent Throttle or Remote Control, No. C6H20A-A45 Valve Chest and Valve Assembly must also be ordered and installed when converting from Mechanical Load Brake to Dual Brake.

## RIGID AND SWIVEL TROLLEY PARTS FOR STANDARD HEADROOM HOISTS

| ILLUSTRATION NUMBER<br>(Do not use for ordering) | PART NAME FOR ORDERING<br><br>(Parts indented after an item are included with that item)        | PART NUMBER FOR ORDERING |                         |
|--|---|--------------------------|-------------------------|
|  |   | for I-Beam               | for Flat-Tread Monorail |
| 600  | Assembled Trolley Bracket<br>for Sizes C6H20A15, 22, 28, 35, 40 and 100;<br>C6H20B14, 20 and 32 |                          |                         |
|  | Standard .....  | C6H20A-B430              | C6H20A-B430T            |
|  | Spark-Resistant .....   | C6H20A-BR430             | C6H20A-BR430T           |
|  | for Size C6H20A60   |                          |                         |
|  | Standard .....  | C6H20A60-B700            | C6H20A60-B700T          |
|  | Spark-Resistant .....   | C6H20A60-BR700           | C6H20A60-BR700T         |
|  | Trolley Bracket<br>for Sizes C6H20A60 and 60SR .....  | C6H20A60-700             | C6H20A60-700            |
|  | for other Sizes .....   | C6H20A-430               | C6H20A-430              |

## SWIVEL TROLLEY PARTS FOR C6H20A60 AND C6H20A60SR HOISTS (See illustration on page 30).

| ILLUSTRATION NUMBER<br>(Do not use for ordering) | PART NAME FOR ORDERING<br><br>(Parts indented after an item are included with that item) | PART NUMBER FOR ORDERING |
|--|--|--------------------------|
| 620  | Trolley Mounting Swivel Block (2) .....  | C6H20A60-425             |
| 621  | Swivel Trolley Yoke (2) .....  | C6H20A60-827             |
| 622  | Swivel Block Bolt (2) .....  | C6H20A60-823             |
| 623  | Swivel Bolt Nut (2) .....  | C6H20A60-824             |
| 624  | Swivel Bolt Spacer (2) .....   | D02-1591                 |
| 625  | Swivel Bolt Pin (2) .....  | C6H20A-826               |
| 626  | Swivel Thrust Bearing (2) .....  | D02-1379                 |
| 627  | Swivel Yoke Bolt (4) .....   | C6H20A-339               |
| 628  | Yoke Bolt Nut (4) .....  | C6H20A-440               |

## HAND CHAIN TROLLEY PARTS

| ILLUSTRATION NUMBER<br>(Do not use for ordering) | PART NAME FOR ORDERING<br><br>(Parts indented after an item are included with that item) | PART NUMBER FOR ORDERING |                         |
|--|--|--------------------------|-------------------------|
|  |  | for I-Beam               | for Flat-Tread Monorail |
| 260  | Assembled Trolley Bracket<br>Geared Side<br>for Standard Headroom Hoists                 |                          |                         |
|  | Standard .....   | C6H20A-G430              | C6H20A-G430T            |
|  | Spark-Resistant .....  | C6H20A-GR430             | C6H20A-GR430T           |
|  | Plain Side<br>for Standard Headroom Hoists   |                          |                         |
|  | Standard .....   | C6H20A-B430              | C6H20A-B430T            |
|  | Spark-Resistant .....  | C6H20A-BR430             | C6H20A-BR430T           |
|  | Trolley Bracket for Standard Headroom Hoists .....                                       | C6H20A-430               | C6H20A-430              |

**DRAWBAR PARTS (Not illustrated)**

| PART NAME FOR ORDERING                                       | PART NUMBER FOR ORDERING |
|--|--------------------------|
| Drawbar Yoke . . . . .                                       | C6H20A-607               |
| Yoke Hinge Pin . . . . .                                     | C6H20A-608               |
| Hinge Pin Cotter (2) (1/8" x 1 1/4") . . . . .               | D02-330                  |
| Drawbar Pin . . . . .  | C6H20A-793               |
| Drawbar Pin Cotter (2) (3/32" x 3/4") . . . . .              | D02-524                  |
| Drawbar Bracket (for Standard Headroom Hoists) . . . . .     | D6H60A-611               |
| Bracket Hinge Pin (for Standard Headroom Hoists) . . . . .   | C6H20A-612               |
| Hinge Pin Set Screw (for Standard Headroom Hoists) . . . . . | D10-449                  |

**TROLLEY BRACKET BOLTS REQUIRED FOR MOUNTING  
TROLLEYS ON VARIOUS TRACKS**

**I-BEAMS**

| BEAM SIZE |     | FLANGE WIDTH |     | FOR STANDARD HEADROOM HOISTS     | FOR LOW HEADROOM HOISTS          |
|-----------|-----|--------------|-----|----------------------------------|----------------------------------|
| in.       | mm  | in.          | mm  | Trolley Bracket Bolt Part Number | Trolley Bracket Bolt Part Number |
| 6         | 152 | 3.33         | 85  | C6H20A-439-9                     | D01-694-8                        |
| 7         | 178 | 3.66         | 93  |                                  | C6H20A-L439-8 1/2                |
| 8         | 203 | 4.00         | 102 | C6H20A-439-9 1/2                 | D01-694-9                        |
| 10        | 254 | 4.66         | 118 | C6H20A-439-10 1/2                | D01-694-9 1/2                    |
| 12        | 305 | 5.00         | 127 |                                  |                                  |
| 15        | 381 | 5.50         | 140 | C6H20A-439-11 1/2                | C6H20A-L439-10 1/2               |
| 18        | 457 | 6.00         | 152 |                                  |                                  |

**FLAT-TREAD MONORAILS**

| FLANGE WIDTH OF MONORAIL |          | FOR STANDARD HEADROOM HOISTS     | FOR LOW HEADROOM HOISTS          |
|--------------------------|----------|----------------------------------|----------------------------------|
| in.                      | mm       | Trolley Bracket Bolt Part Number | Trolley Bracket Bolt Part Number |
| 3.25 to 3.33             | 82 to 85 | C6H20A-439-9 1/2                 | D01-694-9                        |
| 4 1/16                   | 103      |                                  | D01-694-9 1/2                    |
| 4 1/2                    | 114      | C6H20A-439-10 1/2                | C6H20A-L439-10 1/2               |





# Ingersoll-Rand®

● **Atlanta, Ga.**  
111 Ingersoll-Rand Drive  
Chamblee, Georgia 30341

★ **Beaumont, Texas** 77648  
5336 Twin City Highway  
Port Arthur, Texas

★ **Birmingham, Ala.** 35233  
1516 Second Ave., South

★ **Buffalo, N. Y.** 14225  
195 Sugg Rd.

● **Charlotte, N. C.** 28208  
4840 Wilmont Rd.

● **Chicago, Ill.**  
888 Industrial Drive  
Elmhurst, Illinois 60126

● **Cincinnati, Ohio**  
619 Redna Terrace  
Woodlawn, Ohio 45215

● **Cleveland, Ohio** 44125  
9257 Midwest Ave.

● **Dallas, Texas** 75247  
8901 Directors Row

● **Denver, Colo.** 80216  
4045 Elati St.

● **Detroit, Mich.**  
2212 Telegraph Road  
Southfield, Mich. 48075

● **Hartford, Conn.** 06114  
151 Meadow St.

● **Houston, Texas** 77027  
6800 Sands Point, P.O. 1455

★ **Indianapolis, Ind.** 46220  
2120 East 54th St.

● **Kansas City, Mo.** 64114  
8900 Ward Parkway

● **Los Angeles, Calif.** 90022  
5533 East Olympic Blvd

Tool & Hoist Division  
28 Kennedy Blvd.  
East Brunswick, N. J. 08816

● **Memphis, Tenn.** 38116  
1231 E. Raines Rd.  
P.O. Box 16248  
Whitehaven Station

● **Milwaukee, Wis.** 53225  
2311 W. Silver Springs Dr.

● **Minneapolis, Minn.** 55404  
Corner Franklin and Cedar

● **Moline, Ill.**  
1808 11th St.  
Rock Island, Ill 61201

● **Newark, N. J.**  
28 Kennedy Blvd.  
East Brunswick, N. J. 08816

● **New Orleans, La.** 70125  
960 South Genois Street

● **Philadelphia, Pa.**  
651 Park Ave.  
King of Prussia, Pa. 19406

● **Pittsburgh, Pa.** 15220  
6 Parkway Ctr.

★ **Richmond, Va.** 23230  
3431 West Leigh St.

● **San Francisco, Calif.**  
14299 Wicks Blvd.  
San Leandro, Calif. 94577

★ **Schenectady, N. Y.** 12303  
723 Crane St.

● **Seattle, Wash.** 98188  
345 Andover Park East

● **St. Louis, Mo.** 63132  
1515 Page Industrial Blvd.

★ **Tampa, Fla.** 33609  
3307 South Westshore Blvd.

★ **Tulsa, Oklahoma** 74120  
407 South Peoria Ave.

● **Washington, D. C.** 20006  
1627 K. St., N. W.

● Branch and Factory Repair Servicenters.

★ Factory Repair Servicenter only

## CANADA

● **Calgary, Alberta,** T2H 0B4  
210 61st. Ave., S. W.

● **Edmonton, Alberta,** T5L 2Y3  
14530 123rd. Ave.

● **Montreal 111, Quebec**  
620 Cathcart St.  
P.O. Box 1148

Canadian Ingersoll-Rand Co., Limited  
● **Montreal 111, Quebec**  
620 Cathcart St.  
P.O. Box 610

● **Sudbury, Ontario**  
P. O. Box 2220

● **Toronto 12, Ontario**  
255 Lesmill Road,  
Don Mills

● **Vancouver 4, British Columbia**  
1695 Main St.

● **Winnipeg, Manitoba,** R3H 0M6  
1234 Border St., St. James

## MEXICO

● **Mexico 10, D. F., Mexico**  
Ingersoll-Rand S. A. de C. V.  
Apartado 41-666

● **Monterrey**  
Ingersoll-Rand S. A. de C. V.  
Apartado 4457

## SOUTH AMERICA

● **Argentina, Buenos Aires**  
Ingersoll-Rand Argentina  
S. A. I. y C.  
Casilla Correo 2412, Correo Central

● **Bolivia, La Paz**  
International Machinery Co. (Bolivia), S. A.  
Casilla 852

● **Brazil, Rio de Janeiro**  
Ingersoll-Rand S. A., Ind. e Com.  
Caixa Postal 939-ZC-00

● **Brazil, Sao Paulo**  
Ingersoll-Rand S.A. Ind. e Com.  
Caixa Postal 911

● **Chile, Santiago**  
Grace y Cia (Chile) S. A.  
International Machinery Div.  
Casilla 107-D

● **Colombia, Bogota**  
Maquinarias Ingersoll-Rand  
de Colombia, S. A.  
Apartado Aereo 7451

● **Ecuador, Quito**  
Ing. J. Espinosa Z.  
Casilla 220-A

● **French Guiana, Cayenne**  
Cheneaux & P de Reynal  
B P 255

● **Guadeloupe, Pointe-a-Pitre**  
Etablissements Hayot et Simmonet  
Route de Abymes

● **Guyana, Georgetown**  
Associated Industries Ltd.  
51 Camp & Robb Sts.

● **Martinique, Fort-de-France**  
Cheneaux & P de Reynal  
Boite Postale 49

● **Peru, Lima**  
Ingersoll-Rand Co. of Peru, S.A.  
Casilla 2261

● **Surinam, Paramaribo**  
Surinam Machinery Co., Ltd.  
P. O. Box 1808

● **Uruguay, Montevideo**  
General Electric, S. A.  
Casilla de Correo 360

● **Venezuela, Caracas**  
Ingersoll-Rand de Venezuela S.A.  
Apartado 70588, Los Ruices

## EUROPE

● **Austria 1111, Vienna**  
Ingersoll-Rand Ges M. B. H.  
P. O. Box 76

● **Belgium, B-4320 Diegem**  
Ingersoll-Rand Benlux  
Kouterstraat 10-12

● **Cyprus, Nicosia**  
N. P. Lanitis Co., Ltd.  
P.O. Box 1696

● **Denmark, Albertslund, DK 2620**  
Ingersoll-Rand AB  
Herstedvang 11

● **England, London, SW1X 7LU**  
Ingersoll-Rand Co., Ltd.  
Eowater House  
Knightsbridge

● **Scotland, Glasgow S.1**  
Ingersoll-Rand Co., Ltd.  
21 Shawland Arcade

● **Finland, Helsinki**  
Oy Polytrade AB  
Hallonnagatan 20C

● **Finland, Tampere**  
Rotator Oy  
Hatanpäävaltie 38

● **France, Boulogne-Billancourt (Seine)**  
Compagnie Ingersoll-Rand  
19/29 Rue du General Gallieni

● **Greece, Athens**  
"ATE" Avras S. A. I. C.  
P. O. Box 1250 Omnia

● **Germany, 403 Ratingen**  
Ingersoll-Rand GmbH  
Robt. Zapp Str.  
Postfach 1380

● **Sherbrooke, Quebec**  
375 Courcellette St.

## EUROPE (Continued)

● **Iceland, Reykjavik**  
Elding Trading Co. Inc.  
Hafnarhvoli-Tryggvagotu

● **Ireland, Dublin 12**  
Ingersoll-Rand Company (Ireland) Ltd.  
John F. Kennedy Drive  
Bluebell

● **Italy, 20060 Vignate-Milano**  
Ingersoll-Rand Italiana, S.P.A.  
Casella Postale 1232

● **Netherlands, Pynacker**  
Ingersoll-Rand Benlux  
26D Delftsestraatweg

● **Norway, Oslo 1**  
Maskin a/s K. Lund & Co.  
Revierstredet 3

● **Portugal, Lisbon**  
Ingersoll-Rand Lda.  
Apartado 2933

● **Spain, Madrid**  
Cia. Ingersoll-Rand S. A.  
Apartado 518

● **Sweden, 25 Bromma 1**  
Ingersoll-Rand AB  
Fack, S-161

● **Switzerland, Zurich CH-8023**  
Robert Aebi S. A.  
P. O. Box 2034

● **Turkey, Istanbul**  
Hamamcioglu Muesseleleri Ticaret  
T.A.S.  
P. O. Box Sisli 283

● **Yugoslavia, Zagreb**  
Brodoherkur  
Jurisicera 2/II

## AUSTRALASIA

● **Victoria, South Melbourne 3205**  
Ingersoll-Rand (Australia) Ltd.  
42 Moray Street

● **New South Wales 2065, Sydney**  
Ingersoll-Rand (Australia) Ltd.  
P. O. Box 328 Crows Nest

● **West Australia, Perth**  
Ingersoll-Rand (Australia) Ltd.  
P. O. Box 209 Cloverdale W. A. 6105

● **Queensland 4105**  
Ingersoll-Rand (Australia) Ltd.  
c/o P.O.—Moorooka, Queensland

● **South Australia, 5001 Adelaide**  
Ingersoll-Rand (Australia) Ltd.  
P. O. Box 178-C GPO

● **Tasmania, 7001 Hobart**  
Ingersoll-Rand (Australia) Ltd.  
G.P.O. Box 564-F

● **New Zealand, Auckland**  
The Fletcher Steel and Engineering  
Companies, Ltd.  
Great South Road, Penrose

## CENTRAL AMERICA and the WEST INDIES

● **Costa Rica, San Jose**  
H. T. Purdy, Inc.  
Apartado 750

● **Dominican Republic, Santo Domingo**  
Dominican Motors C por A  
Apartado 894

● **Guatemala, Guatemala City**  
Cia. Guatemalteca de Maquinaria, S. A.  
Apartado 1363

● **Haiti, Port-au-Prince**  
Charles Fequiere & Cia.  
P. O. Box 398

● **Honduras, Tegucigalpa, D. C.**  
Distribuidores de Repuestos, S. A.  
Apartado Postal No. 46

● **Jamaica, Kingston**  
R. Ehrenstein & Co., Ltd.  
P. O. Box 414

● **Netherlands West Indies, Curacao**  
S. E. L. Maduro & Son, Inc.  
P.O. Box 304

● **Nicaragua, Managua D. N.**  
Equipos y Accesorios S. A.  
Apartado 2010

● **Puerto Rico, San Juan 00936**  
Ingersoll-Rand de Puerto Rico Inc.  
P. O. Box 1222

## CENTRAL AMERICA and the WEST INDIES (Continued)

● **Republic of Panama, Panama**  
Distribuidora Sonsonate S. A.  
Apartado 10049

● **Salvador, San Salvador**  
Cia. Importadora de Maquinaria S.A.  
Calle Roosevelt y 53 Avenida

● **West Indies, Trinidad**  
Port-of-Spain  
Neal & Massy Ltd.  
P. O. Box 1298

## ASIA and The EAST

● **Abu-Dhabi (Arabian Gulf)**  
Al Nasr Trading Co.  
P. O. Box 983

● **Aden (So. Yemen)**  
Awad Salem Baobeid & Son  
P. O. Box 184

● **Afghanistan, Kabul**  
Indamer, Afghan Industries  
P. O. Box 37

● **Bahrain, Manama**  
Alawi Stores  
P. O. Box 154

● **Cambodia, Phnom-Penh**  
Mine and Construction Equipment Ltd.  
c/o China Engineers Ltd. P.O. Box 42  
Tauen Wan, Hong Kong

● **Ceylon, Colombo**  
C.I.A.S. Ltd.  
P. O. Box 610

● **Dubai, Deira (Arabian Gulf)**  
Al Nasr Trading Co.  
P. O. Box 1106

● **Hong Kong**  
China Engineers Ltd.  
P. O. Box 42 Tauen Wan

● **India, Bombay 18**  
Ingersoll-Rand (India) Private Ltd.  
P. O. Box 16564, Worli

● **India, Calcutta**  
Ingersoll-Rand (India) Private Ltd.  
7 Wellsey Pl., P. O. Box 2307

● **Indonesia, Bandung**  
P. T. Kiagoos Trading & Ind. Co.  
28-30 Djalan Karyawan

● **Indonesia, Djakarta**  
P. T. Kiagoos Trading & Ind. Co.  
P. O. Box 2107

● **Indonesia, Palembang**  
P. T. Kiagoos Trading & Ind. Co.  
Dji Djend  
Sudirman Km 4

● **Iran, Tehran**  
Shaya Company Ltd.  
P. O. Box 155

● **Iran, Tehran**  
Diesel Power Trading Co. Ltd.  
P. O. Box 1454

● **Israel, Tel-Aviv**  
Engineering & Mfg. Co. Ltd.  
7 Rothschild Blvd., P. O. Box 1191

● **Japan 107, Tokyo**  
Ingersoll-Rand (Japan) Ltd.  
Sumitomo Akasaka Bldg., 6th Floor  
3-3, 3 Chome, Akasaka  
Minato-Ku

● **Jordan, Amman**  
Industrial Supplies Co.  
P. O. Box 108

● **Korea, Seoul**  
Mine and Construction Equipment Co.  
I. P. O. Box 2016

● **Kuwait, State of Kuwait**  
Trading & Industrial Equip. Co.  
P. O. Box 2159

● **Lebanon, Beirut**  
Mideast Auto & Trading Co.  
P. O. Box 4766

● **Malaysia, Petaling Jaya**  
Ingersoll-Rand South East Asia (Pte) Ltd.  
No. 2 Jalan 215  
Selangor

● **Okinawa, Ryukyu Island**  
The China Engineers Ltd.  
Construction Equipment Div.  
C. P. O. Box 30, Naha

● **Pakistan, Karachi**  
Javed Ltd.  
19 W. Wharf Rd., P. O. Box 5191

● **Philippines, Makati, Rizal D-708**  
Ingersoll-Rand Philippines, Inc.  
P. O. Box 445

● **Qatar, Doha**  
Dawish & Co.  
P. O. Box 889

● **Saudi Arabia, Jeddah**  
Zahid Heavy Machinery Co., Ltd.  
P. O. Box 1588

● **Singapore 2**  
Ingersoll-Rand South East Asia (Pte) Ltd.  
No. 601, Maxwell House  
Maxwell Road

● **Syria, Damascus**  
Geo. R. Kaba  
19 Balkis St., P. O. Box 2205

● **Taiwan, Taipei**  
China Engineers Ltd.  
P. O. Box 1148

● **Thailand, Bangkok**  
Mine and Construction Equipment Ltd.  
P. O. Box 2775

● **S. Vietnam, Saigon**  
Construction Equipment Corp.  
P. O. Box 1224

## AFRICA

● **Republic of South Africa**  
Transvaal, Alrode via Alberton  
Ingersoll-Rand Co. So. Africa (Pty.) Ltd.  
P. O. Box 3720

● **Cape Province, Capetown**  
Ingersoll-Rand Co. So. Africa (Pty.) Ltd.  
P. O. Box 21, Eppindust

● **Cape Province, Port Elizabeth**  
Ingersoll-Rand Co. South Africa (Pty.) Ltd.  
P. O. Box 1028

● **Cape Province, Kimberley**  
Ingersoll-Rand Co. So. Africa (Pty.) Ltd.  
P. O. Box 129

● **Natal, Durban**  
Ingersoll-Rand Co. So. Africa (Pty.) Ltd.  
P. O. Box 2595

● **Orange Free State, Welkom**  
P. O. Box 374

● **Angola, Luanda**  
META S. A. R. L.  
Caixa Postal 3175

● **Egypt, Cairo**  
The Tractor & Engineering Co., S.A.E.  
P. O. Box 366

● **Ethiopia, Addis Ababa**  
The Motor & Engineering Co. of Ethiopia Ltd  
P. O. Box 1767

● **Ghana, Accra**  
Cie Francaise de L'Afrique Occidentale  
P. O. Box 2710

● **Kenya, Nairobi**  
Giffilan & Co. Ltd.  
P. O. Box 30044

● **Libya, Tripoli**  
Hussein N. Sufraiki  
P. O. Box 3283

● **Morocco, Casablanca**  
Ingersoll-Rand Maroc  
Etablissements Peggary  
29 bis, Rue Mohamed Diouri

● **Mauritius, Port Louis**  
Blyth Brothers and Co. Ltd.  
P. O. Box 56

● **Nigeria, Apapa**  
Nigerian Motor Industries, Ltd.  
P. M. Bag 1032, 26 Wharf Road

● **Portuguese East Africa, Lourenco-Marques**  
Santos Marques and Silva Limitada  
P. O. Box 166

● **Sierre Leone, Freetown**  
Cie Francaise de L'Afrique Occidentale  
P. O. Box 823

● **Senegal, Dakar**  
Compagnie Francaise de  
L'Afrique Occidentale

● **Sudan, Khartoum**  
Mahgoub M. A. & Co. Ltd.  
P. O. Box 577

● **Tunisia, Tunis**  
Mine-Usine et Comptoir des Mines Reunis  
11, Avenue de Carthage

● **Zambia, Ndola**  
Ingersoll-Rand Company, Ltd.  
P. O. Box 74