

INSTRUCTIONS AND REPAIR PART LIST

for

SIZE 92RMG10 MULTI-VANE[®] MOTOR

FOR GAS OPERATION

LUBRICATION

Always use an air line lubricator with this Motor. We recommend Ingersoll-Rand No. NFLRU-16 Filter-Lubricator-Regulator Unit. For temperatures above 30° F, use SAE 20 motor oil. For temperatures below 30° F, use SAE 10 or 10W motor oil. Set the lubricator valve to a medium feed or approximately 60 drops per minute.

After each 200 hours of operation, lubricate the gears and bearings with Ingersoll-Rand Lubricant No. 28, or a good No. 2 cup grease, as follows:

1. Remove the Gear Case Cover Cap Screws (28).
2. Grasp the Drive Shaft (26) and, as a unit, withdraw the Drive Shaft and Gear Case Cover.
3. Work some grease into both Drive Shaft Bearings (15) and the Front Rotor Bearing (23). Coat the teeth on the Drive Gear (17) and Rotor Pinion (22) with grease. Use grease sparingly. About 3 cc of grease should be sufficient for these members.
4. Replace the Gear Case Cover and Drive Shaft, and install the Gear Case Cover Cap Screws. Alternately tighten the Cap Screws to 20 ft-lb (27.1 Nm) torque.

Important: Install the cap screw at bottom dead center first. Refer to note on the sectional view.

5. **Important: Do not proceed any further unless you have two new No. 92RMG10-103 Cylinder Seals on hand.**
6. Unscrew the Housing Cover Cap Screws (2) and withdraw the Motor Housing Cover (1). Try not to separate the joint between the Housing and Gear Case and do not change the location of the Housing relative to the Cylinder.
7. Work some grease into the Rear Rotor Bearing (5).
8. If you separated the Motor Housing from the Gear Case, or changed the location of the

Housing relative to the Cylinder, carefully inspect the Cylinder Seals (9). If the Seals appear damaged in any respect, install new Seals.

9. Replace the Motor Housing Cover and install the Housing Cover Cap Screws. With the motor running at a slow speed (30 to 40 psig) (2.1 bar/207 kPa to 2.8 bar/276 kPa) alternately tighten the Screws to 20 ft-lb (27.1 Nm) torque.
10. Check the Motor for leaks by plugging the exhaust port and admitting 50 psig (3.5 bar/345 kPa) of compressed air in the inlet. Apply soap suds or oil to the joint at each end of the Motor Housing and check for bubbles.
11. If the Motor leaks, check the tightness of the Housing Cover Cap screws. If this does not correct the trouble, install new Cylinder Seals (9).

Motor Assembly

Assemble the motor as follows:

1. Slip one End Plate (7), crescent groove side first, on the splined end of the Rotor (25).
2. Slide the Front Rotor Bearing (23) on the splined hub of the Rotor and against the End Plate.
3. Slide the Rotor Pinion (22) on the splined end of the Rotor and retain it with the Rotor Pinion Retainer (21).
4. While holding the Rotor in a vertical position, grasp the Rotor Pinion in copper-covered vise jaws.
5. Place a Vane (11) in each vane slot.
6. Note that there are a series of holes drilled near the outer rim of the End Plate. Rotate the End Plate so that the centered hole (cylinder dowel hole) is facing you.
7. Place the Cylinder (8) over the Rotor so that the cylinder dowel hole in the Cylinder is to the left of the air ports and so that it lines up with the cylinder dowel hole in the End Plate.

(Continued on Page 4)

Refer All Communications to the Nearest Ingersoll-Rand Branch Office or Distributor.

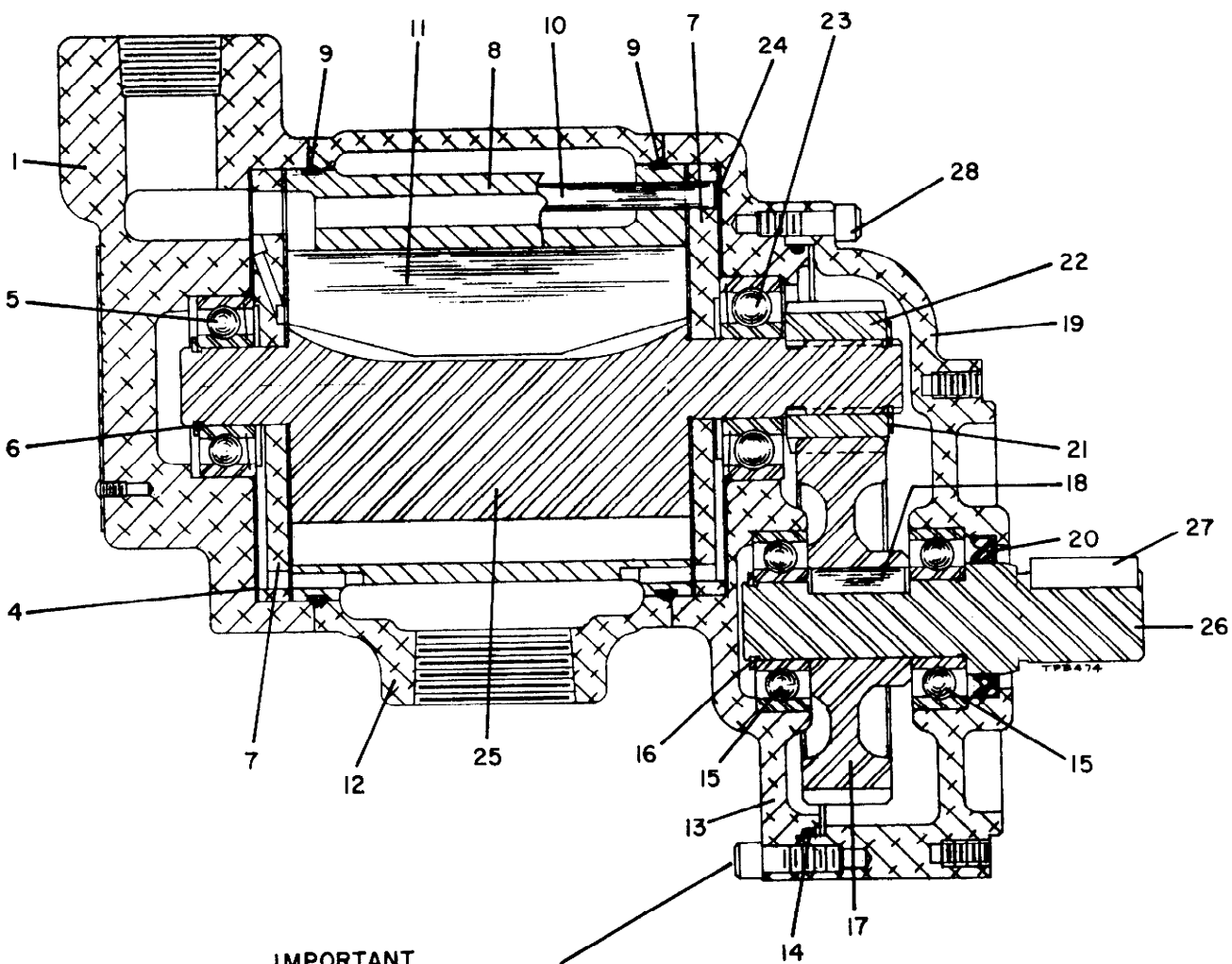
© Ingersoll-Rand Company 1976

Printed in U.S.A.



Ingersoll-Rand

Ingersoll-Rand



IMPORTANT
 WHEN INSTALLING THE GEAR CASE
 COVER, INSTALL THIS CAP SCREW
 (BOTTOM DEAD CENTER) FIRST

REPAIR PART LIST

ILLUSTRATION NUMBER (Do not use for ordering)	PART NAME FOR ORDERING (Parts indented after an item are included with that item)	PART NUMBER FOR ORDERING
1	Motor Housing Cover	92RMG10-102
*	Motor Housing Cover Cap Screw (4)	12BMP-634
*	Cover Cap Screw Lock Washer (copper) (4)	D02-504
4	Motor Housing Cover Gasket	10BM-283
5	Rear Rotor Bearing (AFBMA No. 20BC02JP)	92RMG10-22
6	Rear Rotor Bearing Retainer	R380Q-6
7	End Plate (2)	92RMG10-11
8	Cylinder Assembly	92RMG10-A3
9	Cylinder Seal (2)	92RMG10-103
10	Cylinder Dowel	205-1098
11	Vane Packet (set of 5)	R5H-42-5
12	Motor Housing	92RMG10-40
13	Gear Case Assembly	92RMG10-A37
14	Gear Case Cover Seal	92RMG10-607
15	Drive Shaft Bearing (AFBMA No. 20BC02) (2)	T02-33
16	Drive Shaft Retainer	R380Q-6
17	Drive Gear	92RMG10-9
18	Drive Gear Key	10BM-610
19	Gear Case Cover Assembly	92RMG10-A478
20	Drive Shaft Grease Seal	150RMG14-271
21	Rotor Pinion Retainer	10BM-69
22	Rotor Pinion	101BMPD-17
23	Front Rotor Bearing (AFBMA No. 20BC03JP)	555-24
24	Gear Case Gasket	10BM-284
25	Rotor	92RMG10-53
26	Drive Shaft	92RMG10-8
27	Drive Shaft Key	205-61
28	Gear Case Cover Cap Screw (8)	510-638

* Not illustrated.

HOW TO ORDER

Order all repair parts for your Ingersoll-Rand Tool by the **NAME** and **NUMBER** shown in the Repair Part List section. **Never** use the illustration numbers which appear in the first column.

For prompt service and genuine Ingersoll-Rand parts, place orders with the nearest Ingersoll-Rand Branch Office or Authorized Distributor.

Notice: The use of other than genuine Ingersoll-Rand replacement parts may result in decreased tool performance and increased maintenance, and may, at the Company's option, invalidate all warranties.

(Continued from Page 1)

8. Slide the other End Plate, crescent grooved side first on the short hub of the Rotor. Rotate it so that the cylinder dowel hole is aligned with the corresponding hole in the Cylinder.
9. Slide the Rear Rotor Bearing (5) on the short hub of the Rotor and against the End Plate. Retain it with the Rear Rotor Bearing Retainer (6).

10. After the complete unit has been assembled, check the direction of drive shaft rotation by admitting live air to the inlet. When facing the drive shaft end of the Motor, the Drive Shaft should rotate counter-clockwise. If the direction of rotation is incorrect, disassemble the Motor and turn the Cylinder (8) end for end.

● **Atlanta, Ga.**
111 Ingersoll-Rand Drive
Chamblee, Georgia 30341
★ **Baton Rouge, La.** 70816
4152 Rhoda Drive
★ **Beaumont, Texas** 77640
5336 Twin City Highway
Port Arthur, Texas
★ **Birmingham, Ala.** 35233
1516 Second Ave., South
★ **Buffalo, N. Y.** 14225
195 Sugg Rd.
● **Charlotte, N. C.** 28208
4840 Wilmont Rd.
● **Chicago, Ill.**
888 Industrial Drive
Elmhurst, Illinois 60126

● **Cincinnati, Ohio**
666 Redna Terrace
Woodlawn, Ohio 45215
● **Cleveland, Ohio** 44125
9257 Midwest Ave.
★ **Corpus Christi, Texas** 78408
4540 Baldwin Blvd.
● **Dallas, Texas** 75247
8901 Directors Row
● **Denver, Colo.** 80207
5805 E. 39th Ave.
● **Detroit, Mich.**
22122 Telegraph Road
Southfield, Mich. 48075
● **Hartford, Conn.** 06114
203 Locust St.

Ingersoll-Rand®

Tool & Hoist Division
28 Kennedy Blvd.
East Brunswick, N. J. 08816

● **Houston, Texas** 77001
6800 Sands Point, P.O. 1455
★ **Indianapolis, Ind.** 46268
5315 West 86th St.
Kansas City, Mo. 64114
8900 Ward Parkway
● **Los Angeles, Calif.** 90022
5533 East Olympic Blvd.

● **Memphis, Tenn.** 38116
1231 E. Raines Rd.
P.O. Box 16248
Whitehaven Station
● **Milwaukee, Wis.** 53225
12311 W. Silver Springs Dr.
● **Minneapolis, Minn.** 55404
Corner Franklin and Cedar

● **Newark, N. J.**
28 Kennedy Blvd.
East Brunswick, N. J. 08816
● **New Orleans, La.** 70005
939 Lake Ave. Metairie
● **Philadelphia, Pa.**
651 Park Ave.
King of Prussia, Pa. 19406
● **Pittsburgh, Pa.** 15220
6 Parkway Ctr.
★ **Portland, Oregon** 97214
240 S. E. Clay St.
★ **Richmond, Va.** 23230
3431 West Leigh St.

● **San Francisco, Calif.**
14299 Wicks Blvd.
San Leandro, Calif. 94577
★ **Schenectady, N. Y.**
8 Sarnoskie Drive
Scotia, N. Y. 12302
● **Seattle, Wash.** 98188
345 Andover Park East
● **St. Louis, Mo.** 63132
1515 Page Industrial Blvd.
★ **Tampa, Fla.** 33609
3316 South Westshore Blvd.
★ **Tulsa, Oklahoma** 74135
6106 E. 32 Place
Washington, D. C. 20006
1666 K. St., N. W.

● Branch and All-Star Servicer.
★ All-Star Servicer only.

● **Moline, Ill.** 61265
3901 25 St.

CANADA

Calgary, Alberta, T2R 0E1
611 11th. Ave., S. W.

Montreal, Quebec
620 Cathcart St., H3B 1M2
P.O. Box 1148, H3B 3K9

Canadian Ingersoll-Rand Co., Limited
Montreal, Quebec
620 Cathcart St., H3B 1M2
P.O. Box 610, Station B H3B 3K3

Sudbury, Ontario, P3A 3T3
P. O. Box 2220

● **Vancouver, British Columbia, V6A 2W7**
1695 Main St.

Edmonton, Alberta, T5L 2Y3
14530 123rd. Ave.

● **Sherbrooke, Quebec, J1H 3X4**
375 Courcellette St.

● **Toronto**
Don Mills, Ontario M3B 2V1
255 Lesmill Road

Winnipeg, Manitoba, R3H 0M6
1234 Border St.

● All-Star Servicer

9-G5

AUTONOMOUS COMPANIES

Argentina, Buenos Aires
Ingersoll-Rand Argentina
S. A. I. y C.
Casilla Correo 2412, Correo Central

Australia, South Melbourne
Ingersoll-Rand (Australia) Ltd.
42 Moray Street, 3205 Victoria

Austria A 1120, Vienna
Ingersoll-Rand Ges M. B. H.
Schoenbrunnerstrasse 213-215/2/5

Belgium, B-1920 Diegem
Ingersoll-Rand Benelux
Kouterstraat 10-12

Brazil, Sao Bernardo
Ingersoll-Rand S.A. Ind. e Com.
Caixa Postal 911

Colombia, Bogota
Maquinarias Ingersoll-Rand
de Colombia, S. A.
Apartado Aero 7451

Denmark, Albertslund DK2620
Ingersoll-Rand AB
Herstedvang 11

England, London, SW1X 7LU
Ingersoll-Rand Co., Ltd.
Bowater House, Knightsbridge

France, 78 190 Trappes Yvelines
Compagnie Ingersoll-Rand
Avenue Albert Einstein
Zone Industrielle

Germany, 403 Ratingen
Ingersoll-Rand GmbH
Robt. Zapp Str.
Postfach 1380

Hong Kong
Ingersoll-Rand Far East
Room 203, Asian House
1, Hennessy Road

India, Bombay 400018
Ingersoll-Rand (India) Private Ltd.
44 Maulana Abdul Gaffar Rd.
P. O. Box 16564, Worli

Ireland, Dublin
Ingersoll-Rand Company (Ireland) Ltd.
John F. Kennedy Drive
Bluebell

Italy, Milano
Ingersoll-Rand Italiana, S.p.A.
Strada Provinciale Cassanese
20060 Vignate, Italy

Japan, 106 Tokyo
Ingersoll-Rand (Japan) Ltd.
Kowa Bldg. No. 17
2-7 Nishi-Azabu 1-Chome
Minato-Ku

Kenya, Nairobi
Ingersoll-Rand Mid-Africa
P. O. Box 14240

Lebanon, Beirut
Ingersoll-Rand Middle East
P. O. Box 11-7031

Malaysia, Petaling Jaya
Ingersoll-Rand Malaysia Sdn. Bhd.

Mexico, 10 D. F. Mexico
Ingersoll-Rand S. A. de C. V.
Apartado 41-666

Netherlands, Pijnacker
Ingersoll-Rand Benelux
26D Delftsestraatweg

Peru, Lima
Ingersoll-Rand Co. of Peru, S.A.
Casilla 2261

Philippines, Makati, Rizal 3117
Ingersoll-Rand Philippines, Inc.
P. O. Box 445 MCC

Portugal, Lisbon 5
Ingersoll-Rand Lda.
Apartado 2933

Puerto Rico, San Juan 00936
Ingersoll-Rand de Puerto Rico Inc.
G. P. O. Box 1222

Republic of South Africa
Transvaal, Alrode via Alberton
Ingersoll-Rand Co. So. Africa (Pty.) Ltd.
P. O. Box 3720

Singapore, 1
Ingersoll-Rand So. East Asia (Pte) Ltd.
G. P. O. Box 2062

Spain, Madrid
Cia. Ingersoll-Rand, S. A.
Apartado 518

Sweden, Bromma
Ingersoll-Rand AB
Gardsfogdevagen, 14

Venezuela, Caracas
Ingersoll-Rand de Venezuela S.A.
Apartado Postal 70588 Los Ruices

Zambia, Ndola
Ingersoll-Rand Company, Ltd.
P. O. Box 74

Distributors in principal cities throughout the world. Contact the nearest Ingersoll-Rand office for the name and address of the distributor in your country or write to Ingersoll-Rand International, Woodcliff Lake, New Jersey.

5 03