

SIZES C6CA15 and C6CA25 OVERHEAD HOISTS

SPECIFICATIONS

(Performance figures are at 80 psi or 5.6 kg/cm² air pressure)

Size	C6CA15	C6CA25
Maximum Lift:		
ft.....	15	25
m.....	4.57	7.62
Rate of Lift with Rated Load:		
ft/min.....	45	40
m/min.....	13.7	12.2
Capacity, tons.....	1	1
Reeving Arrangement.....	2-Part Single	
Diameter of Wire Rope, ins.....	1/4	5/16
Weight, lbs		
Lug Mounted.....	355	350
With Top Hook.....	365	360
With Plain Trolley.....	400	395
With Hand Chain Trolley.....	430	425
Weight, kg		
Lug Mounted.....	161	159
With Top Hook.....	166	163
With Plain Trolley.....	182	179
With Hand Chain Trolley.....	195	193
Hose Connection Pipe Tap, ins.....	3/4	
Size Hose Recommended:		
ins.....	1	
mm.....	25	
Cubic Feet of Air per Foot of Lift with Rated Load.....	3.3	
Cubic Meters of Air per Meter of Lift with Rated Load.....	.295	

Note:—Reduce rate of lift 5% for Long or Metric Tons.

HOW TO ORDER

When ordering a C6CA15 or C6CA25 Hoist, specify the following:

- Hoist Size**—C6CA15 or C6CA25
- Type of Mounting**—Lug, top hook, plain trolley, hand chain trolley or motor driven trolley. Lug mounting will be furnished unless otherwise specified.
- Type of Controls**—Pull chain throttle, pendent throttle or remote control. Pull chain throttle will be furnished unless otherwise specified.
- If Pendent Throttle is ordered**, specify the length of control desired. 5 foot length furnished unless otherwise specified. Lengths up to and including 15 feet furnished at no extra price.
- If Hoist is Trolley mounted**, specify the type of beam, size and flange width, or make and size of Flat-Tread Monorail and flange width.
- Type of Brake**—diaphragm, mechanical load or dual (both diaphragm and mechanical load). Diaphragm brake furnished unless otherwise specified.
- If Top Hook is ordered**, specify open type or safety type. Open type furnished unless otherwise specified.
- Type of Bottom Hook**—open type, safety type or Bullard-Burnham Safety. Open type furnished unless otherwise specified.

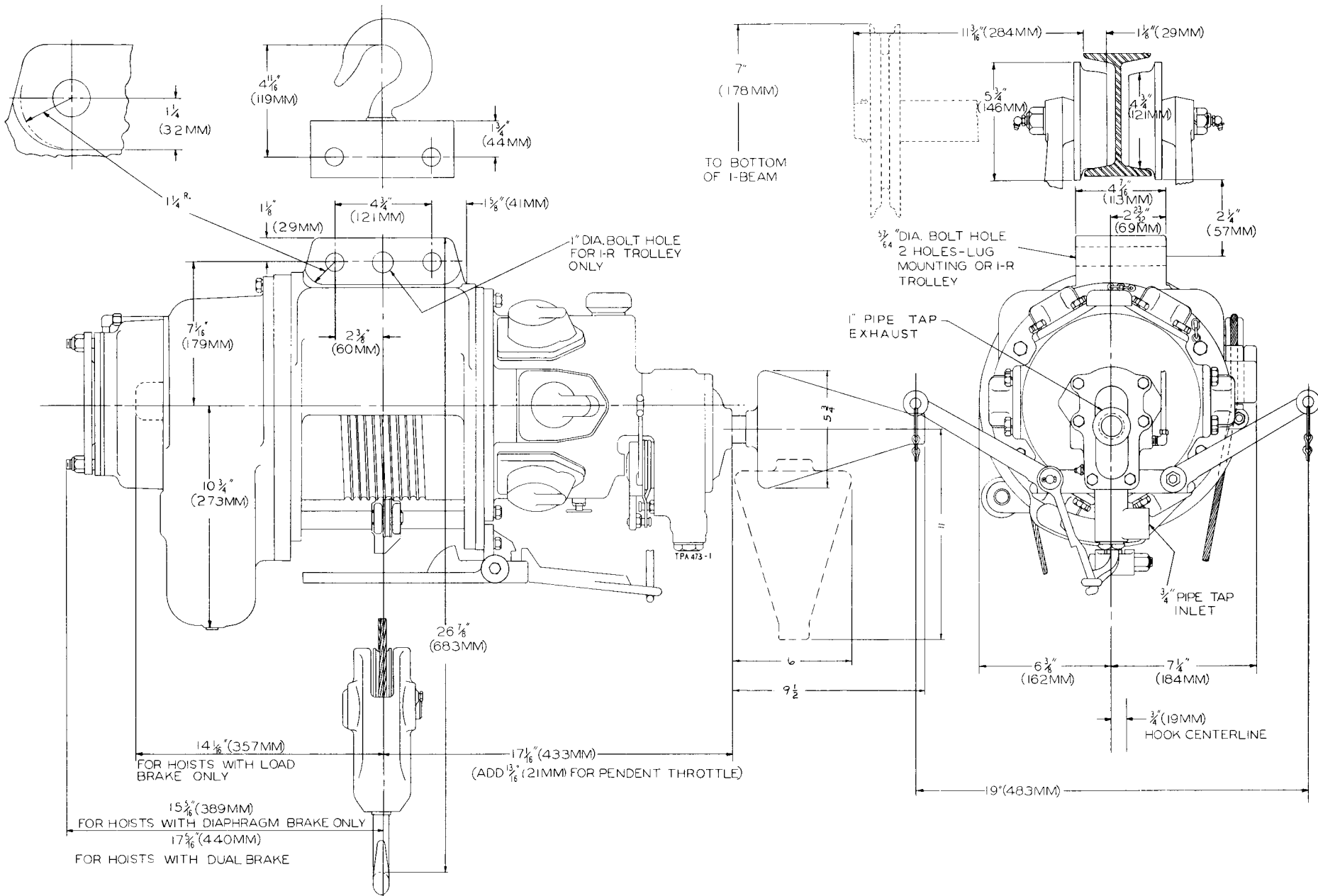
EQUIPMENT AVAILABLE AT EXTRA PRICE

Order the following items by complete part number and part name.

- No. D02-444B 90° Angle Attachment
- No. EU-A267 Air Strainer Assembly
- No. D02-674A Muffler Assembly

**THESE HOISTS ARE NOT TO BE USED
FOR LIFTING OR LOWERING PEOPLE**





NOTE: USE OF D02-444B 90° ANGLE ATTACHMENT INCREASES HEADROOM 3"
 NOT RECOMMENDED WITH HAND CHAIN TROLLEY

DIMENSIONS OF SIZES C6CA15 AND C6CA25 OVERHEAD HOISTS