

REPAIR PART LIST

OVERHEAD HOISTS

**Sizes D and D6 Standard Hoists
and
DN, DQ, DR, DX, DZ, D6R and D6Z Long Lift Hoists**

HOW TO ORDER

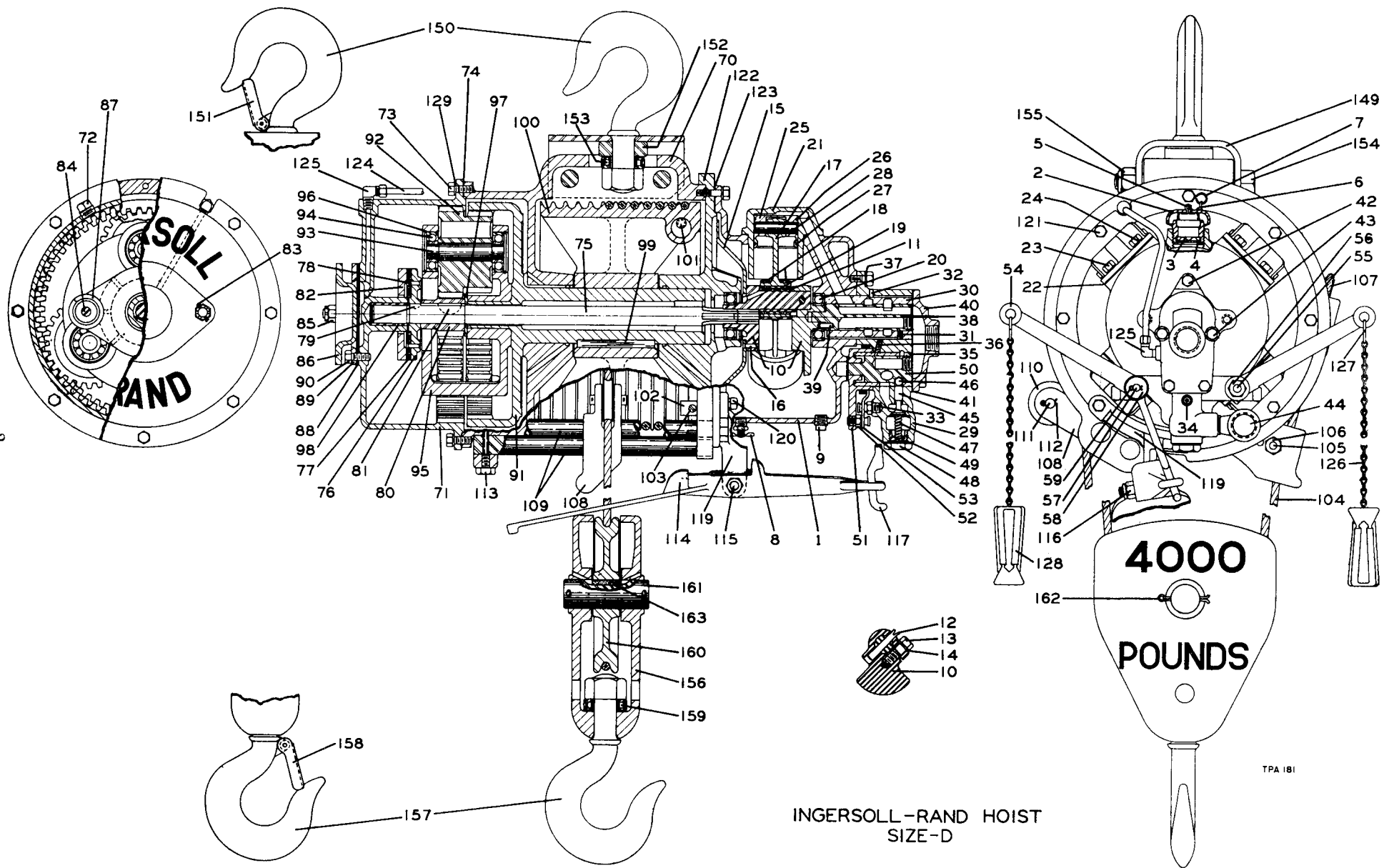
Order all repair parts for your Ingersoll-Rand Tool by the **NAME** and **NUMBER** shown in the Repair Part List section. **Never** use the illustration numbers which appear in the first column.

For prompt service and genuine Ingersoll-Rand parts, place orders with the nearest Ingersoll-Rand Branch Office.

Notice: The use of other than genuine Ingersoll-Rand replacement parts may result in decreased tool performance and increased maintenance, and may, at the Company's option, invalidate all warranties.



2



INGERSOLL-RAND HOIST
SIZE-D

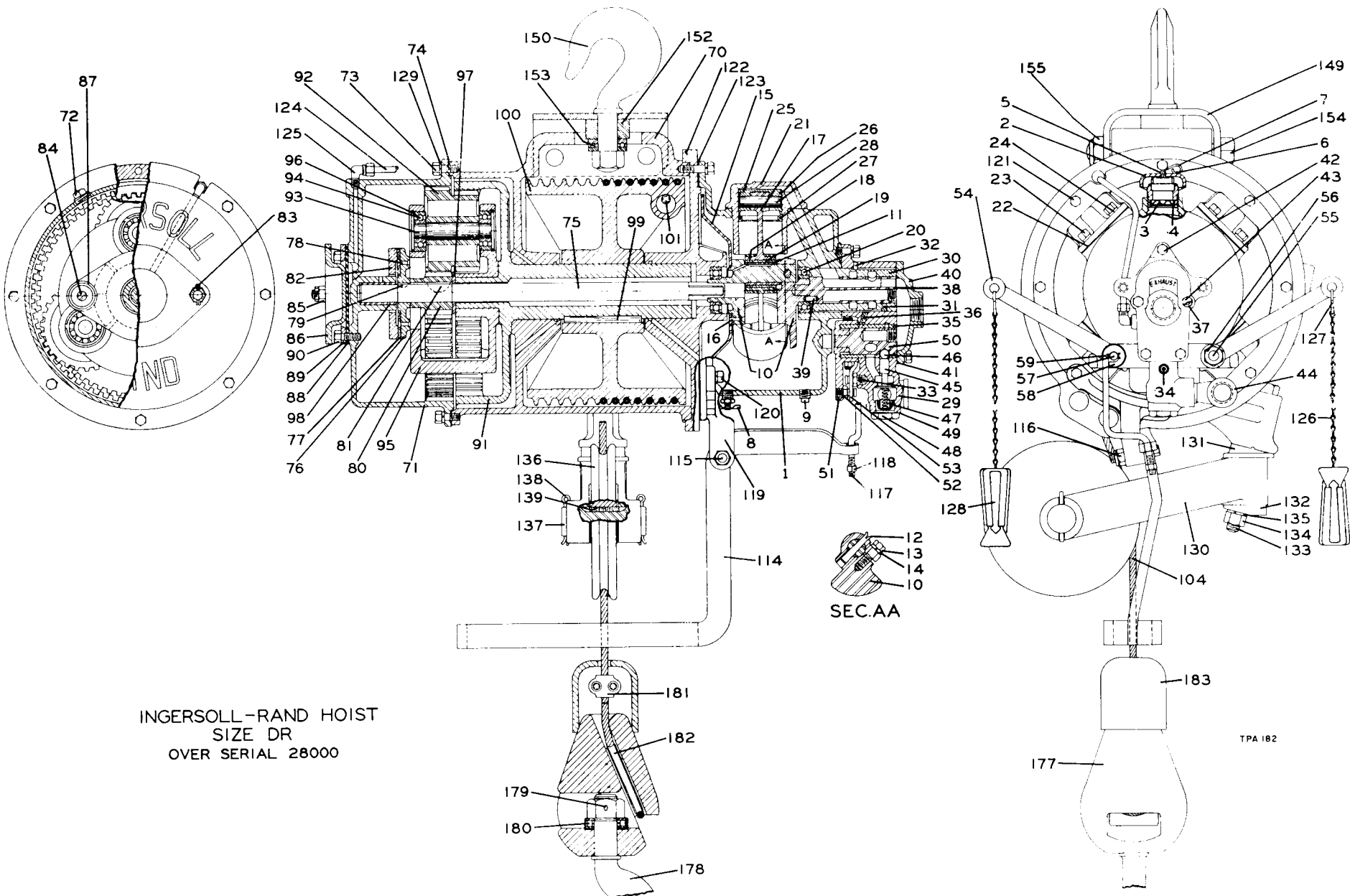
TPA 181

MOTOR PARTS

ILLUSTRATION NUMBER (Do not use for ordering)	PART NAME FOR ORDERING Parts Indented After An Item Are Included With That Item	PART NUMBER FOR ORDERING	
		Series D	Series D6
	Motor Assembly (See footnote No. 1 on page 5).....	D04-A501A	D06-A501A
★ 1	Motor Case (See footnote No. 1 on page 5).....	D02-501A	D02-501A
2	Vent Cap.....	D02-303A	D02-303A
3	Vent Cap Screen.....	D02-889	D02-889
4	Vent Cap Screen Retainer.....	6CND-233-1/2	6CND-233-1/2
5	Vent Cap Cotter.....	D02-893	D02-893
6	Vent Cap Chain.....	D02-891	D02-891
7	S-Hook.....	D02-421	D02-421
8	Oil Cock (2).....	D02-308	D02-308
9	Drain Plug.....	D02-402	D02-402
	Crank Assembly	D04-A516	D06-A516
10	Crank Bare (Consists of two matched pieces, neither of which are sold separately).....	D04-516	D06-516
11	Crank Pin Sleeve.....	D02-519	D02-519
12	Crank Taper Pin.....	D02-520	D02-520
13	Crank Pinch Bolt.....	D02-521	D02-521
14	Crank Pinch Bolt Lock Washer.....	D02-537	D02-537
15	Oil Splasher.....	D04-540	D04-540
16	Oil Splasher Rivet (3).....	D02-541	D06-541
*	Crank Counterweight Rivet (2).....	- - - -	D06-554
*	Crank Counterweight.....	- - - -	D06-515
17	Connecting Rod (4).....	D04-509	D04-509
18	Connecting Rod Ring (2).....	D02-510	D02-510
19	Connecting Rod Bushing.....	D02-511	D02-511
20	Crank Bearing (2) (AFBMA No. 30BC02).....	TA-22	TA-22
21	Cylinder (4).....	D04-505	D06-505
22	Cylinder Gasket (4).....	D02-507	D02-507
23	Cylinder Cap Screw (16).....	D02-506	D02-506
24	Cylinder Cap Screw Washer (16).....	D02-504	D02-504
25	Piston (4).....	D6H60A-A513	D06-513A
26	Piston Ring (1 for each Piston).....	D04-337A	D06-337
27	Oil Regulating Piston Ring (1 for each Piston).....	D04-338	D06-338
28	Piston Wrist Pin (4).....	D04-514	D06-514

*Not illustrated.

★ Always specify complete size symbol of the Hoist when ordering a repair Motor Case (so that the correct size symbol can be stamped on the name plate).



INGERSOLL-RAND HOIST
 SIZE DR
 OVER SERIAL 28000

TPA 182

MOTOR PARTS

ILLUS. NUMBER (Do not use for ordering)	PART NAME FOR ORDERING Parts Indented After An Item Are Included With That Item	PART NUMBER FOR ORDERING	
		Series D	Series D6
†	Valve Chest Assembly (If ordered for replacement for old style Valve Chest, Part D02-555 should also be ordered).....	D02-A545A	D02-A545A
●29	Valve Chest.....	D02-545A	D02-545A
●30	Rotary Valve Bushing.....	D02-525A	D02-525A
●31	Valve Oiler.....	JA4-75	JA4-75
●32	Bushing Key (2).....	D02-538	D02-538
●33	Throttle Lever Spring Stop Pin.....	D02-553	D02-553
●34	Valve Chest Grease Fitting.....	R1-188	R1-188
●35	Reverse Valve Bushing.....	D02-945	D02-945
●36	Valve Oiler.....	JA4-75	JA4-75
37	3/8" Lock Washer (5).....	D02-321	D02-321
●38	Rotary Valve.....	D02-526	D02-526
●39	Valve Drive Pin.....	D02-527	D02-527
●40	Valve Chest Cover.....	D02-546A	D02-546A
●41	Valve Chest Cover Gasket.....	D02-928	D02-928
●42	Valve Chest Short Screw (3).....	D02-506	D02-506
●43	Valve Chest Long Screw (2).....	D02-548	D02-548
●44	Inlet Ell.....	DU-581	DU-581
●45	Poppet Throttle Valve.....	D02-940	D02-940
●46	Throttle Valve Ball (1/2" dia. steel ball).....	D10-280	D10-280
●47	Throttle Valve Spring.....	B01-11	B01-11
●48	Throttle Valve Cap.....	D02-943	D02-943
●49	Throttle Valve Cap Gasket.....	G601-411	G601-411
●50	Reverse Valve.....	D02-944	D02-944
●51	Throttle Control Arm.....	D02-555	D02-555
●52	Throttle Spring Stop Pin.....	D02-553	D02-553
●53	Throttle Lever Spring.....	D02-412B	D02-412B
54	Throttle Lever (2).....	D02-556	D0 2-556
55	Throttle Lever Bolt.....	D02-411A	D02-411A
56	Throttle Lever Bolt Nut (2).....	D02-418A	D02-418A
57	Stop Link Bolt.....	D02-523	D02-523
58	Stop Link Bolt Washer.....	D0 2-419	D02-419
59	Stop Link Bolt Cotter (3/32" x 3/4").....	D02-524	D02-524

†Can be used as a replacement for the Valve Chest Assembly with "taper-plug" type Throttle Valve with which Hoists under serial 28,000 were equipped. A new style Throttle Control Arm(51) must also be purchased and installed when making this conversion. Neither the old style Valve Chest Assembly nor any of its components are available.

●Not available for Hoists with "taper-plug" Throttle Valve. Order a Valve Chest Assembly and Control Arm. See preceding note.

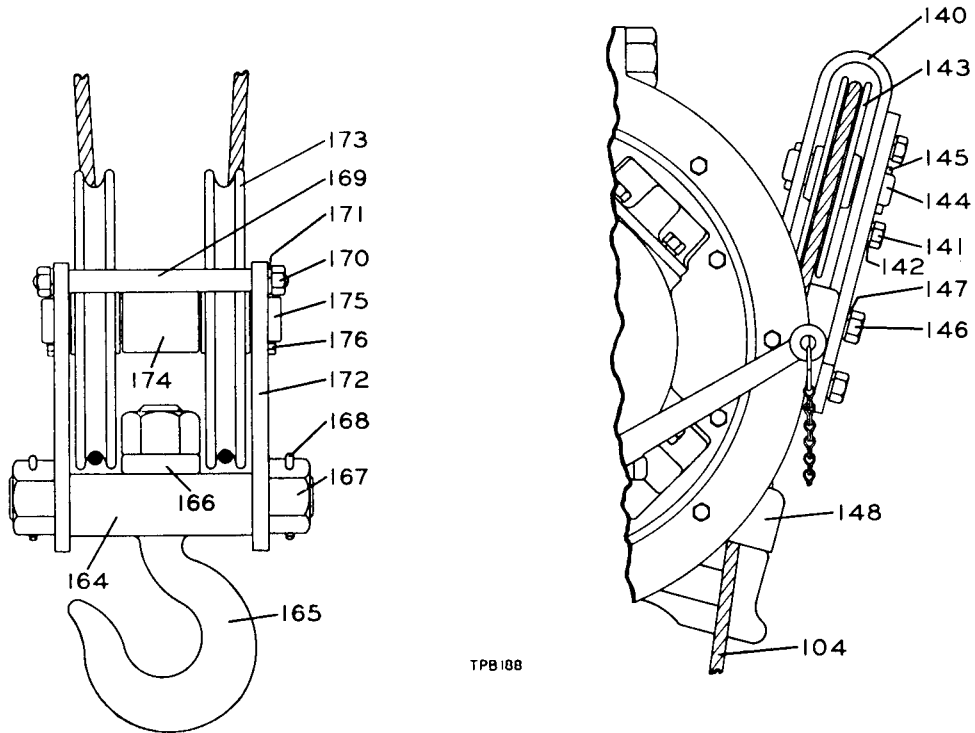
Footnote No. 1 - These Hoists now use a Stop Lever Bracket (119) which is attached to the flange on the Motor Case (1) with two Stop Lever Bracket Screws (120). Previously the bracket was cast integral with the Motor Case (1). When ordering a Motor Assembly or Motor Case, also order the Bracket and two Screws if the bracket is integral with the Motor Case that is to be replaced. Also order a Motor Case Cover (122), Brake Pipe (124) and Stop Lever Link (117) if the motor being replaced is under serial 13,000.

HOIST PARTS

ILLUSTRATION NUMBER (Do not use for ordering)	PART NAME FOR ORDERING Parts Indented After An Item Are Included With That Item	PART NUMBER FOR ORDERING					
		SIZES D, DN DQ,	SIZES DR, DW, DX	SIZE DZ	SIZE D6	SIZE D6R	SIZE D6Z
70	Hoist Housing.....	D06-300A	D06W-300A	D06Z-300	D06-300A	D06W-300A	D06Z-300
*	Grease Plug.....	D02-351	D02-351	D02-351	D02-351	D02-351	D02-351
71	Gear Case.....	D04-353	D04-353	D04-353	D04-353	D04-353	D04-353
72	Grease Plug (2).....	D02-351	D02-351	D02-351	D02-351	B02-351	D02-351
73	Gear Case Screw (8).....	D02-354	D02-354	D02-354	D02-354	D02-354	D02-354
74	Gear Case Gasket.....	D04-931	D04-931	D04-931	D04-931	D04-931	D04-931
	Motor Shaft Assembly.....	D04-A316A	D04-A316A	D04-A316A	D04-A316A	D04-A316A	D04-A316A
75	Motor Shaft.....	D04-316A	D04-316A	D04-316A	D04-316A	D04-316A	D04-316A
76	Brake Disc.....	D02-388	D02-388	D02-388	D02-388	D02-388	D02-388
77	Brake Facing.....	D02-385	D02-385	D02-385	D02-385	D02-385	D02-385
78	Brake Facing Rivet (4).....	D02-398	D02-398	D02-398	D02-398	D02-398	D02-398
79	Brake Disc Key.....	TC-18	TC-18	TC-18	TC-18 *	TC-18	TC-18
80	Motor Shaft Pinion.....	D04-319	D04-319	D04-319	D04-319	D04-319	D04-319
81	Motor Shaft Pinion Key.....	D04-320	D04-320	D04-320	D04-320	D04-320	D04-320
82	Brake Plate.....	D02-389	D02-389	D02-389	D02-389	D02-389	D02-389
83	Brake Bolt Cotter (3/32" x 3/4") (2).....	D02-524	D02-524	D02-524	D02-524	D02-524	D02-524
84	Brake Bolt (2).....	D02-392	D02-392	D02-392	D02-392	D02-392	D02-392
85	Brake Bolt Nut (2).....	D02-394	D02-394	D02-394	D02-394	D02-394	D02-394
86	Brake Plunger.....	D02-391	D02-391	D02-391	D02-391	D02-391	D02-391
87	Brake Spring (2).....	D02-393	D02-393	D02-393	D02-393	D02-393	D02-393
88	Brake Diaphragm.....	D02-390	D02-390	D02-390	D02-390	D02-390	D02-390
89	Brake Diaphragm Ring.....	D02-395	D02-395	D02-395	D02-395	D02-395	D02-395
90	Brake Diaphragm Screw (8).....	D02-506	D02-506	D02-506	D02-506	D02-506	D02-506
91	Drum Gear.....	D04-357	D04-357	D04-357	D06-357	D06-357	D0 6-357
	Intermediate Gear Frame Assembly.....	D06-A367	D06-A367	D06-A367	D06-A367	D06-A367	D06-A367
92	Intermediate Gear (3).....	D04-364	D04-364	D04-364	D06-364	D06-364	D06-364
93	Intermediate Gear Shaft (3).....	D04-365	D04-365	D04-365	D04-365	D04-365	D04-365
94	Intermediate Gear Shaft Bearing (AFBMA No. 20BL03) (6).....	D04-366	D04-366	D04-366	D04-366	D04-366	D04-366
95	Intermediate Gear Frame.....	D04-367	D04-367	D04-367	D04-367	D04-367	D04-367
96	Bearing Retaining Spring (6).....	D04-340	D04-340	D04-340	D04-340	D04-340	D04-340
97	Pinion Thrust Washer.....	D04-397	D04-397	D04-397	D04-397	D04-397	D04-397
98	Gear Case Bushing.....	D04-355	D04-355	D04-355	D04-355	D04-355	D04-355
99	Rope Drum Key.....	D04-323	D04-323	D04-323	D04-323	D04-323	D04-323
100	Rope Drum						
	Grooved Type						
	For Sizes D, DR, D6 and D6R.....	D04-371	D04-371	-----	D06-371	D06-371	-----
	Spool Type						
	For Sizes DN, DQ, DW, DX, DZ and D6Z.....	D04-324	D04-324	D04Z-324A	-----	-----	D04Z-324A
101	Rope Set Screw(1 for Sizes D, DR, D6 and D6R; 4 for Sizes DZ and D6Z).....	D01-381B	D01-381B	D04-650	D01-381B	D01-381B	D04-650
102	Rope Clip (For sizes D, DR, D6 and D6R).....	D06-949	D06-949	-----	D06-949	D06-949	-----
103	Rope Clip Screw (for Sizes D, DR, D6 and D6R) (2).....	D02-950	D02-950	-----	D02-950	D02-950	-----
104	Wire Rope						
	For Sizes D, DR, DZ, D6, D6R and D6Z.....	D04-372	D04R-372	D04Z-372	D06-372	D06R-372	D04Z-372
	For Sizes DN and DW.....	D04N-372	D04N-372	-----	-----	-----	-----
	For Sizes DQ, and DX.....	D04Q-372	D04Q-372	-----	-----	-----	-----

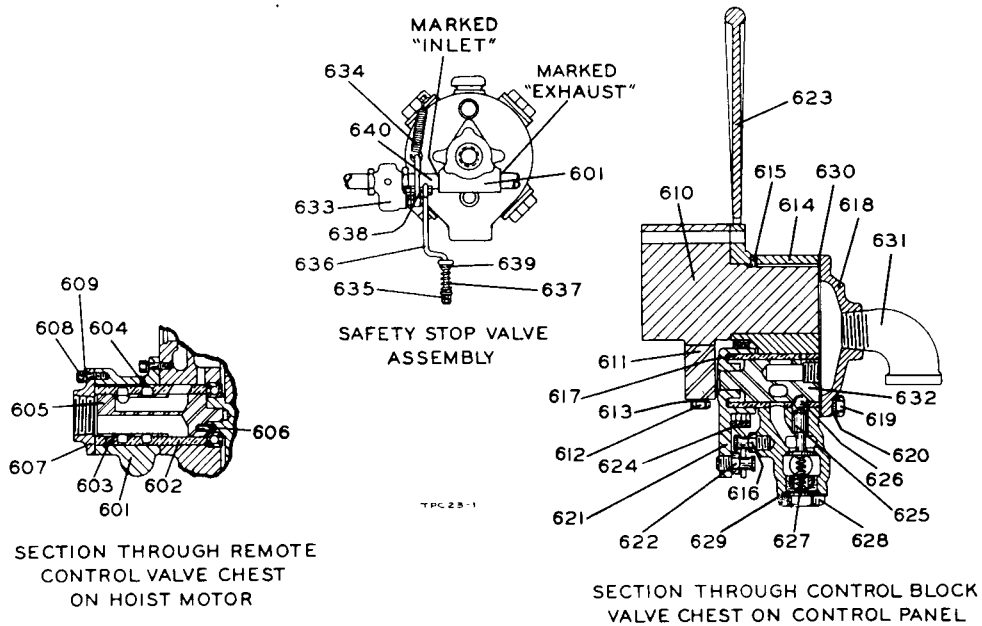
ILLUSTRATION NUMBER (Do not use for ordering)	PART NAME FOR ORDERING Parts Indented After An Item Are Included With That Item	PART NUMBER FOR ORDERING					
		SIZES D, DN DQ	SIZES DR, DW, DX	SIZE DZ	SIZE D6	SIZE D6R	SIZE D6Z
105	Wire Rope Clamp.....	D02-375	-----	-----	D02-375	-----	-----
106	Rope Clamp Nut.....	D02-418	-----	-----	D02-418	-----	-----
107	Rope Wedge.....	D02-373	-----	-----	D02-373	-----	-----
108	Rope Guide (used beginning serial 18,500) (for Sizes D and D6)..	D04-790	-----	-----	D06-790	-----	-----
109	Rope Guide Rod (2)(used beginning serial 18,500) (for Sizes D and D6).....	D04-791	-----	-----	D04-791	-----	-----
110	Rope Guide Roller(used beginning serial 18,500) (for Sizes D and D6).....	D02-792	-----	-----	D02-792	-----	-----
111	Guide Roller Pin (used beginning serial 18,500) (for Sizes D and D6).....	D02-793	-----	-----	D02-793	-----	-----
112	Roller Pin Cotter (2) (used beginning serial 18,500) (for Sizes D and D6).....	D02-524	-----	-----	D02-524	-----	-----
113	Guide Rod Retainer Screw (2) (used beginning serial 18,500) (for Sizes D and D6).....	D04-795	-----	-----	D04-795	-----	-----
114	Safety Stop Lever For Sizes D and D6.....	D02-422B	-----	-----	D02-422B	-----	-----
	For Sizes DN, DQ, DR, DW, DX, DZ, D6R and D6Z.	D04-422A	D02-465A	D02-422A	-----	D02-465A	D02-422A
115	Stop Lever Bolt.....	D10-354A	D10-354A	D10-354A	D10-354A	D10-354A	D10-354A
116	Stop Lever Bolt Nut.....	D02-904	D02-904	D02-904	D02-904	D02-904	D02-904
117	Stop Lever Link For D and D6 Hoists serial over 18,500.....	D10-424B	-----	-----	D10-424B	-----	-----
	For DN, DQ, DR, DW, DX, D6R, DZ and D6Z.....	D02W-424	D02W-424	D04Z-424	-----	D02W-424	D04Z-424
118	Stop Lever Link Nut (Not used on Sizes D and D6 over serial 18,500).....	D02-428	D02-428	D02-428	D02-428	D02-428	D02-428
119	Stop Lever Bracket.....	D02-905	D02-905	D02-905	D02-905	D02-905	D02-905
120	Stop Lever Bracket Screw (2).....	D02-906	D02-906	D02-906	D02-906	D02-906	D02-906
121	Motor Case Screws (6).....	D02-312	D02-312	D02-312	D02-312	D02-312	D02-312
*	Motor Case Screw Nut.....	D02-418	D02-418	D02-418	D02-418	D02-418	D02-418
122	Motor Case Cover.....	D04-502	D04-502	D04Z-502	D04-502	D04-502	D04Z-502
123	Motor Case Cover Gasket.....	D02-592	D02-592	D02-592	D02-592	D02-592	D02-592
124	Brake Pipe.....	D04-401A	D04-401A	D04-401A	D04-401A	D04-401A	D04-401A
125	Brake Pipe Elbow (2) (includes Connector).....	D02-400	D02-400	D02-400	D02-400	D02-400	D02-400
126	Throttle Lever Chain (2) For Sizes D, DR, DZ, D6, D6R and D6Z.....	D02-413	D01Q-413	D02X-413	D02-413	D06R-413	D02X-413
	For Sizes DN and DW.....	D01Q-413	D02W-413	-----	-----	-----	-----
	For Sizes DQ and DX.....	D02Q-413	D02X-413	-----	-----	-----	-----
127	S-Hook (2 for each Chain).....	D02-421	D02-421	D02-421	D02-421	D02-421	D02-421
128	Pull Chain Throttle Handle (2).....	MR-415	MR-415	MR-415	MR-415	MR-415	MR-415
129	3/8" Lock Washer (16).....	D02-321	D02-321	D02-321	D02-321	D02-321	D02-321
130	Swivel Arm.....	-----	D04-460	-----	-----	D04-460	-----
131	Swivel Adapter.....	-----	D02-461	-----	-----	D02-461	-----
132	Swivel Adapter Cap.....	-----	D02-462	-----	-----	D02-462	-----
133	Swivel Bolt.....	-----	D01-694	-----	-----	D01-694	-----
134	Swivel Bolt Nut.....	-----	HU-776	-----	-----	HU-776	-----
135	Swivel Bolt Lock Washer.....	-----	A-67	-----	-----	A-67	-----
136	Sheave.....	-----	D04-380	-----	-----	D04-380	-----
137	Sheave Shaft.....	-----	D04-382	-----	-----	D04-382	-----
138	Sheave Shaft Cotter (2).....	-----	D04-383	-----	-----	D04-383	-----
139	Sheave Shaft Oiler.....	-----	D02-384	-----	-----	D02-384	-----

* Not illustrated.



TPB188

**Sheave Block and Auxiliary Sheave Parts
for Sizes DZ and D6Z Long Lift Hoists.**



TPC28-1

Remote Control Parts

(Part List on Page 15)

ILLUSTRATION NUMBER (Do not use for ordering)	PART NAME FOR ORDERING Parts Indented After An Item Are Included With That Item	PART NUMBER FOR ORDERING					
		SIZES D, DN, DQ	SIZES DR, DW, DX	SIZE DZ	SIZE D6	SIZE D6R	SIZE D6Z
	Auxiliary Sheave Assembly.....	-----	-----	D04-A638	-----	-----	D04-A638
140	Auxiliary Sheave Housing.....	-----	-----	D04-639	-----	-----	D04-639
141	Auxiliary Sheave Housing Short Screw (4).....	-----	-----	D10-354	-----	-----	D10-354
142	1/2" Lock Washer (4).....	-----	-----	D10-322	-----	-----	D10-322
143	Auxiliary Sheave.....	-----	-----	D04-638	-----	-----	D04-638
144	Auxiliary Sheave Shaft.....	-----	-----	D10-641	-----	-----	D10-641
145	Auxiliary Sheave Shaft Cotter (2).....	-----	-----	D04-383	-----	-----	D04-383
146	Auxiliary Sheave Housing Long Screw (4).....	-----	-----	215-148	-----	-----	215-148
147	1/2" Lock Washer (4).....	-----	-----	D10-322	-----	-----	D10-322
148	Rope Guide.....	-----	-----	D04-645	-----	-----	D04-645
*	Rope Guide Bolt.....	-----	-----	D01-339	-----	-----	D01-339
*	Rope Guide Bolt Nut.....	-----	-----	HU-776	-----	-----	HU-776
	Top Hook Yoke Assembly (for Sizes D, DN, DR, DW, DZ, D6 D6R and D6Z)						
	With Open Hook.....	D04-A590A	D04-A590A	D04-A590A	D06-A590A	D06-A590A	D06-A590A
	With Safety Hook.....	D04-AS590A	D04-AS590A	D04-AS590A	D06-AS590A	D06-AS590A	D06-AS590A
149	Top Hook Yoke						
	With Open Hook.....	D04-590A	D04-590A	D04-590A	D06-590A	D06-590A	D06-590A
	With Safety Hook.....	D04-S590A	D04-S590A	D04-S590A	D06-S590A	D06-S590A	D06-S590A
† 150	Top Hook and Nut						
	Open Type.....	D04-304B	D04-304B	D04-304B	D06-304B	D06-304B	D06-304B
	Safety Type.....	D04-S377	D04-S377	D04-S377	D06-S377	D06-S377	D06-S377
151	Safety Latch Kit (individual parts not sold separately) (for for Crosby-Laughlin Hoists.....	D04-S4055	D04-S4055	D04-S4055	D06-S4055	D06-S4055	D06-S4055
	for Williams-Vulcan Hooks.....	D04-S123	D04-S123	D04-S123	D06-S123	D06-S123	D06-S123
† 152	Top Hook Spacer.....	D04-591A	D04-591A	D04-591A	D06-591A	D06-591A	D06-591A
† 153	Top Hook Bearing						
	Timken No. T-113 or its equivalent.....	D04-379A	D04-379A	D04-379A	-----	-----	-----
	Timken No. T-126 or its equivalent.....	-----	-----	-----	D06-379A	D06-379A	D06-379A
154	Yoke Bolt (2).....	D02-339	D02-399	D02-339	D02-339	D02-339	D02-339
155	Yoke Bolt Nut (1 for each Bolt).....	D02-440B	D02-440B	D02-440B	D02-440B	D02-440B	D02-440B
	Sheave Block Assembly						
	With Open Hook.....	D04-A378A	-----	-----	D06-A378A	-----	-----
	With Safety Hook.....	D04-AS378A	-----	-----	D06-AS378A	-----	-----
156	Sheave Block						
	With Open Hook.....	D04-378A	-----	-----	D06-378A	-----	-----
	With Safety Hook.....	D04-S378A	-----	-----	D06-S378A	-----	-----
● 157	Bottom Hook and Nut						
	Open Type.....	D04-304B	-----	-----	D06-304B	-----	-----
	Safety Type.....	D04-S377	-----	-----	D06-S377	-----	-----
158	Safety Latch Kit (individual parts not sold separately) (for Safety Hook)						
	for Crosby-Laughlin Hooks.....	D04-S4055	-----	-----	D06-S4055	-----	-----
	for Williams-Vulcan Hooks.....	D04-S123	-----	-----	D06-S123	-----	-----
● 159	Bottom Hook Bearing						
	Timken No. T-113 or its equivalent.....	D04-379A	-----	-----	-----	-----	-----
	Timken No. T-126 or its equivalent.....	-----	-----	-----	D06-379A	-----	-----
160	Sheave.....	D04-380	-----	-----	D06-380	-----	-----
161	Sheave Shaft.....	D04-382	-----	-----	D04-382	-----	-----
162	Sheave Shaft Cotter (2).....	D04-383	-----	-----	D04-383	-----	-----
163	Sheave Shaft Oiler.....	D02-384	-----	-----	D02-384	-----	-----

ILLUSTRATION NUMBER (Do not use for ordering)	PART NAME FOR ORDERING Parts Indented After An Item Are Included With That Item	PART NUMBER FOR ORDERING					
		SIZES D, DN DQ	SIZES DR, DW, DX	SIZE DZ	SIZE D6	SIZE D6R	SIZE D6Z
	Sheave Block Assembly						
	With Open Hook.....	-----	-----	D04-A630	-----	-----	D06Z-A630
	With Safety Hook.....	-----	-----	D04-AS630	-----	-----	D06Z-AS630
164	Sheave Hook Support						
	With Open Hook.....	-----	-----	D04-632	-----	-----	D06-632
	With Safety Hook.....	-----	-----	D04-S632	-----	-----	D06-S632
▲165	Bottom Hook and Nut						
	Open Type.....	-----	-----	D04-304B	-----	-----	D06-304B
	Safety Type.....	-----	-----	D04-S377	-----	-----	D06-S377
*	Safety Hook Latch Kit (individual parts not sold separately) (for Safety Hook)						
	for Crosby-Laughlin Hooks.....	-----	-----	D04-S4055	-----	-----	D06-S4055
	for Williams-Vulcan Hooks.....	-----	-----	D04-S123	-----	-----	D06-S123
▲166	Bottom Hook Bearing						
	Timken No. T-113 or its equivalent.....	-----	-----	D04-379A	-----	-----	-----
	Timken No. T-126 or its equivalent.....	-----	-----		-----	-----	D06-379A
167	Hook Support Nut (2).....	-----	-----	D04-305	-----	-----	D04-305
168	Hook Support Cotter (2).....	-----	-----	D02-438	-----	-----	D02-438
169	Side Plate Spacer (2).....	-----	-----	D04-635	-----	-----	D04-635
170	Side Plate Spacer Nut (2 for each Spacer).....	-----	-----	215-182	-----	-----	215-182
171	1/2" Lock Washer (2 for each Spacer).....	-----	-----	D10-322	-----	-----	D10-322
172	Sheave Block Side Plate (2) (Sold only in sets).....	-----	-----	D04-630	-----	-----	D04-630
173	Sheave (2).....	-----	-----	D04-649	-----	-----	D04-649
*	Sheave Oiler (1 for each Sheave).....	-----	-----	H54U-432	-----	-----	H54U-432
174	Sheave Spacer.....	-----	-----	D04-631	-----	-----	D04-631
175	Sheave Shaft.....	-----	-----	D04Z-382	-----	-----	D04Z-382
*	Sheave Shaft Oiler.....	-----	-----	D04Z-384	-----	-----	D04Z-384
176	Sheave Shaft Cotter (2).....	-----	-----	D04-383	-----	-----	D04-383
	Hook Block Assembly						
	With Open Hook.....	-----	D04-A463A	-----	-----	D04-A463A	-----
	With Safety Hook.....	-----	D04-AS463A	-----	-----	D04-AS463A	-----
★177	Hook Block.....	-----	D04-463A	-----	-----	D04-463A	-----
★178	Bottom Hook and Nut						
	Open Type.....	-----	D04-304B	-----	-----	D04-304B	-----
	Safety Type.....	-----	D04-S377	-----	-----	D04-S377	-----
*	Safety Hook Latch Kit (individual parts not sold separately) (for Safety Hook)						
	for Crosby-Laughlin Hooks.....	-----	D04-S4055	-----	-----	D04-S4055	-----
	for Williams-Vulcan Hooks.....	-----	D06-S123	-----	-----	D06-S123	-----
179	Hook Cotter.....	-----	D02-438	-----	-----	D02-438	-----
★180	Bottom Hook Bearing (Timken No. T-113 or its equivalent).....	-----	D04-379A	-----	-----	D04-379A	-----
181	Rope Clamp.....	-----	D04-464	-----	-----	D04-464	-----
182	Wire Rope Wedge.....	-----	D02-373	-----	-----	D02-373	-----
183	Safety Stop Block.....	-----	D02-469	-----	-----	D02-469	-----

* Not illustrated.
† Unless the present Top Hook shank is 1 1/8" - 12 thread for Series D Hoists; 1 1/4" - 12 thread for Series D6 Hoists, order a Top Hook Yoke (149).
● Unless the present Bottom Hook shank is 1 1/8" - 12 thread for Series D Hoists; 1 1/4" - 12 thread for Series D6 Hoists, order a Sheave Block (156).
▲ Unless the present Bottom Hook shank is 1 1/8" - 12 thread for Size DZ; 1 1/4" - 12 thread for Size D6Z, order a Sheave Hook Support (164).
★ Unless the shank on the present Bottom Hook is threaded 1 1/8" - 12 thread, order a Hook Block Assembly.

TABLE A

**TROLLEY BRACKET BOLTS, HINGE PINS and TROLLEY BRACKET SPACERS,
REQUIRED FOR MOUNTING TROLLEYS ON VARIOUS TRACKS**

(Refer to illustration and part list on pages 14, 16, 17 and 18)

I-BEAMS and RICHARDS-WILCOX "TRU-TRED" TRACKS

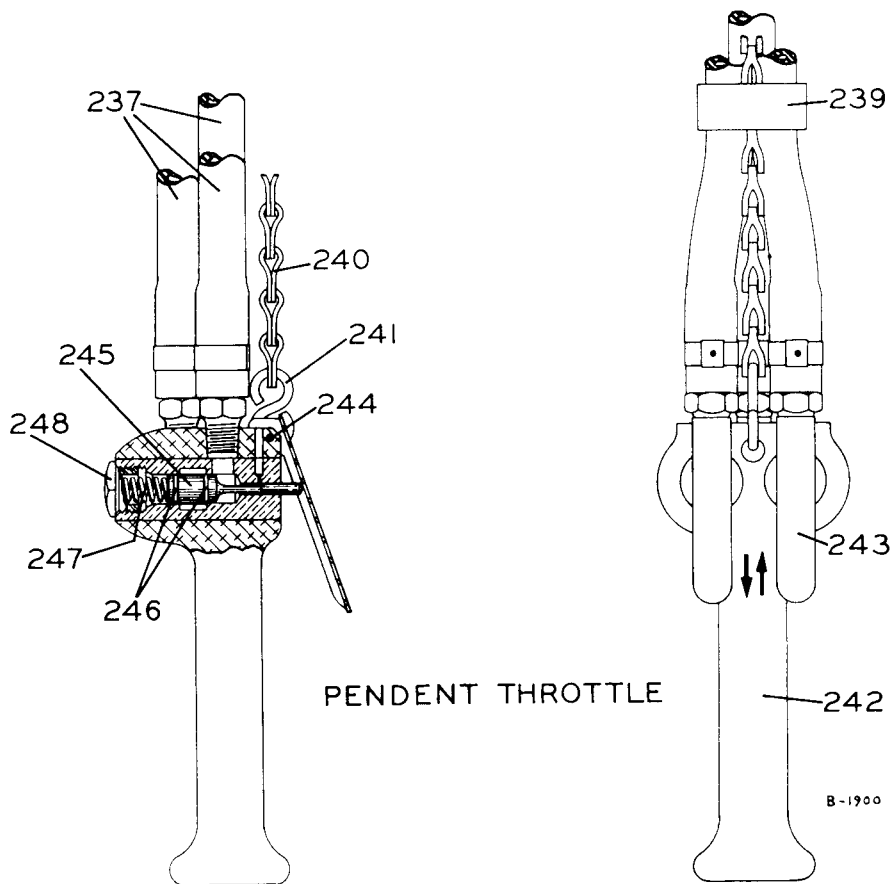
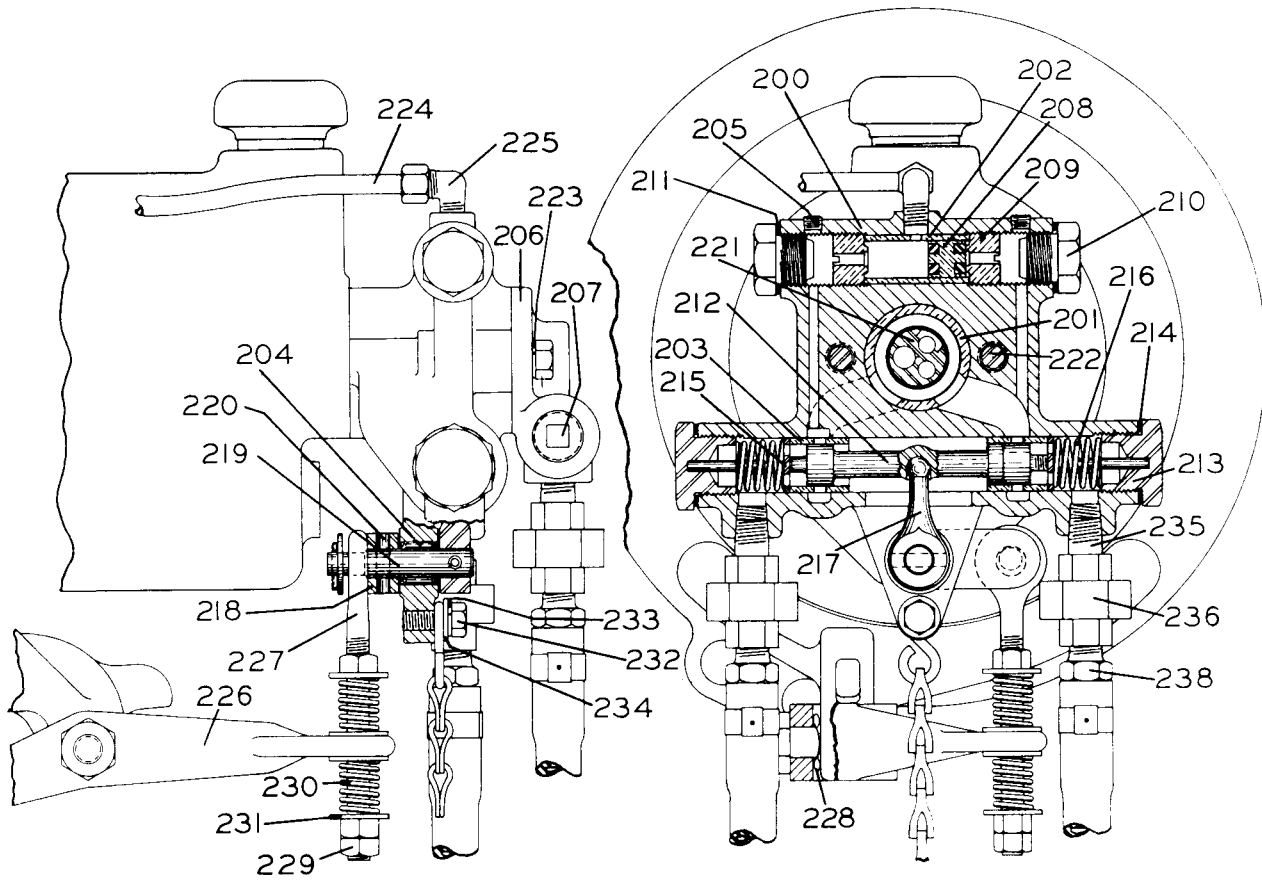
Beam Size, inches	Flange Width, inches	Length of Trolley Bracket Bolt, inches		Length of Bracket Hinge Pin, inches	Trolley Bracket Spacers	
		For Hoists under Serial 30,000	For Hoists over Serial 30,000		Length, inches	Quantity Required
6	3.33	9	10	10½	—	—
7	3.66	9	10	10½	1/6	4
8	4.00	9	10	10½	—	—
9	4.33	9	10	10½	1/6	4
10	4.66	10	11	10½	1/6	8
12	5.00	10	11	11½	1/2	4
15	5.50	11	11	11½	¾	4
18	6.00	11	12	12	1	4

FLAT-TREAD MONORAILS

Flange Width of Monorail, inches	Length of Trolley Bracket Bolt, inches	Length of Bracket Hinge Pin, inches	Trolley Bracket Spacers	
			Length, inches	Quantity Required
3.25 to 3.33 4 1/16	10	10½	—	—
	11	11½	¾	4

MAINTENANCE TOOLS

Tool Number For Ordering	Tool Name For Ordering	Operation
P25-228	Grease Gun.....	Lubrication.
D02-426	Rope Set Screw Wrench.....	Installing or removing the Rope Set Screw (101) in the Rope Drum (100).
D02-932	Valve Chest Jack Bolt (2 required).....	Removing Valve Chest (29) from the Motor Case (1).
D04-933	Piston Ring Compressor (for Series D Hoists).....	Compressing Oil Regulating Piston Ring (27) when installing Cylinder (21).
D06-933	Piston Ring Compressor (for Series D6 Hoists).....	Compressing Oil Regulating Piston Ring (27) when installing Cylinder (21).
23468	Throttle Valve Seat Reamer.....	Refacing seat in Valve Chest (29) for Poppet Valve (45).
23470	Throttle Valve Stem Reamer.....	Reaming throttle valve stem hole in Reverse Valve Bushing (35) after installing a new Bushing.
37860	Shuttle Valve Bushing Reamer.....	Reaming Shuttle Valve Bushings (203) after installation in the Shuttle Valve Chest (200).
37871	Shuttle Valve Inserting Tool.....	Inserting new Shuttle Valve Bushings (203) in the Shuttle Valve Chest (200).
38180	Brake Valve Bushing Inserting Tool.....	Installing the Brake Valve Bushing (202) in the Shuttle Valve Chest (200).



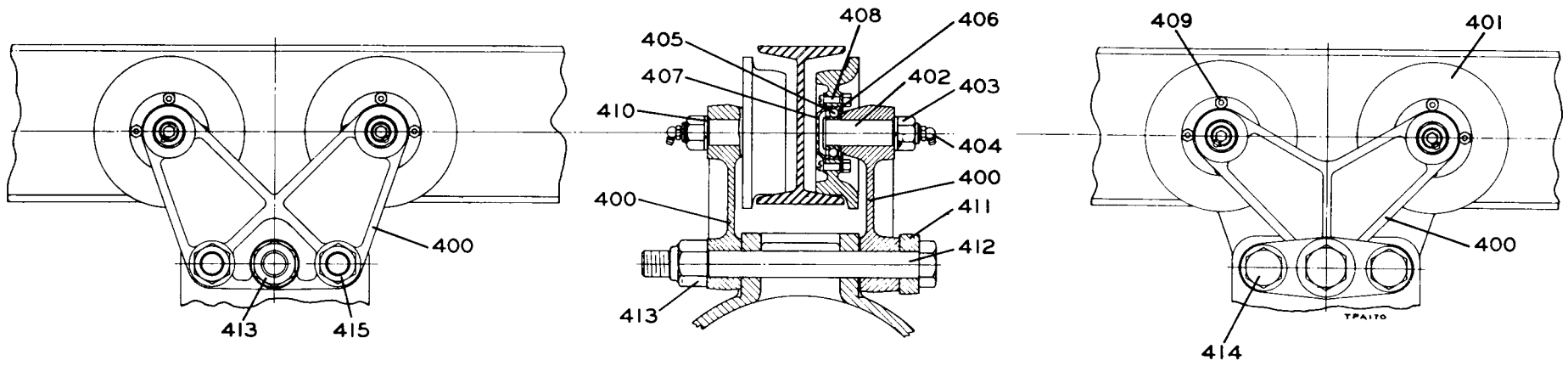
B-1900

PENDENT THROTTLE PARTS

ILLUSTRATION NUMBER (Do not use for ordering)	PART NAME FOR ORDERING Parts Indented After An Item Are Included With That Item	PART NUMBER FOR ORDERING
	Shuttle Valve Chest Assembly.....	D02-A245
200	Shuttle Valve Chest.....	D02-245
201	Rotary Valve Bushing.....	D02-525A
*	Valve Oiler.....	JA4-75
*	Bushing Key.....	ROAJ-191
202	Brake Valve Bushing.....	D01-63
203	Shuttle Valve Bushing (2).....	D02-247
204	Stop Arm Shaft Bearing (Torrington No. B-810 or its equivalent).....	D01-243
205	1/16" Pipe Plug (2).....	502-95
206	Shuttle Valve Chest Cover.....	D02-241
207	Air Inlet Plug.....	22SR-165
208	Brake Valve.....	D01-62A
209	Brake Valve Seat (2).....	D01-65
210	Brake Valve Cap (2).....	D01-943
211	Brake Valve Cap Gasket (2).....	D01-946
212	Shuttle Valve.....	D02-246
213	Shuttle Valve Cap (2).....	D02-238
214	Shuttle Valve Cap Gasket (2).....	D02-239
215	Shuttle Valve Washer (2).....	D02-248
216	Shuttle Valve Spring (2).....	D02-250
217	Shuttle Valve Finger.....	D01-251
218	Stop Arm.....	D01-254
219	Stop Arm Shaft.....	D01-255
220	Stop Arm Shaft Pin (2).....	D01-256
221	Rotary Valve.....	D02-526
*	Valve Drive Pin.....	D02-527
222	Shuttle Valve Chest Screw (3).....	D02-548
223	Valve Chest Screw Lock Washer (3).....	D02-321
224	Brake Pipe.....	D04-201
225	Brake Pipe Elbow (2).....	D02-400
226	Safety Stop Lever For Sizes D and D6.....	D02-222
	For Sizes DN, DQ, DZ and D6Z.....	D02N-222
	For Sizes DR, DW, DX and D6R.....	D02W-222
227	Stop Lever Link.....	D02-224
228	Friction Spring (2) (used only on Sizes D and D6).....	D01-268
229	Stop Lever Link Nut (3 used on Sizes D and D6; 2 on others).....	D02-418
230	Stop Lever Link Spring (2 used on Sizes D and D6; 1 on others).....	D02-106
231	Stop Lever Link Washer (4 used on Sizes D and D6; 2 on others).....	D02-419
232	Pendent Throttle Chain Screw.....	R3-7A
233	Chain Screw Lock Washer.....	T11-58
234	5/16" Plain Washer.....	B8-259
235	Pendent Throttle Inlet Nipple (3).....	D02-908
236	Control Hose Union (3).....	D02-129
237	Control Hose (3) (standard length 5 ft. Any length up to and including 15 ft. will be furnished when specified).....	D02-930
238	Control Hose Nipple (2 for each Hose).....	D02-14
239	Control Hose Binder (3).....	D02-927
240	Pendent Throttle Chain (specify length 1" shorter than (237) Control Hose).....	D01-240
241	Pendent Throttle Chain S-Hook (2).....	D01-221
242	Pendent Throttle Handle.....	D02-269
243	Pendent Throttle Lever (2).....	R00H-273A
244	Throttle Lever Pin.....	DLC-120
245	Pendent Throttle Valve (2).....	D02-264
246	Pendent Throttle Valve Seal Ring (2 for each Valve).....	ROAR-210
247	Pendent Throttle Valve Spring (2).....	D01-51
248	Pendent Throttle Valve Cap (2).....	D02-180
†*	Control Hose Exhaust Valve (2).....	MR-939

* Not illustrated.

† Control Hose Exhaust Valve (2) required when control exceeds 15 feet.



Plain Trolley
(Repair Part List on page 16)

(See illustration on page 8)

REMOTE CONTROL PARTS

ILLUSTRATION NUMBER (Do not use for ordering)	PART NAME FOR ORDERING Parts Indented After An Item Are Included With That Item	PART NUMBER FOR ORDERING
	Remote Control Valve Chest Assembly.....	D02-A686
601	Remote Control Valve Chest.....	C04-545
602	Rotary Valve Bushing.....	D02-525A
603	Valve Oiler.....	JA4-75
604	Bushing Key.....	D02-538
605	Rotary Valve.....	D02-526
606	Valve Drive Pin.....	D02-527
607	Remote Control Valve Chest Cover.....	C04-546
608	Valve Chest Short Screw (2).....	D02-506
*	Valve Chest Long Screw (2).....	D02-548
609	3/8" Lock Washer (4).....	D02-321
	Remote Control Block Assembly.....	D02-A685
610	Remote Control Block.....	D02-685
611	Control Arm Retainer.....	D02-687
612	Control Arm Retainer Screw (2).....	G7-7A
613	Control Arm Retainer Screw Lock Washer (2).....	T11-58
*	Reducing Bushing (1" to 3/4") (2).....	C10-284
614	Control Block Valve Chest.....	D02-876A
615	Bushing Key (2).....	D02-538
616	Throttle Spring Stop Pin.....	D02-553
617	Control Block Reverse Valve Bushing.....	D02-945
618	Control Block Valve Chest Cover.....	D02-546A
619	Control Block Valve Chest Cover Screw (2).....	D02-506
620	Cover Screw Lock Washer.....	D02-321
621	Control Block Throttle Arm.....	D02-555
622	Throttle Spring Stop Pin.....	D02-553
623	Control Block Throttle Lever.....	EU-556
624	Control Block Throttle Lever Spring.....	D02-412B
625	Control Block Poppet Throttle Valve.....	D02-940
626	Control Block Throttle Valve Ball.....	D10-280
627	Control Block Throttle Valve Spring.....	B01-11
628	Control Block Throttle Valve Cap.....	D02-943
629	Control Block Throttle Valve Cap Gasket.....	G601-411
630	Control Block Valve Chest Cover Gasket.....	D02-928
*	Throttle Lever Bolt (2).....	D02-411A
*	Throttle Lever Bolt Nut (2).....	D02-418A
*	Grease Fitting.....	R1-188
631	Exhaust Ell.....	DU-587
632	Control Block Reverse Valve.....	D02-944
	Safety Stop Valve Assembly.....	D02-A988
633	Safety Stop Valve.....	D02-988
634	Valve Return Spring.....	D04-249
635	Hexagon Nut (5/16"-18 thd.) (4).....	D02-428
636	Stop Lever Link.....	D02-924
637	Stop Link Spring.....	207-357
638	Stop Lever Link Bolt.....	20-26
639	5/16" Plain Washer (3).....	B8-259
640	Pipe Nipple (3/4" x 3").....	D02-987

*Not illustrated.

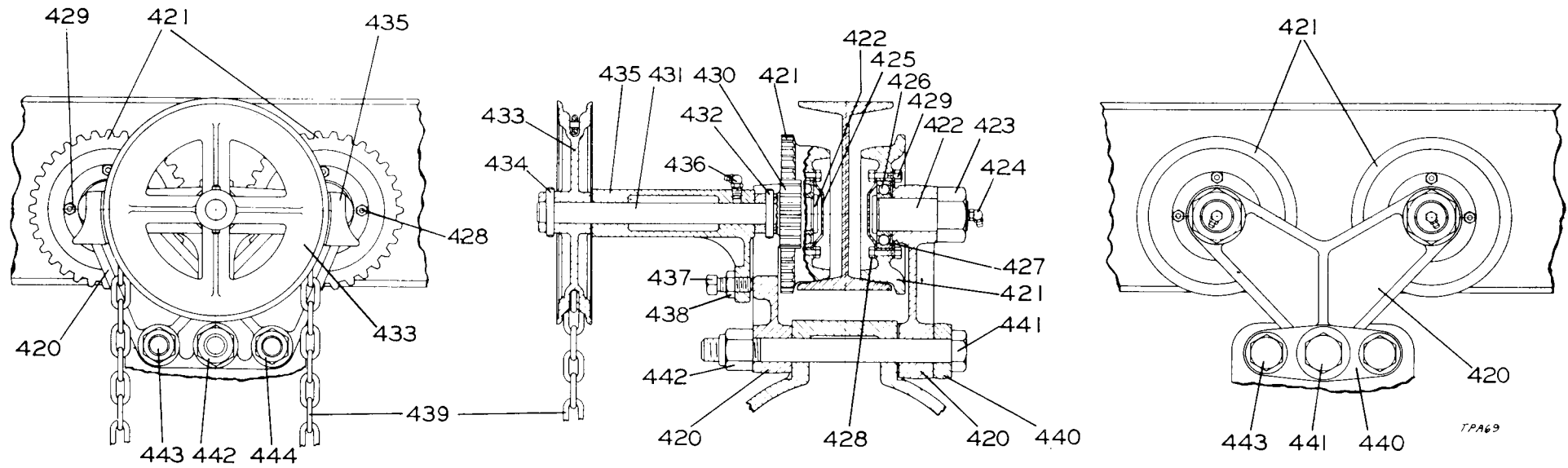
PLAIN TROLLEY
 (Illustrated on Page 14)
FOR SIZES D, DQ, DR, DX, DZ, D6, D6R, D6Z HOISTS

ILLUSTRATION NUMBER (Do not use for ordering)	PART NAME FOR ORDERING Parts Indented After An Item Are Included With That Item	PART NUMBER FOR ORDERING					
		For Hoists over Serial 30,000			For Hoists Under Serial 30,000		
		For 6" or 7" I-Beam	For 8" to 18" I-Beam	For Flat Tread Monorails	For 6" to 7" I-Beam	For 8" to 18" I-Beam	For Flat Tread Monorails
★	Trolley Assembly.....	D04-A430-6	D04-A430	D04-AT430	D04-C430-6	D04-C430	D04-CT430
	Assembled Trolley Bracket						
	Hinge Type.....	D04-B427-6	D04-B427	D04-BT427	-----	-----	-----
	Rigid Type (1 for Hoists over serial 30,000; 2 for others).....	D04-B430-6	D04-B430	D04-BT430	D04-B430-6	D04-B430	D04-BT430
400	Trolley Bracket						
	Hinge Type.....	D04-427	D04-427	D04-427	-----	-----	-----
	Rigid Type (1 for Hoists over serial 30,000; 2 for others).....	D04-430	D04-430	D04-430	D04-430	D04-430	D04-430
401	Trolley Wheel (2 for each assembled Trolley Bracket).....	D04-231	D04-431	D04-T431	D04-231	D04-431	D04-T431
402	Trolley Wheel Shaft (1 for each wheel).....	D04-435	D04-435	D04-435	D04-435	D04-435	D04-435
403	Trolley Wheel Shaft Nut (1 for each shaft).....	D10-305	D10-305	D10-305	D10-305	D10-305	D10-305
404	Angle Grease Fitting (1 for each shaft).....	23-189	23-189	23-189	23-189	23-189	23-189
405	Trolley Wheel Bearing (1 for each wheel) (AFBMA No. 35BC02JP).....	D04-956	D04-956	D0 4-956	D04-956	D04-956	D04-956
406	Bearing Plate (1 for each wheel).....	D04-955	D04-955	D04-955	D04-955	D04-955	D04-955
407	Bearing Cap (1 for each wheel).....	D04-954	D04-954	D04-954	D04-954	D04-954	D04-954
408	1/4" Cap Screw (4 for each wheel).....	501-638	501-638	501-638	501-638	501-638	501-638
409	1/4" Elastic Stop Nut (1 for each Cap Screw).....	501-639	501-639	501-639	501-639	501-639	501-639
*	Trolley Wheel Bearing Spacer (1 for each wheel).....	D04-963	-----	-----	D04-963	-----	-----
411	Trolley Bracket Yoke.....	D04-952	D04-952	D04-952	-----	-----	-----
412	Bracket Hinge Pin (Refer to Table A on page 11)						
	10 1/2" Long.....	D04-953-10 1/2	D04-953-10 1/2	D04-953-10 1/2	-----	-----	-----
	11 1/2" Long.....	-----	D04-953-11 1/2	D04-953-11 1/2	-----	-----	-----
	12" Long.....	-----	D04-953-12	-----	-----	-----	-----
413	1" Hexagon Nut (1"-8 thread Elastic Stop Nut).....	D04-959A	D04-959A	D04-959A	-----	-----	-----
414	Trolley Bracket Bolt (2) (Refer to Table A on page 11).....	-	-	-	-	-	-
	10" Long.....	D02-439A-10	D02-439A-10	D02-439A-10	D02-439A-10	D02-439A-10	D02-439A-10
	11" Long.....	-----	D02-439A-11	-----	-----	D02-439A-11	-----
	12" Long.....	-----	D02-439A-12	-----	-----	D02-439A-12	-----
415	Trolley Bracket Bolt Nut (2) (Elastic Stop Nut).....	D02-440B	D02-440B	D02-440B	D02-440B	D02-440 B	D02-440B
*	Trolley Bracket Spacer (Refer to Table A on page 11)						
	1/6" Long.....	D02-442A-1/6	D02-442A-1/6	-----	D02-442A-1/6	D02-442A-1/6	-----
	3/8" Long.....	-----	-----	D02-442A-3/8	-----	-----	D02-442A-3/8
	1/2" Long.....	-----	D02-442A-1/2	-----	-----	D02-442A-1/2	-----
	3/4" Long.....	-----	D02-442A-3/4	-----	-----	D02-442A-3/4	-----
	1" Long.....	-----	D02-442A-1	-----	-----	D02-442A-1	-----

* Not illustrated.

★ Always specify the flange width of the I-Beam or Monorail on which the Trolley is to operate.

**HAND CHAIN DRIVEN TROLLEY
FOR SIZES D, DQ, DR, DX, DZ, D6, D6R, D6Z HOISTS**



17

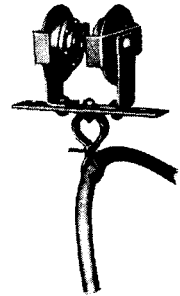
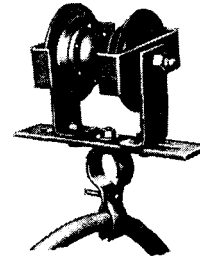
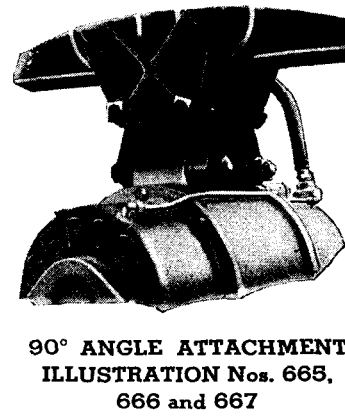
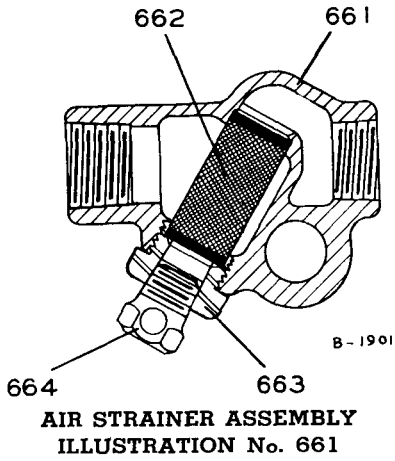
ILLUSTRATION NUMBER (Do not use for ordering)	PART NAME FOR ORDERING Parts Indented After An Item Are Included With That Item	PART NUMBER FOR ORDERING			
		For Hoists over Serial 30,000		For Hoists under Serial 30,000	
		For 8" to 18" I-Beam	For Flat Tread Monorails	For I-Beam	For Flat Tread Monorails
★	Hand Chain Trolley Assembly				
	For Sizes D and D6.....	D04-A471	D04-AT471	D04-C471	D04-CT471
	For Sizes DX, DZ and D6Z.....	D04X-A471	D04X-AT471	D04X-C471	D04X-CT471
	For Size DQ.....	D04Q-A471	D04Q-AT471	D04Q-C471	D04Q-CT471
	For Size DR.....	D04R-A471	D04R-AT471	D04R-C471	D04R-CT471
	For Size D6R.....	D06R-A471	D06R-AT471	D06R-C471	D06R-CT471
	Assembled Trolley Bracket				
	Geared Side.....	D04-G430	D04-GT430	D04-G430	D04-GT430
	Plain Side.....	D04-B427	D04-BT427	D04-B430	D04-BT430
420	Trolley Bracket				
	Geared Side.....	D04-430	D04-430	D04-430	D04-430
	Plain Side.....	D04-427	D04-427	D04-430	D04-430
421	Trolley Wheel				
	Geared Side (2).....	D04-472	D04-T472	D04-472	D04-T472
	Plain Side (2).....	D04-431	D04-T431	D04-431	D04-T431

★ Always specify the flange width of the I-Beam or Monorail on which the Trolley is to operate.

ILLUSTRATION NUMBER (Do not use for ordering)	PART NAME FOR ORDERING Parts Indented After An Item Are Included With That Item	PART NUMBER FOR ORDERING			
		For Hoists over Serial 30,000		For Hoists under Serial 30,000	
		For 8" to 18" I-Beam	For Flat Tread Monorails	For I-Beam	For Flat Tread Monorails
422	Trolley Wheel Shaft				
	Geared Side (2).....	D04-474	D04-474	D04-474	D04-474
	Plain Side (2).....	D04-435	D04-435	D04-435	D04-435
423	Trolley Wheel Shaft Nut				
	Geared Side (2).....	DU-562	DU-562	DU-562	DU-562
	Plain Side (2).....	D10-305	D10-305	D10-305	D10-305
424	Angle Grease Fitting (1 for each shaft).....	23-189	23-189	23-189	23-189
425	Bearing Cap (1 for each wheel).....	D04-954	D04-954	D04-954	D04-954
426	Trolley Wheel Bearing (1 for each wheel) (AFBMA No. 35BC02JP)	D04-956	D04-956	D04-956	D04-956
427	Bearing Plate (1 for each wheel).....	D04-955	D04-955	D04-955	D04-955
428	1/4" Cap Screw (4 for each wheel).....	501-638	501-638	501-638	501-638
429	1/4" Elastic Stop Nut (1 for each Cap Screw).....	501-639	501-639	501-639	501-639
*	3/4" Lock Washers (2).....	D01-692	D01-692	D01-692	D01-692
430	Drive Pinion.....	D02-473	D04-T473	D02-473	D04-T473
431	Chain Sprocket Shaft.....	D02-475	D02-475	D02-475	D02-475
432	Taper Pin.....	D02-520	D02-520	D02-520	D02-520
433	Chain Sprocket.....	D02-470	D02-470	D02-470	D02-470
434	Taper Pin.....	D02-520	D02-520	D02-520	D02-520
435	Chain Sprocket Bracket.....	D04-471	D04-471	D04-471	D04-471
436	Angle Grease Fitting.....	23-189	23-189	23-189	23-189
437	Bracket Set Screw.....	D02-480 A	D02-480 A	D02-480 A	D02-480 A
438	Bracket Set Screw Nut.....	G7-18	G7-18	G7-18	G7-18
439	Hand Chain				
	For Sizes D and D6.....	D02-476	D02-476	D02-476	D02-476
	For Sizes DX, DZ and D6Z.....	D02X-476	D02X-476	D02X-476	D02X-476
	For Size DQ.....	D02Q-476	D02Q-476	D02Q-476	D02Q-476
	For Size DR.....	D01Q-476	D01Q-476	D01Q-476	D01Q-476
	For Size D6R.....	D10Y-476	D10Y-476	D10Y-476	D10Y-476
440	Trolley Bracket Yoke.....	D04-952	D04-952	D04-952	D04-952
441	Bracket Hinge Pin (Refer to Table A on page 11)				
	10 1/2" Long.....	D04-953-10 1/2	D04-953-10 1/2	-----	-----
	11 1/2" Long.....	D04-953-11 1/2	D04-953-11 1/2	-----	-----
	12" Long.....	D04-953-12	-----	-----	-----
442	1" Hexagon Nut	D04-959A	D04-959A	-----	-----
443	Trolley Bracket Bolt (2) (Refer to Table A on page 11)				
	10" Long	D02-439A-10	D02-439A-10	D02-439A-10	D02-439A-10
	11" Long	D02-439A-11	D02-439A-11	D02-439A-11	D02-439A-11
	12" Long	D02-439A-12	-----	D02-439A-12	-----
444	Trolley Bracket Bolt Nut (2).....	D02-440B	D02-440B	D02-440B	D02-440B
*	Trolley Bracket Spacer (Refer to Table A on page 11)				
	1/6" Long.....	D02-442A-1/6	-----	D02-442A-1/6	-----
	3/8" Long.....	-----	D02-442A-3/8	-----	D02-442A-3/8
	1/2" Long.....	D02-442A-1/2	-----	D02-442A-1/2	-----
	3/4" Long.....	D02-442A-3/4	-----	D02-442A-3/4	-----
	1" Long.....	D02-442A-1	-----	D02-442A-1	-----

* Not illustrated.

SPECIAL EQUIPMENT and ACCESSORIES



SPECIAL EQUIPMENT AND ACCESSORIES

ILLUSTRATION NUMBER (Do not use for ordering)	PART NAME FOR ORDERING	PART NUMBER FOR ORDERING
	Parts Indented After An Item Are Included With That Item	
661	Air Strainer Assembly.....	EU-A267
662	Air Strainer Screen.....	P25-61A
663	Air Strainer Cap.....	P25-268
664	Air Strainer Plug.....	P25-536
*	Air Strainer Nipple (required for attaching Air Strainer Assembly to Hoist)..	D02-456
665	90° Angle Attachment.....	D02-444B
666	Angle Attachment Bolt (2).....	D01C-694-8 1/2
667	Angle Attachment Bolt Nut (2).....	D02-440B
668	Exhaust Muffler	
	For Hoists with Pull Chain Throttle.....	D02-674A
	For Hoists with Pendent Throttle.....	D02-P674A
*	Muffler Nipple	
	For Hoists with Pull Chain Throttle	P35-286
	For Hoists with Pendent Throttle	C04-286
*	Muffler Chain.....	D02-673
*	S-Hook.....	D02-421
*	Reducing Bushing (for Hoists with Pendent Throttle).....	C10-284
669	Hose Trolley.....	D02-730 A
670	Hose Trolley Track (10 ft. length).....	D02-731A
671	Hose Trolley Track Bracket.....	D02-732A
672	I-Beam Hose Trolley	
	For operation on I-Beams with flanges 2.33" up to and including 5.00" wide.....	D02-8888
	For operation on I-Beams with flanges 5.00" up to and including 8.75" wide.....	D10-8888

*Not illustrated.

Ingersoll-Rand®

Tool & Hoist Division
28 Kennedy Blvd.
East Brunswick, N. J. 08816

● **Atlanta, Ga.**
111 Ingersoll-Rand Drive
Chamblee, Georgia 30341

★ **Beaumont, Texas** 77648
5336 Twin City Highway
Port Arthur, Texas

★ **Birmingham, Ala.** 35233
1516 Second Ave., South

★ **Buffalo, N. Y.** 14225
195 Sugg Rd.

● **Charlotte, N. C.** 28208
4840 Wilmont Rd.

● **Chicago, Ill.**
888 Industrial Drive
Elmhurst, Illinois 60126

● **Cincinnati, Ohio**
619 Redna Terrace
Woodlawn, Ohio 45215

● **Cleveland, Ohio** 44125
9257 Midwest Ave.

● **Dallas, Texas** 75247
8901 Directors Row

● **Denver, Colo.** 80216
4045 Elati St.

● **Detroit, Mich.**
21222 Telegraph Road
Southfield, Mich. 48075

● **Hartford, Conn.** 06114
151 Meadow St.

● **Houston, Texas** 77027
6800 Sands Point, P.O. 1455

★ **Indianapolis, Ind.** 46220
2120 East 54th St

● **Kansas City, Mo.** 64114
8900 Ward Parkway

● **Los Angeles, Calif.** 90022
5533 East Olympic Blvd

● **Memphis, Tenn.** 38116
1231 E. Raines Rd.
P.O. Box 16248
Whitehaven Station

● **Milwaukee, Wis.** 53225
2311 W. Silver Springs Dr.

● **Minneapolis, Minn.** 55404
Corner Franklin and Cedar

● **Moline, Ill.**
1808 11th St.
Rock Island, Ill. 61201

● **Newark, N. J.**
28 Kennedy Blvd.
East Brunswick, N. J. 08816

● **New Orleans, La.** 70125
960 South Genois Street

● **Philadelphia, Pa.**
651 Park Ave.
King of Prussia, Pa. 19406

● **Pittsburgh, Pa.** 15220
6 Parkway Ctr.

★ **Richmond, Va.** 23230
3431 West Leigh St.

● **San Francisco, Calif.**
14299 Leckro Blvd.
San Leandro, Calif. 94577

★ **Schenectady, N. Y.** 12303
723 Crane St.

● **Seattle, Wash.** 98188
345 Andover Park East

● **St. Louis, Mo.** 63132
1515 Page Industrial Blvd.

★ **Tampa, Fla.** 33609
3307 South Westshore Blvd.

★ **Tulsa, Oklahoma** 74120
407 South Peoria Ave.

● **Washington, D. C.** 20006
1627 K. St., N. W.

● Branch and Factory Repair Servicenter.

★ Factory Repair Servicenter only

CANADA

● **Calgary, Alberta,** T2H 0B4
210 61st. Ave., S. W.

● **Montreal 111, Quebec**
620 Cathcart St.
P.O. Box 1148

Canadian Ingersoll-Rand Co., Limited
Montreal 111, Quebec
620 Cathcart St.
P.O. Box 610

● **Sudbury, Ontario**
P. O. Box 2220

● **Vancouver 4, British Columbia**
1695 Main St.

● **Edmonton, Alberta,** T5L 2Y3
14530 123rd. Ave.

● **Sherbrooke, Quebec**
375 Courcellette St.

● Branch Repair Depots

● **Toronto 12, Ontario**
255 Lesmill Road,
Don Mills

● **Winnipeg, Manitoba,** R3H 0M6
1234 Border St., St. James

MEXICO

● **Mexico 10, D. F., Mexico**
Ingersoll-Rand S. A. de C. V.
Apartado 41-666

● **Monterrey**
Ingersoll-Rand S. A. de C. V.
Apartado 4457

SOUTH AMERICA

● **Argentina, Buenos Aires**
Ingersoll-Rand Argentina
S. A. I. y C.
Casilla Correo 2412, Correo Central

● **Bolivia, La Paz**
International Machinery Co. (Bolivia), S. A.
Casilla 852

● **Brazil, Rio de Janeiro**
Ingersoll-Rand S. A., Ind. e Com.
Caixa Postal 939-ZC-00

● **Brazil, Sao Bernardo**
Ingersoll-Rand S.A. Ind. e Com.
Caixa Postal 911

● **Chile, Santiago**
Grace y Cia (Chile) S. A.
International Machinery Div.
Casilla 107-D

● **Colombia, Bogota**
Maquinarias Ingersoll-Rand
de Colombia, S. A.
Apartado Aereo 7451

● **Ecuador, Quito**
Ing. J. Espinosa Z.
Casilla 220-A

● **French Guiana, Cayenne**
Cheneaux & P de Reynal
B P 255

● **Guadeloupe, Pointe-a-Pitre**
Etablissements Hayot et Simmonet
Route de Abymes

● **Guyana, Georgetown**
Associated Industries Ltd.
51 Camp & Robb Sts.

● **Martinique Fort-de-France**
Cheneaux & P de Reynal
Boite Postale 49

● **Peru, Lima**
Ingersoll-Rand Co. of Peru, S.A.
Casilla 2261

● **Surinam, Paramaribo**
Surinam Machinery Co., Ltd.
P. O. Box 1808

● **Uruguay, Montevideo**
General Electric, S. A.
Casilla de Correo 360

● **Venezuela, Caracas**
Ingersoll-Rand de Venezuela S.A.
Apartado 70588, Los Ruices

EUROPE

● **Austria 1111, Vienna**
Ingersoll-Rand Ges M. B. H.
P. O. Box 76

● **Belgium, B-1920 Diegem**
Ingersoll-Rand Benelux
Kouterstraat 10-12

● **Cyprus, Nicosia**
N. P. Lanitis Co., Ltd.
P.O. Box 1696

● **Denmark, Albertslund, DK 2620**
Ingersoll-Rand AB
Herstedvang 11

● **England, London, SW1X 7LU**
Ingersoll-Rand Co., Ltd.
Bowater House
Knightsbridge

● **Scotland, Glasgow S.1**
Ingersoll-Rand Co., Ltd.
21 Shawland Arcade

● **Finland, Helsinki**
Oy Polytrade AB
Hallonngagatan 20C

● **Finland, Tampere**
Rotator Oy
Hatanpaanvaltie 38

● **France, Boulogne-Billancourt (Seine)**
Compagnie Ingersoll-Rand
19/29 Rue du General Gallieni

● **Greece, Athens**
"ATE" Avras S. A. I. C.
P. O. Box 1250 Omonia

● **Germany, 403 Ratingen**
Ingersoll-Rand GmbH
Robt. Zapp Str.
Postfach 1380

EUROPE (Continued)

● **Iceland, Reykjavik**
Elding Trading Co. Inc.
Hafnarhvoli-Tryggvagvatu

● **Ireland, Dublin 12**
Ingersoll-Rand Company (Ireland) Ltd.
John F. Kennedy Drive
Bluebell

● **Italy, 20060 Vignate-Milano**
Ingersoll-Rand Italiana, S.p.A.
Casella Postale 1232

● **Netherlands, Pynacker**
Ingersoll-Rand Benelux
26D Delftsestraatweg

● **Norway, Oslo 1**
Maskin a/s K. Lund & Co.
Revierstredet 3

● **Portugal, Lisbon**
Ingersoll-Rand Lda.
Apartado 2933

● **Spain, Madrid**
Cia. Ingersoll-Rand S. A.
Apartado 518

● **Sweden, 25 Bromma 1**
Ingersoll-Rand AB
Fack, S-161

● **Switzerland, Zurich CH-8023**
Robert Achi S. A.
P.O. Box 2034

● **Turkey, Istanbul**
Hamamcioglu Muesseseleri Ticaret
T.A.S.
P. O. Box Sisli 283

● **Yugoslavia, Zagreb**
Brodoherkur
Jurisicera 2/II

AUSTRALASIA

● **Victoria, South Melbourne 3205**
Ingersoll-Rand (Australia) Ltd.
42 Moray Street

● **New South Wales 2065, Sydney**
Ingersoll-Rand (Australia) Ltd.
P. O. Box 328 Crows Nest

● **West Australia, Perth**
Ingersoll-Rand (Australia) Ltd.
P. O. Box 209 Cloverdale W. A. 6105

● **Queensland 4105**
Ingersoll-Rand (Australia) Ltd.
c/o P.O.—Moorooka, Queensland

● **South Australia, 5001 Adelaide**
Ingersoll-Rand (Australia) Ltd.
P. O. Box 178-C GPO

● **Tasmania, 7001 Hobart**
Ingersoll-Rand (Australia) Ltd.
G.P.O. Box 564 F

● **New Zealand, Auckland**
The Fletcher Steel and Engineering
Companies, Ltd.
Great South Road, Penrose

CENTRAL AMERICA and the WEST INDIES

● **Costa Rica, San Jose**
H. T. Purdy, Inc.
Apartado 750

● **Dominican Republic, Santo Domingo**
Dominican Motors C por A
Apartado 894

● **Guatemala, Guatemala City**
Cia. Guatemalteca de Maquinaria, S. A.
Apartado 1363

● **Haiti, Port-au-Prince**
Charles Fequiere & Cia.
P. O. Box 398

● **Honduras, Tegucigalpa, D. C.**
Distribuidores de Repuestos, S. A.
Apartado Postal No. 46

● **Jamaica, Kingston**
R. Ehrenstein & Co., Ltd.
P. O. Box 414

● **Netherlands West Indies, Curacao**
S. E. L. Maduro & Son, Inc.
P.O. Box 304

● **Nicaragua, Managua D. N.**
Equipos y Accesorios S. A.
Apartado 2019

● **Puerto Rico, San Juan 00936**
Ingersoll-Rand de Puerto Rico Inc.
P. O. Box 1222

CENTRAL AMERICA and the WEST INDIES (Continued)

● **Republic of Panama, Panama**
Distribuidora Sonsonate S. A.
Apartado 10049

● **Salvador, San Salvador**
Cia. Importadora de Maquinaria S.A.
Calle Roosevelt y 53 Avenida

● **West Indies, Trinidad**
Port-of-Spain
Neal & Massy Ltd.
P. O. Box 1298

ASIA and THE EAST

● **Abu-Dhabi (Arabian Gulf)**
Al Nasr Trading Co.
P. O. Box 983

● **Aden (So. Yemen)**
Awad Salem Baobeid & Son
P. O. Box 184

● **Afghanistan, Kabul**
Indamer, Afghan Industries
P. O. Box 37

● **Bahrain, Manama**
Alawi Stores
P. O. Box 154

● **Cambodia, Phnom-Penh**
Mine and Construction Equipment Ltd.
c/o China Engineers Ltd. P.O. Box 42
Tauen Wan, Hong Kong

● **Ceylon, Colombo**
C.I.A.S. Ltd.
P. O. Box 610

● **Dubai, Deira (Arabian Gulf)**
Al Nasr Trading Co.
P. O. Box 1106

● **Hong Kong**
China Engineers Ltd.
P. O. Box 42 Tauen Wan

● **India, Bombay 18**
Ingersoll-Rand (India) Private Ltd.
P. O. Box 16564, Worli

● **India, Calcutta**
Ingersoll-Rand (India) Private Ltd.
7 Wellesley Pl., P. O. Box 2307

● **Indonesia, Bandung**
P. T. Kiagoos Trading & Ind. Co.
28-30 Djalang Karyawan

● **Indonesia, Djakarta**
P. T. Kiagoos Trading & Ind. Co.
P. O. Box 2107

● **Indonesia, Palembang**
P. T. Kiagoos Trading & Ind. Co.
Dj. Djend
Sudirman Km 4

● **Iran, Teheran**
Shaya Company Ltd.
P. O. Box 155

● **Iran, Tehran**
Diesel Power Trading Co. Ltd.
P. O. Box 1454

● **Israel, Tel-Aviv**
Engineering & Mfg. Co. Ltd.
7 Rothschild Blvd., P. O. Box 1191

● **Japan 107, Tokyo**
Ingersoll-Rand (Japan) Ltd.
Sumitomo Akasaka Bldg., 6th Floor
3-3, 3 Chome, Akasaka
Minato-Ku

● **Jordan, Amman**
Industrial Supplies Co.
P. O. Box 108

● **Korea, Seoul**
Mine and Construction Equipment Co.
I. P. O. Box 2016

● **Kuwait, State of Kuwait**
Trading & Industrial Equip. Co.
P. O. Box 2159

● **Lebanon, Beirut**
Midcast Auto & Trading Co.
P. O. Box 4766

● **Malaysia, Petaling Jaya**
Ingersoll-Rand South East Asia (Pte) Ltd.
No. 2 Jalan 215
Selangor

● **Okinawa, Ryukyus Island**
The China Engineers Ltd.
Construction Equipment Div.
C. P. O. Box 30, Naha

● **Pakistan, Karachi**
Javed Ltd.
19 W. Wharf Rd., P. O. Box 5191

ASIA and The EAST (Continued)

● **Philippines, Makati, Rizal D-708**
Ingersoll-Rand Philippines, Inc.
P. O. Box 445

● **Qatar, Doha**
Dawish & Co.
P. O. Box 889

● **Saudi Arabia, Jeddah**
Zahid Heavy Machinery Co., Ltd.
P. O. Box 1588

● **Singapore 2**
Ingersoll-Rand South East Asia (Pte) Ltd.
No. 601, Maxwell House
Maxwell Road

● **Syria, Damascus**
Geo. R. Kaba
19 Balkis St., P. O. Box 2205

● **Taiwan, Taipei**
China Engineers Ltd.
P. O. Box 1148

● **Thailand, Bangkok**
Mine and Construction Equipment Ltd.
P. O. Box 2775

● **S. Vietnam, Saigon**
Construction Equipment Corp.
P. O. Box 1224

AFRICA

● **Republic of South Africa**
Transvaal, Alrode via Alberton
Ingersoll-Rand Co. So. Africa (Pty.) Ltd.
P. O. Box 3720

● **Cape Province, Capetown**
Ingersoll-Rand Co. So. Africa (Pty.) Ltd.
P. O. Box 21, Eppindust

● **Cape Province, Port Elizabeth**
Ingersoll-Rand Co. South Africa (Pty.) Ltd
P. O. Box 1028

● **Cape Province, Kimberley**
Ingersoll-Rand Co. So. Africa (Pty.) Ltd.
P. O. Box 129

● **Natal, Durban**
Ingersoll-Rand Co. So. Africa (Pty.) Ltd.
P. O. Box 2595

● **Orange Free State, Welkom**
P. O. Box 374

● **Angola, Luanda**
META S. A. R. L.
Caixa Postal 3175

● **Egypt, Cairo**
The Tractor & Engineering Co., S.A.E.
P. O. Box 366

● **Ethiopia, Addis Ababa**
The Motor & Engineering Co. of Ethiopia Ltd
P. O. Box 1767

● **Ghana, Accra**
Cie Francaise de L'Afrique Occidentale
P. O. Box 2710

● **Kenya, Nairobi**
Gilfillan & Co. Ltd.
P. O. Box 30044

● **Libya, Tripoli**
Hussein N. Sufraki
P. O. Box 3283

● **Morocco, Casablanca**
Ingersoll-Rand Maroc
Etablissements Peggary
29 bis, Rue Mohamed Diouri

● **Mauritius, Port Louis**
Blyth Brothers and Co. Ltd.
P. O. Box 56

● **Nigeria, Apapa**
Nigerian Motor Industries, Ltd.
P. M. Bag 1032, 26 Wharf Road

● **Portuguese East Africa, Lourenco Marques**
Santos Marques and Silva Limitada
P. O. Box 166

● **Sierre Leone, Freetown**
Cie Francaise de L'Afrique Occidentale
P. O. Box 823

● **Senegal, Dakar**
Compagnie Francaise de
L'Afrique Occidentale

● **Sudan, Khartoum**
Mahgoub M. A. & Co. Ltd.
P. O. Box 577

● **Tunisia, Tunis**
Mine-Usine et Comptoir des Mines Reunis
11, Avenue de Carthage

● **Zambia, Ndola**
Ingersoll-Rand Company, Ltd.
P. O. Box 74