

# Installation Instructions for ADAPTER PLATE REPLACEMENT

This instruction sheet and parts list provides information for service personnel to replace the FA2A adapter plate. This sheet should be used in conjunction with Parts, Operation and Maintenance Manual form MHD56117.

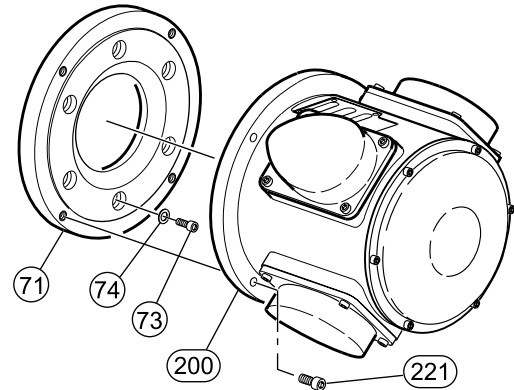
## REMOVAL OF OLD ADAPTER PLATE

Refer to Dwg. MHP1862

Refer to 'Winch Disassembly' instructions in Manual MHD56117 for complete procedures to remove motor.

1. Remove capscrews (223) and pull motor assembly (200) away from upright. Discard capscrews.
2. Remove capscrews (73) and washers (74) from adapter plate (71). Discard adapter plate.

Drive shaft may come out with motor. Place drive shaft and coupling back onto input shaft of reduction gear in winch.



(Dwg. MHP1862)

## INSTALLATION OF NEW ADAPTER PLATE

Refer to Dwg. MHP1863

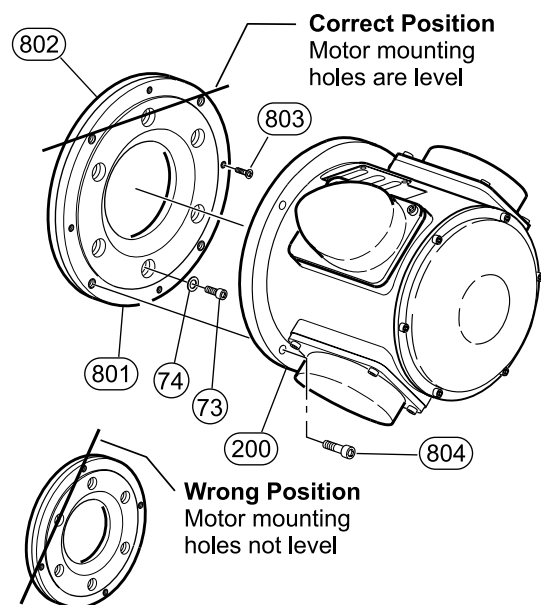
Refer to 'Winch Assembly' instructions in Manual MHD56117 for complete procedures to assembly motor to winch.

1. Apply a bead of Loctite® 515 on upright mounting surface.
2. Metal ring of adapter assembly must face upright. Align the adapter plate mounting holes in such a manner that the motor mounting holes are level.
3. Use capscrews (73) and washers (74) secure New adapter plate assembly to upright.
4. Apply a bead of Loctite® 515 to motor mounting surface of adapter plate.
5. Align drive shaft with crankshaft in motor assembly (200) and press motor onto adapter plate. Secure with New capscrews (804).

### Kit Components

ITEM NO.	DESCRIPTION OF PART	QTY TOTAL	PART NUMBER
800	Adapter Kit	1	27295
801	Motor Adapter*	1	27292
802	Ring Adapter*	1	27293
803	Capscrew*	4	51976
804	Capscrew	4	71325039

\* Components come assembled from the factory



(Dwg. MHP1863)

MHD56204

Edition 1

April 1999

71356745

©1999 Ingersoll-Rand Company

**INGERSOLL-RAND**  
**MATERIAL HANDLING**

## United States Office Locations

### For Order Entry, Order Status and Technical Support

**Ingersoll-Rand  
Material Handling**  
P.O. Box 24046  
2724 Sixth Avenue South  
Seattle, WA 98124-0046  
Phone: (206) 624-0466  
Fax: (206) 624-6265

**Ingersoll-Rand  
Distribution Center**  
P.O. Box 618  
510 Hester Drive  
White House, TN 37188  
Phone: (615) 672-0321  
Fax: (615) 672-0801

**Web Site:**  
[www.ingersoll-rand.com](http://www.ingersoll-rand.com)

### Regional Sales Offices

**Chicago, IL**  
888 Industrial Drive  
Elmhurst, IL 60126  
Phone: (630) 530-3800  
Fax: (630) 530-3891

**Detroit, MI**  
23192 Commerce Drive  
Farmington Hills, MI 48335  
Phone: (248) 476-6677  
Fax: (248) 476-6670

**Houston, TX**  
450 Gears Road  
Suite 210  
Houston, TX 77067-4516  
Phone: (281) 872-6800  
Fax: (281) 872-6807

**Los Angeles, CA**  
11909 E. Telegraph Road  
Santa Fe Springs,  
CA 90670-0525  
Phone: (562) 948-4189  
Fax: (562) 948-1828

**Philadelphia, PA**  
P.O. Box 425  
900 E. 8th Ave., Suite 103  
King of Prussia, PA 19406  
Phone: (610) 337-5930  
Fax: (610) 337-5912

## International Office Locations

Offices and distributors in principal cities throughout the world. Contact the nearest **Ingersoll-Rand** office for the name and address of the distributor in your country or write/fax to:

**Ingersoll-Rand  
Material Handling**  
P.O. Box 24046  
2724 Sixth Avenue South  
Seattle, WA 98124-0046  
USA  
Phone: (206) 624-0466  
Fax: (206) 624-6265

**Canada  
National Sales Office  
Regional Warehouse  
Toronto, Ontario**  
51 Worcester Road  
Rexdale, Ontario  
M9W 4K2  
Phone: (416) 213-4500  
Fax: (416) 213-4510  
**Order Desk**  
Fax: (416) 213-4506

### Regional Sales Offices

**Edmonton, Alberta**  
1430 Weber Center  
5555 Calgary Trail N.W.  
Edmonton, Alberta  
T6H 5G8  
Phone: (403) 438-5039  
Fax: (403) 437-3145

**Montreal, Quebec**  
3501 St. Charles Blvd.  
Kirkland, Quebec  
H9H 4S3  
Phone: (514) 695-9040  
Fax: (514) 695-0963

**British Columbia**  
1200 Cliveden Avenue.  
Delta, B.C.  
V3M 6G4  
Phone: (604) 523-0803  
Fax: (604) 523-0801

**Latin America Operations  
Ingersoll-Rand  
Production Equipment  
Group**  
730 N.W. 107 Avenue  
Suite 300, Miami, FL  
33172-3107  
Phone: (305) 559-0500  
Fax: (305) 222-0864

**Europe, Middle East and  
Africa  
Ingersoll-Rand  
Material Handling  
Douai Operations**  
111, avenue Roger Salengro  
59450 Sin Le Noble, France  
Phone: (33) 3-27-93-08-08  
Fax: (33) 3-27-93-08-00

**Asia Pacific Operations  
Ingersoll-Rand**  
Suite 1201-3 12/F  
Central Plaza  
18 Harbour Road  
Wanchai, Hong Kong  
Phone: (852) 9794 1673  
Fax: (852) 9794 7895

**Russia  
Ingersoll-Rand**  
Kuznetsky Most 21/5  
Entrance 3  
Moscow 103895  
Russia  
Phone: (7) 501 923 9134  
Fax: (7) 501 924 4625