

CONVERSION KIT 26638 for FA2.5A and FA5A Winches with PENDANT AND EMERGENCY STOP

This instruction sheet provides information for service personnel to retro-fit the Pendant and Emergency Stop with the *NEW* Pendant and Emergency Stop assembly.

This sheet should be used in conjunction with the Parts, Operation and Maintenance Manual.

PROCEDURES

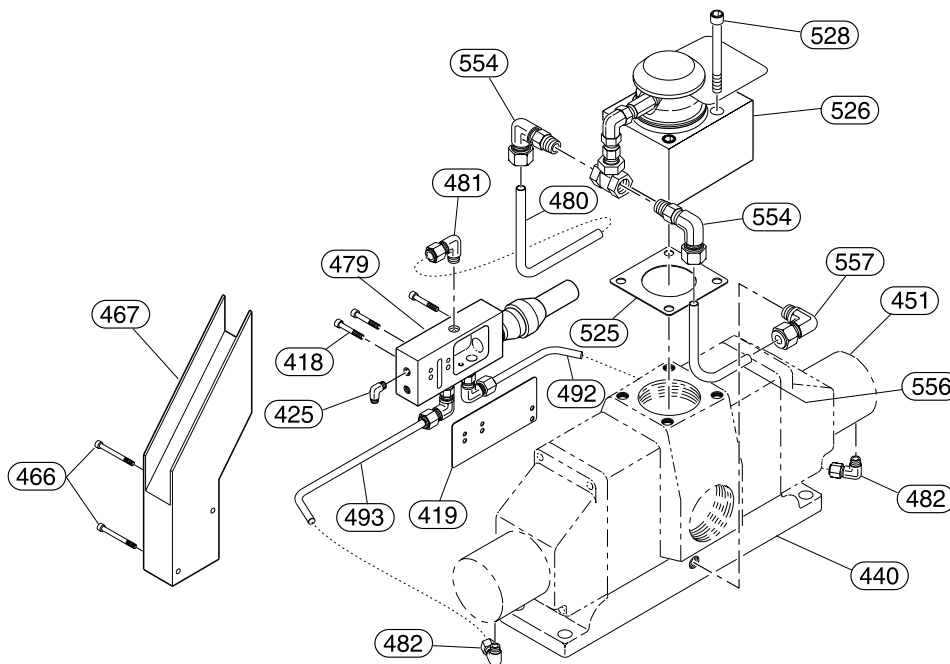
Disassembly

Throughout this instruction sheet there are steps and procedures which, if not followed, may result in a hazard. Refer to the Parts, Operation and Maintenance Manual MHD56087 (FA5A) or MHD56114 (FA2.5A) for an explanation of these signal words which are used to identify the level of potential hazard.

Read the instructions listed in the 'Maintenance' section of the manual prior to performing this procedure.

1. Disconnect brake line from fitting (425).

2. Loosen fittings (481, 482, 554 and 557) and remove tubes (480, 492, 493 and 556).
3. Remove capscrews (418) and remove shuttle valve assembly (479) and gasket (419) from control valve, discard shuttle valve and gasket.
4. Remove fittings (482) from end caps (451) on control valve and adapter plate (440).
5. Remove capscrews (466) and pendant bracket (467) and discard both.
6. Remove capscrews (528). Remove old emergency stop valve body (526) and gasket (525), discard both.



(Dwg. MHP1748)

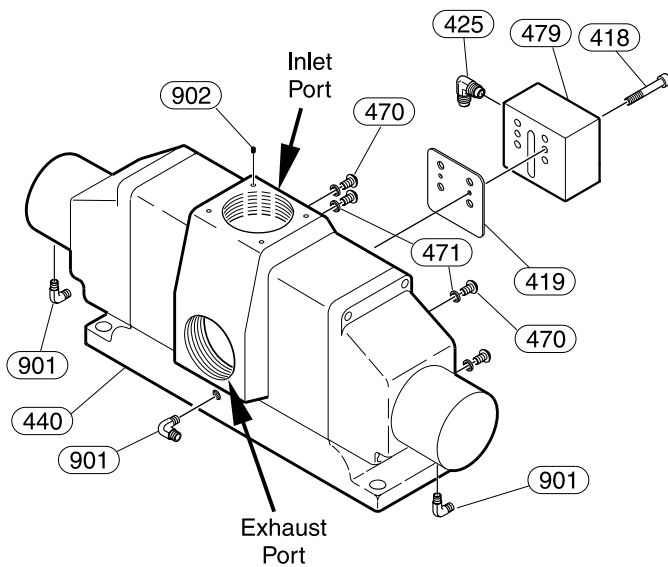
Assembly

1. Insert capscrews (418) through lower holes in new shuttle valve (479) and new gasket (419). Place onto control valve body and tighten.

NOTICE

• **Ensure fitting(s) (425) are facing to the rear of the winch and pointed down. Refer to Dwg. MHP1749.**

2. Use capscrews (470) and seal washers (471) to seal open ports, formally covered by old shuttle valve and pendant bracket.
3. Install fittings (901) in both control valve end caps and port in adapter plate (440).
4. Insert setscrews (902) into mounting holes in top of control valve. Tighten until flush with valve surface.
5. Separate union (903) and insert nipple (904) portion of assembly into inlet port on control valve and tighten.



(Dwg. MHP1749)

NOTICE

• **The elbow on nipple (904) maybe pointed to the front or rear of the control valve depending on winch installation.**

6. Attach shut-off valve assembly (905) to union and tighten.
7. Connect hose (906) from shuttle valve to fitting (901) on adapter plate.
8. Connect yellow pendant hose to fitting (901) on front end cap.
9. Connect green pendant hose to fitting (901) on rear end cap.

NOTICE

• **The hose connections (yellow and green) may be swapped to change drum rotation, depending on operator preference.**

10. Connect brake line(s) to fitting (425) on shuttle valve.

Refer to Parts, Operation and Maintenance Manual for testing, prior to placing unit back into service.

