

# INSTRUCTION SHEET

## FA5A WINCH OPTIONAL K5B CONTROL VALVE INSTALLATION

Form MHD56134

This instruction sheet covers the installation of a K5B style Control Valve. This control valve must only be used on winches equipped with the standard disc brake. Winches equipped with, automatic drum brake, overload, or emergency stop must use the standard control valve. This sheet gives authorized service personnel the information needed to install the optional control valve.

This instruction sheet should be used in conjunction with the FA5A Parts, Operation and Maintenance Manual, form MHD56087.

### OPERATION

#### Control Valve

The control valve directs the air flow through the FA5A motor. This allows the operator to control the direction and speed of winch drum. The K5B style control valve does not support any of the options available to the FA'A' series winches.

#### WARNING

• The K5B control valve is **NOT** interchangeable with the control valve on the FA series winches. This control valve version does not have a port for brake release in the haul-in position (required on FA series winches).

### INSTALLATION

#### WARNING

• Never perform maintenance on the winch while it is supporting a load.

• Before performing maintenance, tag controls:

**DANGER - DONOT OPERATE -  
EQUIPMENT BEING REPAIRED**

• Turn off air system and depressurize air line before performing any maintenance.

#### Control Valve Removal

1. Remove air supply line.
2. Remove control valve exhaust muffler (if installed).
3. Remove air line from brake to shuttle valve (479).
4. Loosen capscrews (442) and remove control valve assembly (400). Capscrews (442) cannot be removed without taking adapter (440) off valve body, this is not necessary.

5. Remove old gasket (248) from adapter (440) and rotary valve housing (247).

#### Control Valve Installation

1. Place new gasket (248) onto rotary valve housing.
2. Place control valve assembly (400) on the rotary valve housing and insert capscrews (331) through washers (304) into valve housing and tighten capscrews (331) to 34 ft lb (46 Nm).
3. Connect brake line to fitting (310) on control valve and tighten.
4. Connect muffler to control valve exhaust (if necessary).
5. Attach air supply line to valve and tighten.

#### Testing

1. Turn on air to winch.
2. Operate winch in haul-in direction and verify proper operation.
3. Operate winch in payout direction and verify proper operation, including complete release of disc brake.

Form MHD56134

Edition 1

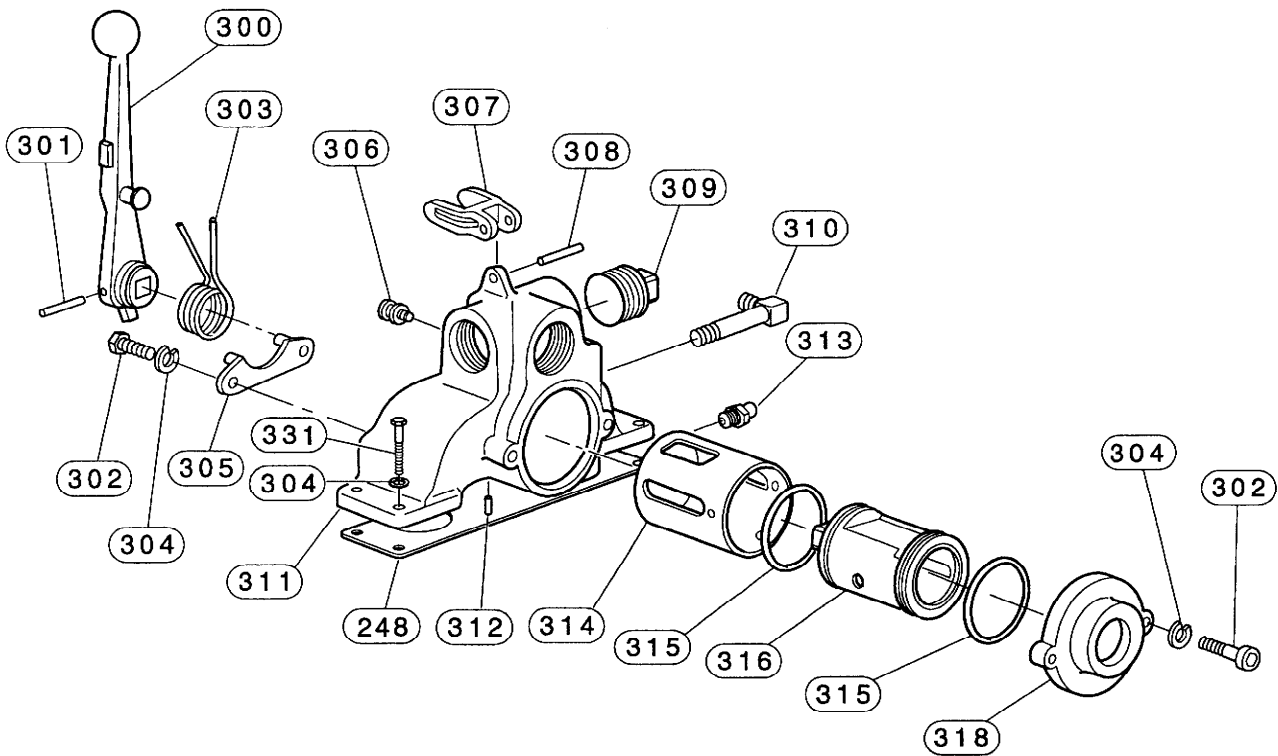
March 1997

71324503

© 1997 Ingersoll-Rand Company

**INGERSOLL-RAND**  
**MATERIAL HANDLING**

# CONTROL VALVE KIT ASSEMBLY DRAWING AND PARTS LIST



(Dwg. MHP1232)

ITEM NO.	DESCRIPTION OF PART	QTY TOTAL	PART NUMBER	ITEM NO.	DESCRIPTION OF PART	QTY TOTAL	PART NUMBER
---	Control Valve Kit (Incls all listed items)	1	26063	308	Roll Pin	1	HLK-20
400	* Valve Assembly	1	26065	309	Pipe Plug	1	E5UD-947
248	Gasket	1	K5B-547	310	Fitting	1	71149975
300	Handle	1	K5B-556P	311	Valve Housing (Incl's items 312 and 314)	1	26062
301	Roll Pin	1	K5B-1115	312	Pin	1	25A13C92
302	Capscrew	4	71317465	313	Grease Fitting	1	53095
• 303	Spring	1	K5B-412	314	Valve Bushing	1	†
304	Washer	8	51581	• 315	Seal Ring	2	K5B-606
305	Retainer	1	K5B-1110AP	316	Valve Body	1	K5B-944
306	Spring Retaining Stud	1	K5B-553	318	Exhaust Flange	1	KK5B-276SP
307	Latch	1	K5B-869AP	331	Capscrew	4	71324917

\* Does not include items 248, 304, 310, or 331.

• Recommended spare.

† Available only as part of item 311.