

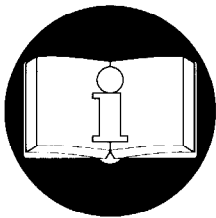
# **MODEL 2UW WINCH**

with

## **FREEWHEEL CLUTCH**

### **MANUAL SUPPLEMENT\***

\* This supplement should be used in conjunction with the Model 2UW Winch Parts, Operation and Maintenance Manual Form P6777.

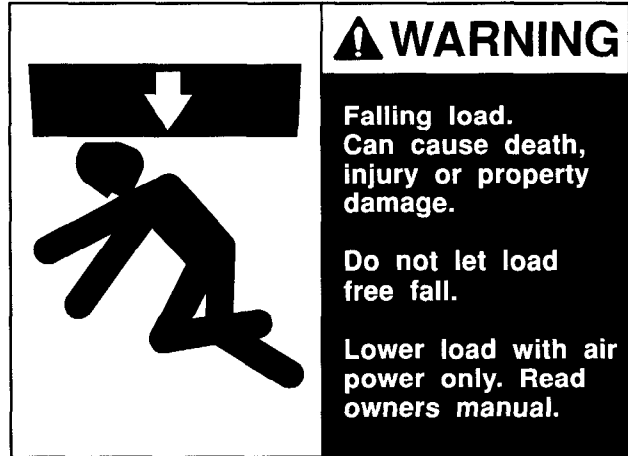


**READ THIS SUPPLEMENT BEFORE USING THESE PRODUCTS.** This supplement contains important safety, installation, operation and maintenance information. Make this supplement available to all persons responsible for the operation, installation and maintenance of these products.

**Always operate, inspect and maintain this winch in accordance with American National Standards Institute Safety Code (ANSI B30.7) and all other applicable safety codes and regulations.**

## WARNING LABEL

Winches equipped with a freewheel clutch are supplied from the factory with the warning label shown. If the label is not attached to your winch, order a new label and install it. See the parts list for the part number. Read and obey all warnings and other safety information attached to the winch. Label may not be shown actual size.



Do not remove tag. P/N 2UW-1112

(Dwg. MHTPA0229)

## OPERATION

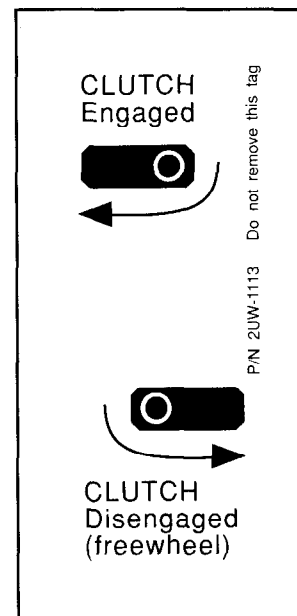
### To Let Out Unloaded Wire Rope (Freewheel Clutch)

(See Assembly Drawing MHTPA0226)

#### **WARNING**

- To avoid injury to personnel and damage to equipment due to a falling load, disconnect the load before disengaging the drum to freewheel.
  - Never attempt to disengage the clutch if the drum is moving.
1. Make sure there is no load on the winch.
  2. Disengage the drum by turning the lever (205) away from the gear case cover (200) to lock in free-spool. (Ref. Clutch direction label drawing MHTPA0228)
  3. Pull end of wire rope to desired location.
  4. Engage the drum by turning the lever (205) toward the gear case cover (200).

Winch gear case cover (200) must be positioned to this side of clutch direction label (215).



(Dwg. MHTPA0228)

## LUBRICATION

Lubricate washer (216) and 'O' Ring (208) located under lever (205) monthly with clean grease. Use sufficient grease to provide a good protective coat. For temperatures -20° to 50° F (-29° to 10° C) use a multipurpose lithium-based EP 1 grease. For temperatures 30° to 120° F (0° to 49° C) use a multipurpose lithium-based EP 2 grease.

## MAINTENANCE

### WARNING

- Never perform maintenance on the winch while it is supporting a load.
- Before performing maintenance, tag controls:  
**DANGER - DO NOT OPERATE - EQUIPMENT BEING REPAIRED.**
- Only allow qualified service personnel to perform maintenance.
- Turn off air system and depressurize air lines before performing any maintenance.

### Disassembly

Substitute the following disassembly instructions for steps 4 through 10 in the Model 2UW Winch Parts, Operation and Maintenance Manual Form number P6777.

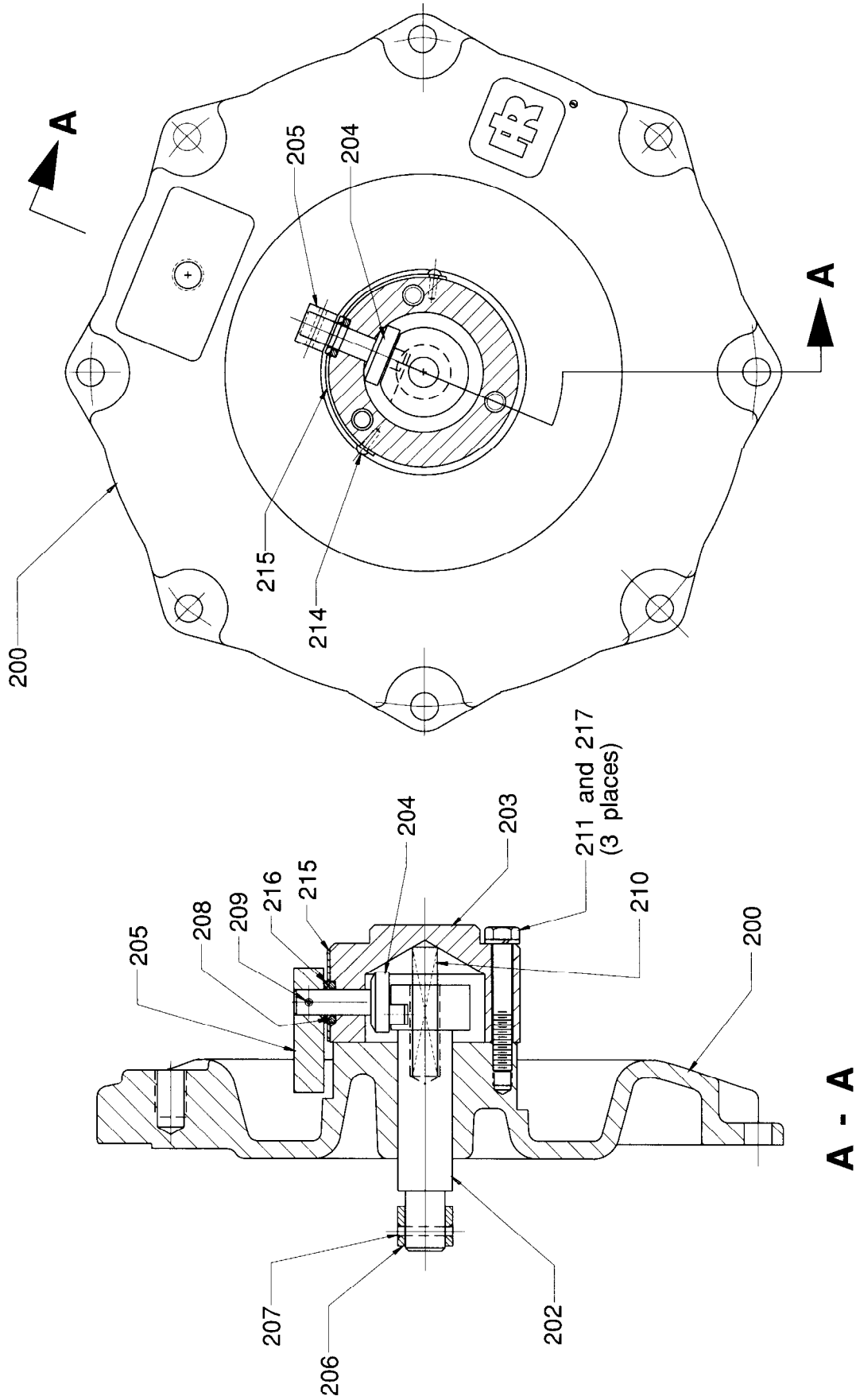
1. Remove the eight gear case cover capscrews (68) and lockwashers (69).
2. Using a small, flat blade screwdriver, pry the gear case cover (200), with freewheel clutch parts, from the gear case (60). **Note:** Some oil may still be in the gear case and will spill out when the gear case cover (200) is removed.
3. Using a small punch tap spring pin (207) from sleeve (206) and pull sleeve and clutch jaw (44) from shaft (202).
4. Carefully tap out spring pin (209) and pull lever (205) from eccentric shaft (204).
5. Remove washer (216) and 'O' ring (208).
6. Remove three capscrews (211) and lockwashers (217) from cap (203).
7. Separate cap (203) from gear case cover (200) and remove shaft (202), spring (210) and eccentric shaft (204).

### Assembly

Substitute the following disassembly instructions for steps 17 through 24 in the Model 2UW Winch Parts, Operation and Maintenance Manual Form number P6777.

1. Install eccentric shaft (204) through hole in cap (203) from the bore side.
2. Slide shaft (202) through center bore of gear case cover (200).
3. Install spring (210) in bore of shaft (202). Position cap (203) over spring (210) and shaft (202) so capscrew holes are aligned with those in the gear case cover (200). Ensure spigot on eccentric shaft (204) locates in the slot on shaft (202).
4. Install capscrews (211) and lockwashers (217) and torque to 8 ft.lb (11 N m).
5. Install new 'O' ring (208) and washer (216) on eccentric shaft (204).
6. Position lever (205) on eccentric shaft (204) so pin holes are aligned. Tap spring pin (209) into position until flush with lever.
7. Install clutch jaw (44) and sleeve (206) on shaft (202). Rotate sleeve (206) until spring pin hole is aligned and install spring pin (207)
8. Install gear case cover (200) with freewheel clutch parts on gear case (60). Secure with eight gear case cover capscrews (68) and lockwashers (69). Torque to 28 ft. lb (38 N m).

# FREEWHEEL CLUTCH PARTS DRAWING



(Dwg. MHTPA0226)

## FREEWHEEL CLUTCH PARTS LIST

The new design freewheel clutch is standard on all 2UW winches serial number SRD01001 and up.

ITEM NO.	DESCRIPTION OF PART	QTY TOTAL	PART NO.
---	Clutch Kit (Incl's items 200 through 217)	1	2UW-A1115
200	Gear Case Cover	1	2UW-352A
202	Shaft	1	2UW-1101
203	Cap	1	2UW-1104
204	Eccentric Shaft	1	2UW-1857
205	Lever	1	2UW-1565
206	Sleeve	1	2UW-1102
207	Spring Pin	1	2UW-1106
• 208	'O' Ring	1	2UW-1107
• 209	Spring Pin	1	5UT-762
210	Spring	1	2UW-1108
211	Capscrew	3	2UW-1109
213	Clutch Warning Label	1	2UW-1112
214	Drive Screw	8	C32-302
215	Clutch Direction Label	1	2UW-1113
• 216	Washer	1	2UW-1117
217	Lockwasher	3	L01-67

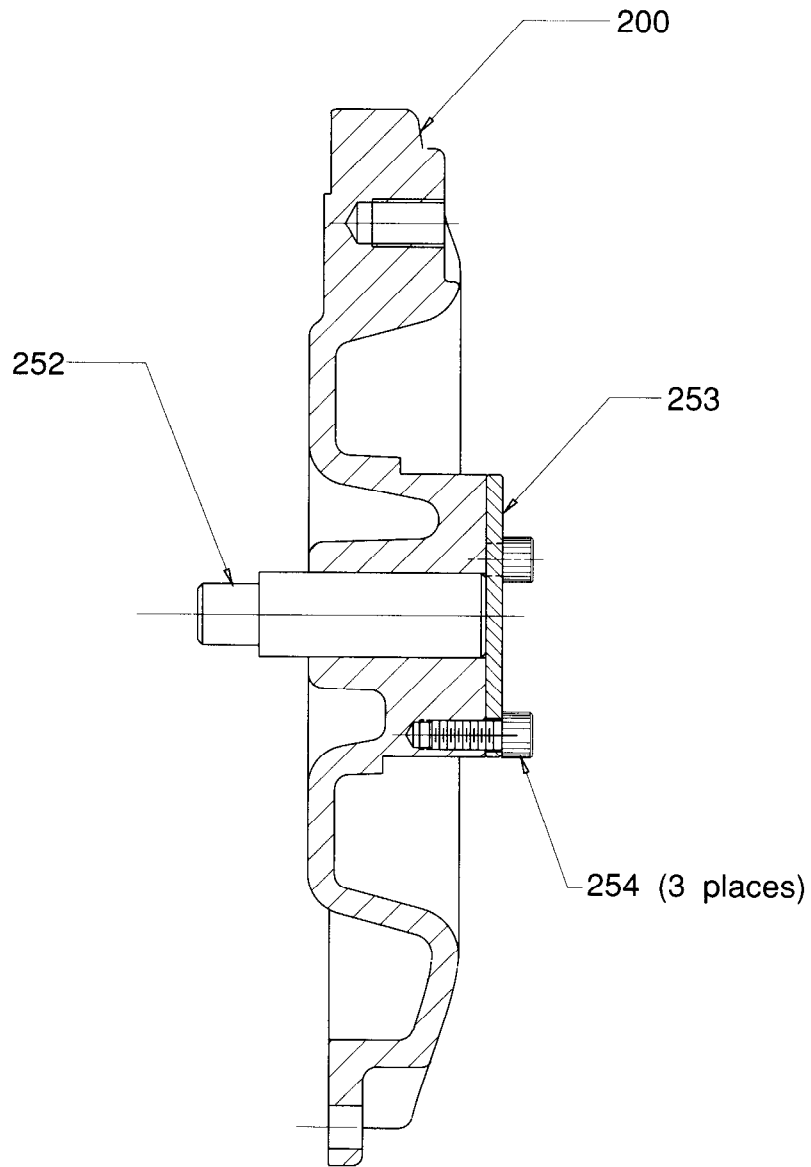
• Recommended Spare

The following parts are no longer available and are replaced by clutch kit part number 2UW-A1115.

Refer to Model 2UW Winch Parts, Operation and Maintenance Manual Form Number P6777 for item numbers.

ITEM NO.	DESCRIPTION OF PART	QTY TOTAL	PART NO.
44	Clutch Jaw Kit	1	2UW-K568
48	Clutch Shaft	1	2UW-857
49	Clutch Handle Kit	1	2UW-K673
51	Outer Cup	1	2UW-963
52	Clutch Spring	1	2UW-700
53	Inner Cup	1	2UW-962
54	Screws	4	2UW-964
85	Drive Screws	5	R4K-302
86	Clutch Tag	1	2UW-96

**PARTS DRAWING FOR WINCH WITHOUT FREEWHEEL FEATURE**



(Dwg. MHTPA0227)

## PARTS LIST FOR WINCH WITHOUT FREEWHEEL FEATURE

This option provides a continuous positive drive between the air motor and wire rope drum.

Parts list for 2UW winch without freewheel option.

ITEM NO.	DESCRIPTION OF PART	QTY TOTAL	PART NO.
---	Kit (Incl's items 200, 252 through 254)	1	2UW-A1116
200	Gear Case Cover	1	2UW-352A
252	Shaft	1	2UW-1103
253	Cover	1	2UW-1105
254	Capscrew	3	2UW-1110

## United States Office Locations

### For Order Entry and Order Status:

#### Ingersoll-Rand Distribution Center

510 Hester Drive  
P.O. Box 618  
White House, TN 37188  
Phone: (615) 672-0321  
Telex: 786573  
Fax: (615) 672-0801

#### Ingersoll-Rand Material Handling Technical Support

2724 Sixth Avenue South  
P.O. Box 24046  
Seattle, WA 98124-0046  
Phone: (206) 624-0466  
Telex: 328795  
Fax: (206) 624-6265

#### Regional Sales Offices

##### Atlanta, GA

111 Ingersoll-Rand Drive  
Chamblee, GA 30341  
Phone: (404) 936-6230

##### Detroit, MI

23192 Commerce Drive  
Farmington Hills, MI 48335  
Phone: (313) 476-6677  
Fax: (313) 476-6670

##### Houston, TX

2500 East T.C. Jester  
Suite 150  
Houston, TX 77008  
Phone: (713) 864-3700

##### Los Angeles, CA

5533 East Olympic Blvd.  
Los Angeles, CA 90022  
Phone: (213) 725-2826

##### Milwaukee, WI

12311 W. Silver Spring Dr.  
Milwaukee, WI 53225  
Phone: (414) 461-0973

##### Philadelphia, PA

900 E. 8th Ave., Suite 103  
P.O. Box 425  
King of Prussia, PA 19406  
Phone: (215) 337-5930

## International

Offices and distributors in principal cities throughout the world. Contact the nearest Ingersoll-Rand office for the name and address of the distributor in your country or write/fax to:

Ingersoll-Rand  
Material Handling  
P.O. Box 24046 Seattle,  
WA 98124-0046 USA  
Phone: (206) 624-0466  
Telex: 328795  
Fax: (206) 624-6265

### Canada

#### National Sales Office Regional Warehouse Toronto, Ontario

51 Worcester Road  
Rexdale, Ontario  
M9W 4K2  
Phone: (416) 675-5611  
Fax: (416) 675-6920

#### Regional Sales Offices

##### Calgary, Alberta

333 11th Avenue S.W.  
Calgary, Alberta  
T2R 0C7  
Phone: (403) 261-8652

##### Montreal, Quebec

3501 St. Charles Blvd.  
Kirkland, Quebec  
H9H 4S3  
Phone: (514) 695-9040

##### British Columbia

201-6351 Westminster Hwy  
Richmond, B.C.  
V7C 5C7  
Phone: (604) 278-0459

##### British Columbia Regional Warehouse Technical Support

123 Bowser Avenue  
North Vancouver, British Columbia V7P 3H1  
Phone: (604) 985-4470  
Fax: (604) 985-0160

### Latin America Operations

#### Ingersoll-Rand Production Equipment Group

730 N.W. 107 Avenue  
Suite 300, Miami, FL  
33172-3107  
Phone: (305) 559-0500  
Telex: 441617TLS UI  
Fax: (305) 559-7505

### Europe, Middle East and Africa

#### Ingersoll-Rand Material Handling

**Samiia, Douai Operations**  
111, avenue Roger Salengro  
59450 Douai, France  
Phone: (33) 27-93-08-08  
Fax: (33) 27-93-08-00

### Asia - Pacific

#### Ingersoll-Rand (Japan) Ltd.

Kowa Bldg. No. 17  
2-7 Nishi-Azabu 1-chome  
Minato-ku, Tokyo 106,  
Japan  
Phone: (03) 3403-0641/7  
Fax: 81 3 3401-2049