

PALAIR PLUS AIR CHAIN HOIST

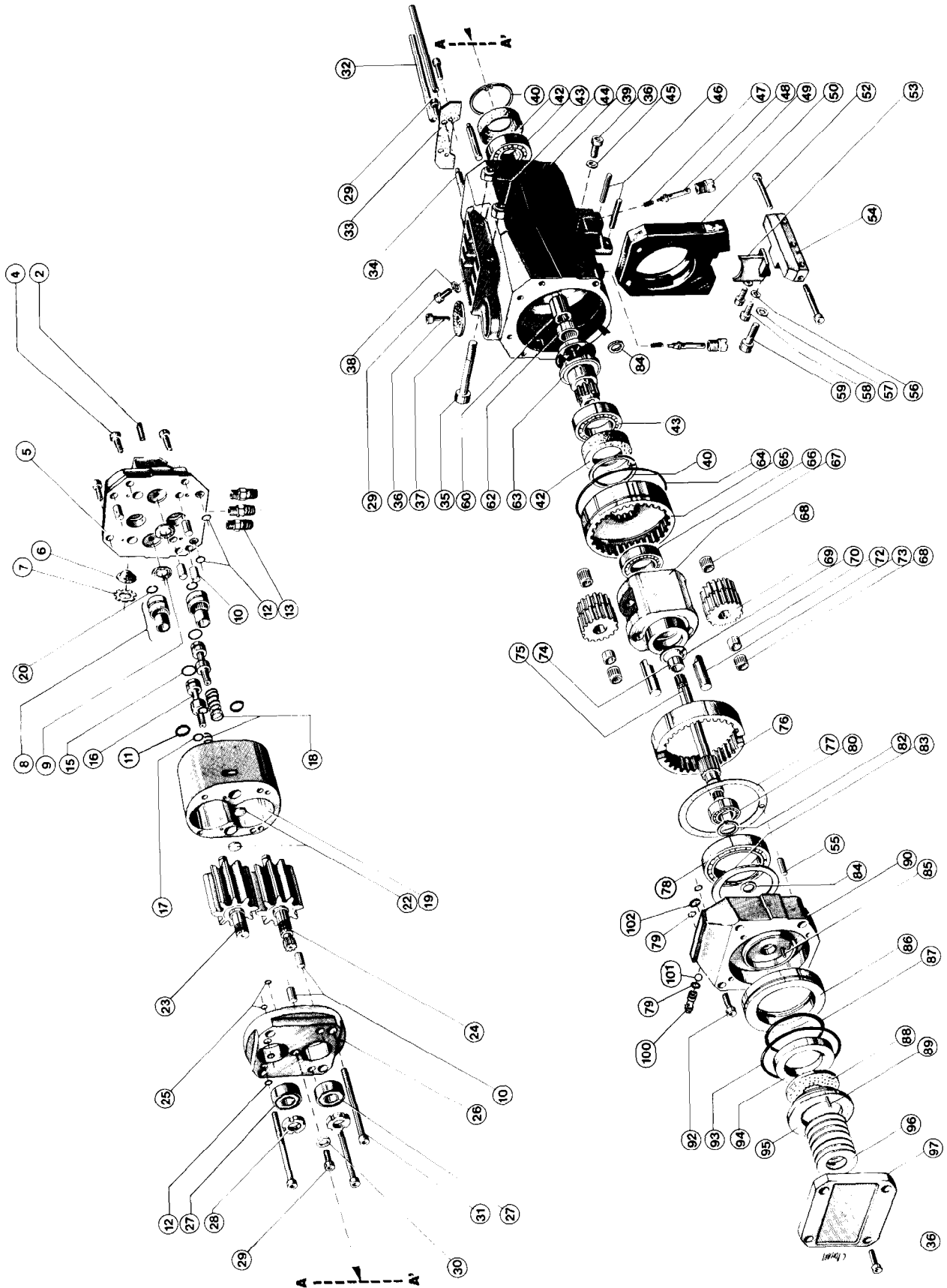
Hoist Upgrade Information Supplement

Information contained in this supplement should be used in conjunction with the Palair Plus Hoist, Operation and Maintenance Manual Form No. MHD56043.

All Palair Plus Hoists with serial numbers ending with the letter 'E' or with the serial number 940100 and higher incorporate the changes covered in this supplement.

For additional information or assistance contact your local distributor or factory technical support.

HOIST ASSEMBLY DRAWING



(Dwg. MHTPB0235/A)

HOIST ASSEMBLY PARTS LIST

ITEM NO.	DESCRIPTION OF PART	TOTAL QTY.	PART NO.
2	Screw	1	4200-5507
4	Capscrew	4	4130-1006
5	Motor Cover	1	9609-0079
6	Filter	1	6190-9028
7	Stop Ring	1	4770-3018
8	Bearing	2	5646-1912
9	Stop	2	9609-0042
10	Pin	6	4600-0416
● 11	'O' Ring	2	5823-1229
● 12	'O' Ring	6	5821-2229
13	Fitting	3	6165-2632
● 15	'O' Ring	2	5822-8929
16	Slide Valve (Standard)	2	9424-0212
	Slide Valve (High Precision)		9609-0084
● 17	'O' Ring	2	5820-5029
18	Spring	2	9424-0224
19	Motor Housing	1	9609-0007
20	Retainer Ring	2	4780-1339
22	Slide Valve	2	9412-0030
23	Idle Gear	1 set	3609-0128
24	Driving Gear		
● 25	'O' Ring	2	5822-2329
26	Motor Flange	1	9609-0008
27	Bearing	2	5060-0002
28	Nut	2	5700-0002
29	Capscrew	1	4130-6706
30	Washer	1	9609-0032
31	Capscrew	4	4130-0806
32	Tube	2	9609-0055
33	Screen	1	9609-0057
34	Shaft	2	9609-0040
35	Capscrew	2	4134-9606
36	Capscrew	6	4130-0106
37	Silencer	1	9609-0056
38	Washer	1	4500-0106
39	Gear Casing	1	9609-0002
40	Retainer Ring	2	4770-3067
42	Ring	2	9609-0076
43	Bearing	2	5005-0007
44	Nut	2	4370-2311
45	Washer	1	4500-0106
46	Pin	2	9609-0027
47	Spring	2	6916-0332
48	Limit Switch	2	9609-0051
49	Limit Switch Body	2	9609-0050
50	Chain Guide	1	9609-0019
52	Capscrew	2	4130-0406
53	Chain Guide Stop	1	9609-0020

ITEM NO.	DESCRIPTION OF PART	TOTAL QTY.	PART NO.
54	Chain Holder	1	9609-0013
55	Pin	2	4600-1716
56	Washer	2	4520-0004
57	Washer	1	4520-0008
58	Capscrew	2	4131-3606
59	Capscrew	1	9609-0098
60	Coupling	1	9609-0034
62	Bearing	1	5632-1512
63	Sprocket	1	9609-0009
● 64	'O' Ring	1	5821-6129
65	Ring Gear (Standard)	1	9609-0094
	Ring Gear (High Precision)		9609-0037
66	Bearing	1	5080-0005
	Planet Carrier		9609-0014
68	Bearing (Standard)	4	5650-1513
	Bearing (High Precision)		5650-1613
69	Planet Gear (Standard)	1 set	3609-0129
	Planet Gear (High Precision)		3609-0130
70	Retainer Ring	1	4770-3032
72	Spacer (Standard)	2	9609-0095
	Spacer (High Precision)		9609-0026
73	Planet Pin	2	9609-0039
74	Bearing	1	5636-2432
75	Pinion	1	9609-0035
76	Ring Gear	1	9609-0038
77	Gasket	1	9609-0041
78	Bearing	1	5080-0009
● 79	'O' Ring	3	5821-2229
80	Bearing	1	5000-0002
82	Retainer Ring	1	4770-0015
83	Spring Washer	1	6916-0432
84	'U' Cup Seal	2	5801-9830
85	Pin	1	4640-4618
86	Piston	1	9609-0113
● 87	'O' Ring	1	5823-2229
● 88	Brake Friction Disc	1	9609-0049
89	Pin	1	4640-6118
90	Brake Cover	1	9609-0004
92	Capscrew	4	4131-4906
● 93	'O' Ring	1	5823-2329
● 94	Brake Disc	1	9609-0047
● 95	Brake Disc	1	9609-0113
96	Spring Washer	7	6916-0532
97	Cover	1	9609-0005
99*	Nameplate	1	71070031
100	Shuttle Spool	1	9609-0223
101	Shuttle Ball	1	6940-1625
● 102	'O' Ring	1	5822-1729

● Recommended Spare

* Not Shown

The Design Update Summary provides details of the Palair Plus Hoist modifications and parts interchangeability in hoists with serial numbers prior to 940100.

Design Update Summary

Part Number	Item Number	Part Description	Design Change Information	Interchangeability
9609-0049	88	Brake Friction Disc	Increased hardened spline length and improved friction material.	Yes
9609-0035	75	Pinion	Hardened spline.	Yes
9609-0034	60	Coupling	Hardened spline.	Yes
3609-0128	24	Driving Gear	Hardened splines. Supplied as matched set with idle gear.	Yes
3609-0129 or 3609-0130	69	Planet Gear	Holes added for improved lubrication. Supplied in sets of two gears.	Yes
9609-0094 or 9609-0037	65	Ring Gear	Holes added for improved lubrication.	Yes
5801-9830	84	'U' Cup Seal	Larger 'U' Cup seal. Replaces 'U' Cup seal 5801-7430.	No, requires new brake cover (90) and modified sprocket (63).
9609-0004	90	Brake Cover	Modified to accommodate new 'U' Cup seal (84) and shuttle spool components.	Yes, with shuttle spool components (79), (100) (101), (102) and new 'U' Cup seal (84).
5632-1512	62	Bearing	Replaces bearing 5632-2115.	No
9609-0009	63	Sprocket	Modified to accommodate new 'U' Cup seal (84) and bearing (62).	No
9609-0223	100	Shuttle Spool	New items. Requires new brake cover (90) which is drilled to accommodate shuttle spool.	No
6940-1625	101	Shuttle Ball		
5821-2229	79	Shuttle Spool 'O' Ring		
5822-1729	102	'O' Ring	Required to seal port to shuttle spool.	No

Effectivity of Changes

The above changes are included on all hoists with serial numbers ending with the letter 'E' and hoists with the serial number 940100 and higher.

Sprocket Bearing Assembly

- Lubricate and install bearing (62) on sprocket (63). Install 'U' Cup seal (84) on sprocket with lip of seal facing away from the bearing.

Assembly Notes

In the event it becomes necessary to disassemble the hoist for inspection or service refer to the "MAINTENANCE" section in the Palair Plus Operation and Maintenance Manual Form No. MHD56043. In addition the following assembly instructions are needed for the new parts.

Shuttle Spool Assembly

- Lubricate and carefully install 'O' ring (79) in the groove on shuttle spool (100). Avoid overstretching 'O' ring. Install ball (101) in drilled hole in brake cover (90). Screw shuttle spool (100) into brake cover until tight.