

PARTS MANUAL
for
LECTRA-LINK™
THREE PHASE
ELECTRIC CHAIN HOIST

MODELS

LE1

LE2

LE3

LE4

LE5

⚠ WARNING

Do not use these Hoists for lifting, supporting, or transporting people or lifting or supporting loads over people.

Always operate, inspect and maintain these Hoists in accordance with American National Standards Institute Safety Code (B30.16) and any other applicable safety codes and regulations.

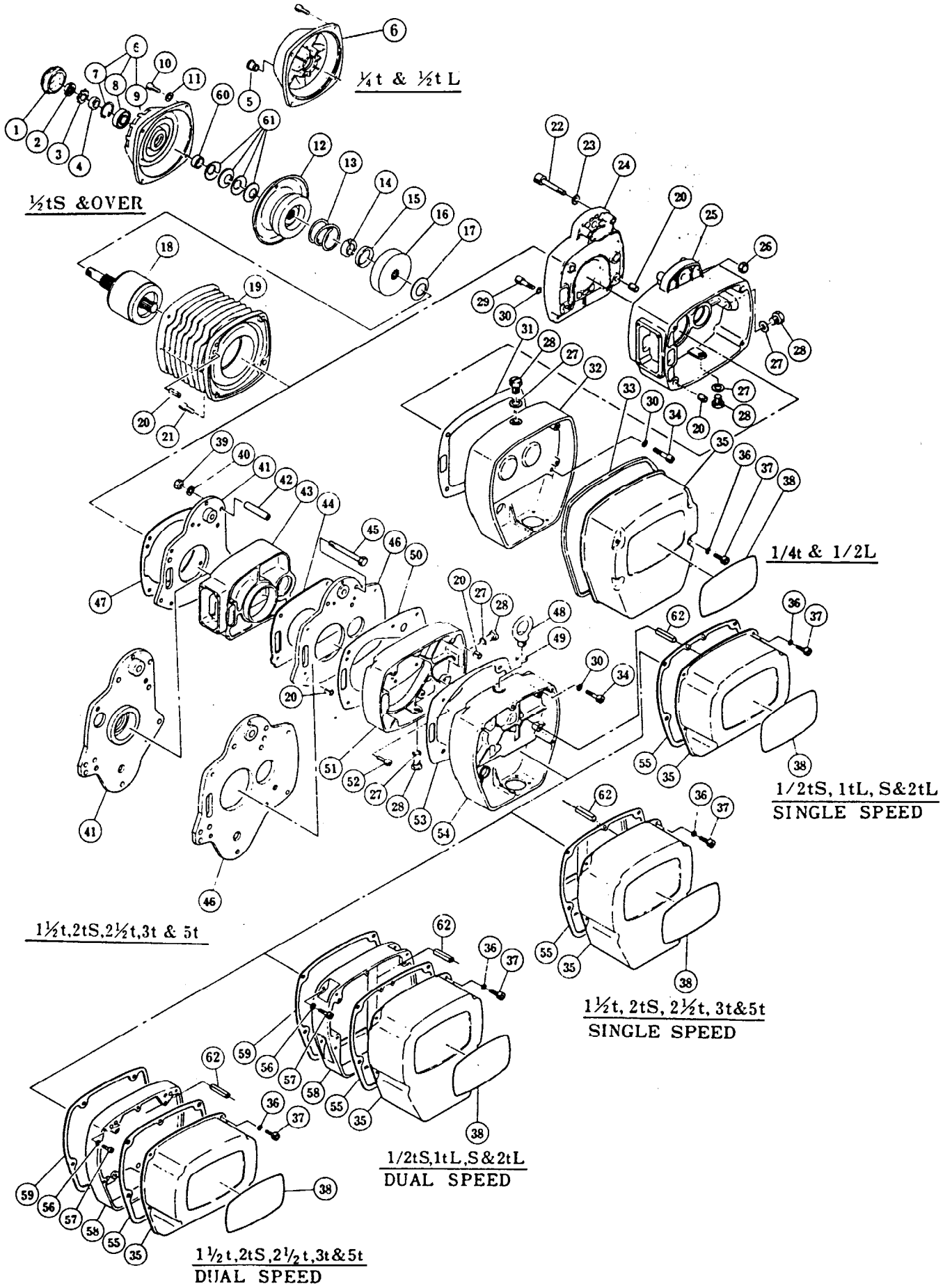
Refer all communications to the nearest Ingersoll-Rand Material Handling Products Office or Distributor.

Form MHD56023
Edition 4
November 1995
71052765

© 1995 Ingersoll-Rand Company

INGERSOLL-RAND®
MATERIAL HANDLING

HOUSING AND MOTOR PARTS DRAWING



HOUSING AND MOTOR PARTS LIST

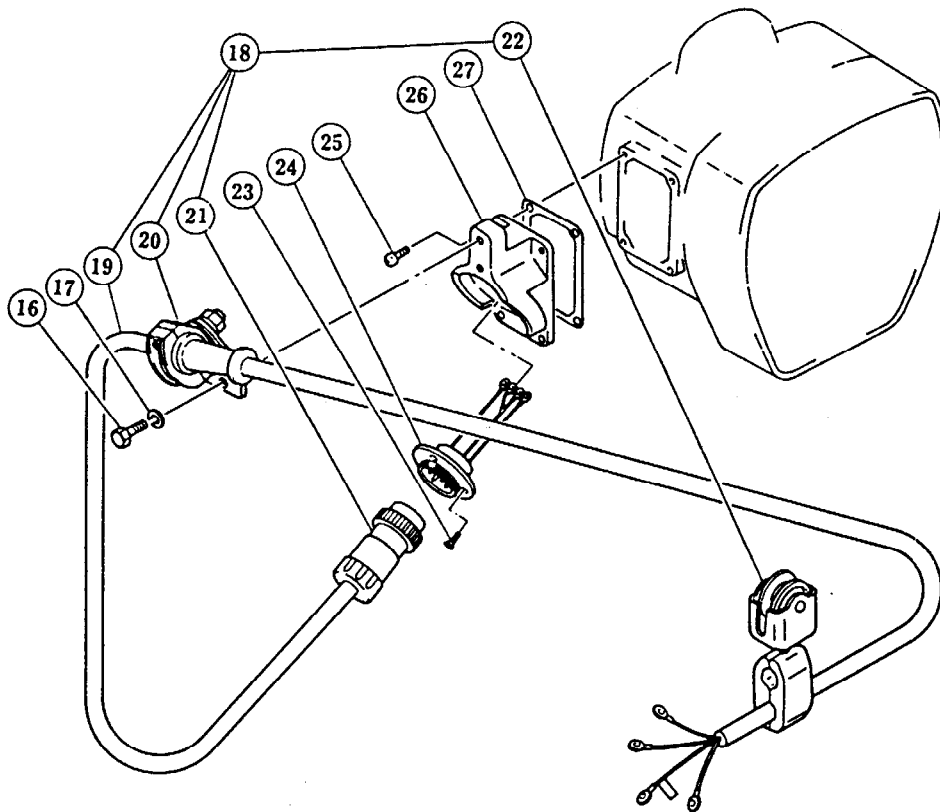
ITEM NO.	DESCRIPTION OF PART	QTY TOTAL		PART NUMBER										
				LE1		LE2		LE3		LE4			LE5	
				1/4	1/2-L	1/2-S	1-L	1-S	2-L	1-1/2	3	2-S	2-1/2	5
1	Cover	S	1	70000		70000		70001		70002				
		D		70001										
2	Nut	S	1	70003		70004		70005		70006				
		D		70005										
3	Lock Washer	S	1	70007		70008		70009		70010				
		D		70009										
4	Spacer	S	1	70011		70012		70013		70014				
		D		70013										
5	Plug		1	70015		---								
6	Motor Cover Assembly	S	1	70016		70017		70018		70019				
		D		70020										
7	Snap Ring	S	1	---		70024		70025		70026				
		D		70025										
8	Ball Bearing	S	1	71511		70027		70028		70029				
		D		70028										
10	Socket Bolt	S	4	70036		70037		70038		70039				
		D		70040										
11	Spring Washer	S	4	---		70041		70042		70043				
		D		70042										
12	Brake Drum Assembly	S	1	70044		70045		70046		70047				
		D		70048										
13	Brake Spring	S	1	70052		70053		70054		70055				
		D		70056										
14	Thrust Disc	S	2	70060		70061		70062		70063				
		D		70061										
15	Thrust Collar	S	1	70064		70065		70066		70067				
		D		70065										
16	Pull Rotor	S	1	70068		70069		70070		70071				
		D		70069										
17	Coned-Disc Spring	S	1	70072		70073		70074		70075				
		D		70073										
18	Motor Shaft With Rotor	S	1	70076		70077		70078		70079				
		D		70080										
19	Motor Frame with Stator	S	1	70084		70085		70086		70087				
		D		70088										
20	Set Pin		4	70092		---								
			6	---		70092		70093						
21	Socket Bolt		4	70095		70096		70097		70098				
22	Socket Bolt		2	70099		---								
23	Washer		2	70100		---								
24	Body M		1	70101		---								
25	Body G		1	70102		---								
26	U Nut with Cap		2	70103		---								

HOUSING AND MOTOR PARTS LIST

ITEM NO.	DESCRIPTION OF PART	QTY TOTAL		PART NUMBER										
				LE1		LE2		LE3		LE4			LE5	
				1/4	1/2-L	1/2-S	1-L	1-S	2-L	1-1/2	3	2-S	2-1/2	5
27	Plug Packing	3		70104		---								
		2		---		70104								
28	Oil Plug	3		70105		---								
		2		---		70106								
29	Socket Bolt	2		70107		---								
30	Toothed Lock Washer	6		70108		---								
		4		---		70108		70109		---				
		5		---		---								
31	Gear Case Packing	1		70112		---								
		1		70113		---								
33	Controller Cover Gasket	1		70114		---								
34	Socket Bolt	4		70115		70116								
		5		---		70118								
35	Controller Cover	S	1	70119		70120		70121		70122				
		D				70123		70124						
36	Spring Washer	4		70125		70126								
37	Socket Bolt	S	4	70127		70129		78128						
		D												
38	Name Plate	S	1	50046	50047	50048	50049	50050	50051	50052	50053	50054	50055	50056
		D		50057	50058	50059	50060	50061	50062	50063	50064	50065	50066	50067
39	Nut	4		---		70130		70131		70132				
40	Spring Washer	4		---		70133		70134		70135				
41	Frame M Assembly	1		---		70136		70137		70138				
42	Collar F	4		---		70139		70140		70141				
43	Body	1		---		70142		70143		70144				
44	Packing / Gasket	1		---		70145		70146		70147				
45	Bolt	4		---		70148		70149		70150				
46	Frame G Assembly	1		---		70151		70152		70153				
47	Packing / Gasket	1		---		70154		70155		70156				
48	Fill Plug / Eye Bolt	1		---		70157								
49	Eye Bolt Packing	1		---		70158								
50	Gear Case Packing A	1		---		70159		70160		70161				
51	Gear Case A	1		---		70162		70163		70164				
52	Socket Bolt	6		---		70165		70166						
53	Gear Case Packing B	1		---		70167		70168		70169				
54	Gear Case B	S	1	---		70170		70171		70172				
		D		---		70173		70174		70175				
55	Controller Cover Packing	1		---		70176		70177		70178				
* 56	Spring Washer	D	4	---		70179				70180				
* 57	Socket Bolt	D	4	---		70181				70182				
* 58	Balancer	D	1	---		70183		70184		70185				
* 59	Balancer Packing	D	1	---		70186		70187		70188				
60	Collar M	S	1	70189		70190		70191		70192				
		D		70190		70191								
61	Coned Disc Spring M	S	4	70193		70194		70195		70196				
		D		70194		70195								
62	Spring Pin	1		---		70198								

* Dual speed hoists only.

POWER SUPPLY PARTS DRAWING

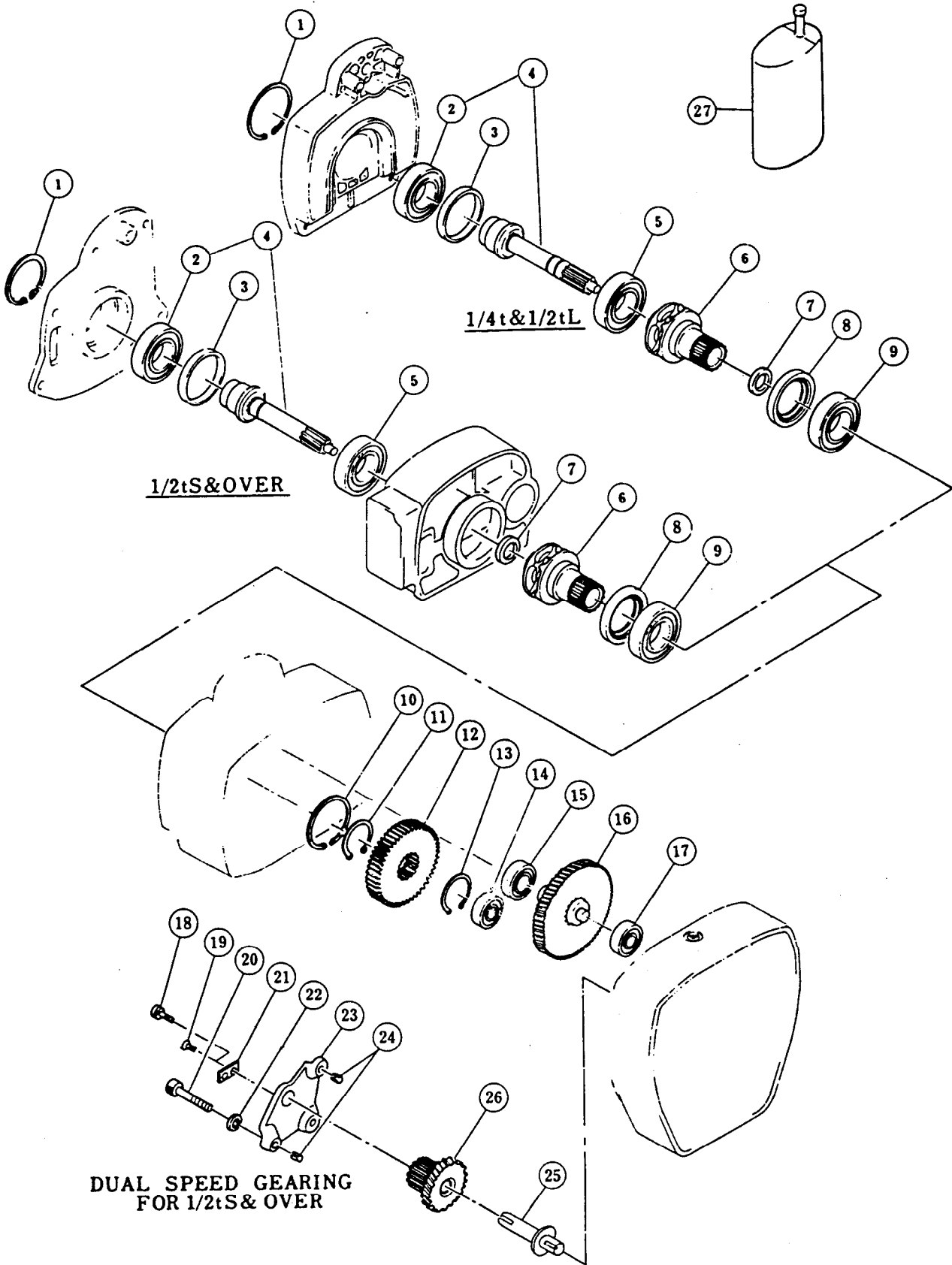


220/440V, 220V, 440V -60Hz & OTHER VOLTAGES

POWER SUPPLY PARTS LIST

ITEM NO.	DESCRIPTION OF PART	QTY TOTAL	PART NUMBER									
			LE1		LE2		LE3		LE4		LE5	
			1/4	1/2-L	1/2-S	1-L	1-S	2-L	1-1/2	3	2-S	2-1/2
16	Bolt	2	70564									
17	Spring Washer	2	70565									
18	Power Supply Cable Complete Set	1	70566									
19	Power Supply Cable 4C	1	70568									
20	Cable Clamp Arm Assembly	1	70570									
21	Plug 4P	1	70572									
22	Cable Hanger Assembly	3	70574									
23	Flat Head Machine Screw	4	70546									
24	Socket 4P Assembly	S	70575						70576			
		D							70577			
25	Machine Screw w/ Spring Washer	4	70578									
26	Socket Holder A	1	70579									
27	Socket Holder Packing A	1	70580	70581								

GEARING PARTS DRAWING

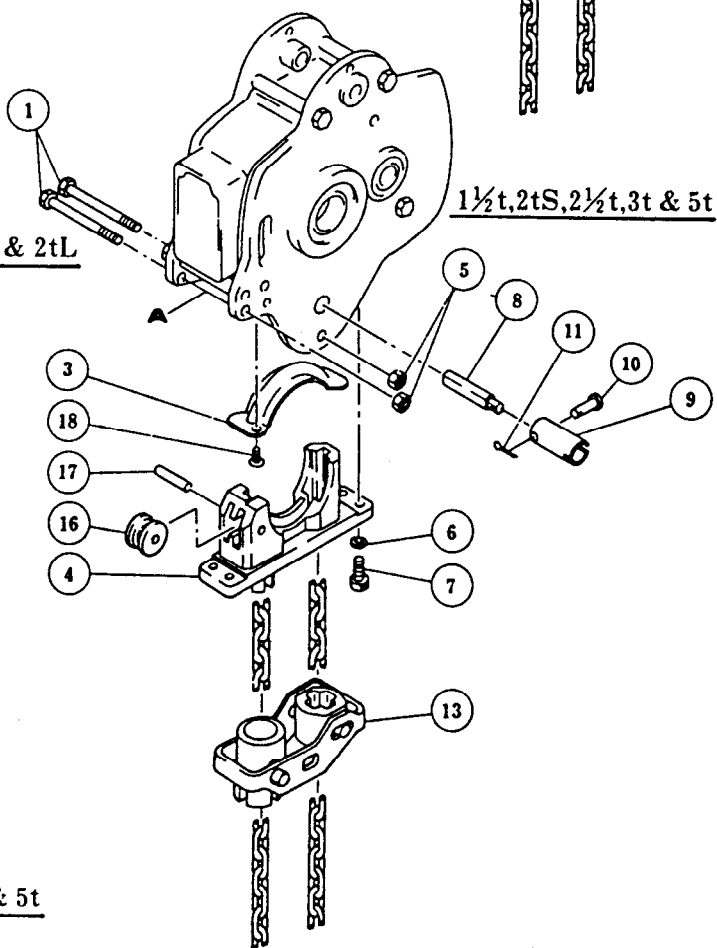
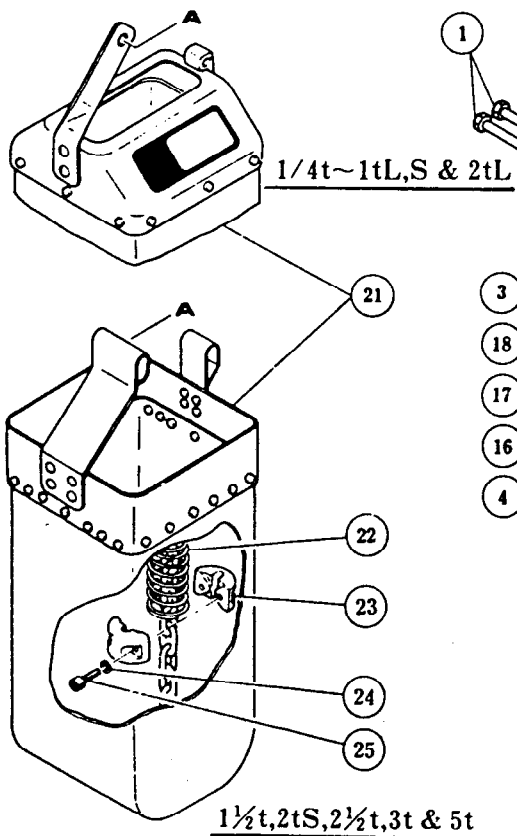
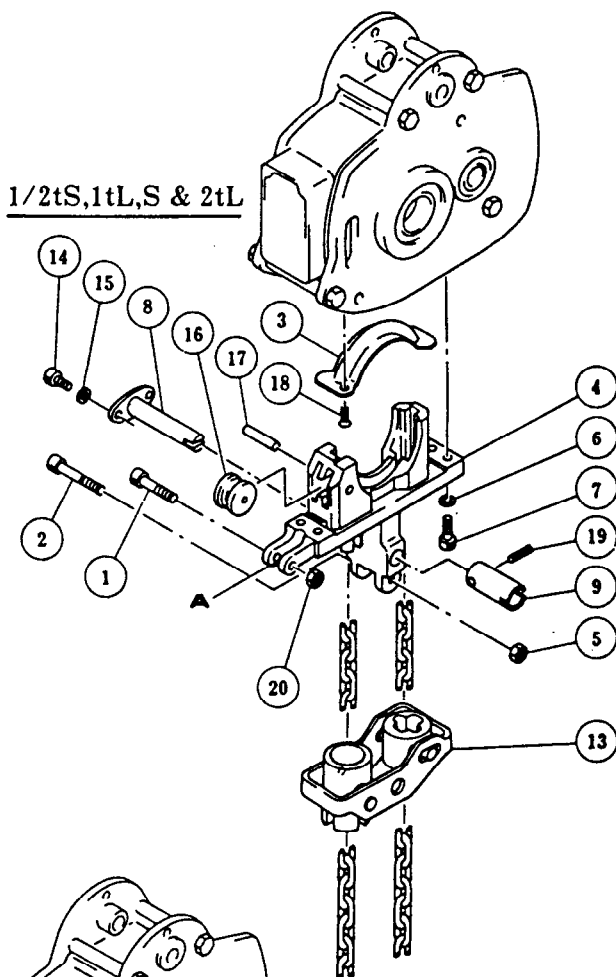
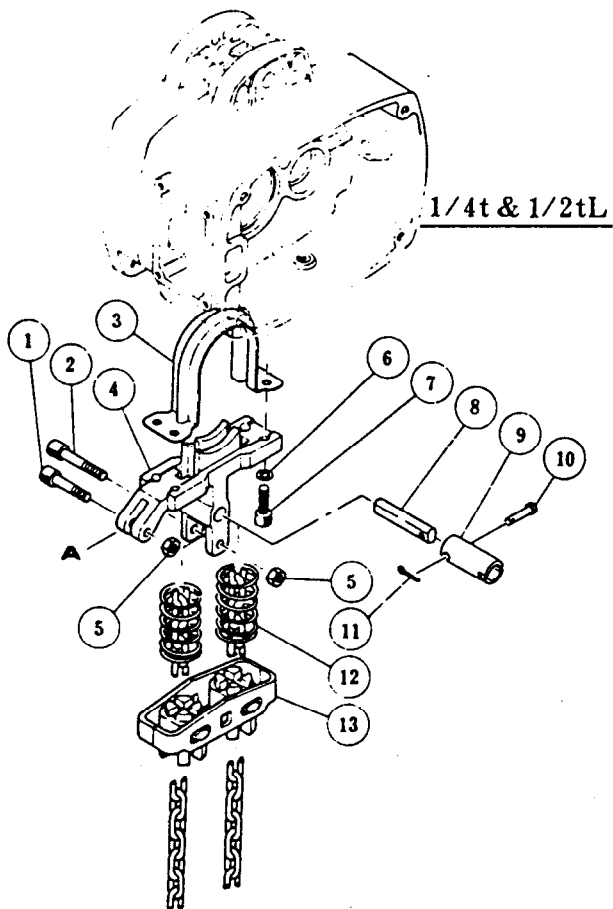


GEARING PARTS LIST

ITEM NO.	DESCRIPTION OF PART	QTY TOTAL		PART NUMBER											
				LE1		LE2		LE3		LE4			LE5		
				1/4	1/2-L	1/2-S	1-L	1-S	2-L	1-1/2	3	2-S	2-1/2	5	
1	Snap Ring	1		70110		70111		70199							
2	Ball Bearing	1		70200		70201		70202							
3	Collar B	1		70203		70204		70205							
4	Pinion Assembly	1		70206		70207		70208		70209					
5	Ball Bearing	1		70210		70211		70212		70213					
6	Load Sheave	1		70214		70215		70216		70217		70218			
7	Oil Seal	1		70219		70220		70221		70222					
8	Oil Seal	1		70223		70224		70225		70226					
9	Ball Bearing	1		70227				70228		70229					
10	Snap Ring	1		70230		---									
11	Snap Ring	1		70231		---									
12	Load Gear	S	1	70232		70233	70234	70235	70236	70237					
		D		70238											
13	Snap Ring	1		70239			70240		70241						
14	Ball Bearing	1		70242		70341		70243		70244					
15	Ball Bearing	1		70245		70246		70247		70248					
16	Gear #2 Assembly	S	1	70249		70250		70251		70252		70253		70254	
		D		70255		70256		70257		70258		70259		70260	
17	Ball Bearing	1		70261		70262		70263		70264					
* 18	Machine Screw w/ Spring Washer	2		---		---		---		70265					
* 19	Flat Head Machine Screw	2		---		70266				---					
* 20	Socket Bolt	3		---		70267		70268		70269					
* 21	Plate	1		---		70270				70271					
* 22	Spring Washer	3		---		70272		70273							
* 23	Gear Holder Plate	1		---		70274		70275		70276					
* 24	Set Pin	2		---		70092		70093							
* 25	Gear B Shaft	1		---		70094		70277		70278					
* 26	Gear B Assembly	1		---		70279		70280		70281					
27	Gear Oil	1		LE-Gear Oil											

* Dual Speed Hoists Only

CHAINING PARTS DRAWING



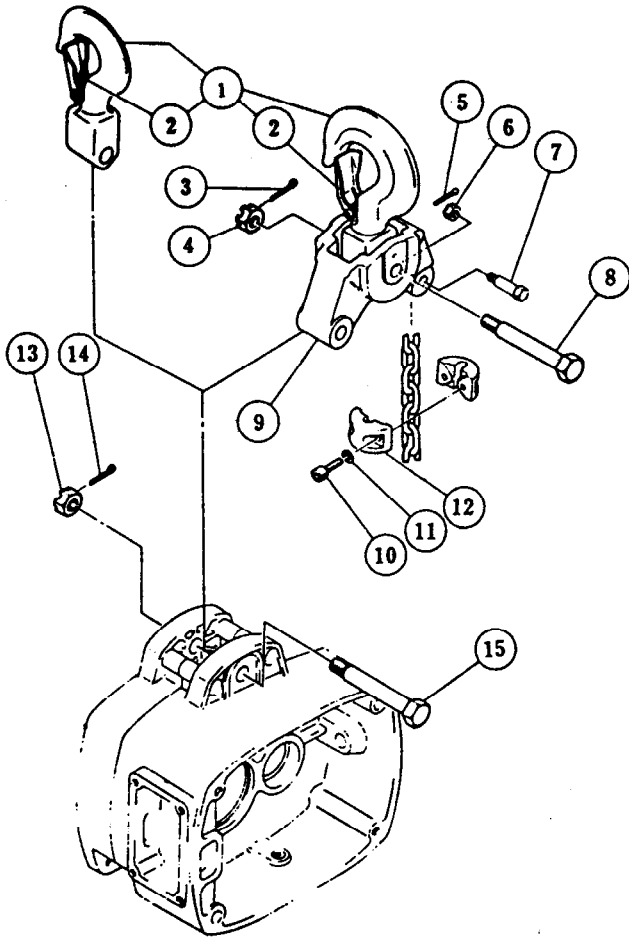
CHAINING PARTS LIST

ITEM NO.	DESCRIPTION OF PART	QTY TOTAL	PART NUMBER									
			LE1		LE2		LE3		LE4		LE5	
			1/4	1/2-L	1/2-S	1-L	1-S	2-L	1-1/2	3	2-S	2-1/2
1	Socket Bolt	1	70282		70283		---					
	Bolt	2	---					70284				
2	Socket Bolt	1	70285					---				
3	Chain Guide B	1	70286	70287	70288	70289		70290				
4	Chain Guide A	1	70291	70292	70293	70294		70295				
5	Nut	2	70296	---		70297						
		1	---	70296		---						
6	Spring Washer	4	70298			70299						
7	Socket Bolt	4	70300	70301	70302	70303						
8	Limit Lever Pin	1	70304	---		70305						
	Limit Lever Pin Assembly	1	---	70306		---						
9	Lever Pin Coupling	S	1	70307	70308	70309	70310					
		D			70311	70312						
10	Coupling Pin	1	70313	---		70314						
11	Split Pin	1	70315	---		70315						
12	Guide Spring	2	70317	---		---						
13	Limit Lever Assembly	1	70318	70319	70320	70321		70322				
14	Socket Bolt	2	---	70323		---						
15	Spring Washer	2	---	70324		---						
16	Guide Roller	1	---	70325	70326	70327		70328				
17	Roll Pin	1	---	70329	70330	70331						
18	Flat Head Machine Screw	2	---	70332		---						
	Machine Screw w/ Spring Washer			---		70333						
19	Spring Pin	1	---	70334		---						
20	U Nut	1	---	70335		---						
21	Chain Container **	L	1	CC-2	CC-3	CC-4	CC-6					
		S		CC-1	CC-2	CC-7	CC-5					
22	Chain Spring	S	1	70343	70344	70345	70346		70347			
		D		70348	70349	70350	70351		70352			
23	Stopper Assembly (includes Stopper and items 24 & 25)	2	71505	70777		71724		71524				
24	Spring Washer	2	70357	70358		70359						
25	Socket Bolt	2	70360	70361		70362						

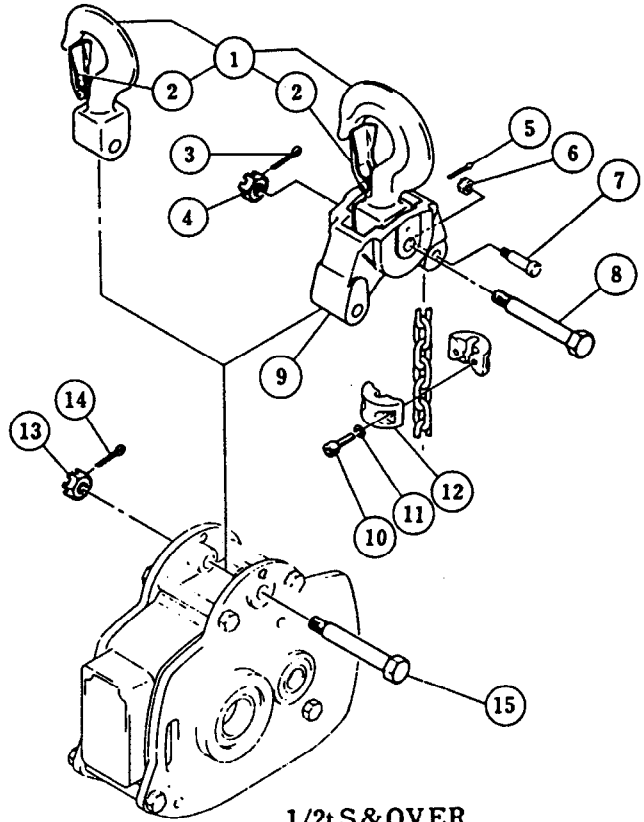
** Specify Model and Lift when ordering. Some special models or those with long lifts will require steel chain buckets.

NOTE: Steel chain buckets not listed; contact Ingersoll-Rand Distributor for assistance.

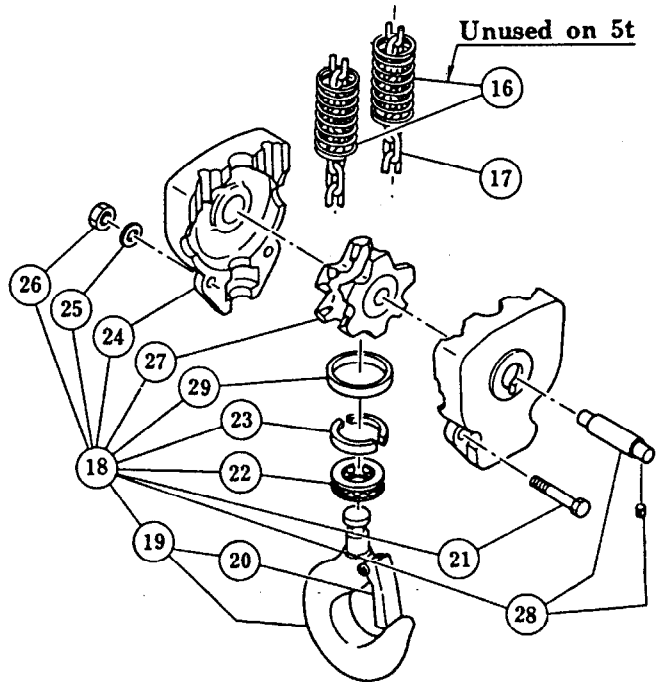
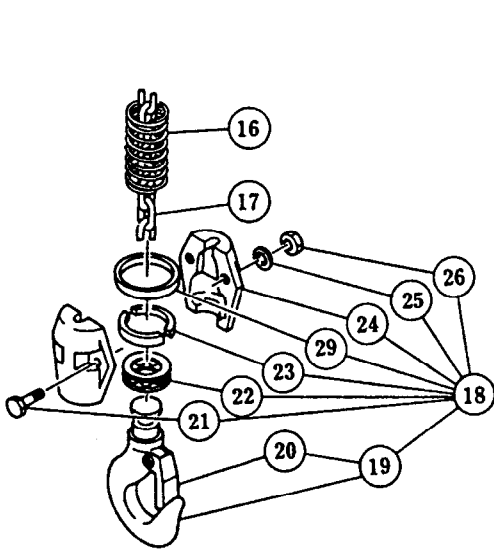
HOOK PARTS DRAWING



1/4t & 1/2tL



1/2t S & OVER



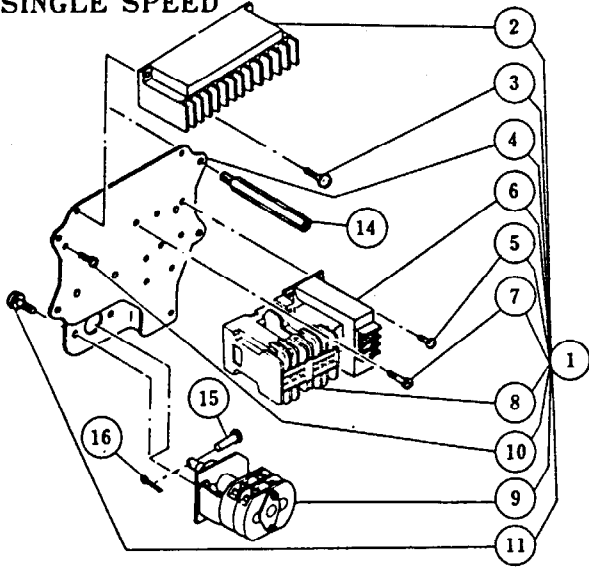
Unused on 5t

HOOK PARTS LIST

ITEM NO.	DESCRIPTION OF PART	QTY TOTAL	PART NUMBER										
			LE1		LE2		LE3		LE4			LE5	
			1/4	1/2-L	1/2-S	1-L	1-S	2-L	1-1/2	3	2-S	2-1/2	5
1	Top Hook Assembly	1	70316		70363		70364		70365	70364	70365	70366	
2	Hook Latch Assembly	1	70367		70368		70369		70370	70369	70370	70371	
3	Split Pin	1	---	70372	---	70372	---	70373	---	70373	---	70374	
4	Slotted Nut	1	---	70375	---	70375	---	70376	---	70376	---	70377	
5	Split Pin	1	---	70378	---	70378	---	70379	---	70379	---	70380	
6	Slotted Nut	1	---	70381	---	70381	---	70382	---	70383	---	70384	
7	Chain Pin	1	---	70385	---	70386	---	70387	---	70388	---	70389	
8	Top Pin L	1	---	70390	---	70390	---	70391	---	70391	---	70392	
9	Connection Yoke	1	---	70393	---	70394	---	70395	---	70396	---	70397	
10	Socket Bolt	2	---	70360	---	70361	---	70361	---	70362	---	---	
11	Spring Washer	2	---	70357	---	70358	---	70358	---	70359	---	---	
12	Stopper	2	---	70353	---	70354	---	70354	---	70355	---	---	
13	Slotted Nut	1	70398						70399				
14	Split Pin	1	70400						70401				
15	Top Pin	1	70402		70403		70404		70405				
16	Chain Spring	S	1	70343	---	70344	---	70345	---	70346	---	70346	70347
			2	---	70343	---	70344	---	70345	---	70346	---	---
		D	1	70348	---	70349	---	70350	---	70351	---	70351	70352
			2	---	70348	---	70349	---	70350	---	70351	---	---
17	Load Chain	1	LCES003		LCES005		LCES010		LCES020			LCES025	
18	Bottom Hook Complete Set	1	70411	70412	70413	70414	70415	70416	70417	70418	70419	70420	70421
19	Bottom Hook Assembly		70422	70423		70424		70425	70426	70427	70425	70428	70429
20	Hook Latch Assembly	1	70430		70431		70432	70433	70434	70432		70435	
21	Bolt	2	70436	70440	70436	70441	70437	70441	70438	---	70438	70439	---
		3	---							70442	---	---	70443
22	Thrust Bearing	1	70444		70445		70446		70447	70446	70447	70448	
23	Hook Stopper	2	70449		70450		70451		70452	70451	70452	70453	
24	Bottom Yoke	2	70454	70455	70456	70457	70458	70459	70460	70461	70462	70463	70464
25	Spring Washer	2	70465		70466		70467		---	70467	70468	---	
		3	---							70467	---	---	70468
26	Nut	2	70469		70470		70471		---	70471	70472	---	
		3	---							70471	---	---	70472
27	Idle Sheave Assembly	1	---	70473	---	70474	---	70475	---	70476	---	70477	
28	Bottom Shaft Assembly	1	---	70478	---	70479	---	70480	---	70481	---	70482	
29	Thrust Collar	1	70483		70484		70485		70486	70485	70486	70487	

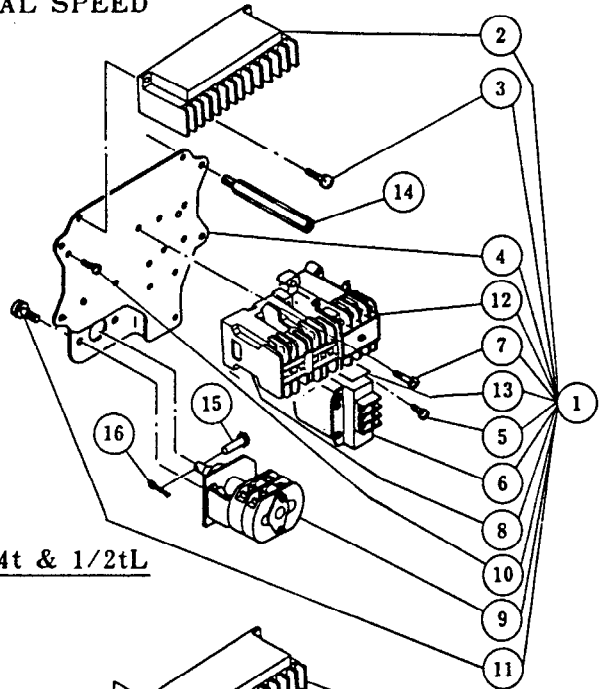
ELECTRICAL PARTS DRAWING

SINGLE SPEED

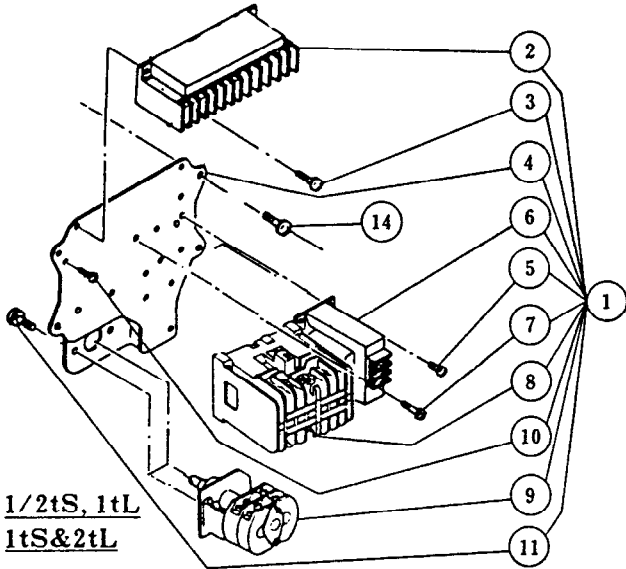


1/4 & 1/2tL

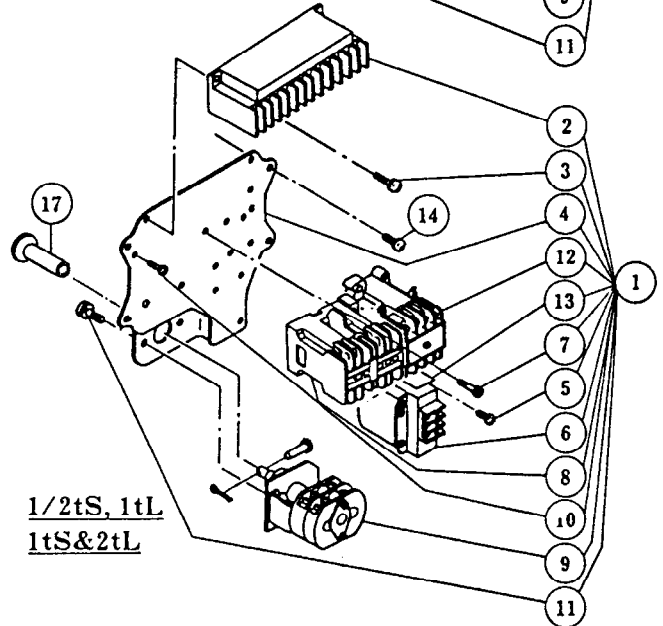
DUAL SPEED



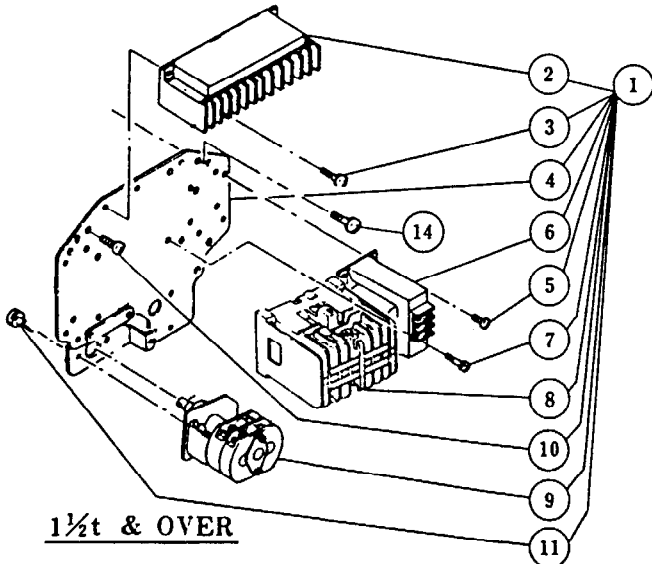
1/4t & 1/2tL



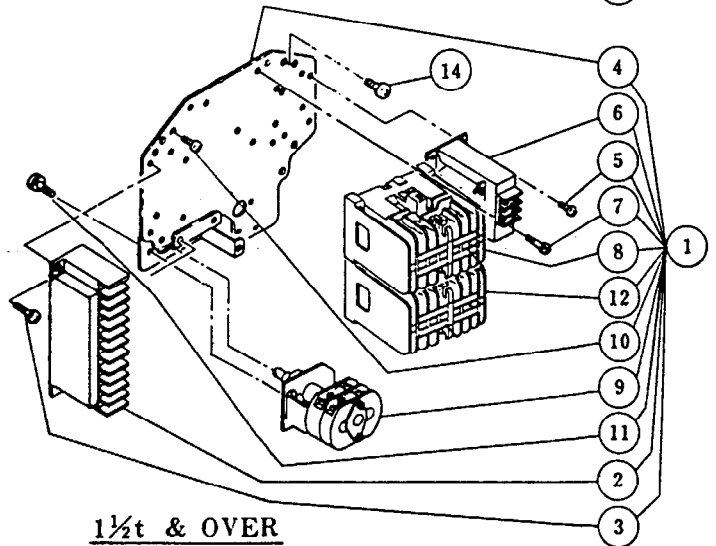
1/2tS, 1tL
1tS&2tL



1/2tS, 1tL
1tS&2tL



1 1/2t & OVER

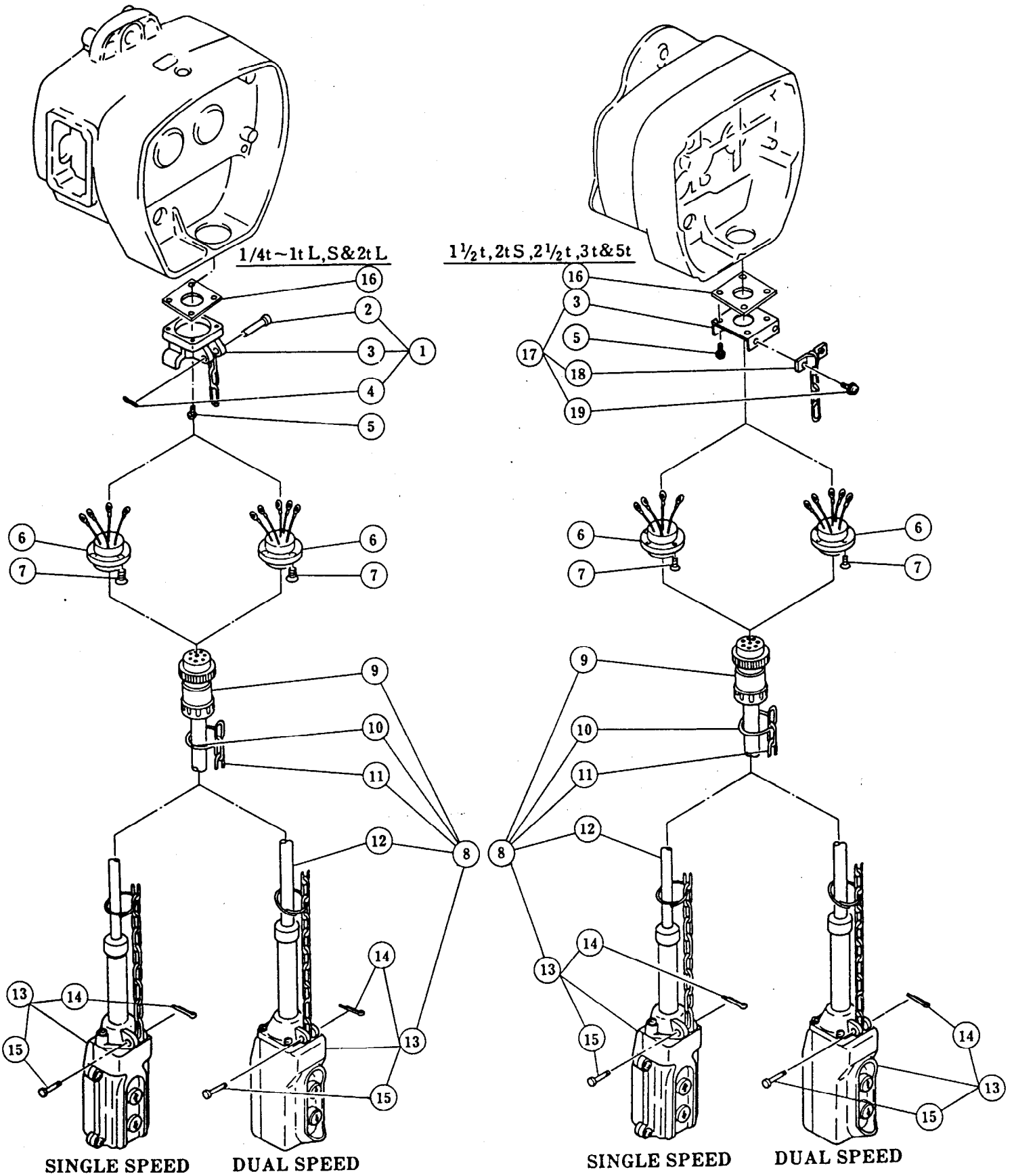


1 1/2t & OVER

ELECTRICAL PARTS LIST

ITEM NO.	DESCRIPTION OF PART	QTY TOTAL		PART NUMBER										
				LE1		LE2		LE3		LE4			LE5	
				1/4	1/2-L	1/2-S	1-L	1-S	2-L	1-1/2	3	2-S	2-1/2	5
1	Plate Complete Set	S	1	70488		70489		70490		70491				
		D		70492		70493		70494		70495				
2	Non-Reverse Relay	S	1	70497										
		D												
3	Machine Screw w/ Spring Washer		2	70500										
4	Plate Assembly	S	1	70501		70502		70503		70507				
		D		70504		70505		70506		70508				
5	Machine Screw w/ Spring Washer	S	4	70509						70509				
		D	3							---				
			4							70510				
6	Transformer	S	1	70511				70512						
		D		70513			70514		70515					
7	Machine Screw w/ Spring Washer	S	2	70516						---				
			3	---						70516				
		D	2	70516						---				
			6	70517						---				
8	Electromagnetic Contactor	S	1	70518						70519				
		D								70520				
9	Limit Switch Complete Set		1	70569			70524							
10	Machine Screw w/ Spring Washer		1	70525						70526				
11	Machine Screw		2	70527										
12	Electromagnetic Contactor		1	70528			70529		70530					
13	Insulating Paper		1	70531										
14	Stay Bolt / Machine Screw w / Washer		4	70532		70533								
15	Coupling Pin		1	70313		---								
16	Split Pin		1	70315		---								
17	Dust Guard		1	---		70534			---					
19	Relay with Module (not shown on drawing)	S	1	70547										
		D		70548										

CONTROL STATION PARTS 220/440V, 220V, 440V-60Hz & OTHER VOLTS DWG

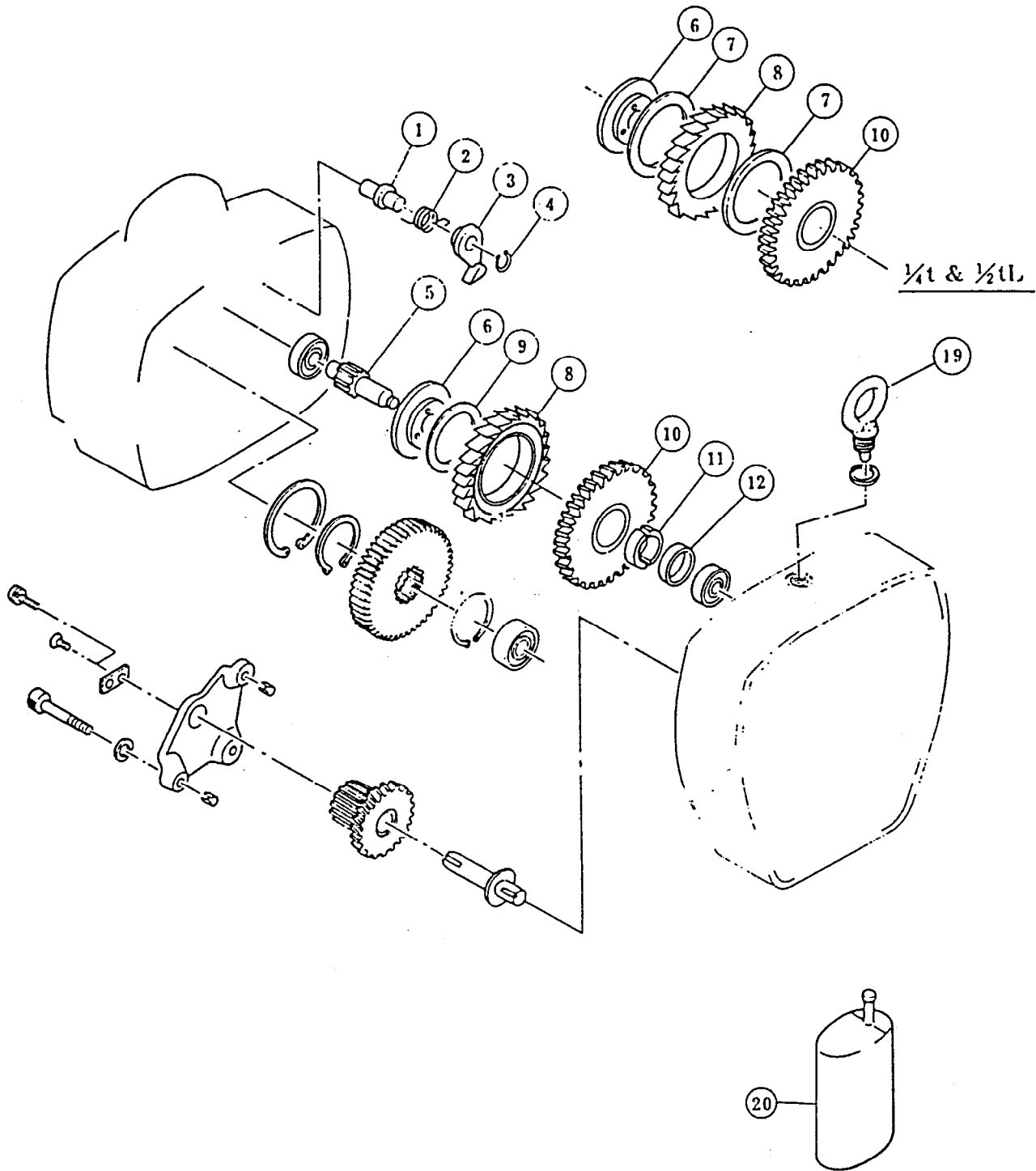


CONTROL STATION PARTS LIST

ITEM NO.	DESCRIPTION OF PART	QTY TOTAL		PART NUMBER										
				LE1		LE2		LE3		LE4			LE5	
				1/4	1/2-L	1/2-S	1-L	1-S	2-L	1-1/2	3	2-S	2-1/2	5
1	Socket Holder B Assembly	1		70535					---					
2	Cord Chain Pin	1		70536					---					
3	Socket Holder B	1		70537					71560					
4	Split Pin	1		70538					---					
5	Machine Screw (includes Spring Washer)	4		70539					70540					
6	Socket 5P with 4 Leads	S	1	70541					70542					
	Socket 5P with 5 Leads	D		70543					70544					
7	Screw	4		70545					70546					
* 8	2 Pushbutton Cord Complete Set with Strain Relief	S	1	2PBXX										
		D		2PBXXD										
	4 Pushbutton Cord Complete Set with Strain Relief	S		4PBXX										
		D		4PBXXD										
	6 Pushbutton Cord Complete Set with Strain Relief	S		6PBXX										
		D		6PBXXD										
9	Plug 5P	1		70549										
10	Cord Ring	5		50040										
11	Cord Chain	1		50041										
12	Pushbutton Cord 3C	S	1	73216										
	Pushbutton Cord 4C	D		7103212										
	Pushbutton Cord 5C	S		73299										
	Pushbutton Cord 7C	D		71032338										
13	2 Pushbutton Switch Assembly	S	1	70555										
		D		70556										
	2 Pushbutton Switch Assembly with On/Off **	S		71033781										
		D		71057023										
	4 Pushbutton Switch Assembly	S		70552										
		D		70789										
	4 Pushbutton Switch Assembly with On/Off **	S		51211										
		D		71051031										
	6 Pushbutton Switch Assembly	S		71509										
		D		---										
6 Pushbutton Switch Assembly with On/Off **	S	52758												
	D	71051049												
14	Split Pin	1		70557										
15	Cord Chain Pin	1		70558										
16	Socket Holder Packing B	1		70559					70560					
17	Socket Holder Assembly B	1		---					70561					
18	Cord Chain Stopper	1		---					70562					
19	Machine Screw (includes Spring Washer)	2		---					70563					

- * Replace "XX" in part number with required cord length. Example: for a 15 foot cord to be used on a 2 Pushbutton, single speed unit order part number 2PB15. For a 15 foot cord to be used on dual speed units order part number 2PB15D.
- ** Total buttons for Pushbutton Switch Assemblies are as follows: 2 Button Switch = 3 total buttons; 4 Button Switch = 5 total buttons; 6 Button Switch = 7 total buttons.

MECHANICAL BRAKE PARTS DRAWING (OPTIONAL)



MECHANICAL BRAKE PARTS LIST

ITEM NO.	DESCRIPTION OF PART	QTY TOTAL		PART NUMBER										
				LE1		LE2		LE3		LE4			LE5	
				1/4	1/2-L	1/2-S	1-L	1-S	2-L	1-1/2	3	2-S	2-1/2	5
1	Pawl Pin	1		70582				70583						
2	Pawl Spring	1		70584				70585						
3	Pawl	1		70586				70587						
4	Snap Ring	1		70588				70589						
5	Gear #3	S	1	70590		70591	71503		71595		70594	70595		
		D		70596										
6	Friction Disc	1		70597		70598		70599		70600				
7	Friction Plate	2		70601										
8	Ratchet Disc Assembly	1		70602		70603		70604		70605				
9	Bushing	1		---		70606		70607		70608				
10	Gear #2	S	1	70609		70610		70611		70612				
		D				70613		70614		70615				
11	Thrust Disc	2		70616		70617		70618		70619				
12	Thrust Collar	1		70620		70621		70622		70623				
19	Eye Bolt Assembly	1		---		70633								
20	Gear Oil	*		LE-Gear oil										

* Quantity for L1E, L2E and L3E = 1; quantity for L4E and L5E = 2.

ACCESSORIES

DESCRIPTION OF ACCESSORY	ACCESSORY PART NUMBER
Orange Touch-up Paint	MHD-OR
Chain Lubricant	LUBRI-Link

PARTS ORDERING INFORMATION

The use of replacement parts other than **Ingersoll-Rand** Material Handling replacement parts may result in decreased hoist performance and may invalidate the Company's warranty. For prompt service and genuine **Ingersoll-Rand** Material Handling parts, provide your nearest Distributor with the following:

1. Complete model number and serial number as it appears on the nameplate.
2. Voltage
3. Single or dual speed hoist.
4. Part number(s) and part description as shown in this manual.
5. Quantity required.

For your convenience and future reference it is recommended that the following information be recorded.

Hoist Model Number _____

Hoist Serial Number _____

Date Purchased _____

Return Goods Policy

Ingersoll-Rand will not accept any returned goods for warranty or service work unless prior arrangements have been made and written authorization has been provided from the location where the goods were purchased. Hoists returned with opened, bent or twisted hooks, or without chain and hooks, will not be repaired or replaced under warranty.

NOTICE

• **Continuing improvement and advancement of design may cause changes to this hoist which are not included in this manual. Manuals are periodically revised to incorporate changes. Always check the manual edition number on the front cover for the latest issue.**

Disposal

When the life of the hoist has expired, it is recommended that the hoist be disassembled, degreased and parts separated as to materials so that they may be recycled.

For additional information contact:

Ingersoll-Rand Material Handling

P.O. Box 24046
2724 Sixth Avenue South
Seattle, WA 98124-0046 USA
Phone: (206) 624-0466
Fax: (206) 624-6265

or

Ingersoll-Rand Material Handling

Douai Operations

111, avenue Roger Salengro
59450 Sin Le Noble, France
Phone: (33) 27-93-08-08
Fax: (33) 27-93-08-00

HOIST AND WINCH LIMITED WARRANTY

Ingersoll-Rand Company (I-R) warrants to the original user its Hoists and Winches (Products) to be free of defects in material and workmanship for a period of one year from the date of purchase. **I-R** will repair, without cost, any Product found to be defective, including parts and labor charges, or at its option, will replace such Products or refund the purchase price less a reasonable allowance for depreciation, in exchange for the Product. Repairs or replacements are warranted for the remainder of the original warranty period.

If any Product proves defective within its original one year warranty period, it should be returned to any Authorized Hoist and Winch Service Distributor, transportation prepaid with proof of purchase or warranty card.

This warranty does not apply to Products which **I-R** has determined to have been misused or abused, improperly maintained by the user, or where the malfunction or defect can be attributed to the use of non-genuine **I-R** parts.

I-R makes no other warranty, and all implied warranties including any warranty of merchantability or fitness for a particular purpose are limited to the duration of the expressed warranty period as set forth above. I-R's maximum liability is limited to the purchase price of the Product and in no event shall I-R be liable for any consequential, indirect, incidental, or special damages of any nature rising from the sale or use of the Product, whether based on contract, tort, or otherwise.

Note: Some states do not allow limitations on incidental or consequential damages or how long an implied warranty lasts so that the above limitations may not apply to you.

This warranty gives you specific legal rights and you may also have other rights which may vary from state to state.

IMPORTANT NOTICE

It is our policy to promote safe delivery of all orders.

This shipment has been thoroughly checked, packed and inspected before leaving our plant and receipt for it in good condition has been received from the carrier. Any loss or damage which occurs to this shipment while enroute is not due to any action or conduct of the manufacturer.

Visible Loss or Damage

If any of the goods called for on the bill of lading or express receipt are damaged or the quantity is short, do not accept them until the freight or express agent makes an appropriate notation on your freight bill or express receipt.

Concealed Loss or Damage

When a shipment has been delivered to you in apparent good condition, but upon opening the

crate or container, loss or damage has taken place while in transit, notify the carrier's agent immediately.

Damage Claims

You must file claims for damage with the carrier. It is the transportation company's responsibility to reimburse you for repair or replacement of goods damaged in shipment. Claims for loss or damage in shipment must not be deducted from the **Ingersoll-Rand** invoice, nor should payment of **Ingersoll-Rand** invoice be withheld awaiting adjustment of such claims as the carrier guarantees safe delivery.

You may return products damaged in shipment to us for repair, which services will be for your account and form your basis for claim against the carrier.

United States Office Locations

For Order Entry and Order Status

**Ingersoll-Rand
Distribution Center**
P.O. Box 618
510 Hester Drive
White House, TN 37188
Phone: (615) 672-0321
Fax: (615) 672-0801

For Technical Support

**Ingersoll-Rand
Material Handling**
P.O. Box 24046
2724 Sixth Avenue South
Seattle, WA 98124-0046
Phone: (206) 624-0466
Fax: (206) 624-6265

Regional Sales Offices

Chicago, IL
888 Industrial Drive
Elmhurst, IL 60126
Phone: (708) 530-3800
Fax: (708) 530-3891

Detroit, MI
23192 Commerce Drive
Farmington Hills, MI 48335
Phone: (810) 476-6677
Fax: (810) 476-6670

Houston, TX
Suite 150
2500 East T.C. Jester
Houston, TX 77008
Phone: (713) 864-3700
Fax: (713) 864-2244

Los Angeles, CA
11909 E. Telegraph Road
Santa Fe Springs, CA 90670
Phone: (310) 948-4189
Fax: (310) 948-1828

Philadelphia, PA
P.O. Box 425
900 E. 8th Ave., Suite 103
King of Prussia, PA 19406
Phone: (610) 337-5930
Fax: (610) 337-5912

International Office Locations

Offices and distributors in principal cities throughout the world. Contact the nearest **Ingersoll-Rand** office for the name and address of the distributor in your country or write/fax to:

**Ingersoll-Rand
Material Handling**
P.O. Box 24046
2724 Sixth Avenue South
Seattle, WA 98124-0046
USA
Phone: (206) 624-0466
Fax: (206) 624-6265

**Canada
National Sales Office
Regional Warehouse
Toronto, Ontario**
51 Worcester Road
Rexdale, Ontario
M9W 4K2
Phone: (416) 675-5611
Fax: (416) 213-4510
Order Desk
Fax: (416) 213-4506

Regional Sales Offices

Calgary, Alberta
44 Harley Road S.E.
Calgary, Alberta
T2V 3K3
Phone: (403) 252-4180
Fax: (403) 252-4462

Edmonton, Alberta
1430 Weber Center
5555 Calgary Trail N.W.
Edmonton, Alberta
T6H 5G8
Phone: (403) 438-5039
Fax: (403) 437-3145

Montreal, Quebec
3501 St. Charles Blvd.
Kirkland, Quebec
H9H 4S3
Phone: (514) 695-9040
Fax: (514) 695-0963

British Columbia
201-6351 Westminster Hwy
Richmond, B. C.
V7C 5C7
Phone: (604) 278-0459
Fax: (604) 278-1254

**Latin America Operations
Ingersoll-Rand
Production Equipment
Group**
730 N.W. 107 Avenue
Suite 300, Miami, FL, USA
33172-3107
Phone: (305) 559-0500
Fax: (305) 559-7505

Europe, Middle East and Africa

**Ingersoll-Rand
Material Handling
Douai Operations**
111, avenue Roger Salengro
59450 Sin Le Noble, France
Phone: (33) 27-93-08-08
Fax: (33) 27-93-08-00

**Asia Pacific Operations
Ingersoll-Rand (Japan) Ltd.**
Shin-Yokohama Square Bldg.
(5th Floor)
2-3-12 Shin-Yokohama,
Kouhoku-ku
Yokoham-shi, Kanagawa
Pref. 222 Japan
Phone: 81-45-476-7800
Fax: 81-45-476-7806

**Russia
Ingersoll-Rand Company**
World Trade Center
Office 1101
Krasnopresnenskaya Nab. 12
Moscow, Russia 123610