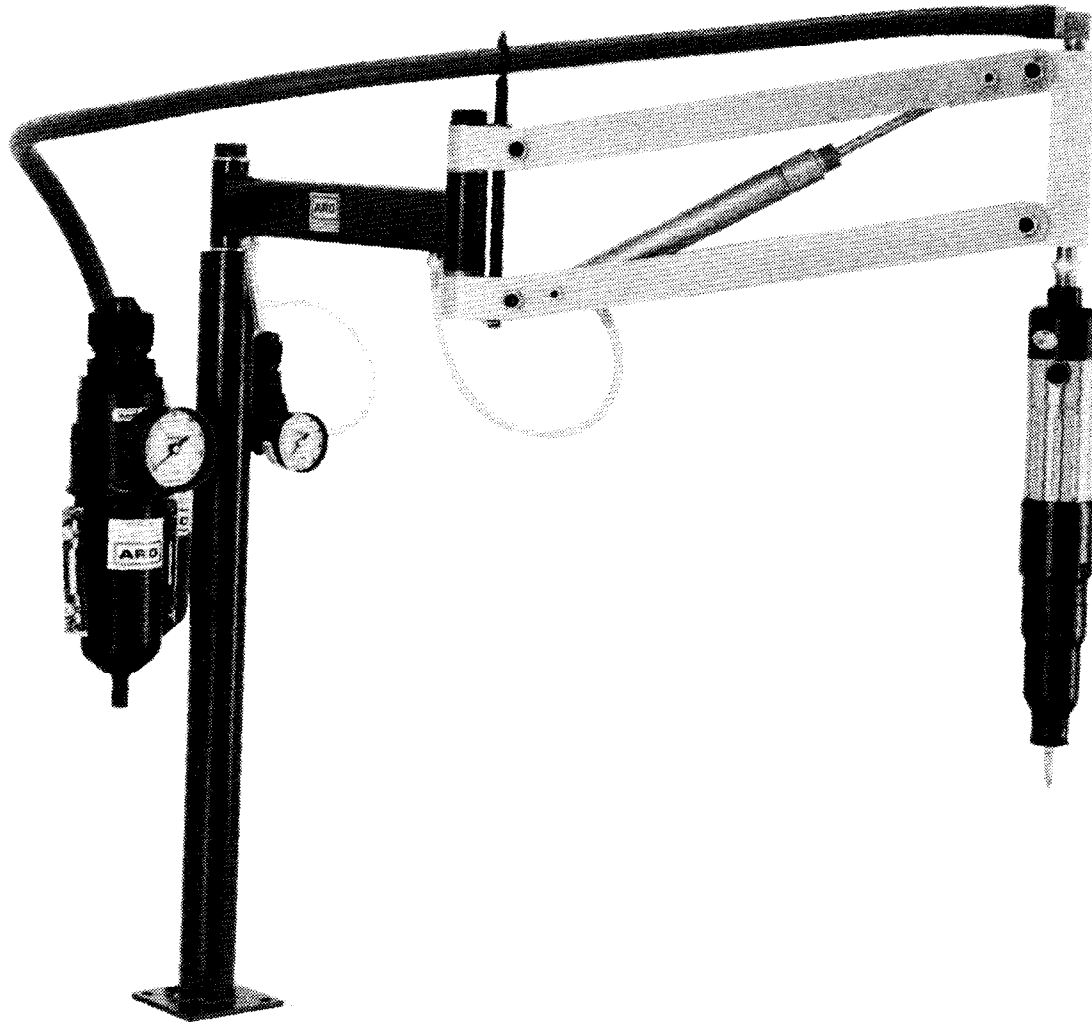


OPERATOR'S MANUAL

PARALLEL ARM WORKSTATION

Released: 7-2-90
Revised: 11-15-91
Form: 3626-2

Models: WB2()A-100, WW2()A-100,
WB2()A-300 and WW2()A-300.



READ WARNINGS ON PAGE 4 BEFORE ATTACHING AIR LINE TO WORKSTATION.

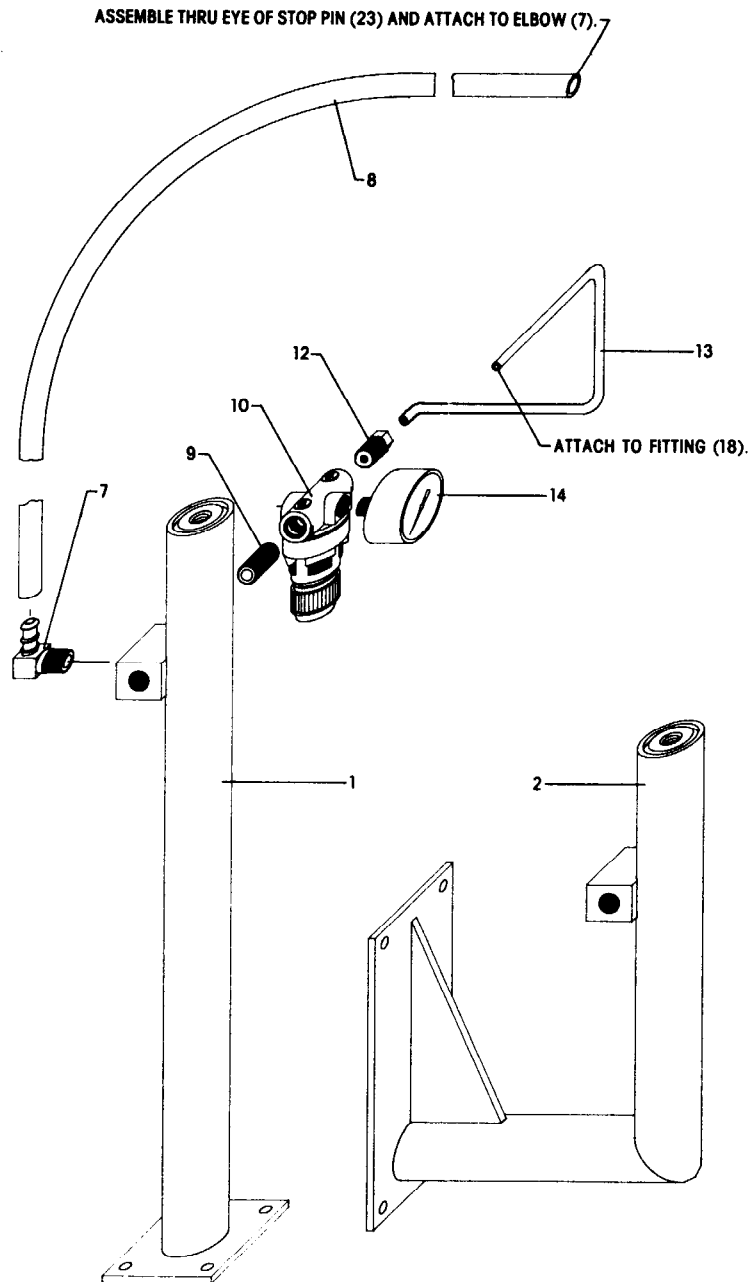
(SCREWDRIVER NOT INCLUDED)

THE ARO CORPORATION • ONE ARO CENTER • BRYAN, OHIO 43506-0151
PH: (419) 636-4242 • FAX (419) 636-2115
©1991 THE ARO CORPORATION • PRINTED IN U.S.A.



Part of worldwide Ingersoll-Rand

MODELS WB2()()A-100 AND WW2()()A-100 (BASIC MODEL)

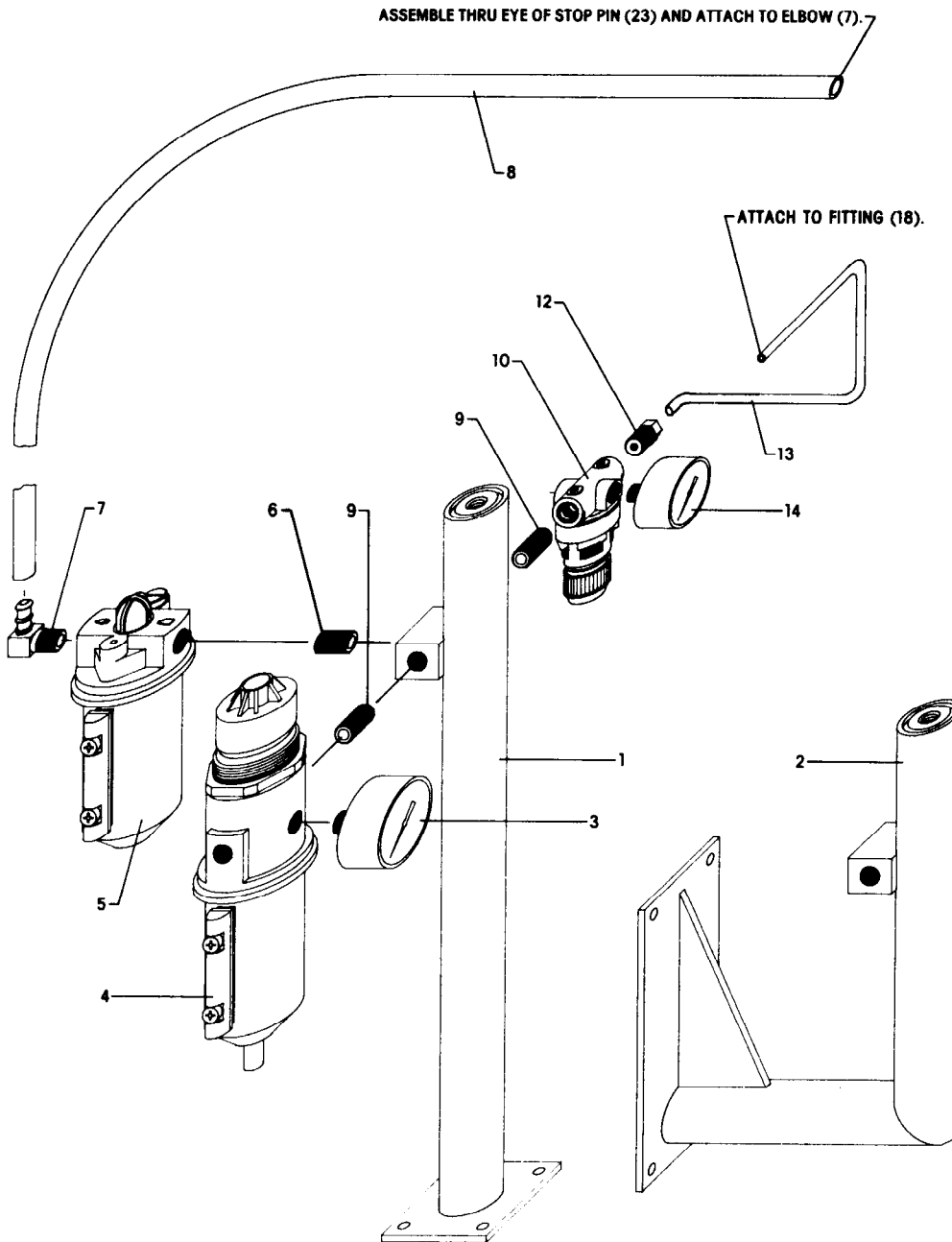


WORKSTATION ASSEMBLY INSTRUCTIONS

NOTE: All pipe thread connections should have tape or sealant applied (not furnished).

1. Bolt or clamp post assembly (1 or 2) to a bench top (or wall for wall mount models) with ported manifold block oriented away from the tool operator.
2. Thread gauge (14) into front port of regulator (10) and tighten. Thread pipe plug (not shown) into rear port and tighten.
3. Assemble 1/4" pipe nipple (9) and regulator (10) to the inlet port on the right side of the manifold block.
4. Assemble 90° elbow (7) to outlet port on the back of the manifold block and tighten.

MODELS WB2()()A-300 AND WW2()()A-300 (BASIC MODEL W/F.R.L.)



WORKSTATION ASSEMBLY INSTRUCTIONS

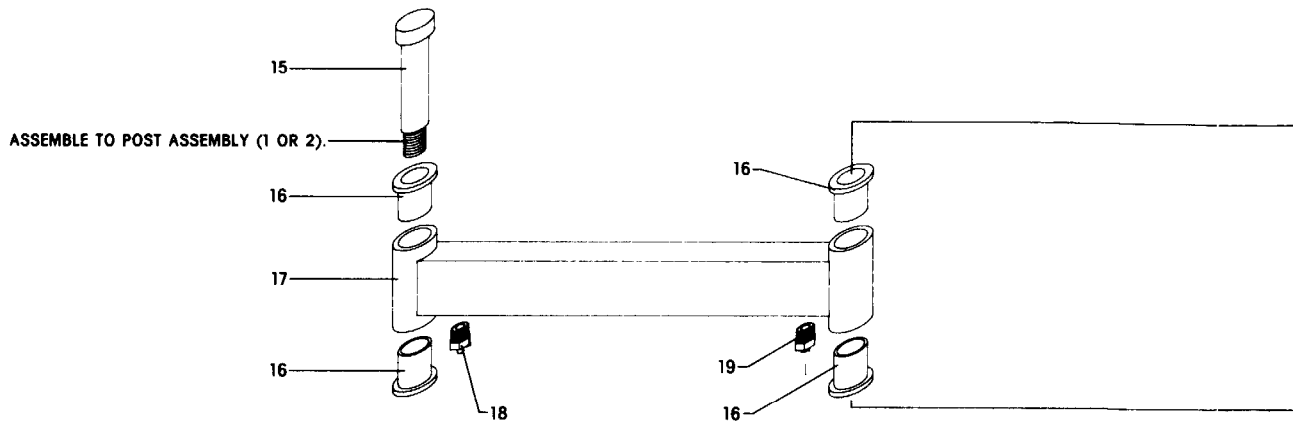
NOTE: All pipe thread connections should have tape or sealant applied (not furnished).

1. Bolt or clamp post assembly (1 or 2) to a bench top (or wall for wall mount models) with ported manifold block oriented away from the tool operator.
2. Thread gauge (14) into front port of regulator (10) and tighten. Thread pipe plug (not shown) into rear port and tighten.
3. Assemble 1/4" pipe nipple (9) and regulator (10) to the inlet port on the right side of the manifold block.
4. Assemble 1/4" pipe nipple (6) and lubricator (5) to the inlet port on the back side of the manifold block and tighten. Assemble 90° elbow (7) into outlet port of lubricator (5) and tighten. Fill lubricator (see instructions included with lubricator).
5. Assemble 1/4" pipe nipple (9) and filter-regulator (4) to the inlet port on the left side of the manifold block and tighten. NOTE: It may be necessary to loosen the filter bowl to orient site gauges to clear the post when tightening.

WARNING: WHEN ATTACHING AIR LINE TO WORKSTATION, THE ARM COULD RAISE QUICKLY, CAUSING INJURY.

CAUTION: BE SURE TOOL IS ASSEMBLED TO WORKSTATION BEFORE AIR LINE IS ATTACHED.

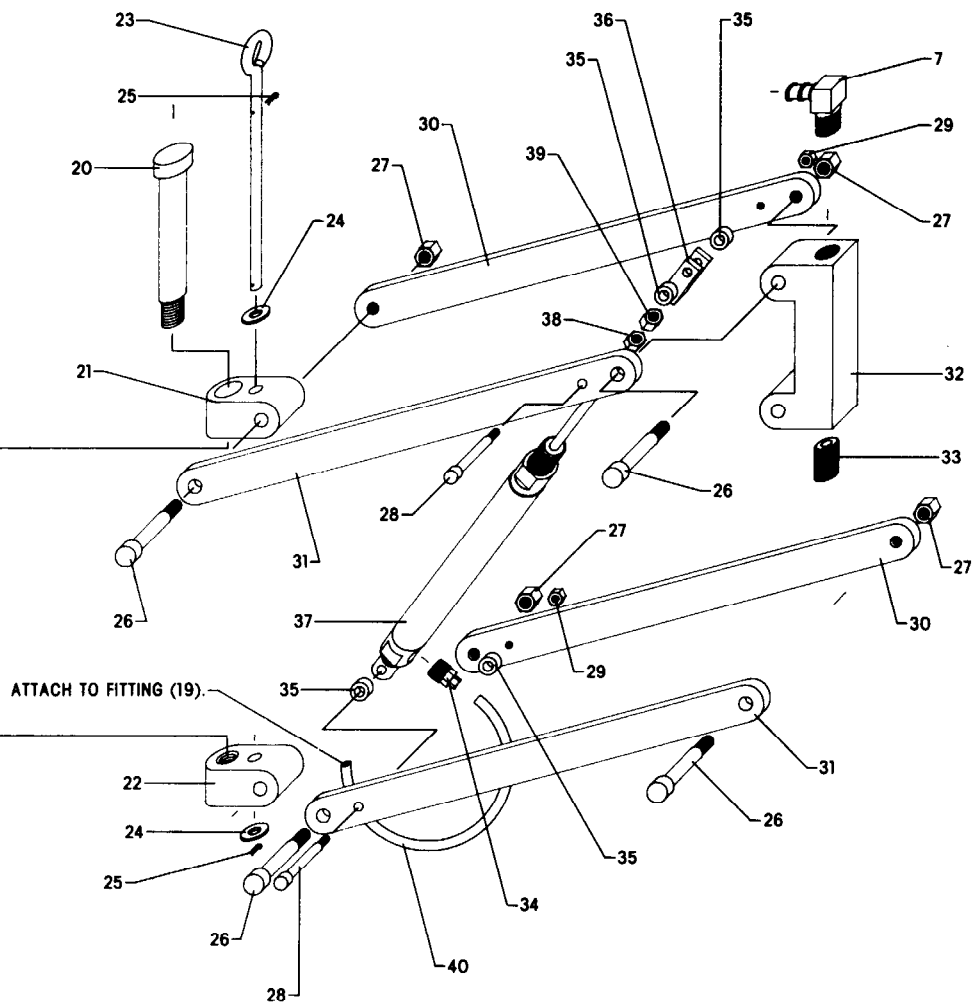
NOTE: IF REPLACEMENT OF BUSHINGS (16) BECOMES NECESSARY, PRESS NEW BUSHINGS INTO ARM ASSEMBLY, THEN CAREFULLY HAND REAM I.D. TO $.625 \pm .001$ ".



PART NUMBER FOR ORDERING

PART NUMBER FOR ORDERING

1	Post Assembly used on 24" models	48751-2	20	Bolt	48744-3
	used on 30" models	48751-3	21	Bracket	48741-1
2	Post Assembly	48755-1	22	Bracket	48742-1
3	Gauge	29851	23	Stop Pin	48746-1
4	Filter-Regulator	129221-000	24	Washer (2 req'd)	48745-1
5	Lubricator	126221-000	25	Hair Pin (2 req'd)	48708-1
6	Pipe Nipple	48767-1	26	Bolt (4 req'd)	48760-1
7	Elbow (2 req'd)	48764-1	27	Lock Nut (4 req'd)	48762-1
8	Tubing used on 24" models	48769-2	28	Bolt (2 req'd)	48759-1
	used on 30" models	48769-3	29	Lock Nut (2 req'd)	48724-1
9	Pipe Nipple (1 or 2 req'd)	Y27-52-C	30	Left Side Link Arm (2 req'd) used on 24" models	48756-2
10	Regulator	127122-000		used on 30" models	48756-3
12	Fitting	48761-1	31	Right Side Link Arm (2 req'd) used on 24" models	48757-2
13	Tubing	48766-2		used on 30" models	48757-3
14	Gauge	29850	32	Bracket	48758-1
15	Bolt	48744-2	33	Pipe Nipple	48767-1
16	Bushing (4 req'd)	48743-1	34	Fitting	48765-1
17	Arm Assembly used on 24" models	48740-2	35	Spacer (4 req'd)	48768-1
	used on 30" models	48740-3	36	Rod Clevis	117040
18	Fitting	48765-1	37	Cylinder (includes item 38)	0176-1019-040
19	Fitting	48765-1	38	Nut	Y11-4-C
	Arm Assembly (includes items 15 thru 19) used on 24" models	48747-2	39	Jam Nut	Y11-104-C
	used on 30" models	48747-3		Arm Assembly (includes items 20 thru 39) used on 24" models	48763-2
				used on 30" models	48763-3
			40	Tubing	48766-2



WORKSTATION ASSEMBLY INSTRUCTIONS

6. Fasten swing arm assembly (shown on page 4) on top of post assembly (1 or 2) using bolt (15). NOTE: Lubricate bolt before assembly to extend life of bushings (16).
7. Connect tubing (13) from regulator (10) to fitting (18) on swing arm assembly.
8. Remove bolt (20)(5/16" hex) from parallel arm assembly (shown on page 5) and position assembly at the end of swing arm. Replace bolt (20), securing parallel arm assembly. NOTE: Lubricate bolt before assembly to extend life of bushings (16).
9. Attach tubing (40) from fitting (19) on swing arm to fitting (34) on cylinder (between parallel arms).
10. Put 3/8" tubing (8) thru stop pin (23) on top of parallel arm assembly. Push ends of tubing on to 90° elbows (7) located at the end of parallel arm assembly and at post connection (see pages 2 and 3). NOTE: Disassembly of tubing (8) requires cutting off tubing and will effect freedom of arm movement.
11. Attach desired air tool to the outlet port on end of parallel arm assembly using 1/4" pipe nipple (33) and tighten.
12. Connect air supply to inlet port on filter-regulator (4). A quick disconnect coupler system is recommended for safety.

It is recommended that the parts lists for the filter-regulator and lubricator units be saved in a plastic bag for future service parts reference.







Part of worldwide Ingersoll-Rand