

**PARTS LIST  
For  
“Jackhamer”  
Model: JH40**

**INGERSOLL-RAND®**

Designed and Built by Ingersoll-Rand Company  
Roanoke, Va. 24019-5198 U.S.A.



**Certified ISO-9001 (ANSI/ASQC Q91)  
Certification No. QSR-80**

Refer All Communications To The Nearest Address Listed On The Back Cover.



## Warranty

Ingersoll-Rand, through its distributor, warrants that each item of equipment manufactured by it and delivered hereunder to the initial user to be free of defects in material and workmanship for a period of three (3) months from initial operation or six (6) months from the date of shipment to the initial user, whichever first occurs.

With respect to the following types of equipment, the warranty period enumerated will apply in lieu of the foregoing warranty period.

- A. Aftercoolers, Drill Mountings and Klemm Rotary Heads – The earlier of six (6) months from initial operation or nine (9) months from date of shipment to the initial user.
- B. Portable Compressors, Portable Generator Sets (GENSET), Portable Light Towers and Abrasive Blasting Equipment. The earlier of twelve (12) months from shipment to, or the accumulation of 2,000 hours of service by, the initial user.
- C. All Compressor Air Ends, GENSET Generators and Paving Breakers – The earlier of twenty-four (24) months from shipment to, or the accumulation of 4,000 hours of service by, the initial user. For Air Ends, the warranty against defects will include replacement of the complete Air End, provided the original Air End is returned assembled and unopened.
- D. Pavers, Milling Machines, Pedestrian Compactors (including baseplates, upright and walk behinds) and Rotary Drills – The earlier of (6) months from shipment to, or the accumulation of 1,000 hours of service by, the initial user.
- E. Jackhammers, Forklifts and Self-Propelled Compactors – The earlier of twelve (12) months from shipment to, or the accumulation of 1,000 hours of service by, the initial user.
- F. Downhole Drills – In lieu of the repair or replacement of defective parts Ingersoll-Rand may elect to

issue full or partial credit toward the purchase of a new part. The extent of credit issued will be determined by pro rating against the normal service life of the part in question.

- G. Spare Parts (excluding downhole drills) – Three (3) months from date of shipment.

Ingersoll-Rand will provide a new part or repaired part, at its election, in place of any part which is found upon its inspection to be defective in material and workmanship during the period prescribed above. Such part will be repaired or replaced without charge to the initial user during normal working hours at the place of business of an Ingersoll-Rand distributor authorized to sell the type equipment involved or other establishment authorized by Ingersoll-Rand. User must present proof of purchase and date at the time of exercising warranty.

This warranty does not apply to failures occurring as a result of abuse, misuse, negligent repairs, corrosion, erosion and normal wear and tear, alterations or modification made to the product without express written consent of Ingersoll-Rand; or failure to follow the recommended operating practices and maintenance procedures as provided in the product's operating and maintenance publications.

Accessories or equipment furnished by Ingersoll-Rand, but manufactured by others, including, but not limited to, engines, tires, batteries, engine electrical equipment, hydraulic transmissions, carriers, shall carry whatever warranty the manufacturers have conveyed to Ingersoll-Rand and which can be passed on to the initial user.

**THIS WARRANTY IS IN LIEU OF ALL OTHER WARRANTIES (EXCEPT OF TITLE), EXPRESSED OR IMPLIED, AND THERE ARE NO WARRANTIES OF MERCHANTABILITY OR OF FITNESS FOR A PARTICULAR PURPOSE.**

## Limitation of Liability

THE REMEDIES OF THE USER SET FORTH UNDER PROVISIONS OF WARRANTY OUTLINED ABOVE ARE EXCLUSIVE AND THE TOTAL LIABILITY OF INGERSOLL-RAND OR ITS DISTRIBUTORS WITH RESPECT TO THIS SALE OR THE EQUIPMENT AND SERVICE FURNISHED HEREUNDER, IN CONNECTION WITH THE PERFORMANCE OR BREACH THEREOF, OR FROM THE SALE, DELIVERY, INSTALLATION, REPAIR OR TECHNICAL DIRECTION COVERED BY OR FURNISHED UNDER THIS SALE. WHETHER BASED ON CONTRACT, WARRANTY, NEGLIGENCE, INDEMNITY, STRICT LIABILITY OR OTHERWISE SHALL NOT EXCEED THE PURCHASE PRICE OF THE UNIT OF EQUIPMENT UPON WHICH JCH LIABILITY IS BASED.

INGERSOLL-RAND, ITS SUPPLIER(S) AND ITS DISTRIBUTORS SHALL IN NO EVENT BE LIABLE TO THE USER, ANY SUCCESSORS IN INTEREST OR ANY BENE-

FICIARY OR ASSIGNEE RELATING TO THIS SALE FOR ANY CONSEQUENTIAL, INCIDENTAL, INDIRECT, SPECIAL OR PUNITIVE DAMAGES ARISING OUT OF THIS SALE OR ANY BREACH THEREOF, OR ANY DEFECTS IN, OR FAILURE OF, OR MALFUNCTION OF THE EQUIPMENT UNDER THIS SALE WHETHER BASED UPON LOSS OF USE, LOST PROFITS OR REVENUE, INTEREST, LOST GOODWILL, WORK STOPPAGE, IMPAIRMENT OF OTHER GOODS, LOSS BY REASON OF SHUTDOWN OR NON-OPERATION, INCREASED EXPENSES OF OPERATION OF THE EQUIPMENT, COST OF PURCHASE OF REPLACEMENT POWER OR CLAIMS OF USERS OR CUSTOMERS OF THE USER FOR SERVICE INTERRUPTION WHETHER OR NOT SUCH LOSS OR DAMAGE IS BASED ON CONTRACT, WARRANTY, NEGLIGENCE, INDEMNITY, STRICT LIABILITY OR OTHERWISE.



---

**NOTE:** THE VERTICAL BAR SHOWN TO THE LEFT OF TEXT DESIGNATES A REVISION HAS BEEN MADE SINCE THE PREVIOUS PRINTING.

### ORDERING INSTRUCTIONS

When ordering service parts, please specify:

1. The **NAME** of each part as listed.
2. The **PART NUMBER** as listed or stamped on the part.
3. The **SERIAL NUMBER** of the equipment.

DO NOT use illustration numbers when ordering service parts. To save time, send all orders for parts to the nearest branch office or agent. IF IT IS NECESSARY TO SEND ANY PART OF THIS EQUIPMENT TO THE FACTORY, INQUIRE AT OUR NEAREST BRANCH OFFICE OR AGENT FOR SPECIAL INSTRUCTIONS.

### NOTICE

**SAVE THIS PARTS LIST. DO NOT DESTROY.**

*The use of repair parts other than those included within the Ingersoll-Rand<sup>®</sup> approved parts list may create hazardous conditions over which Ingersoll-Rand<sup>®</sup> Company has no control. Therefore Ingersoll-Rand<sup>®</sup> Company cannot be held responsible for equipment in which non-approved repair parts are installed.*

*All information, illustrations, and specifications in this manual are based on the latest information available at the time of publication. Product improvement is a continuing goal at Ingersoll-Rand<sup>®</sup>. Design and specifications are subject to change without notice or obligation.*

*When the life of the machine has expired, it is recommended that the machine be disassembled, degreased and parts be separated by material so that they can be recycled.*

---

Each column includes the Parts List  
Section Numbers applicable to the assembly.

---

**NAME OF ASSEMBLY**  
Components of an assembly  
are indented.

---

	<b>Manual No.</b>	<b>Section No.</b>
Introduction .....	PL6108	1
Jackhammer Model JH40 .....	PL6108	2
General Information .....	PL6108	3

---

Alphabetical Index

<u>Title</u>	<u>Page No.</u>
Introduction .....	1
Safety First .....	1
Safety Precautions .....	1

**1. INTRODUCTION.**

This parts list contains spare part numbers, general model information and important safety information for Jackhamer Model JH40 (hereafter referred to as jackhamer).

**2. SAFETY FIRST.**

**SAFETY FIRST** is the primary concern for the protection of both, personnel and the jackhamer during any phase of operation. All personnel must thoroughly understand all safety precautions before operating or doing any maintenance work on the jackhamer.

**3. SAFETY PRECAUTIONS.**

The Safety Precautions listed are intended to make all personnel aware of the hazards while working on or near a jackhamer. All personnel must use common sense and a good working practice while operating and maintaining the jackhamer. The safety precautions listed are of a general nature and cannot cover every possible situation:

a. Always wear approved hard hat, safety shoes, safety glasses, nose mask, and ear protection when near a jackhamer in operation. Failure to wear approved safety equipment could result in bodily injury.

b. Use only Ingersoll-Rand® replacement parts.

c. Prolonged exposure to excessive noise levels without the use of proper ear protection can result in permanent hearing loss.

d. Do not indulge in horseplay. Distractions can cause accidents.

e. Keep your hands off the throttle lever until it is time to start jackhamer operation.

f. Maintain a steady balance at all times.

g. Never put your face close to the jackhamer.

h. Never rest the jackhamer on your foot.

i. Never point the jackhamer at anyone.

j. Never start the jackhamer when it is lying on the ground.

k. Compressed air is dangerous. Never point an air hose at yourself or co-workers. Never blow your clothes free of dust with compressed air.

l. Never disconnect a pressurized air hose, before disconnecting a hose, shut-off the air at the compressor and bleed the jackhamer.

m. Do not operate the jackhamer without a drill steel locked in the fronthead. Hold the tool firmly against the work.

n. Always keep both hands on the handle while operating the jackhammer.

o. The operator must keep his legs and feet clear of the drill steel to prevent injury if the tool breaks. If a tool breaks, the jackhammer (with a piece of broken tool projecting from the fronthead) will suddenly drop to the ground.

p. Do not "ride" the jackhammer with one leg over the handle. The operator can be injured if the tool breaks while he is riding the jackhammer.

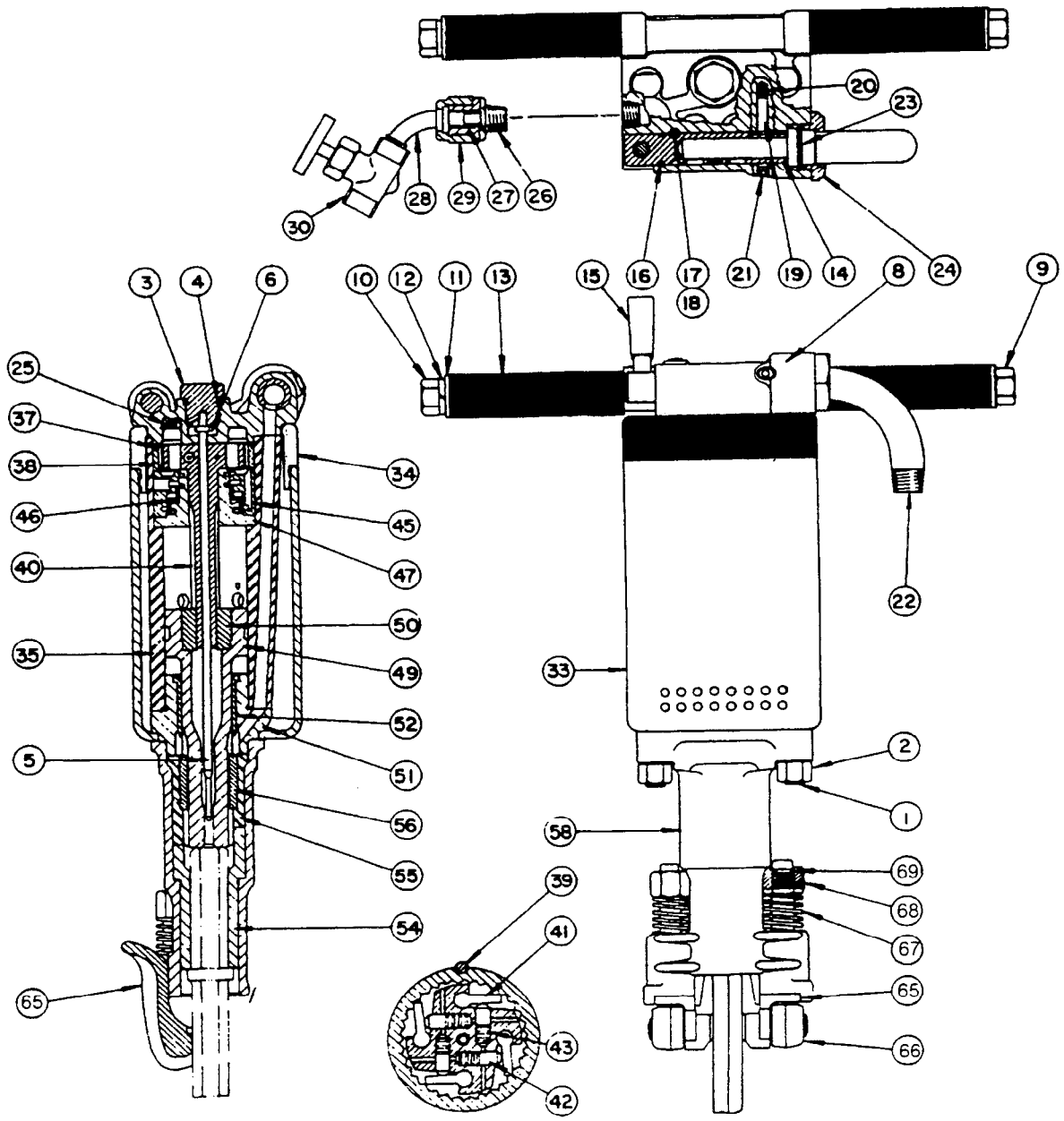
q. Know what is underneath the material you are about to drill. Be alert for any buried water, gas, sewer, telephone, or electric lines.

r. If you hit something, shut-off the jackhammer immediately and find out what it is. Use a shovel, not the jackhammer, to uncover the object carefully.

s. When using any solvent to clean parts, make sure that it meets current safety and health standards and that it is used in an area that is adequately ventilated.



July 31, 1996



BEAVERTAIL TYPE STEEL HOLDER  
Sectional Illustration

JACKHAMER Model JH40  
(For Parts List, refer to Page 2)



**JACKHAME**  
**(For Illustratio**

				DRY YOKE 1 X 4-1/4	DRY YOKE 7/8 X 3-1/4	DRY YOKE 7/8 X 4-1/4
REF NO	QTY	NAME OF PART	REMARKS	JH40- STD 50719905	JH40- OPT-A 50719913	JH40- OPT-B 50719921
1	2	ROD, ASSEMBLY		50003185	←	←
2	2	NUT, ASSEMBLY ROD		50003193	←	←
3	1	RETAINER, TUBE		50503606	←	←
4	1	"O" RING, TUBE RETAINER		95086526	←	←
5	1	TUBE		50763762	←	←
6	1	RUBBER, TUBE		50045673	←	←
8	1	HANDLE		50924380	←	←
9	1	STUD, HANDLE		50899467	←	←
10	2	NUT, HEX CAP	Should be removed when the JH40 is used with a Jackleg for Jackdrill applications	95216701	←	←
11	2	NUT, HEX CAP	Should be removed when the JH40 is used with a Jackleg for Jackdrill applications	51948016	←	←
12	1	LOCK WASHER, HANDLE BOLT	Should be removed when the JH40 is used with a Jackleg for Jackdrill applications	95210415	←	←
13	2	GRIP HANDLE	Should be removed when the JH40 is used with a Jackleg for Jackdrill applications	50899434	←	←
		ASSEMBLY, THROTTLE VALVE		50809748	←	←
14	1	. VALVE, THROTTLE		50809730	←	←
15	1	. LEVER, THROTTLE VALVE		51085637	←	←
16	1	"O" RING, THROTTLE VALVE		95018099	←	←
17	1	PIN, LOCATING		95957668	←	←
18	1	PLUG, HANDLE		95049359	←	←
19	1	PLUNGER, THROTTLE VALVE		50003748	←	←
20	1	SPRING, THROTTLE VALVE PLUNGER		50170927	←	←
21	1	PLUG, HANDLE		95049359	←	←
22	1	CONNECTION, HOSE		50974013	←	←
23	1	"O" RING		95086161	←	←
24	1	CAP, HOSE CONNECTION		50028117	←	←
25	1	PLUG, HANDLE				





**JACKHAMER**  
(For Illustration, re

				DRY YOKE 1 X 4-1/4	DRY YOKE 7/8 X 3-1/4	DRY YOKE 7/8 X 4-1/4	WE YOKE 1 X 4-
REF NO	QTY	NAME OF PART	REMARKS	JH40- STD 50719905	JH40- OPT-A 50719913	JH40- OPT-B 50719921	JH40- OPT 50719913
		COMPLETE, WATER HOSE CONNECTION					50971
26	1	. SPUD, WATER CONNECTION					50021
27	1	. RUBBER, WATER HOSE STEM					50021
28	1	. STEM, WATER CONNECTION					5001
29	1	. NUT WATER CONNECTION					5002
30	1	. WATER, VALVE					5002
33	1	MUFFLER		50997915	←	←	←
34	1	CAP, MUFFLER		50719871	←	←	←
35	1	CYLINDER		50719889	←	←	←
37	1	SEAL, ROTATION RATCHET		50719731	←	←	←
38	1	RATCHET, ROTATION		50719723	←	←	←
39	1	DOWEL PIN, ROTATION RATCHET		95385720	←	←	←
40	14	RIFLE, BAR		50003888	←	←	←
41	4	PAWL, ROTATION		50172386	←	←	←
42	4	PLUNGER, ROTATION PAWL		50172394	←	←	←
43	4	SPRING, ROTATION PAWL PLUNGER		50173269	←	←	←
45	1	VALVE, CHEST		50719830	←	←	←
46	1	VALVE		50006816	←	←	←
47	1	GUIDE, VALVE		50719822	←	←	←
49	1	PISTON		50965987	←	←	←
50	1	NUT, RIFLE		50004183	←	←	←
	1	PISTON STEM BEARING ASSEMBLY		50719772	←	←	←
51	1	.BEARING, PISTON STEM		50719806	←	←	←
52	1	SLEEVE, PISTON STEM BEARING		50719764	←	←	←
54	1	CHUCK		50014562	50014554	50014588	500
55	1	DRIVER, CHUCK		50003375	←	←	←
56	1	NUT CHUCK		50023126	←	←	←
58	1	FRONTHEAD		50719855	50720770	50719855	
59	2	BUSHING, FRONTHEAD					
60	1	HOLDER, STEEL		50899400	50899426	50899418	508
61	2	BOLT, STEEL HOLDER					
62	2	SPRING, STEEL HOLDER BOLT					
63	2	NUT, STEEL HOLDER BOLT					
64	2	RETAINER RING, STEEL HOLDER BOLT NUT					



				DRY YOKE 1 X 4-1/4	DRY YOKE 7/8 X 3-1/4	DRY YOKE 7/8 X 4-1/4
REF NO	QTY	NAME OF PART	REMARKS	JH40- STD 50719905	JH40- OPT-A 50719913	JH40- OPT-B 50719921
65	1	BOLT, STEEL HOLDER		50899392	←	←
66	1	NUT, STEEL HOLDER BOLT		95077301	←	←
67	1	PLUNGER, STEEL HOLDER		50550409	←	←
68	1	SPRING, STEEL HOLDER PLUNGER		50550391	←	←
69	1	PLUG		95002143	←	←



R Model JH40  
(, refer to Page 1)

WET YOKE X 4-1/4	DRY BEAVER- TAIL 7/8 X 4-1/4	WET BEAVER- TAIL 7/8 X 4-1/4	WET YOKE 7/8 X 3-1/4	WET YOKE 7/8 X 4-1/4	DRY BEAVER- TAIL 7/8 X 3-1/4	DRY BEAVER- TAIL 1 X 4-1/4	WET BEAVER- TAIL 7/8 X 3-1/4	WET BEAVER- TAIL 1 X 4-1/4
JH40- OPT-C 0715069	JH40- OPT-D 50780402	JH40- OPT-E 50784792	JH40- OPT-F 50859727	JH40- OPT-G 50859735	JH40- OPT-H 50896398	JH40- OPT-I 50896406	JH40- OPT-J 50973718	JH40- OPT-K 50973726
←			←	←				
←			←	←				
←			←	←				
←			←	←				
←			←	←				





July 31, 1996

**GENERAL.**

The JH40 Jackhammer is a hand-held, medium-weight, pneumatic rock drill with automatic rifle bar rotation and exceptional hole cleaning ability. It is designed for blower or wet drilling; incorporates control of the "hole blowing" in the throttle valve for one-lever simplified control; and is equipped with a closed-center T-handle for general ground level work. The integral noise control muffler is designed to reduce the noise level of the drill to increase operator efficiency by improving the working area environment.

**JACKHAMER COMBINATIONS.**

The following list shows the model and part numbers for all available jackhammer combinations:

**JH40-STD:****1. JH40-STD (50719905).**

Blower Style, 1 in. hex x 4-1/4 in. long (25mm hex. x 108mm long) Chuck, Yoke Type Steel Holder.

**2. JH40-OPT-A. (50719913).**

Jackhammer complete. Blower Style, 7/8 in. hex. x 3-1/4 in. long (22mm hex. x 83mm long) Chuck, Yoke Type Steel Holder.

**3. JH40-OPT-B (50719921).**

Jackhammer complete - Blower Style, 7/8 in. hex. x 4-1/4 in. long (22mm hex. x 108mm long) Chuck, Yoke Type Steel Holder.

**4. JH40-OPT-C (50715069).**

Jackhammer complete. Wet Style, 1 in. hex. x 4-1/4 in. long (25mm hex. x 108mm long) Chuck, Yoke Type Steel Holder.

**5. JH40-OPT-D (50780402).**

Jackhammer complete. Blower Style, 7/8 in.

hex. x 4-1/4 in. long (22mm Hex. x 108mm long) Chuck, Beavertail Type Steel Holder.

**6. JH40-OPT-E (50784792).**

Jackhammer complete. Wet Style, 7/8 in. hex. x 4-1/4 in. long (22mm Hex. x 108mm long) Chuck, Beavertail Type Steel Holder.

**7. JH40-OPT-F (50859727).**

Jackhammer complete. Wet Style 7/8 in. hex. x 3-1/4 in. long (22mm Hex. x 83mm long) Yoke Type Steel Holder.

**8. JH40-OPT-G (50859735).**

Jackhammer complete. Wet Style, 7/8 in. hex. x 4-1/4 in. long (22mm Hex. x 108mm long) Yoke Type Steel Holder.

**9. JH40-OPT-H (50896398).**

Jackhammer complete. Blower Style, 7/8 in. hex. x 3-1/4 in. long (22mm Hex. x 83mm long) Beavertail Type Steel Holder.

**10. JH40-OPT-I (50896406).**

Jackhammer complete. Blower Style, 1 in. hex. x 4-1/4 in. long (22mm Hex. x 83mm long) Beavertail Type Steel Holder.

**11. JH40-OPT-J (50973718).**

Jackhammer complete. Wet Style, 7/8 in. hex. x 3-1/4 in. long (22mm Hex. x 83mm long) Beavertail Type Steel Holder.

**12. JH40-OPT-K (50973726).**

Jackhammer complete. Wet Style, 1 in. hex. x 4-1/4 in. long (25mm Hex. x 108mm long) Beavertail Type Steel Holder.

**LUBRICATION.**

A high-quality rock drill oil conforming to the physical and chemical properties outlined in the instruction manual must be added to the operating air supply to lubricate the moving parts of the jackhammer. The method of lubrication depends on actual operating conditions and customer preference:

a. An air line lubricator must be used with the JH40 Jackhammer. A high quality Rock Drill Oil conforming to Ingersoll–Rand specifications, as shown on the Instruction Tag attached to the lubricator must be used in the lubricator. The air line lubricator will be furnished only when specially ordered.

b. For continuous operation during an eight hour shift, an Ingersoll–Rand® 35364322, or other constant feed lubricator, should be installed in the air supply line about 11.5 ft. (3.5m) from the jackhammer. The 35364322 has a capacity of 1 U.S. pint (0.47 L) and will be furnished when specially ordered.

a. The piston stem bearing in the front end of the housing must also be checked after every eight hour shift if not sooner and oil level maintained. The oil fill plug is located under the exhaust deflector on the jackhammer.

**OPTIONAL EQUIPMENT**

Optional equipment is only furnished when specially ordered.

**a. WET OPTION.**

This option is used for dustless, wet drilling where minimum air consumption is required.

The water pressure for wet style machines should be maintained at about 10 psi (70 kPa) less than the air pressure. If water pressure exceeds air pressure, water will be forced into the drill and will carry away the lubricant. The water pressure should never fall below 40 psi (276 kPa).

**b. MUFFLER.**

An add on muffler is available for the jackhammer without one.

The muffler assembly is used to reduce jackhammer noise without hindering performance. This assembly is available for jackhammers that do not have a muffler.

**c. FLEX HANDLE.**

This handle is used in place of the standard handle to reduce the amount of vibration that the operator encounters.

**d. OPEN CENTER GRIP HANDLE.**

This handle is mounted to the backhead end of the jackhammer and allows for ease of transportation as well as an optional operator handle.

**OPTIONAL CHUCK AND FRONTHEAD WITH BEAVERTAIL TYPE STEEL HOLDER**

(Furnished only when specially ordered)

22mm Hex. x 108mm (7/8 in. Hex. x 4–1/4 in.) Jackhammer Shank	22mm Hex. x 83mm (7/8 in. Hex. x 3–1/4) Jackhammer Shank	Name of Part	Remarks
5001 4588 **5000 3144 5000 9182 5000 8945	5001 4554 5000 3136 5000 9182 5000 8945	CHUCK FRONTHEAD :BUSHING, fronthead (2) STEEL HOLDER	** This is the same Beavertail–Type Fronthead that is used for 25mm hex. x 108mm long (1 in. hex. x 4–1/4 in.) Jackhammer Shank.



# Worldwide Ingersoll-Rand sales offices

## U.S.A.

### U.S. C&M OFFICES

**Bethlehem, PA 18017-2293**  
1495 Valley Center Pkwy.  
215/882-8800

**Boston, MA 02125**  
33 Locust Street  
617/288-8988

**Casper, WY 82601**  
3273 N. I-25 Frontage Road  
307/237-4259

**Denver, CO 80207**  
5805 East 39th Ave.  
303/399-1580

**East Hanover, NJ 07936**  
98 Route #10  
201/887-1212

**Elkridge, MD 21227**  
5681 Main Street  
410/796-3200

**Gray, TN 37615**  
Suncrest Drive  
615/477-3114

**Houston, TX 77001**  
2210 McAllister  
713/681-9221

**Knoxville, TN 37922 (C&M)**  
112 Glenleigh Court  
Suite #1  
615/966-8800

**Knoxville, TN 37912 (IRES)**  
4726 Clinton Hwy.  
615/525-0404

**Milwaukee, WI 53225**  
12311 West Silver Springs Dr.  
414/461-7810

**Nashville, TN 37229**  
310 S. Second St.  
615/254-1811

**New Castle, DE 19702**  
91 Christiana Road  
302/324-9040

**New Cumberland, PA 17070**  
Exit 15 on Rt. 83  
4 miles south of Harrisburg  
717/938-1441

**New England**  
300 Turnpike Rd. -Route 9  
Southboro, MA 01772  
508/481-1350

**Philadelphia**  
Route 309  
Montgomeryville, PA 18936  
215/855-9990

**Phoenix, AZ 85007**  
820 N. 17th Ave.  
602/258-6493

**Pico Rivera, CA 90660**  
5211 Paramount Blvd.  
310/948-3801

**Portland, OR 97214**  
240 South East Clay Street  
503/232-0151

**Sacramento, CA 95836**  
1851 Bell Avenue  
916/641-1994

**San Leandro, CA 94577**  
1944 Marina Blvd.  
510/357-9131

**Scranton, PA 18505**  
605 Davis St.  
717/346-3885

**Seattle, WA 98168**  
11222 E. Marginal Way, S.  
206/762-7400

### U.S. C&M FACTORIES ROCK DRILLS

**Rotary blasthole deephole,  
monitoring rigs**  
Ingersoll-Rand Co.  
Rotary Drill Division  
2100 N. First St.  
Garland, TX 75040  
214/495-8181

**Downhole Drills and Bits; Pneumatic  
and Hydraulic Crawler Drills; Anchor  
Drills; Breakers and Jackhamers™.**  
Ingersoll-Rand Co.  
Rock Drill Division  
7500 Shadwell Drive  
Roanoke, VA 24019-5198  
703/362-3321

### COMPACTORS, PAVING MILLERS, ASPHALT PAVERS AND FORKLIFTS

Ingersoll-Rand Co.  
Road Machinery Division  
Ingersoll Drive  
Shippensburg, PA 17257  
717/532-9181

### UNDERGROUND EQUIPMENT

**Roadheaders; drill jumbos, diesel-  
powered production and utility equip-  
ment (scoops, haul dumps, etc.)**  
Contact Rock Drill Division  
Roanoke, VA

**Split Set rock stabilizers**  
Simmons-Rand Co.  
Split Set Division  
Suite 300  
100 Thanet Circle  
Princeton, NJ 08540-3662  
609/921-8688

### AIR COMPRESSORS

**Portable compressors, Generator  
Sets and Light Plants**  
Ingersoll-Rand Co.  
Portable Compressor Division  
P.O. Box 868  
501 Sanford Ave.  
Mocksville, NC 27028  
704/634-3561

**Small Compressor Plant**  
Ingersoll-Rand Co.  
101 Industrial Drive  
Campbellsville, KY 42718  
502/465-3511

### Centrifugal compressors (Centac)

Ingersoll-Rand Co.  
Centrifugal Compressor Division  
Route 45  
Mayfield, KY 42066  
502/247-8640

### Reciprocating and rotary-screw compressors

Ingersoll-Rand Co.  
Air Compressor Group  
P.O. Box 1600  
800A Beaty St.  
Davidson, NC 28036  
704/892-7100

### PUMPS

**Engineered centrifugal pumps**  
Ingersoll-Rand Co.  
P.O. Box 486  
Phillipsburg, NJ 08865  
201/859-7000

### Reciprocating pumps and standard centrifugal pumps

Ingersoll-Rand Co.  
P.O. Box 656  
Allentown, PA 18105  
215/433-6411

### Vertical turbine pumps

Ingersoll-Rand Co.  
Vertical Turbine Pump Division  
Hastings, NE 68901  
402/463-1306

### TOOLS, WINCHES

Ingersoll-Rand Co.  
Power Tool Division  
P.O. Box 1776  
Liberty Corner, NJ 07938  
201/647-6000

### LIQUID/SOLID SEPARATORS

Ingersoll-Rand Co.  
Impco Division  
150 Burke St.  
Nashua, NH 03061  
603/882-2711

## CANADA

### Surface and underground equipment Tools and industrial equipment

Ingersoll-Rand Canada Inc.  
2360 Millrace Court  
Mississauga, Ontario L5N1W2  
(1) 416/858-8480

Ingersoll-Rand Canada, Inc.  
2250 Hymus Blvd  
Dorval, Quebec H9P1J9  
(1) 514/683-9157

## MEXICO

### All equipment

Ingersoll-Rand, S.A. de C.V.  
Boulevard Centro  
Industrial #11  
Fracc. Industrial  
Puente de Vigas  
Tlalhepantla,  
54090 Edo. de Mexico  
Mexico  
52 (5) 390-40-21  
52 (5) 390-24-11

## SOUTH AMERICA

USA, Miami, Florida  
1 (305) 599-0500

Chile - Santiago  
56 (2) 41-198

Colombia - Bogota  
57 (1) 219-1406/1460

Venezuela - Caracas  
58 (2) 239-9369

## EUROPE

Austria - Vienna  
43 (222) 83-05-250

Belgium - Brussels  
32 (02) 216-99-95

France - Trappes  
33 (3) 050-61-10

Germany - Ratingen  
49 (2102) 48090

\*Italy - Milano  
39 (02) 950561

Netherlands - Zoeterwoude  
31 (071) 452200

Norway - Oslo  
47 (02) 39-15-26

Spain - Madrid  
34 (9) 1-671-07-00

Sweden - Spanga  
46 (08) 750-59-20

United Kingdom - London  
44 (01) 584-5070

\*Also for Bulgaria, Czechoslovakia,  
Hungary, Poland, Rumania, USSR,  
Yugoslavia.

## AFRICA-MIDDLE EAST

Egypt - Cairo  
(02)341-5190

South Africa - Alrode  
27 (011) 864-3930

## ASIA-PACIFIC

Australia - Melbourne  
61-(3) 794-1611

Hong Kong  
852 (5) 270183

India - Bombay  
91 (22) 4936765

Japan - Tokyo  
81 (3) 403-0841/7

Korea - Seoul  
82 (2) 776-2541

New Zealand - Auckland  
64 (9) 885096

Philippines - Manila  
63 (2) 89-85-06/08

Singapore  
(65) 8611555

**JACKHAMER Model JH40**  
(For Illustration, refer to Page 1)

REF NO	QTY	NAME OF PART	REMARKS	DRY YOKE 1 X 4-1/4 JH40-STD 50719905	DRY YOKE 7/8 X 3-1/4 JH40-OPT-A 50719913	DRY YOKE 7/8 X 4-1/4 JH40-OPT-B 50719921	WET YOKE 1 X 4-1/4 JH40-OPT-C 50715069	DRY BEAVER-TAIL 7/8 X 4-1/4 JH40-OPT-D 50780402	WET BEAVER-TAIL 7/8 X 4-1/4 JH40-OPT-E 50784792	WET YOKE 7/8 X 3-1/4 JH40-OPT-F 50859727	WET YOKE 7/8 X 4-1/4 JH40-OPT-G 50859735	DRY BEAVER-TAIL 7/8 X 3-1/4 JH40-OPT-H 50896398	DRY BEAVER-TAIL 1 X 4-1/4 JH40-OPT-I 50896406	WET BEAVER-TAIL 7/8 X 3-1/4 JH40-OPT-J 50973718	WET BEAVER-TAIL 1 X 4-1/4 JH40-OPT-K 50973726
1	2	ROD, ASSEMBLY		50003185	--	--	--	--	--	--	--	--	--	--	--
2	2	NUT, ASSEMBLY ROD		50003193	--	--	--	--	--	--	--	--	--	--	--
3	1	RETAINER, TUBE		50503606	--	--	--	--	--	--	--	--	--	--	--
4	1	"O" RING, TUBE RETAINER		95086526	--	--	--	--	--	--	--	--	--	--	--
5	1	TUBE		50763762	--	--	50763754	50763762	50763754	--	--	50763762	--	50763754	--
6	1	RUBBER, TUBE		50045673	--	--	--	--	--	--	--	--	--	--	--
8	1	HANDLE		50924380	--	--	50719897	50924380	50719897	--	--	50924380	--	50719897	--
9	1	STUD, HANDLE		50899467	--	--	--	--	--	--	--	--	--	--	--
10	2	NUT, HEX CAP	Should be removed when the JH40 is used with a Jackleg for Jackdrill applications	95216701	--	--	--	--	--	--	--	--	--	--	--
11	2	NUT, HEX CAP	Should be removed when the JH40 is used with a Jackleg for Jackdrill applications	51948016	--	--	--	--	--	--	--	--	--	--	--
12	1	LOCK WASHER, HANDLE BOLT	Should be removed when the JH40 is used with a Jackleg for Jackdrill applications	95210415	--	--	--	--	--	--	--	--	--	--	--
13	2	GRIP HANDLE	Should be removed when the JH40 is used with a Jackleg for Jackdrill applications	50899434	--	--	--	--	--	--	--	--	--	--	--
		ASSEMBLY, THROTTLE VALVE		50809748	--	--	--	--	--	--	--	--	--	--	--
14	1	. VALVE, THROTTLE		50809730	--	--	--	--	--	--	--	--	--	--	--
15	1	. LEVER, THROTTLE VALVE		51085637	--	--	--	--	--	--	--	--	--	--	--
16	1	"O" RING, THROTTLE VALVE		95018099	--	--	--	--	--	--	--	--	--	--	--
17	1	PIN, LOCATING		95957668	--	--	--	--	--	--	--	--	--	--	--
18	1	PLUG, HANDLE		95049359	--	--	--	--	--	--	--	--	--	--	--
19	1	PLUNGER, THROTTLE VALVE		50003748	--	--	--	--	--	--	--	--	--	--	--
20	1	SPRING, THROTTLE VALVE PLUNGER		50170927	--	--	--	--	--	--	--	--	--	--	--
21	1	PLUG, HANDLE		95049359	--	--	--	--	--	--	--	--	--	--	--
22	1	CONNECTION, HOSE		50974013	--	--	--	--	--	--	--	--	--	--	--
23	1	"O" RING		95086161	--	--	--	--	--	--	--	--	--	--	--
24	1	CAP, HOSE CONNECTION		50028117	--	--	--	--	--	--	--	--	--	--	--
25	1	PLUG, HANDLE					95214797		--	--	--	--	--	--	--

**JACKHAMER Model JH40**  
(For illustration, refer to Page 1)

REF NO	QTY	NAME OF PART	REMARKS	DRY YOKE 1 X 4-1/4	DRY YOKE 7/8 X 3-1/4	DRY YOKE 7/8 X 4-1/4	WET YOKE 1 X 4-1/4	DRY BEAVER-TAIL 7/8 X 4-1/4	WET BEAVER-TAIL 7/8 X 4-1/4	WET YOKE 7/8 X 3-1/4	WET YOKE 7/8 X 4-1/4	DRY BEAVER-TAIL 7/8 X 3-1/4	DRY BEAVER-TAIL 1 X 4-1/4	WET BEAVER-TAIL 7/8 X 3-1/4	WET BEAVER-TAIL 1 X 4-1/4
				JH40- STD 50719905	JH40- OPT-A 50719913	JH40- OPT-B 50719921	JH40- OPT-C 50715069	JH40- OPT-D 50780402	JH40- OPT-E 50784792	JH40- OPT-F 50859727	JH40- OPT-G 50859735	JH40- OPT-H 50896398	JH40- OPT-I 50896406	JH40- OPT-J 50973718	JH40- OPT-K 50973726
		COMPLETE, WATER HOSE CONNECTION					50975549		-	-	-			-	-
26	1	. SPUD, WATER CONNECTION					50028018		-	-	-			-	-
27	1	. RUBBER, WATER HOSE STEM					50028059		-	-	-			-	-
28	1	. STEM, WATER CONNECTION					50011808		-	-	-			-	-
29	1	. NUT WATER CONNECTION					50028042		-	-	-			-	-
30	1	. WATER, VALVE					50028000		-	-	-			-	-
33	1	MUFFLER		50997915	-	-	-	-	-	-	-	-	-	-	-
34	1	CAP, MUFFLER		50719871	-	-	-	-	-	-	-	-	-	-	-
35	1	CYLINDER		50719889	-	-	-	-	-	-	-	-	-	-	-
37	1	SEAL, ROTATION RATCHET		50719731	-	-	-	-	-	-	-	-	-	-	-
38	1	RATCHET, ROTATION		50719723	-	-	-	-	-	-	-	-	-	-	-
39	1	DOWEL PIN, ROTATION RATCHET		95385720	-	-	-	-	-	-	-	-	-	-	-
40	14	RIFLE, BAR		50003888	-	-	-	-	-	-	-	-	-	-	-
41	4	PAWL, ROTATION		50172386	-	-	-	-	-	-	-	-	-	-	-
42	4	PLUNGER, ROTATION PAWL		50172394	-	-	-	-	-	-	-	-	-	-	-
43	4	SPRING, ROTATION PAWL PLUNGER		50173269	-	-	-	-	-	-	-	-	-	-	-
45	1	VALVE, CHEST		50719830	-	-	-	-	-	-	-	-	-	-	-
46	1	VALVE		50006816	-	-	-	-	-	-	-	-	-	-	-
47	1	GUIDE, VALVE		50719822	-	-	-	-	-	-	-	-	-	-	-
49	1	PISTON		50965987	-	-	-	-	-	-	-	-	-	-	-
50	1	NUT, RIFLE		50004183	-	-	-	-	-	-	-	-	-	-	-
	1	PISTON STEM BEARING ASSEMBLY		50719772	-	-	-	-	-	-	-	-	-	-	-
51	1	. BEARING, PISTON STEM		50719806	-	-	-	-	-	-	-	-	-	-	-
52	1	SLEEVE, PISTON STEM BEARING		50719764	-	-	-	-	-	-	-	-	-	-	-
54	1	CHUCK		50014562	50014554	50014588	50014562	50014588	-	50014554	50014588	50014554	50014562	50014554	50014562
55	1	DRIVER, CHUCK		50003375	-	-	-	-	-	-	-	-	-	-	-
56	1	NUT CHUCK		50023126	-	-	-	-	-	-	-	-	-	-	-
58	1	FRONTHEAD		50719855	50720770	50719855	-	50793264	-	50720770	50719855	50896380	50793264	50896380	50793264
59	2	BUSHING, FRONTHEAD						50004182	-			50009182	-	-	-
60	1	HOLDER, STEEL		50899400	50899426	50899418	50899400	50008945	-	50899426	50899418	50008945	50008960	50008945	50008960
61	2	BOLT, STEEL HOLDER						50009174	-			-	-	-	-
62	2	SPRING, STEEL HOLDER BOLT						51357606	-			-	-	-	-
63	2	NUT, STEEL HOLDER BOLT						50009158	-			-	-	-	-
64	2	RETAINER RING, STEEL HOLDER BOLT NUT						50009190	-			-	-	-	-

(continued)

**JACKHAMER Model JH40**  
(For illustration, refer to Page 1)

REF NO	QTY	NAME OF PART	REMARKS	DRY YOKE	DRY YOKE	DRY YOKE	WET YOKE	DRY BEAVER-TAIL	WET BEAVER-TAIL	WET YOKE	WET YOKE	DRY BEAVER-TAIL	DRY BEAVER-TAIL	WET BEAVER-TAIL	WET BEAVER-TAIL
				1 X 4-1/4	7/8 X 3-1/4	7/8 X 4-1/4	1 X 4-1/4	7/8 X 4-1/4	7/8 X 4-1/4	7/8 X 3-1/4	7/8 X 4-1/4	7/8 X 3-1/4	7/8 X 3-1/4	1 X 4-1/4	7/8 X 3-1/4
				JH40-STD 50719905	JH40-OPT-A 50719913	JH40-OPT-B 50719921	JH40-OPT-C 50715069	JH40-OPT-D 50780402	JH40-OPT-E 50784792	JH40-OPT-F 50859727	JH40-OPT-G 50859735	JH40-OPT-H 50896398	JH40-OPT-I 50896406	JH40-OPT-J 50973718	JH40-OPT-K 50973726
65	1	BOLT, STEEL HOLDER		50899392	--	--	--			--	--				
66	1	NUT, STEEL HOLDER BOLT		95077301	--	--	--			--	--				
67	1	PLUNGER, STEEL HOLDER		50550409	--	--	--			--	--				
68	1	SPRING, STEEL HOLDER PLUNGER		50550391	--	--	--			--	--				
69	1	PLUG		95002143	--	--	--			--	--				

