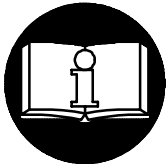


MAINTENANCE SECTION COVERING HAND-HELD PISTOL GRIP POWER MODULES for SERIES DEP30 TORQUE CONTROL WRENCHES



⚠ WARNING

**IMPORTANT SAFETY INFORMATION ENCLOSED.
READ ALL THESE INSTRUCTIONS BEFORE PLACING TOOL IN SERVICE OR
OPERATING THIS TOOL AND SAVE THESE INSTRUCTIONS.
IT IS THE RESPONSIBILITY OF THE EMPLOYER TO PLACE THE INFORMATION
IN THIS MANUAL INTO THE HANDS OF THE OPERATOR.
FAILURE TO OBSERVE THE FOLLOWING WARNINGS COULD RESULT IN INJURY.**

Disconnect the Power Cord from the receptacle before performing any maintenance on this tool.



This symbol is to alert the user and service personnel to the presence of uninsulated dangerous voltage that will cause a risk of electric shock.

This symbol is to alert the user and service personnel to the presence of important operating instructions that must be read and understood to prevent personal injury, electrical shock or damage to the equipment.

**WHEN USING ELECTRIC TOOLS, BASIC SAFETY PRECAUTIONS SHOULD
ALWAYS BE FOLLOWED TO REDUCE THE RISK OF FIRE, ELECTRIC SHOCK
AND PERSONAL INJURY, INCLUDING THE FOLLOWING.**

PLACING TOOL IN SERVICE

- Use only with Series TMAD Controllers.
- Always operate, inspect and maintain this tool in accordance with all regulations (local, state, federal and country), that may apply to hand held/hand operated electric tools.
- Inspect tool cords periodically and if damaged, have them repaired by an authorized service facility.
- Do not remove any labels. Replace any damaged label.

USING THE TOOL

- Always wear eye protection when operating or performing maintenance on this tool.

- Power tools can vibrate in use. Vibration, repetitive motions, or uncomfortable positions may be harmful to your hands and arms. Stop using any tool if discomfort, tingling feeling or pain occurs. Seek medical advice before resuming use.
- **Guard Against Electric Shock.** Prevent body contact with earthed or grounded surfaces. For example; pipes, radiators, ranges, refrigerator enclosures.
- **Don't abuse Cord.** Never carry tool by cord or yank it to disconnect from receptacle. Keep cord from heat, oil, and sharp edges.
- **Keep work area clean.** Cluttered areas and benches invite injuries.

(Continued on page 2-2)

NOTICE

The use of other than genuine Ingersoll-Rand replacement parts may result in personal injury, decreased tool performance and increased maintenance, and may invalidate all warranties.

Have your tool repaired by a qualified person. This electric tool is in accordance with the relevant safety requirements. Repairs should only be carried out by qualified persons using original spare parts, otherwise this may result in considerable danger to the user.

Repairs should be made only by authorized, trained personnel. Consult your nearest Ingersoll-Rand Authorized Servicenter.

Refer All Communications to the Nearest
Ingersoll-Rand Office or Distributor.

© Ingersoll-Rand Company 1997

Printed in U.S.A.

INGERSOLL-RAND®
PROFESSIONAL TOOLS

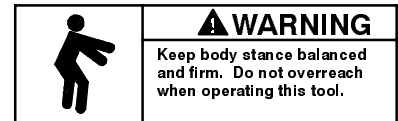
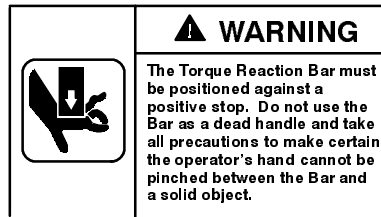
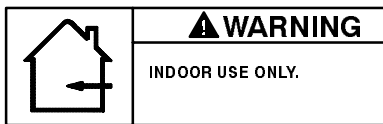
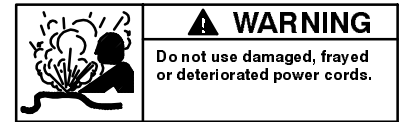
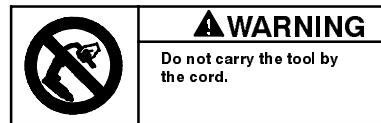
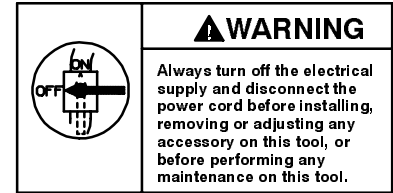
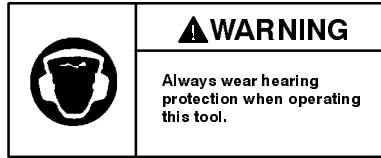
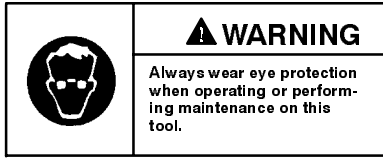


FAILURE TO OBSERVE THE FOLLOWING WARNINGS COULD RESULT IN INJURY.

USING THE TOOL (*Continued*)

- **Consider work area environment.** Don't expose power tools and chargers to water. Keep work area well lit. Do not use tool in explosive or flammable atmospheres.
- **Keep bystanders and children away.** Do not permit unauthorized personnel to operate this tool, or touch tool or cord.
- **Store idle tools.** When not in use, tools should be stored in a dry, high or locked up place, out of reach of children.
- **Don't force tool.** It will do the job better and more safely at the rate for which it was intended.
- **Use the right tool.** Do not force a small tool or attachment to do the job of a heavy-duty tool.
- **Do not use a tool for a purpose for which it is not intended.** Example: Do not use a screwdriver as a drill.
- **Dress properly.** Do not wear loose clothing or jewelry. They can be caught in moving parts. Rubber gloves and non-skid footwear are recommended when working outdoors. Wear protective hair covering to contain long hair.
- **Secure work.** Use clamps or a vise to hold work. Operators often need both hands to perform job functions.
- **Don't overreach.** Keep proper footing, balance, and a firm grip on the tool at all times.
- **Maintain tools with care.** Keep tools clean for better and safer performance. Follow instructions for lubricating and changing accessories. Inspect tool cords periodically and if damaged, have them repaired by an authorized service facility. Inspect extension cords periodically and replace if damaged. Keep handles dry, clean, and free from oil and grease.
- **Remove adjusting keys and wrenches.** Form habit of checking to see that keys and adjusting wrenches are removed from tool before turning it on.
- **Avoid unintentional starting.** Don't carry tool with finger on switch.
- **Do not drop or abuse the tool.**
- **Whenever a tool is not being used, position the Power Switch to the "OFF" position and unplug the power cord.**
- **Stay alert.** Watch what you are doing. Use common sense. Do not operate tool when you are tired.
- **Check damaged parts.** Before further use of the tool, a guard or other part that is damaged should be carefully checked to determine that it will operate properly and perform its intended function. Check for alignment of moving parts, binding of moving parts, breakage of parts, mounting, and any other conditions that may affect its operation. A guard or other part that is damaged should be properly repaired or replaced by an authorized service center unless otherwise indicated elsewhere in this operation manual.
- **Have defective switches replaced by an authorized service center.**
- **Do not use the tool if the switch does not turn it on and off.**
- **Whenever the Angle Head is installed or repositioned, the Throttle Lever must be positioned so that reaction torque will not tend to retain the throttle in the "ON" position.**
- **When installing or removing the output device on a tool, ALWAYS hold the tool by the hex on the Gear Case while tightening the Coupling Nut. NEVER grasp the composite tool body or handle in vise jaws to restrain the tightening torque of the Coupling Nut. Such practice will result in damage to the tool.**
- **Do not use power units and gear trains that exceed the capability of the output device.**
- **The Tube Nut Attachment has an opening on the front side for construction and application purposes. DO NOT, under any circumstance place your fingers in this opening.**
- **The Torque Reaction Bar must be positioned against a positive stop. Do not use the Bar as a dead handle and take all precautions to make certain the operator's hand cannot be pinched between the Bar and a solid object.**
- **When operated continuously for long periods of time, Series DE Nutrunners may become hot at the spindle end of the tool. Take all precautions necessary to avoid skin contact with the hot surfaces. Prolonged contact may result in burns.**
- **All Series D Torque Control Wrenches and Nutrunners with reverse capability have rotational arrows molded into the housing in the area of the reversing mechanism. When the direction switching device is positioned nearest the molded circular arrow with an "F" in the center, spindle rotation will be forward or clockwise direction. When the direction switching device is positioned nearest the molded circular arrow with an "R" in the center, spindle rotation will be reverse or counter-clockwise direction.**

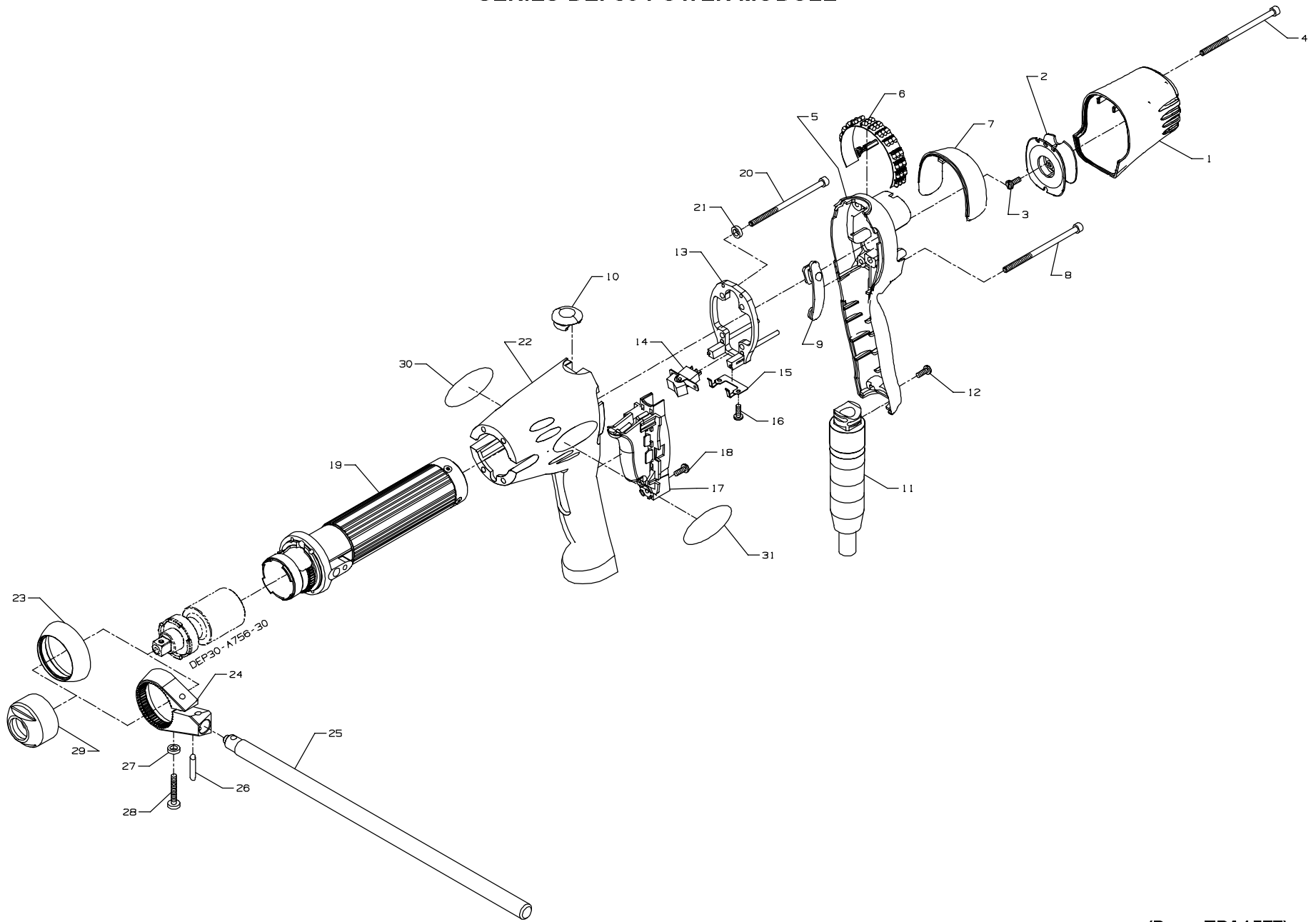
WARNING LABEL IDENTIFICATION



WIRING CHART

CONNECTOR PIN	CABLE WIRE COLOR	LOCATION	LOGIC
A B C D E	Red Black Green White Shield	Transducer Cable (4 Wire Shielded)	(+) Excitation (-) Excitation (+) Signal (-) Signal Shield
F G H J K L M N P R S T	White Green/White Red, Red/Green, Red/Orange Blue/Black Black Red/Black Orange/Black Green/Black Green Blue/White White/Black Blue	Logic Cable (16 Wire)	Free Speed Soft Start (+) 5 Volt Reverse Cycle Complete (Optional) Red LEDs Yellow LEDs Green LEDs Ground Sense PTC Common Encoder "H1"
U V W	Red Black White	Motor Power Leads	Phase U Phase V Phase W
X Y	Red/White Orange	Logic Cable (16 Wire)	Encoder "H2" Encoder "H3"
Z	Green	Ground Lead	Ground

SERIES DEP30 POWER MODULE



2-4

(Dwg. TPA1577)

PART NUMBER FOR ORDERING

PART NUMBER FOR ORDERING

2-5

1	Rear Motor Housing	DEP30-40R	22	Front Motor Housing	DEP30-40F
2	Fan Orifice	DEP30-795	23	Access Cover (for models DEP3 and DEP5)	DEP30-749
3	Fan Orifice Mounting Screw	DEP30-810		Torque Reaction Arm Kit (for models DEP9, DEP15, DEP20, DEP25 and DEP30)	DEP30-K48
4	Rear Motor Housing Mounting Screw (2)	DEP30-68	24	Torque Reaction Arm Bracket	DEP30-48
5	Middle Motor Housing	DEP30-40M	25	Torque Reaction Arm Bar	DEP30-48Y
6	Light Ring	DEP30-98	26	Reaction Arm Pin	DEP30-669
7	Light Ring Lens	DEP30-600	27	Pinch Bolt Lock Washer	4U-58
8	Switch Plate Mounting Screw (4)	DEP30-702	28	Bracket Pinch Bolt	502-638
9	Wear Strip (2)	DEP30-703	*	Warning Label	DEP30-802
10	Top Cable Portal Plug	DEP30-701	29	Spindle Cap	DEP30-531
11	Cable Assembly	DEP30-249	30	Warning Label	DEP30-99
12	Cable Clamping Screw (2)	R1410-634	31	Nameplate Label	
13	Bearing Plate Assembly	DEP30-A13		for model DEP3	DEP3-301
14	Directional Switch Assembly	DEP30-A19		for model DEP5	DEP5-301
15	Switch Keeper Clip	DEP30-515		for model DEP9	DEP9-301
16	Keeper Clip Mounting Screw (2)	DEP30-54		for model DEP15	DEP15-301
17	Trigger Switch Assembly	DEP30-A20		for model DEP20	DEP20-301
18	Trigger Switch Mounting Screw	DAA40-19		for model DEP25	DEP25-301
19	Motor Assembly	DEP30-A22		for model DEP30	DEP30-301
20	Motor Mounting Screw (4)	DEP30-704	*	Suspension Bail	7L-365
21	Mounting Screw Lock Washer (4)	DEP30-58			

* Not illustrated.

NOTES

NOTES

NOTICE

SAVE THESE INSTRUCTIONS. DO NOT DESTROY.

