

**MAINTENANCE SECTION COVERING
DEA40-K273EL EXTENDED LEVER KIT
FOR
SERIES DEA40 TORQUE CONTROL ANGLE WRENCHES**



This symbol is to alert the user and service personnel to the presence of uninsulated dangerous voltage that will cause a risk of electric shock.

! WARNING



This symbol is to alert the user and service personnel to the presence of important operating instructions that must be read and understood to prevent personal injury, electrical shock or damage to the equipment.

! WARNING

When installing or removing the Lever Kit on a tool, use a copper or leather cover on the vise jaws and **ALWAYS** hold the tool by the flats on the Gear Case or by the front of the Angle Head. **NEVER** grasp the composite tool body or handle in vise jaws. Such practice will result in damage to the tool and will cause the wire leads to malfunction creating an electric shock hazard.

NOTICE

The use of other than genuine Ingersoll-Rand replacement parts may result in decreased tool performance and increased maintenance, and may invalidate all warranties.

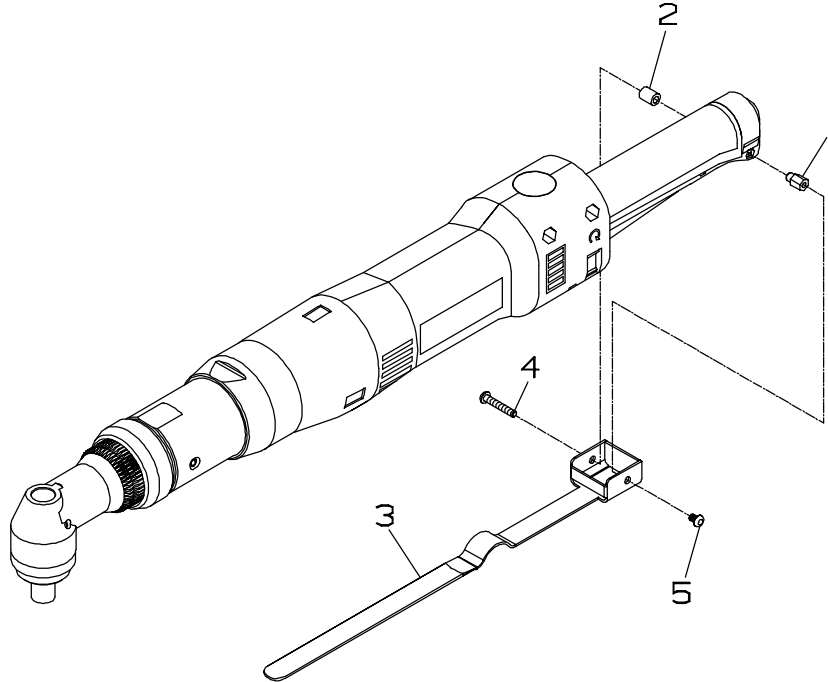
Ingersoll-Rand is not responsible for customer modification of tools for applications on which Ingersoll-Rand was not consulted.

Repairs should be made only by authorized, trained personnel. Consult your nearest Ingersoll-Rand Servcenter.

It is the responsibility of the employer to place the information in this manual into the hands of the person installing the kit.

MAINTENANCE SECTION

EXTENDED LEVER KIT FOR SERIES DEA40 ANGLE WRENCH



(Dwg. TPA1544-1)



PART NUMBER FOR ORDERING

	Lever Kit	DEA40-K273EL
1	Housing Nut	DEA40-23EL
2	Spacer	DEA40-908EL
3	Lever	DEA40-273EL
4	Housing Screw (long)	DEA40-704
5	Housing Screw (short)	DEA40-704EL



Always disconnect electrical power when performing maintenance work on this tool.

Assembly of the Extended Lever

1. Remove the rear Screw and Nut from the Tool Handle.
2. Insert the Extended Lever Housing Nut (1) into the Tool Handle.
3. Install the Extended Lever Spacer (2) from the opposite side of the Tool Handle.
4. Place the Extended Lever (3) over the Nut and Spacer.
5. Insert the long Housing Screw (4) through the hole in the Lever, through the hole in the Extended Lever Spacer and tighten it into the Extended Lever Housing Nut.
6. Install the short Housing Screw (5) through the remaining hole in the Lever and tighten it into the Extended Lever Housing Nut.

Disassembly of the Extended Lever

1. Remove the short Housing Screw from the Extended Lever Housing Nut.
2. Remove the Long Housing Screw from the opposite side of the Tool Housing.
3. Slide the Extended Lever off the Tool Handle.
4. Remove the Extended Lever Spacer and the Extended Lever Housing Nut.
5. Replace the original Nut and Screw if the Extended Lever is to be removed permanently.

NOTICE

SAVE THESE INSTRUCTIONS – DO NOT DESTROY