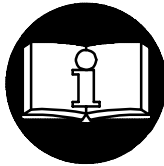
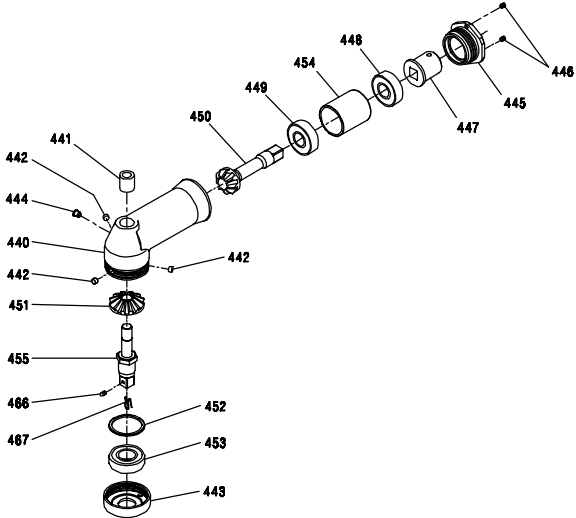


# 4UA9 ANGLE ATTACHMENT ASSEMBLY for 1/2" IMPACTTOOLS



**WARNING**

Read the OPERATION AND MAINTENANCE MANUAL included with the tool for warnings and cautions before operating the tool with this attachment.



(Dwg. TPC610)

PART NUMBER FOR ORDERING

PART NUMBER FOR ORDERING

	Angle Attachment Assembly ...	4UA9	449	Bevel Pinion Front Bearing ...	T06-24
440	Angle Housing .....	4UA9-600	450	Bevel Pinion .....	4UA9-602
441	Spindle Upper Bearing .....	4UA9-603	451	Bevel Gear .....	4UA9-601
442	Spindle Bearing Cap Retainer (3) .....	4UA9-491	452	Lower Bearing Locating Ring .....	4UA9-426
443	Spindle Bearing Cap .....	4UA9-531	453	Spindle Lower Bearing .....	4UA9-593
444	Grease Fitting .....	130SR-188	454	Bevel Pinion Bearing Spacer ..	4UA9-612
445	Pinion Bearing Retainer .....	4UA9-589	455	Socket Adapter Spindle (1/2" square driver) .....	4UA9-607A-1/2
446	Retainer Set Screw (2) .....	4UA9-561	466	Ball-Type Socket Retaining Plunger .....	5UHD-715
447	Bevel Pinion Driver (1/2" square driver) .....	4UA9-563-1/2	467	Retaining Plunger Spring ...	5UHD-718
448	Bevel Pinion Rear Bearing ...	4UA9-604			

**NOTICE**

The use of other than genuine Ingersoll-Rand replacement parts may result in safety hazards, decreased tool performance and increased maintenance, and may invalidate all warranties.

Ingersoll-Rand is not responsible for customer modification of tools for applications on which Ingersoll-Rand was not consulted.

Repairs should be made only by authorized, trained personnel. Consult your nearest Ingersoll-Rand Authorized Servicenter.

It is the responsibility of the employer to place the information in this manual into the hands of the operator.

Refer All Communications to the Nearest  
Ingersoll-Rand Office or Distributor.

© Ingersoll-Rand Company 1994

Printed in U.S.A.

**INGERSOLL-RAND®**  
**PROFESSIONAL TOOLS**

