

SERIES IRBS2 AND IRBS3 SINGLE ARM WORKSTATIONS FOR AIR AND ELECTRIC TOOLS

WARNING

When used with electric tools, all pertinent electrical safety regulations for the tool must be adhered to when installing these Workstations.

NOTICE

These Workstations are furnished without Balancers (unless specifically ordered from Ingersoll-Rand) and are for use with the customer's tools. A Balancer **MUST** be used with these Workstations when a Torque Absorber Assembly is not used and should be used in all applications. Do not use a Balancer that is unable to support the weight of the tool.

NOTICE

The use of other than genuine Ingersoll-Rand replacement parts may result in decreased tool performance and increased maintenance, and may invalidate all warranties.

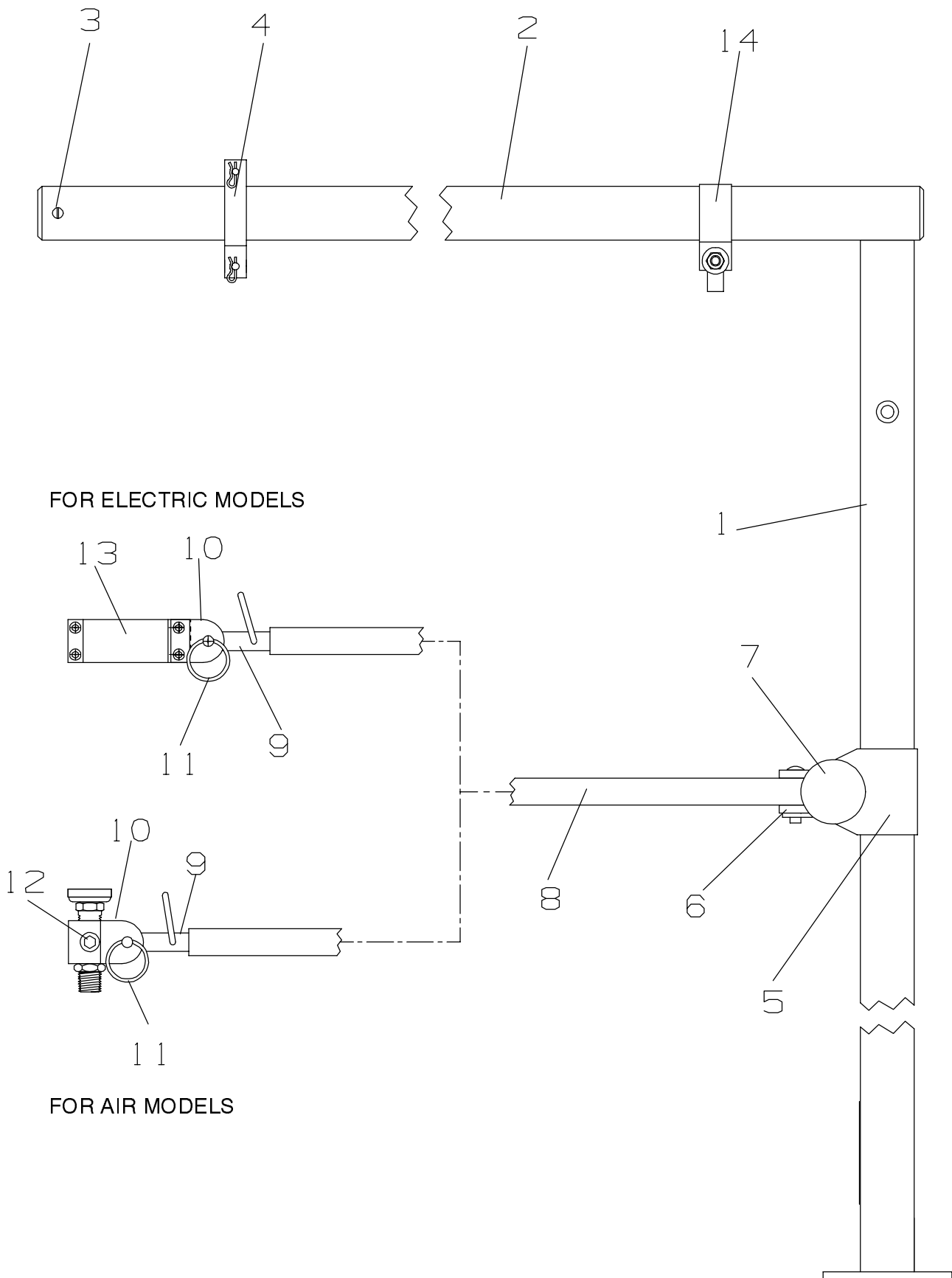
Ingersoll-Rand is not responsible for customer modification of tools for applications on which Ingersoll-Rand was not consulted.

Repairs should be made only by authorized trained personnel. Consult your nearest Ingersoll-Rand Authorized Servicenter.

Specific test data, when applicable, can be found in the Special Instructions Section of this manual.

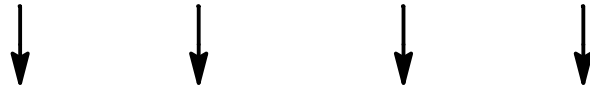
It is the responsibility of the employer to place the information in this manual into the hands of the operator.

INGERSOLL-RAND®
PROFESSIONAL TOOLS



(Dwg. TPC590)

PART NUMBER FOR ORDERING



		AIR		ELECTRIC	
		24"	30"	24"	30"
1	Post Assembly	IR48697-1	IR48697-1	IR48697-2	IR48697-2
+	* Bushing	IR48696-1	IR48696-1	IR48696-1	IR48696-1
2	Swing Arm Assembly	IR48704-2	IR48704-3	IR48704-2	IR48704-3
3	Stop Screw	IR48698-1	IR48698-1	IR48698-1	IR48698-1
4	Top Roller Assembly	IR48729-1	IR48729-1	IR48729-1	IR48729-1
	Torque Absorber Assembly (not included with models ending in NO or E0)	IR48723-2	IR48723-3	IR48723-2E	IR48723-3E
5	Column Bracket	IR48711-1	IR48711-1	IR48711-1	IR48711-1
	* Bracket Hardware Package	IR48723-HWP	IR48723-HWP	IR48723-HWP	IR48723-HWP
6	Shaft Bracket	IR48713-1	IR48713-1	IR48713-1	IR48713-1
7	Bracket Knob (2)	IR48715-1	IR48715-1	IR48715-1	IR48715-1
8	Shaft Assembly	IR48705-2	IR48705-3	IR48705-2	IR48705-3
9	Arm Assembly	IR48709-2	IR48709-3	IR48709-2	IR48709-3
10	Mounting Block	IR48720-1	IR48720-1	IR49087	IR49087
11	Ring Pin	IR48719-1	IR48719-1	IR48719-1	IR48719-1
12	Pipe Plug (2)	IRY17-151	IRY17-151	---	---
13	Tool Clamp Assembly	---	---	IR49091	IR49091
	* Tool Clamp Fastener Package	---	---	IR49731	IR49731
14	Electric Clamp Kit	---	---	IR48703-1	IR48703-1
	* Cord Holder (2)	---	---	IR48710-1	IR48710-1
	* Wire Tie (2)	---	---	IR48712-1	IR48712-1
	* Bench Clamp Assembly	48732-1	48732-1	48732-1	48732-1

- * Not illustrated.
- + If Bushing replacement becomes necessary, press the new Bushing into the Post until it is flush with the top of the Post, then carefully hand ream the I.D. to 0.626" plus or minus 0.001".