

OPERATION AND MAINTENANCE MANUAL FOR MODEL EC700T ERGO-CLIP

▲WARNING

When using electric tools, basic safety precautions should always be followed to reduce the risk of fire, electric shock and personal injury, including the following:

Read all instructions before operating this tool.

Disconnect the Tool Power Cord from the receptacle before performing any maintenance on this tool.

Do not attempt to repair this tool unless you are a qualified electrician.

Always wear eye protection when operating an Ergo-Clip.

1. **Keep work area clean.**
Cluttered areas and benches invite injuries.
2. **Consider work area environment.**
Do not expose the tool or components to water. Keep work area well lit.
Do not use tool in presence of flammable liquids or gases.
3. **Guard against electric shock.**
Prevent body contact with grounded surfaces, such as pipes, radiators, metal structures or other electrical products.
4. **Keep children and bystanders away.**
Do not permit unauthorized personnel to operate this tool.
5. **Store idle tools.**
When not in use, tools should be stored in a dry, secured area.
6. **Do not force tool.**
It will do the job better and safer at the rate for which it was intended.
7. **Use right tool.**
Do not use a small tool or attachment to do the job of a heavy-duty tool.
8. **Dress properly.**
Do not wear loose clothing or jewelry which can be caught in moving parts.
Wear protective hair covering to contain long hair.
9. **Use safety glasses.**
10. **Do not abuse cord.**
Never carry a tool by its cord or pull the cord to disconnect it from a receptacle.
Keep cord away from heat, oil, solvents and sharp edges.
11. **Secure the work piece.**
Use a clamp, fixture or a vise to hold the work piece.
Operators often need both hands to perform job functions.
12. **Do not over-reach.**
Keep proper footing and balance at all times.
13. **Maintain tools with care.**
Inspect tool cords periodically and if damaged, have repaired by an authorized service facility. Keep handles dry, clean and free from oil and grease.

NOTICE

The use of other than genuine Ingersoll-Rand replacement parts may result in decreased tool performance and increased maintenance, and may invalidate all warranties.

**INGERSOLL-RAND
PROFESSIONAL TOOLS
Allen & Martinsville Roads
P.O. Box 1776
Liberty Corner, NJ 07938**

14. **Disconnect tools** when not in use and when changing accessories.
15. **Avoid unintentional starting.**
Be sure power switch is off before connecting the tool plug.
16. **Stay alert.**
Watch what you are doing. Use common sense. Do not operate tool when you are tired.
17. **Remove adjusting keys and wrenches.**
Form habit of checking to see that keys and wrenches are removed from the tool before turning it on.
18. **Check damaged parts.**
Before further use of the tool, a guard or other part that is damaged should be carefully checked to determine that it will operate properly and perform its intended function. Check for alignment of moving parts, binding of moving parts, breakage of parts, mounting, and any other condition that may affect its operation. A guard or other part that is damaged should be properly repaired or replaced by an authorized service center unless otherwise indicated elsewhere in this instruction manual.

NOTICE

Have defective switches replaced by an authorized service center. Do not use tool if switch does not turn it on and off.

OPERATIONS CAUTIONS

⚠ WARNING

Keep hands away from the Blades.

Whenever changing Blades (17), make certain the Rocker Switch (28) is in the off position and the tool is unplugged.

Do not let the Blades or any material come in contact with the Cord (40).

1. Be sure that the Switch is off before inserting the plug into a receptacle. When the tool is not in use or when the power is interrupted, disconnect the plug from the receptacle.
2. Do not allow chemicals such as acetone, benzene, thinner, ketone, trichloroethylene or other similar chemicals to come in contact with the tool housing as damage will result.

3. Do not store or use this tool within easy reach of children.
4. Do not store or use this tool where the humidity is high or where the temperature and humidity can undergo sudden changes.

NOTICE

**SAVE THESE INSTRUCTIONS.
DO NOT DESTROY.**

GROUNDING INSTRUCTIONS

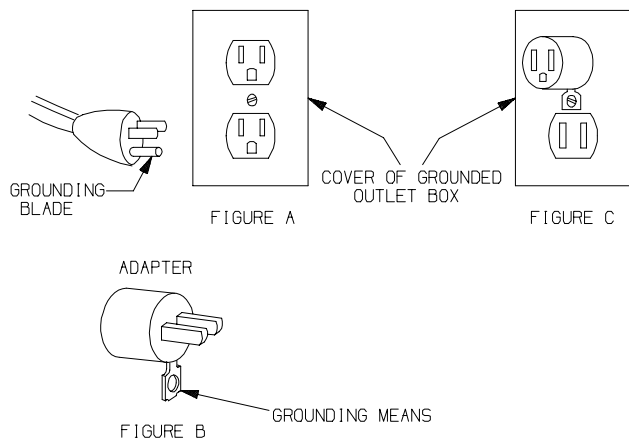
The tool must be grounded while in use to protect the operator from electric shock.

The tool is equipped with a three conductor cord and three-prong grounding-type plug to fit the proper grounding-type receptacle. The green (or green and yellow) conductor in the cord is the grounding wire. Never connect the green (or green and yellow) wire to a live terminal. If your unit is for use on less than 150V, it has a plug that looks like that shown in Figure A. An adapter (see Figure B) is available for connecting Figure A-type plugs to 2-prong receptacles. The green colored rigid grounding strap must be connected (see Figure C) to a permanent ground such as to a properly grounded outlet box.

For safe use of adapters, the outlet box must be grounded.

If there is any doubt, have a qualified electrician check connections.

Use only 3-wire extension cords that have 3-prong grounding type plugs and 3 pole receptacles that accept the controllers plug. Replace or repair damaged cords.



(Dwg. TPD446-1)

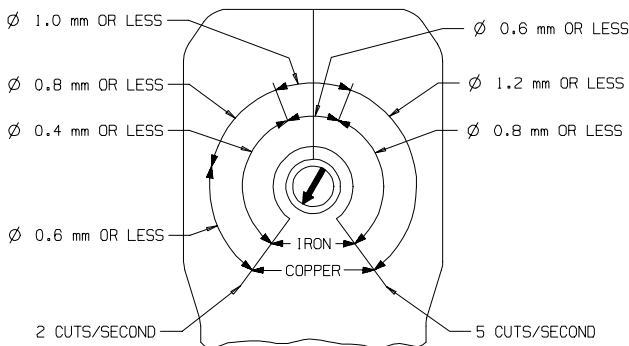
OPERATION

⚠ WARNING

Before inserting the plug into the receptacle, make sure that the main power switch is off.

Using the Tool

1. Adjust Blade speed to match material to be cut. Turn dial at bottom of Control Assembly (38) until arrow on dial points to the type and thickness of material to be cut. See illustration below.



CUTTER SPEED ADJUSTMENT RANGE FOR CUTTING IRON AND COPPER WIRE OF VARYING THICKNESSES

(Dwg. TPD1250)

NOTICE

Cutting force depends on frequency of usage, type of blades used, sharpness of blades and type of material being cut. Therefore, the illustration is meant to be used as a general guide.

2. Select the cutting quality level which will match the material being cut. Turning the Cutter Adjusting Screw (31) in a **clockwise** direction will give a finer cut while turning the Screw in a **counterclockwise** direction give a coarser cut.

NOTICE

Excessive tightening of the Cutter Adjustment Screw will shorten the useful life of the tool. If Blade force and speed are not adjusted within the range appropriate for the material being cut, the Blades will bind causing inefficient operation and damage to the tool.

3. Turn on Rocker Switch (28) and press Trigger (26). This will activate Blades (17).
4. If the Blades bind, release the Trigger and move the Rocker Switch to the Reverse position. The Blades will then release. When the Rocker Switch is released, it will automatically return to the OFF position.

⚠ CAUTION

Do not operate the Trigger while engaging the Power Switch.

Blade Replacement

⚠ WARNING

Always turn off the Power Switch and unplug the power cord from the receptacle before adjusting or changing Blades.

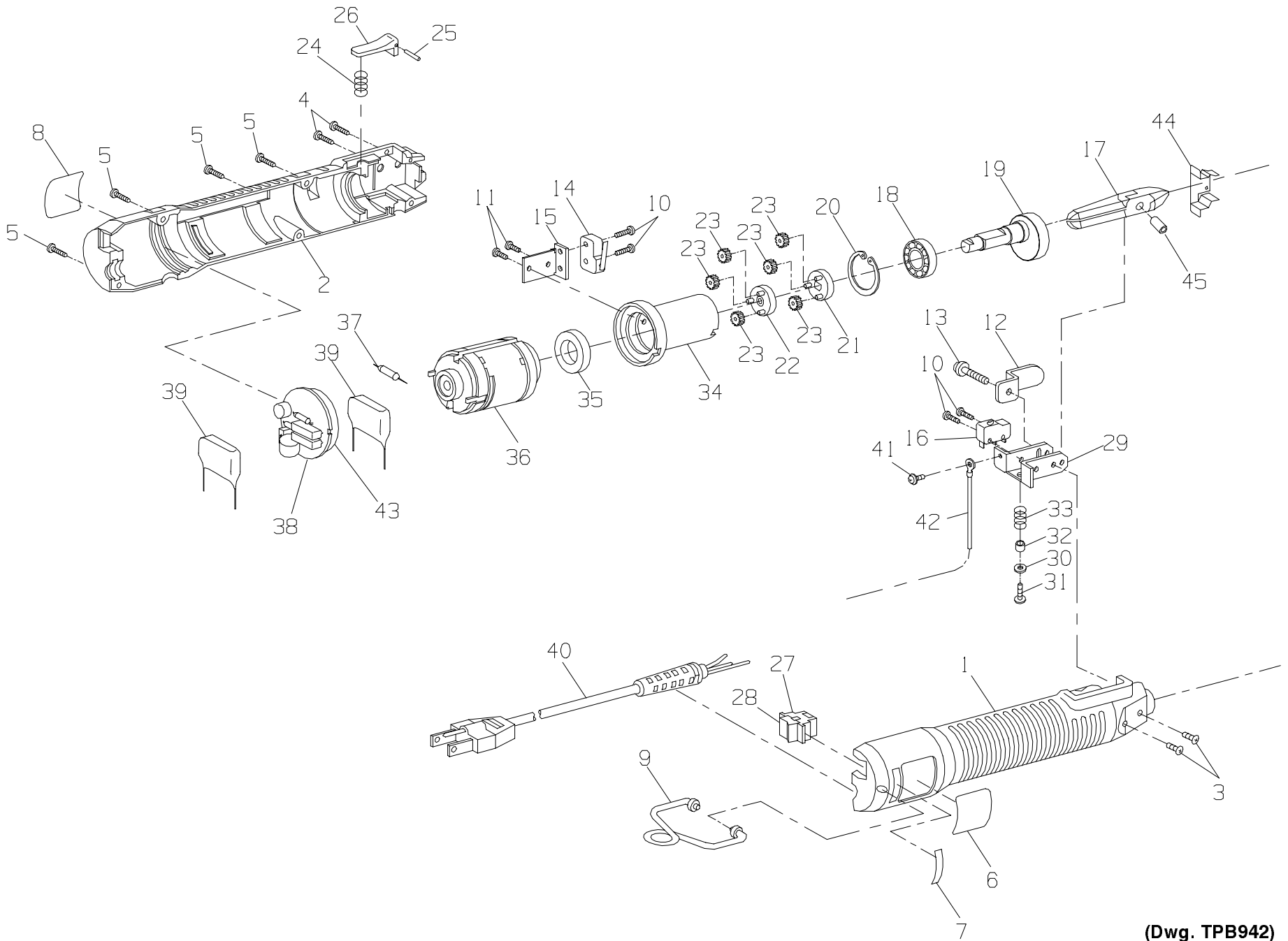
When the cutting quality cannot be suitably adjusted even after tightening the Cutter Adjustment Screw, the Blades must be replaced. Replace Blades as follows:

1. Loosen the Cutter Adjusting Screw (31) and remove the Screw/Washer (13). Remove the Penetration Preventing Cover (44).
2. Squeeze Blades together and remove from tool.
3. Remove Sleeve (45) from hole in old Blades and insert into hole in new Blades.
4. Hold Blades shut and insert the rear of the Blades into the tool body. Replace the Penetration Preventing Cover, install the Screw/Washer and tighten.
5. Adjust the cutting quality as directed in steps 1 and 2 in section **Using the Tool**.

NOTICE

DO NOT ATTEMPT TO REPAIR THIS TOOL.

All repairs and maintenance of this tool and its cord must be performed by an authorized service center. See Form 6647 for the service center nearest you.



PART NUMBER FOR ORDERING 

PART NUMBER FOR ORDERING 

	Housing Assembly	EC70-A40		Trigger Package	EC70-93A
1	Frame A	-----	24	Spring	-----
2	Frame B	-----	25	Pin	-----
+ 3	Screw (2)	-----	26	Trigger	-----
+ 4	Tapping Screw (2)	-----		Switch Assembly	EC70-666A
+ 5	Tapping Screw (4)	-----	27	Switch	-----
6	Nameplate	EC70-301	28	Rocker	-----
7	Label	EC70-99		Blade Holder Package	EC70-95A
8	Warning Label	EC70-303	29	Blade Holder	-----
9	Lifting Hook Assembly	EC60T-365	30	Washer	-----
	Microswitch Package	EC70-172A	31	Cutter Adjusting Screw	-----
10	Screw (4)	-----	32	Sleeve	-----
11	Screw (2)	-----	33	Spring	-----
12	Scatter Preventing Cover	EC70-94	34	Gear Case	EC70-37
13	Screw/Washer	-----	35	Washer	EC70-38
14	Micro Switch	-----	36	Motor Assembly	EC70-50A
15	Switch Plate	-----	37	Resistor	EC70-51
16	Micro Switch	-----	38	Control Assembly	EC70-616
17	Blade		39	Capacitor	EC70-158
	standard	EC70-147		Cord Package	EC70-239A
	for thin wire	EC70-146	40	Cord Assembly	ES60T-UL239
	for hard wire	EC70-145	41	Screw/Washer	-----
	for resin	EC70-144	42	Ground Wire	-----
18	Bearing	EC70-149	43	Insulator	EC70-245
19	Cam Assembly	EC70-150	44	Penetration Prevention Cover (Package of 5)	EC70-94
20	Stop Ring	EC70-28	45	Sleeve (Package of 5)	EC70-174
21	Gear Head	EC70-216	*	Hardware Package	EC70-HWP
22	Gear Base	EC70-108			
23	Gear (6)	EC70-17			

* Not illustrated.

+ Included in Hardware Package.

NOTES

NOTES

