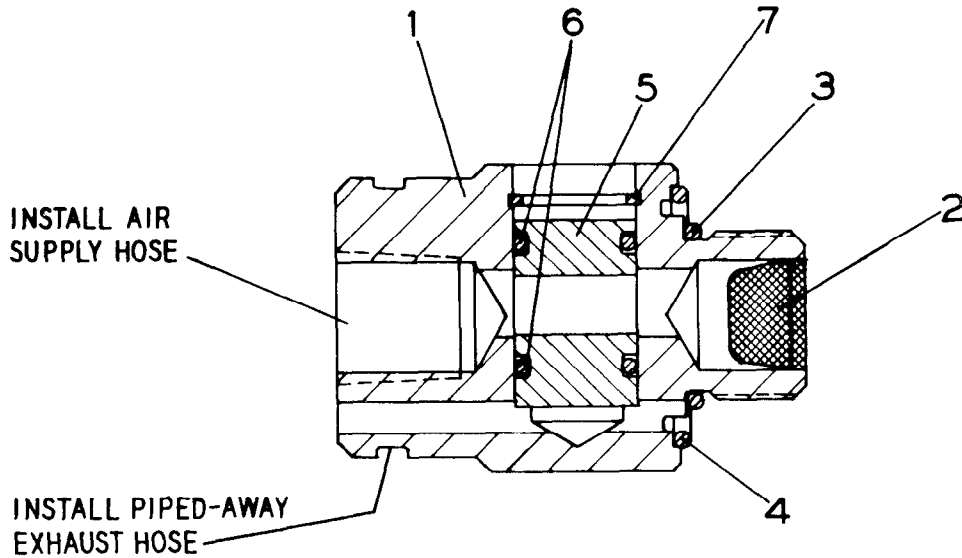


INSTALLATION AND MAINTENANCE OF NO. LG1-A1015 SPEED CONTROL/PIPED-AWAY EXHAUST KIT



(Dwg.TPD 1193)

PART NUMBER FOR ORDERING

1	Control Housing	LG1-1015
2	Inlet Screen	R1602-61
3	O-ring (small)	85H-167
4	O-ring (large)	WWV100A1-43
5	Control Valve	LG1-916
6	Valve O-ring (2)	CE110-210
7	Retaining Ring	LG1-917
*	Exhaust Hose	3RL-284

* Not illustrated.

NOTE: The LG1-A1015 Speed Control/Piped-Away Exhaust Kit is a combination air inlet bushing and speed control/piped-away exhaust kit. It replaces the inlet bushing supplied with the tool in order to obtain speed control/piped-away exhaust capability.

(Over)

Refer All Communications to the Nearest
Ingersoll-Rand Office or Distributor.
© Ingersoll-Rand Company 1989
Printed in U.S.A.

INGERSOLL-RAND®
PROFESSIONAL TOOLS

INSTALLATION AND OPERATION

1. Remove the inlet bushing which was supplied with the tool.
2. If the Inlet Screen (2) is not installed into the Control Housing (1), install it as shown in the illustration.
3. Apply O-ring Lubricant to the small O-ring (3) and install the O-ring over the threaded end of the Control Housing and into the groove.
4. Apply O-ring Lubricant to the large O-ring (4) and place it onto the Control Housing as shown in the illustration.
5. Screw the Control Housing into the threaded end of the tool housing and tighten the Control Housing to 20 to 25 ft-lb (27 to 34 N m) torque.
6. Slide the Exhaust Hose over the air supply hose, small inner ribbed end trailing.
7. Thread the air supply hose nipple into the Control Housing and tighten securely.
8. Stretch the small end of the Exhaust Hose over the Control Housing so that the inner rib of the hose snaps into the groove of the Control Housing.
9. To adjust the air flow and speed of the tool, insert a screwdriver into the slot of the Control Valve and gradually turn the Valve in either direction. For maximum air flow, align the valve screwdriver slot parallel to the threaded ends of the Control Housing.

MAINTENANCE

NOTICE

Do not remove the Control Valve (5) unless a new set of Valve O-rings is on hand. Removal could damage the O-rings.

If the Control Valve O-rings (6) need to be replaced, proceed as follows:

1. Using retaining ring pliers, remove the Retaining Ring (7).
2. Tap the Control Housing on a workbench, so that the slotted Control Valve comes up flush with the housing surface. Using a pointed tool inserted into either end of the Control Valve, pry the Valve upward and remove it from the Control Housing.
3. Remove the two O-rings.
4. Apply O-ring Lubricant to the new Valve O-rings and install them into the grooves of the Control Valve.
5. Insert the Control Valve into the valve hole of the Control Housing, slotted end facing upward, and install the Valve just below the retaining ring groove.
6. Using retaining ring pliers, install the Retaining Ring into the groove. **Important:** Make sure the Retaining Ring is firmly seated into the retaining ring groove of the Control Housing.