

## 8512/WS450 1/2" IMPACTOOL MODEL C

### WARNING

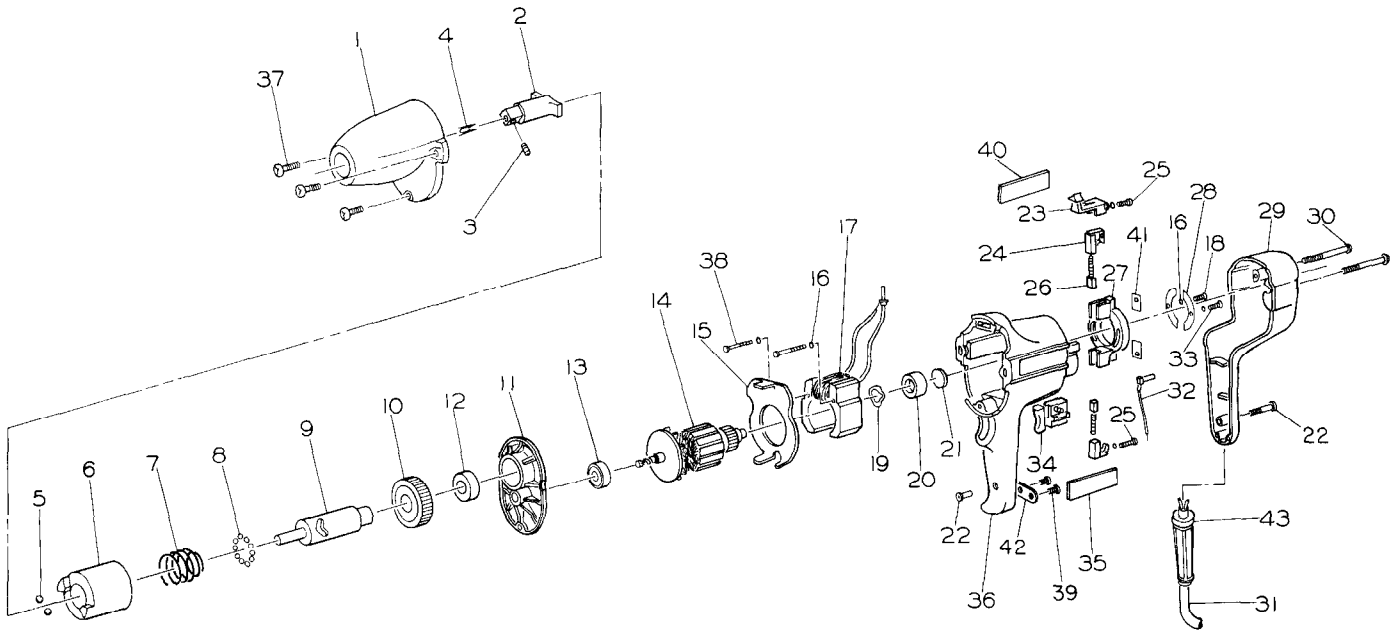
When using electric tools, basic safety precautions should always be followed to reduce risk of fire, electric shock, and personal injury. (See Form M-2549).

Use only Impact Wrench Sockets and Accessories on this Impactool. Do not use hand sockets and accessories.

Electrical repairs should be attempted only by authorized trained repairmen. Consult your service center listing for nearest Ingersoll-Rand Authorized Service Center.

For Operating Instructions and Maintenance refer to Instruction Manual M-2549.

Notice: The use of other than genuine Ingersoll-Rand replacement parts may result in decreased tool performance and increased maintenance, and may invalidate all warranties.



(Dwg. TPB831)

PART NUMBER FOR ORDERING

PART NUMBER FOR ORDERING

1	Hammer Case Assembly . . . . .	5796P1	24	Brush Holder Assembly . . . . .	35553-MA
2	Anvil Assembly . . . . .	32286	25	Screw (2) . . . . .	104762-M
3	Socket Retainer . . . . .	5UHD-715	26	Brush and Spring . . . . .	206037
4	Socket Retainer Plunger Spring . . . . .	5UHD-718	27	Rocker Ring . . . . .	33435
	Hammer Assembly . . . . .	33431	28	Contact . . . . .	33434
5	Steel Ball (2) . . . . .	4U-722	29	Handle Assembly . . . . .	33426-02
6	Hammer . . . . .	33416-01	*	Shield . . . . .	29835
7	Spring . . . . .	29872	*	Plunger . . . . .	29833
8	Steel Ball (23) . . . . .	2U-696	*	Detent Spring . . . . .	29834
9	Shaft . . . . .	33415-01	30	Screw (2) . . . . .	200362
10	Spindle Gear . . . . .	29877	31	Cord . . . . .	203199
11	Separator Assembly . . . . .	200988	32	Lead Assembly . . . . .	29859-MA
12	Spindle Bearing . . . . .	29874	33	Screw . . . . .	103757-M
13	Ball Bearing . . . . .	AG210-24Z	34	Switch . . . . .	201718
14	Armature . . . . .	200981-01	35	Logoplate . . . . .	205054
15	Baffle . . . . .	33432-02	36	Frame Assembly . . . . .	50046-MA
16	Lock Washer (6) . . . . .	103826	37	Screw (3) . . . . .	104809-M
17	Field Assembly . . . . .	33619-MA	38	Screw (2) . . . . .	104763-M
18	Screw . . . . .	103757-M	39	Screw (2) . . . . .	8049-667M
19	Washer . . . . .	103789	40	Nameplate . . . . .	205668-M
20	Sleeve Bearing . . . . .	29867	41	Contact Plate (2) . . . . .	29863
21	Felt . . . . .	104368	42	Strap . . . . .	103217
22	Nut Assembly . . . . .	27306-A	43	Cord Guard . . . . .	28051-01
23	Lever Assembly . . . . .	29860	*	Decal (Forward-Reverse) . . . . .	203632

\* Not illustrated.