

# **PARTS LIST**

**For**

**Paving Breaker**

**Models: PB85A & PB85AS**

**INGERSOLL-RAND**<sup>®</sup>  
**CONSTRUCTION & MINING**

Ingersoll-Rand Company  
Rock Drill Division  
7500 Shadwell Drive  
Roanoke, Va. 24019  
U.S.A.

**Refer All Communications To The  
Nearest Address Listed On The Back Cover**

## Warranty

Ingersoll-Rand, through its distributor, warrants that each item of equipment manufactured by it and delivered hereunder to the initial user to be free of defects in material and workmanship for a period of three (3) months from initial operation or six (6) months from the date of shipment to the initial user, whichever first occurs.

With respect to the following types of equipment, the warranty period enumerated will apply in lieu of the foregoing warranty period.

- A. Aftercoolers, Drill Mountings and Klemm Rotary Heads – The earlier of six (6) months from initial operation or nine (9) months from date of shipment to the initial user.
- B. Portable Compressors, Portable Generator Sets (GENSET), and Portable Light Towers – The earlier of twelve (12) months from shipment to, or the accumulation of 2,000 hours of service by, the initial user.
- C. All Compressor Air Ends, GENSET Generators and Paving Breakers – The earlier of twenty-four (24) months from shipment to, or the accumulation of 4,000 hours of service by, the initial user. For Air Ends, the warranty against defects will include replacement of the complete Air End, provided the original Air End is returned assembled and unopened.
- D. Pavers, Forklifts, Landfill Machines, Milling Machines, Pedestrian Compactors (including baseplates, upright and walk behinds) and Rotary Drills – The earlier of (6) months from shipment to, or the accumulation of 1,000 hours of service by, the initial user.
- E. Jackhammers and Self-Propelled Compactors – The earlier of twelve (12) months from shipment to, or the accumulation of 1,000 hours of service by, the initial user.

- F. Downhole Drills – In lieu of the repair or replacement of defective parts Ingersoll-Rand may elect to issue full or partial credit toward the purchase of a new part. The extent of credit issued will be determined by prorating against the normal service life of the part in question.

- G. Spare Parts (excluding downhole drills) – Three (3) months from date of shipment.

Ingersoll-Rand will provide a new part or repaired part, at its election, in place of any part which is found upon its inspection to be defective in material and workmanship during the period prescribed above. Such part will be repaired or replaced without charge to the initial user during normal working hours at the place of business of an Ingersoll-Rand distributor authorized to sell the type equipment involved or other establishment authorized by Ingersoll-Rand. User must present proof of purchase and date at the time of exercising warranty.

The warranty does not apply to failures occurring as a result of abuse, misuse, negligent repairs, corrosion, erosion and normal wear and tear, alterations or modification made to the product without express written consent of Ingersoll-Rand; or failure to follow the recommended operating practices and maintenance procedures as provided in the product's operating and maintenance publications.

Accessories or equipment furnished by Ingersoll-Rand, but manufactured by others, including, but not limited to, engines, tires, batteries, engine electrical equipment, hydraulic transmissions, carriers, shall carry whatever warranty the manufacturers have conveyed to Ingersoll-Rand and which can be passed on to the initial user.

**THIS WARRANTY IS IN LIEU OF ALL OTHER WARRANTIES (EXCEPT OF TITLE), EXPRESSED OR IMPLIED, AND THERE ARE NO WARRANTIES OF MERCHANTABILITY OR OF FITNESS FOR A PARTICULAR PURPOSE.**

## Limitation of Liability

The remedies of the user set forth under provisions of warranty outlined above are exclusive and the total liability of Ingersoll-Rand or its distributors with respect to this sale or the equipment and service furnished hereunder, in connection with the performance or breach thereof, or from the sale, delivery, installation, repair or technical direction covered by or furnished under this sale. Whether based on contract, warranty, negligence, indemnity, strict liability or otherwise shall not exceed the purchase price of the unit of equipment upon which such liability is based.

Ingersoll-Rand, its supplier(s) and its distributors shall in no event be liable to the user, any successors in

interest or any beneficiary or assignee relating to this sale for any consequential, incidental, indirect, special or punitive damages arising out of this sale or any breach thereof, or any defects in, or failure of, or malfunction of the equipment under this sale whether based upon loss of use, lost profits or revenue, interest, lost goodwill, work stoppage, impairment of other goods, loss by reason of shutdown or non-operation, increased expenses of operation of the equipment, cost of purchase of replacement power or claims of users or customers of the user for service interruption whether or not such loss or damage is based on contract, warranty, negligence, indemnity, strict liability or otherwise.

**ORDERING INSTRUCTIONS****When ordering service parts, please specify:**

1. The **NAME** of each part as listed.
2. The **PART NUMBER** as listed or stamped on the part.
3. The **SERIAL NUMBER** of the equipment.

DO NOT use illustration numbers when ordering service parts. To save time, send all orders for parts to the nearest branch office or agent. IF IT IS NECESSARY TO SEND ANY PART OF THIS EQUIPMENT TO THE FACTORY, INQUIRE AT OUR NEAREST BRANCH OFFICE OR AGENT FOR SPECIAL INSTRUCTIONS. PRODUCT IMPROVEMENT IS A CONTINUING GOAL AT INGERSOLL-RAND. DESIGN AND SPECIFICATIONS ARE SUBJECT TO CHANGE WITHOUT NOTICE OR OBLIGATION.

**RECOMMENDED SERVICE PARTS.**

The service part recommendations are shown in three columns under heading "Recommended Service Parts". Recommendations are given for three (3) classes of installation, based on parts availability and cover one shift operation for one year.

**CLASS 1 (Min.)** – Covers recommended quantities of parts for a single unit where additional parts are ordinarily available from Branch or Dealer stock.

**CLASS 2 (Av.)** – Covers recommended quantities of parts for a single unit where additional parts are not readily available.

**CLASS 3 (Max.)** – Covers recommended quantities of parts for a single unit where maximum protection from major shutdown must be afforded such as an export installation.

The Service Part Recommendations are applicable to machines now being assembled. When parts are ordered for specific machines by serial numbers, it may be necessary to make a few substitutions to ensure supplying parts that will fit the specific machines for which they are intended.

Since we are not familiar with local operation and maintenance conditions, we cannot guarantee that these recommendations include every part which may be required in any given period of time, nor can we warrant that all of these parts will be needed. Generally, however, we are confident that these recommendations will provide reasonably good protection.

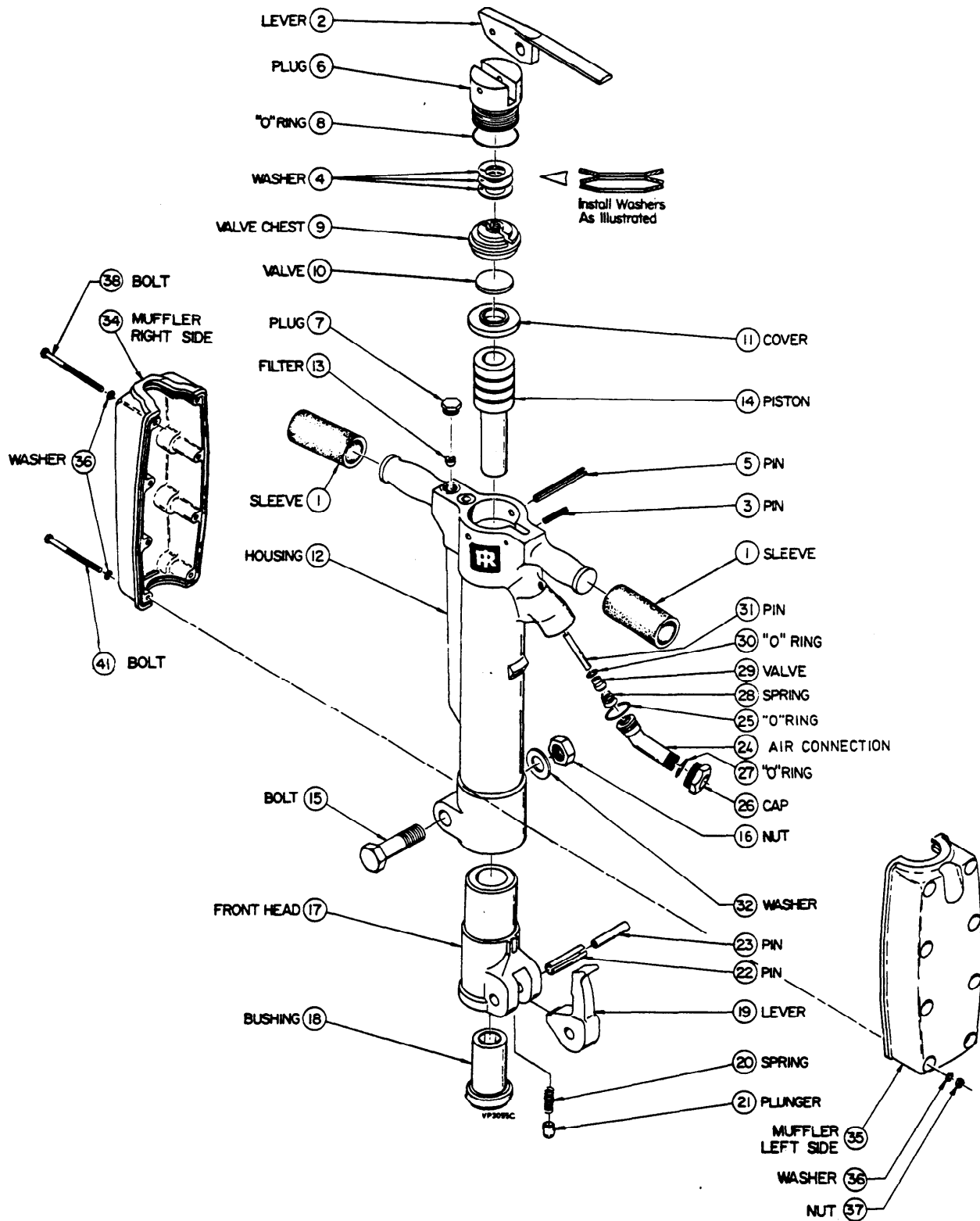
---

**NAME OF ASSEMBLY**  
Components of an assembly  
are indented.

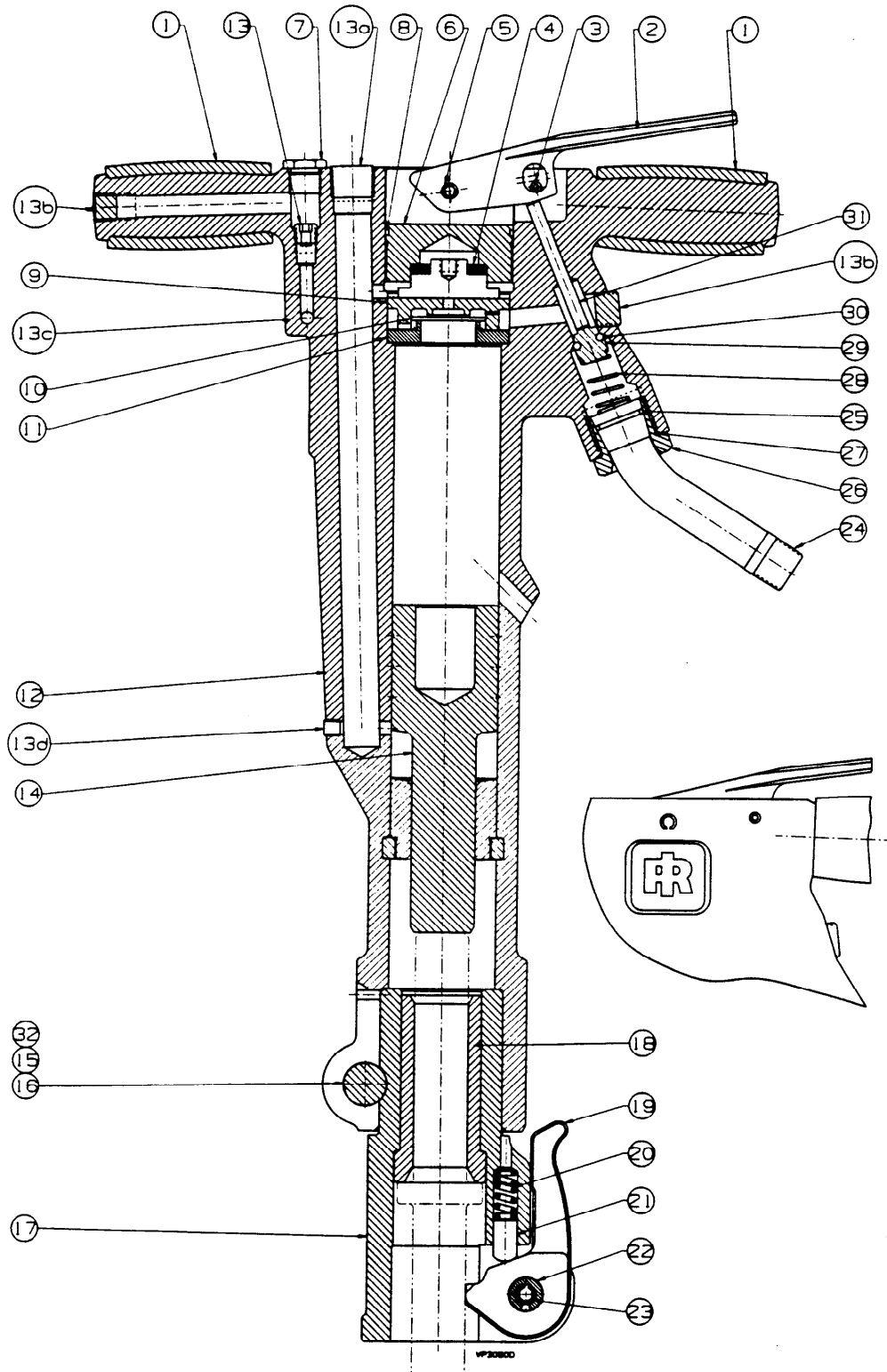
Each column includes the Parts List  
Section Numbers applicable to the assembly.

---

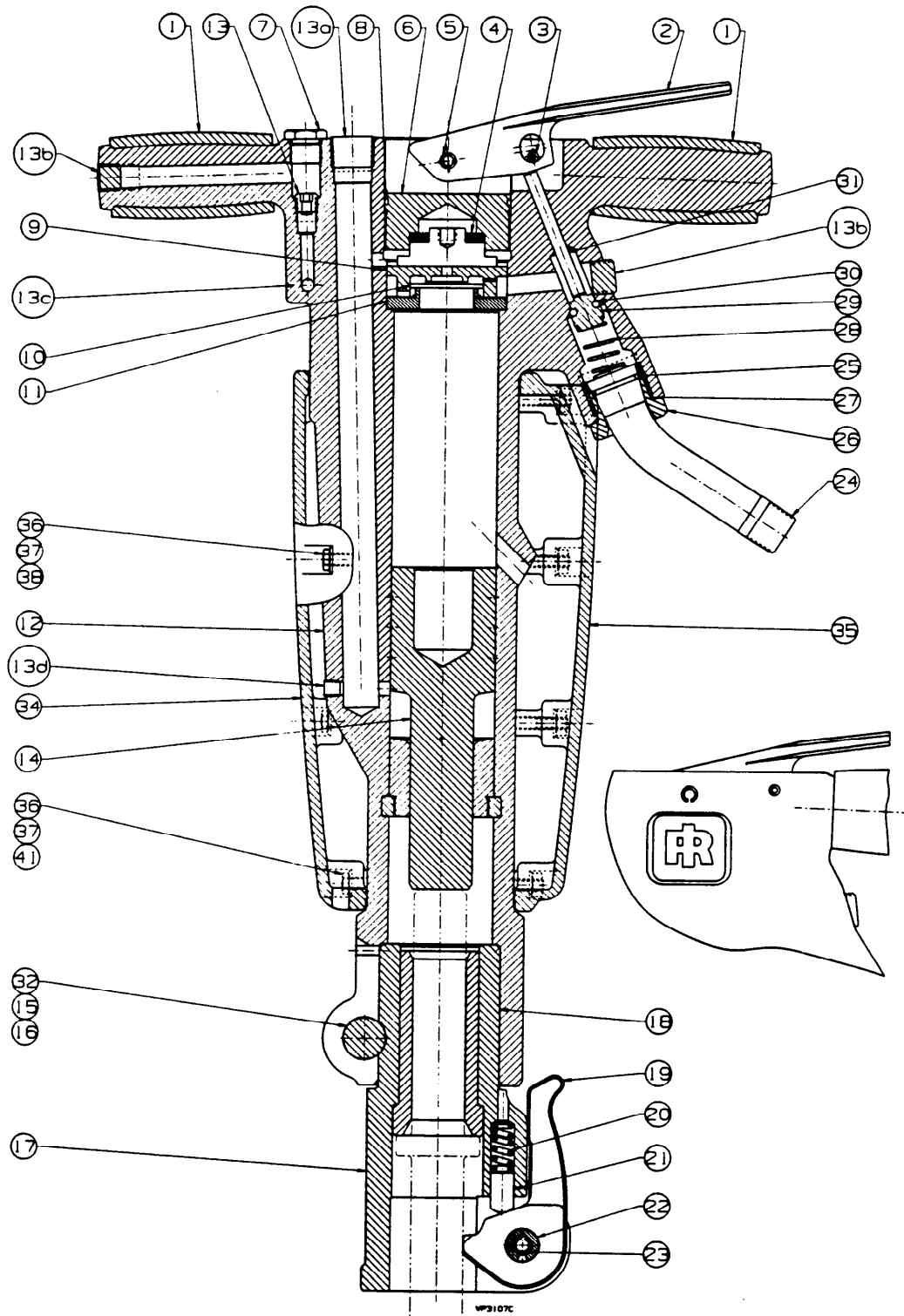
	<b>Manual No.</b>	<b>Section No.</b>
PAVING BREAKERS PB85A & PB85AS .....	PS-5500.18	1
GENERAL INFORMATION .....	PS-5500.18	2



PAVING BREAKERS PB85A & PB85AS - Exploded Illustration  
(For Parts List, refer to Pages 4 & 5)



**PAVING BREAKER PB85A – Sectional Illustration**  
**(For Parts List, refer to Pages 4 & 5)**



**PAVING BREAKER PB85AS – Sectional Illustration**  
**(For Parts List, refer to Pages 4 & 5)**

**PAVING BREAKERS PB85A & PB85AS**  
(For Illustration of parts, refer to Pages 1, 2 & 3)

REF NO.	PART NO.	NAME OF PART Parts indented under an item are included with that item.	QTY.	RECOMMENDED SERVICE PARTS		
				CLASS		
				1 Min.	2 Av.	3 Max.
	#	<b>PAVING BREAKERS PB85A &amp; PB85AS (CONSISTS OF THE FOLLOWING)</b>				
1	51307320	SLEEVE, HANDLE .....	2			
2	51292480	LEVER, THROTTLE .....	1	2	2	4
◆ 3	95213328	PIN, ROLL .....	1	1	1	1
◆ 4	51307288	WASHER .....	3			
◆ 5	95897229	PIN, ROLL .....	1			
6	51237782	PLUG, HOUSING .....	1	—	1	1
7	51370203	PLUG .....	1	1	1	1
◆ 8	95086336	O-RING .....	1			
9	51237741	CHEST, VALVE .....	1	—	1	1
◆ 10	N.S.S.	VALVE .....	1			
11	51237774	COVER, VALVE .....	1	—	1	1
12	N/A	HOUSING .....	1			
13	51725810	ASSEMBLY, FILTER .....	1	2	3	4
• 13a	95033387	PIPE, PLUG .....	1	—	1	1
• 13b	95033379	PIPE, PLUG .....	1	1	1	1
• 13c	95033353	PIPE, PLUG .....	2	1	1	1
• 13d	95033361	PIPE, PLUG .....	2	—	—	1
14	51351757	PISTON .....	1	1	2	3
15	51378420	BOLT .....	1	—	1	1
16	95471165	NUT .....	1	—	1	1
	51381879	ASSEMBLY, FRONTHEAD .....	1	—	1	1
17	51381861	FRONTHEAD .....	1	—	1	1
18	51306967	BUSHING, FRONTHEAD .....	1	1	1	1
◆◆ 19	N.S.S.	LEVER, STEEL RETAINING .....	1			
◆◆ 20	50019579	SPRING .....	1			
◆◆ 21	50019728	PLUNGER, STEEL RETAINER LEVER .....	1			
◆◆	51792802	KIT, ROLL PIN .....	1	2	2	3
22	N.S.S.	PIN, OUTER ROLL .....	1			
23	N.S.S.	PIN, INNER ROLL .....	1			
24	51361863	CONNECTION, AIR .....	1	1	1	1
◆ 25	95086161	O-RING .....	1			
26	51361798	CAP, AIR CONNECTION .....	1			
◆ 27	95086112	O-RING .....	1			
◆ 28	51368561	SPRING .....	1			
◆	51719615	ASSEMBLY, VALVE .....	1			
29	N.S.S.	VALVE .....	1			
30	51717239	O-RING .....	1			
◆ 31	51716983	PIN .....	1			
32	51378438	WASHER .....	1			
++ 34	N.S.S.	MUFFLER, RS (PB85AS ONLY) .....	1			
++ 35	N.S.S.	MUFFLER, LS (PB85AS ONLY) .....	1			
++ 36	95064655	WASHER (PB85AS ONLY) .....	16			
++ 37	95467924	NUT (PB85AS ONLY) .....	8			
++ 38	95838967	BOLT (PB85AS ONLY) .....	6			
++ 41	95838942	BOLT (PB85AS ONLY) .....	2			
(CONTINUED)						

**N.S.S. NOTICE:** THESE PARTS ARE NOT SOLD SEPARATELY (N.S.S.), THESE PARTS ARE PACKAGED IN KITS FOR CUSTOMER CONVENIENCE AND COST SAVINGS.

◆ **NOTICE:** THESE PARTS ARE INCLUDED IN **TUNE-UP KIT 51613404**.

◆◆ **NOTICE:** THESE PARTS ARE INCLUDED IN **STEEL RETAINER KIT 51358261**.

# **NOTICE:** REFER TO SECTION 2, FOR GENERAL INFORMATION ON ENGLISH & EUROPEAN MODELS AND THEIR PART NUMBERS.

++ **NOTICE:** THESE PARTS ARE INCLUDED IN **MUFFLER KIT 51726796**.

• **NOTICE:** THESE PARTS ARE NOT ILLUSTRATED ON EXPLODED ILLUSTRATION ON PAGE 1.

N/A : NOT AVAILABLE.



**PAVING BREAKERS PB85A & PB85AS (Cont.)**  
 (For illustration of parts, refer to Pages 1, 2 & 3)

REF NO.	PART NO.	NAME OF PART Parts indented under an item are included with that item.	QTY.	RECOMMENDED SERVICE PARTS		
				CLASS		
				1 Min.	2 Av.	3 Max.
	#	<b>PAVING BREAKERS PB85A &amp; PB85AS (Cont.)</b> (CONSISTS OF THE FOLLOWING)				
		<b>OPTIONS</b> (Furnished only when specially ordered)				
	51381887	ASSEMBLY, FRONTHEAD (FOR 1-1/8 in. HEX. X 6 in. LONG [28mm Hex. X 152mm LONG] PAVING BREAKER SHANK) .....	1			
	03579927	LUBRICATOR (16LUB16) .....	1			
		<b>AVAILABLE KITS</b>				
	51613404	KIT, TUNE-UP .....	1	2	3	4
	51358281	KIT, STEEL RETAINER .....	1	2	3	4
	51728798	KIT, MUFFLER .....	1	1	2	3
		<b>LUBRICATION</b> (Furnished only when specially ordered)				
	51378701	ROCK DRILL OIL (LIGHT) .....	1 GAL			
	51378727	ROCK DRILL OIL (LIGHT) .....	5 GAL			
	51378743	ROCK DRILL OIL (LIGHT) .....	55 GAL			
	51378693	ROCK DRILL OIL (MEDIUM) .....	1 GAL			
	51378719	ROCK DRILL OIL (MEDIUM) .....	5 GAL			
	51378735	ROCK DRILL OIL (MEDIUM) .....	55 GAL			



**GENERAL.**

The Paving Breaker Models PB85A & PB85AS (paving breaker) are heavy-duty tools that provide maximum performance at minimum cost. They are designed for general paving breaker work where a heavy-duty paving breaker is necessary. With the two-piece design (breaker housing and fronthead) the paving breakers are easier to assemble and disassemble.

**STANDARD EQUIPMENT.**

Each standard paving breaker is a complete unit ready to be put into service with proper lubrication. There are no extra parts or special fittings required.

The standard paving breaker has a fronthead bushing 51306967, for a 1-1/4 in. Hex. x 6 in. long (32 mm Hex. x 152 mm long) paving breaker shank.

**# NOTICE****PAVING BREAKER COMBINATIONS.**

The following list shows the models and part numbers for all available paving breaker combinations:

**1) Standard:**

a) PB85A-STD (51357069). This paving breaker includes a fronthead with bushing (51306967) which accommodates a 1-1/4 in. Hex. x 6 in. long (32mm Hex. x 152mm long) paving breaker shank.

b) PB85AS-STD (51364396). This paving breaker includes a fronthead with bushing (51306967) which accommodates a 1-1/4 in. Hex. x 6 in. long (32mm Hex. x 152mm long) paving breaker shank, and also includes a muffler.

**2) Optional:**

a) PB85A-OPT-A (51359826). This paving breaker includes a fronthead with bushing (51307387) which accommodates a 1-1/8 in. Hex. x 6 in. long (28mm Hex. x 152mm long) paving breaker shank.

b) PB85A-OPT-D (51620094). This paving breaker includes a fronthead with bushing (51306967) which accommodates a 1-1/4 in. Hex. x 6 in. long

(32mm Hex. x 152mm long) paving breaker shank.

**NOTICE:** This paving breaker is for European customers only.

c) PB85A-OPT-E (51620102). This paving breaker includes a fronthead with bushing (51307387) which accommodates a 1-1/8 in. Hex. x 6 in. long (28mm Hex. x 152mm long) paving breaker shank.

**NOTICE:** This paving breaker is for European customers only.

d) PB85AS-OPT-A (51364404). This paving breaker includes a fronthead with bushing (51307387) which accommodates a 1-1/8 in. Hex. x 6 in. long (28mm Hex. x 152mm long) paving breaker shank.

e) PB85AS-OPT-D (51620078). This paving breaker includes a fronthead with bushing (51306967) which accommodates a 1-1/4 in. Hex. x 6 in. long (32mm Hex. x 152mm long) paving breaker shank.

**NOTICE:** This paving breaker is for European customers only.

f) PB85AS-OPT-E (51620086). This paving breaker includes a fronthead with bushing (51307387) which accommodates a 1-1/8 in. Hex. x 6 in. long (28mm Hex. x 152mm long) paving breaker shank.

**NOTICE:** This paving breaker is for European customers only.

**OPTIONAL MUFFLER KIT.**

An add-on muffler kit (for paving breakers without a muffler) is available and will be furnished when specially ordered. The muffler reduces paving breaker noise levels without hindering breaker performance.

**LUBRICATION.**

A high-quality rock drill oil conforming to the physical and chemical properties outlined in the instruction manual, must be added to the operating air supply to lubricate the moving parts of the paving breakers. The method of lubrication depends on actual operating conditions and customer preference:

## **▲CAUTION**

THE LUBRICATING OIL RESERVOIR BUILT INTO THE PAVING BREAKER HANDLE MUST BE CHECKED EVERY TWO HOURS AND REFILLED AS NECESSARY.

a. The lubricating-oil reservoir built in the handle will provide proper lubrication. It must be checked every two hours and refilled as necessary.

b. For intermittent operation with an air-supply hose no longer than 50 ft. (15 m), a compressor-mounted lubricator can be used.

c. For continuous operation during an eight-hour shift, an Ingersoll-Rand 16LUB16, or other constant-feed air line lubricator, should be installed in the air-supply line about 11.5 ft. (3.5 m) from the breaker. The 16LUB16 has a capacity of 1 U.S. pint (0.47 liters) and will be furnished when specially ordered.

## **NOTICE**

Refer to Form 4996 "Instruction Manual For Paving Breaker Models PB85A & PB85AS" for maintenance instructions.

# Worldwide Ingersoll-Rand sales offices

## U.S.A.

### U.S. CEG OFFICES

**Allentown, PA** 18103-9553  
954 Marcon Blvd.  
215/266-9553

**Boston, MA** 02125  
33 Locust Street  
617/288-8988

**Casper, WY** 82601  
3273 N. I-25 Frontage Road  
307/237-4259

**Chattanooga, TN** 37408  
2001 Polk Street  
615/266-6739

**Denver, CO** 80207  
5805 East 39th Ave.  
303/399-1580

**East Hanover, NJ** 07936  
98 Route #10  
201/887-1212

**Elkridge, MD** 21227  
5681 Main Street  
301/796-3200

**Houston, TX** 77001  
2210 McAllister  
713/681-9221

**Knoxville, TN** 37922  
111 Center Park Drive  
Suite 900  
615/690-6551

**Mid-America**  
10401 Linn Station Rd.  
Suite 105 - Triad North  
Louisville, KY 40223  
502/426-6661

**Madison, WI** 53716  
2421 South Stoughton Road  
608/223-0323

**Milwaukee, WI** 53225  
12311 West Silver Springs Dr.  
414/461-7810

**Nashville, TN** 37229  
310 S. Second St.  
615/254-1811

**New Cumberland, PA** 17070  
Exit 15 on Rt. 83  
4 miles South of Harrisburg  
717/938-1441

**New England**  
300 Turnpike Rd. -Route 9  
Southboro, MA 01772  
508/481-1350

**Philadelphia**  
Route 309  
Montgomeryville, PA 18936  
215/855-9990

**Phoenix, AZ** 85007  
820 N. 17th Ave.  
602/258-6493

**Pico Rivera, CA** 90660  
5211 Paramount Blvd.  
213/948-3801

**Portland, OR** 97214  
240 South East Clay Street  
503/232-0151

**Sacramento, CA** 95836  
1851 Bell Avenue  
916/641-1994

**San Leandro, CA** 94577  
1944 Marina Blvd.  
415/357-9131

**Scranton, PA** 18505  
805 Davis St.  
717/346-3885

**Seattle, WA** 98168  
11222 E. Marginal Way, S.  
206/762-7400

## U.S. CEG FACTORIES

### ROCK DRILLS

**Rotary blasthole rigs**  
Ingersoll-Rand Co.  
Rotary Drill Division  
2100 N. First St.  
Garland, TX 75040  
214/495-8181

**Downhole Drills and Bits; Pneumatic and Hydraulic Crawler Drills; Breakers and Jackhammers.**

Ingersoll-Rand Co.  
Rock Drill Division  
7500 Shadwell Drive  
Roanoke, VA 24019  
703/362-3321

### COMPACTORS, PAVING MILLERS, ASPHALT PAVERS AND FORKLIFTS

Ingersoll-Rand Co.  
Road Machinery Division  
Ingersoll Drive  
Shippensburg, PA 17257  
717/532-9181

### UNDERGROUND EQUIPMENT

**Roadheaders; diesel-powered production and utility equipment (scoops, haul dumps, etc.)**  
Contact Rock Drill Division  
Roanoke, VA

**Split Set rock stabilizers**  
Simmons-Rand Co.  
Split Set Division  
Suite 300  
100 Thanet Circle  
Princeton, NJ 08540-3662  
609/921-8688

### AIR COMPRESSORS

**Portable compressors, Generator Sets and Light Plants**  
Ingersoll-Rand Co.  
Portable Compressor Division  
P.O. Box 868  
501 Sanford Ave.  
Mocksville, NC 27028  
704/634-3561

**Small Compressor Plant**  
Ingersoll-Rand Co.  
101 Industrial Drive  
Campbellsville, KY 42718  
502/465-3511

### Centrifugal compressors (Centac)

Ingersoll-Rand Co.  
Centrifugal Compressor Division  
Route 45  
Mayfield, KY 42066  
502/247-8640

### Reciprocating and rotary-screw compressors

Ingersoll-Rand Co.  
Air Compressor Group  
P.O. Box 1600  
800A Beaty St.  
Davidson, NC 28036  
704/892-7100

### PUMPS

#### Engineered centrifugal pumps

Ingersoll-Rand Co.  
P.O. Box 486  
Phillipsburg, NJ 08865  
201/859-7000

### Reciprocating pumps and standard centrifugal pumps

Ingersoll-Rand Co.  
P.O. Box 656  
Allentown, PA 18105  
215/433-6411

### Vertical turbine pumps

Ingersoll-Rand Co.  
Vertical Turbine Pump Division  
Hastings, NE 68901  
402/463-1306

### TOOLS, WINCHES

Ingersoll-Rand Co.  
Power Tool Division  
P.O. Box 1776  
Liberty Corner, NJ 07938  
201/647-6000

### LIQUID/SOLID SEPARATORS

Ingersoll-Rand Co.  
Imcco Division  
150 Burke St.  
Nashua, NH 03061  
603/882-2711

## CANADA

**Surface and underground equipment Tools and industrial equipment**

Ingersoll-Rand Canada Inc.  
2360 Millrace Court  
Mississauga, Ontario L5N1W2  
(1)416/858-8480

Ingersoll-Rand Canada, Inc.  
2250 Hymus Blvd  
Dorval, Quebec H9P1J9  
(1) 514/683-9157

## MEXICO

### All equipment

Ingersoll-Rand, S.A. de C.V.  
Boulevard Centro  
Industrial #11  
Fracc. Industrial  
Puente de Vigas  
Tlalnepantla,  
54090 Edo. de Mexico  
Mexico  
52 (5) 390-40-21  
52 (5) 390-24-11

## EUROPE

**Austria - Vienna**  
43 (222) 83-05-250

**Belgium - Brussels**  
32 (02) 216-99-95

**France - Trappes**  
33 (3) 050-61-10

**Germany - Ratingen**  
49 (2102) 48090

**\*Italy - Milano**  
39 (02) 950561

**Netherlands - Zoeterwoude**  
31 (071) 452200

**Norway - Oslo**  
47 (02) 39-15-26

**Spain - Madrid**  
34 (9) 1-671-07-00

**Sweden - Spanga**  
46 (08) 750-58-20

**United Kingdom - London**  
44 (01) 584-5070

\*Also for Bulgaria, Czechoslovakia, Hungary, Poland, Rumania, USSR, Yugoslavia.

## SOUTH AMERICA

**USA, Miami, Florida**  
1 (305) 599-0500

**Chile - Santiago**  
56 (2) 41-198

**Colombia - Bogota**  
57 (2) 347962

**Venezuela - Caracas**  
58 (2) 239-9369

## AFRICA-MIDDLE EAST

**Egypt - Cairo**  
(02)341-5190

**South Africa - Alrode**  
27 (011) 864-3930

## ASIA-PACIFIC

**Australia-Melbourne**  
61-(3) 794-1611

**Hong Kong**  
852 (5) 270183

**India-Bombay**  
91 (22) 4936765

**Japan - Tokyo**  
81 (3) 403-0841/7

**Korea - Seoul**  
82 (2) 776-2541

**New Zealand - Auckland**  
64 (9) 885096

**Philippines - Manila**  
63 (2) 89-85-06/08

**Singapore**  
(65) 8611555