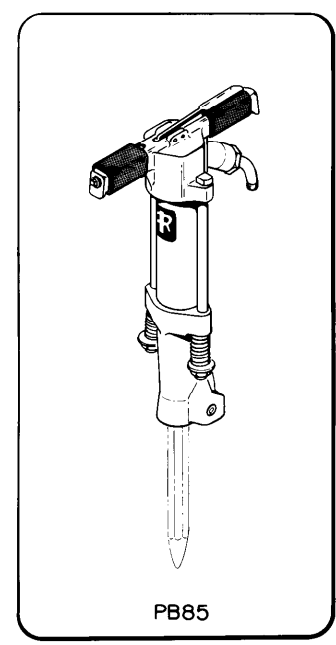
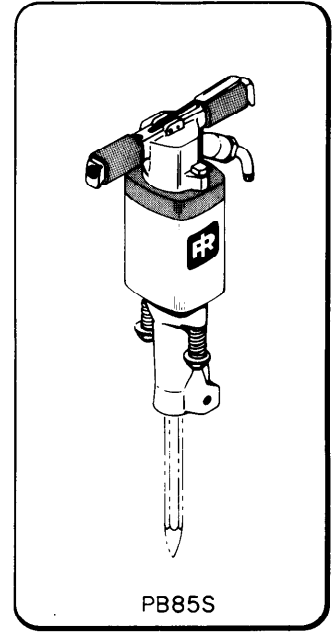
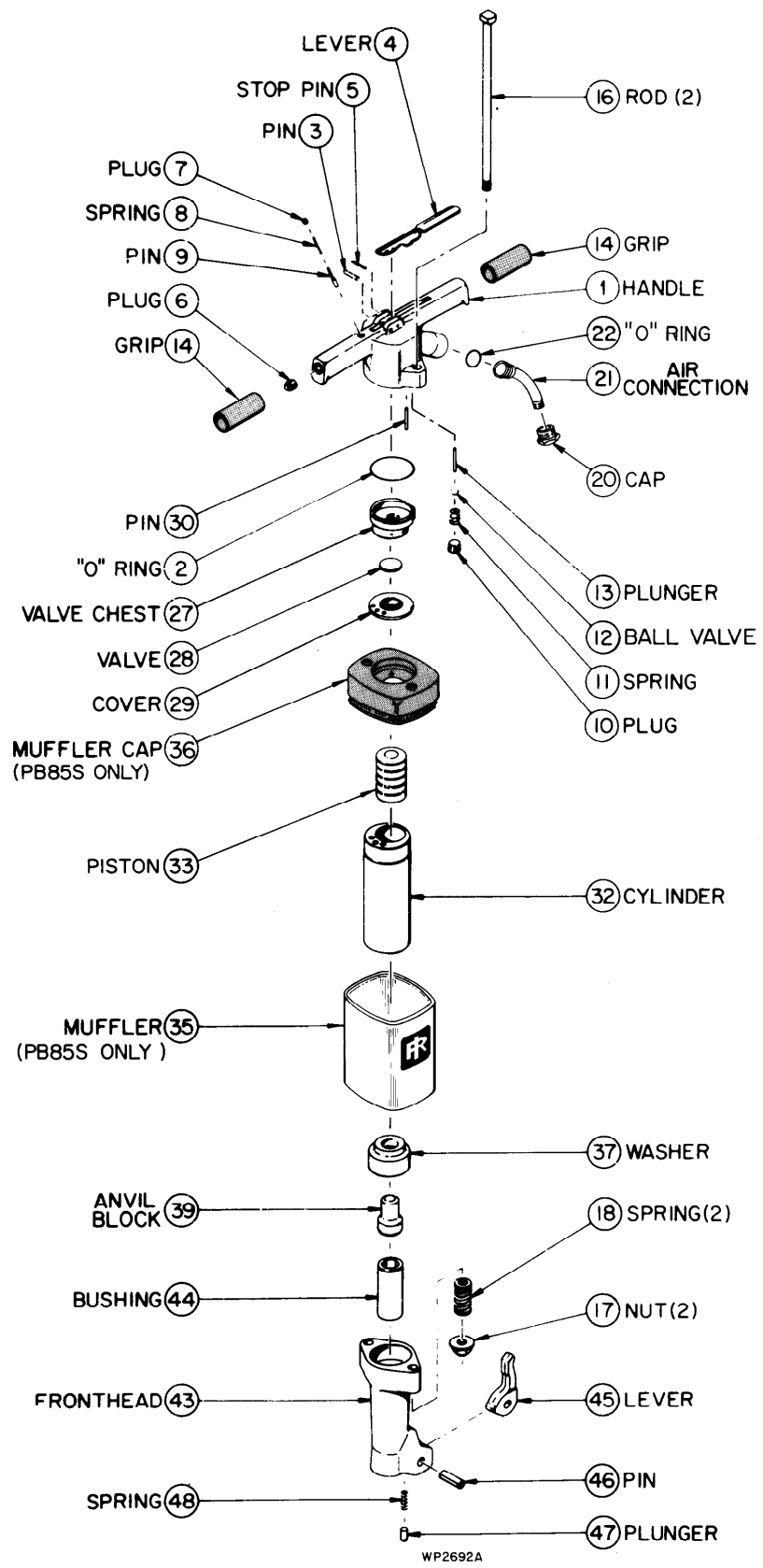
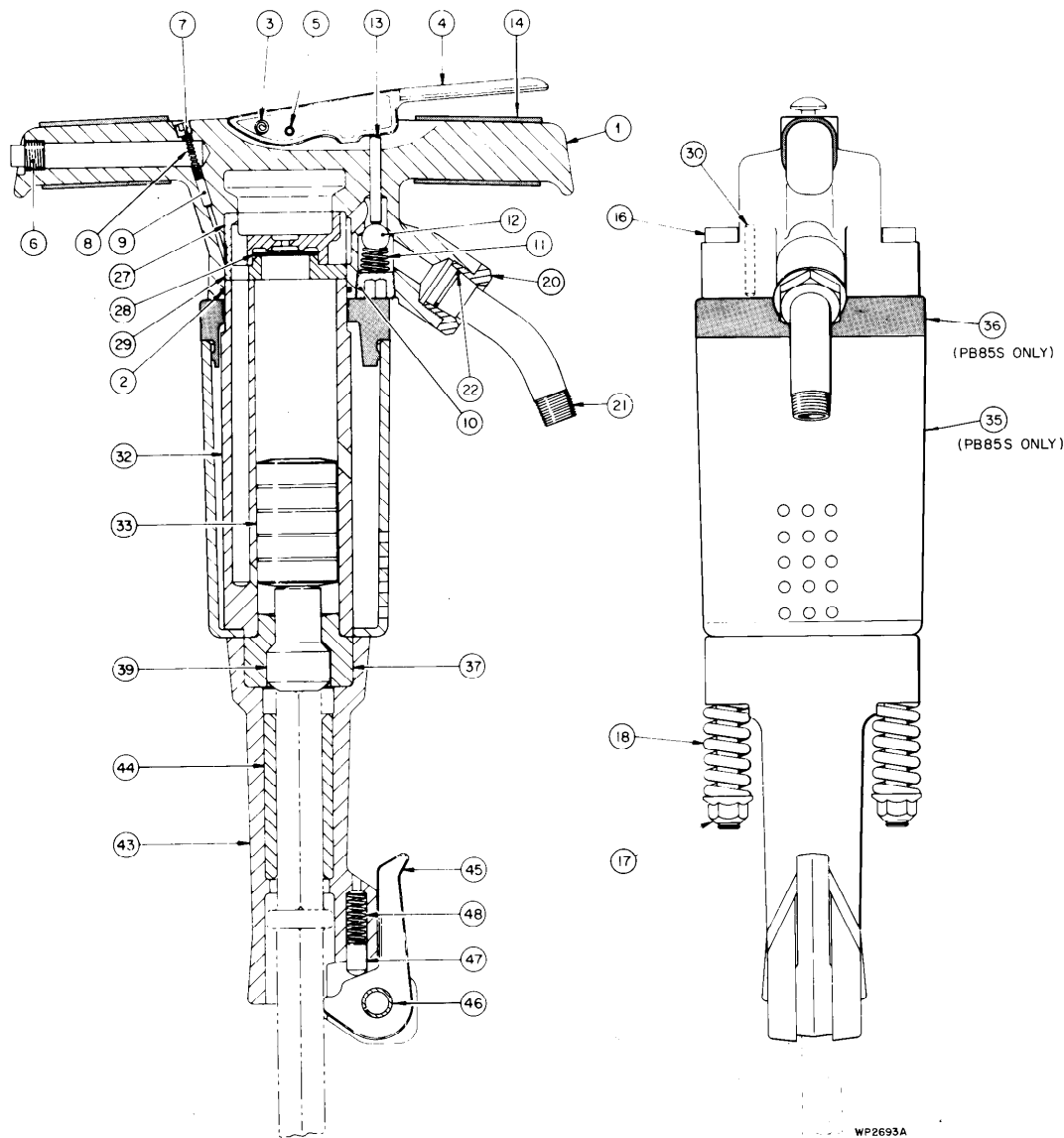


51215044



© 1985 Ingersoll-Rand Company
Printed in U.S.A.

WP2692A



PB85 AND PB85S PAVING BREAKERS

RECOMMENDED SPARES

The spare part recommendations are shown in three columns under heading "Recommended Spares". Recommendations are given for three (3) classes of installation, based on spare parts availability and cover one shift operation for one year.

CLASS 1 (Min.) - Covers recommended quantities of spares for a single unit where additional spare parts are ordinarily available from Branch or Dealer stock.

CLASS 2 (Av.) - Covers recommended quantities of spare parts for a single unit where additional spare parts would not be readily available.

CLASS 3 (Max.) - Covers recommended quantities of spare parts for a single unit where maximum protection from major shutdown must be afforded such as an export installation.

The Spare Part Recommendations are applicable to machines now being assembled. When spares are ordered for specific machines by serial numbers, it may be necessary to make a few substitutions to insure supplying parts that will fit the specific machines for which they are intended.

Since we are not familiar with local operation and maintenance conditions, we cannot guarantee that these recommendations include every part which may be required in any given period of time, nor can we warrant that all of these parts will be needed. Generally, however, we are confident that these recommendations will provide reasonably good protection.

When ordering spares, please give (1) the NAME of the part as listed, (2) the PART NO. as listed and stamped on the part, and (3) the SERIAL NUMBER of the machine.

DO NOT use illustration numbers when ordering spare parts. To save time send all orders for parts to the nearest branch office or agent.

WHEN NECESSARY TO SEND ANY PART OF THIS MACHINE TO THE FACTORY, INQUIRE AT OUR NEAREST BRANCH OFFICE FOR SPECIAL INSTRUCTIONS.

REF. NO.	P885	P885S	NAME OF PART Parts indented under an item are included with that item	QTY.	RECOMMENDED SPARES		
					CLASS		
					1 Min.	2 Av.	3 Max.
HANDLE AND PARTS							
1	*50991447	X	HANDLE _____	1			
2	95086716	X	O-RING, HANDLE _____	1	-	1	1
3	*50997576	X	PIN, THROTTLE VALVE LEVER _____	1			
4	*50997485	X	LEVER, THROTTLE VALVE _____	1			
5	50997568	X	STOP PIN, LEVER _____	1			
6	95033619	X	PLUG, HANDLE OIL RESERVOIR _____	1			
7	95049359	X	PLUG, OIL METERING _____	1			
8	50720523	X	SPRING, OIL METERING PLUG _____	1			
9	50720556	X	PIN, OIL METERING _____	1			
10	95267191	X	PLUG, THROTTLE _____	1			
11	50250539	X	SPRING, THROTTLE _____	1	1	1	1
12	50720572	X	BALL VALVE _____	1	1	1	1
13	50720465	X	PLUNGER, THROTTLE _____	1	1	1	1
14	50973312	X	GRIP, HANDLE _____	2			
ASSEMBLY RODS AND PARTS							
16	50775527	X	ASSEMBLY ROD _____	2	-	1	1
17	50951664	X	LOCKNUT, ASSEMBLY ROD _____	2	-	1	1
18	50022631	X	SPRING, ASSEMBLY ROD _____	2			
AIR CONNECTION PARTS							
20	*50028117	X	CAP, AIR CONNECTION _____	1			
	*50997477	X	AIR CONNECTION ASSEMBLY _____	1			
21	*50974013	X	AIR CONNECTION _____	1	-	-	1
22	*95086161	X	O-RING _____	1	-	1	2
VALVE CHEST AND PARTS							
27	50775493	X	CHEST, VALVE _____	1	-	-	1
28	50720515	X	VALVE _____	1	-	-	1
29	50775501	X	COVER, VALVE CHEST _____	1	-	-	1
30	50720499	X	LOCATING PIN _____	1	1	1	1
CYLINDER AND PISTON							
32	51042984	X	CYLINDER _____	1			
33	50402700	X	PISTON _____	1	-	1	1
MUFFLER AND PARTS							
35	NOT USED	51076776	MUFFLER _____	1			
36	NOT USED	51076784	CAP, MUFFLER _____	1			
MISCELLANEOUS PARTS							
37	50775519	X	WASHER, CYLINDER _____	1	-	1	1
39	50997675	X	ANVIL BLOCK _____	1	-	1	1
FRONTHEAD AND PARTS							
	50997709	X	FRONTHEAD ASSEMBLY (STANDARD FOR 31.75mm [1-1/4in.] HEX. PAVING BREAKER SHANK)	1			
43	50997683	X	FRONTHEAD _____	1			
44	50008234	X	BUSHING, FRONTHEAD (STANDARD)	1	-	1	1
45	50997600	X	LEVER, RETAINER _____	1	-	1	1
46	50997584	X	PIN, RETAINER LEVER _____	1	-	-	1
47	50019728	X	PLUNGER, RETAINER LEVER _____	1	-	1	1
48	50019579	X	SPRING, RETAINER LEVER _____	1	-	1	1
	50997691	X	FRONTHEAD ASSEMBLY (OPTIONAL FOR 28.57mm [1-1/8in.] HEX. PAVING BREAKER SHANK)	1			
43	50997683	X	FRONTHEAD _____	1			
44	50008242	X	BUSHING, FRONTHEAD (OPTIONAL)	1	-	1	1
45	50997600	X	LEVER, RETAINER _____	1	-	1	1
46	50997584	X	PIN, RETAINER LEVER _____	1	-	-	1
47	50019728	X	PLUNGER, RETAINER LEVER _____	1	-	1	1
48	50019579	X	SPRING, RETAINER LEVER _____	1	-	1	1

NOTE: THE "X" INDICATES THAT THE PART NUMBER IS THE SAME FOR BOTH MODEL PAVING BREAKERS.

GENERAL INFORMATION

The PB85 and PB85S Paving Breakers are high-quality tools designed for the majority of heavy-duty demolition jobs. They are especially suited to tearing up concrete, asphalt, or stone paving in road construction jobs; tearing down walls, foundations, and floors in general construction and maintenance work; breaking up large rocks and boulders in mines and quarries; and general demolition work in any industry.

The PB85 and PB85S Paving Breakers are identical in construction except that the PB85S is fitted with an integral muffler that reduces the noise level of the breaker and extends its application possibilities.

The PB85 and PB85S Spike Drivers are essentially the PB85 and PB85S Paving Breakers with spike driver front head parts (refer to illustration below).

STANDARD EQUIPMENT:

Each standard Paving Breaker and Spike Driver is a complete unit ready to be put into service with proper lubrication. There are no extra parts or special fittings required.

The standard PB85 and PB85S Paving Breakers have a Fronthead Bushing (50008234) for 32 mm hex. x 152 mm lg (1-1/4 in. x 6 in. lg) paving breaker shank.

OPTIONAL FRONTHEAD BUSHING:

An optional Fronthead Bushing (50008242) for a 29 mm hex. x 152 mm lg (1-1/8 in. hex. x 6 in. lg) paving breaker shank is available and will be furnished when specially ordered.

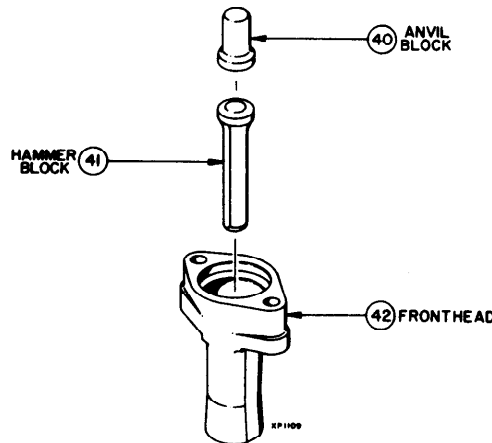
LUBRICATION:

A high-quality Rock Drill Oil conforming to the physical and chemical properties outlined in the Instruction Book, Form 4921 must be added to the operating air supply to lubricate the moving parts of the PB85 and PB85S. The method of lubrication depends on actual operating conditions and customer preference:

a. The lubricating-oil reservoir built in the handle will provide proper lubrication. It must be checked every two hours and refilled as necessary.

b. For intermittent operation with an air-supply hose no longer than 15 m (49 ft), a compressor-mounted lubricator can be used.

c. For continuous operation during an eight-hour shift, an Ingersoll-Rand IRO-16F, or other constant-feed air line lubricator, should be installed in the air-supply line about 3.5 m (11.5 ft) from the breaker. The IRO-16F has a capacity of 0.47 liters (1 U.S. pint) and will be furnished when specially ordered.



PB85 AND PB85S SPIKE DRIVER PARTS

REF. NO.	PART NO.	NAME OF PART Parts indented under an item are included with that item	QTY.	RECOMMENDED SPARES		
				CLASS		
				1 Min.	2 Av.	3 Max.
40	50784560	ANVIL BLOCK -----	1			
41	50021575	HAMMER BLOCK -----	1			
42	50784578	FRONTHEAD -----	1			

NOTE: When the PB85 or PB85S Breaker is used as a Spike Driver, the following standard parts must be replaced by the above parts: Anvil Block, Fronthead, Fronthead Bushing, Steel Retainer Lever, Lever Pin, Retainer Plunger and Retainer Spring.