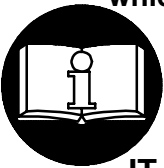


INSTRUCTIONS FOR MODEL IR-C215 HEAVY DUTY IMPACT WRENCH

NOTICE

Model IR-C215 Impact Wrench is designed to handle major service work on brakes, exhaust systems and vehicle front ends.

Ingersoll-Rand is not responsible for customer modification of tools for applications on which Ingersoll-Rand was not consulted.



⚠ WARNING

**IMPORTANT SAFETY INFORMATION ENCLOSED.
READ THIS MANUAL BEFORE OPERATING TOOL.**

**IT IS THE RESPONSIBILITY OF THE EMPLOYER TO PLACE THE INFORMATION
IN THIS MANUAL INTO THE HANDS OF THE OPERATOR.**

FAILURE TO OBSERVE THE FOLLOWING WARNINGS COULD RESULT IN INJURY.

PLACING TOOL IN SERVICE

- Always operate, inspect and maintain this tool in accordance with all regulations (local, state, federal and country), that may apply to hand held/hand operated pneumatic tools.
- For safety, top performance, and maximum durability of parts, operate this tool at 90 psig (6.2 bar/620 kPa) maximum air pressure at the inlet with 5/16" (8 mm) inside diameter air supply hose.
- Always turn off the air supply and disconnect the air supply hose before installing, removing or adjusting any accessory on this tool, or before performing any maintenance on this tool.
- Do not use damaged, frayed or deteriorated air hoses and fittings.
- Be sure all hoses and fittings are the correct size and are tightly secured. See Dwg. TPD905-1 for a typical piping arrangement.
- Always use clean, dry air at 90 psig maximum air pressure. Dust, corrosive fumes and/or excessive moisture can ruin the motor of an air tool.
- Do not lubricate tools with flammable or volatile liquids such as kerosene, diesel or jet fuel.
- Do not remove any labels. Replace any damaged label.

USING THE TOOL

- Always wear eye protection when operating or performing maintenance on this tool.

- Always wear hearing protection when operating this tool.
- Keep hands, loose clothing and long hair away from rotating end of tool.
- Note the position of the reversing lever before operating the tool so as to be aware of the direction of rotation when operating the throttle.
- Anticipate and be alert for sudden changes in motion during start up and operation of any power tool.
- Keep body stance balanced and firm. Do not overreach when operating this tool. High reaction torques can occur at or below the recommended air pressure.
- Tool shaft may continue to rotate briefly after throttle is released.
- Air powered tools can vibrate in use. Vibration, repetitive motions or uncomfortable positions may be harmful to your hands and arms. Stop using any tool if discomfort, tingling feeling or pain occurs. Seek medical advice before resuming use.
- Use accessories recommended by Ingersoll-Rand.
- Use only impact sockets and accessories. Do not use hand (chrome) sockets or accessories.
- Impact wrenches are not torque wrenches. Connections requiring specific torque must be checked with a torque meter after fitting with an impact wrench.
- This tool is not designed for working in explosive atmospheres.
- This tool is not insulated against electric shock.

NOTICE

The use of other than genuine Ingersoll-Rand replacement parts may result in safety hazards, decreased tool performance, and increased maintenance, and may invalidate all warranties.

Repairs should be made only by authorized trained personnel. Consult your nearest Ingersoll-Rand Authorized Servicenter.

Refer All Communications to the Nearest
Ingersoll-Rand Office or Distributor.

© Ingersoll-Rand Company 1999

Printed in U.S.A.



CORNWELL®
The Choice of Professionals®

BY INGERSOLL-RAND

WARNING LABEL IDENTIFICATION

⚠ WARNING

FAILURE TO OBSERVE THE FOLLOWING WARNINGS COULD RESULT IN INJURY.

	⚠ WARNING
	Always wear eye protection when operating or performing maintenance on this tool.

	⚠ WARNING
	Always wear hearing protection when operating this tool.

	⚠ WARNING
	Always turn off the air supply and disconnect the air supply hose before installing, removing or adjusting any accessory on this tool, or before performing any maintenance on this tool.

	⚠ WARNING
	Air powered tools can vibrate in use. Vibration, repetitive motions or uncomfortable positions may be harmful to your hands and arms. Stop using any tool if discomfort, tingling feeling or pain occurs. Seek medical advice before resuming use.

	⚠ WARNING
	Do not carry the tool by the hose.

	⚠ WARNING
	Do not use damaged, frayed or deteriorated air hoses and fittings.

	⚠ WARNING
	Keep body stance balanced and firm. Do not overreach when operating this tool.

	⚠ WARNING
	Operate at 90 psig (6.2 bar/ 620 kPa) Maximum air pressure.

ADJUSTMENTS

SETTING THE POWER REGULATOR

⚠ WARNING

Impact wrenches are not torque wrenches. Connections requiring specific torque must be checked with a torque meter after fitting with an impact wrench.

Model IR-C215 Impact Wrench incorporates a power regulator into the reverse mechanism. To adjust the power, rotate the Power Regulator (12) until the notch aligns with the number of the desired power setting.

NOTICE

The numbers 1 thru 3 on the housing are only for reference and DO NOT denote a specific power output. One (1) designates the lowest power output while three (3) denotes the highest.

PLACING TOOL IN SERVICE

LUBRICATION

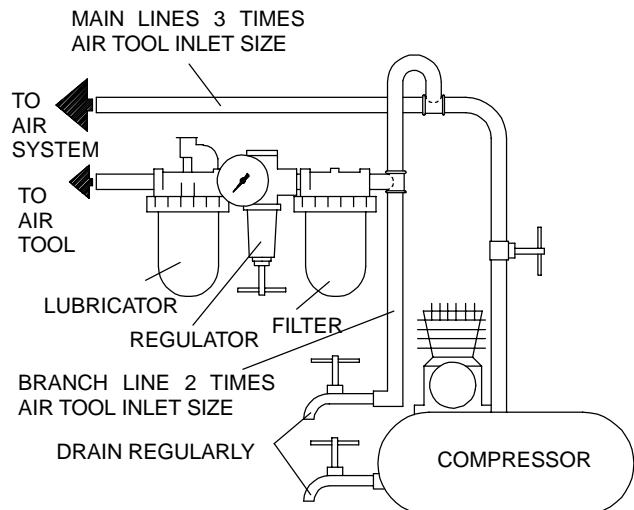


Ingersoll-Rand No. 50

Always use of an air line lubricator with these tools. We recommend the following Filter-Lubricator-Regulator Unit:

For USA- No. C22-04-G00

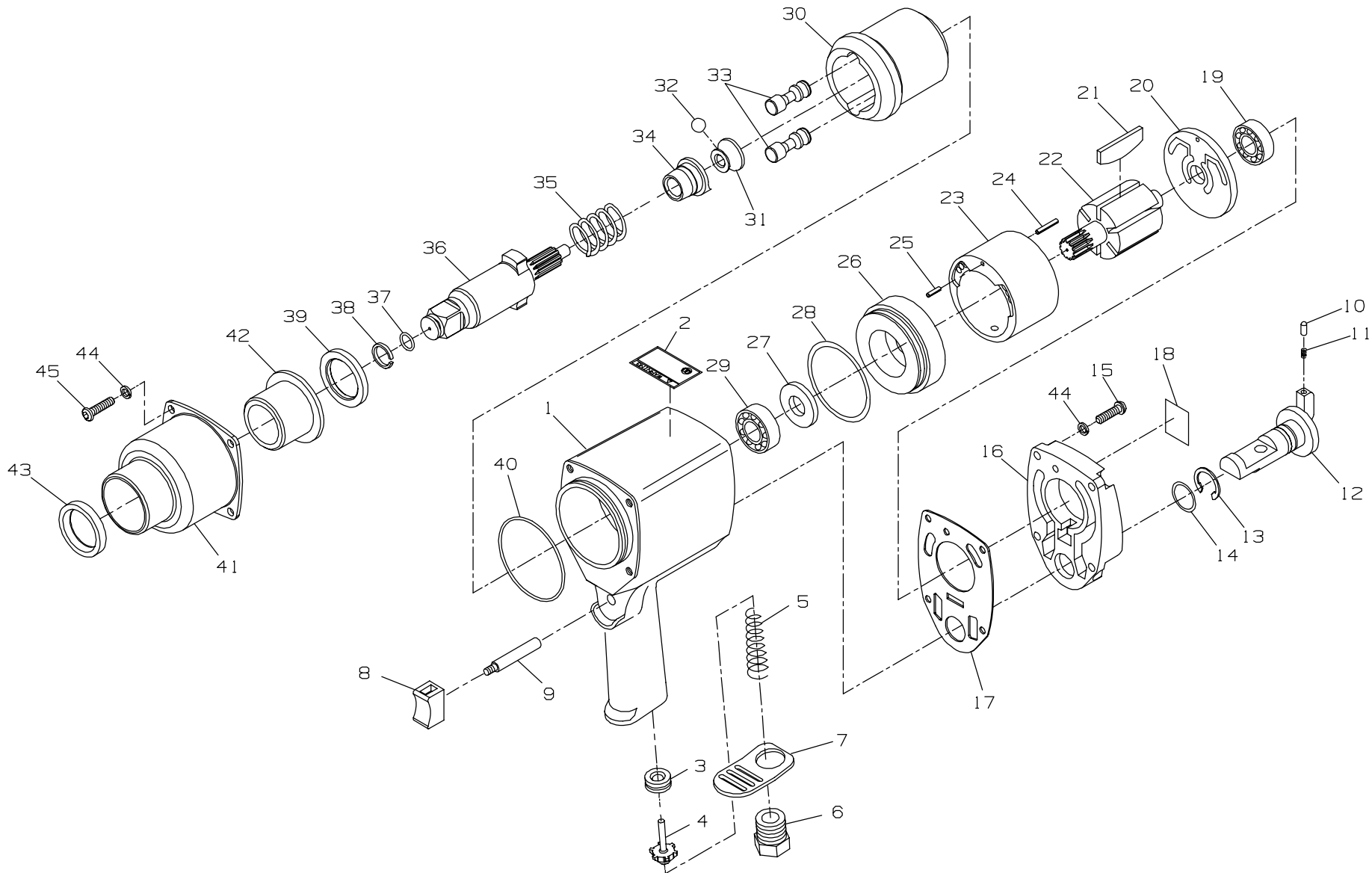
After each eight hours of operation, unless an air line lubricator is used, detach the air hose and inject about 1-1/2 cc of Ingersoll-Rand No. 50 Oil into the Inlet Bushing (6).



(Dwg. TPD905-1)

SPECIFICATIONS

Model	Type of Handle	Drive	Impacts per min.	Recommended Torque Range
		in.		ft-lbs (Nm)
IR-C215	pistol	3/8" sq.	1,600	15-180 (20-244)



(Dwg. TPA1720)

PART NUMBER FOR ORDERING 

PART NUMBER FOR ORDERING 

1	Motor Housing Assembly	IRC215-A40	26	Front End Plate Assembly	215-A11
2	Warning Label	WARNING-27-99	27	Oil Seal	215-708
3	Throttle Valve Seat	235-303	28	O-ring	215-213
4	Throttle Valve Stem	235-50	29	Front Rotor Bearing	222-22
5	Throttle Valve Spring	235-51	30	Hammer Cage	215-724
6	Inlet Bushing	235-565	31	Spindle Guide	215-630
7	Exhaust Deflector	235-EU-23	32	Ball	215-722
8	Trigger	231H-93	33	Hammer Pin (2)	215-704
9	Trigger Pin	235-302	34	Hammer Cam	215-721
10	Power Regulator Stop Pin	235-421	35	Hammer Spring	215-728
11	Power Regulator Stop Spring	207-334	36	Anvil Assembly	215-A626
12	Power Regulator	215-329	37	Retainer O-ring	205-425
13	Retaining Ring	215-168	38	Retainer Ring	205-426
14	O-ring	215-338	39	Anvil Spacer	215-706
15	Motor Cover Cap Screw (4)	207-638	40	O-ring	215-36A
16	Motor Cover Assembly	BNV215-A202	41	Hammer Case Assembly	215-A727
17	Motor Cover Gasket	215-739	42	Hammer Case Bushing	215-641
18	Nameplate	IRC215-301	43	Oil Seal	223-271
19	Rear Rotor Bearing	7804R-22	44	Lock Washer (8)	223-58
20	Rear End Plate	215-12	45	Hammer Case Cap Screw (4)	235-638
21	Vane Packet (set of 6 Vanes)	215-42-6			
22	Rotor	215-53			
23	Cylinder Assembly	215-A3			
24	Cylinder Dowel (rear)	251-97			
25	Cylinder Dowel (front)	251-98			

