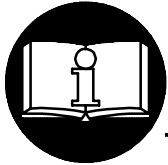


MODEL LA431 ORBITAL SANDER**▲ WARNING**

IMPORTANT INFORMATION CONTAINED IN OPERATION AND MAINTENANCE MANUAL FOR SAFE TOOL OPERATION. THIS MATERIAL MUST BE READ PRIOR TO OPERATING THE TOOL.

FAILURE TO OBSERVE THE FOLLOWING WARNINGS COULD RESULT IN INJURY.

1. Always operate, inspect and maintain this tool in accordance with Recommendations for Proper Use of Hand Operated/Hand Held Pneumatic Tools (PNEUROP 18/1986).
2. For safety, top performance, and maximum durability of parts, operate this tool at 90 psig (6.2 bar/620 kPa) maximum air pressure with 3/8" (10 mm) inside diameter air supply hose.
3. Always turn off the air supply and disconnect the air supply hose before installing, removing or adjusting any accessory on this tool, or before performing any maintenance on this tool.
4. Keep hands, loose clothing and long hair away from rotating end of tool.
5. Anticipate and be alert for sudden changes in motion during start up and operation of any power tool. High reaction torques can occur with tools that control output rpm through stall, geared or clutch type mechanisms at or below the recommended air pressure.
6. Check for excessive speed and vibration before operating.
7. Sanding Pad may continue to rotate briefly after throttle is released.
8. Do not lubricate tools with flammable or volatile liquids such as kerosene, diesel or jet fuel.
9. For personal protection, do not remove any labels. Replace any damaged label.
10. Use only recommended Ingersoll-Rand accessories.
11. These sanders will operate at the free speed specified on the nameplate if the air supply line furnishes 90 psig (6.2 bar/620 kPa) air pressure at the tool. Operation at higher air pressure will result in excessive speed.

LUBRICATION

Oil: A good quality SAE20 or 20W motor oil.
Grease: Ingersoll-Rand No. 67.

We recommend the use of Ingersoll-Rand No. C11-04-G29 Filter-Lubricator-Regulator Unit in the air supply line. Attach the unit as close to the tool as practical.

After each eight hours of operation, unless an air-line lubricator is used, inject 1/2 cc of the recommended oil into the air inlet before attaching the hose.

NOTICE

The use of other than genuine Ingersoll-Rand replacement parts may result in safety hazards, decreased tool performance, and increased maintenance, and may invalidate all warranties.

Ingersoll-Rand is not responsible for customer modification of tools for applications on which Ingersoll-Rand was not consulted.

Repairs should be made only by authorized trained personnel. Consult your nearest Ingersoll-Rand Authorized Servicenter.


It is the responsibility of the employer to place the information in this manual into the hands of the operator.

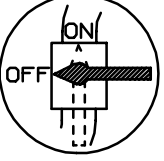
WARNING LABEL IDENTIFICATION

⚠ WARNING


FAILURE TO OBSERVE THE FOLLOWING WARNINGS COULD RESULT IN INJURY.


	⚠ WARNING
	Always wear eye protection when operating or performing maintenance on this tool.


	⚠ WARNING
	Always wear hearing protection when operating this tool.

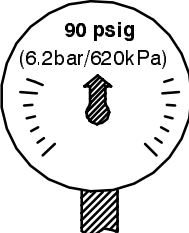
	⚠ WARNING
	Always turn off the air supply and disconnect the air supply hose before installing, removing or adjusting any accessory on this tool, or before performing any maintenance on this tool.

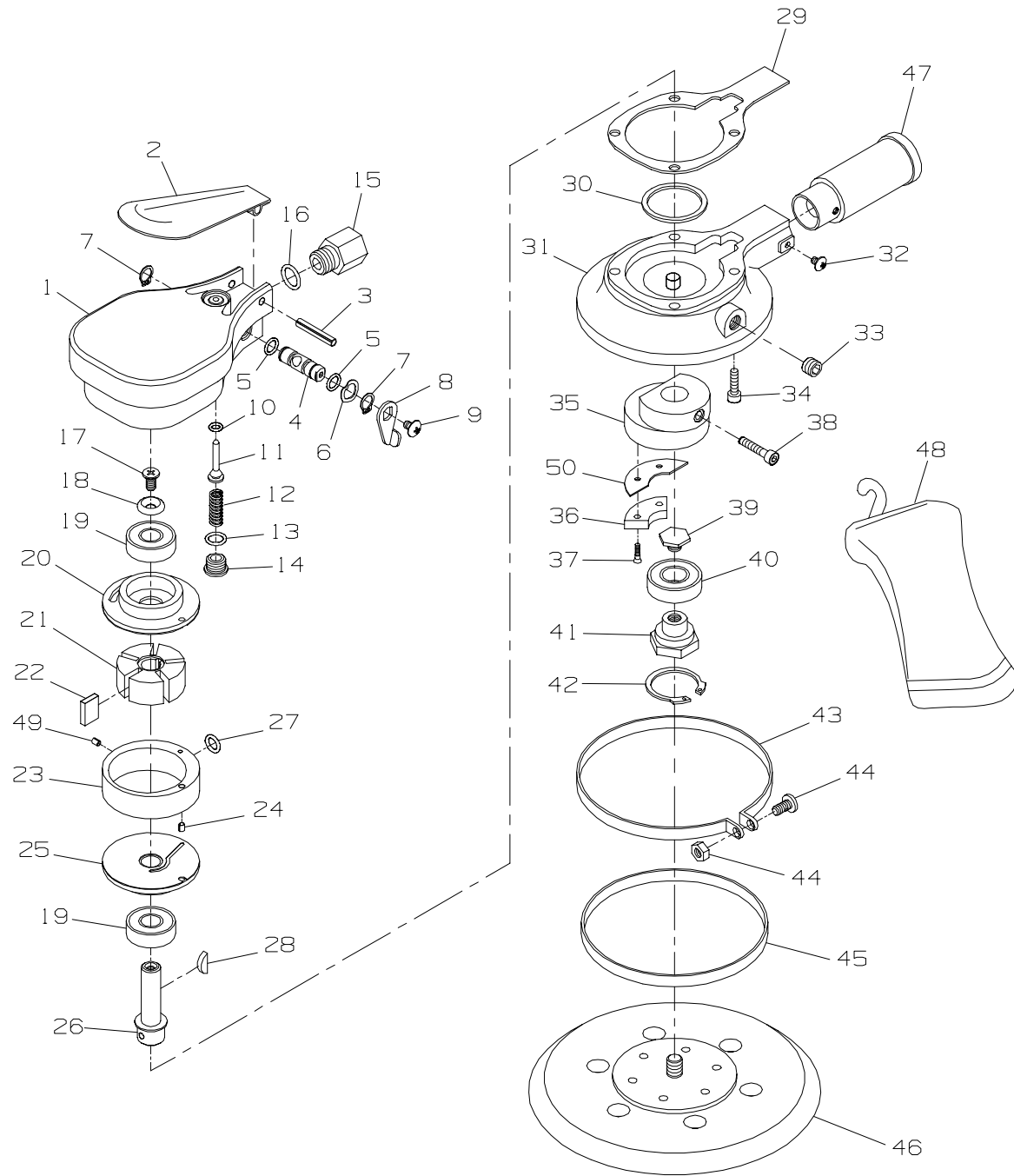
	⚠ WARNING
	Air powered tools can vibrate in use. Vibration, repetitive motions or uncomfortable positions may be harmful to your hands and arms. Stop using any tool if discomfort, tingling feeling or pain occurs. Seek medical advice before resuming use.

	⚠ WARNING
	Do not carry the tool by the hose.

	⚠ WARNING
	Do not use damaged, frayed or deteriorated air hoses and fittings.

	⚠ WARNING
	Keep body stance balanced and firm. Do not overreach when operating this tool.

	⚠ WARNING
	Operate at 90 psig (6.2 bar/620 kPa) Maximum air pressure.



PART NUMBER FOR ORDERING



PART NUMBER FOR ORDERING



1	Body	LA431-1	27	O-ring	LA431-24-2
2	Lever	LA431-2	28	Key	LA431-28
3	Pin	LA431-3	29	Gasket	LA431-29
4	Valve	LA431-4	30	Gasket	LA431-30
5	O-ring (2)	LA431-5	31	Lower Body	LA431-31
6	Wave Washer	LA431-6	32	Screw	LA431-32
7	Snap Ring (2)	LA431-7	33	Plug	LA431-33
8	Regulator	LA431-8	34	Screw (4)	LA431-34
9	Screw	LA431-9	35	Balancer	LA431-35
10	Throttle Valve O-ring	LA431-100	36	Weight	LA431-36
11	Throttle Valve	LA431-101	37	Screw (2)	LA431-37
12	Throttle Valve Spring	LA431-12	38	Screw	LA431-38
13	Screw O-ring	LA431-13	39	Bolt	LA431-39
14	Screw	LA431-14	40	Bearing	LA431-40
15	Inlet Bushing	LA431-15	41	Spindle	LA431-41
16	O-ring	LA431-16	42	Snap Ring	LA431-42
17	Screw	LA431-17	43	Clamp	LA431-43
18	Washer	LA431-18	44	Screw Set	LA431-44
19	Bearing (2)	LA431-19	45	Rubber Cover	LA431-45
20	Bearing Plate	LA431-20	46	Pad	LA431-46
21	Rotor	LA431-21	47	Vacuum Hose	LA431-47
22	Vane (5)	LA431-22	48	Dust Bag	LA431-48
23	Cylinder	LA431-24-1	49	Pin	LA431-24-3
24	Pin	LA431-24-4	50	Spacer	LA431-102
25	Bearing Plate	LA431-20	*	Nameplate	LA431-301
26	Shaft	LA431-27			

* Not illustrated.

NOTICE

SAVE THESE INSTRUCTIONS. DO NOT DESTROY.

When the life of the tool has expired, it is recommended that the tool be disassembled, degreased and parts be separated by material so that they can be recycled.