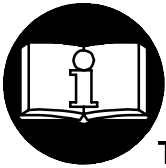


MODELS LA414 AND LA438 2" HIGH-SPEED AIR CIRCULAR SAW

WARNING



IMPORTANT INFORMATION CONTAINED IN OPERATION AND MAINTENANCE MANUAL FOR SAFE TOOL OPERATION. THIS MATERIAL MUST BE READ PRIOR TO OPERATING THE TOOL.

FAILURE TO OBSERVE THE FOLLOWING WARNINGS COULD RESULT IN INJURY.

1. Always operate, inspect and maintain this tool in accordance with Recommendations for Proper Use of Hand Operated/Hand Held Pneumatic Tools (PNEUROP 18/1986).
2. For safety, top performance, and maximum durability of parts, operate this tool at 90 psig (6.2 bar/620 kPa) maximum air pressure with 3/8" (10 mm) inside diameter air supply hose.
3. Always turn off the air supply and disconnect the air supply hose before installing, removing or adjusting any accessory on this tool, or before performing any maintenance on this tool.
4. Keep hands, loose clothing and long hair away from rotating end of tool.
5. Anticipate and be alert for sudden changes in motion during start up and operation of any power tool. High reaction torques can occur with tools that control output rpm through stall, geared or clutch type mechanisms at or below the recommended air pressure.
6. Check for excessive speed and vibration before operating.
7. Tool accessory may continue to rotate briefly after throttle is released.
8. Do not lubricate tools with flammable or volatile liquids such as kerosene, diesel or jet fuel.
9. For personal protection, do not remove any labels. Replace any damaged label.
10. Use only recommended Ingersoll-Rand accessories.

LUBRICATION

Oil: A good quality SAE 20 or 20W motor oil
Grease: Ingersoll-Rand No. 67

We recommend the use of the Ingersoll-Rand No. C11-03-G29 Filter-Lubricator-Regulator Unit in the air supply line. Attach the unit as close to the tool as practical.

Before starting the tool and after each eight hours of operation, unless the air line lubricator is used, detach the air hose and inject about 1/2 cc of oil into the air inlet.

After each eight hours of operation, or as experience indicates, inject about 1 cc of the recommended grease into the Grease Fitting.

NOTICE

The use of other than genuine Ingersoll-Rand replacement parts may result in safety hazards, decreased tool performance and increased maintenance, and may invalidate all warranties.

Ingersoll-Rand is not responsible for customer modification of tools for applications on which Ingersoll-Rand was not consulted.

Repairs should be made only by authorized, trained personnel. Consult your nearest Ingersoll-Rand Authorized Servicenter.

It is the responsibility of the employer to place the information in this manual into the hands of the operator.

WARNING LABEL IDENTIFICATION



FAILURE TO OBSERVE THE FOLLOWING WARNINGS COULD RESULT IN INJURY.

	<p style="text-align: center;">WARNING</p> <p>Important information contained in Operation and Maintenance Manual for safe tool operation. This material must be read prior to operating the tool.</p>
--	---

	<p style="text-align: center;">WARNING</p> <p>Always wear eye protection when operating or performing maintenance on this tool.</p>
--	--

	<p style="text-align: center;">WARNING</p> <p>Always wear hearing protection when operating this tool.</p>
--	---

	<p style="text-align: center;">WARNING</p> <p>Air powered tools can vibrate in use. Vibration, repetitive motions or uncomfortable positions may be harmful to your hands and arms. Stop using any tool if discomfort, tingling feeling or pain occurs. Seek medical advice before resuming use.</p>
--	---

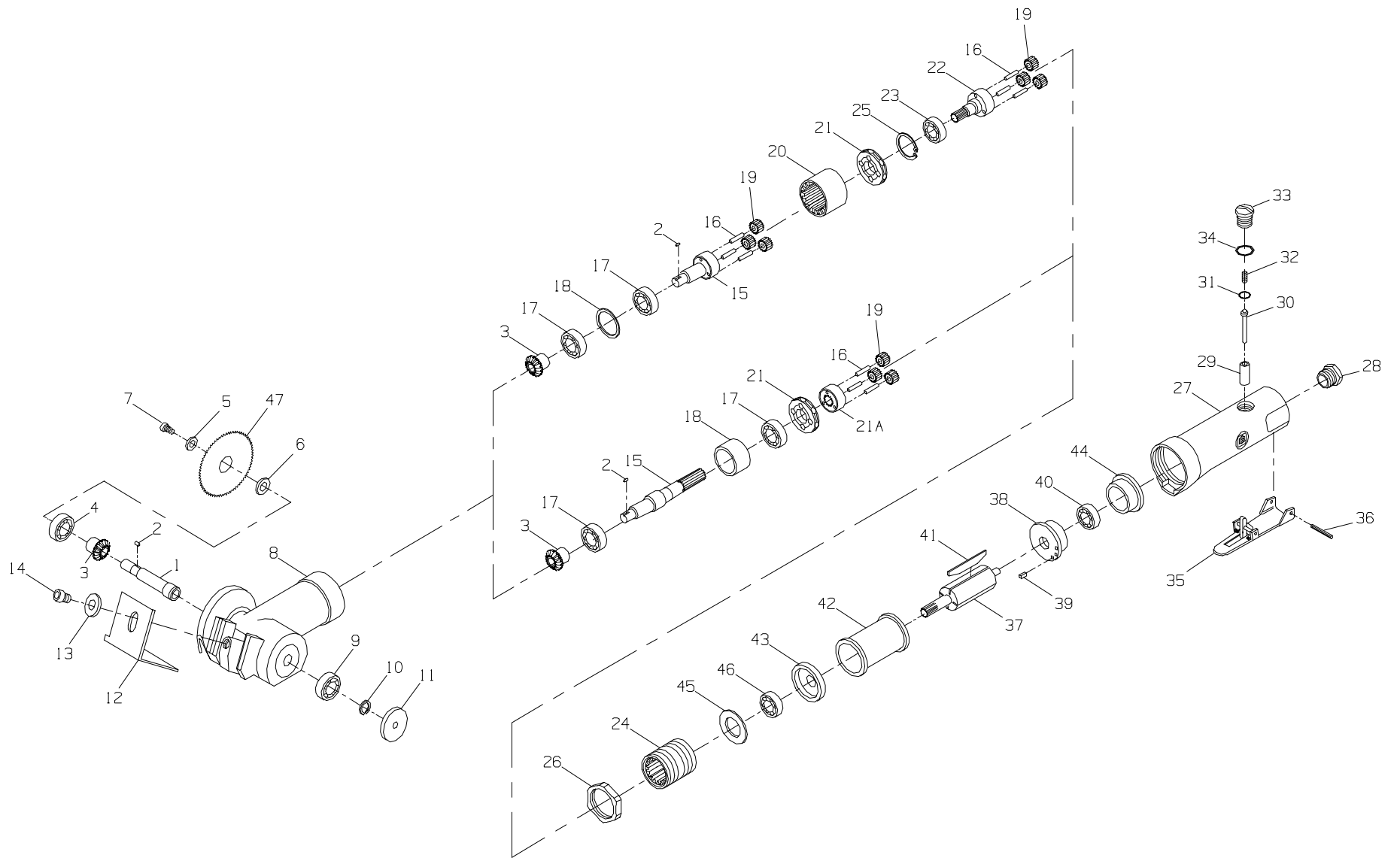
	<p style="text-align: center;">WARNING</p> <p>Always turn off the air supply and disconnect the air supply hose before installing, removing or adjusting any accessory on this tool, or before performing any maintenance on this tool.</p>
--	--

	<p style="text-align: center;">WARNING</p> <p>Do not use damaged, frayed or deteriorated air hoses and fittings.</p>
--	---

	<p style="text-align: center;">WARNING</p> <p>Do not carry the tool by the hose.</p>
--	---

	<p style="text-align: center;">WARNING</p> <p>Operate at 90 psig (6.2 bar/620 kPa) Maximum air pressure.</p>
--	---

	<p style="text-align: center;">WARNING</p> <p>Keep body stance balanced and firm. Do not overreach when operating this tool.</p>
--	---



PART NUMBER FOR ORDERING

PART NUMBER FOR ORDERING

1	Gear Shaft	LA414-108	25	Internal Stop Ring (for Model LA414)	LA414-30
2	Bevel Gear Lock Pin (2)	LA414-1	26	Distance Nut	LA414-31
3	Bevel Gear (2)	LA414-70	27	Motor Housing	LA414-40
4	Ball Bearing	LA414-2	28	Air Inlet Bushing	LA414-565
5	Saw Blade Holder Flange	LA414-4	29	Throttle Valve	LA414-302
6	Saw Blade Bolt Flange	LA414-5	30	Valve	LA414-44
7	Hex Socket Head Cap Bolt	LA414-6	31	O-ring	LA414-43
8	Bevel Gear Housing	LA414-32	32	Throttle Spring	LA414-51
9	Ball Bearing	LA414-7	33	Throttle Valve Plug	LA414-377
10	External Stop Ring	LA414-8	34	O-ring	LA414-45
11	Casing Cover	LA414-41	35	Throttle Lever Kit	LA414-273
12	Guide Plate	LA414-9	36	Trigger Pin	LA414-74
13	Spring Washer	LA414-10	37	Rotor	LA414-53
14	Hexagon Socket Head Cap Bolt	LA414-13	38	Rear End Plate	LA414-12
15	Main Shaft (for Model LA414)	LA414-14	39	Spring Pin	LA414-46
16	Needle Roller (6) for Model LA414	LA414-15	40	Rear Rotor Bearing	LA414-47
	(3) for Model LA438	LA438-15	41	Vane (4)	LA414-42
17	Ball Bearing (2)	LA414-16	42	Cylinder	LA414-3
18	Spacer Collar for Model LA414	LA414-17	43	Front End Plate	LA414-11
	for Model LA438	LA438-17	44	Bearing Cap	LA414-50
19	Idler Gear (6 for LA414; 3 for LA438)	LA414-18	45	Washer	LA414-55
20	Internal Gear (for Model LA414)	LA414-19	46	Front Rotor Bearing	LA414-61
21	Bearing Support	LA414-20	47	Saw Blade	LA414-56
21A	Idler Spindle (for Model LA438)	LA438-23	*	L-shape Hex Wrench (2)	LA414-57
22	Drive Shaft (for Model LA414)	LA414-21	*	L-shape Hex Wrench	LA414-60
23	Ball Bearing (for Model LA414)	LA414-22	*	Nameplate for Model LA414	LA414-301
24	Internal Gear for Model LA414	LA414-23		for Model LA438	LA438-301
	for Model LA438	LA438-14			

* Not illustrated.

NOTICE

SAVE THESE INSTRUCTIONS. DO NOT DESTROY.

When the life of the tool has expired, it is recommended that the tool be disassembled, degreased and parts be separated by material so that they can be recycled.