

SERIES M0V050 AND M0V075 REVERSIBLE MULTI-VANE® MOTORS

5 HORSEPOWER SIZES

M0V050AA -- FOOT MOUNTING

M0V050AB -- NEMA C FACE MOUNTING (215 ELECTRIC MOTOR FRAME SIZE)

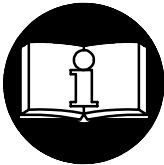
M0V050AC -- NEMA D FLANGE MOUNTING (215 ELECTRIC MOTOR FRAME SIZE)

7-1/2 HORSEPOWER SIZES

M0V075AA -- FOOT MOUNTING

M0V075AB -- NEMA C FACE MOUNTING (254U ELECTRIC MOTOR FRAME SIZE)

M0V075AC -- NEMA D FLANGE MOUNTING (254U ELECTRIC MOTOR FRAME SIZE)



⚠ WARNING

**IMPORTANT SAFETY INFORMATION ENCLOSED.
READ THIS MANUAL BEFORE OPERATING TOOL.**

FAILURE TO OBSERVE THE FOLLOWING WARNINGS COULD RESULT IN INJURY.

- Always operate, inspect and maintain this motor in accordance with American National Standards Institute Safety Code for Portable Air Tools (ANSI B186.1).
- For safety, top performance and maximum durability of parts, operate this motor at 90 psig (6.2 bar/620 kPa) air pressure at the inlet with 1" (25 mm) air supply hose.
- Always turn off the air supply and disconnect the air supply hose before installing, removing or adjusting any accessory on this motor.
- Keep hands, loose clothing and long hair away from rotating end of motor.
- Anticipate and be alert for sudden changes in motion during start up and operation of any motor.
- Motor shaft may continue to rotate briefly after the throttle is released.
- Do not lubricate motor with flammable or volatile liquids such as kerosene, diesel or jet fuel.
- Do not remove any labels. Replace and damaged label.
- Use accessories recommended by Ingersoll-Rand.
- This motor is not designed for working in explosive atmospheres.
- This motor is not insulated against electric shock.

NOTICE

The use of other than genuine Ingersoll-Rand replacement parts may result in safety hazards, decreased tool performance and increased maintenance, and may invalidate all warranties.

Ingersoll-Rand is not responsible for customer modification of tools for applications on which Ingersoll-Rand was not consulted.

Repairs should be made only by authorized, trained personnel. Consult your nearest Ingersoll-Rand Authorized Servicer.

It is the responsibility of the employer to place the information in this manual into the hands of the operator.

Refer All Communications to the Nearest
Ingersoll-Rand Office or Distributor.

©Ingersoll-Rand Company, 2001

Printed in U.S.A.



WARNING LABEL IDENTIFICATION



WARNING

FAILURE TO OBSERVE THE FOLLOWING WARNINGS COULD RESULT IN INJURY.

	<p>WARNING</p> <p>Always wear eye protection when operating or performing maintenance on this motor.</p>
--	---

	<p>WARNING</p> <p>Always wear hearing protection when operating this motor.</p>
--	--

	<p>WARNING</p> <p>Always turn off the air supply and disconnect the air supply hose before installing, removing or adjusting any accessory on this motor, or before performing any maintenance on this motor.</p>
--	--

	<p>WARNING</p> <p>Operate at 90 psig (6.2 bar/ 620 kPa) Maximum air pressure.</p>
--	--

	<p>WARNING</p> <p>Do not use damaged, frayed or deteriorated air hoses and fittings.</p>
--	---

PLACING TOOL IN SERVICE

LUBRICATION



Ingersoll-Rand No. 50 Ingersoll-Rand No. 28

We recommend the use of an air line lubricator in the air supply line. Attach the unit as close to the motor as practical. We recommend using an Ingersoll-Rand No. F42-0A-000 Filter, a No. R30-0A-G00 Regulator and a No. L40-0A-000 Lubricator.

These units have 1-1/4" pipe tap inlet and outlet. The Lubricator has a 2 pint (946 mL) oil capacity. Larger capacity units may be used, but do not use a unit having less than a 1-1/4" pipe tap inlet and outlet.

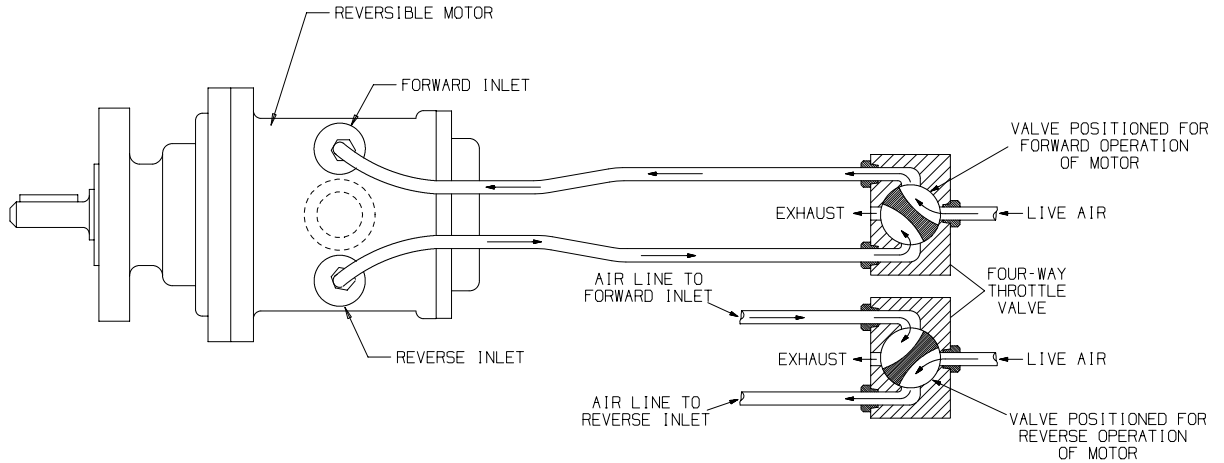
Whenever the Motor is disassembled for repair or maintenance, lubricate the Rear Rotor Bearing and Front Rotor Bearing with the recommended grease.

PLACING TOOL IN SERVICE

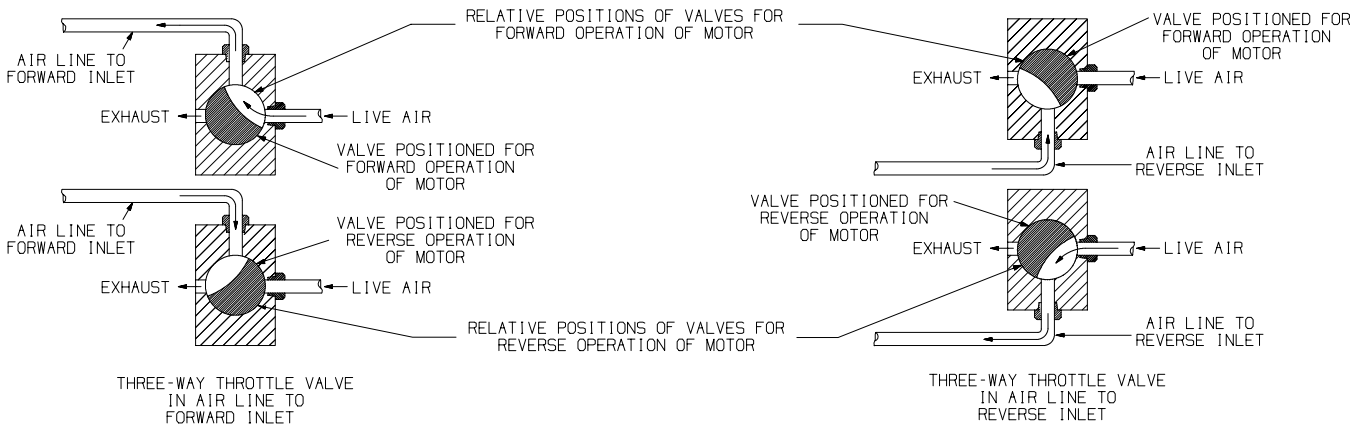
OPERATION

When these motors are used on applications requiring a reversible motor, a 4-way throttle valve or two 3-way throttle valves must be used in the air supply line in accordance with the schematic diagram shown in drawing TPB 256.

When the application requires a nonreversible motor, a 2-way in-line valve can be used in the air supply line. In either case, the inlet and outlet of the valve must be equal in size, and preferably one size larger, than the inlet of the motor.

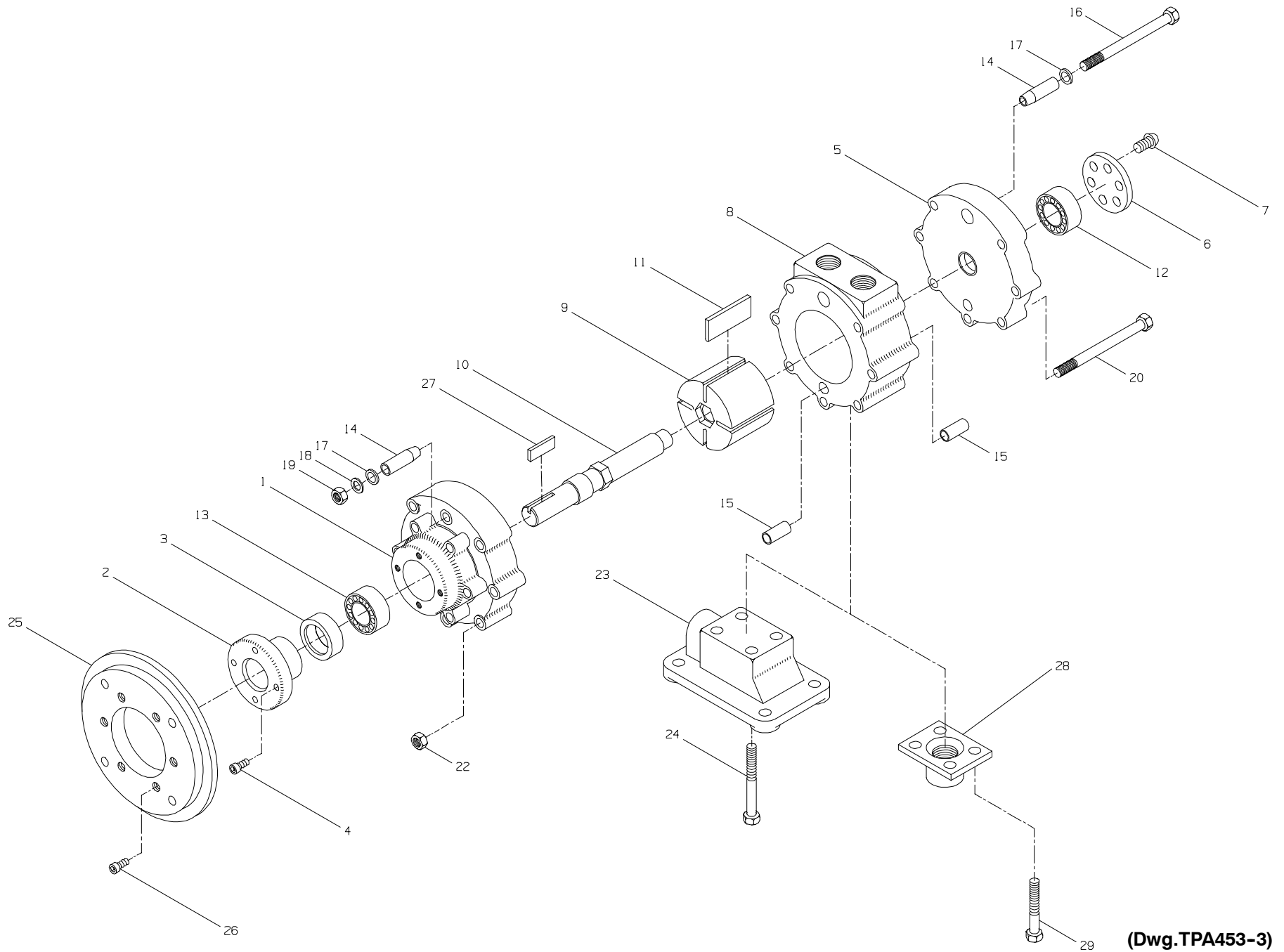


Single Four-Way Valve for Controlling Forward and Reverse Operation of Motor



Two Three-Way Valves for Controlling Forward and Reverse operation of Motor

(Dwg. TPB256)





PART NUMBER FOR ORDERING

PART NUMBER FOR ORDERING

1	Fronthead	M0V050AA-240	19	Dowel Bolt Nut (1/4"-28 thd.)	T06-139
2	Fronthead Cap Assembly	M0V050AA-A378	20	Through Bolt (7)	
3	Rotor Shaft Seal	FM-508		for M0V050 (3/8"-16	
4	Fronthead Cap Retaining Screw (4) (1/4"-20			thd. x 4" long)	C6H20A-548
	thd. x 7/8" long)	510-638		for M0V075 (3/8"-16	
5	Backhead	M0V050AA-102		thd. x 4-1/2" long)	HU-548
6	Backhead Cap	M0V050AA-104	*	Through Bolt Lock Washer (7)	D02-321
7	Backhead Cap Retaining Screw (6) (No. 10-32		22	Through Bolt Nut (7)	D02-418
	thd. x 1/2" long)	M0V050AA-31	23	Mounting Foot	
8	Cylinder			for M0V050AA	M0V050AA-4
	for M0V050	M0V050AA-3		for M0V075AA	M0V075AA-4
	for M0V075	M0V075AA-3	24	Mounting Foot Bolt (4)	
9	Rotor			for M0V050AA	R5H-104
	for M0V050	M0V050AA-53		for M0V075AA	DLC-1011
	for M0V075	M0V075AA-53	25	NEMA Face Mounting Adapter	
10	Rotor Shaft			for M0V050AB	M0V050AB-480
	for M0V050	M0V050AA-52		for M0V075AB	M0V075AB-480
	for M0V075	M0V075AA-52	25	NEMA Flange Mounting Adapter	
11	Vane Packet (set of 5 Vanes)			for M0V050AC	M0V050AC-580
	for M0V050	M0V050AA-42-5		for M0V075AC	M0V075AC-580
	for M0V075	M0V075AA-42-5	26	Adapter Screw (6) (for M0V050AB, M0V050AC,	
12	Rear Rotor Bearing	R4-24		M0V075AB, and M0V075AC)	21-702
13	Front Rotor Bearing	D10-518	27	Shaft Key	
14	Large Dowel (2)	M0V050AA-98		for M0V050	M0V050AA-745
15	Small Dowel (2)	JC3350-74		for M0V075	M0V075AA-745
16	Large Dowel Bolt		28	Exhaust Connector	
	for M0V050 (1/4"-28			for M0V050AB and M0V050AC	M0V050AB-288
	thd. x 3-1/2" long)	M0V050AA-99		for M0V075AB and M0V075AC	M0V075AB-288
	for M0V075 (1/4"-28 thd. x 4" long)	M0V075AA-99	29	Exhaust Connector Screw (4) (for M0V050AB,	
17	Dowel Bolt Plain Washer (2)	B12-265		M0V050AC, M0V075AB, and M0V075AC)	B8-240
18	Dowel Bolt Lock Washer	10BM-67	*	5/16" Lock Washer (4)	T11-58

* Not illustrated.

PART NUMBER FOR ORDERING



PART NUMBER FOR ORDERING



*	Mounting Foot Kit		*	Copper Seal Washer (2)	D02-504
	for MOV050	MOV050AA-K4	*	Mounting Foot Bolt	
	for MOV075	MOV075AA-K4		for MOV050	R5H-104
*	Mounting Foot			for MOV075	DLC-1011
	for MOV050	MOV050AA-4	*	Nameplate	MVA008-301
	for MOV075	MOV075AA-4	*	Nameplate Screw (2)	MVA008-302
*	Cap Screw (2)	DLC-752			

* Not illustrated.

