

## SERIES ET3803 EQUI-TORQ<sup>®</sup> AIR MOTORS

FOR TOP PERFORMANCE AND MAXIMUM DURABILITY OF PARTS, OPERATE THESE MOTORS USING 1/2" (13 mm) HOSE AT A MAXIMUM OF 85 psig (5.9 bar) AIR PRESSURE AT THE MOTOR. HIGHER PRESSURES WILL ACCELERATE WEAR.

### LUBRICATION

**Oil:** Ingersoll-Rand Pneu-Lube<sup>®</sup> Medium Oil No. 50 or a good quality SAE 20 or 20W motor oil.

**Grease:** Ingersoll-Rand Light Grease No. 28 or a good quality No. 2 cup grease.

Ingersoll-Rand Single Point Lubricators offer the best method for positive displacement injection to lubricate the motor.

After each 50 000 cycles remove the Grease Plug (41) from the Gear Case and inject 1 to 1.5 cc of grease.

### REPAIR SERVICE

We recommend that, for service or replacement of repair parts, these Motors be returned to Automatic Production Systems Division, Ingersoll-Rand Company, 23400 Halstead Road, Farmington, Michigan 48024.

**Notice:** The use of other than genuine Ingersoll-Rand replacement parts may result in decreased tool performance and increased maintenance, and may, at the Company's option, invalidate all warranties.

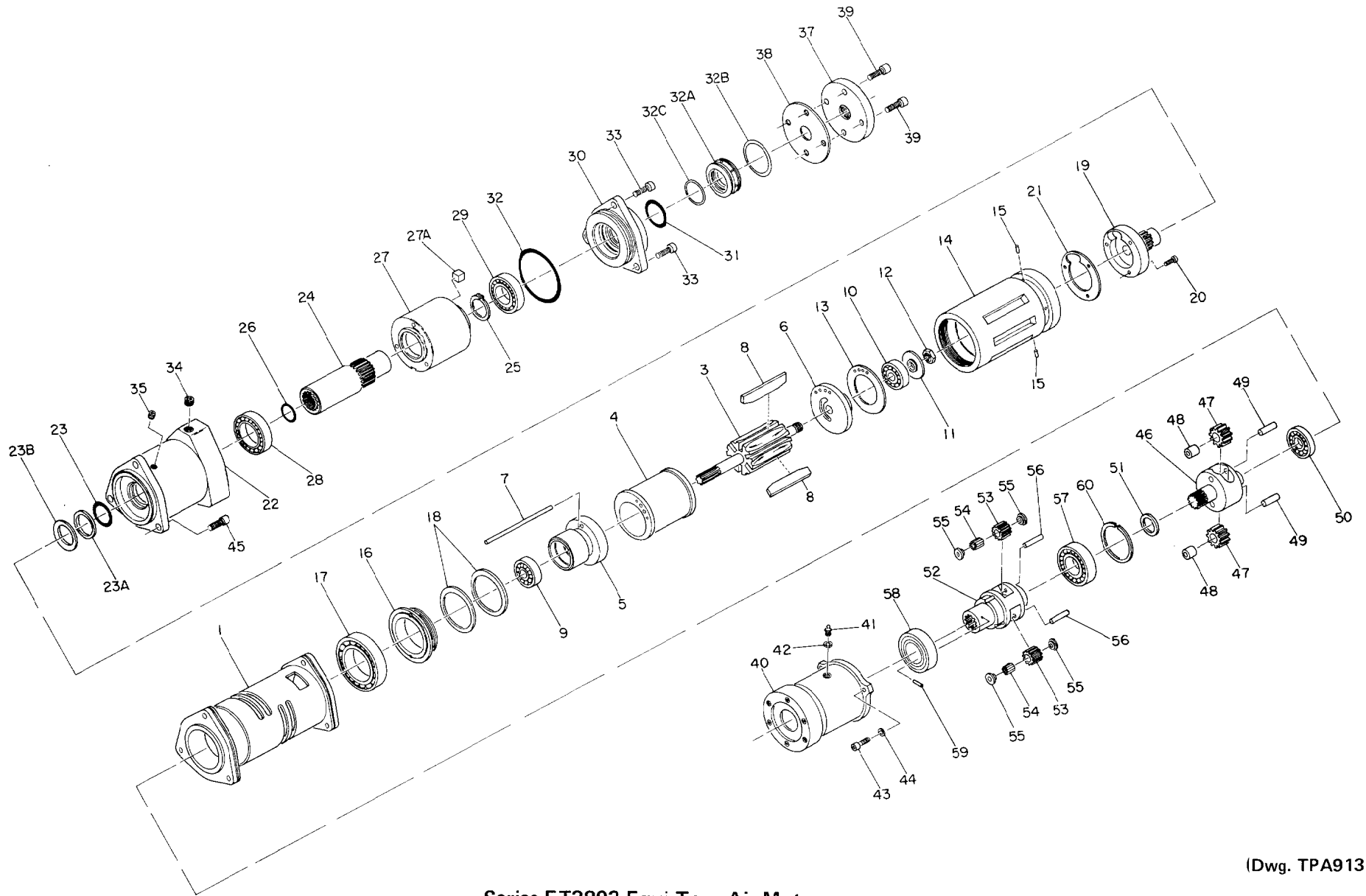
Refer All Communications to the Nearest  
Ingersoll-Rand Office or Distributor.

© Ingersoll-Rand Company 1981

Printed in U.S.A.

**INGERSOLL-RAND<sup>®</sup>**  
**PROFESSIONAL TOOLS**

**P  
A  
R  
T  
S  
  
B  
U  
L  
L  
E  
T  
I  
N**



Series ET3803 Equi-Torq Air Motors

(Dwg. TPA913)

PART NUMBER FOR ORDERING

PART NUMBER FOR ORDERING

1	Motor Housing . . . . .	ET3802-40A			Coupling Assembly . . . . .	ET3803-A580A	
*	Motor Housing Nameplate . . . . .	ET3803-301A		22	Coupling Housing Assembly . . . . .	ET3803-B580	
*	Nameplate Screw (2) . . . . .	BN403-302	●	23	Large Coupling Shaft Seal (consists of two parts) . . . . .	ET3803-210	
	Motor Assembly			23A	Housing Seal Retaining Washer . . . . .	ET3803-209	
	for ET3803QH3 and			23B	Retaining Ring . . . . .	ET3803-211	
	ET3803RH3 . . . . .	ET3803Q-A53		24	Coupling Shaft Assembly . . . . .	ET3802-A416	
	for ET3803SH3 . . . . .	ET3803S-A53		25	Coupling Shaft Snap Ring . . . . .	C6H20A-6	
	for ET3803UH3 . . . . .	ET3803U-A53	●	26	Coupling Driver Seal . . . . .	AD100-18	
3	Rotor			27	Coupling . . . . .	ET3802-587	
	for ET3803QH3 and			27A	Reservoir Compression Cube (4) . . . . .	ET1804-100	
	ET3803RH3 . . . . .	ET3803Q-53		28	Front Coupling Bearing . . . . .	ET3802-162	
	for ET3803SH3 . . . . .	ET3803S-53		29	Rear Coupling Bearing . . . . .	WLT160N-163	
	for ET3803UH3 . . . . .	ET3803U-53		30	Coupling Housing Cap Assembly . . . . .	ET3803-A202A	
4	Cylinder			31	Coupling Shaft Seal (consists of two parts) . . . . .	ET1803-210	
	for ET3803SH3 . . . . .	ET3803-3		32	Coupling Housing Cap Seal . . . . .	R38-311	
	for all others . . . . .	R3801-3		32A	Cap Seal Retaining Washer Assembly . . . . .	ET1804-A250A	
5	Front End Plate . . . . .	ET3802-11		32B	Retaining Washer Seal . . . . .	WFS182-211	
6	Rear End Plate . . . . .	R3801-12		32C	Retaining Washer Inner Seal . . . . .	ET1804-167	
7	Cylinder Dowel . . . . .	R38KT-198		33	Coupling Housing Cap Screw (3) . . . . .	ROH-354	
●	8	Vane Packet (set of 6 Vanes) . . . . .	R38-42-6	34	Large Coupling Housing Plug . . . . .	R2-227	
●	9	Front Rotor Bearing . . . . .	R1-24A	35	Small Coupling Housing Plug . . . . .	502-95	
●	10	Rear Rotor Bearing . . . . .	R1-24	●	*	Silicone Fluid (1 pound can) . . . . .	ET1803-400-1
	11	Rotor Bearing Retaining Washer . . . . .	ET3803-119	37	Backhead . . . . .	ET3803-102	
	12	Rotor Bearing Retaining Nut . . . . .	ET3803-639	38	Backhead Gasket . . . . .	ET3803-283	
	13	Rear End Plate Gasket . . . . .	R3801-739	39	Backhead Screw (4) . . . . .	ROH-354	
	14	Cylinder Housing . . . . .	ET3803-2	*	Coupling Housing Nameplate . . . . .	ET3803-301A	
	15	Cylinder Housing Pin (4) . . . . .	JC3350-538	*	Nameplate Screw (2) . . . . .	C32-302	
	16	Motor Lock Nut . . . . .	ET3802-207	40	Gear Case Assembly . . . . .	ET3802P-A37	
	17	Main Motor Bearing . . . . .	ET3802-25	41	Grease Plug . . . . .	R1-188	
	18	Motor Clamp Washer (2) . . . . .	ET3802-206	42	Grease Plug Washer . . . . .	R3-92A	
	19	Coupling Driver . . . . .	ET3802-581				
	20	Coupling Driver Screw (3) . . . . .	34U-463				
	21	Coupling Driver Gasket . . . . .	ET3802-483				

\* Not illustrated.

● To keep downtime to a minimum, it is desirable to have on hand certain repair parts. We recommend that you stock one (pair or set) of each part indicated by a bullet (●) for every four tools in service.

PART NUMBER FOR ORDERING

PART NUMBER FOR ORDERING

43	Gear Case Cap Screw (3) . . . . .	G57T-634	51	Gear Head Spacer . . . . .	R38P-80
44	Gear Case Screw Lock Washer (3) . . . . .	8U-58		Spindle Assembly	
45	Motor Housing Cap Screw (3) . . . . .	R0H-354		for ET3803QH3 . . . . .	ET3803Q-A8
*	Seal Installation Tool (for illustration			for all others. . . . .	ET3803R-A8
	No. 31) . . . . .	ET1803-43	52	Spindle	
*	Seal Installation Tool (for illustration			for ET3803QH3 . . . . .	ET3803Q-8
	No. 23) . . . . .	ET3802-43		for all others. . . . .	ET3803R-8
*	Bearing Inserting Tool (for illustration		■ 53	Spindle Planet Gear (3)	
	No. 49) . . . . .	38826		for ET3803QH3 . . . . .	ET3803Q-9
	Gear Head Assembly			for all others. . . . .	ET3802U-9
	for ET3803QH3 . . . . .	ET3803Q-A216	■ 54	Planet Gear Roller (15 for each Gear) . . . . .	ET3802P-654
	for ET3803RH3 . . . . .	ET3803R-A216	■ 55	Planet Gear Roller Retainer (2 for each	
	for ET3803SH3 . . . . .	ET3803S-A216		Gear) . . . . .	ET3802P-655
	for ET3803UH3 . . . . .	ET3802U-A216	56	Planet Gear Shaft (3) . . . . .	ET3803-191
46	Gear Head		57	Spindle Rear Bearing . . . . .	R38P-97
	for ET3803QH3 . . . . .	ET3803Q-216	58	Spindle Front Bearing . . . . .	ET1803-593
	for ET3803RH3 . . . . .	ET3803R-216	59	Spindle Adapter Retainer . . . . .	5UT-762
	for ET3803SH3 . . . . .	ET3803S-216	60	Spindle Bearing Retainer . . . . .	FMC2-280
	for ET3803UH3 . . . . .	ET3802U-216	*	1/2" Square Drive Socket Adapter . . . . .	ET1803P-212
47	Gear Head Planet Gear (2)		*	5/8" Square Drive Socket Adapter . . . . .	ET1803U-212
	for ET3803QH3 and				
	ET3803RH3 . . . . .	R380Q-10			
	for ET3803SH3 . . . . .	WBT380NL-A10			
	for ET3803UH3 . . . . .	4E-10A			
48	Planet Gear Bearing (1 for each Gear) . . . . .	8U-654			
49	Planet Gear Shaft (2) . . . . .	8U-191			
50	Gear Head Bearing . . . . .	4E-510			

\* Not illustrated.

■ If it becomes necessary to order new Spindle Planet Gears (53), also order and install a complete set of Planet Gear Rollers (54) and Planet Gear Roller Retainers (55).