

SERIES ET1804 EQUI-TORQ® AIR MOTORS

FOR TOP PERFORMANCE AND MAXIMUM DURABILITY OF PARTS, OPERATE THESE MOTORS USING 1/2" (13 mm) HOSE AT A MAXIMUM OF 85 psig (5.9 bar) AIR PRESSURE AT THE MOTOR. HIGHER PRESSURES WILL ACCELERATE WEAR.

LUBRICATION

Oil: Ingersoll-Rand Pneu-Lube® Medium Oil No. 50 or a good quality SAE 20 or 20W motor oil.

Grease: Ingersoll-Rand Light Grease No. 28 or a good quality No. 2 cup grease.

Ingersoll-Rand Single Point Lubricators offer the best method for positive displacement injection to lubricate the motor.

After each 50 000 cycles remove the Grease Plug (41) from the Gear Case and inject 1 to 1.5 cc of grease.

REPAIR SERVICE

We recommend that, for service or replacement of repair parts, these Motors be returned to Automatic Production Systems Division, Ingersoll-Rand Company, 23400 Halstead Road, Farmington, Michigan 48024.

Notice: The use of other than genuine Ingersoll-Rand replacement parts may result in decreased tool performance and increased maintenance, and may, at the Company's option, invalidate all warranties.

Refer All Communications to the Nearest
Ingersoll-Rand Office or Distributor.

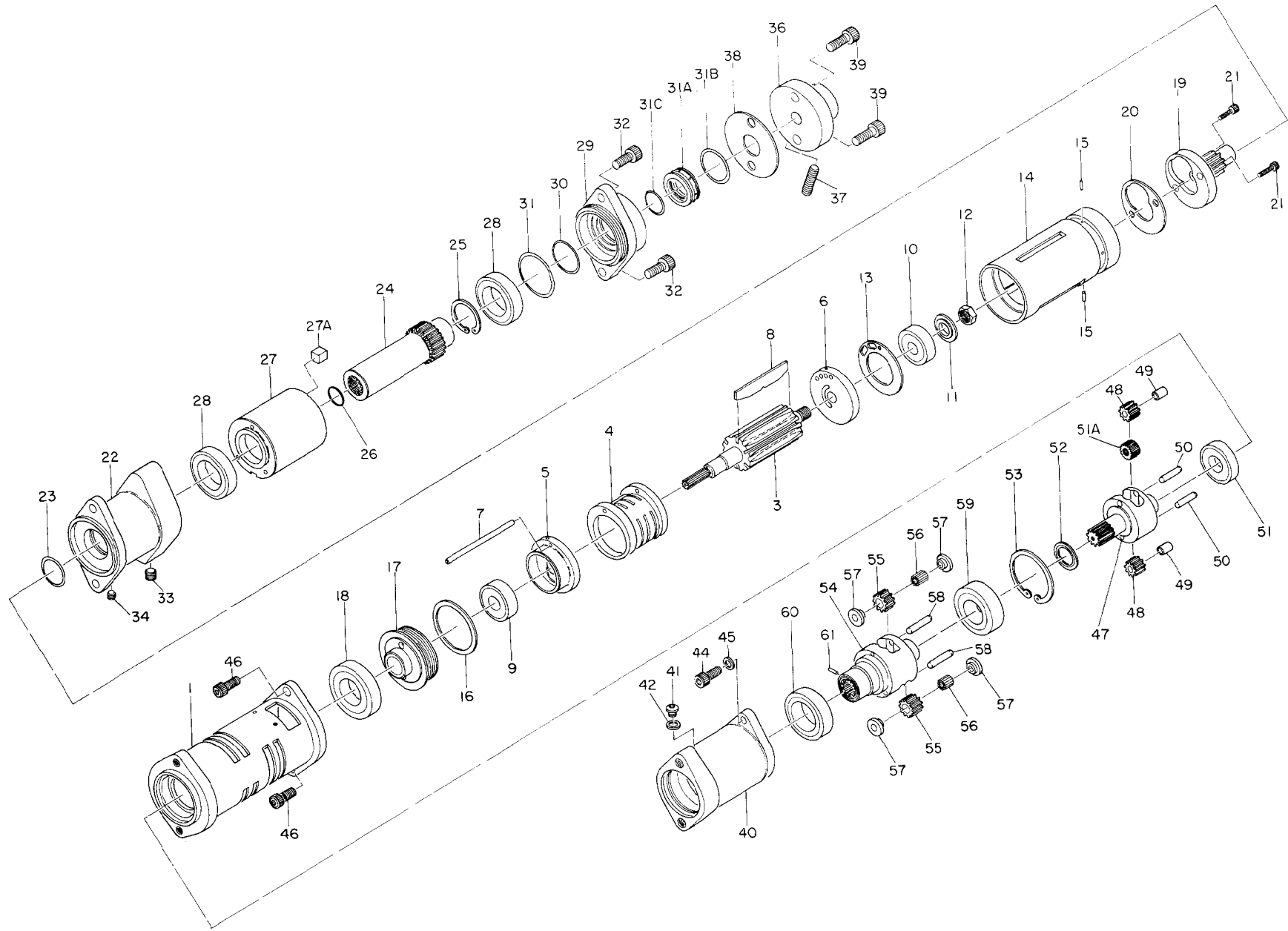
© Ingersoll-Rand Company 1981

Printed in U.S.A.

INGERSOLL-RAND®
PROFESSIONAL TOOLS

P
A
R
T
S

B
U
L
L
E
T
I
N



Series ET1804 Equi-Torq Motors

PART NUMBER FOR ORDERING

PART NUMBER FOR ORDERING

1	Motor Housing	ET1803-40A		Coupling Assembly	ET1804-A580A
*	Motor Housing Nameplate	ET1804-301A	22	Coupling Housing Assembly	ET1804-B580
*	Nameplate Screw (2)	BN403-302	● 23	Coupling Shaft Seal (consists of 2 parts)	ET1803-210
	Motor Assembly		23A	Housing Seal Retaining Washer	ET1804-209
	for ET1804QH3	ET1804Q-A53	23B	Retaining Ring	ET1804-211
	for ET18043QH3	ET18043Q-A53	24	Coupling Shaft Assembly	ET1803-A416
	for ET1804PII3, ET1804UH3		25	Coupling Shaft Snap Ring	C6H20A-6
	and ET1804WH3	ET1804U-A53	● 26	Coupling Driver Seal	410-283
3	Rotor		27	Coupling	ET1803-587
	for ET1804QH3 and		27A	Reservoir Compression Cube (4)	ET1804-100
	ET18043QH3	ET1804Q-53	28	Coupling Bearing (2)	WLT160N-163
	for ET1804UH3 and		29	Coupling Housing Cap Assembly	ET1804-A202A
	ET1804WH3	ET1804U-53	● 30	Coupling Shaft Seal (consists of 2 parts)	ET1803-210
4	Cylinder		31	Coupling Housing Cap Seal	AF160-291Z
	for ET18043QH3	ET18033Q-3	31A	Cap Seal Retaining Washer Assembly	ET1804-A250A
	for all others	R1802-3	● 31B	Retaining Washer Seal	WFS182-211
5	Front End Plate	R1802-11	● 31C	Retaining Washer Inner Seal	ET1804-167
6	Rear End Plate	R1802-12	32	Coupling Housing Cap Screw (2)	G57T-634
7	Cylinder Dowel	R18-98	33	Large Coupling Housing Plug	R2-227
● 8	Vane Packet (set of 6 Vanes)	R1801-42-6	34	Small Coupling Housing Plug	502-95
● 9	Front Rotor Bearing	R1-24A	● *	Silicone Fluid (1 pound can)	ET1803-400-1
● 10	Rear Rotor Bearing	R1-24	36	Backhead Assembly	ET1803-A102
11	Rotor Bearing Retaining Washer	ET3803-119	37	Speed Regulating Screw	ET1803-249
12	Rotor Bearing Retaining Nut	ET3803-639	38	Backhead Gasket	ET1804-283
13	Rear End Plate Gasket	R1802-740	39	Backhead Cap Screw (2)	ROH-354
14	Cylinder Housing	ET1804-2	*	Coupling Housing Nameplate	ET1804-301A
15	Cylinder Housing Pin (4)	JC3350-538	*	Nameplate Screw (2)	C32-302
16	Front End Plate Gasket	R1801-739	40	Gear Case Assembly	ET1803P-A37
17	Motor Lock Nut	ET1803-207	41	Grease Plug	R00A-95
18	Main Motor Bearing	834-24	42	Grease Plug Washer	R3-92A
19	Coupling Driver	ET1804-581	44	Gear Case Cap Screw (2)	ROH-354
20	Coupling Driver Gasket	ET1804-483	45	Gear Case Screw Lock Washer (2)	8U-58
21	Coupling Driver Screw (2)	ET1803-634	46	Motor Housing Cap Screw (2)	G57T-634

* Not illustrated.

● To keep downtime to a minimum, it is desirable to have on hand certain repair parts. We recommend that you stock one (pair or set) of each part indicated by a bullet (●) for every four tools in service.

PART NUMBER FOR ORDERING

PART NUMBER FOR ORDERING

	Gear Head Assembly for ET1804PH3	ET1803P-A216	53	Spindle Bearing Retainer	R1AP-118
	for ET1804QH3 and ET18043QH3.	ET1803Q-A216		Spindle Assembly for ET1804WH3	ET1803W-A8A
	for ET1804UH3	ET1803U-A216		for all others.	ET1803P-A8A
	for ET1804WH3	ET1803W-A216	54	Spindle for ET1804WH3	ET1803W-8A
47	Gear Head for ET1804PH3	ET1803P-216		for all others.	ET1803P-8A
	for ET1804QH3 and ET1804QH3.	ET1803Q-216	55	Spindle Planet Gear (3) for ET1804WH3 (19 teeth)	ET1803W-9
	for ET1804UH3	ET1803U-216		for all others (17 teeth)	ET1803P-9
	for ET1804WH3	ET1803W-216	56	Planet Gear Roller (15 for each Gear)	ET1803-654
48	Gear Head Planet Gear (2) for ET1804PH3	R1801P-10	57	Planet Gear Roller Retainer (2 for each Gear)	ET1803-655
	for ET1804QH3 and ET18043QH3.	R1801Q-10	58	Planet Gear Shaft (3)	13SR-264
	for ET1804UH3 and ET1804WH3	R1801U-10	59	Spindle Rear Bearing	R1AP-97
49	Planet Gear Bearing (1 for each Gear)	R1AL-654	60	Spindle Front Bearing	ET1803-593
50	Planet Gear Shaft (2)	R1A-191	61	Spindle Adapter Retainer	5UT-762
51	Gear Head Bearing.	4E-510	*	1/2" Square Drive Socket Adapter.	ET1803P-212
51A	Rotor Pinion (for ET1804PH3 or ET18043QH3)	R1801P-17	*	5/8" Square Drive Socket Adapter.	ET1803U-212
52	Gear Head Spacer	R1AP-80	*	Seal Installation Tool (for Illustration No. 30).	ET1803-43
			*	Bearing Inserting Tool (for Illustration No. 49).	38826

* Not illustrated.