

# SERIES MOV005 REVERSIBLE MULTI-VANE<sup>®</sup> MOTORS

Model MOV005AA 1/2 H. P. (0.37 kW); Combination Foot and Face Mounting

Model MOV005AB 1/2 H. P. (0.37 kW); NEMA Type C Flange Mounting

Form P6039  
Edition 4  
February, 1989

**Always operate, inspect and maintain this tool in accordance with American National Standards Institute Safety Code for Portable Air Tools (ANSI B186.1) and any other applicable safety codes and regulations.**

**FOR TOP PERFORMANCE AND MAXIMUM DURABILITY OF PARTS, OPERATE THIS TOOL AT 90 psig (6.2 bar/620 kPa) AIR PRESSURE WITH 5/16" (8 mm) AIR SUPPLY HOSE.**

## WARNING

Always turn off the air supply and disconnect the air supply hose before installing, removing or adjusting any accessory on this Motor, or before performing any maintenance on this Motor. Failure to do so could result in injury.

## LUBRICATION

Oil: Ingersoll-Rand No. 10 Lubricant.

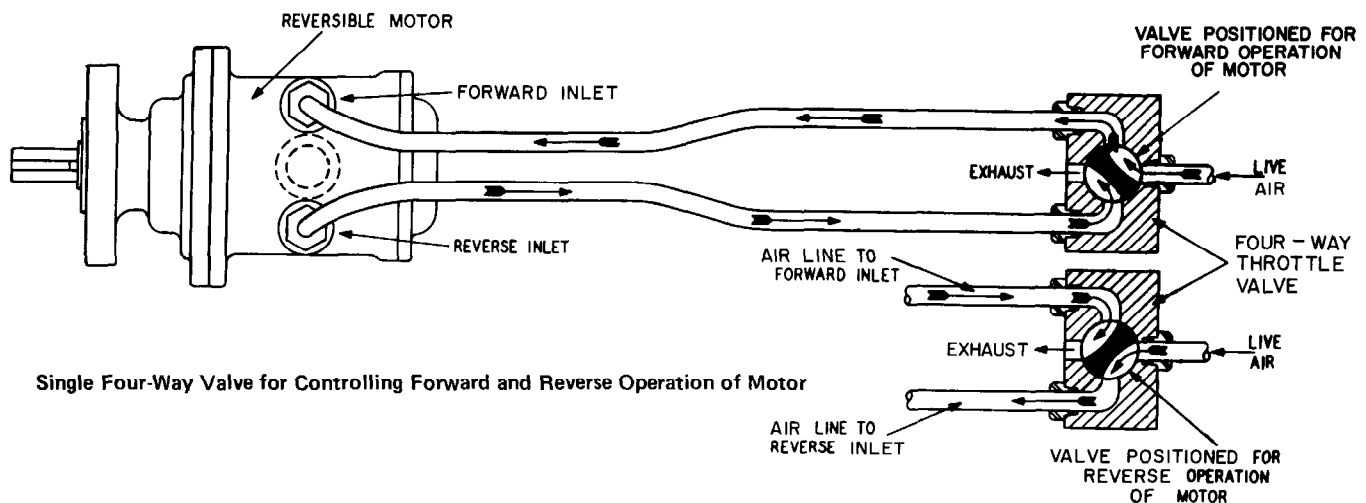
Grease: Ingersoll-Rand No. 28 Lubricant.

We recommend the use of an air line lubricator in the air supply line. Attach the unit as close to the Motor as practical. Where the lubricator cannot be permanently mounted, we recommend using an Ingersoll-Rand No. L10-03-000 Lubricator. For permanent installations, we recommend using an Ingersoll-Rand No. C11-03-G00 Filter-Lubricator-Regulator Unit. These units have 3/8" pipe tap inlet and outlet and 5/16 pint (148 mL) oil capacity. Larger capacity units may be used, but do not use a unit having less than a 3/8" pipe tap inlet and outlet. Adjust the lubricator so there is a slight oil mist in the exhaust.

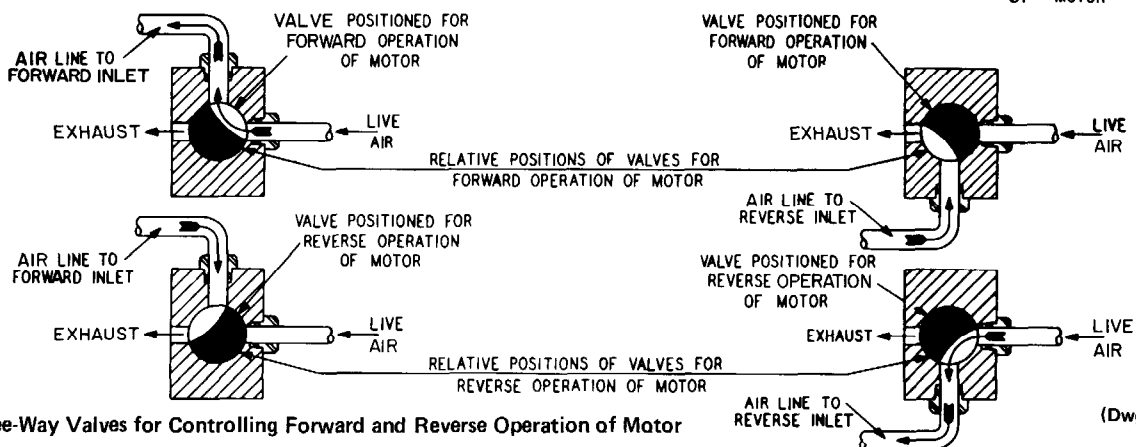
Whenever the Motor is disassembled for maintenance or repair, lubricate the Rotor Bearings (15) with the recommended grease.

## NOTICE

When these motors are used on applications requiring a reversible motor, a 4-way throttle valve or two 3-way throttle valves must be used in the air supply line in accordance with the following schematic diagram. When the application requires a nonreversible motor, a 2-way in-line valve can be used in the air supply line. In either case, the inlet and outlet of the valve must be equal in size, and preferably one size larger, than the inlet of the motor.



Single Four-Way Valve for Controlling Forward and Reverse Operation of Motor



Two Three-Way Valves for Controlling Forward and Reverse Operation of Motor

(Dwg. TPB256)

## NOTICE

The use of other than genuine Ingersoll-Rand replacement parts may result in decreased Motor performance and increased maintenance, and may invalidate all warranties.

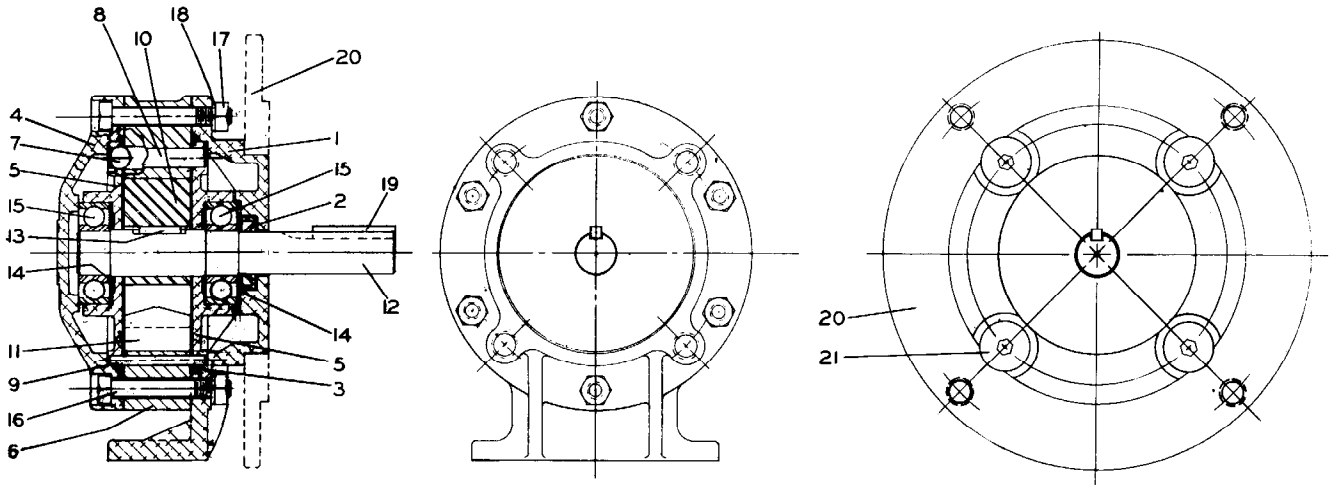
Refer All Communications to the Nearest  
Ingersoll-Rand Office or Distributor.

© Ingersoll-Rand Company 1989

Printed in U.S.A.

**INGERSOLL-RAND**  
**AIR MOTORS**

PARTS BULLETIN



(Dwg. TPB395)

PART NUMBER FOR ORDERING

PART NUMBER FOR ORDERING

1	Fronthead Assembly with integral base for foot mounting . . . . .	MOV003AA-A240	12	Rotor Shaft . . . . .	MOV003AA-52
	without base. . . . .	MOV003AB-A240	13	Rotor Key . . . . .	501-410
• 2	Fronthead Oil Seal . . . . .	MOV010AA-271	14	Rotor Bearing Thrust Spring (2) . . . . .	MOV003AA-278
• 3	O-ring (2) . . . . .	MOV003AA-739	• 15	Rotor Bearing (2) . . . . .	T06-24
4	Backhead . . . . .	MOV003AA-102	16	Through Bolt (6) . . . . .	R3H-57
• 5	End Plate (2) . . . . .	MOV003AA-11	17	Through Bolt Nut (6) . . . . .	G8-120A
• 6	Cylinder . . . . .	MOV005AA-3	18	1/4" Lock Washer (6) . . . . .	F-58
7	Check Ball (4) . . . . .	514-929-10	19	Shaft Key . . . . .	J5-754
8	Large End Plate Dowel . . . . .	H54U-551	20	NEMA Type C Mounting Flange (Stand- ard for Model MOV005AB) . . . . .	MOV010AB-580
9	Small End Plate Dowel . . . . .	1H0-281	21	Mounting Flange Cap Screw (4) (Standard for Model MOV005AB) . . . . .	MOV010AB-490
10	Rotor . . . . .	MOV003AA-53	*	Muffler . . . . .	MOV010AA-674
• 11	Vane Packet (set of 5 Vanes) . . . . .	MOV003AA-42-5			

\* Not illustrated.

• To keep downtime to a minimum, it is desirable to have on hand certain repair parts. We recommend that you stock one (pair or set) of each part indicated by a bullet (•) for every four tools in service.