

ASSEMBLY MACHINE AIR MOTORS

**Sizes 1801P2, 1801Q2, 1801U2 and 1801W2 Nonreversible
 Sizes 1811P2, 1811Q2,
 1811U2 and 1811W2 Nonreversible with Offset Head
 Sizes 1841P2, 1841Q2, 1841U2 and 1841W2 Reversible
 Sizes 1851P2, 1851Q2,
 1851U2 and 1851W2 Reversible with Offset Head**

MAINTENANCE TOOLS

TOOL NUMBER FOR ORDERING	TOOL NAME FOR ORDERING	OPERATION
P25-228	Grease Gun	Inserting grease into the Gear Case (28), the Offset Gear Housing (44) and Spring Loading Attachment Housing (65).
38823	Bearing Inserting Tool	Installing the Spindle Planet Gear Bearings (35) in the Spindle Planet Gears (34) in all Sizes, and the Gear Head Planet Gear Bearings (24) in the Gear Head Planet Gears (23) in "Q" and "U" ratio Motors.

HOW TO ORDER

Order all repair parts for your Ingersoll-Rand Tool by the **NAME** and **NUMBER** shown in the Repair Part List section. **Never** use the illustration numbers which appear in the first column.

For prompt service and genuine Ingersoll-Rand parts, place orders with the nearest Ingersoll-Rand Office or Authorized Distributor.

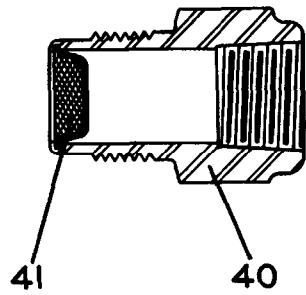
Notice: The use of other than genuine Ingersoll-Rand replacement parts may result in decreased tool performance and increased maintenance, and may, at the Company's option, invalidate all warranties.

Refer All Communications to the Nearest
 Ingersoll-Rand Office or Distributor.
 ©Ingersoll-Rand Company 1978
 Printed in U.S.A.

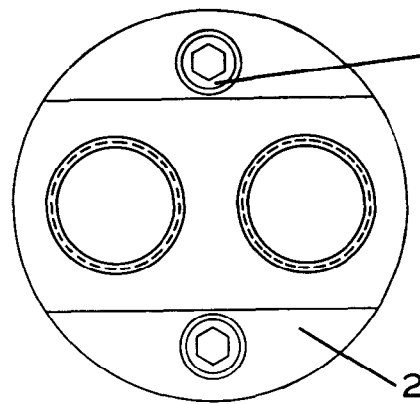


P
A
R
T
S

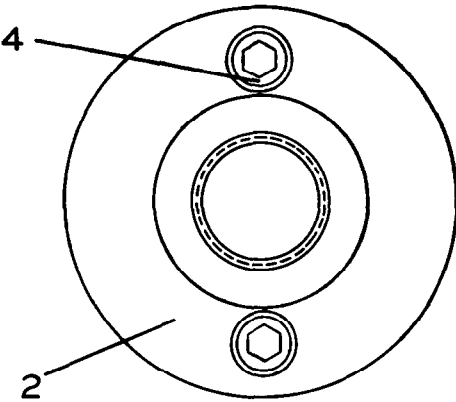
B
U
L
L
E
T
I
N



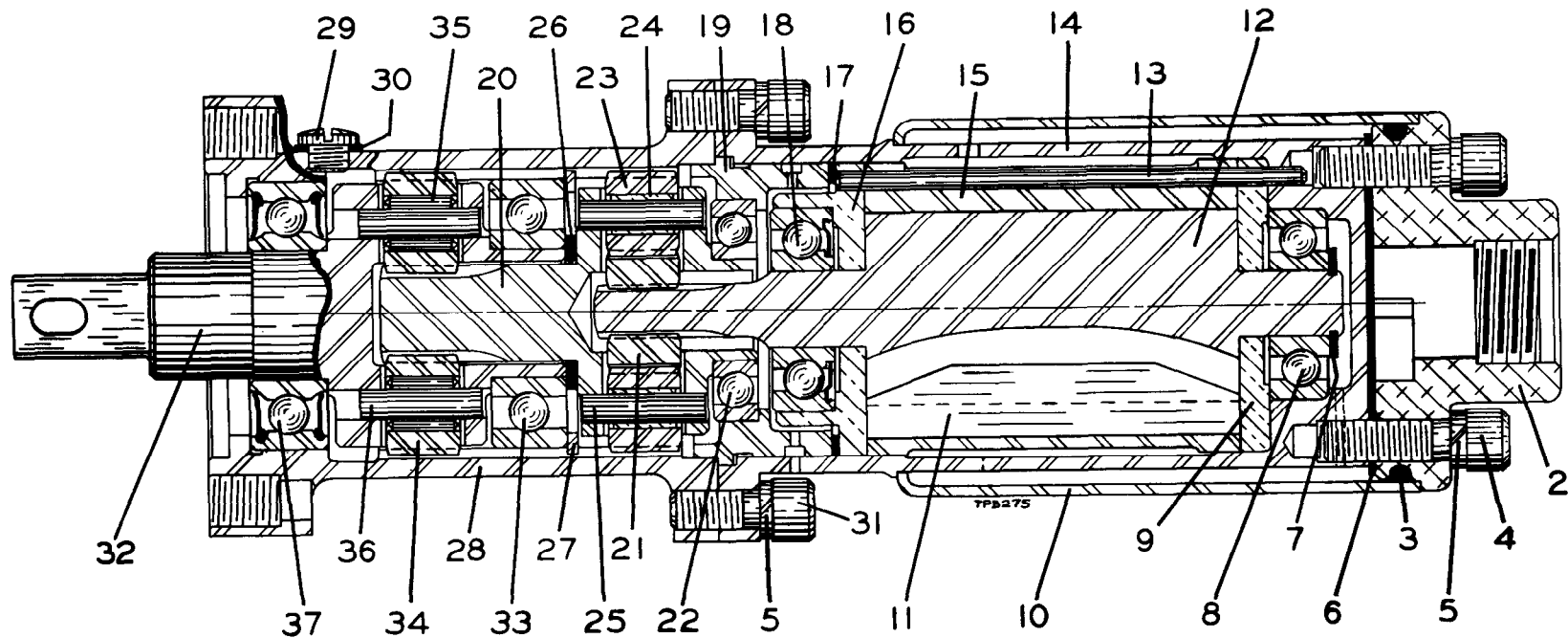
AIR STRAINER



BACK HEAD USED ON REVERSIBLE MOTORS



BACK HEAD USED ON NON-REVERSIBLE MOTORS



1806 or 1841 Assembly Machine Air Motor

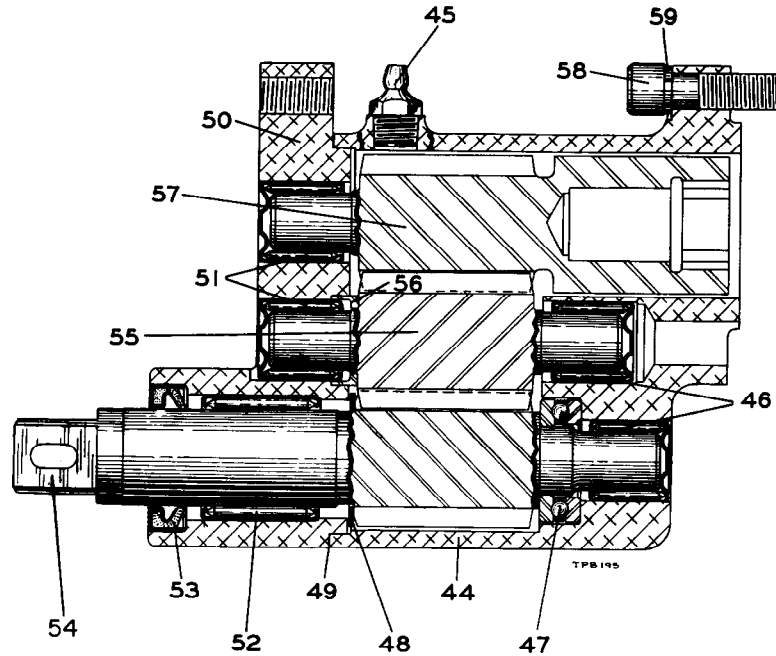
PART NUMBER FOR ORDERING

PART NUMBER FOR ORDERING

2	Backhead For Series 1801 and 1811 For Series 1841 and 1851	R1801-102 R1841-102	24	Gear Head Planet Gear Bushing (2) (For "P" ratio)	R1AH-500
3	Exhaust Deflector Seal	R10V-310	25	Gear Head Planet Gear Shaft (2)	R1A-191
4	Backhead Cap Screw (2)	510-638	26	Gear Head Spacer	R1AP-80
5	Lock Washer (4)	8U-58	27	Spindle Bearing Retainer	R1AP-118
6	Backhead Gasket For Series 1801 and 1811 For Series 1841 and 1851	R1801-283 R1841-283	28	Gear Case	R1801P-37
7	Rotor Bearing Retainer	404-118	29	Grease Plug	R00A-95
• 8	Rear Rotor Bearing	R1-24	30	Grease Plug Washer	R3-92A
9	Rear End Plate	R1801-12A	31	Gear Case Cap Screw (2)	G57T-634
★ 10	Exhaust Deflector	R1801-23		Spindle Assembly For "P", "Q" or "U" ratio with No. R1801P-8 Spindle with No. R1801P-308-1 Spindle	R1801P-A8 R1801P-A308-1
• 11	Vane Packet (Set of 5)	R1801-42-5		For "W" ratio with No. R1801W-8 Spindle with No. R1801W-308-1 Spindle	R1801W-A8 R1801W-A308-1
12	Rotor For "P", "U" or "W" ratio (7 teeth) For "Q" ratio (11 teeth)	R1801P-53 R1801Q-53	32	Spindle For "P", "Q" or "U" ratio 1/2" square drive (standard) 1/2" square drive (1" longer than standard)	R1801P-8 R1801P-308-1
13	Cylinder Dowel	R18-98		For "W" ratio 5/8" square drive (standard) 5/8" square drive (1" longer than standard)	R1801W-8 R1801W-308-1
★ 14	Motor Housing	R1801-40	• 33	Spindle Rear Bearing	R1AP-97
15	Cylinder For Series 1801 and 1811 For Series 1841 and 1851	R1801-3 R1841-3	34	Spindle Planet Gear (3) For "P", "Q" or "U" ratio (17 teeth) For "W" ratio (19 teeth)	R1801P-9 R1801W-9
16	Front End Plate	R1801-11	35	Spindle Planet Gear Bearing (3)	R1AL-645
17	End Plate Gasket	R1801-739	36	Spindle Planet Gear Shaft (3)	R1801-190
• 18	Front Rotor Bearing	R1-24A	• 37	Spindle Front Bearing	4UA9-593
19	Bearing Cage	R1801-113	40	Air Strainer (1 for Series 1801 or 1811; 2 for Series 1841 or 1851)	R18-465A
	Gear Head Assembly For "P" ratio For "Q" ratio For "U" ratio For "W" ratio	R1801P-A216 R1801Q-A216 R1801U-A216 R1801W-A216	41	Air Strainer Screen (1 for each strainer)	402-61
20	Gear Head For "P" ratio For "Q" ratio For "U" ratio For "W" ratio	R1801P-216 R1801Q-216 R1801U-216 R1801W-216		Offset Head Assembly For "P", "Q" or "U" ratio For "W" ratio	R1811P2-A147 R3810P2-A147
21	Rotor Pinion (For "P" ratio) (21 teeth)	R1801P-17	44	Offset Gear Housing	R3810-147
22	Gear Head Bearing	4E-510	45	Grease Fitting	23-188
23	Gear Head Planet Gear (2) For "P" ratio (14 teeth) For "Q" ratio (19 teeth) For "U" or "W" ratio (21 teeth)	R1801P-10 R1801Q-10 R1801U-10	• 46	Gear Housing Bearing (Torrington No. M9121 or its equivalent) (2)	R3810-143
	Gear Head Planet Gear Bearing (2) (For "Q", "U" or "W" ratio)	R1AL-654	• 47	Socket Driver Thrust Bearing (Norma-Hoffman DL-15 or its equivalent)	R3810-105
24			48	Socket Driver Thrust Washer	R3810-706
			49	Gear Housing Cover Gasket	R3810-592
			50	Offset Gear Housing Cover	R3810-148

★ **IMPORTANT:** The complete size symbol stamped on these parts must be stated when ordering a replacement Motor Housing or Exhaust Deflector.

• To keep downtime to a minimum, it is desirable to have on hand certain repair parts. We recommend that you stock one (pair or set) of each part indicated by a bullet (•) for every four tools in service.



Offset Head Assembly

PART NUMBER FOR ORDERING

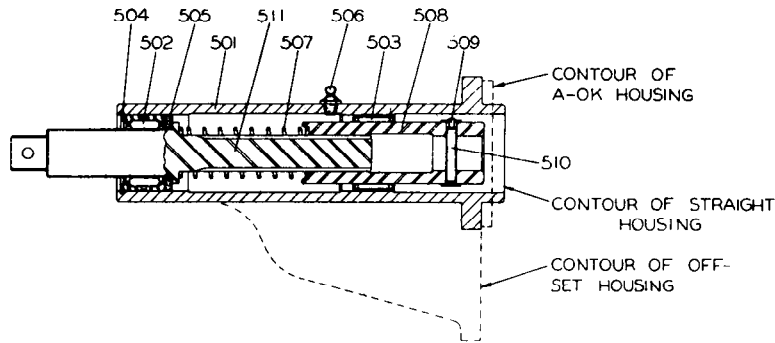
PART NUMBER FOR ORDERING

• 51	Gear Housing Cover Bearing (Torrington No. M9121 or its equivalent) (2)	R3810-143	57	Drive Gear	R1811-146
• 52	Socket Driver Front Bearing (Torrington No. B-1316 or its equivalent)	R3810-593	*	For "P", "Q" or "U" ratio	R3810-146
• 53	Socket Driver Seal	R3810-271	*	For "W" ratio	510-638
54	Socket Driver		*	Housing Cover Small Cap Screw (2)	R3810-126
	1/2" Square Drive	R1811-145-1/2	*	Housing Cover Large Cap Screw (2)	8U-58
	5/8" Square Drive	R3810-145-5/8	58	1/4" Lock Washer (2)	34U-58
55	Intermediate Gear	R3810-142	59	5/16" Lock Washer (2)	34U-103
56	Intermediate Gear Spacer	R3810-149		Housing Cap Screw (2)	34U-58
				5/16" Lock Washer (2)	

* Not illustrated.

• To keep downtime to a minimum, it is desirable to have on hand certain repair parts. We recommend that you stock one (pair or set) of each part indicated by a bullet (•) for every four tools in service.

SPRING LOADING ATTACHMENTS



GUIDED SPRING LOADING ATTACHMENTS

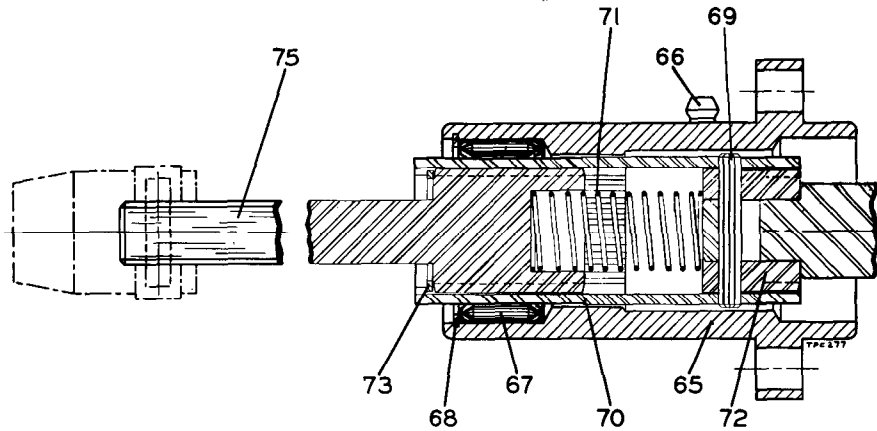
These are new Spring Loading Attachments. Before ordering repair parts for an Attachment now in service, make certain you have properly identified that Attachment.

Repair parts for the superseded Spring Loading Attachments remain available.

		PART NUMBER FOR ORDERING	
		For "P", "Q" or "U" ratio	For "W" ratio
	Guided Spring Loading Attachment		
	Standard Length Driver; Straight Housing	R1801-A504-1	R3800-A504-1
	1" Extended Driver; Straight Housing	R1801-A504-2	R3800-A504-2
	2" Extended Driver; Straight Housing	R1801-A504-3	R3800-A504-3
	Standard Length Driver; Offset Housing	R1811-A504-1	R3810-A504-1
	1" Extended Driver; Offset Housing	R1811-A504-2	R3810-A504-2
	2" Extended Driver; Offset Housing	R1811-A504-3	R3810-A504-3
	Standard Length Driver; A-OK Housing	R1801-A604-1	R3800-A604-1
	1" Extended Driver; A-OK Housing	R1801-A604-2	R3800-A604-2
	2" Extended Driver; A-OK Housing	R1801-A604-3	R3800-A604-3
501	Housing Assembly		
	Straight Housing	R3800-A505	R3800-A505
	Offset Housing	R3810-A505	R3810-A505
	A-OK Housing	R3800-A605	R3800-A605
• 502	Driver Front Bearing (Torrington B-1812)	R3800-509	R3800-509
• 503	Driver Rear Bearing (Torrington HF-142212)	R3800-510	R3800-510
504	Snap Ring	R3800-508	R3800-508
505	Driver Thrust Plate	R3800-511	R3800-511
506	Grease Fitting	R1-188	R1-188
507	Spring	R3800-127	R3800-127
508	Coupling	R1801-506	R3800-506
509	Pin Retainer	R3800-628	R3800-628
510	Coupling Pin	MP1-15A	MP1-15A
511	Driver		
	Standard Length	R1800-507-1	R3800-507-1
	1" Extension	R1801-507-2	R3800-507-2
	2" Extension	R1801-507-3	R3800-507-3

• To keep downtime to a minimum, it is desirable to have on hand certain repair parts. We recommend that you stock one (pair or set) of each part indicated by a bullet (•) for every four tools in service.

SUPERSEDED SPRING LOADING ATTACHMENT
For Size 1801P2, 1801Q2, 1801U2, 1841P2, 1841Q2 or 1841U2 Motor

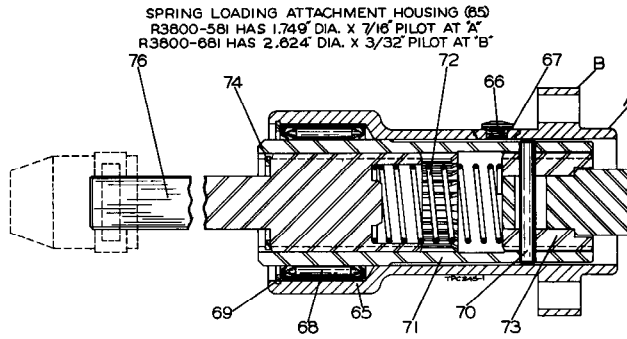


PART NUMBER FOR ORDERING

65	Spring Loading Attachment Housing	R1801-581
66	Grease Fitting	R1-188
• 67	Spindle Sleeve Bearing (Torrington No. B1910 or its equivalent)	R1801-606
68	Sleeve Bearing Retainer	R1801-6
69	Spindle Pin	R1801-15
70	Spindle Sleeve	R1801-304
71	Spindle Loading Spring (New Style 41/64" dia. x 2-7/8")	R1801-127
72	Drive Collar (New Style)	R1801-306A
73	Collar Retainer	R1801-119A
75	Socket Driver	
	New Style with Integral Drive Collar	
	1" Extension	R1801-407-1
	2" Extension	R1801-407-2
	3" Extension	R1801-407-3

- To keep downtime to a minimum, it is desirable to have on hand certain repair parts. We recommend that you stock one (pair or set) of each part indicated by a bullet (•) for every four tools in service.

SUPERSEDED SPRING LOADING ATTACHMENTS
For Size 1801W2 or 1841W2 Motor



PART NUMBER FOR ORDERING

65	Spring Loading Attachment Housing With Pilot at "A" (see illustration)	R3800-581
	With Pilot at "B" (see illustration)	R3800-681
66	Grease Plug	R00A-95
67	Grease Plug Washer	R3-92A
• 68	Spindle Sleeve Bearing (Torrington No. B2416 or its equivalent)	BU-466
69	Sleeve Bearing Retainer	R3800-6
70	Spindle Pin	R3800-15
71	Spindle Sleeve	R3800-304
72	Spindle Loading Spring (New Style 7/8" dia. x 3-5/8")	R3800-127
73	Drive Collar	R3800-306
74	Socket Driver Retainer	R3800-120
76	Socket Driver (New Style with Integral Drive Collar)	
	1" Extension	R3800-407-1
	3" Extension	R3800-407-3

• To keep downtime to a minimum, it is desirable to have on hand certain repair parts. We recommend that you stock one (pair or set) of each part indicated by a bullet (•) for every four tools in service.

● **Atlanta, Ga.**
111 Ingersoll-Rand Drive
Chamblee, Georgia 30341

★ **Baton Rouge, La.** 70816
4152 Rhoda Drive

★ **Birmingham, Ala.** 35233
1516 Second Ave., South

★ **Boston, Mass.**
2 Kuniholm Dr.
Holliston, Mass. 01746

★ **Buffalo, N. Y.** 14225
195 Sugg Rd.

● **Charlotte, N. C.** 28208
4840 Wilmont Rd.

★ **Chattanooga, Tenn.** 37407
1936 Central Ave.

● **Chicago, Ill.**
888 Industrial Drive
Elmhurst, Illinois 60126

★ **Cincinnati, Ohio**
666 Redna Terrace
Woodlawn, Ohio 45215

★ **Cleveland, Ohio** 44125
9257 Midwest Ave.

★ **Corpus Christi, Texas** 78408
4540 Baldwin Blvd.

● **Dallas, Texas** 75247
8901 Directors Row

★ **Denver, Colo.** 80207
5805 E. 39th Ave.

● **Detroit, Mich.**
22122 Telegraph Road
Southfield, Mich. 48075

Ingersoll-Rand®

Tool & Hoist Division
28 Kennedy Blvd.
East Brunswick, N. J. 08816

★ **Freeport, Texas** 77541
211 Park Place

● **Hartford, Conn.**
60 Progress Drive
Manchester, Conn. 06040

● **Houston, Texas** 77001
6800 Sands Point, P.O. 1455

★ **Indianapolis, Ind.** 46268
5315 West 86th St.

● **Los Angeles, Calif.** 90022
5533 East Olympic Blvd.

● **Milwaukee, Wis.**
N84 W13540 Leon Rd.
Menomonee Falls, Wis.
53051

★ **Minneapolis, Minn.** 55404
Corner Franklin & Cedar

★ **Moline, Ill.** 61265
3901 25 St.

★ **Newark, N. J.**
28 Kennedy Blvd.
East Brunswick, N. J. 08816

● **New Orleans, La.** 70005
939 Lake Ave. Metairie

★ **Peoria, Ill.** 61614
1809 West Chanute Rd.

● **Philadelphia, Pa.**
651 Park Ave.

● **Pittsburgh, Pa.** 15220
6 Parkway Ctr.

★ **Port Arthur, Texas** 77640
5336 Twin City Highway

★ **Portland, Oregon** 97214
240 S. E. Clay St.

★ **Richmond, Va.** 23230
3431 West Leigh St.

★ **San Francisco, Calif.**
14299 Wicks Blvd.
San Leandro, Calif. 94577

● **Seattle, Wash.** 98188
345 Andover Park East

★ **Shreveport, La.** 71106
450 W. 61st St.

● **St. Louis, Mo.** 63132
1515 Page Industrial Blvd.

★ **Tampa, Fla.** 33609
3316 South Westshore Blvd.

Washington, D. C. 20006
1666 K. St., N. W.

● Branch and All Star® Servicerenter.
★ All Star Servicerenter only.

CANADA

Calgary, Alberta, T2R 0E1
611 11th Ave., S. W.

Montreal, Quebec
620 Cathcart St., H3B 1M2
P.O. Box 1148, H3B 3K9

● **Sherbrooke, Quebec**, J1H 3X4
375 Courcellette St.

Sudbury, Ontario, P3A 3T3
P.O. Box 2220

Canadian Ingersoll-Rand Co., Limited
Montreal, Quebec
620 Cathcart St., H3B 1M2
P.O. Box 610, Station B H3B 3K3

● **Toronto**
Don Mills, Ontario M3B 2V1
255 Lesmill Road

● **Vancouver**
British Columbia, V6A 2W7
1695 Main St.

Winnipeg, Manitoba, R3H 0M6
1234 Border St.

● All Star Servicerenter.

5-67

AUTONOMOUS COMPANIES

Argentina, Buenos Aires
Ingersoll-Rand Argentina
S.A.I.y C.
Casilla Correo 2412, Correo Central

Australia, South Melbourne
Ingersoll-Rand (Australia) Ltd.
P.O. Box 219
42 Moray Street, 3205 Victoria

Austria A 1120, Vienna
Ingersoll-Rand Ges M.B.H.
Schoenbrunnerstrasse 213-215/2/5

Belgium, Diegem (Brussels)
Ingersoll-Rand Benelux S.A.
Kouterveldstraat 10-12, 1920 Diegem

Brazil, Sao Bernardo
Ingersoll-Rand S.A. Ind. e Com.
Caixa Postal 911

Chile, Santiago
Ingersoll-Rand Chile
Morande 341
Casilla 126-D

Colombia, Bogota
Macquinarias Ingersoll-Rand
de Colombia, S.A.
Apartado Aero 7451

Denmark, Albertslund DK2620
Ingersoll-Rand AB
Herstedvang 11

Egypt, Cairo
Ingersoll-Rand North East Africa
P.O. Box 820
23A Ismail Mohamed St.
Zamalek

England, London, SW1X, 7LU
Ingersoll-Rand Co., Ltd.
Bowater House, Knightsbridge

France, 78 190 Trappes Yvelines
Compagnie Ingersoll-Rand
Avenue Albert Einstein
Zone Industrielle

Germany, 403 Ratingen
Ingersoll-Rand GmbH
Robt. Zapp Str. 7
Postfach 1380

Greece, Athens 610
Ingersoll-Rand Central Middle East
17th Floor Athens Tower
Mesogion 2-4

Hong Kong
Ingersoll-Rand Far East
19th Floor, Lap Heng House
50, Gloucester Road

India, Bombay 400018
Ingersoll-Rand (India) Private Ltd.
44 Maulana Abdul Gaffar Rd.
P.O. Box 16564, Worli

Iran, Tehran
Ingersoll-Rand Iran
P.O. Box 12-1538

Ireland, Dublin
Ingersoll-Rand Company (Ireland) Ltd.
John F. Kennedy Drive
Bluebell

Italy, 20100 Milano
Ingersoll-Rand Italiana, S.p.A.
Strada Provinciale Cassanese
Caselle Postale 1232
Vignate, Italy

Japan, 106 Tokyo
Ingersoll-Rand (Japan) Ltd.
Kowa Bldg. No. 17
2-7 Nishi-Azabu 1-Chome
Minato-Ku

Kenya, Nairobi
Ingersoll-Rand Mid Africa
P.O. Box 14240

Malaysia, Petaling Jaya
Ingersoll-Rand Malaysia, Sdn. Bhd.
P.O. Box No. 125

Mexico, 10 D.F. Mexico
Ingersoll-Rand S.A. de C.V.
Apartado 41-666

Netherlands, Zoeterwoude
Ingersoll-Rand Benelux N.V.
P.O. Box 33, Zoeterwoude

Norway, Oslo 1
Ingersoll-Rand AB
P.O. Box 143-Sentrum

Peru, Lima
Ingersoll-Rand Co. of Peru, S.A.
Casilla 2261

Philippines, Makati, Rizal 3117
Ingersoll-Rand Philippines, Inc.
P.O. Box 445 MCC

Portugal, Lisbon 5
Ingersoll-Rand Lda.
Apartado 2933

Puerto Rico, San Juan 00936
Ingersoll-Rand de Puerto Rico Inc.
G.P.O. Box 1222

Singapore 22
Ingersoll-Rand Southeast Asia (Pte.) Ltd.
G.P.O. Box 2062, Singapore 1

South Africa, Alberton
Ingersoll-Rand Co. S.A. (Proprietary) Ltd.
P.O. Box 3720
Alrode, 1451

Spain, Madrid
Cia. Ingersoll-Rand, S.A.
Apartado 518

Sweden, Bromma
Ingersoll-Rand A.B.
Fack
S-16125 Bromma 1

Venezuela, Caracas
Ingersoll-Rand de Venezuela S.A.
Apartado 70588, Los Ruices

5-67

AUTHORIZED I-R SALES AND SERVICE

Distributors in principal cities throughout the world. Contact the nearest Ingersoll-Rand office for the name and address of the distributor in your country or write to Ingersoll-Rand International, Woodcliff Lake, New Jersey.