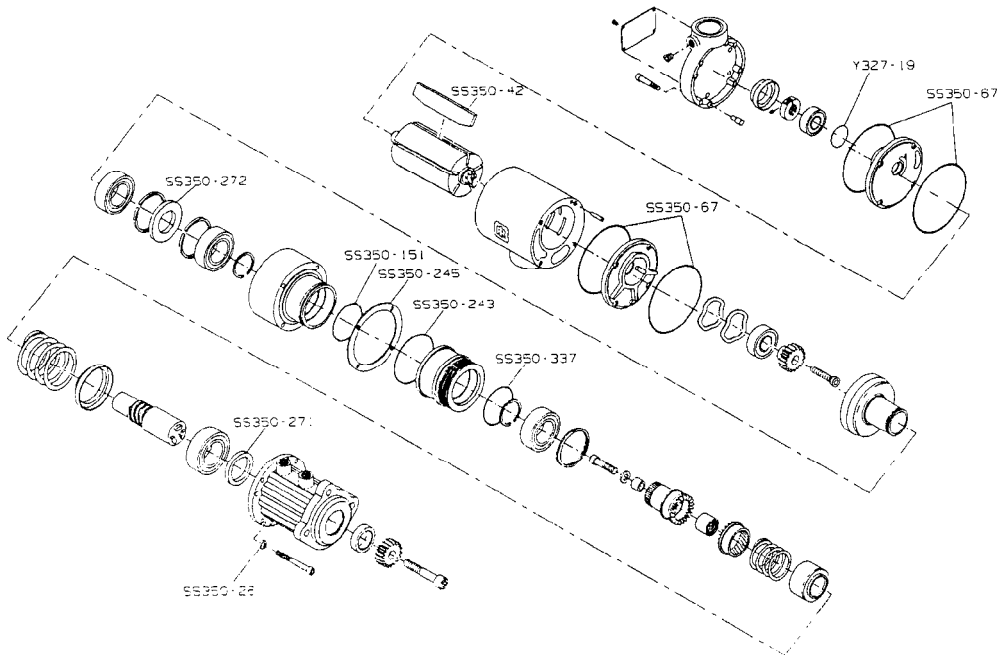


Genuine

Ingersoll-Rand Replacement Parts

SS350-TK1/7W0540 TUNE-UP KIT



(Dwg. TPA1293-1)

This **GENUINE** Ingersoll-Rand Tune-up Kit contains the following parts:

PART NUMBER	PART NAME (Description)	QUANTITY
SS350-67	End Plate O-ring (120 mm O.D.)	4
SS350-42	Vane	5
SS350-151	Gear Case O-ring (65 mm O.D.)	1
SS350-272	Gear Case Seal (metal)	1
SS350-337	Piston O-ring (75 mm O.D.)	1
SS350-271	Drive Housing Seal (metal 40 mm)	1
SS350-243	Drive Housing O-ring (85 mm O.D.)	1
SS350-245	Drive Housing Gasket	1
SS350-26	Drive Housing Washer	4
#Y327-19	Rear Rotor Bearing O-ring	1
SMB-441	Sealant	1

The Rear Rotor Bearing O-ring (Y327-19) is only used in Starters with the first three letters of the serial number RMJ, RMH etc. or lower. Starters with serial numbers RMK, RML etc. or higher do not use the O-ring.

For further information refer to the following form:

Starter Model	SS850
Installation and Maintenance Manual	P6567