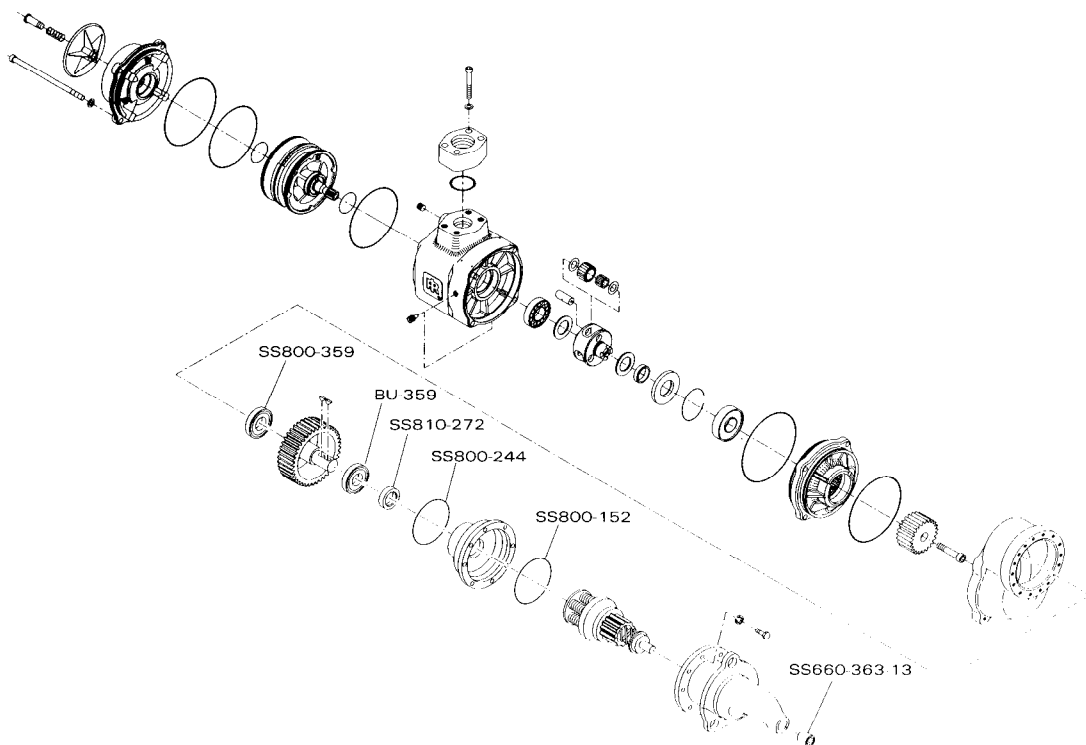


Genuine

Ingersoll-Rand Replacement Parts

ST7001 -TK6 TUNE-UP KIT
(Inertia Models)



(Dwg. TPA1425)

This GENUINE Ingersoll-Rand Tune-up Kit contains the following parts:

PART NUMBER	PART NAME (Description)	QUANTITY
BU-359	Front Drive Gear Bearing	1
SS800-359	Rear Drive Gear Bearing	1
SS800-244	Gear Case Cover O-ring	1
SS810-272	Drive Gear Shaft Seal	1
SS800-152	Drive Housing O-ring	1
SS660-363-13	Drive Housing Bearing	1

For further information, refer to the following form:

Starter Model	ST700
Parts Bulletin	P6921

© Ingersoll-Rand Company 1994
Printed in U.S.A.

INGERSOLL-RAND®
ENGINE STARTING SYSTEMS

Form K7001-6
Edition 1
03540283
January, 1994