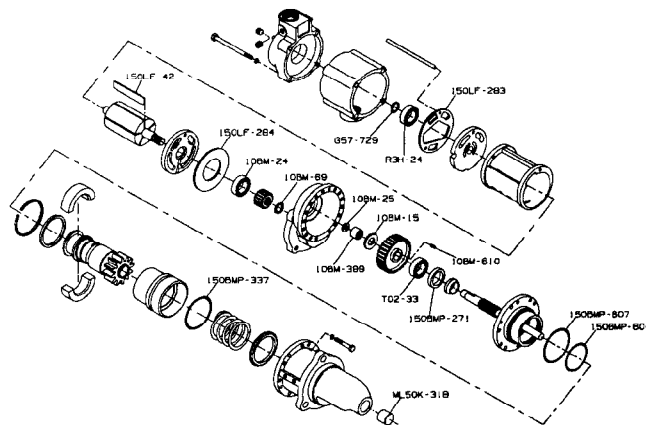


**Genuine**

# Ingersoll-Rand Replacement Parts

**150LF-TK1 TUNE-UP KIT  
150LFP Air Starter (Models C and E)**



(Dwg. TPA1279-2)

This **GENUINE** Ingersoll-Rand Tune-up Kit contains the following parts:

| PART NUMBER | PART NAME (Description)   | QTY |
|-------------|---|-----|
| 10BM-25     | Bearing Ejecting Washer (threaded washer)                               | 1   |
| G57-729     | Rear Rotor Bearing Retainer (snap ring)                                 | 1   |
| R3H-24      | Rear Rotor Bearing (5/8" x 1-7/8" bearing)                              | 1   |
| 10BM-24     | Front Rotor Bearing (3/4" x 2-1/16" shielded bearing)                   | 1   |
| 150LF-283   | Motor Housing Cover Gasket (perforated cork gasket)                     | 1   |
| 150LF-42    | Vane  | 5   |
| 150LF-284   | Gear Case Gasket (plain cork gasket)                                    | 1   |
| 10BM-69     | Rotor Pinion Retainer ("C" ring)  | 1   |
| + 10BM-399  | Drive Shaft Rear Bearing (3/4" I.D. x 1" O.D. x 5/8" lg needle bearing) | 1   |
| 10BM-15     | Drive Gear Thrust Washer (fiber thrust washer)                          | 1   |
| 10BM-610    | Drive Gear Key (1/4" x 1/4" x 5/8" key)                                 | 1   |
| T02-33      | Drive Shaft Front Bearing (3/4" x 1-7/8" open ball bearing)             | 1   |
| 150BMP-271  | Drive Shaft Grease Seal (Garlock seal)                                  | 1   |
| 150BMP-607  | Gear Case Cover Seal (3-1/8" dia. O-ring)                               | 1   |
| 150BMP-604  | Piston Seal (2-7/8" dia. O-ring)  | 1   |
| + ML50K-318 | Drive housing Bearing (3/4" I.D. x 1" O.D. x 3/4" lg roller bearing)    | 1   |
| 150BMP-337  | Piston Ring   | 1   |
| * SMB-431   | Plastic Gasket  | 1   |

\* Not Illustrated.

+ See Form P6903 for correct disassembly and assembly of these bearings.

For further information refer to the following form.

|                                     |                       |
|-------------------------------------|-----------------------|
| Starter Model                       | 150LFP Models C and E |
| Installation and Maintenance Manual | P6903                 |

**INGERSOLL-RAND®**  
**ENGINE STARTING SYSTEMS**

Form K6903  
Edition 4  
03537420  
April, 1998