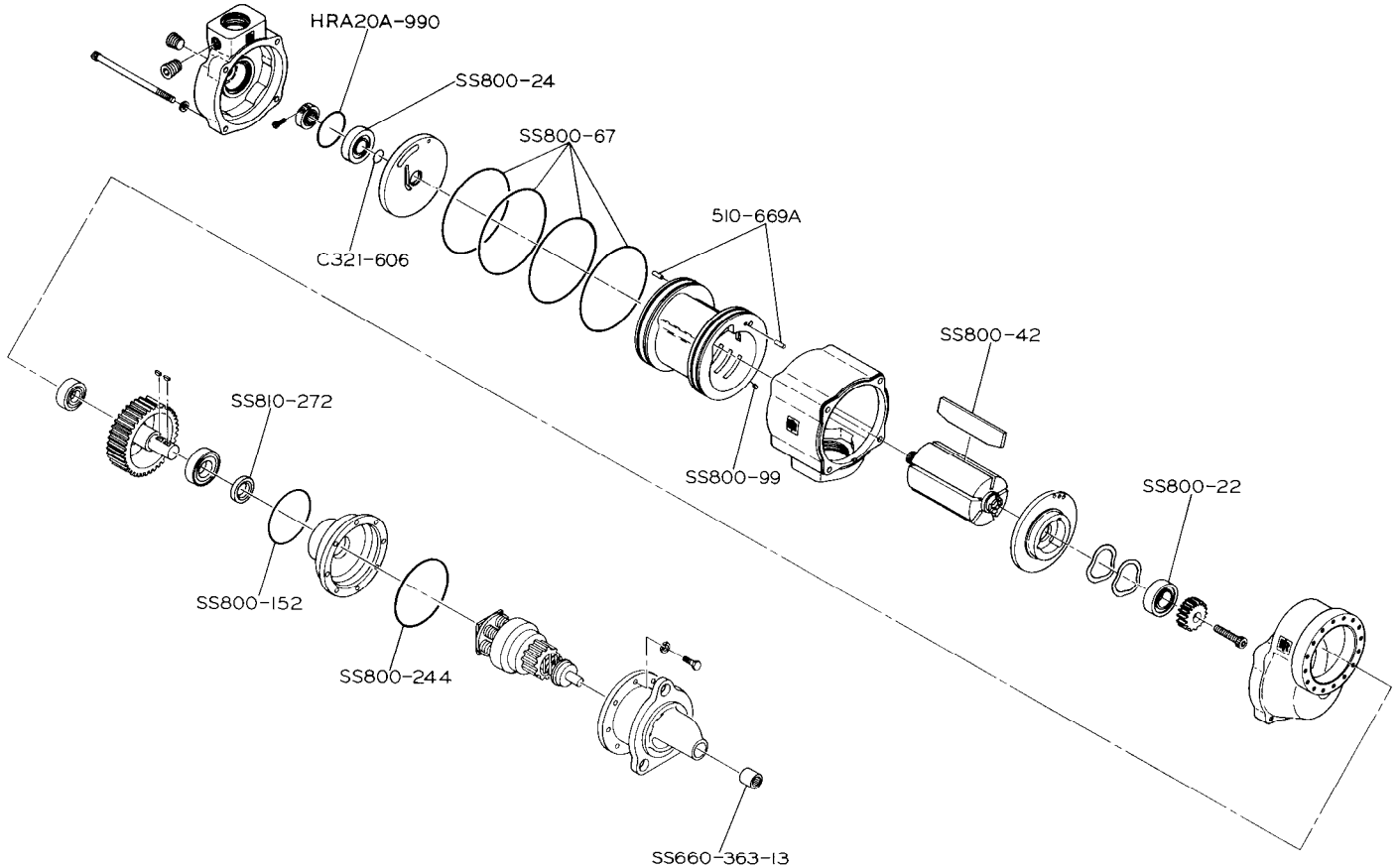


**Genuine**

# Ingersoll-Rand Replacement Parts

## SS810-TK2 TUNE-UP KIT



(Dwg. TPA1177)

This **GENUINE** Ingersoll-Rand Tune-up Kit contains the following parts:

PART NUMBER	PART NAME (Description)	QUANTITY
SS800-67	Cylinder O-ring	4
C321-606	Rotor Shaft O-ring	1
HRA20A-990	Rear Rotor Bearing O-ring	1
SS800-42	Vane	5
SS800-244	Drive Housing O-ring	1
SS810-272	Drive Gear Shaft Seal	1
SS800-152	Gear Case Cover Seal	1
510-669A	End Plate Alignment Pin	2
SS800-99	Cylinder Alignment Pin	1
SS800-24	Rear Rotor Bearing	1
SS800-22	Front Rotor Bearing	1
SS660-363-13	Drive Housing Bearing	1

For further information refer to the following form:

Starter Model	SS810
Installation and Maintenance Manual	P6701

**INGERSOLL-RAND®**  
**ENGINE STARTING SYSTEMS**

© Ingersoll-Rand Company 1991  
Printed in U.S.A.

Form K6701  
Edition 2  
03535648  
January, 1991