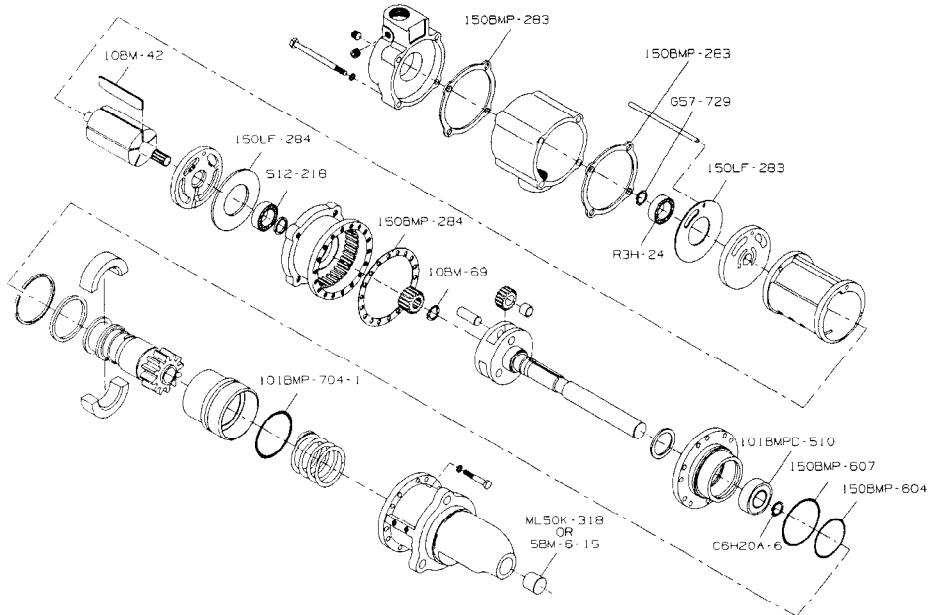


Genuine

Ingersoll-Rand Replacement Parts

150BMPD-TK1 TUNE-UP KIT



(Dwg. TPA789-4)

This **GENUINE** Ingersoll-Rand Tune-up Kit contains the following parts:

PART NUMBER	PART NAME (Description)	QUANTITY
G57-729	Rear Rotor Bearing Retainer (snap ring)	1
R3H-24	Rear Rotor Bearing (5/8" x 1-7/8" shielded bearing)	1
S12-218	Front Rotor Bearing (3/4" x 2-1/16" shielded bearing)	1
C6H20A-6	Front Rotor Bearing Retainer	1
150LF-283	Motor Housing Cover Gasket (perforated cork gasket)	1
10BM-42	Vane	5
150LF-284	Gear Case Gasket	1
10BM-69	Rotor Pinion Retainer ("C" ring)	1
101BMPD-510	Drive Shaft Front Bearing (3/4" x 1-7/8" open ball bearing)	1
150BMP-607	Gear Case Cover Seal (3-1/8" dia O-ring)	1
150BMP-604	Piston Seal (2-7/8" dia O-ring)	1
101BMP-704-1	Piston Ring (3-5/16" dia steel ring)	1
5BM-6-1S	Drive Housing Bushing (bronze bushing)	1
ML50K-318	Drive Housing Bearing (3/4" I. D. x 1" O. D. x 3/4" lg roller bearing)	1
*9BM-642	Bushing Oiler (felt strip)	1
150BMP-283	Gasket	2
150BMP-284	Gasket	1

*Not Illustrated.

For further information refer to the following form.

Starter Model	150BMP Model D
Parts Bulletin	P6033

INGERSOLL-RAND®
PROFESSIONAL TOOLS