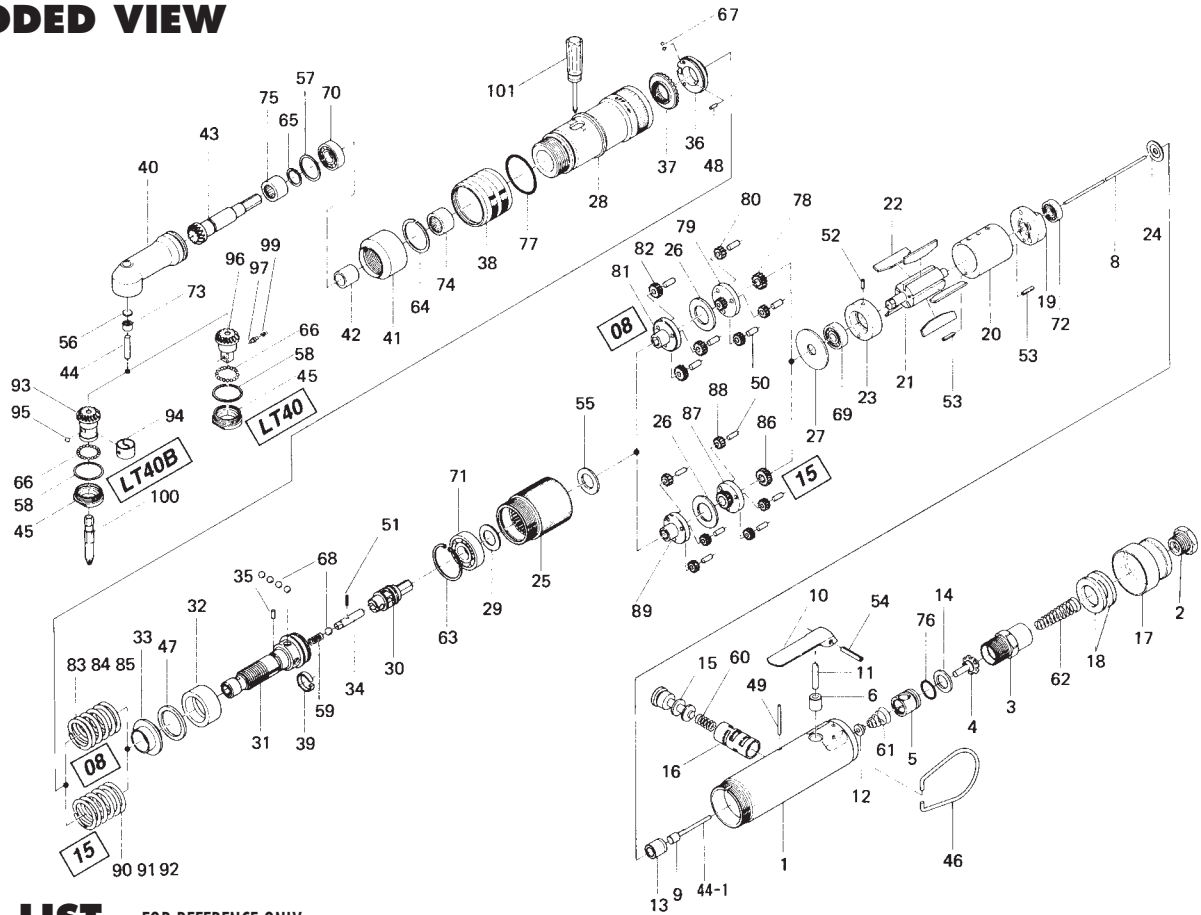


US-LT40(B)-08(15)C SCREWDRIVER

EXPLODED VIEW



PARTS LIST — FOR REFERENCE ONLY

Index Number	Part Number	Description	Qty.	Index Number	Part Number	Description	Qty.	Index Number	Part Number	Description	Qty.
1	461-025-6	Casing	1	38	472-370-7	Clutch Casing Sleeve	1	73	988-090-0	Needle Roller Bearing (B-24)	1
2	480-091-8	Air Inlet Bushing	1	39	471-670-7	Band	1	74	988-394-0	Needle Roller Bearing (FJ-1210)	1
3	461-097-6	Air Inlet Connector	1	40	469-441-7	Angle Casing	1	75	988-689-0	Needle Roller Bearing (RLM-1010)	1
4	259-100-0	Valve	1	41	469-081-6	Locking Nut	1	76	990-911-0	O-Ring (SNS-12)	1
5	461-102-6	Valve Bushing	1	42	469-807-5	Spacer	1	77	990-923-0	O-Ring (SNS-26)	1
6	553-103-1	Valve Rod Bushing	1	43	469-420-5	Driving Gear	1	78	472-460-7	Rotor Gear	1
8	463-104-7	Valve Rod	1	44	469-431-6	Driven Gear Spindle	1	79	472-480-7	First Gear Cage	1
9	444-106-8	Valve Rod Cap	1	44-1	970-108-0	Pin (H) (2 x 26.8 A)	1	80	472-470-7	First Planet Gear	3
10	700-107-1	Valve Lever	1	45	469-488-5	Angle Head Casing Cover	1	81	472-485-7	Second Gear Cage	1
11	461-114-6	Valve Pin	1	46	010-790-1	Suspension Ring	1	82	472-471-7	Second Planet Gear	3
12	259-254-0	Shut-off Valve	1	47	944-019-0	Back-up Ring (P19)	1	83	976-515-0	Spring (22.7 x 28) (2.6) (STANDARD)	1
13	461-567-6	Bushing	1	48	970-092-0	Pin (H) (2 x 5.5)	1	84	976-516-0	Spring (22.1 x 28) (2.3) (WEAK)	1
14	996-424-0	Packing (16 x 9 x 2)	1	49	970-105-0	Pin (H) (2 x 24)	1	85	976-517-0	Spring (21.5 x 31) (2.0) (WEAKER)	1
15	893-057-1	Reverse Valve (Lock 1)	1	50	972-089-0	Roller Pin (3 x 8)	6	86	472-460-5	Rotor Gear	1 X
16	472-211-7	Reverse Valve Bushing	1	51	969-470-0	Pin (2 x 8)	1	87	472-480-5	First Gear Cage	1 X
17	472-782-7	Exhaust Deflector	1	52	973-006-0	Roll Pin (2 x 6)	1	88	472-470-5	First Planet Gear	6 X
18	472-835-7	Filter	2	53	973-010-0	Roll Pin (2 x 10)	2	89	472-485-5	Second Gear Cage	1 X
19	472-285-7	Rear Plate	1	54	973-118-0	Roll Pin (3 x 18)	1	90	976-516-0	Spring (22.1 x 28) (2.3) (STANDARD)	1 X
20	472-286-7	Cylinder	1	55	975-106-0	Spacer (18.5 x 11 x 1)	1	91	976-515-0	Spring (22.7 x 28) (2.6) (STRONG)	1 X
21	472-287-7	Rotor	1	56	975-590-0	Round Plate (6.3 x 1)	1	92	976-517-0	Spring (21.5 x 31) (2.0) (WEAK)	1 X
22	472-288-0	Blade (PC)	5	57	975-768-0	Adjusting Spacer (19 x 16.2 x T)	1	93	469-430-5	Driven Gear	1
23	472-289-7	Front Plate	1	58	975-771-0	Adjusting Spacer (20 x 18 x T)	1	94	430-356-1	Bit Band	1
24	461-291-6	Rear Plate Spacer	1	59	976-058-0	Spring (4.5 x 11) (0.4)	1	95	981-002-0	Ball (1/8)	1
25	472-029-7	Gear Casing	1	60	976-147-0	Spring (7 x 12) (0.6)	1	96	469-430-8	Driven Gear (P)	1
26	496-483-1	Gear Casing Spacer	1	61	977-071-0	Cone Spring (5.5 x 11.5 x 15)	1	97	981-002-0	Ball (1/8)	1
27	472-807-7	Spacer	1	62	977-155-0	Cone Spring (7 x 10 x 35)	1	99	976-346-0	Spring (2.9 x 6.35) (0.45)	1
28	461-369-8	Clutch Casing	1	63	979-326-0	Inner Snap Ring (IRTW-26)	1				
29	461-344-6	Cam Retainer	1	64	979-190-0	Outer Snap Ring (22)	1				
30	472-346-5	Cam	1	65	979-351-0	Inner Snap Ring (ISTW-10)	1				
31	472-319-7	Anvil	1	66	981-000-0	Ball (1/16)	24				
32	472-375-7	Cam Ring	1	67	981-001-0	Ball (3/32)	2				
33	472-379-8	Retainer	1	68	981-004-0	Ball (3/16)	5				
34	471-318-5	Pilot Pin	1	69	982-063-0	Ball Bearing (606ZZ)	1				
35	471-764-7	Notch Pin	1	70	982-035-0	Ball Bearing (698)	1				
36	472-562-8	Spring Holder	1	71	982-100-0	Ball Bearing (6000)	1				
37	472-257-8	Regulating Screw	1	72	987-039-0	Miniature Ball Bearing (R1560ZZ)	1				

ACCESSORIES

100	916-510-0	(+) Double Bit (No.2 x 23) (6.35)	1
101	939-402-0	Manual Driver (No.2)	1

FOOTNOTES

- = Parts for US-LT40(B)-08C
- X = Parts for US-LT40(B)-15C
- = Parts for US-LT40B
- ▼ = Parts for US-LT40

AIMCO also offers a complete line of standard & special adapters, bits, sockets and extensions.



When ordering spare parts, please specify tool type, part number and description.
10000 SE PINE, PORTLAND, OR 97216
503-254-6600 FAX 503-255-2615