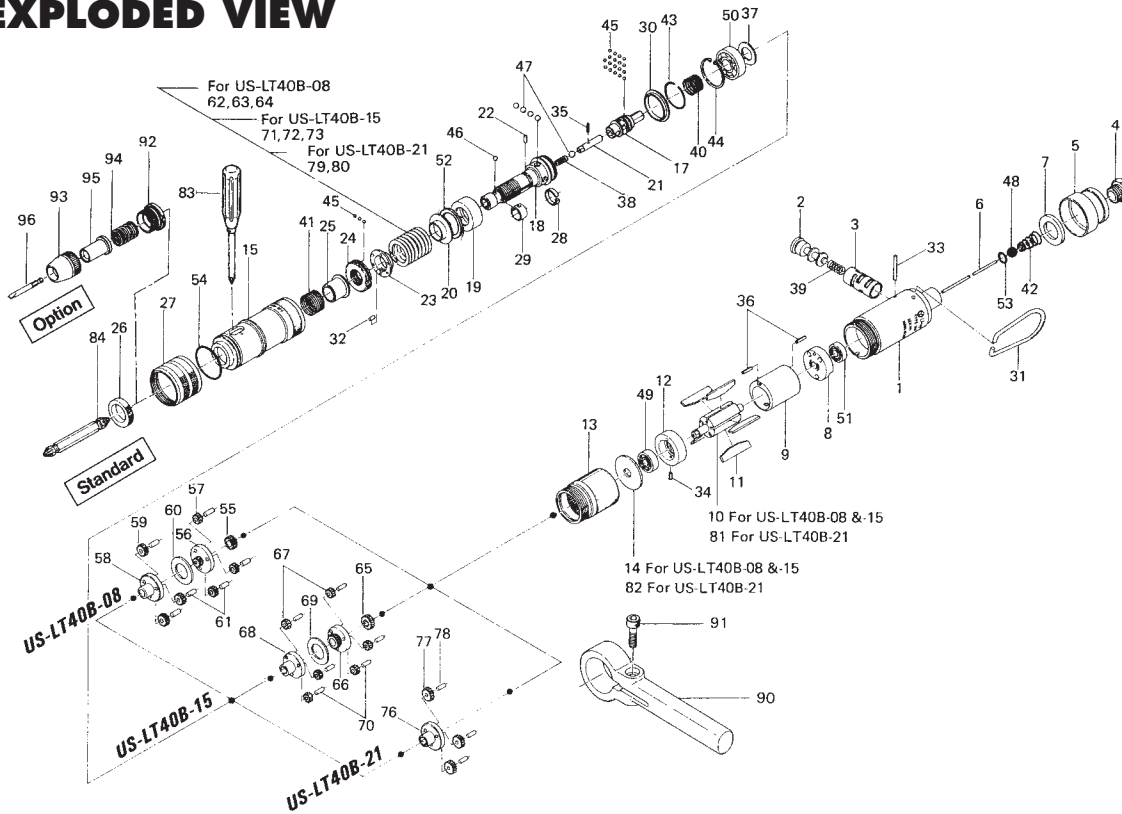


US-LT40B SERIES SCREWDRIVER

EXPLODED VIEW



PARTS LIST — FOR REFERENCE ONLY

Index Number	Part Number	Description	Qty.
1	472-025-7	Casing	1
2	893-057-1	Reverse Valve (Lock)	1
3	472-211-7	Reverse Valve Bushing	1
4	480-091-8	Air Inlet Bushing	1
5	472-782-7	Exhaust Deflector	1
6	472-104-7	Valve Rod	1
7	472-835-7	Filter	1
8	472-285-7	Rear Plate	1
9	472-286-7	Cylinder	1
11	472-288-0	Blade (PC)	5
12	472-289-7	Front Plate	1
13	472-029-7	Gear Casing	1
15	472-369-7	Clutch Casing	1
17	472-346-5	Cam	1
18	472-319-7	Anvil	1
19	472-375-7	Cam Ring	1
20	472-379-8	Retainer	1
21	471-318-5	Pilot Pin	1
22	471-764-7	Notch Pin	1
23	472-562-8	Spring Holder	1
24	472-257-8	Regulating Screw	1
25	472-351-7	Bit Sleeve	1
26	472-567-7	Bushing	1
27	472-370-7	Clutch Casing Sleeve	1
28	471-670-7	Band	1
29	471-356-7	Bit Band	1
30	463-334-7	Anvil Spacer	1
31	010-790-1	Suspension Ring	1
32	970-092-0	Pin (2 x 5.5)	1
33	970-105-0	Pin (2 x 24)	1
34	973-006-0	Roll Pin (2 x 6)	1
35	969-470-0	Pin (2 x 8)	1
36	973-010-0	Roll Pin (2 x 10)	2
37	975-106-0	Spacer (18.5 x 11 x 1)	1

Index Number	Part Number	Description	Qty.
38	976-058-0	Spring (4.5 x 11)	1
39	976-147-0	Spring (7 x 12)	1
40	976-332-0	Spring (13.5 x 10)	1
41	976-450-0	Spring (18.5 x 10)	1
42	977-157-0	Cone Spring (7 x 11 x 20)	1
43	978-218-0	Snap Ring (22 x 1)	1
44	979-326-0	Inner Snap Ring (IRTW-26)	1
45	981-001-0	Ball (3/32)	21
46	981-002-0	Ball (1/8)	1
47	981-004-0	Ball (3/16)	5
48	981-208-0	Ball (5/16) (Black)	1
49	982-063-0	Ball Bearing (606ZZ)	1
50	982-100-0	Ball Bearing (6000)	1
51	987-039-0	Miniature Ball Bearing (R-1560ZZ)	1
52	944-019-0	Back-up Ring (P-19)	1
53	990-005-0	O-Ring (P-7)	1
54	990-923-0	O-Ring (SNS-26)	1
55	472-460-7	Rotor Gear	1
56	472-480-7	First Gear Cage	1
57	472-470-7	First Planet Gear	3
58	472-485-7	Second Gear Case	1
59	472-471-7	Second Planet Gear	3
60	496-483-1	Gear Case Spacer	1
61	972-089-0	Needle Roller (3 x 8)	6
62	976-515-0	Spring (22.7 x 28) (Standard)	1
63	976-516-0	Spring (22.1 x 28) Red (Option: Weaker)	1
64	976-517-0	Spring (21.5 x 31) Yellow (Option: Weakest)	1
10	472-287-7	Rotor	1
14	472-807-7	Spacer	1
65	472-460-5	Rotor Gear	1
66	472-480-5	First Gear Cage	1
67	472-470-5	Planet Gear	6
68	472-485-5	Second Gear Case	1
69	496-483-1	Gear Case Spacer	1

Index Number	Part Number	Description	Qty.
70	972-089-0	Needle Roller (3 x 8)	6
71	976-516-0	Spring (22.1 x 28) (Standard)	1
72	976-515-0	Spring (22.7 x 28) (Option: Strong)	1
73	976-517-0	Spring (21.5 x 31) Yellow (Option: Weak)	1
10	472-287-7	Rotor	1
14	472-807-7	Spacer	1
76	472-480-3	Gear Case	1
77	472-470-3	Planet Gear	3
78	972-089-0	Needle Boiler (3 x 8)	3
79	976-517-0	Spring (21.5 x 31) (Standard)	1
80	975-516-0	Spring (22.1 x 28) Red (Option: Strong)	1
81	472-287-3	Rotor	1
82	472-807-3	Spacer	1

ACCESSORIES

83	939-402-0	Manual Driver (No.2)	1
84	916-810-0	(+) Double Bit (No.2 x 75)	1

OPTIONAL ACCESSORIES

90	472-516-7	Reaction Bar	1
91	945-222-0	Hexagon Bolt (M6 x 22)	1
87	496-088-1	Silencer Assembly	1
88	934-150-0	Leader Hose Assembly	1
89	496-885-1	Exhaust Hose Assembly	1
92	472-082-7	Bit Casing Set Screw	1
93	471-057-7	Bit Casing	1
94	976-330-0	Spring (13.8 x 18)	1
95	917-350-0	Finder (7.3 x 56 x 24)	1
96	916-030-0	(-) Bit (5 x 56)	1

AIMCO also offers a complete line of standard & special adapters, bits, sockets and extensions.

FOOTNOTES

- = Parts for US-LT40B-08
- ✕ = Parts for US-LT40B-15
- = Direct Type Silencer
- ☆ = For slotted Head Bit and Finder. Take out 472-567-7 Bushing, FIRS.
- = Parts for US-LT40B-21
- = Piped-away Type Silencer



When ordering spare parts, please specify tool type, part number and description.
10000 SE PINE, PORTLAND, OR 97216
503-254-6600 FAX 503-255-2615