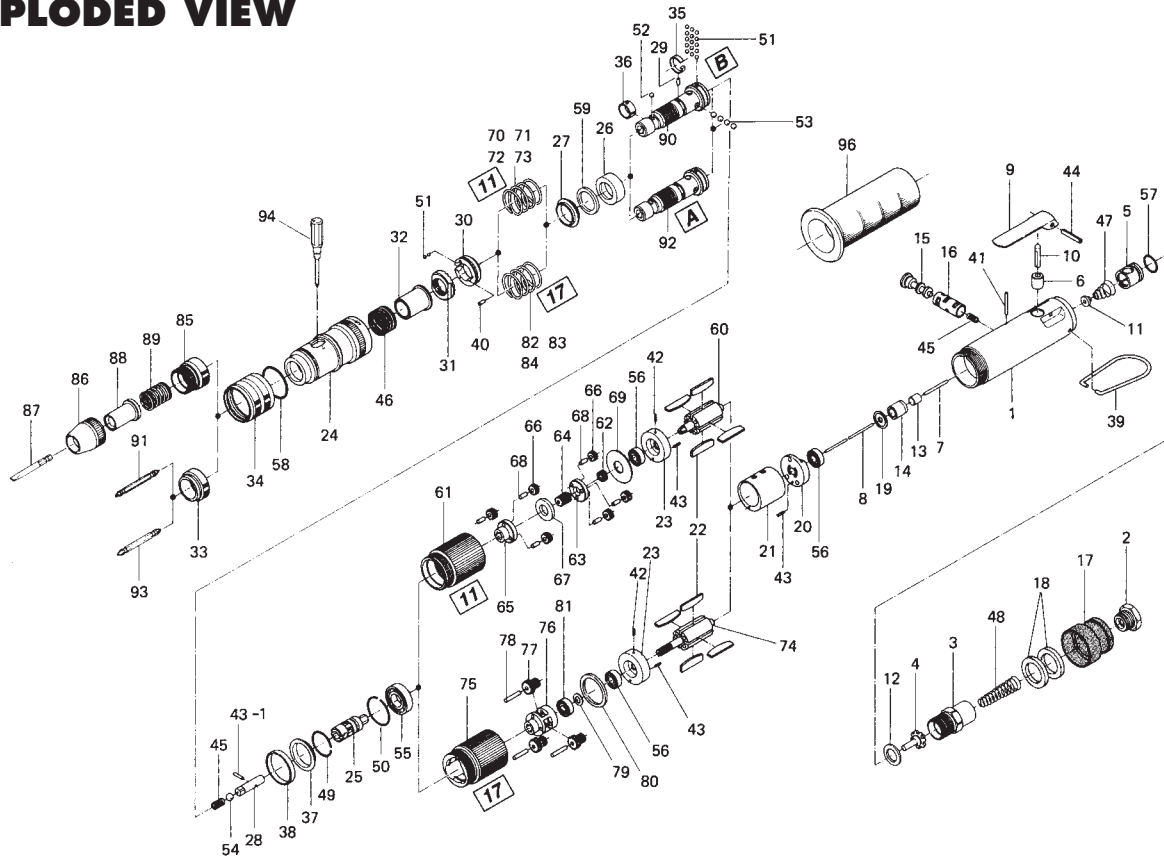


# US-LT30A[B]L-1 1 [17] SCREWDRIVER

## EXPLODED VIEW



## PARTS LIST — FOR REFERENCE ONLY

Index Number	Part Number	Description	Qty.	Index Number	Part Number	Description	Qty.	Index Number	Part Number	Description	Qty.
1	469-025-5	Casing	1	36	471-356-7	Bit Band	1	70	976-472-0	Spring (20.6 x 22) (2.1) (Standard)	1
2	480-091-8	Air Inlet Bushing	1	37	462-334-7	Anvil Spacer	1	71	976-471-0	Spring (19.4 x 22) (1.6) (Weaker)	1
3	461-097-6	Air Inlet Connector	1	38	462-397-7	Gear Casing Flange	1	72	976-493-0	Spring (20.8 x 22) (2.0) (Weak)	1
4	259-100-0	Valve	1	39	401-790-1	Suspension Ring	1	73	976-504-0	Spring (21 x 22) (2.3) (Strong)	1
5	461-102-6	Valve Bushing	1	40	970-091-0	Pin (H) (2 x 45)	1	74	471-287-5	Rotor	1
6	553-103-1	Valve Rod Bushing	1	41	972-020-0	Roller Pin (2 x 19.8) (A)	1	75	471-029-5	Gear Casing	1
7	970-105-0	Pin (H) (2 x 24)	1	42	973-001-0	Roll Pin (1.5 x 6)	1	76	471-480-5	Gear Cage	1
8	462-104-7	Valve Hod	1	43	973-003-0	Roll Pin (1.5 x 8)	2	77	471-470-5	Planet Gear	3
9	466-107-5	Valve Lever	1	43-1	969-470-0	Pin (2 x 8)	1	78	972-036-0	Roller Pin (2.5 x 15.8) (A)	3
10	469-114-5	Valve Pin	1	44	973-118-0	Roll Pin (3 x 18)	1	79	975-009-0	Spacer (9 x 5.2 x 0.3)	1
11	259-254-0	Shut-Off Valve	1	45	976-058-0	Spring (4.5 x 11) (0.4)	2	80	975-188-0	Spacer (26 x 20 x 1.5)	1
12	996-424-0	Packing	1	46	976-450-0	Spring (18.5 x 10) (1.0)	1	81	987-013-0	Miniature Ball Bearing (R-1350)	1
13	444-1068	Valve Rod Cap	1	47	977-071-0	Cone Spring (5.5 x 11.5 x 15)	1	82	976-493-0	Spring (20.8 x 22) (2.0)	1
14	461-567-6	Bushing	1	48	977-155-0	Cone Spring (7 x 10 x 35)	1	83	976-471-0	Spring (19.4 x 22) (1.6) (Weak)	1
15	893-056-1	Reverse Valve	1	49	978-185-0	Snap Ring (19 x 1)	1	84	976-472-0	Spring (20.6 x 22) (2.1) (Strong)	1
16	471-211-7	Reverse Valve Bushing	1	50	978-229-0	Snap Ring (23 x 1)	1	56	987-041-0	Miniature Ball Bearing (R-1350ZZ)	2
17	408-782-1	Exhaust Deflector	1	51	981-001-0	Ball (3/32)	17	85	471-082-7	Bit Casing Set Screw	1
18	471-835-5	Filter (F100)	2	52	981-002-0	Ball (1/8)	1	86	471-057-7	Bit Casing	1
19	469-291-5	Rear Plate Spacer	1	53	981-003-0	Ball (5/32)	4	87	916-030-0	(-) Bit (5 x 56) (6.35H)	1
20	471-285-7	Rear Plate	1	54	981-004-0	Ball (3/16)	1	88	917-350-0	Finder (7.3 x 56 x 24-4E)	1
21	471-286-7	Cylinder	1	55	982-901-0	Ball Bearing (6900)	1	89	976-330-0	Spring (13.8 x 18) (0.8)	1
22	471-288-0	Blade (PC)	4	56	987-041-0	Miniature Ball Bearing (R-1350ZZ)	2	90	471-319-2	Anvil	1
23	471-289-7	Front Plate	1	57	990-911-0	O-Ring (SNS-12)	1	91	916-810-0	(+) Double Bit (No. 2 x 75) (6.35)	1
24	462-369-7	Clutch Casing	1	58	990-919-0	O-Ring (SNS-22)	1	92	471-319-5	Anvil	1
25	471-346-5	Cam	1	59	944-016-0	Back-up Ring (P16)	1	93	916-710-0	(+) Double Bit (No. 2 x 70) (5H)	1
26	471-375-8	Cam Ring	1	60	471-287-7	Rotor	1				
27	471-164-8	Cam Retainer	1	61	471-029-7	Gear Casing	1				
28	471-318-5	Pilot Pin	1	62	471-460-7	Rotor Gear	1				
29	471-764-7	Notch Pin	1	63	471-480-7	First Gear Cage	1				
30	471-562-7	Retainer	1	54	471-445-7	Middle Gear	1				
31	471-257-7	Regulating Screw	1	55	471-485-7	Second Gear Cage	1				
32	471-351-6	Bit Sleeve	1	56	471-471-7	Second Planet Gear	6				
33	471-567-6	Bushing	1	67	471-483-7	Gear Cage Spacer	1				
34	471-370-7	Clutch Casing Sleeve	1	68	972-033-0	Roller Pin (2.5 x 8)	6				
35	471-670-7	Band	1	69	975-178-0	Spacer	1				

### ACCESSORIES

94	939-402-0	Manual Driver (No.2)	1
96	471-083-7	Casing Protector (F-Type)	1

### FOOTNOTES

- = Parts for US-LT30-11
- ▲ = Parts for US-LT30-17
- ✕ = Parts for finder
- = Parts for US-LT30BL
- = Parts for US-LT30AL

AIMCO also offers a complete line of standard & special adapters, bits, sockets and extensions.



# AIMCO

When ordering spare parts, please specify tool type, part number and description.

10000 SE PINE, PORTLAND, OR 97216  
503-254-6600 FAX 503-255-2615