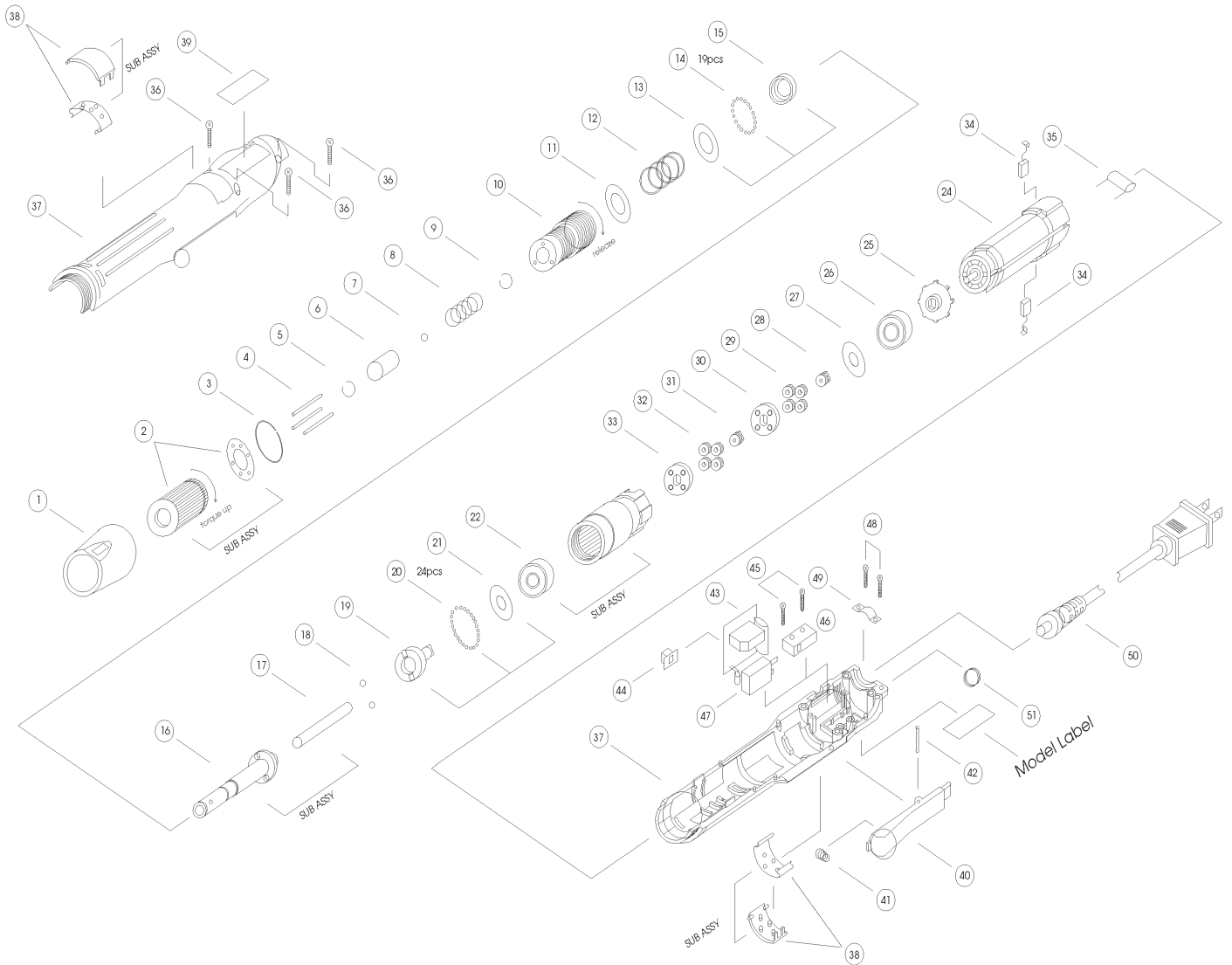


# AE-2015 ELECTRIC SCREWDRIVER

## EXPLODED VIEW



## PARTS LIST — FOR REFERENCE ONLY

Index Number	Part Number	Description	Qty.	Index Number	Part Number	Description	Qty.	Index Number	Part Number	Description	Qty.
1	6H1041	RETAINING RING		24	2M5031	MOTOR		45	8T2047	SCREW	
2	4A4010	REGULATING HANDLE SUB ASSEMBLY		25	6R2021	FAN		46	2S3012	MICRO SWITCH	
3	4U1056	SNAP RING		26	4E1018	BALL BEARING		47	2F3011	PROTECTOR	
4	4N1025	PUSH PIN		27	4W3012	WASHER		48	8T2666	SCREW	
5	4U1051	SNAP RING		28	4G1611	DRIVING GEAR		49	6R6013	CABLE CLIP	
6	4H2043	BIT SLIDE SLEEVE		29	4G2811	FIRST PLANET GEAR		50	2W1027	POWER CORD	
7	4B2015	BALL		30	4L1812	FIRST GEAR CAGE		51	4F1023	HANGER RING	
8	4S3064	SLEEVE SPRING		31	4G3061	GEAR		52	7L1331-0	MODEL LABEL	
9	4U1051	SNAP RING		32	4G2036	SECOND PLANET GEAR		53	8T1527	SCREW	
10	4T1081	HAMMER CASING		33	4L1812	SECOND GEAR CAGE					
11	4W3212	PUSH WASHER		34	2B1014	BRUSH					
12	4S1042	SPRING		35	2C6712	CONDENSER					
13	4W3212	PUSH WASHER		36	8T2690	TAPPING SCREW					
14	4B1024	BALL		37	6Z1072	PLASTIC HOUSING (L+R)					
15	4E2016	BALL BEARING		38	6A2011	CARBON MAINTANCE BONNET SUB ASSEMBLY					
16	4A2018	ANVIL SUB ASSEMBLY		39	7L3015	CAUTION LABEL					
18	4B1029	BALL		40	6P3013	TRIGGER					
19	4K1062	HAMMER		41	4S3051	SPRING					
20	4B1024	BALL		42	4N1017	PIN					
21	4W3213	WASHER		43	2A6016	PWB SUB ASSEMBLY					
22	4A7019	GEAR HOUSING SUB ASSEMBLY		44	6V1033	PUSH BUTTON					



**AIMCO**

When ordering spare parts, please specify tool type, part number and description.

10000 SE PINE, PORTLAND, OR 97216  
503-254-6600 FAX 503-255-2615

### FOOTNOTES