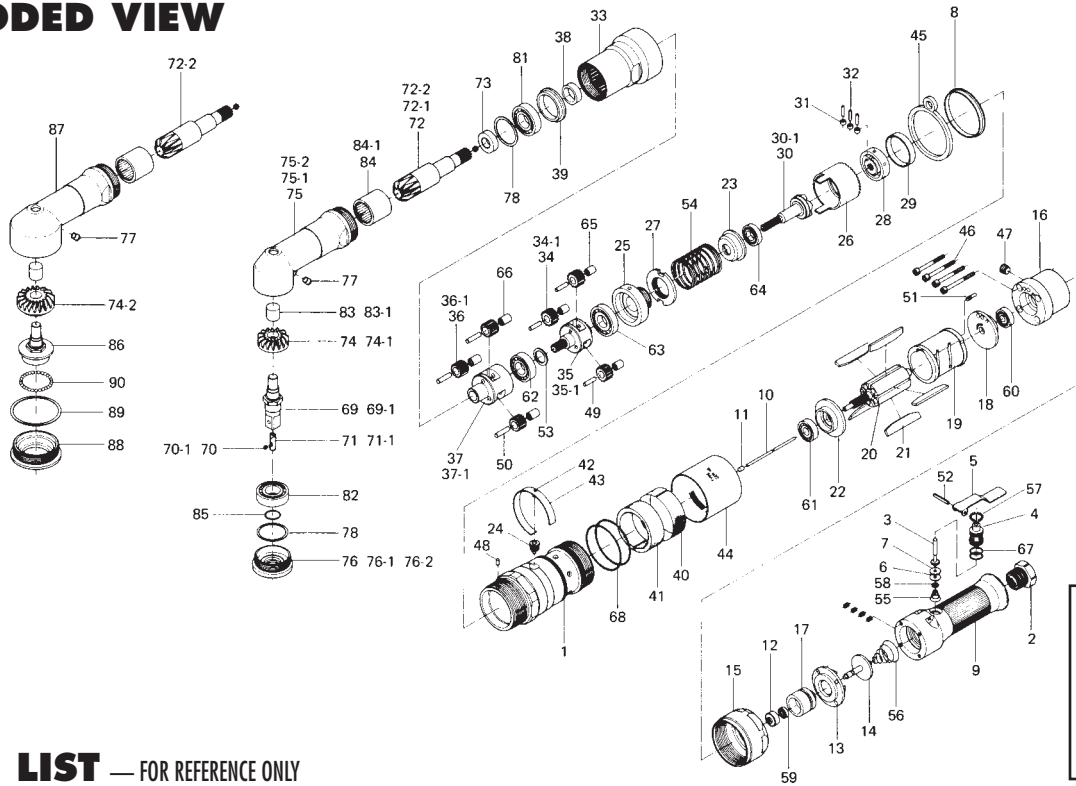


UAN-830 SERIES ANGLE NUTRUNNERS

[MECHANICAL CLUTCH CUT TYPE]

EXPLODED VIEW



Guide of Composition	
UAN-820-36C	A + B + F
UAN-830-28C	A + C + F
UAN-830-18C	A + C + G
UAN-840-24C	A + D + F
UAN-840-15C	A + D + G
UAN-840F-24C	A + E + F
UAN-840F-15C	A + E + G

PARTS LIST — FOR REFERENCE ONLY

Index Number	Part Number	Description	Qty.
[A] common parts			
1	263-025-6	Handle	1
2	592-091-2	Air Inlet Bushing	1
3	265-100-0	Valve	1
4	265-101-0	Valve Bushing	1
5	551-107-0	Valve Lever	1
6	548-120-3	Valve Packing Spacer	1
7	548-872-3	Valve Packing	1
8	263-282-6	Handle Bushing	1
9	263-014-6	Valve Body	1
10	263-104-6	Valve Rod	1
11	263-103-6	Valve Rod Bushing	1
12	265-106-0	Valve Rod Cap	1
13	263-253-6	Shut-off Valve Bushing	1
14	263-254-6	Shut-off Valve	1
15	263-736-6	Valve Body Nut	1
16	263-012-6	Head Cover	1
17	265-309-0	Head Cover Bushing	1
18	263-285-6	Rear Plate	1
19	263-286-2	Cylinder	1
20	263-287-6	Rotor	1
21	263-288-2	Blade	5
22	263-289-2	Front Plate	1
23	263-164-6	Spring Setter	1
24	265-242-0	Torque Adjuster	1
25	263-256-6	Adjusting Shaft	1
26	263-258-6	Adjusting Ring	1
27	263-269-6	Adjusting Shaft Nut	1
28	263-344-6	Cam Setter	1
29	263-345-6	Cam Setter Bushing	1
31	265-651-1	Cam Roller	3
32	263-652-6	Cam Roller Pin	3
33	263-029-6	Gear Casing	1
38	263-489-2	Second Gear Cage Spacer	1
39	263-490-2	Gear Cage Bearing Collar	1
40	263-042-6	Silencer	1
41	263-099-6	Exhaust Stack	1
42	265-562-1	Stopper	1
43	263-564-6	Stopper Cover	1
44	263-782-6	Exhaust Cover	1
45	263-790-6	Suspension Ring	1
46	945-045-0	Allen Head Bolt (M4 x 45)	4
47	966-100-0	Allen Head Plug (1/8)	1
48	970-204-0	Pin (H) (3 x 6)	1
49	972-117-0	Roller Pin (4 x 17)	3
50	972-164-0	Roller Pin (5 x 20)	3
51	969-454-0	Pin (3 x 16)	1

Index Number	Part Number	Description	Qty.
52	973-124-0	Roll Pin (3 x 24)	1
53	975-123-0	Spacer (20 x 15 x 2)	1
54	976-726-0	Spring (36 x 41)	1
55	977-069-0	Cone Spring (5 x 12.5 x 10)	1
56	977-177-0	Cone Spring (7.8 x 26 x 25)	1
57	979-315-0	Inner Snap Ring (IRTW-15)	1
58	979-405-0	Outer Snap Ring (E2.5)	1
59	987-026-0	Miniature Ball Bearing (R1 240F)	1
60	982-015-0	Ball Bearing (608)	1
61	982-016-0	Ball Bearing (609)	1
62	982-102-0	Ball Bearing (6002)	1
63	982-404-0	Ball Bearing (EE5)	1
64	982-902-0	Ball Bearing (6901)	1
65	988-450-0	Needle Roller Bearing (HK0408)	3
66	988-451-0	Needle Roller Bearing (HK0509)	3
67	990-909-0	O-Ring (SNS11.2)	2
68	990-937-0	O-Ring (SNS46)	2
[B] Angle Head Section for UAN-820-36C			
69	262-319-1	Anvil (3/8)	1
70	891-105-1	Socket Retainer Pin	1
71	891-106-1	Socket Retainer Pin Rubber	1
72	262-420-1	Driving Gear	1
73	263-421-2	Driving Gear Bushing	1
74	262-430-2	Driven Gear	1
75	262-441-1	Angle Head Casing	1
76	262-488-1	Angle Head Casing Cover	1
77	968-130-0	Grease Cup (3/16)	1
78	975-834-0	Adjusting Spacer (35 x 30 x T)	1
79	975-807-0	Adjusting Spacer (28 x 25 x T)	1
80	979-250-0	Outer Snap Ring (GV-12)	1
81	982-103-0	Ball Bearing (6003)	1
82	982-949-0	Ball Bearing (16001)	1
83	988-480-0	Needle Roller Bearing (BK810)	1
84	988-496-0	Needle Roller Bearing (HMK1725)	1
85	990-914-0	O-Ring (SNS16)	1
[C] Angle Head Section for UAN-830-18C, 28C			
69-1	264-319-2	Anvil (1/2)	1
70-1	891-110-1	Socket Retainer Pin	1
71-1	891-111-1	Socket Retainer Pin Rubber	1
72-1	263-420-2	Driving Gear	1
73	263-421-2	Driving Gear Bushing	1
74-1	263-430-3	Driven Gear	1
75-1	263-441-2	Angle Head Casing	1
76-1	263-488-3	Angle Head Casing Cover	1
77	968-130-0	Grease Cup (3/16)	1

Index Number	Part Number	Description	Qty.
78	975-834-0	Adjusting Spacer (35 x 30 x T)	2
81	982-103-0	Ball Bearing (6003)	2
83-1	988-345-0	Needle Roller Bearing (BK1015)	1
84-1	988-494-0	Needle Roller Bearing (HMK2428)	1
85	990-914-0	O-Ring (SNS16)	1
[D] Angle Head Section for UAN-840-15C, 24C			
69-1	264-319-2	Anvil (1/2)	1
70-1	891-110-1	Socket Retainer Pin	1
71-1	891-111-1	Socket Retainer Pin Rubber	1
72-2	264-420-1	Driving Gear	1
73	263-421-2	Driving Gear Bushing	1
74-2	264-430-2	Driven Gear	1
75-2	264-441-1	Angle Head Casing	1
76-2	264-488-2	Angle Head Casing Cover	1
77	968-130-0	Grease Cup (3/16)	1
78	975-834-0	Adjusting Spacer (35 x 30 x T)	2
81	982-103-0	Ball Bearing (6003)	2
83-1	988-345-0	Needle Roller Bearing (BK1015)	1
84-1	988-494-0	Needle Roller Bearing (HMK2428)	1
85	990-914-0	O-Ring (SNS16)	1
[E] Angle Head Section for UAN-840F-15C, 24C			
86	265-319-6	Socket Anvil (17)	1
72-2	264-420-1	Driving Gear	1
73	263-421-2	Driving Gear Bushing	1
74-2	264-430-2	Driven Gear	1
87	264-441-6	Angle Head Casing	1
88	265-488-6	Angle Head Casing Cover	1
77	968-130-0	Grease Cup (3/16)	1
89	975-895-0	Adjusting Spacer (56 x 50 x T)	1
90	981-003-0	Ball (5/32)	28
83-1	988-345-0	Needle Roller Bearing (BK1015)	1
[F] Parts for UAN-820C-36C, 830-28C, 840F-24C			
30	263-374-5	Cam Shaft	1
34	263-470-5	First Planet Gear	3
35	263-480-5	First Gear Cage	1
36	263-471-5	Second Planet Gear	3
37	263-485-5	Second Gear Cage	1
[G] Parts for UAN-830C-18C, 840F-15C			
30-1	263-374-6	Cam Shaft	1
34-1	263-470-6	First Planet Gear	3
35-1	263-480-6	First Gear Cage	1
36-1	263-471-6	Second Planet Gear	3
37-1	263-485-6	Second Gear Cage	1

FOOTNOTES

AIMCO also offers a complete line of standard & special adapters, bits, sockets and extensions.



AIMCO

When ordering spare parts, please specify tool type, part number and description.

10000 SE PINE, PORTLAND, OR 97216
503-254-6600 FAX 503-255-2615