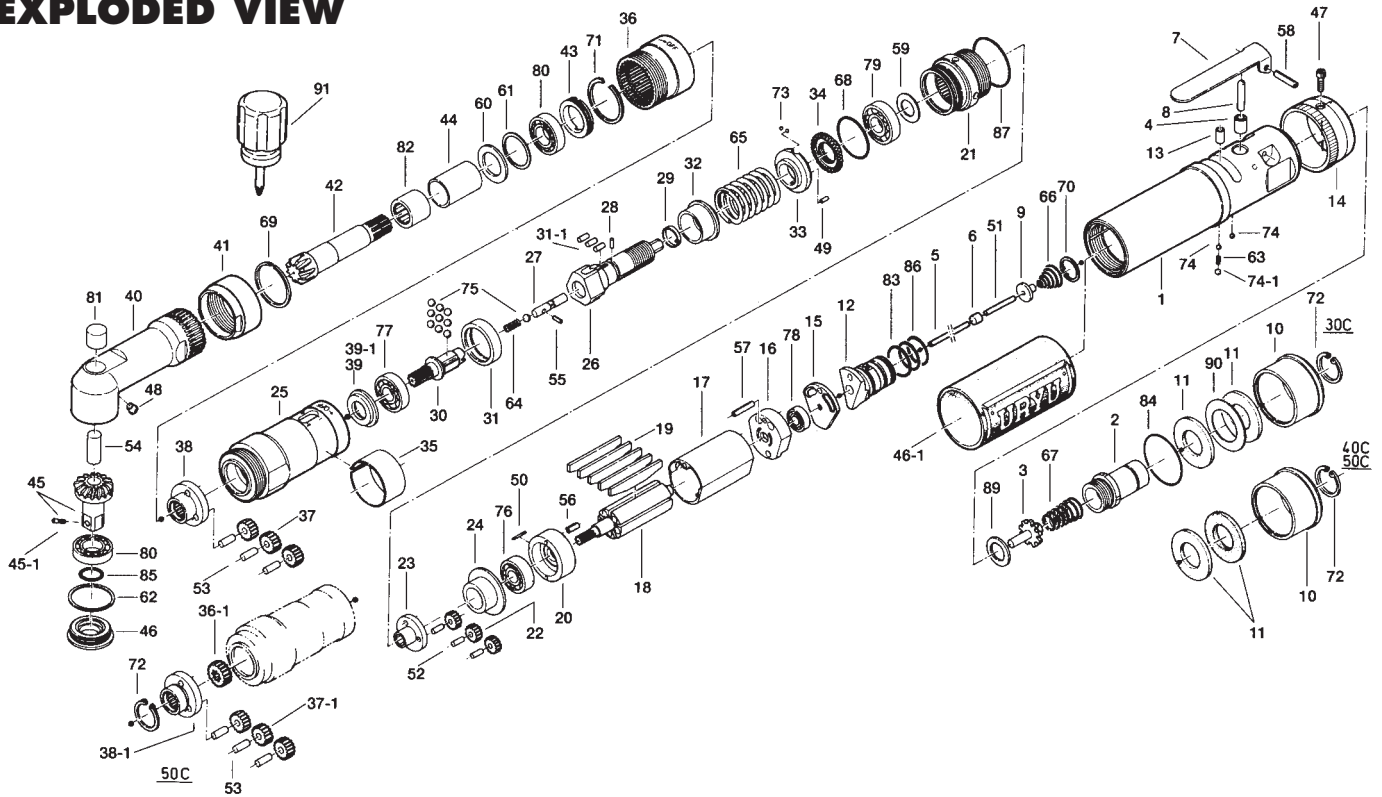


UAN-611R-30C, 40C & 50C TORQUE CONTROL ANGLE NUTRUNNERS

EXPLODED VIEW



PARTS LIST — FOR REFERENCE ONLY

Index Number	Part Number	Description	Qty.	Index Number	Part Number	Description	Qty.	Index Number	Part Number	Description	Qty.
1	268-025-7	Casing	1	42	259-420-2	Driving Gear	1	78	982-033-0	Ball Bearing (696)	1
2	259-091-6	Air Inlet Bushing	1	43	259-426-0	Driving Gear Spindle	1	79	982-100-0	Ball Bearing (6000)	1
3	259-100-6	Valve	1	44	259-567-2	Bushing	1	80	982-902-0	Ball Bearing (6901)	2
4	553-103-1	Valve Rod Bushing	1	45	895-046-1	Driven Gear Assembly (P)	1	81	988-480-0	Needle Roller Bearing (BK0810)	1
5	268-104-6	Valve Rod	1	45-1	891-300-1	Socket Retainer Pin Assembly	1	82	988-393-0	Needle Roller Bearing (NF-1416)	1
6	444-106-8	Valve Rod Cap	1	46	268-488-6	Angle Casing Cover	1	83	990-590-0	O-Ring (17 X 1)	2
7	196-107-7	Valve Lever	1	46-1	268-840-6	Handle Protector	1	84	990-603-0	O-Ring (28.5 X 1.3)	1
8	259-114-0	Valve Spindle	1	47	945-001-0	Allen Head Bolt (M3 X 10)	1	85	990-910-0	O-Ring (SNS-12.5)	1
9	259-254-6	Shut-Off Valve	1	48	968-130-0	Grease Cup (3/16)	1	86	990-914-0	O-Ring (SNS-16)	1
10	259-780-6	Exhaust Stack	1	49	970-092-0	Pin (H) (2 x 55)	1	87	990-924-0	O-Ring (SNS-30)	1
11	259-835-6	Filter	2	50	971-110-0	Pin (2 X 10)	1	89	996-433-0	Urethane Packing (19 X 12 X 1)	1
12	268-210-7	Reverse Valve	1	51	972-020-0	Roller Pin (2 x 19.8A)	1	30	268-346-6	Cam	1 ■
13	268-211-6	Reverse Valve Bushing	1	52	972-089-0	Roller Pin (3X8)	3	37	499-470-7	Second Planet Gear	3 ■
14	268-212-6	Reverse Lever	1	53	972-111-0	Roller Pin (4 X 11)	3	38	259-485-0	Second Gear Cage	1 ■
15	268-291-7	Rear Plate Spacer	1	54	972-320-0	Roller Pin (8 X 20)	1	39	268-487-6	Second Gear Cage Spacer	1 ■
16	259-285-0	Rear Plate	1	55	969-470-0	Pin (E) (2 X 8)	1	77	982-016-0	Ball Bearing (609)	1 ■
17	259-286-0	Cylinder	1	56	973-108-0	Roll Pin (3 X 8)	1	90	996-459-0	Urethane Packing (32 X 22 X 0.5)	1 ■
18	259-287-0	Rotor	1	57	973-116-0	Roll Pin (3 X 16)	1	30	268-346-7	Cam	1 ●
19	268-288-6	Blade (PC)	5	58	973-124-0	Roll Pin (3 X 24)	1	37	444-471-1	Second Planet Gear	3 ●
20	496-289-1	Front Plate	1	59	975-106-0	Spacer (18.5 X 11 X 1)	1	38	268-485-7	Second Gear Cage	1 ●
21	463-029-8	Gear Casing	1	60	975-166-0	Spacer (24 X 16 X 1.5)	1	39-1	268-487-7	Second Gear Cage Spacer	1 ●
22	472-470-3	Planet Gear	3	61	975-806-0	Adjusting Spacer (24 X 20 X T)	1	77	982-902-0	Ball Bearing (6901)	1 ●
23	472-480-3	Gear Cage	1	62	975-807-0	Adjusting Spacer (28 X 25 X T)	1	30	268-346-6	Cam	1 ● X
24	472-807-3	Spacer	1	63	976-022-0	Spring (3 X 5.5 X 0.4)	1	36-1	499-445-0	Middle Gear	1 X
25	268-369-6	Clutch Casing	1	64	976-058-0	Spring (4.5X1 1 X0.4)	1	37-1	499-470-0	Second Planet Gear	3 X
26	268-654-6	Cam Guide	1	65	976-596-0	Aspring (25.2X32.5X3.0)	1	38-1	259-485-1	Second Gear Cage	1 X
27	268-318-6	Pilot Pin	1	66	977-072-0	Cone Spring (5.5 X 15 X 14)	1	39	268-487-6	Second Gear Cage Sspacer	1 X
28	471-764-7	Notch Pin	1	67	977-275-0	Cone Spring (11 X14 X 32)	1	72	979-358-0	Inner Snap Ring (ISTW-17)	1 X
29	471-670-7	Band	1	68	978-278-0	Snap Ring (28 X 1)	1	77	982-016-0	Ball Bearing (609)	1 X
31	259-375-0	Cam Ring	1	69	978-308-0	Snap Ring (30 X 1.6)	1				
31-1	268-651-6	Cam Roller	3	70	979-009-0	Inner Snap Ring (16)	1				
32	268-164-7	Spring Setter	1	71	979-206-0	Inner Snap Ring (28)	1				
33	895-064-1	Stopper	1	72	979-358-0	Inner Snap Ring (ISTW-17)	1				
34	472-257-8	Regulator Screw	1	73	981-001-0	Ball (3/32)	2				
35	259-670-0	Band	1	74	981-002-0	Ball (1/8)	2				
36	259-466-0	Internal Gear	1	74-1	981-003-0	Ball (5/32)	1				
40	268-441-6	Angle Casing	1	75	981-004-0	Ball (3/16)	10				
41	259-081-0	Locking Nut	1	76	982-015-0	Ball Bearing (608)	1				

ACCESSORIES

91	939-402-0	Manual Driver No.2	1
----	-----------	--------------------	---

FOOTNOTES

- = Parts for UAN-611R-30C
- = Parts for UAN-611R-40C
- X = Parts for UAN-611R-50C

AIMCO also offers a complete line of standard & special adapters, bits, sockets and extensions.



When ordering spare parts, please specify tool type, part number and description.
10000 SE PINE, PORTLAND, OR 97216
503-254-6600 FAX 503-255-2615