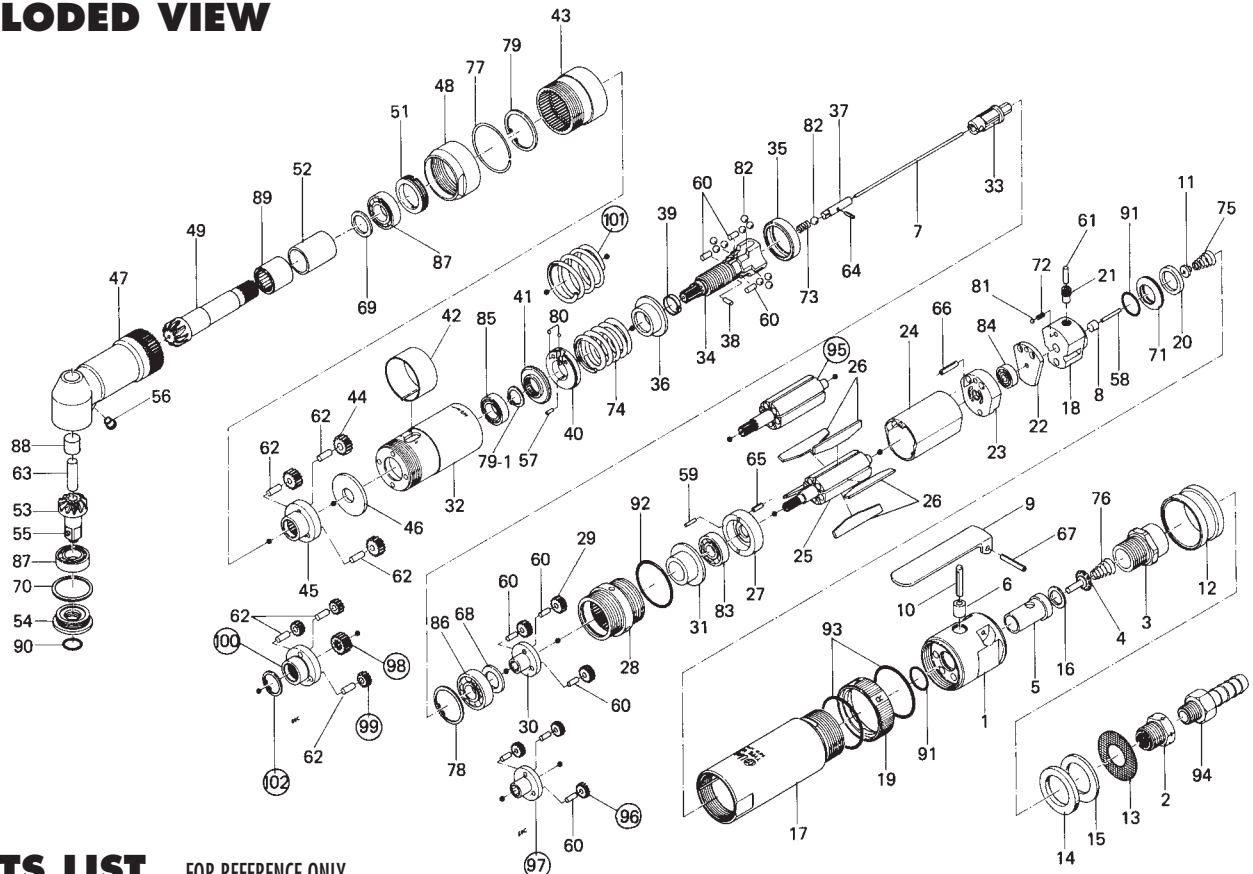


# UAN-610R-30CS, 40CS, 50CS & 60CS, ANGLE NUTRUNNER [REVERSIBLE CLUTCH CUT TYPE]

## EXPLODED VIEW



## PARTS LIST — FOR REFERENCE ONLY

Index Number	Part Number	Description	Qty.	Index Number	Part Number	Description	Qty.	Index Number	Part Number	Description	Qty.
1	259-014-0	Valve Body	1	43	259-466-0	Second Internal Gear	1	85	982-036-0	Ball Bearing (699)	1
2	546-091-1	Air Inlet Bushing	1	46	259-487-0	Second Gear Cage Spacer	1	86	982-100-0	Ball Bearing (6000)	1
3	259-097-0	Air Inlet Connector	1	47	259-441-2	Angle Casing	1	87	982-902-0	Ball Bearing (6901)	1
4	259-100-0	Valve	1	48	259-081-0	Locking Nut	1	88	988-480-0	Needle Roller Bearing (BK0810)	1
5	259-102-1	Valve Bushing	1	49	259-420-2	Driving Gear	1	89	988-393-0	Needle Roller Bearing (NF-1416)	1
6	553-103-1	Valve Rod Bushing	1	51	259-426-0	Driving Gear Spindle Screw	1	90	990-910-0	O-Ring (SNS-12.5)	1
7	472-104-7	Valve Rod	1	52	259-567-2	Driving Gear Bushing	1	91	990-912-0	O-Ring (SNS-14)	2
8	444-106-8	Valve Rod Cap	1	53	895-046-1	Driven Gear (OP-P)	1	92	990-924-0	O-Ring (SNS-30)	1
9	196-107-7	Valve Lever	1	54	259-488-2	Angle Casing Cover	1	93	990-925-0	O-Ring (SNS-32)	2
10	259-114-0	Valve Shaft	1	55	891-300-1	Socket Pin Assembly	1	25	259-287-0	Rotor	1
11	259-254-0	Shut-Off Valve	1	56	968-130-0	Grease Cup (3/16)	1	29	472-470-3	Planet Gear	3
12	259-780-0	Exhaust Stack	1	57	970-092-0	Pin (H) (2 x 5.5)	1	30	472-480-3	Gear Cage	1
13	259-782-0	Exhaust Deflector	1	58	970-102-0	Pin (H) (2 x 16)	1	44	499-470-7	First Planet Gear	3
14	259-835-0	Filter	1	59	971-110-0	Pin (2 x 10)	1	45	259-485-0	Second Gear Cage	1
15	259-835-1	Filter	1	60	972-089-0	Roller Pin (3 x 8)	6	74	976-597-0	Spring (25.2 x 34.5) (3.0)	1
16	996-418-0	Packing (15x 9 x 1)	1	61	972-092-0	Roller Pin (3 x 12)	1	95	259-287-1	Rotor	1
17	259-025-0	Casing	1	62	972-111-0	Roller Pin (4 x 11)	3	96	472-471-7	Second Planet Gear	3
18	259-210-0	Reverse Valve	1	63	972-320-0	Roller Pin (8 x 20)	1	97	472-485-7	Second Gear Cage	1
19	259-212-0	Reverse Lever	1	64	969-470-0	Pin (E) (2 x 8)	1	44	499-470-7	First Planet Gear	3
20	259-222-1	Reverse Valve Setter	1	65	973-108-0	Roll Pin (3 x 8)	1	45	259-485-0	Second Gear Cage	1
21	259-224-0	Reverse Valve Set Screw	1	66	973-116-0	Roll Pin (3 x 16)	1	101	976-596-0	Spring (25.2 x 32.5) (3.0)	1
22	259-291-0	Rear Spacer	1	67	973-124-0	Roll Pin (3 x 24)	1	25	259-287-0	Rotor	1
23	259-285-0	Rear Plate	1	68	975-106-0	Spacer (18.5 x 11 x 1)	1	29	472-470-3	Planet Gear	3
24	259-286-0	Cylinder	1	69	975-806-0	Adjusting Spacer (24 x 20 x T)	1	30	472-480-3	Gear Cage	1
26	259-288-0	Blade	5	70	975-807-0	Adjusting Spacer (28 x 25 x T)	1	98	499-445-0	First Middle Gear	1
27	496-289-1	Front Plate	1	71	962-706-0	Belleville Spring (BD24)	2	99	499-470-0	First Planet Gear	3
28	463-029-8	Gear Casing	1	72	976-022-0	Spring (3 x 5.5)	1	100	259-485-1	Second Gear Cage	1
31	472-807-3	Spacer	1	73	976-058-0	Spring (4.5 x 11)	1	102	979-358-0	Inner Snap Ring (ISTW-17)	1
32	895-063-1	Clutch Casing	1	75	977-128-0	Cone Spring (6.5 x 11 x 14)	1	74	976-597-0	Spring (25.2 x 34.5) (3.0)	1
33	259-346-0	Cam	1	76	977-180-0	Cone Spring (7.5 x 12 x 22)	1	95	259-287-1	Rotor	1
34	895-065-1	Cam Guide	1	77	978-307-0	Snap Ring (30 x 1.6)	1	96	472-471-7	Second Planet Gear	3
35	259-375-0	Cam Ring	1	78	979-019-0	Inner Snap Ring (26)	1	97	472-485-7	Second Gear Cage	1
36	895-066-1	Spring Retainer	1	79	979-327-0	Inner Snap Ring (IRTW-28)	1	98	499-445-0	First Middle Gear	1
37	259-318-0	Pilot Pin	1	79-1	979-108-0	Outer Snap Ring (11)	1	99	499-470-0	First Planet Gear	3
38	471-764-7	Notch Pin	1	80	981-001-0	Ball (3/32)	2	100	259-485-1	Second Gear Cage	1
39	471-670-7	Band	1	81	981-002-0	Ball (1/8)	1	101	976-596-0	Spring (25.2 x 32.5) (3.0)	1
40	895-064-1	Spring Holder	1	82	981-004-0	Ball (3/16)	10	102	979-358-0	Inner Snap Ring (ISTW-17)	1
41	472-257-8	Regulating Screw	1	83	982-015-0	Ball Bearing (608)	1				
42	259-670-0	Band	1	84	982-033-0	Ball Bearing (696)	1				

### FOOTNOTES

- = parts for UAN-610R-30CS
- = parts for UAN-610R-50CS
- + = parts for UAN-610R-40CS
- ◆ = parts for UAN-610R-60CS

AIMCO also offers a complete line of standard & special adapters, bits, sockets and extensions.



# AIMCO

When ordering spare parts, please specify tool type, part number and description.

10000 SE PINE, PORTLAND, OR 97216  
503-254-6600 FAX 503-255-2615