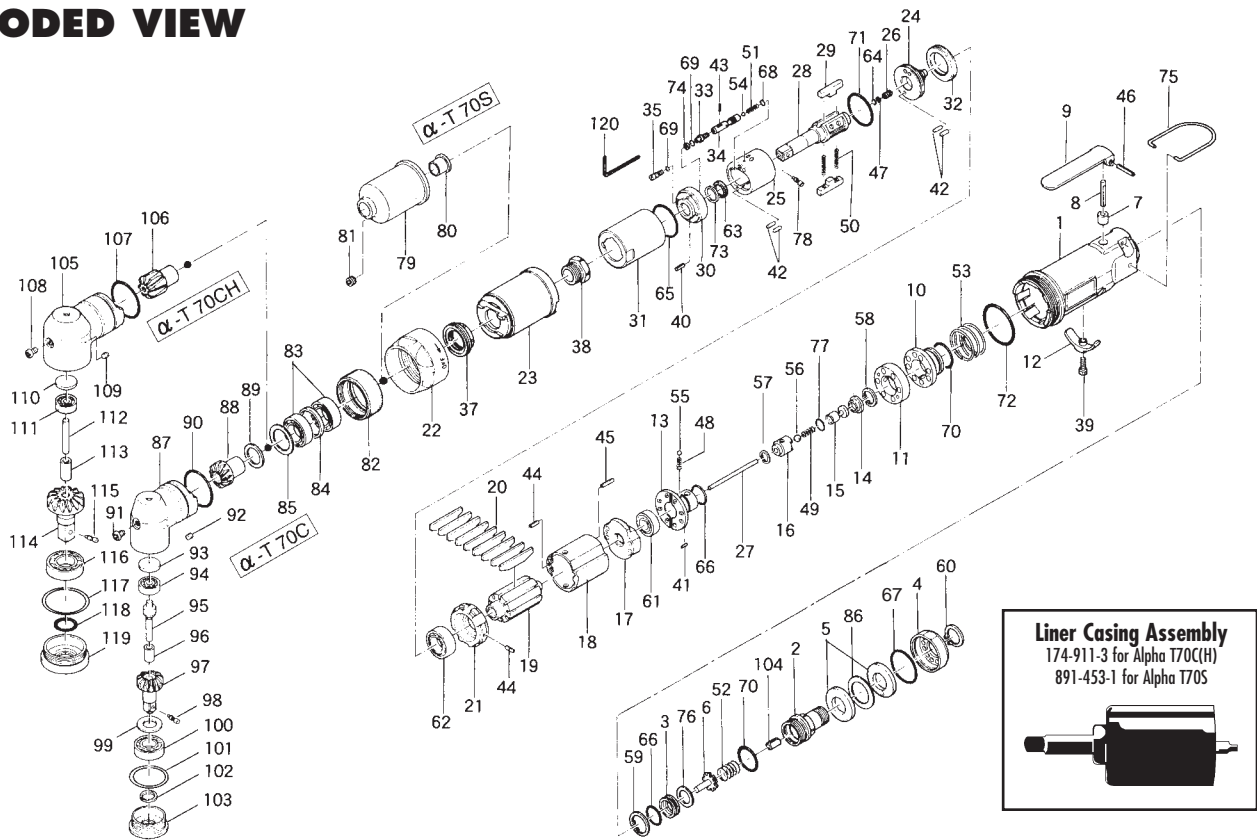


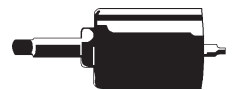
# ALPHA T70S, T70C, T70CH OIL-PULSE TOOLS

## EXPLODED VIEW



### Liner Casing Assembly

174-911-3 for Alpha T70C(H)  
891-453-1 for Alpha T70S



## PARTS LIST — FOR REFERENCE ONLY

Index Number	Part Number	Description	Qty.	Index Number	Part Number	Description	Qty.	Index Number	Part Number	Description	Qty.
2	162-091-0	Air Inlet Bushing	1	49	976-141-0	Spring (5 x 13 x 0.5)	1	84	179-423-6	Driving Gear Metal Spacer	1
3	162-092-0	Air Inlet Bushing Spacer	1	50	976-793-0	Spring (3.7 x 29 x 0.5) WPC	1	85	975-803-0	Adjusting Spacer (30 x 26 x T)	1
4	162-780-0	Exhaust Cover	1	51	976-310-0	Spring (2.6 x 8.2) (0.4)	1	86	996-459-0	Packing (32 x 22 x 0.5)	1
5	259-835-6	Filter	2	52	976-321-0	Spring (13 x 14 x 1.0)	1	87	160-441-7	Angle Casing	1
6	259-100-6	Valve	1	53	976-679-0	Spring (31 x 14 x 1.6)	1	88	179-420-6	Driving Gear	1
7	553-103-1	Valve Rod Bushing	1	54	981-150-0	Ball (3mm)	1	89	179-425-6	Driving Gear Spacer	1
8	156-114-5	Valve Spindle	1	55	981-002-0	Ball (1/8)	1	90	990-922-0	O-Ring (SNS-28)	1
9	196-107-7	Throttle Lever	1	56	981-004-0	Ball (3/16)	1	91	945-949-0	Hexagon Round Head Bolt (M5 x 6)	1
10	162-226-0	Auxiliary Reverse Valve	1	57	979-315-0	Inner Snap Ring (IRTW-15)	1	92	954-206-0	Allen Head Cone Point Screw (M5 x 6)	1
11	171-210-0	Reverse Valve	1	58	979-316-0	Inner Snap Ring (IRTW-16)	1	93	562-391-7	Wheel Spindle Rear Cover	1
12	162-212-0	Reverse Lever	1	59	979-319-0	Inner Snap Ring (IRTW-19)	1	94	982-021-0	Ball Bearing (626)	1
13	156-222-5	Reverse Valve Retainer	1	60	979-358-0	Inner Snap Ring (ISTW-17)	1	95	188-431-7	Driven Gear Spindle	1
14	156-927-5	Shut-off Valve Cover	1	61	982-402-0	Ball Bearing (EE-3)	1	96	020-432-1	Driven Gear Collar	1
15	156-254-5	Shut-off Valve	1	62	982-903-0	Ball Bearing (6902)	1	97	020-430-1	Driven Gear(P) Assembly	1
16	156-968-5	Pilot Valve Retainer	1	63	990-152-0	O-Ring (P12)(NTN)	1	98	891-301-1	Socket Pin Assembly	1
17	162-285-0	Rear Plate	1	64	990-320-0	O-Ring (ARP568-003)	1	99	020-433-1	Driven Gear Spacer	1
18	162-286-0	Cylinder	1	65	990-334-0	O-Ring (JW1530-24)	1	100	982-101-1	Ball Bearing (6001)	1
19	151-287-4	Rotor	1	66	990-590-0	O-Ring (17 x 1)	2	101	975-836-0	Adjusting Spacer (36 x 32.5 x 1)	1
20	164-288-0	Blade	9	67	990-603-0	O-Ring (28.5 x 1.3)	1	102	993-003-0	Felt Ring (12 x 16 x 2)	1
21	162-289-0	Front Plate	1	68	990-621-0	O-Ring (3.8 x 1.8 x 1.0)	1	103	179-488-6	Angle Casing Cover	1
22	180-081-4	Front Case Nut	1	69	990-900-0	O-Ring (SNS-2)	2	104	973-338-0	Roll Pin (6 x 8)	1
24	174-901-2	Rear Liner Plate	1	70	990-919-0	O-Ring (SNS-22)	2	105	171-441-0	Angle Casing	1
25	174-902-2	Liner	1	71	990-923-0	O-Ring (SNS-26)	1	106	171-420-0	Driving Gear	1
26	175-546-9	Piston	1	72	990-928-0	O-Ring (SNS-38)	1	107	990-922-0	O-Ring (SNS-28)	1
27	156-130-5	Operating Spindle	1	73	944-013-0	Supporting Ring Endles (P12)	1	108	945-949-0	Hexagon Round Head Bolt (M5 x 6)	1
29	194-440-0	Driving Blade	2	74	944-203-0	Supporting Ring (3.1 x 5 x 1)	1	109	954-206-0	Allen Head Cone Point Screw (M5 x 6)	1
30	174-904-2	Front Liner Plate	1	75	191-790-1	Suspension Ring	1	110	562-391-7	Wheel Spindle Rear Cover	1
31	194-905-0	Liner Casing	1	76	996-432-0	Packing (19 x 10.5 x 1)	1	111	982-021-0	Ball Bearing (626)	1
32	194-906-0	Liner Casing Cover	1	77	996-418-0	Packing (15 x 9 x 1)	1	112	171-431-0	Driven Gear Spindle	1
33	174-907-2	Relief Valve Spindle	1	1	162-025-0	Casing	1	113	171-432-0	Driven Gear Collar	1
34	174-970-2	Relief Valve	1	28	891-309-1	Anvil (OP-P) Assembly	1	114	891-428-1	Driven Gear(P) Assembly	1
35	194-742-0	Oil Plug	1	78	891-300-1	Socket Pin Assembly	1	115	891-301-1	Socket Pin Assembly	1
39	945-000-0	Allen Head Bolt (M3 x 8)	1	79	162-439-0	Front Casing	1	116	982-103-0	Ball Bearing (6003)	1
40	969-449-0	Pin (G) (3 x 6)	1	80	190-328-6	Anvil Bushing	1	117	975-875-0	Adjusting Spacer (44 x 40.2 x T)	1
41	970-091-0	Pin (H) (2 x 4.5)	1	81	162-064-0	Plug	1	118	990-156-0	O-Ring (P16)	1
42	970-204-0	Pin (H) (3 x 6)	4	1	160-025-7	Casing	1	119	171-488-0	Angle Casing Cover	1
43	970-013-0	Pin (H) (1.5 x 4)	1	23	171-439-0	Front Casing	1				
44	973-068-0	Roll Pin (2.5 x 8)	2	28	194-319-0	Anvil (OP-O)	1				
45	973-076-0	Roll Pin (2.5 x 16)	1	37	160-797-7	Bearing Setter	1				
46	973-124-0	Roll Pin (3 x 24)	1	38	160-799-7	Bearing Setter Nut	1				
47	975-780-0	Adjusting Spacer (21 x 13 x T)	1	82	171-382-0	Hammer Casing Nut	1				
48	976-006-0	Spring (3 x 5 x 0.4)	1	83	982-904-0	Ball Bearing (6903)	2				

### ACCESSORIES

120	939-108-0	Allen Wrench (1.5mm)	1
-----	-----------	----------------------	---

### FOOTNOTES

- ✕ = Parts for Alpha T70S
- = Parts for Alpha T70C & T70CH
- = Parts for Alpha T70C
- ▼ = Parts for Alpha T70CH

AIMCO also offers a complete line of standard & special adapters, bits, sockets and extensions.



When ordering spare parts, please specify tool type, part number and description.  
**10000 SE PINE, PORTLAND, OR 97216**  
**503-254-6600 FAX 503-255-2615**