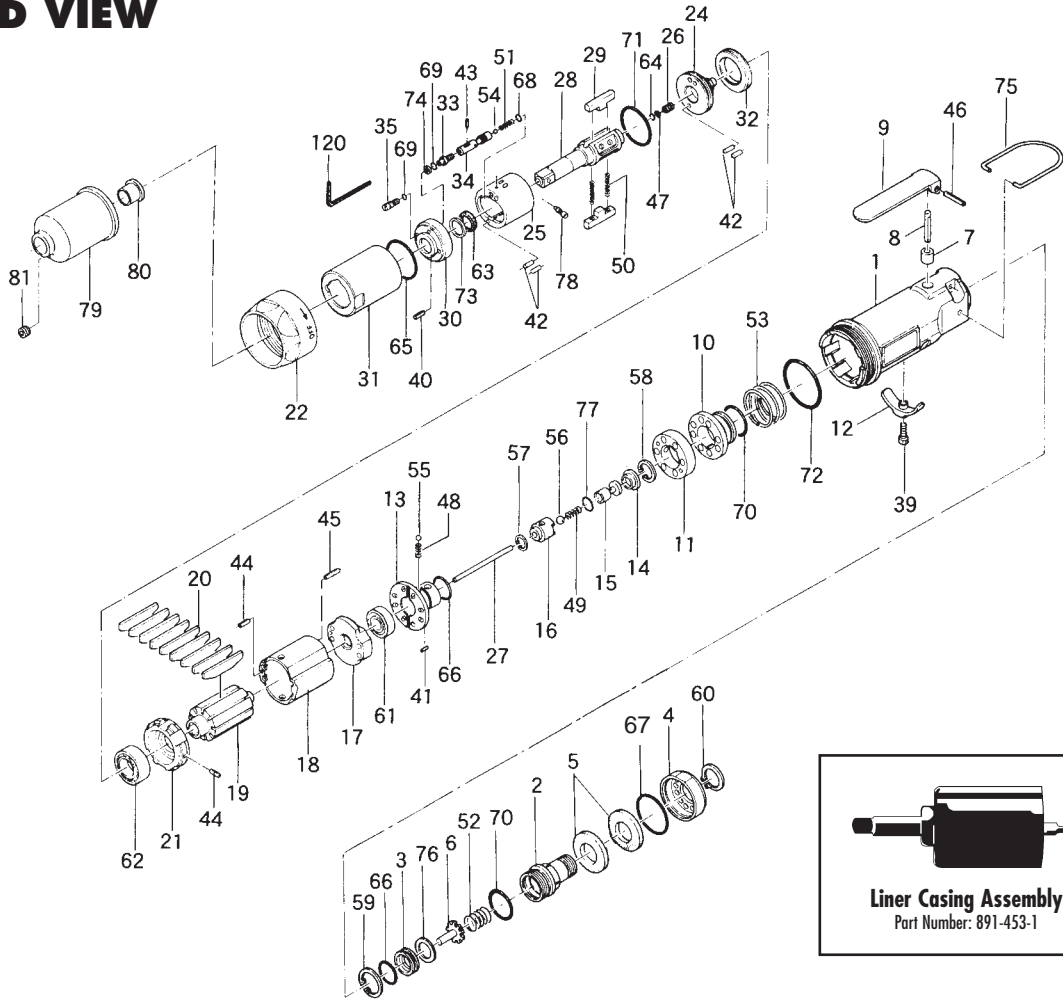


EXPLODED VIEW



PARTS LIST — FOR REFERENCE ONLY

Index Number	Part Number	Description	Qty.	Index Number	Part Number	Description	Qty.	Index Number	Part Number	Description	Qty.
1	162-025-0	Casing	1	30	174-904-2	Front Liner Plate	1	61	982-402-0	Ball Bearing (EE-3)	1
2	162-091-0	Air Inlet Bushing	1	31	194-905-0	Liner Casing	1	62	982-903-0	Ball Bearing (6902)	1
3	162-092-0	Air Inlet Bushing Spacer	1	32	194-906-0	Liner Casing Cover	1	63	995-512-0	Teflon Seal (P12)	1
4	162-780-0	Exhaust Cover	1	33	174-907-2	Relief Valve Spindle	1	64	990-320-0	O-Ring (ARP568-003)	1
5	259-835-6	Filter	2	34	174-970-2	Relief Valve	1	65	990-334-0	O-Ring (JW1530-24)	1
6	259-100-6	Valve	1	35	194-742-0	Oil Plug	1	66	990-590-0	O-Ring (17 x 1)	2
7	553-103-1	Valve Rod Bushing	1	39	945-000-0	Allen Head Bolt (M3 X8)	1	67	990-603-0	O-Ring (28.5 x 1.3)	1
8	156-114-5	Valve Spindle	1	40	969-449-0	Pin (G) (3X6)	1	68	990-621-0	O-Ring (3.8 x 1.8 x 1.0)	1
9	196-1 07-7	Throttle Lever	1	41	970-091-0	Pin (H) (2 x 4.5)	1	69	990-900-0	O-Ring (SNS-2)	2
10	162-226-0	Auxiliary Reverse Valve	1	42	970-204-0	Pin (H) (3 x 6)	4	70	990-919-0	O-Ring (SNS-22)	2
11	171-210-0	Reverse Valve	1	43	970-013-0	Pin (H) (1.5 x 4)	1	71	990-923-0	O-Ring (SNS-26)	1
12	162-212-0	Reverse Lever	1	44	973-068-0	Roll Pin (2.5 x 8)	2	72	990-928-0	O-Ring (SNS-38)	1
13	156-222-5	Reverse Valve Retainer	1	45	973-076-0	Roll Pin (2.5 x 16)	1	73	944-013-0	Supporting Ring Endles (P12)	1
14	156-927-5	Shut-off Valve Cover	1	46	973-124-0	Roll Pin (3 x 24)	1	74	944-203-0	Supporting Ring (3.1 x 5 x 1)	1
15	156-254-5	Shut-off Valve	1	47	975-780-0	Adjusting Spacer (21 x 13 x T)	1	75	191-790-1	Suspension Ring	1
16	156-968-5	Pilot Valve Retainer	1	48	976-006-0	Spring (3 x 5 x 0.4)	1	76	996-432-0	Packing (19 x 10.5 x 1)	1
17	162-285-0	Rear Plate	1	49	976-141-0	Spring (5 x 13 x 0.5)	1	77	996-418-0	Packing (15 x 9 x 1)	1
18	162-286-0	Cylinder	1	50	976-793-0	Spring (3.7 x 29 x 0.5) WPC	1	78	891-300-1	Socket Pin Assembly	1
19	151-287-4	Rotor	1	51	976-279-0	Spring (2.6 x 8) (0.35)	1	79	162-439-0	Front Casing	1
20	164-288-0	Blade	9	52	976-321-0	Spring (13 x 14 x 1.0)	1	80	190-328-6	Anvil Bushing	1
21	162-289-0	Front Plate	1	53	976-679-0	Spring (31 x 14 x 1.6)	1	81	162-064-0	Plug	1
22	180-081-4	Front Case Nut	1	54	981-001-0	Ball (3mm)	1				
24	174-901-2	Rear Liner Plate	1	55	981-002-0	Ball (1/8)	1				
25	174-902-2	Liner	1	56	981-004-0	Ball (3/16)	1				
26	175-546-9	Piston	1	57	979-315-0	Inner Snap Ring (IRTW-15)	1				
27	156-130-5	Operating Spindle	1	58	979-316-0	Inner Snap Ring (IRTW-1 6)	1				
28	891-309-1	Anvil (OP-P) Assembly	1	59	979-319-0	Inner Snap Ring (IRTW-1 9)	1				
29	194-440-0	Driving Blade	2	60	979-358-0	Inner Snap Ring (ISTW-17)	1				



AIMCO

When ordering spare parts, please specify tool type, part number and description.
 10000 SE PINE, PORTLAND, OR 97216
 503-254-6600 FAX 503-255-2615

FOOTNOTES

ACCESSORIES		
120	939-108-0	Allen Wrench (1.5mm) 1

AIMCO also offers a complete line of standard & special adapters, bits, sockets and extensions.