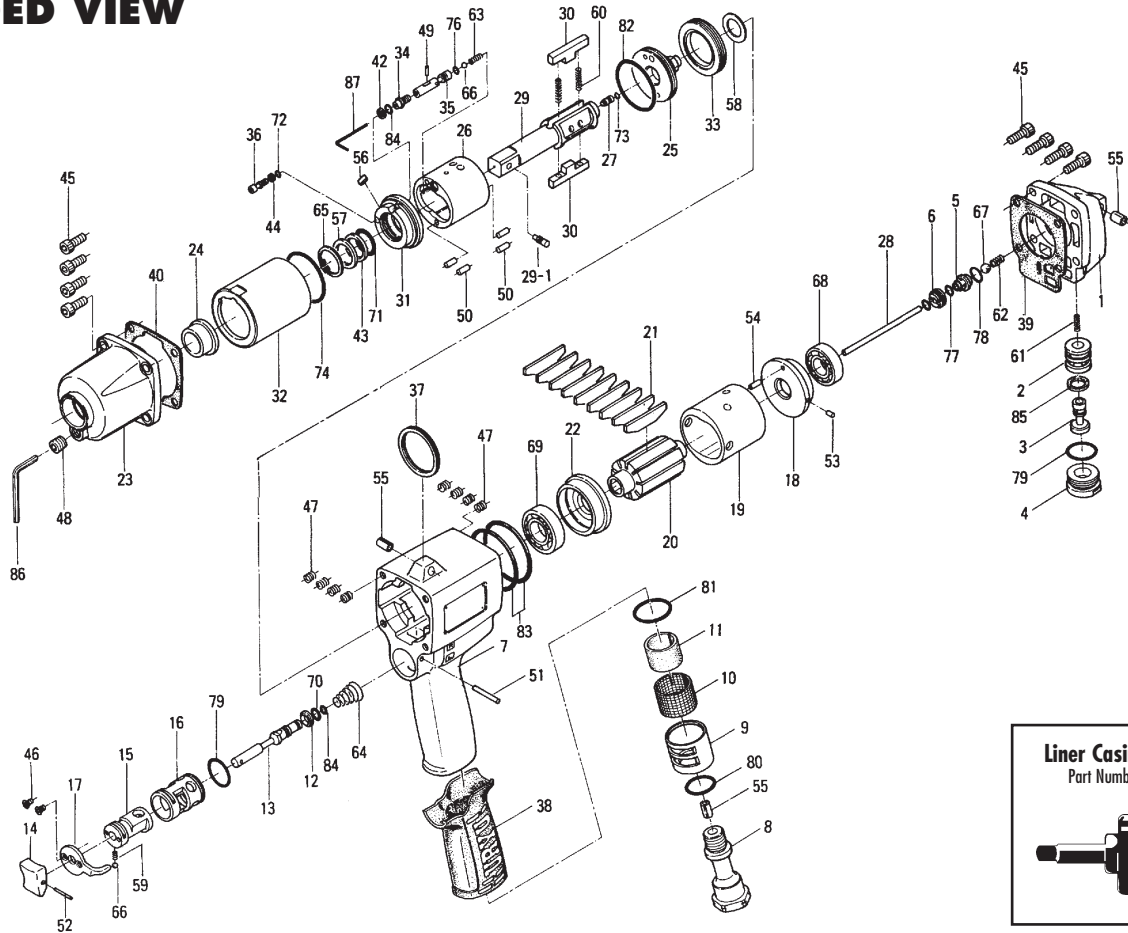
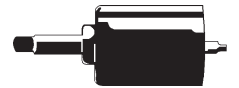


EXPLODED VIEW



Liner Casing Assembly
Part Number: 891-454-1



PARTS LIST — FOR REFERENCE ONLY

Index Number	Part Number	Description	Qty.	Index Number	Part Number	Description	Qty.	Index Number	Part Number	Description	Qty.
1	151-012-7	Head Cover	1	30	194-440-2	Driving Blade	2	61	976-072-0	Spring (4.5 x 10.5 x 0.5)	1
2	174-253-2	Shut-off Valve Bushing	1	31	151-904-7	Front Liner Plate	1	62	976-275-0	Spring (6.7 x 12 x 0.7)	1
3	174-254-2	Shut-off Valve	1	32	163-905-0	Liner Casing	1	63	976-313-0	Spring (3.6 x 8.3 x 0.5)	1
4	175-927-9	Shut-off Valve Cover	1	33	194-906-2	Liner Casing Setter	1	64	977-160-0	Cone Spring (7.4 x 14 x 20)	1
5	175-968-9	Pilot Valve Retainer	1	34	175-907-9	Relief Valve Spindle	1	65	979-321-0	Snap Ring (RTW-21)	1
6	175-019-9	Valve Cover	1	35	151-970-6	Relief Valve	1	66	981-002-0	Ball (1/8)	2
7	151-025-7	Handle	1	36	163-742-0	Oil Plug	1	67	981-006-0	Ball (1/4)	1
8	173-091-0	Air Inlet Bushing	1	37	004-790-2	Suspension Ring	1	68	982-403-0	Ball Bearing (EE4)	1
9	173-780-0	Exhaust Stack	1	38	173-842-0	Handle Cover	1	69	982-950-0	Ball Bearing (16002)	1
10	173-042-0	Silencer	1	39	151-853-7	Head Cover Packing	1	70	990-002-0	O-Ring (P4)	1
11	163-835-0	Filter	1	40	194-867-2	Front Casing Packing	1	71	990-156-0	O-Ring (P16)	1
12	173-100-0	Valve	1	42	944-205-0	Supporting Ring (5.1 x 7 x 1)	1	72	990-319-0	O-Ring (ARP568-002)	1
13	173-104-0	Valve Rod	1	43	944-215-0	Supporting Ring (16 x 19.9 x 1.5)	1	73	990-320-0	O-Ring (ARP568-003)	1
14	177-107-5	Valve Lever	1	44	944-000-0	Supporting Ring (2.5 x 4 x 1)	1	74	990-337-0	O-Ring (JW1530-27)	1
15	151-210-4	Reverse Valve	1	45	945-117-0	Allen Head Bolt (M5 x 16)	8	76	990-970-0	O-Ring (SNS-2)	1
16	151-211-4	Reverse Valve Bushing	1	46	948-423-0	Allen Flush Screw (M3 x 6)	2	77	990-901-0	O-Ring (SNS-3)	1
17	173-212-0	Reverse Lever	1	47	965-011-0	Heli-Sert (M5 x 1.5D)	8	78	990-907-0	O-Ring (SNS-9)	1
18	163-285-0	Rear Plate	1	48	966-110-0	Allen Head Plug (NPT 1/16)	1	79	990-914-0	O-Ring (SNS-16)	2
19	163-286-0	Cylinder	1	49	970-093-0	Pin (H) (2 x 6)	1	80	990-916-0	O-Ring (SNS-18)	1
20	151-287-7	Rotor	1	50	970-206-0	Pin (H) (3 x 8)	4	81	990-921-0	O-Ring (SNS-22.4)	1
21	164-288-0	Blade	9	51	971-125-0	Pin (H) (2 x 25)	1	82	990-924-0	O-Ring (SNS-30)	1
22	163-289-0	Front Plate	1	52	973-014-0	Roll Pin (2 x 14)	1	83	990-934-0	O-Ring (SNS-44)	2
23	163-439-0	Front Casing	1	53	973-066-0	Roll Pin (2.5 x 6)	1	84	990-972-0	O-Ring (SNS-4)	2
24	188-328-2	Anvil Bushing	1	54	973-068-0	Roll Pin (2.5 x 8)	1	85	996-418-0	Packing (15 x 9 x 1)	1
25	167-901-4	Rear Line Plate	1	55	973-340-0	Roll Pin (6 x 10)	3				
26	167-902-4	Liner	1	56	974-005-0	Key (3 x 6)	1				
27	175-546-9	Piston	1	57	975-154-0	Spacer (20.8 x 16.2 x 1.5)	1				
28	151-130-7	Piston Rod	1	58	975-780-0	Adjusting Spacer (21 x 13 x T)	1				
29	891-317-1	Anvil (OP-P)	1	59	976-006-0	Spring (3 x 5 x 0.4)	1				
29-1	891-304-1	Socket Pin Assembly	1	60	976-793-0	Spring (3.7 x 29 x 0.5) WPC	2				

ACCESSORIES

86	939-104-0	Allen Wrench (5mm)	1
87	939-091-0	Allen Wrench (1.5 x 80 x 20)	1

FOOTNOTES

AIMCO also offers a complete line of standard & special adapters, bits, sockets and extensions.



AIMCO

When ordering spare parts, please specify tool type, part number and description.

10000 SE PINE, PORTLAND, OR 97216
503-254-6600 FAX 503-255-2615